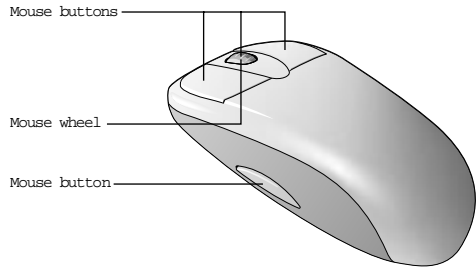


Using Your Cordless Wheel Mouse

Your cordless mouse has a wheel that functions both as a wheel and as a button.

- ☞ To scroll, simply move the wheel forward or backward.
- ☞ To use the wheel like a standard mouse button, click (press down) the wheel.

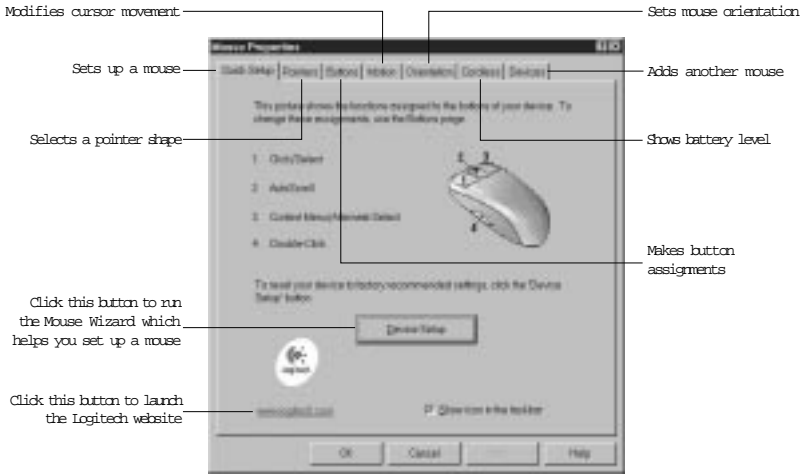


Scrolling and Zooming with the Cordless Wheel Mouse

Task	What is It?	How to Do It?
Wheel Scroll	Use Wheel Scroll for precise up and down movement.	To scroll up, move the wheel forward; to scroll down, move the wheel back.
Horizontal Scroll	Use Horizontal Scroll in Windows [®] 95, Windows [®] 98, and Windows NT [®] 4.0 to scroll left to right, or right to left, whenever horizontal scroll bars are present in the active window.	When both vertical and horizontally scroll bars are present in a window, press the Ctrl and Shift keys on your keyboard, then move the mouse wheel forward to scroll left; move the mouse wheel backward to scroll right. If no vertical scroll bars are present, simply move the mouse wheel to scroll horizontally.
Zoom	Use Zoom to either magnify or demagnify the view of a document in an application that supports it.	Place the cursor in an application that is Microsoft Office 97 compliant. Press and hold the Ctrl key on the keyboard, then to zoom in, move the wheel forward; to zoom out, move the wheel backwards.

Using the MouseWare[®] Software in Windows[®] 95/Windows[®] 98/Windows NT[®] 4.0

The MouseWare[®] software includes features for making button assignments, controlling cursor movement, and setting up the cordless wheel mouse. To access the MouseWare software, double-click the mouse icon on the Windows 95/Windows 98/Windows NT 4.0 Taskbar, or start MouseWare from the Control Panel. The Mouse Properties tabs display, as shown on the next page. Choose from the available options to configure the cordless wheel mouse.



Choosing Options for the Cordless Wheel Mouse

Need help choosing options? Let the Mouse Wizard show you how. To begin, go to the Mouse Properties. To do this, double-click the mouse icon in the Windows Taskbar. Now choose the Quick Setup tab. Click Device Setup, then follow the on-screen instructions.



To Find Out What is Assigned to Your Mouse Buttons...

By default, the mouse buttons are assigned various useful functions, such as Click/Select, AutoScroll, Context Menu/Alternate Select, Double-Click, etc. Using the Buttons tab of the Mouse Properties, you can change the button settings of your mouse and configure the mouse wheel. (Refer to the figure to the right.)

Note The setting Context Menu/Alternate Select provides easy-to-use short-cuts to speed up common tasks, such as cut and paste.

To change button assignments, click the down arrow to select a function for a button. (Note that at least one button must be assigned to Click/Select.)

Click the down arrow under Scrolling Size: to choose the amount of scrolling. This sets the amount of scrolling in relation to how much you move the scroll wheel.

Click the Options button to specify settings for AutoScroll, CyberJump, HyperJump and double-click timing.

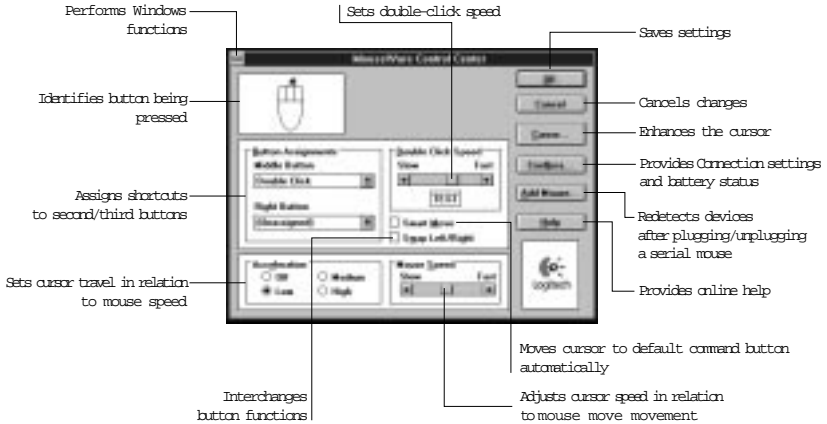
For more information, click the Help button.



Using the Software in Windows[®] 3.1x

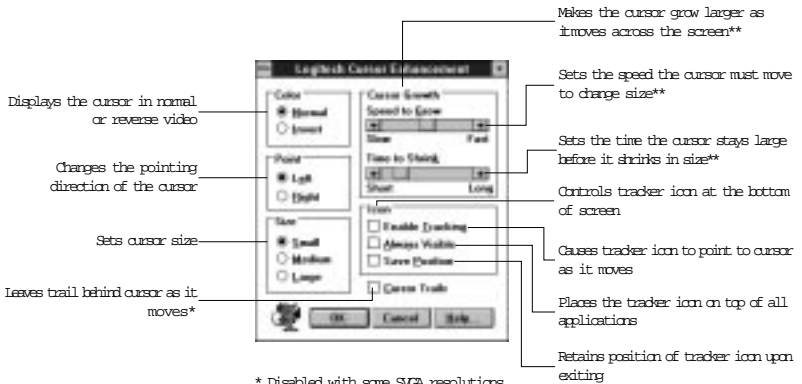
Double-click the MouseWare[®] icon located in the Logitech[®] MouseWare group window (or in the Windows Control Panel). Choose from the available options to configure the wheel mouse. Note that Scroll and Zoom, as well as CyberJump and HyperJump functions, are not supported in Windows 3.1x.

The MouseWare Control Center in Windows[®] 3.1x



Cursor Enhancement in Windows[®] 3.1x

Use the Cursor Enhancement dialog box to customize the cursor. To display the dialog box, click the Cursor button in the Mouse Control Center.



* Disabled with some SVGA resolutions.

**Disabled if Size is set to Large.

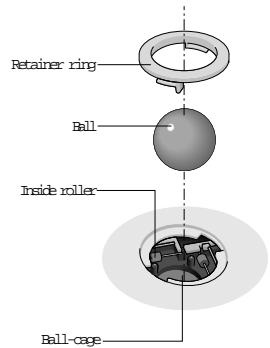
Button Assignments in Windows[®] 3.1x

MouseWare allows you to assign functions to three mouse buttons and replaces frequently used tasks, such as Double-Click, DragLock, etc., to a single button click. To override a button assignment temporarily so you can use an application-specific feature, press the Control key while clicking the button to be overridden.

Cordless Wheel Mouse Maintenance

If the cursor skips or moves abnormally, clean the ball of your cordless wheel mouse.

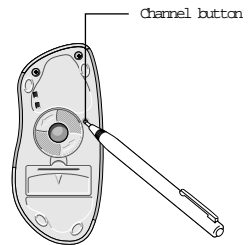
1. Remove the retainer ring. On the bottom of the cordless wheel mouse, twist the retainer ring counter clockwise to remove it.
2. Remove the ball and wipe it with a clean, lint-free cloth, then blow carefully into the ball-cage to dislodge dust and lint. Look for a build-up of dirt on the rubber roller(s) inside the ball-cage.
3. If dirty, clean the roller(s) using a cotton swab moistened lightly with isopropyl (rubbing) alcohol. After cleaning, make sure the roller(s) are still centered in their channels. Make sure that fluff from the swab is not left on the roller(s).
4. Replace the ball and retainer ring.



Troubleshooting

The Cordless Wheel Mouse Does Not Work after Installation

- ¥ Make sure you have connected the receiver correctly. The receiver cable goes into the computer's PS/2 mouse port or serial port. For optimal performance, place the receiver at least 8 inches or 20 centimeters away from other electrical devices, such as the computer, the computer monitor, or external storage drives.
- ¥ Make sure you have installed the batteries correctly.
- ¥ Establish communication between the receiver and the cordless wheel mouse. Press the Connect button on the receiver, then press the Channel button under the cordless wheel mouse.
- ¥ If you are working on a metallic surface, try using a mouse pad and turning the receiver on its side for better reception.



The Cordless Wheel Mouse Is Not Detected

- ¥ Make sure the receiver cable is plugged into the PS/2 mouse port or serial port. Do not plug or unplug the receiver cable while the computer is running.
- ¥ Make sure the PS/2 mouse port has the proper configuration. Refer to your computer documentation for the correct port configuration.
- ¥ You may have other system devices that conflict with the cordless wheel mouse. Check the IRQ/address settings of these devices for conflicts, and change the settings as required. Refer to your computer documentation to make these changes.
- ¥ To determine whether the problem is cordless wheel mouse or system related, try the cordless wheel mouse on a second system or a different mouse on your current system.

The Wheel Mouse Does Not Work after Changing the Batteries

Check to make sure the batteries you have installed are not dead. Try the batteries in another device. You may also need to re-establish the connection between the cordless wheel mouse and its receiver. To do this, press the Connect button on the receiver, then press the Channel button on the bottom of the mouse.

The Screen Cursor Does Not Move Properly on the Screen

Clean the mouse ball and roller(s). Try changing the position of the receiver. It is possible that the receiver may be too far from the cordless wheel mouse. Or the computer monitor (or a large metal object) may be interfering with the receiver's radio reception. Also, the mouse batteries may be nearly dead. Check the mouse batteries as described above. You may also need to re-establish the connection between the cordless wheel mouse and its receiver. To do this, press the Connect button on the receiver, then press the Channel button on the bottom of the mouse.