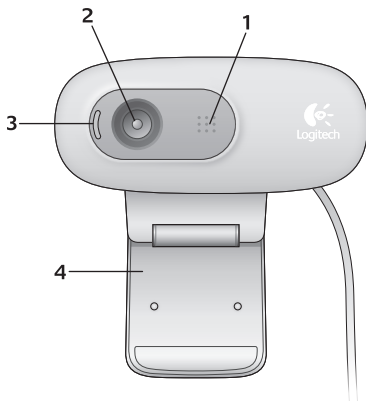


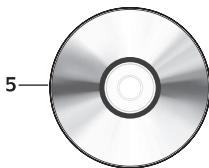
Getting started with Logitech® Webcam C260





Features

1. Microphone
2. Lens
3. Activity light
4. Flexible clip/base
5. Logitech® Webcam Software
6. Product documentation



Thank you for buying a Logitech webcam!



Use this guide to set up your Logitech webcam and to begin making video calls.

If you have questions before you start, please visit the websites listed below to learn more about Logitech webcams and video calling.

<http://www.logitech.com/support>

http://www.logitech.com/webcam_howto

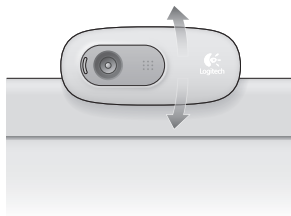
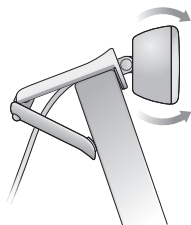
<http://www.logitech.com/whatisvid>

<http://www.logitech.com>

Setting up your webcam

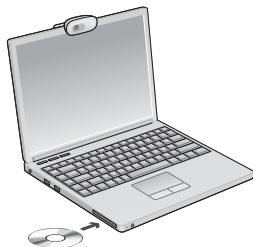
1

Place your webcam



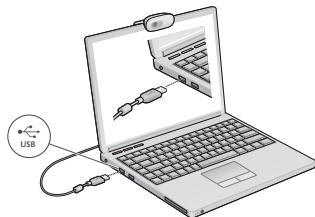
2

Install the software



3

When prompted, connect your webcam



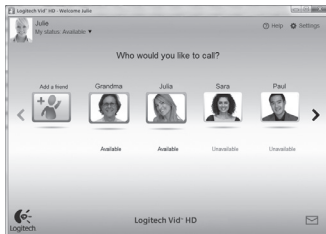
Getting started with video calling



Your webcam comes with Logitech Vid™ HD

With Logitech Vid HD, video calling live over the Internet takes only a few, easy steps:

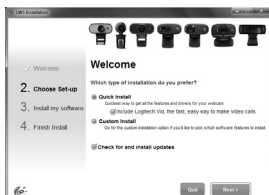
- Install Logitech Vid HD
- Create an account
- Add a friend and make a video call



Learn more: <http://www.logitech.com/whatisvid>

Setting up Logitech Vid HD

1



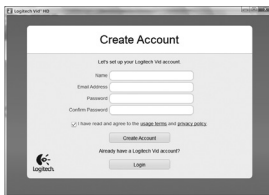
Install Logitech Vid HD

We recommend that you install both the Logitech Webcam and Logitech Vid HD software.

Tip: If you prefer another video-calling application, you will need to download and install third-party software.

Learn more: http://www.logitech.com/webcam_howto

2



Create an account

Follow the on-screen instructions to create your Logitech Vid HD account and to set up your webcam for video calling.

To make video calls with any application, both you and the person you call must have:

- A webcam
- A computer with speakers and a microphone (or a headset with a microphone; many Logitech webcams have a built-in microphone)
- A broadband Internet connection (e.g., DSL, T1, or cable)
- The same video-calling application (e.g., Logitech Vid HD)
- Video calling accounts

3



Add a friend or make a practice call

Practice Call Click on the Practice Call tile to test your settings.

Tip: The Practice Call tile is always available on your Contact List so you can test your settings.

Add a friend To add a friend, click on the Add a Friend tile and enter your friend's e-mail when prompted.

After your friend has accepted your invitation, click on your friend's picture to make a call.

Accessing account settings and starting applications



Logitech automatically detects and adjusts the best settings for your webcam. If you would like to re-take your profile picture or update any of your settings, click the Settings icon.

Double-click the icons to launch your applications.

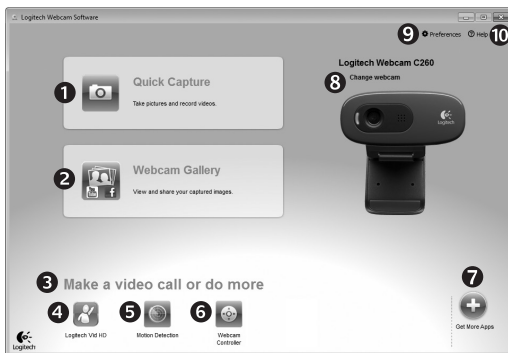
1. Logitech Webcam Software
2. Logitech Vid HD

Tip: The Logitech Vid HD icon is only present if you chose to install Logitech Vid HD. To learn about third-party video calling, please visit:

www.logitech.com/webcam_howto



Navigating the Logitech Webcam Software



1. Capture pictures and videos
2. View captured images and share via e-mail, Facebook,[®] or YouTube[®].
3. An area for easy access to your installed webcam-related applications
4. Launch Logitech Vid HD (if installed)
5. Capture videos triggered by detected motion
6. Control your video effects and webcam while on a video call
7. Download additional webcam applications
8. Change webcams (when you have more than one)
9. Open Logitech Webcam Software settings
10. Open help dashboard (manuals and how-to videos)

Capturing video and snapping pictures



Quick Capture allows you to take photos or record videos easily.

You have easy access to webcam controls and settings as well as video effects to personalize your images and recordings.

1. Preview window
2. Capture mode: photo/video
3. Capture button
4. Webcam controls
5. Video effects and fun filters (for webcams that support this feature)
6. Photo thumbnails
7. Video thumbnails
8. Click a thumbnail to enter the gallery

The gallery: viewing and sharing



Clicking on an image thumbnail in the gallery (1) opens the video or photo in the review window (2).

- Attach a video or picture file to an e-mail (3)
- Edit a photo or splice together video (4)
- Upload a picture or video to Facebook (5)
- Upload a video to YouTube (6)

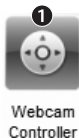
You may also drag and drop a gallery image onto one of the function tiles (items 3-6) to launch an editing application or to attach or upload.

Using motion detection



- Set up your webcam to record video when it detects movement.
- Adjust captured video duration and detection sensitivity.
- Captured video is automatically saved to your computer.
- View content in the Gallery or upload it using the One-touch Upload window.

Fine tuning your webcam during a video call



1. Launch the webcam controller when on a video call.
2. Hide your video image with a photo while your webcam stays connected.
3. Use pan and tilt to find the best angle.
4. Zoom in or out to include/exclude your surroundings.
5. Use **Follow my face** so you're always in the picture.
6. Enjoy clear conversations without annoying background noise.
7. Correct for poor lighting environments using RightLight.
8. Specify webcam operating characteristics.

Get more applications for your webcam



Download and install additional applications for your webcam, like video calling, photo and video editing, and other value-added programs.

Getting help



Click on the help icon to access a complete user manual, or watch how-to videos that show you how to get the most out of your Logitech webcam and software.

Tip: If you are not sure about a feature, click the help icon, and our manual will open to the right place.



www.logitech.com/support

United States +1 646-454-3200



www.logitech.com

© 2010 Logitech. All rights reserved. Logitech, the Logitech logo, and other Logitech marks are owned by Logitech and may be registered. All other trademarks are the property of their respective owners. Logitech assumes no responsibility for any errors that may appear in this manual. Information contained herein is subject to change without notice.

620-002802.005