

# Powerline Network Utility Software Install Instructions

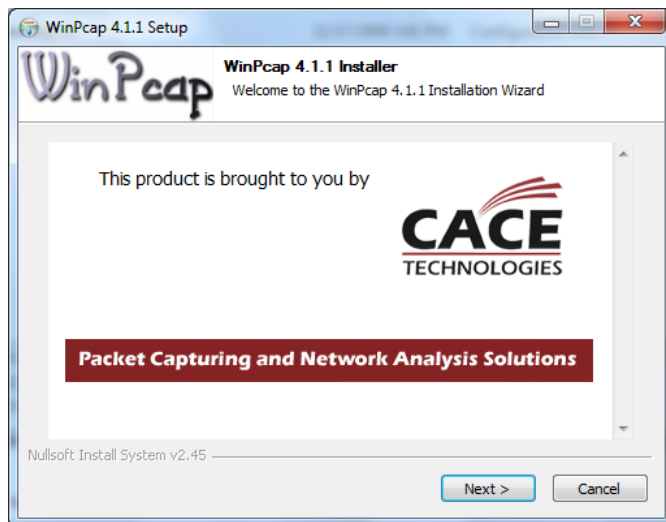
---

## INSTALLATION NOTE:

The Logitech Powerline Network Utility install also includes WinPcap, software from Cace Technologies. This software is installed prior to the Powerline Network Utility and is required. You **MUST** install WinPcap in order for the Powerline Network Utility to run.

## Installation Steps

Screen 1: Upon clicking on the install link, the WinPcap Installer by Cace Technologies starts. Click the Next > button.

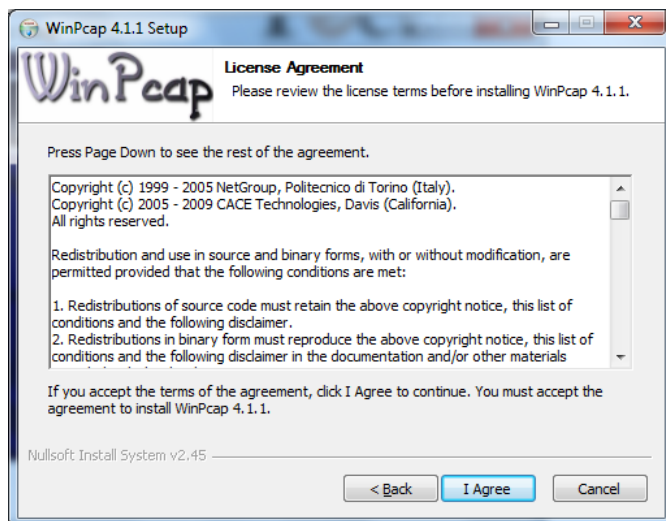


Screen 2: This screen gives you details about customer support and online help for WinPcap. Click Next > to continue.

## Powerline Network Utility Tool Installation Instructions

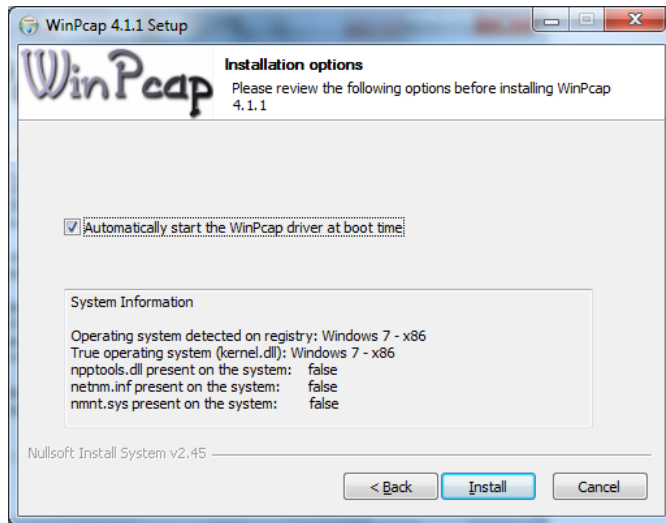


Screen 3: Review the licensing details and click “I Agree” to continue.

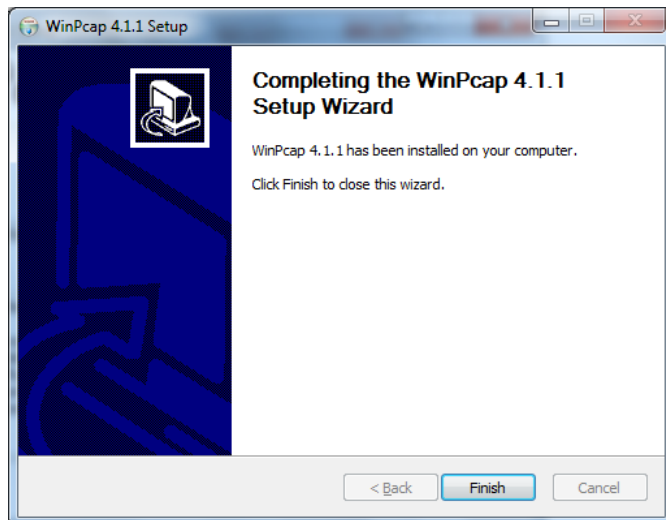


Screen 4: Please keep the default settings activated, specifically the option “Automatically start the WinPcap driver at boot time.” Unchecking this will cause the Powerline Network Utility software to not run. Click “Install.”

## Powerline Network Utility Tool Installation Instructions



Screen 5: Please remain patient as the WinPcap utility is installed . When the installation is complete, click Finish to close the WinPcap Setup Wizard and begin the installation process for the Powerline Network Utility Software.



Screen 6: This is the first screen for the Logitech Powerline Network Utility software. Please follow the instructions on the remaining screens to complete this process.

## Powerline Network Utility Tool Installation Instructions

