

Depending on your monitor resolution and computing environment, you may want to adjust pointer speed and reassign hot keys.

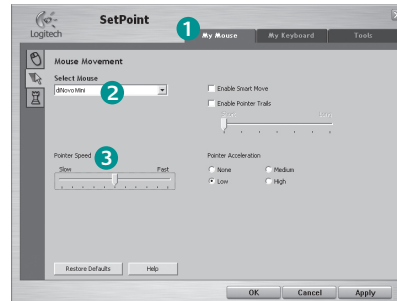
Follow these steps to configure your diNovo Mini (PC only):

Start SetPoint

Double-click the SetPoint shortcut on your desktop.

Adjust pointer speed

- 1 Click the My Mouse tab, and then click the Mouse Movement subtab on the left of the SetPoint window.
- 2 Choose diNovo Mini from the Select Mouse pull-down menu.
- 3 Drag the slider to adjust pointer speed.



Change hot key settings

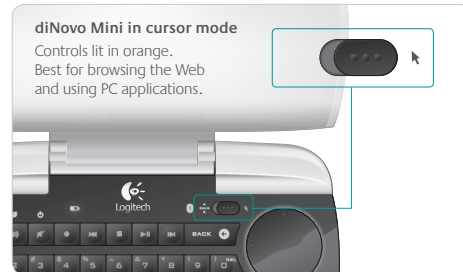
- 1 Click the My Keyboard Tab.
- 2 Select a key from the Hot Key column.
- 3 From the Select Task column select an option or choose an application for assignment.
- 4 Click OK to apply the new settings.

Using diNovo Mini

Changing modes

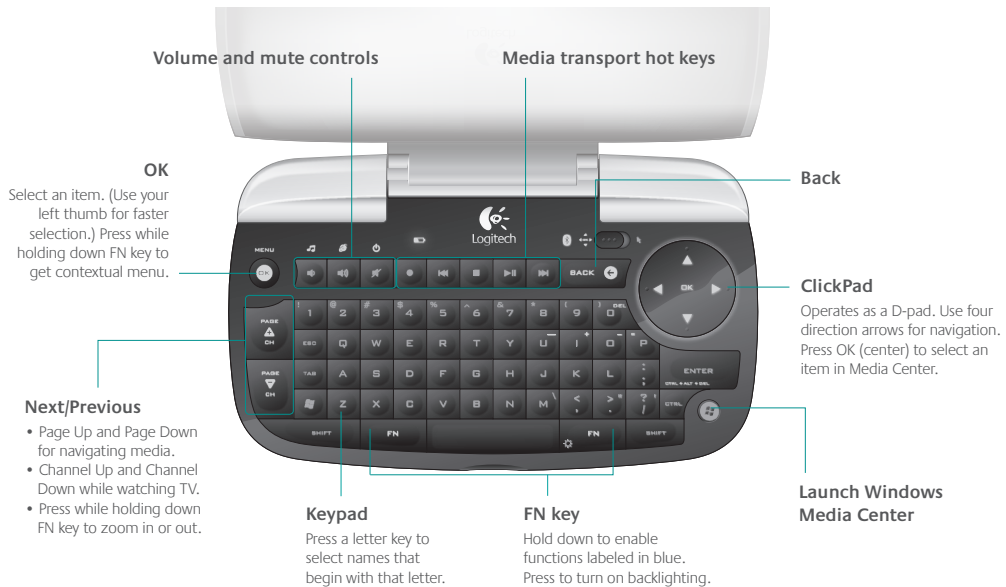
The diNovo Mini offers two operating modes, a **media remote** mode for navigating the Windows Media Center and a **cursor mode** for familiar keyboard and touch pad functions.

Switch between modes by moving the **mode slider** at the top of the keypad. Move the slider to the left to place the diNovo Mini in media remote mode. Move the slider to the right for cursor mode.



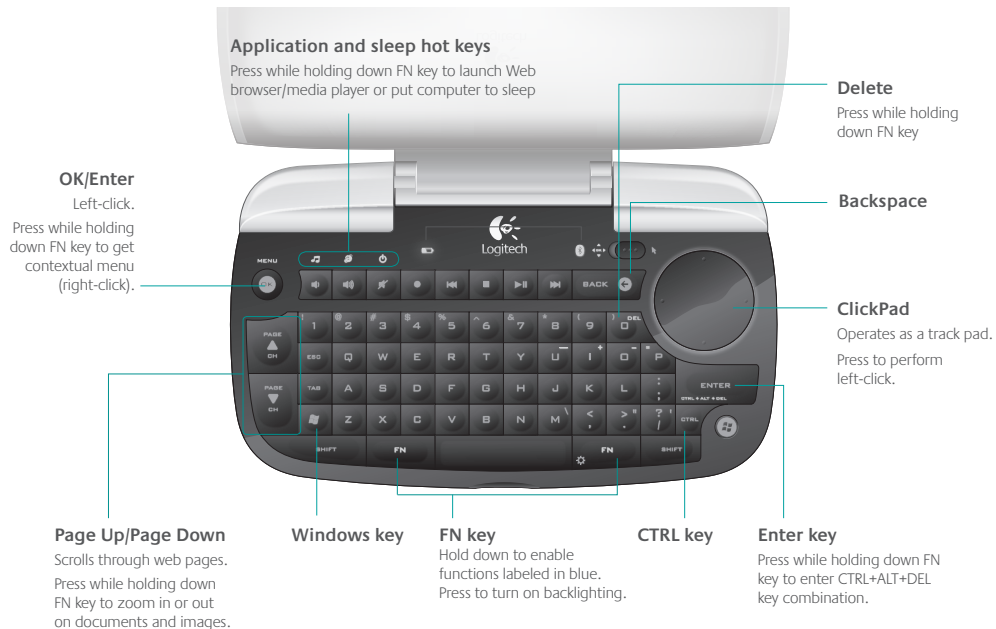
Using diNovo Mini

Controls in media remote mode



Using diNovo Mini

Controls in cursor mode



Illumination

Backlighting makes your diNovo Mini easy to use—even in a darkened room. The keyboard and ClickPad illuminate when you use them, and dim to conserve power when they are not being used.

Color-coding identifies the current mode and provides quick access to controls.

The keyboard and ClickPad automatically illuminate when you:

- Open the cover
- Touch the ClickPad
- Press any key

Backlighting fades out when you either close the cover of your diNovo Mini or stop using the keys and ClickPad for about five seconds.

Note: *The diNovo Mini uses an ambient light sensor to measure current light levels. If the available light is sufficient for viewing the keyboard and controls, the diNovo Mini suppresses backlighting to conserve power.*

Using diNovo Mini

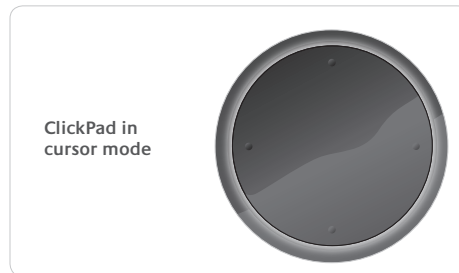
ClickPad backlighting

In media remote mode, the ClickPad direction arrows and OK in the center of the pad are backlit in green, indicating that the pad is functioning as a D-pad for navigating media.

In cursor mode, the perimeter of the ClickPad is backlit in orange to indicate that it is functioning as a touch pad for moving the cursor.

Keyboard backlighting

Keyboard keys are always backlit in orange.



Tips and troubleshooting

If a problem should occur, you can usually solve it quickly in one of the following ways:

- Plug the USB mini-receiver into a different USB port (page 9).
- The battery LED should be lit when you lift the cover (page 6). Check whether the lithium-ion battery is correctly inserted (page 8).
- Restart the diNovo Mini by removing and reinserting the lithium-ion battery (page 8).
- Recharge the keyboard (page 9).
- Press the red connect button to the right of the mini-receiver compartment (page 7).
- Check the position of the platform switch and confirm that is properly set for a PC or PLAYSTATION®3 (page 7).
- Restart your computer or console.

Service and support

General support

For service and discussion forums, visit www.logitech.com/support

Software downloads

Visit www.logitech.com/downloads

Using SetPoint™

Go to Start, Programs, Logitech, Mouse and Keyboard, Help Center. In Contents, expand the section “Using the SetPoint software.”

Registering your diNovo Mini

Visit www.logitech.com/register

Technical support



Location	Hotline	Technical Help
België / Belgique	Dutch: +32-(0)2 200 64 44; French: +32-(0)2 200 64 40	
Česká Republika	+420 239 000 335	
Danmark	+45-38 32 31 20	
Deutschland	+49-(0)69-51 709 427	
España	+34 -91-275 45 88	
France	+33-(0)1-57 32 32 71	
Ireland	+312-(0) 200 8433	
Italia	+39-02-91 48 30 31	
Magyarország	+36-177-74 853	
Nederland	+31-(0)-20-200 84 33	
Norge	+47-(0)24 159 579	
Österreich	+43-(0)1 206 091 026	
Polska	+48-22-854 11 51	
Portugal	+351-21-415 90 16	
Russija	+7(495) 641 34 60	
Schweiz / Suisse Svizzera	D +41-(0)22 761 40 12; F +41-(0)22 761 40 16; I +41-(0)22 761 40 20; E +41 (0)22 761 40 25	
South Africa	0800 981 089	
Suomi	+358-(0)9 725 191 08	
Sverige	+46-(0)8-501 632 83	
Türkiye	Check website	
United Arab Emirates	800 441-4294	
United Kingdom	+44-(0)203-024-81 59	
European, Mid. East., & African Hq, Romanel s/Morges, Switzerland	English: +41-(0)22 761 40 25 Fax: +41-(0)21 863 54 02	
Eastern Europe	English: 41-(0)22 761 40 25	



Location	Hotline	Technical Help
United States	+1 646-454-3200	
Argentina	0800 555 3284	
Brasil	0800 891 4173	
Canada	+1 416 207 2782	
Chile	1230 020 5484	
Latin America	+55 11 3444 6761	
Mexico	001 800 578 9619	

Compliance and FCC statement

Important ergonomic information. Long periods of repetitive motion using an improperly set-up workspace, incorrect body position, and poor work habits may be associated with physical discomfort and injury to nerves, tendons, and muscles. If you feel pain, numbness, weakness, swelling, burning, cramping, or stiffness in your hands, wrists, arms, shoulders, neck, or back, see a qualified health professional. For more information, please read the Comfort Guidelines located on the Logitech® web site at <http://www.logitech.com/comfort>, or on the Logitech® Software CD.

Power supply warning. The power supply for this product is for indoor use only. Use the power supply that comes with your product; do not use any other power supply. Do not use a damaged power supply or attempt to repair one that is damaged. Do not immerse the power supply in water or subject it to physical abuse. Inspect the power supply regularly for damage to its cable, plug, and body.

Battery warning. Your product uses a rechargeable lithium-ion battery. Use this battery and no other. Exercise care when handling the battery. Do not open or mutilate it. When a battery is misused, it may leak or explode causing burns and personal injury. Conducting materials can also short out a battery causing it to overheat and leak. Do not put the battery in a fire, expose it to heat above 130 F (54 C), or immerse it in water. If the battery leaks or it will not recharge, use caution and discard the battery immediately according to your local laws. Battery charge may vary depending on usage. When not using your product for long periods of time, remove the battery and store it in a cool, dry place at normal room temperature.

UL testing. Your product is UL tested (and CE certified) and should only be used with other UL listed devices.

Compliance on the Web. For additional compliance information, go to <http://www.logitech.com/compliance>.

Compliance and FCC statement

FCC statement. FCC Compliance and Advisory Statement:

This hardware device complies with Part 15 of the FCC Rules. Operation is subject to the following two conditions: 1) this device may not cause harmful interference, and 2) this device must accept any interference received, including interference that may cause undesired operation. This equipment has been tested and found to comply with the limits for a Class B digital device, pursuant to Part 15 of the FCC Rules. These limits are designed to provide reasonable protection against harmful interference in a residential installation. This equipment generates, uses, and can radiate radio frequency energy and, if not installed or used in accordance with the instructions, may cause harmful interference to radio communications. However, there is no guarantee that interference will not occur in a particular installation. If this equipment does cause harmful interference to radio or television reception, which can be determined by turning the equipment off and on, the user is encouraged to try to correct the interference by one or more of the following measures: 1) reorient or relocate the receiving antenna; 2) increase the separation between the equipment and the receiver; 3) connect the equipment to an outlet on a circuit different from that to which the receiver is connected;

4) consult the dealer or an experienced radio/TV technician for help. Any changes or modifications not expressly approved by the party responsible for compliance could void the user's authority to operate the equipment. Where shielded interface cables have been provided with the product or specified additional components or accessories elsewhere defined to be used with the installation of the product, they must be used in order to ensure compliance with FCC regulations.

Canadian Doc Statement: This digital device does not exceed the Class B limits for radio noise emissions from digital apparatus specified in the interference-causing equipment standard entitled "Digital Apparatus," ICES-003 of the Department of Communications. This device complies with RSS-210 of Industry and Science Canada. Operation is subject to the following two conditions: 1) this device may not cause interference, and 2) this device must accept any interference, including interference that may cause undesired operation of the device.