

PRONTO™

Six and One Button Paging System

QUICK SETUP & OPERATION

Each button on the one or six button PRONTO can be programmed to send a unique message to separate pagers or group of pagers. Both the six-button and one-button models can also send a specific message for an external switch or sensor.

Installation

To put the PRONTO in operation:

Note: If your Pronto is not already programmed, refer to the programming guide first.

1. Install the 2-batteries in the Pronto (note the positive and negative end)
2. Locate and install the mounting bracket where it is to be used. (use screws, straps or velcro)
3. Position the unit into the notches in the mounting bracket and press until latch engages.
4. Turn on the pager (refer to the pager booklet).
5. Press the button(s) on the PRONTO to test that the pager is receiving the messages.

Normal Operation

1. Press a button the pager will receive the message.

Optional Power Supply

The PRONTO may also be powered by an optional external power supply. Please contact Long Range Systems for more information. **WARNING:** Connection of an incorrect power supply will void the warranty.

Programming Your Pronto

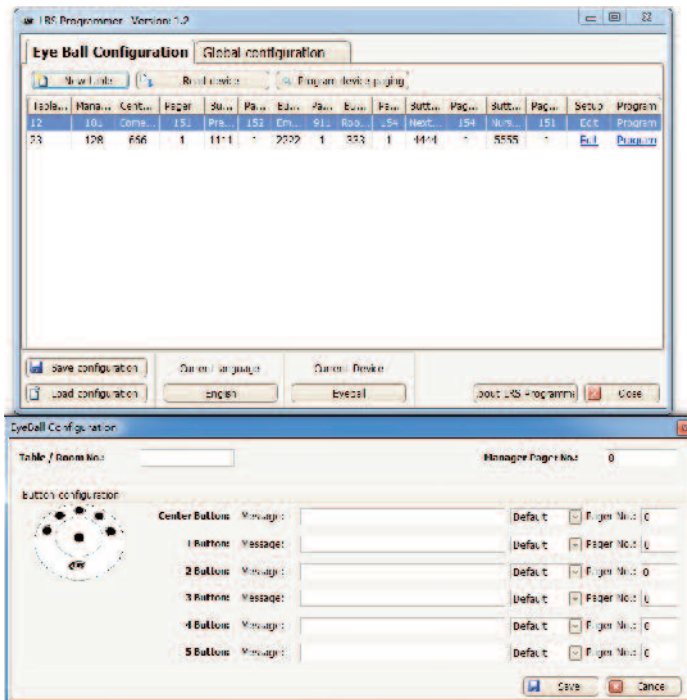
1. Locate the 4-pin connector.



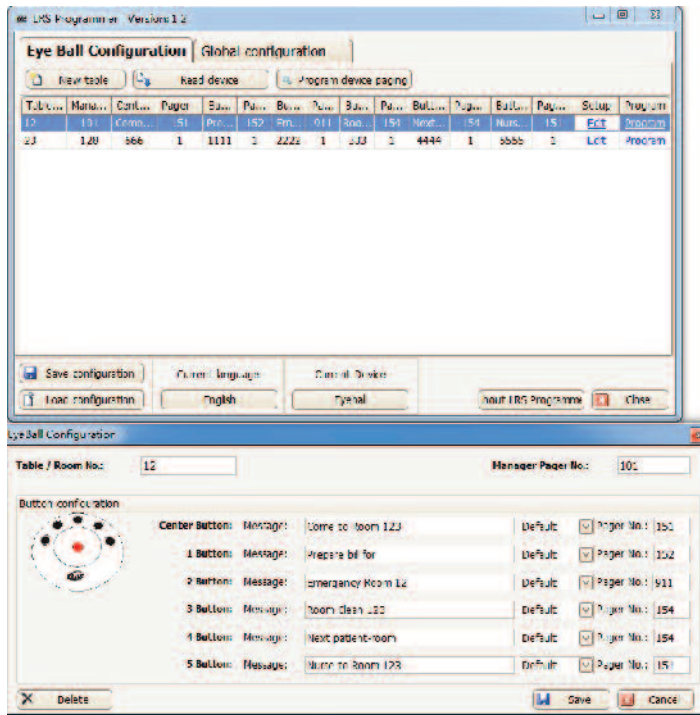
2. Connect the USB probe with special 4-pin connectors.
3. Plug into the PRONTO with 4-hole location.



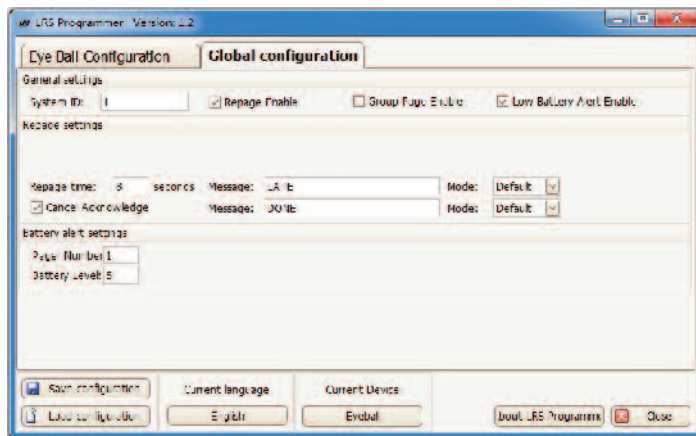
4. Connect the USB plug to the PC.
5. Execute the PC program named "LRS Programmer".
6. Click "New Table" to edit the messages associated with each button.

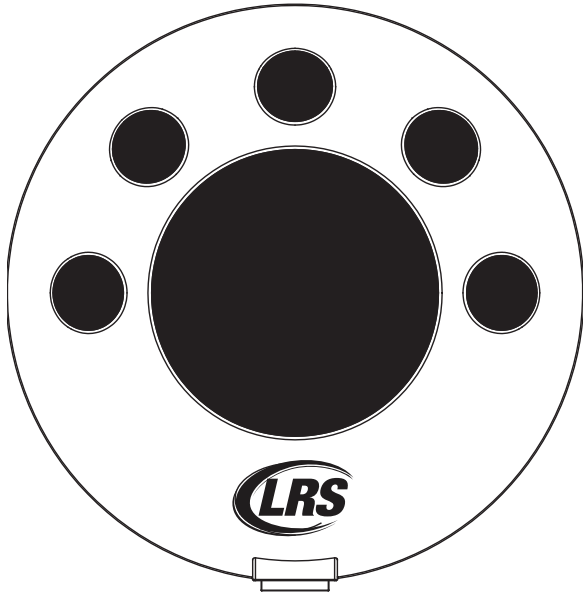


7. Click “Edit” in the corresponding entry for message re-definition.

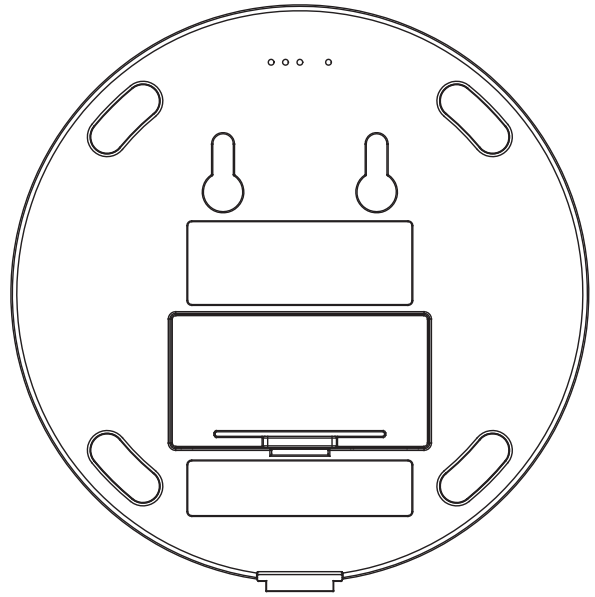


8. Click “Global Configuration” for configuration setting.

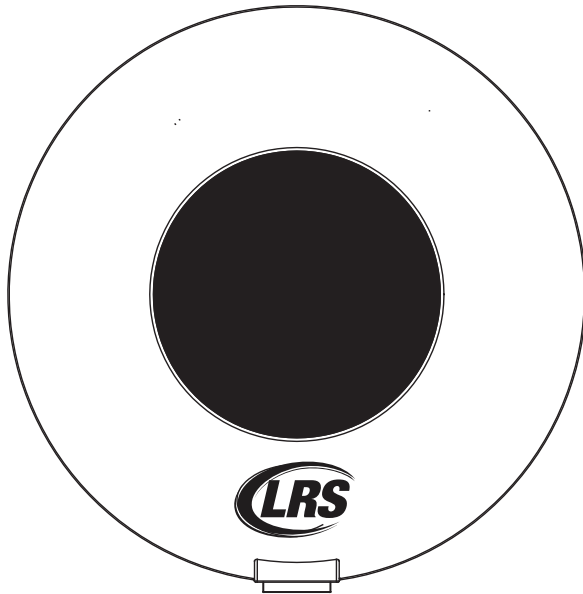




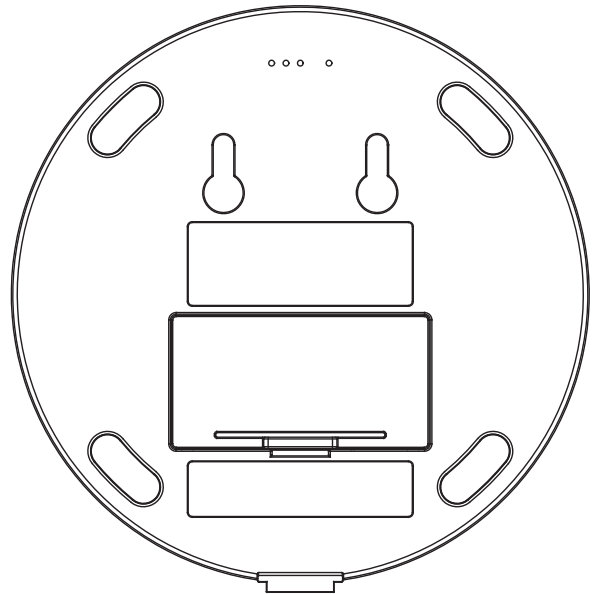
Six Button Front



Six Button Back



One Button Front



One Button Back

FCC Communication Commission Interference Statement

This equipment has been tested and found to comply with the limits for a Class B digital device, pursuant to Part 15 of the FCC Rules. These limits are designed to provide reasonable protection against harmful interference in a residential installation. This equipment generates, uses and can radiate radio frequency energy and, if not installed and used in accordance with the instructions, may cause harmful interference to radio communications. However, there is no guarantee that interference will not occur in a particular installation. If this equipment does cause harmful interference to radio or television reception, which can be determined by turning the equipment off and on, the user is encouraged to try to correct the interference by one of the following measures:

- Reorient or relocate the receiving antenna.
- Increase the separation between the equipment and receiver.
- Connect the equipment into an outlet on a circuit different from that to which the receiver is connected.
- Consult the dealer or an experienced radio/TV technician for help.

FCC Caution: Any changes or modifications not expressly approved by the party responsible for compliance could void the user's authority to operate this equipment.

This device complies with Part 15 of the FCC Rules. Operation is subject to the following two conditions: (1) This device may not cause harmful interference, and (2) this device must accept any interference received, including interference that may cause undesired operation.

WARRANTY

Long Range Systems LLC warrants this product against any defects that are due to faulty material or workmanship for a one year period after the original date of consumer purchase. The warranty does not include damage to the product resulting from accident, **misuse, improper electrical connection, or failure to charge the product within 30 days of receipt. Rechargeable pagers are required to stay on charge while not in use. Rechargeable pagers that are left off of charge for longer than 30 days will have a negative impact on the life of the batteries requiring them to be replaced thus voiding the warranty.** If this product should become defective within the warranty period, we will repair or replace it with an equivalent product, free of charge. LRS will return your product via UPS ground shipping. All warranty claims must be initiated through our customer service department:

Long Range Systems, LLC | 4550 Excel Pkwy, Suite 200 | Addison, TX 75001 | 800-437-4996 | www.pager.net

No return or replacement can be received without prior authorization and the proper RMA Number posted to the outside of the shipping container.

This warranty gives you specific legal rights and you may also have rights that vary from state to state.

Copyright © 2012, Long Range Systems, LLC All Rights Reserved.

This document contains proprietary information of Long Range Systems, LLC. (LRS) and is intended for use only by its employees or customers. None of the material contained herein may be copied, reproduced, republished, downloaded, displayed, posted, or transmitted in any form or by any means, including but not limited to, electronic, mechanical, photocopying, recording, or otherwise without the prior written permission of LRS. Additional copies of this manual may be obtained by contacting LRS.

Screen displays, keyboard layouts, hardware descriptions, or software are proprietary to LRS and are subject to copyright and other intellectual property rights of LRS and shall be treated in accordance with the previous paragraph.

All attempts have been made to make the information in this document complete and accurate. LRS is not responsible for any direct or indirect damages or loss of business resulting from inaccuracies or omissions. Specifications and other information contained within this document are subject to change without notice.

Long Range Systems, LLC reserves the right to make changes without further notice to any products herein. Long Range Systems, LLC makes no warranty, representation or guarantee regarding the suitability of its products for any particular purpose, nor does Long Range Systems, LLC assume any liability arising out of the application or use of any product or circuit, and specifically disclaims any and all liability, including without limitation consequential or incidental damages. "Typical" parameters that may be provided in Long Range Systems, LLC data sheets and/or specifications can and do vary in different applications and actual performance may vary over time. All operating parameters, including "Typicals", must be validated for each customer application by customer's technical experts.

Long Range Systems, LLC products are not designed, intended, or authorized for use as components in systems intended to support or sustain life, or for any other application in which the failure of the Long Range Systems, LLC product could create a situation where personal injury or death may occur.

Should Buyer purchase or use Long Range Systems, LLC products for any such unintended or unauthorized application, Buyer shall indemnify and hold Long Range Systems, LLC and its officers, employees, subsidiaries, affiliates, and distributors harmless against all claims, costs, damages, and expenses, and reasonable attorney fees arising out of, directly or indirectly, any claim of personal injury or death associated with such unintended or unauthorized use, even if such claim alleges that Long Range Systems, LLC was negligent regarding the design or manufacture of the part, device or system.

EU DECLARATION OF CONFORMITY

We, Long Range Systems hereby declare under our sole responsibility that the Pronto paging system and on-site pagers complies with the essential requirements in the European RE&TTE Directive 1999/5/EC of the European Parliament of the Council of 9 March 1999 on radio equipment and telecommunication terminal equipment and the mutual recognition of their conformity. The following standards were utilized:

ETS 300 224: 1998 EN 301 489-2: 2002

EN61000-3-2: 1998 EN 61000-3-3: 1995

EN 60950: 1992 with A1, A2, & A3