

Table Genie UHF

USER MANUAL



Installation, Warranty and Service Information



Long Range Systems, Inc.
4550 Excel Parkway, Suite 200
Addison, TX 75001
800.437.4996 • www.pager.net

Table Of Contents

Getting Started	2
Software Installation	3
Connecting the Programming Cable	4
Using the Programming Software	5
Global Configuration	5
Table Configuration	7
Pager Programming	9
Programming and Reading Table Genie Units	11
Cleaning Instructions For LRS Paging Equipment	14
Warranty	15

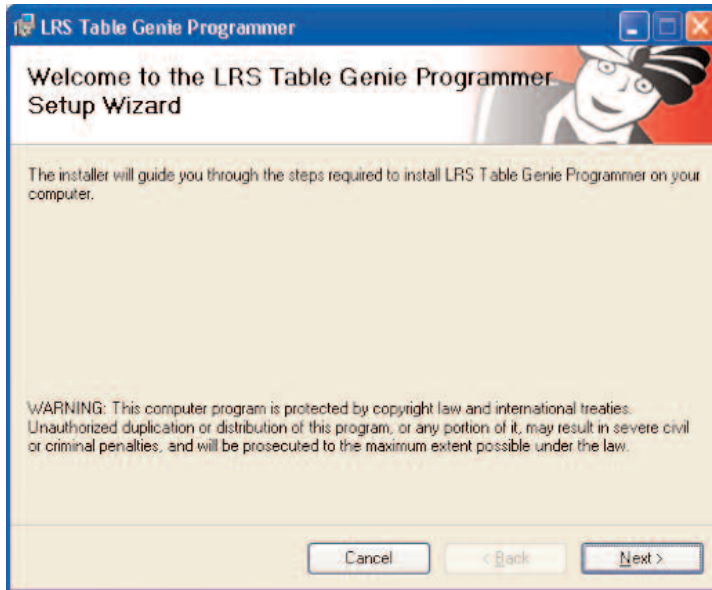
GETTING STARTED

Software Installation

Insert the software disk into the disk drive on your computer. The installation should auto-run. If not, navigate to the Installer.msi file located on the installation disk and run it manually.

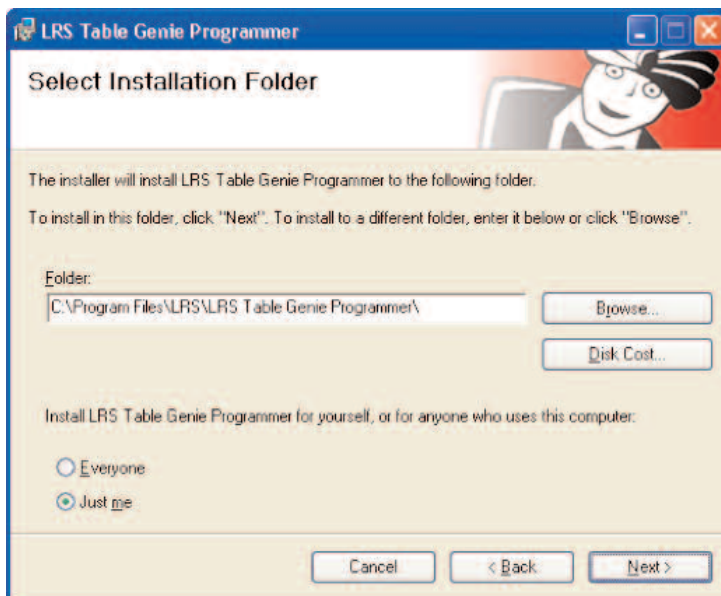
Step 1 –

Once the installation wizard begins, you will see the screen shown below. Click 'Next' to continue.



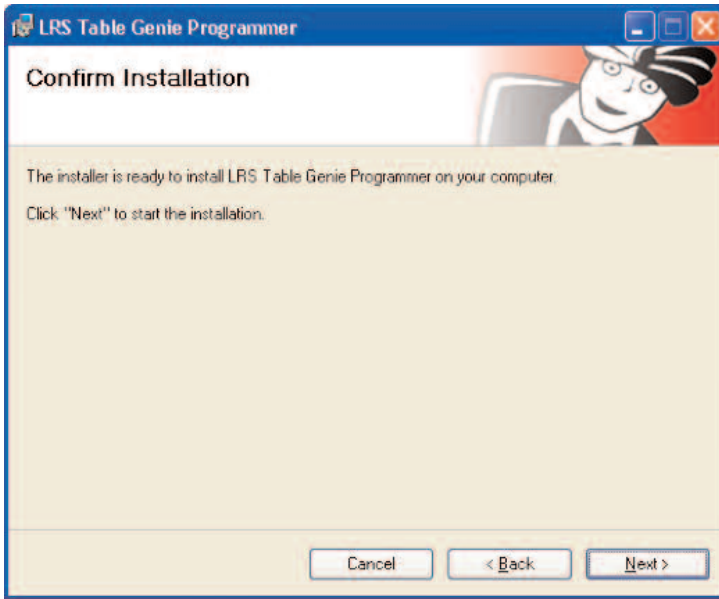
Step 2 –

In this step of the installation wizard you can select where the file is to be installed at on your computer as well as which users on this machine will have access to the program. It is recommended that you leave the file location at its default setting. Once the location is selected, click 'Next' to continue.



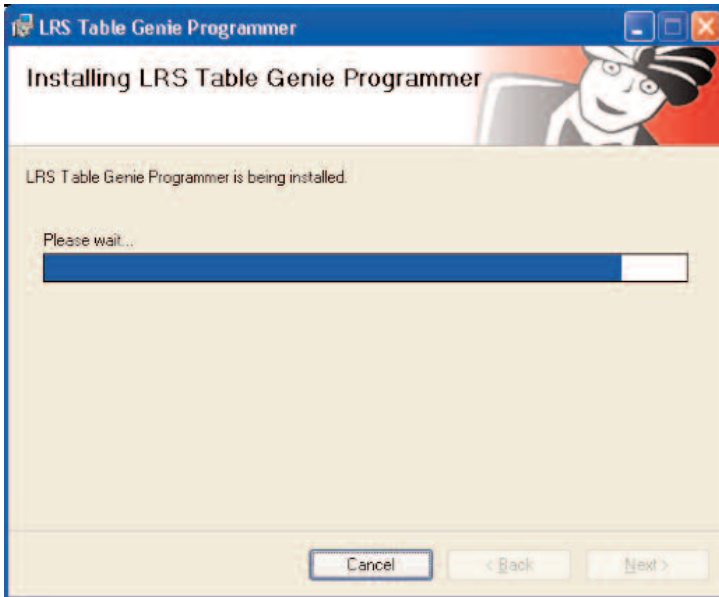
Step 3 –

This is the confirmation screen indicating that you are about to install the software. Click 'Next' to continue



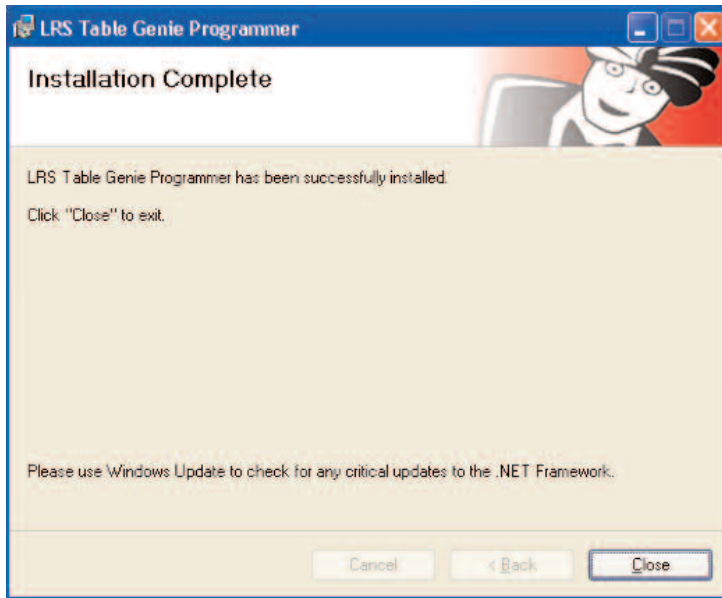
Step 4 –

Once you begin the installation process, you will see a completion bar indicating how far along you are into the installation process



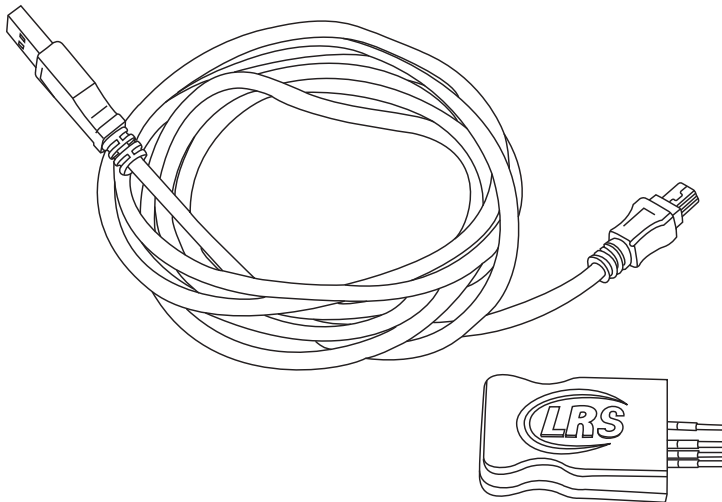
Step 5 –

This is the final step in the installation wizard. Click 'Close' to complete the installation process.

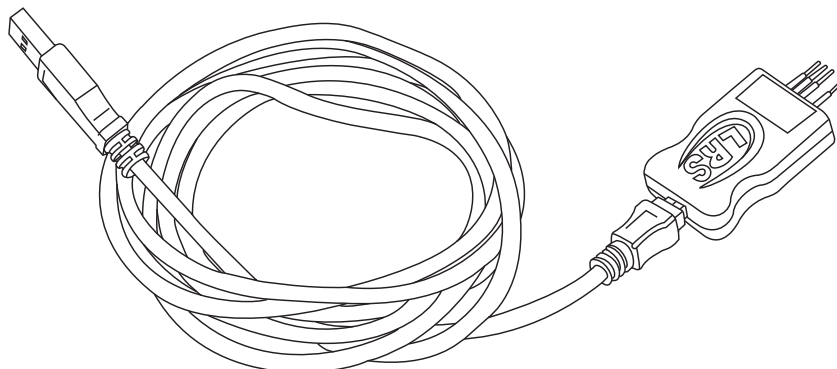


Connecting the Programming Cable

Included in your software kit, is a mini USB cable with an LRS programming adapter.



Connect the LRS programming adapter to the mini USB cable.



Connect the complete programming cable to an available USB port on your computer.

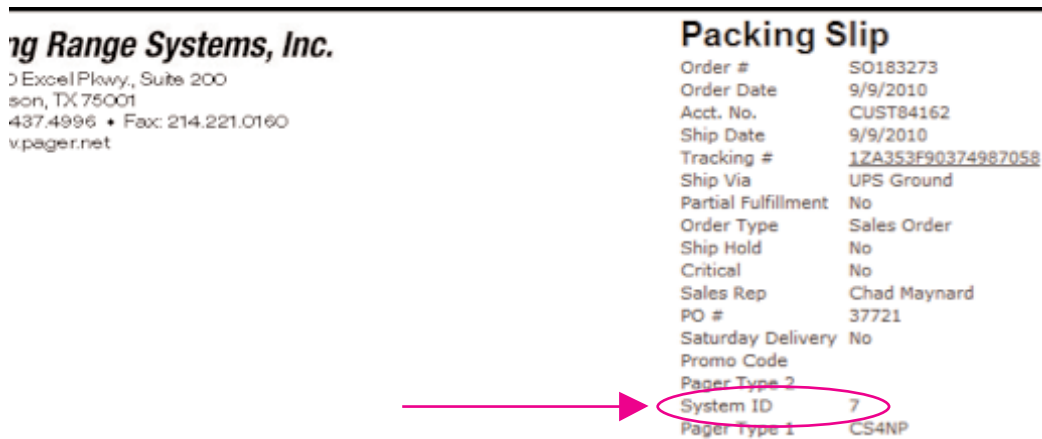
USING THE PROGRAMMING SOFTWARE

Global Configuration

The Global Configuration Settings are settings that will be programmed into all Table Genie units once the specific table information is uploaded to them. These settings should be configured before creating any tables under the Table Configuration tab.

System Id

In order to prevent other LRS paging systems in the area from conflicting with your LRS paging system, your pagers and Table Genies may be on a system ID other than the default of zero. To determine if the system ID on your programming software should be set to something other than zero, look on the right hand side of the packing slip included with your order for the field marked 'System ID'.



If you do not have your packing slip for reference, contact LRS Customer Support at 1-800-437-4996 for further instruction.

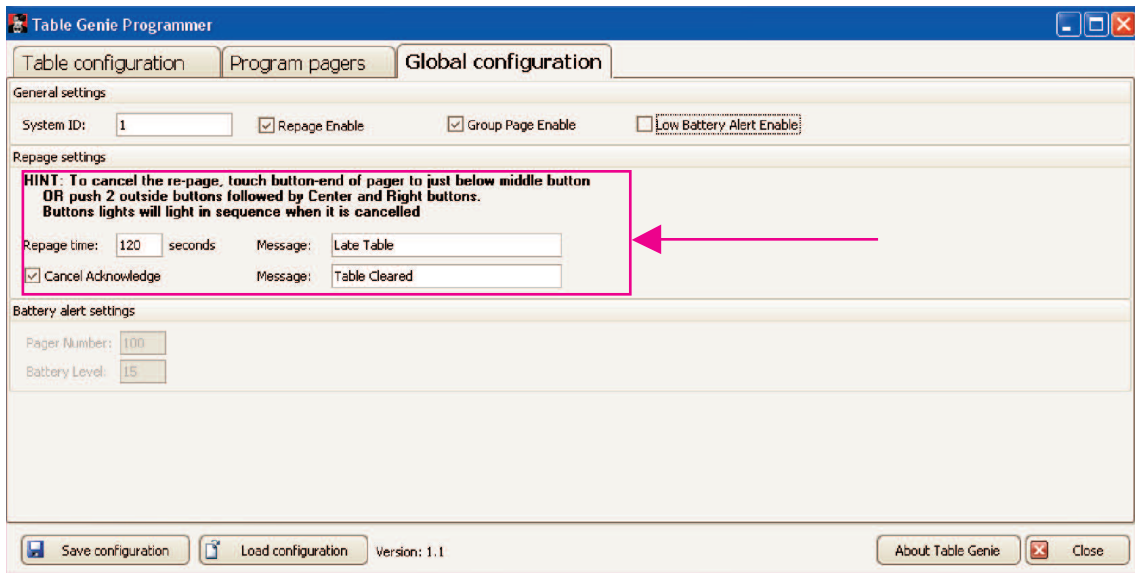
Repage Enable

Marking the repage enable field will cause the Table Genies to repage the pager up to three times. The Table Genie will only repage if the request has not been cleared within the time you specify as the repage interval.

Cancel Acknowledge

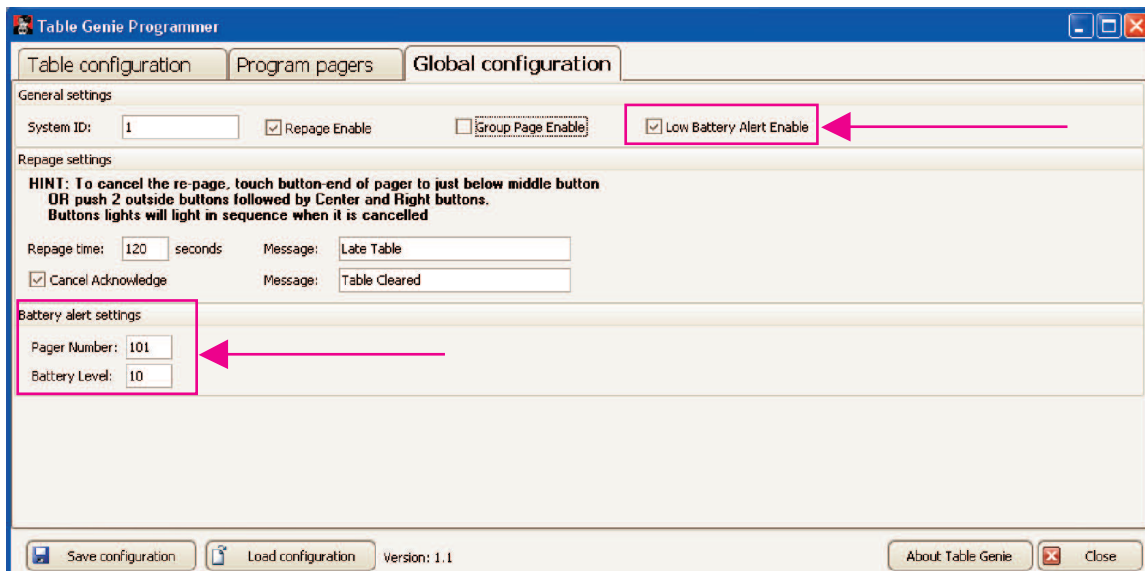
When the repage field is enabled, you will have the option for your Table Genies to send out a cancel acknowledgement page. With this feature enabled, a page will be sent to the corresponding pagers when the page has been cleared and assistance is no longer needed.

In the example screen shown on the next page,, the repage function has been enabled at 120 second intervals and will send a 'Late Table xx' message to the manager pager designated for this particular unit (manager pager assignment is covered in the table configuration section) after the third re-page interval has expired. If a page is cleared at the table unit at any point, the Table Genie will send a "Table Cleared xx" message.



Low Battery Alert Enable

When enabled, this feature will notify the pager of your choice when a Table Genie's battery level drops below the specified threshold (threshold is in percent value).



Group Page Enable

Enabling this feature will allow pagers that have been previously programmed into groups to be called by their group number simultaneously. Enabling this feature will not allow you to page any individual pager numbers that have been programmed below number 100.

To program a Table Genie to page groups:

- Enable group paging on the 'Global Configuration' tab.
- When creating a new table (see programming Table Genies in the next section).
- On the 'Table Configuration' tab, enter the group number into the pager number field that a particular Table Genie or button on a Table Genie is supposed to page when a button is pressed.

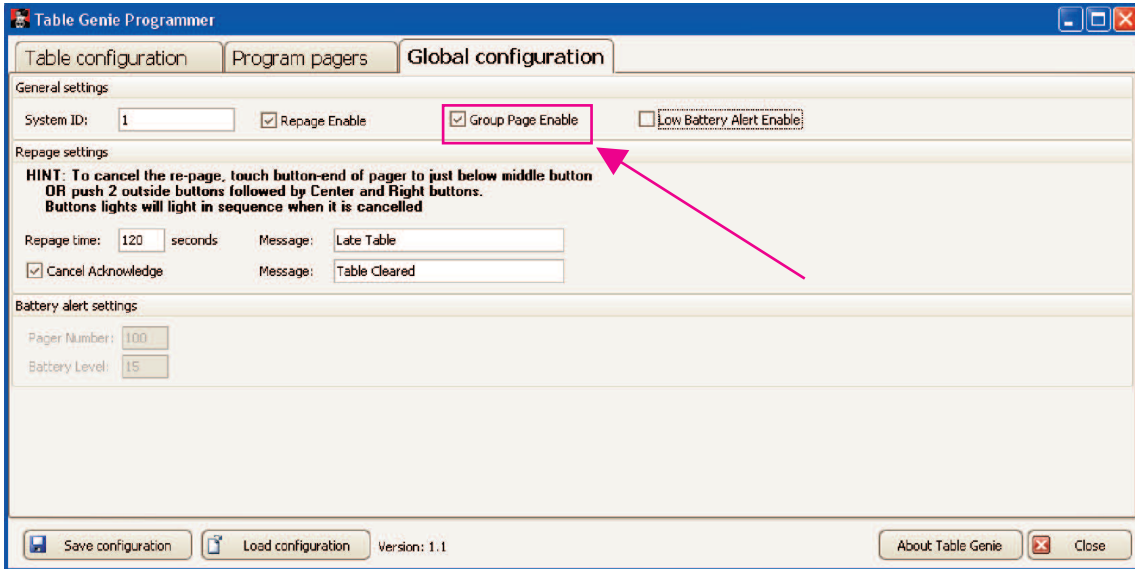
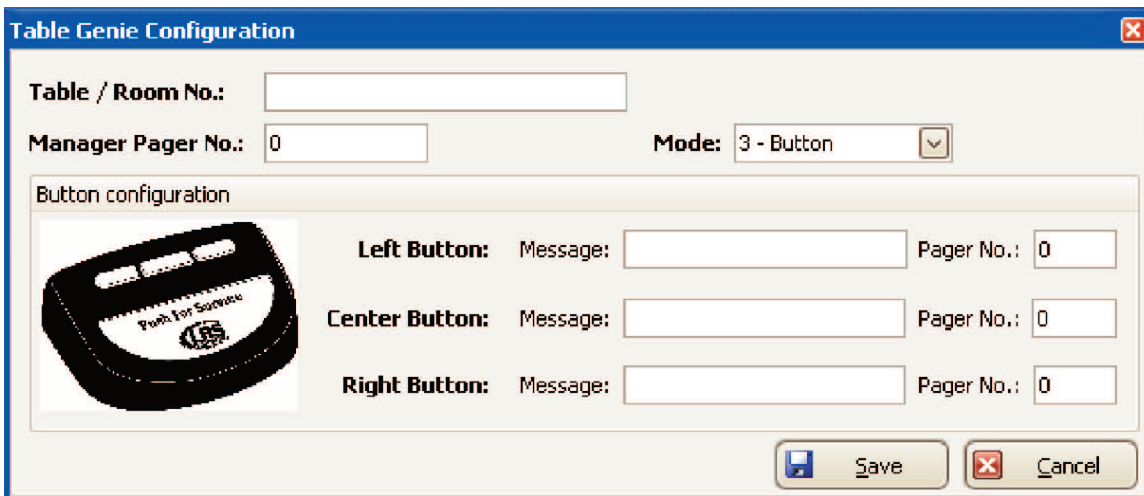


Table Configuration

The table configuration tab allows for the individual programming of each Table Genie unit used with your system. The individual pager or group numbers that are to respond to a button press as well as the message that each pager receives when a particular button is pressed are configured in this tab.

To begin configuring your tables, click on 'New Table'. Once you click on new table, you will see the configuration fields shown below:



Table/Room No.

This field is used to uniquely identify the Table Genie Unit being programmed. This is a free form field and can be alpha, numeric, or alpha-numeric characters. The name given to the Table Genie is part of the message sent to the pager when a page is sent allowing the person responding to the page know where the page originated from.

Manager Pager No.

When the re-page feature is enabled (see Global Configuration) the pager number entered into the manager pager field will be notified if a page request is not cleared within the designated three re-page intervals.

Mode

There are three different types of modes that can be set on the Table Genie. The definition of each of these modes is as follows:

- 1 Button:* When pressed, each of the three buttons will send the same page. Only one pager number or one group number can be alerted with only one message in this mode.
- 2 Button:* Only the outside two buttons can be programmed to send a page when pressed. In this mode, the middle button is inactive. Only two pager numbers or group numbers can be alerted with their respective messages in this mode.
- 3 Button:* All three buttons can be programmed to send a page. Three different pager numbers or group numbers can be alerted with their respective messages in this mode.

Left, Center, and Right Buttons

Each button can be programmed to send a different message to a different pager or group. To configure each button, type in the message and pager or group number that each button is supposed to alert when pressed.

Saving a Configured Table

Once you have finished configuring the table, press the save button and the table will be saved to the table configuration tab. You are then free to create the next table as needed.


Table Genie Configuration

Table / Room No.: 1

Manager Pager No.: 200

Mode: 3 - Button

Button configuration



Left Button: Message: Check Pager No.: 102

Center Button: Message: Service Pager No.: 102

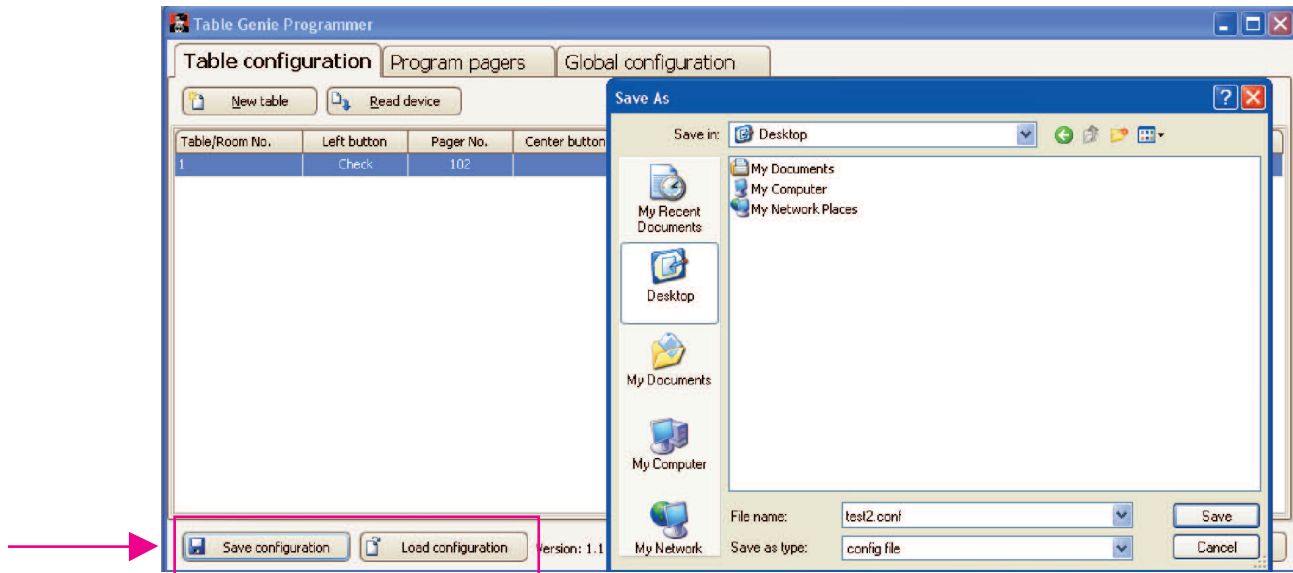
Right Button: Message: Manager Pager No.: 200

Save Cancel

Saving and Loading Your System Configuration

Once all tables have been configured and saved to the 'Table Configuration' tab, it is recommended that you save your system configuration to a file on your computer. This will create a backup that can be loaded at a later date if need be. Backing up your configuration will save you from having to recreate your table list should something happen to your system.

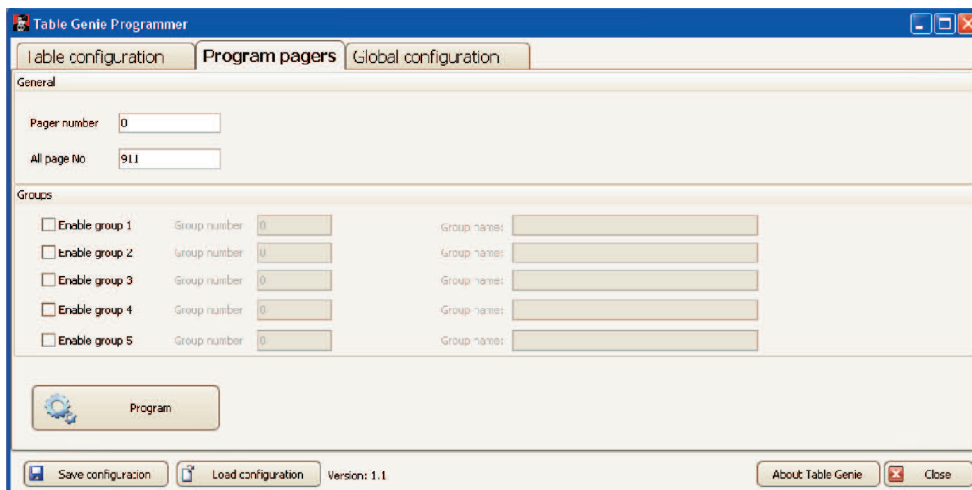
To save your system configuration, click on the 'Save Configuration' button at the bottom left of the table configuration tab. You will then be prompted to select a location to save the configuration file.



To load a previously saved configuration, click on the 'Load Configuration' button and select the configuration file to be loaded.

Programming Pagers

The Table Genie will ONLY program LRS Alpha Pagers.

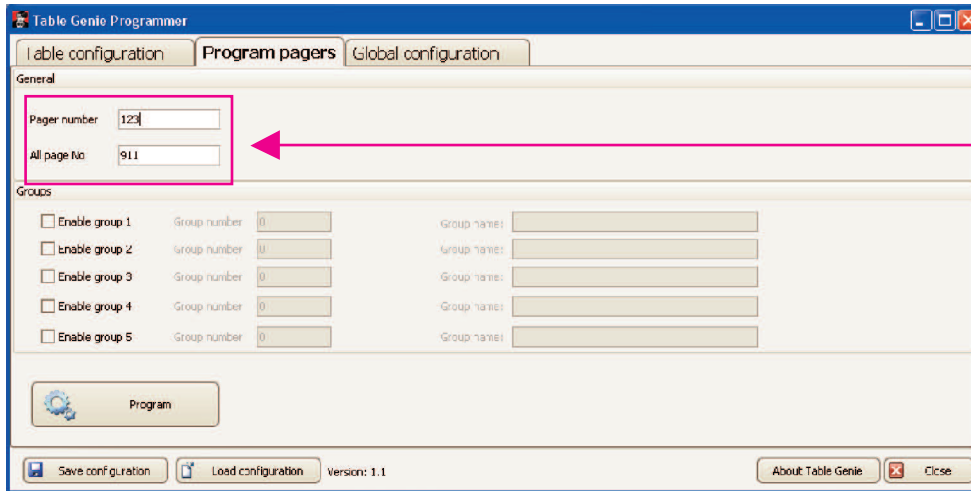


To program an Alpha Pager:

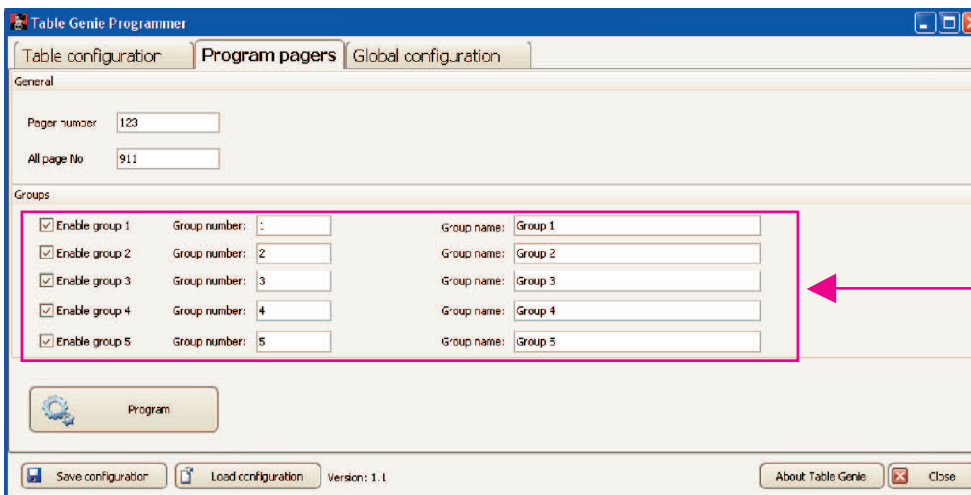
1. Go to the Program Pagers tab.
2. Type a Pager Number and All Page Number (default 911).

Optional: Select to Enable a Group, type a Group Number between 1 and 99, and type a Group Name.

3. Press Program
4. For battery operated Alpha Pagers, insert the battery. For rechargeable Alpha Pagers, remove the pager from a charger.
5. At Programming Instructions screen, press Program.
6. User should hear 13 beeps for programming.



General Pager Programming



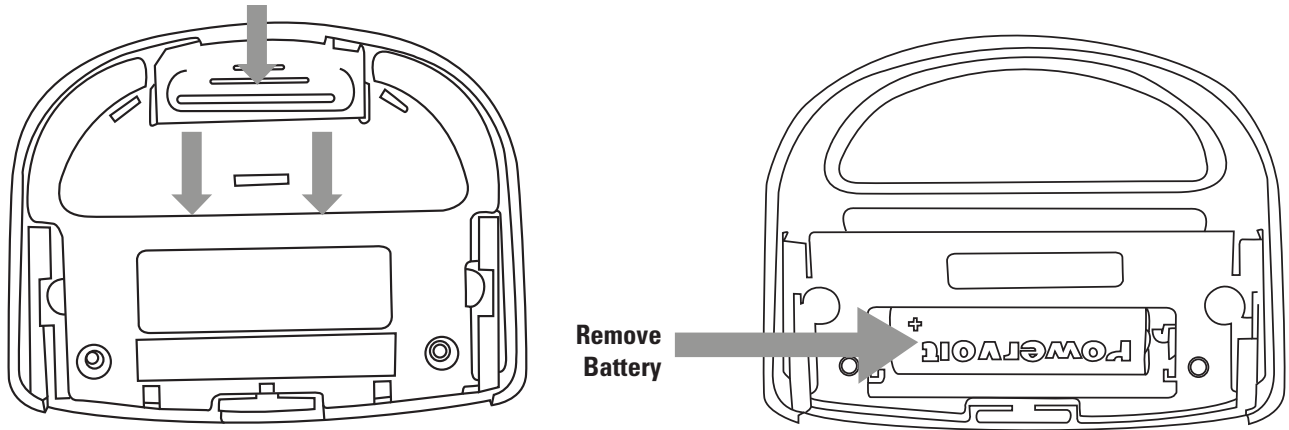
Programming Group Pagers

Programming and Reading Table Genie Units

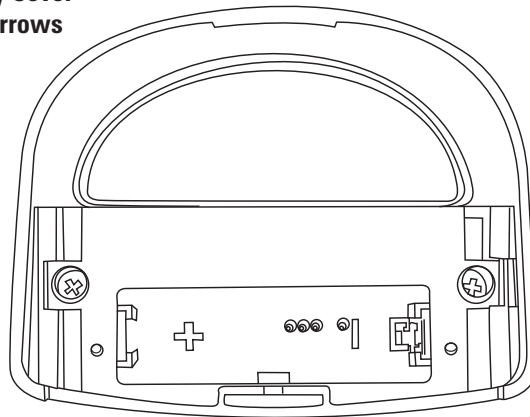
Once the global configuration has been set and the tables have been configured, you are now ready to begin programming the Table Genie units.

To program a Table Genie with a specific table configuration:

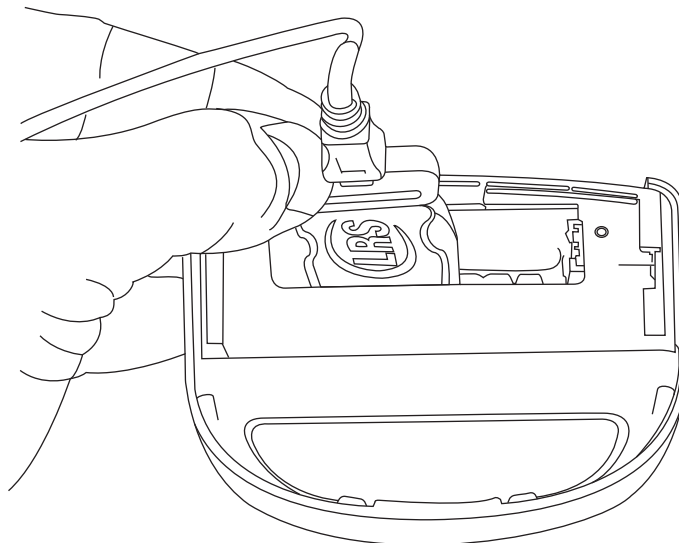
1. Connect the programming cable to the computer (see Connecting the Programming Cable).
2. Remove the battery door compartment and the battery from the Table Genie.



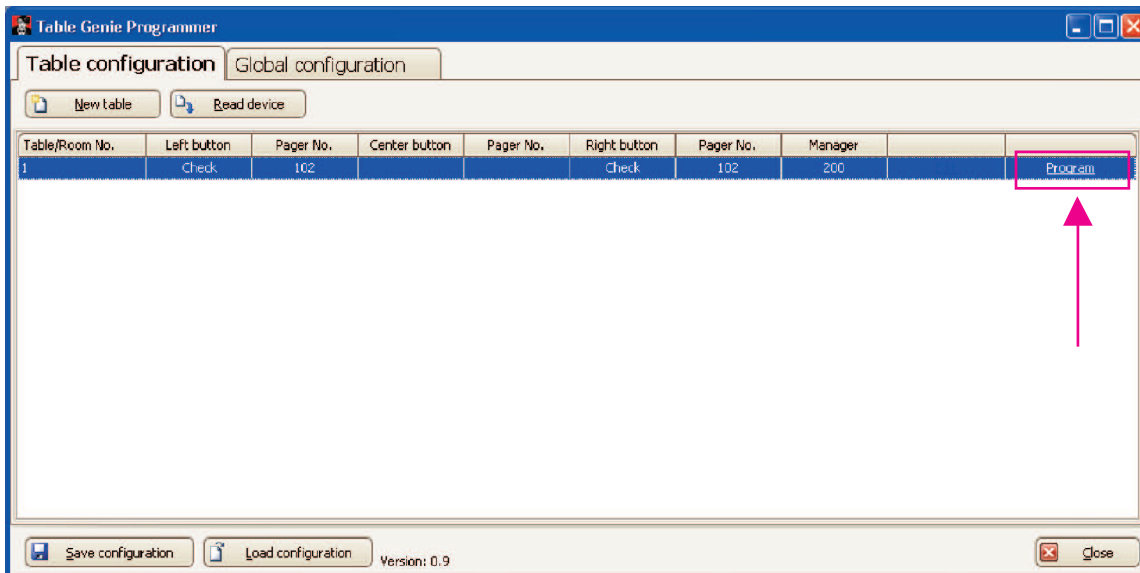
**Release Tab of Battery Cover
Pull in Direction of Arrows**



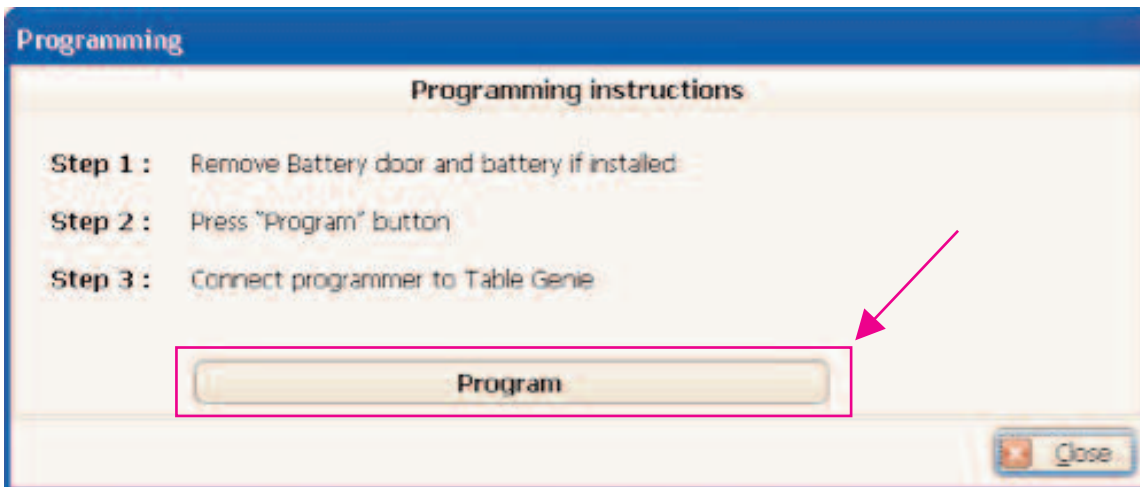
3. Insert the pin end of the programming cable to the pin port located inside the battery compartment and press down.



4. While holding the programming cable in place, click on the 'Program' link for the desired table.

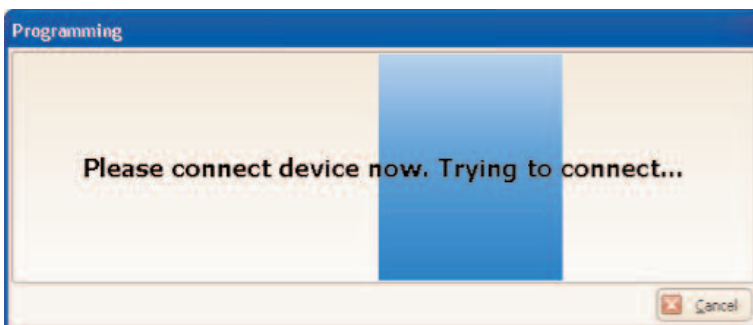


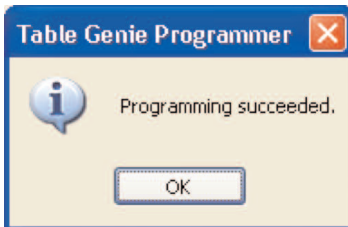
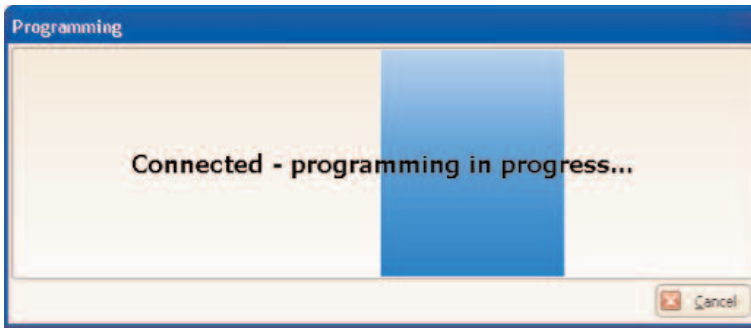
5. You will see a pop-up screen with continuing instructions



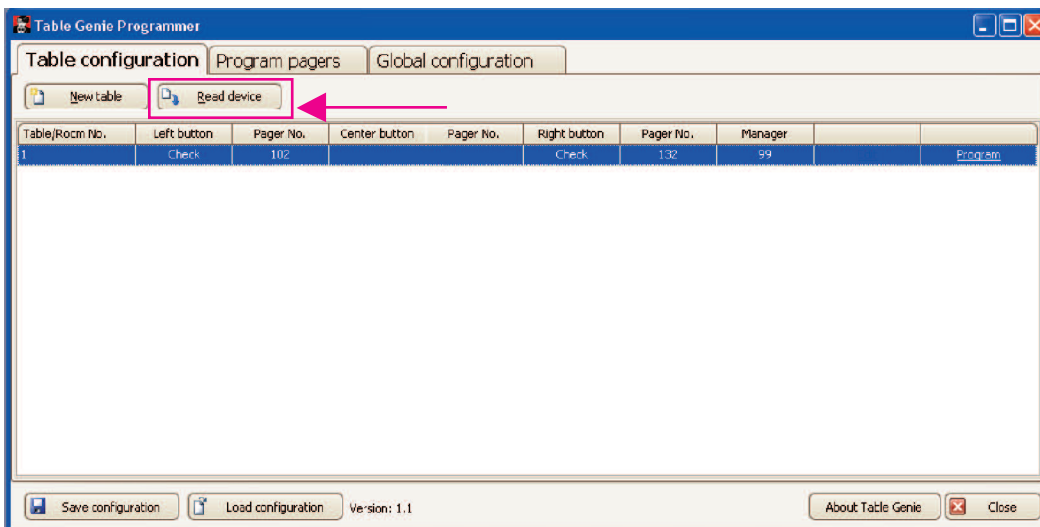
6. While continuing to hold the programming cable in place, click on the program button.

7. You will see a series of screens as the Table Genie is being programmed followed by a confirmation that the programming has succeeded.

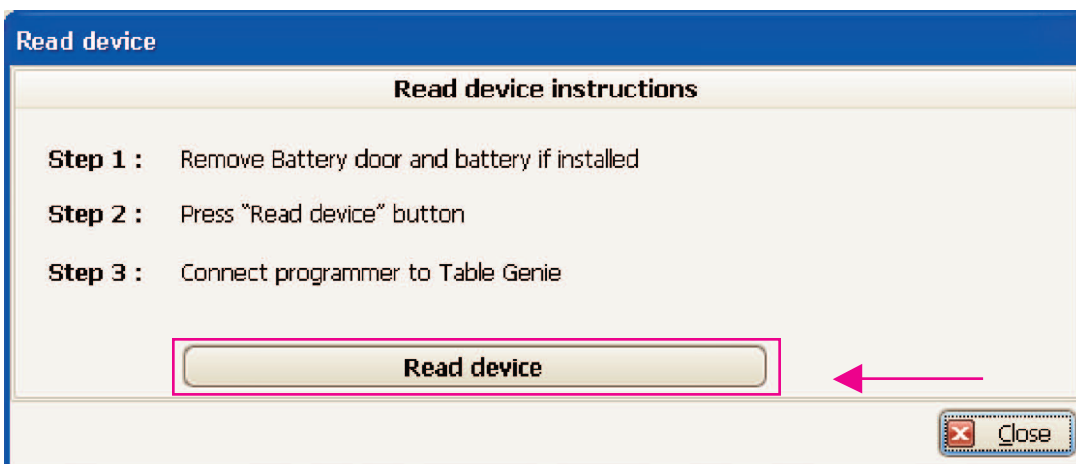




To read a previously programmed Table Genie, follow steps 1-3 shown above and click on 'Read Device'.



While holding the programming cable in place, click 'Read Device'.



Once the device is successfully read, you will see a pop-up screen showing all of the settings loaded on that particular Table Genie unit.

Cleaning Instructions For LRS Paging Equipment

Cleaning:

LRS pagers and equipment are made from industrial-strength, polycarbonate material. However, this material is susceptible to hairline cracking if non-approved cleaners are used. When cleaning LRS pagers, we recommend only using ISOPROPYL ALCOHOL-BASED CLEANERS.

To clean the equipment:

1. Take a clean rag and an isopropyl-alcohol based cleaner.
2. Soak the clean rag with the isopropyl alcohol cleaner.
3. Wipe down the pagers or equipment.

Cleaning equipment with any other non-approved cleaners can weaken plastic and cause hairline cracks. Pagers and equipment that are cleaned with unapproved cleaners and suffer cracking will not be covered under warranty.

Do not submerge any LRS paging equipment in any type of liquid as this will also damage the equipment and is not covered under the standard warranty.

Should you have any questions, please contact the LRS Customer Service Department at 800.437.4996, 214.553.5308 or your local LRS dealer.

LRS Australia
+61 (02) 995 5700
www.lrsaaustralia.com.au

LRS Brazil
5511 41528416
www.lrspager.com.br

LRS Canada
877.607.7243
www.lrscanada.ca

LRS Colombia
(+57) 1 - 7592452
www.lrscolumbia.com

LRS Europe GmbH
+49 531 310542 0
www.lrs.eu.com

LRS Middle East Ltd
+9613 81 82 84
www.lrs-lb.com

LRS South Africa
+27 21 422 4975
www.lrssa.com

LRS United Kingdom
+44(0)1782 537000
www.lrspagers.co.uk

Warranty

Long Range Systems, Inc. warrants this product against any defects that are due to faulty material or workmanship for a one-year period after the original date of consumer purchase. This warranty does not include damage to the product resulting from accident, misuse or improper electrical connection. If this product should become defective within the warranty period, we will repair or replace it with an equivalent product, free of charge. LRS will return your product via UPS ground shipping. All warranty claims must be initiated through our customer service department.

**Customer Service: 800.437.4996
4550 Excel Parkway, Suite 200
Addison, TX 75001**

This warranty gives you specific legal rights and you may also have rights that vary from state to state.

Copyright © September 2010, Long Range Systems, Inc. All Rights Reserved

This manual contains proprietary information of Long Range Systems, Inc. (LRS) and is intended for use only by its employees or customers. None of the material contained herein may be copied, reproduced, republished, downloaded, displayed, posted, or transmitted in any form or by any means, including but not limited to, electronic, mechanical, photocopying, recording, or otherwise without the prior written permission of LRS. Additional copies of this manual may be obtained by contacting LRS.

Screen displays, keyboard layouts, hardware descriptions, or software are proprietary to LRS and are subject to copyright and other intellectual property rights of LRS and shall be treated in accordance with the previous paragraph.

All attempts have been made to make the information in this document complete and accurate. LRS is not responsible for any direct or indirect damages or loss of business resulting from inaccuracies or omissions. Specifications and other information contained within this document are subject to change without notice.

Long Range Systems, Inc. reserves the right to make changes without further notice to any products herein. LRS, Inc. makes no warranty, representation or guarantee regarding the suitability of its products for any particular purpose, nor does LRS, Inc. assume any liability arising out of the application or use of any product or circuit, and specifically disclaims any and all liability, including without limitation consequential or incidental damages. "Typical" parameters that may be provided in LRS, Inc. data sheets and/or specifications can and do vary in different applications and actual performance may vary over time. All operating parameters, including "Typicals", must be validated for each customer application by customer's technical experts. LRS, Inc. products are not designed, intended, or authorized for use as components in systems intended to support or sustain life, or for any other application in which the failure of the LRS, Inc. product could create a situation where personal injury or death may occur. Should Buyer purchase or use LRS, Inc. products for any such unintended or unauthorized application, Buyer shall indemnify and hold LRS, Inc. and its officers, employees, subsidiaries, affiliates, and distributors harmless against all claims, costs, damages, and expenses, and reasonable attorney fees arising out of, directly or indirectly, any claim of personal injury or death associated with such unintended or unauthorized use, even if such claim alleges that LRS, Inc. was negligent regarding the design or manufacture of the part, device or system.

EU DECLARATION OF CONFORMITY

We, Long Range Systems hereby declare under our sole responsibility that the Freedom paging transmitters and on-site pagers comply with the essential requirements in the European RE&TTE Directive 1999/5/EC of the European Parliament of the Council of 9 March 1999 on radio equipment and telecommunication terminal equipment and the mutual recognition of their conformity. The following standards were utilized:

ETS 300 224: 1998

EN 301 489-2: 2002

EN61000-3-2: 1998

EN 61000-3-3: 1995

EN 60950: 1992 with A1, A2, & A3.

XU-0065 101510

FCC INFO

The users manual or instruction manual for an intentional or unintentional radiator shall caution the user that changes or modifications not expressly approved by the party responsible for compliance could void the user's authority to operate the equipment. In cases where the manual is provided only in a form other than paper, such as on a computer disk or over the Internet, the information required by this section may be included in the manual in that alternative form, provided the user can reasonably be expected to have the capability to access information in that form.

This equipment has been tested and found to comply with the limits for a Class B digital device, pursuant to Part 15 of the FCC Rules. These limits are designed to provide reasonable protection against harmful interference in a residential installation. This equipment generates, uses and can radiate radio frequency energy and, if not installed and used in accordance with the instructions, may cause harmful interference to radio communications. However, there is no guarantee that interference will not occur in a particular installation.

If this equipment does cause harmful interference to radio or television reception, which can be determined by turning the equipment off and on, the user is encouraged to try to correct the interference by one or more of the following measures:

- Reorient or relocate the receiving antenna.
- Increase the separation between the equipment and receiver.
- Connect the equipment into an outlet on a circuit different from that to which the receiver is connected.
- Consult the dealer or an experienced radio/TV technician for help.