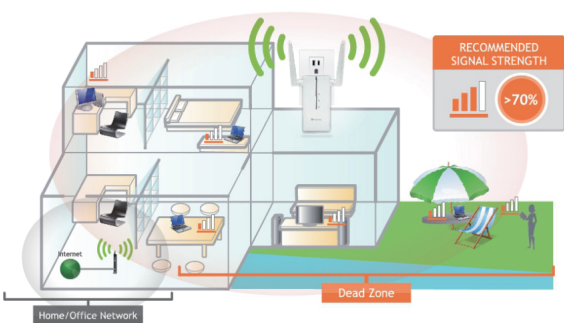


## Step 1 Normal Power 100mW Compact Wi-Fi Range Extender

Find an optimal setup location between your wireless router and your wireless dead zone



Side and Bottom Panel Description



Antenna: Two 2dBi fix external Antenna, WPS/Reset: Hold down for 3 seconds to enable WPS push button configuration, Hold down for WPS 5 seconds later to reset the Repeater back to factory settings.



Wired Devices: RJ-45 ports for connecting wired computers or network devices. Power: Power Plug.

**IMPORTANT:**



PLACE THE SMART REPEATER IN A LOCATION WHERE IT CAN RECEIVE A STRONG SIGNAL FROM YOUR WIRELESS ROUTER

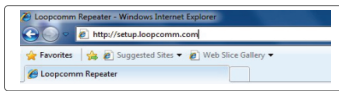
This can be done before or after setup is complete. The Smart Repeater will save your settings.

## Step 2 Connect your PC or Tablet to the Smart Repeater



- Plug the Smart Repeater into a power outlet.
- Connect network cable to an available network port on your computer

## Step 3 Open your web browser



Enter the setup web address into your browser:

**http://setup.loopcomm.com**

If the URL fails to open, then try: <http://192.168.1.250>

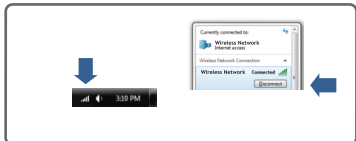
Recommended browsers: Google Chrome, Safari or Internet Explorer (8.0 and up). Do not use Firefox.

### IF YOU HAVE PROBLEMS ACCESSING THE WEB MENU...

Disconnect your PC from wireless networks, open your browser and try again.

Windows 7 & Vista (example)

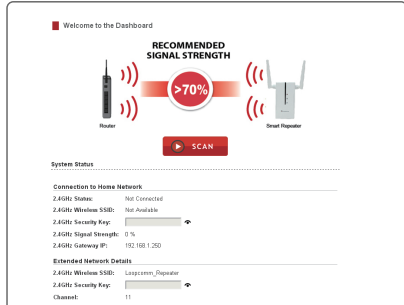
- Click on the Wireless icon to see available wireless networks (For Vista, click Start > Connect To).
- Select your current wireless network and click **Disconnect**.
- Power the Smart Repeater off and back on and try <http://setup.loopcomm.com> again.



**!** If you are still having trouble accessing the Web Menu, disconnect the cable from your computer to the Smart Repeater. Connect wireless using the SSID: **Loopcomm\_Repeater** and Password: **Loopcomm** and try again.

Accessing the Smart Setup Wizard does not require Internet access. The menu is served from the Smart Repeater.

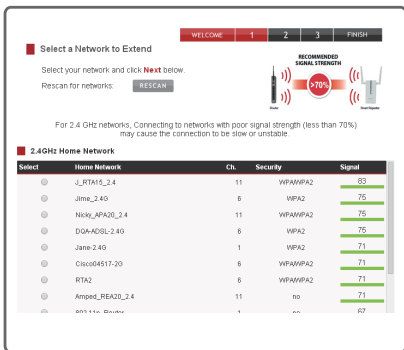
## Step 4 Welcome to the Dashboard



The Dashboard will provide you with the current status of the Smart Repeater.

Click **Scan** to find available networks to extend.

## Step 5 Scan for a Wireless Networks



Click **Scan** to begin scanning for nearby wireless networks.

Highlight and select the wireless network(s) that you wish to repeat.



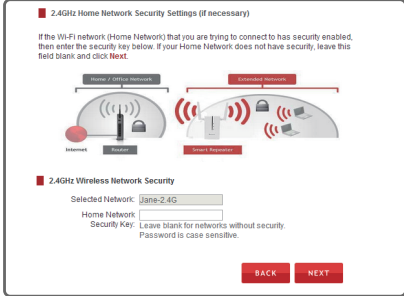
**Recommended Signal**  
Select the wireless network with a signal strength greater than **70%** for the most reliable connection.

Connecting to a weak signal may result in slower speeds or intermittent connectivity.

Click **Next** to continue.

If you do not see your desired wireless networks, move the Smart Repeater closer to the router and scan again as it may be out of range.

## Step 6 Home Network Security Settings (if necessary)

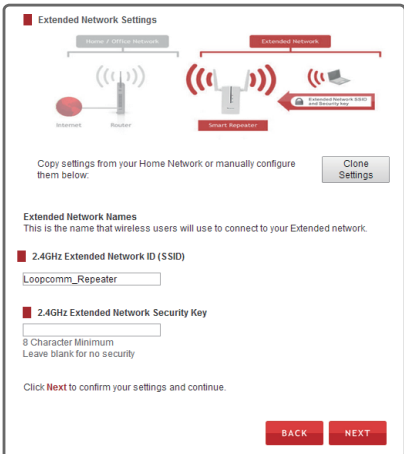


Enter your password and then click Next.

If your wireless home network(s) does not have security enabled, leave the security field blank.

Click **Next** to continue.

## Step 7 Configure Settings for your Extended Network



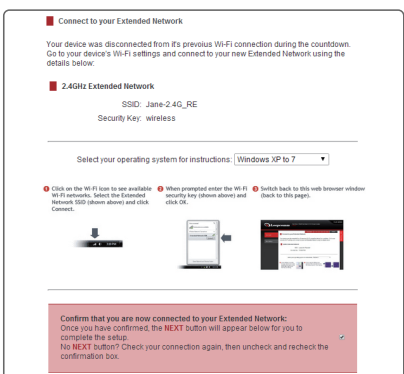
The ID of your Extended Network is: **Loopcomm\_Repeater**

To change it, enter a new name in the SSID field. Users connecting wireless to the Range Extender will use this ID to identify your Extended Network.

Enter a new key in the Security Key field. The key must be at least 8 characters long.

Click **Next** to apply your settings. The Smart Repeater will reboot. This process may take up to one and a half minutes. Do not refresh the web page. The page will automatically reload with the connection status.

## Step 8 Connect to the new Extended Network



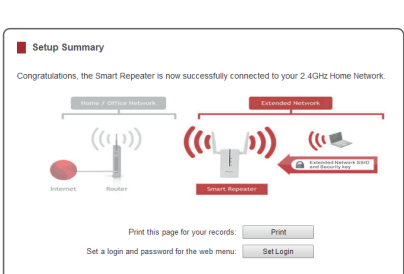
During the countdown process, the Range Extender will reboot and disconnect the Wi-Fi connection. At this point, you will need to reconnect your PC or tablet to the new Extended Network. Follow the instructions on the screen to connect to the Extended Network.

Once you have connected, click the check box to confirm. The **Next** button will appear allowing you to complete the setup process.

If there are problems with your configuration, the setup wizard will inform you to rescan for a network to extend.

If there are no problems, you will see the Setup Summary page below.

## Step 9 Setup Summary



Congratulations, the Smart Repeater is now successfully configured. Your settings are now saved. You may now detach the Ethernet cable from your computer and connect wireless to the Smart Repeater.

If you haven't already positioned your Smart Repeater in an optimal location, you may do so now. All Smart Repeater settings are saved and can be safely powered off for relocation.

You may also attach any wired network devices to the wired ports on the back of the Smart Repeater.

If there was a problem with your configuration, the Smart Setup Wizard will inform you to restart the Wizard and select another network to repeat.