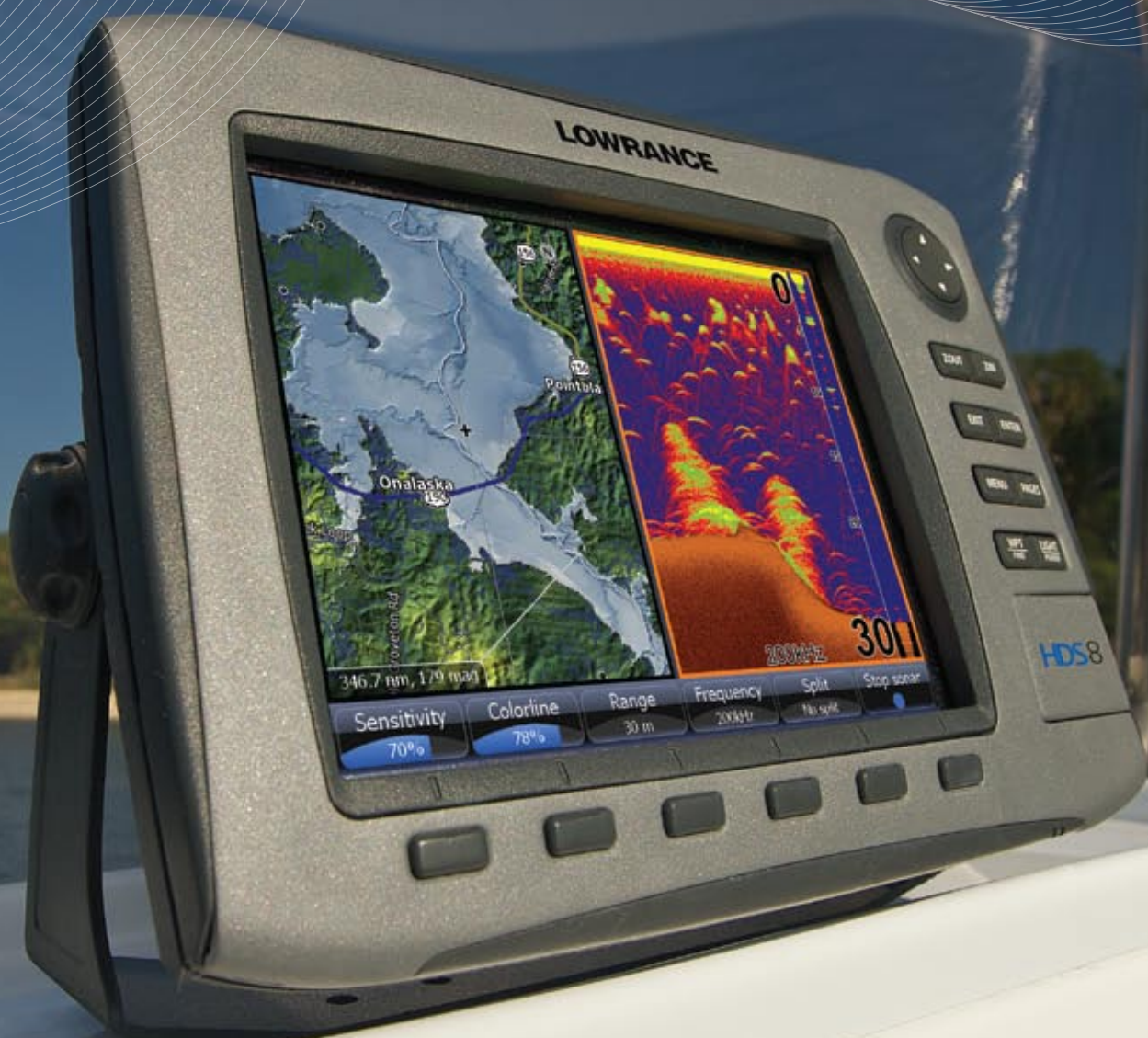


LOWRANCE
Seize the Day

2009

Product Catalog



Introducing **HDS** High Definition System

Welcome to the new world of functional advancements in marine electronics.

Lowrance HDS (High-Definition System): the new, advanced series of multi-function displays that are a revolutionary step forward in fish-finding and navigation-electronics innovation.

They combine the legendary, best-in-class Lowrance technology, fully integrated weather and radar solutions and an attractive case design that is more convenient to install.

Plus, a new easier-to-use operating system simplifies access to frequently used, and the most advanced, features to enhance your pleasure and success.



Lowrance HDS Features	4-7
HDS Fishfinders/Chartplotters	8-13
HDS Chartplotters	14-17
High Definition Digital Radar	18-19
Legendary Fishfinders	20-22
IceMachine™	23
VHF Marine Radios	24-27
Networking & Digital Gauges	28-33
Transducers	34-35
Outdoor GPS Navigation	36-39
Cartography	40-41
Specifications	42-45
About Navico	46-47



It Started in 1957

That's when Lowrance introduced the world's first transistorized and portable sportfishing sonar – the legendary Fish Lo-K-Tor, known by delighted anglers everywhere as the “Little Green Box.” Incredibly innovative for the time and spawning a whole industry, it was bestowed an Anglers' Legacy Innovation Award by the American Sportfishing Association in 2008 as one of the top 10 products that changed the way people fish over the past 75 years.

Lowrance again presents a revolutionary approach in marine electronics with the introduction of HDS in 2009.



The Most Revolutionary Finders Since The Little Green Box

HDS Highest-Definition Broadband Fishfinding

Incredible and award-winning, exclusive Broadband Sounder digital technology is now inside all HDS sonar models for the best Lowrance fishfinding ever! As the vital link between the transducer and your HDS display, Broadband is proven to find more fish with greater sensitivity, higher definition and more display clarity with superior target separation in all cover, in thermoclines and in all water conditions.



Less Noise, More Targets

With Lowrance Broadband digital signal processing software, noise goes way down and sensitivity goes way up. The result: Ultimate target discrimination with incredible high-definition separation of those distinctive Lowrance "fish arch" targets from structure and other fish!

Crystal-Clear Clarity

With advanced digital filtering, Broadband vastly improves at-a-glance display clarity, sharpens bottom images and paints a much cleaner picture of targets that others will miss or show poorly.

Greater Shallow-Water Coverage

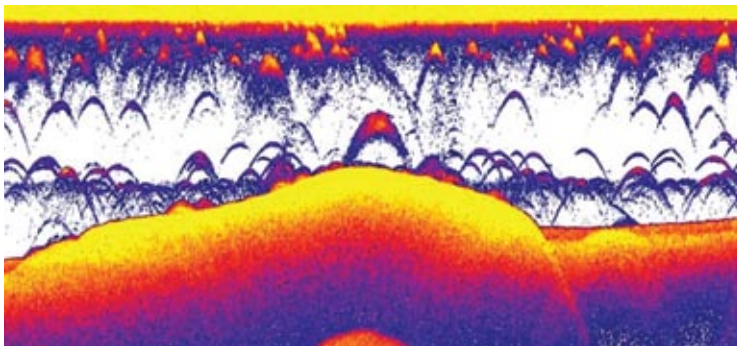
To cover even more water, Broadband automatically adds 83 kHz operation to a Lowrance 200 kHz single-frequency transducer. At 83 kHz, you get full 120-degrees of wide-angle coverage with greatly enhanced definition of fish arch targets.

Incredible Deep-Water Performance

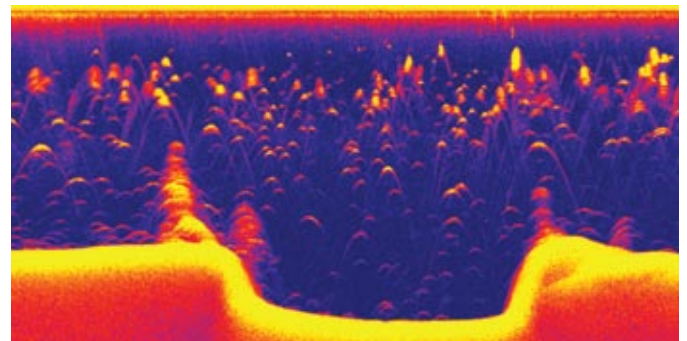
Broadband sounding is serious electronics when the hunt is on for fish in any deep water weather condition. Even at higher boat speeds, Broadband keeps a bottom lock at depth, with exceptional targeting of fish arches on the bottom, around wrecks and other seabed structure. And when used with a high-power transducer, strong bottom locks and water column detail reach down thousands of feet!

Expandability at No Extra Cost

For added value, HDS Broadband-equipped models can turn an HDS GPS Chartplotter (or GlobalMap® chartplotter with yellow ethernet connector) into a powerful combination fishfinder/chartplotter with complete sonar graph control when networked by Lowrance Ethernetnetworks.



Broadband with 83 kHz (shown with white-screen background) provides wider coverage and enhanced target returns, to more easily identify suspended fish in thermoclines and near the surface.



Broadband with 200 kHz (shown with blue-screen background) provides crystal-clear images of fishing hotspots -- like this creek channel with trees at the top of each bank and surrounded by suspended bait and gamefish.

Fantastic High-Definition Mapping

Only Lowrance offers a stunning new world of cartography options that go to greater depths, and heights, in dimensional GPS navigation reference and guidance.

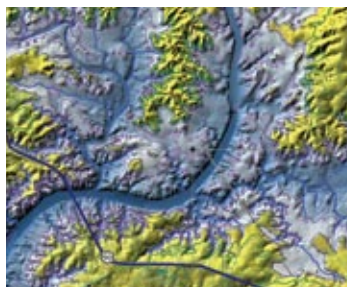
NEW Insight USA™ – A Charting Revolution in Detail and Resolution

Insight delivers unprecedented inland mapping and coastal charting detail with lightning-fast screen display updates. Amazing contour shading lends life-like perspectives to bottom structure as well as topography. HDS Insight mapping choices include:

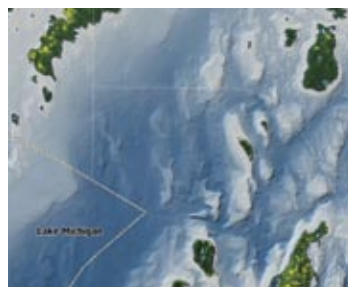
NEW Lake Insight™ U.S. inland mapping (for HDS-5) includes nearly 5,000 freshwater lake maps with life-like perspective of bottom structure and topography. Coverage includes the Great Lakes and more than 500 Fishing Hot Spots® Lakes – a \$400 value!

NEW Nautic Insight™ (for HDS-5) offers a superior like-like view of coastal bottom structure with detailed coastal and offshore depth contours, plus nav aids, for the entire U.S. coastline.

NEW Insight USA™ (for HDS-7, -8 and -10 models) combines inland and coastal coverage areas of Lake Insight™ and Nautic Insight™.



Lake Insight™
Amistad Reservoir, Texas



Lake Insight™
Lake Michigan, Michigan



Nautic Insight™
Puget Sound, Washington



Nautic Insight™
Nantucket Sound, Massachusetts

Expanded Basemap Marine Detail

HDS models with Enhanced U.S. Basemap offer the same geographic coverage area as Insight, with over 100,000 bodies of water and nearly 5,000 enhanced U.S. lakes with high detail lake shorelines and contours.



Enhanced
basemap
includes detailed
shoreline and
lake depth
contours

HDS Mapping Options Go All-Platinum

Your trusted favorites in Lowrance 2D mapping choices, like Fishing Hot Spots® PRO and LakeMaster® ProMaps are fully functional with HDS. Lowrance HDS expands your world of high-detail, high-definition 3D charting options with total compatibility for all 2009 (and earlier) Navionics® chartcards.

Platinum+ and Platinum – Revealing 3D views of bottom structure, and incredibly detailed satellite imagery, for the ultimate enhancement to navigation and fishing.

HotMaps Platinum – Fantastically detailed 3D lake surveys with fishing points of interest give marked advantages for the serious angler and tournament competitor.

Exclusive TurboView™ Advantage – This exclusive HDS built-in graphics engine delivers seamless zooms and 2D-3D chart displays, real-time 3D map nav data overlay, striking depth views in 2D and 3D, plus high-speed panning/zooming with detailed aerial views for all Platinum chartcards, and seamless zoom for Navionics® Gold.

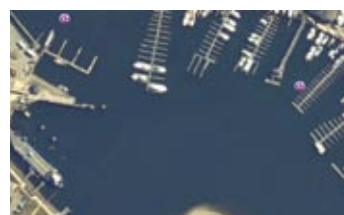
Plays Navionics® Favorites – HDS is also fully compatible with your library of Navionics® Gold, Silver, Classic and HotMaps chartcards.



Navionics®
Platinum+ with
TurboView™



Navionics®
Platinum+ with
Aerial View



Navionics®
Platinum+ 3D
View

HDS *High Definition System*



The Most Revolutionary Finders Since The Little Green Box

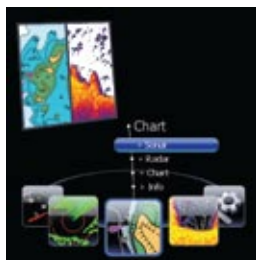
HDS Redefines 'Ease of Use'

Viewing and control have never been easier, nor more user-friendly. From basic operation to advanced professional functionality, HDS is thoughtfully designed to take you to the next level.



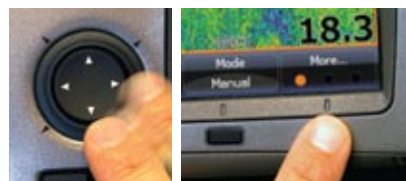
Stylish and Retrofit-Ready –

True, HDS sports a more modern design to enhance any boat helm. Yet, by design, HDS makes it easy to upgrade your Lowrance electronics. HDS is compatible with late-model Lowrance transducers, plus yellow Ethernet networks and NMEA 2000® network connectors.



Enjoy Our New Menu Selection –

The new, more versatile HDS operating system presents a new way to view and select Lowrance features. This new menu format is both easy to grasp and thoughtfully functional, so you can fly through keypad functions control with the greatest of ease and speed.



A Touch Better –

For even easier and quicker control, HDS-8, -8m, -10 and -10m models feature a unique new FlyWheel™ scroll dial, as well as a bank of soft command keys for the fastest access to functions. So, you spend less time operating and more time fishing.

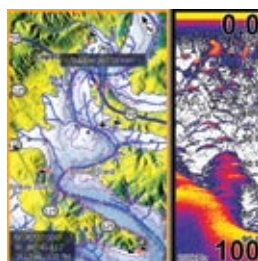


LGC-4000

Better to Find Yourself –

With a built-in, high-sensitivity 16-channel GPS+WAAS antenna HDS is a superior solution for both bracket mount, and in-dash installs with the convenience of front mounting. Plus, the internal GPS antenna also networks with NMEA 2000® systems for data sharing. No external antenna to place, no mess, no fuss. Just advanced GPS accuracy with strong satellite locks and less track plot wander.

For closed-cabin installs, there's also a new and compact LGC-4000 external GPS+WAAS antenna module option for HDS with a true, real-time satellite signal update rate of five times per second for incredible location accuracy. For details, see page 28.



Screen Star –

In the easy-to-view category, HDS really shines. New SolarMAX™ PLUS color displays render fantastic detail in sunlight, with the best wide-angle viewing ever achieved. In fact, most now deliver nearly twice the brilliance with significantly-reduced power draw than before! Plus, super-white LED backlighting has zero-dim for eye-soothing night vision protection.

**SOLAR
MAX+**



New 2-year Protection –

Lowrance also warrants that buying HDS will put your mind at ease. Each now come with a new, expanded 2-year limited warranty, protecting you from defects in materials and workmanship under normal use for a full 24 months after purchase. At no extra cost. Optional two-year extended warranty also available for purchase.

HDS Newly-Defined Expandability Options

Lowrance HDS for 2009 presents a wider range of advanced accessory options to enhance your on-the-water experience, safety and enjoyment.

High-Definition Weather – Now Adds Inland Choice to Standard Offshore Coverage!

New LWX-1 SIRIUS® Satellite Weather/Radio Smart Antenna

Lowrance presents two industry firsts with HDS chartplotters: SIRIUS® satellite high-res NOWRad® weather radar and radio services via an affordable and integrated smart antenna/module bundle, AND the first SIRIUS® Inland weather service ... in addition to Coastal coverage ... in two special SIRIUS® U.S. subscription packages!

This compact weatherproof antenna is easy to mount, and provides weather display output to one or more HDS units via Ethernetworks. Plus a standard 3.5 mm stereo jack easily interfaces with onboard sound systems when you include radio with your SIRIUS® subscription for stereo-quality music and sports including NFL, NASCAR and college football broadcasts.

SIRIUS® Inland Weather Service Package:

- Weather radar and lightning with full 2 km (1.2 mile) resolution
- 80 nm (92 mile) lightning and radial weather display to 12 nm (13 mile) limit from coasts
- Tabular weather feed with 5-day forecast display

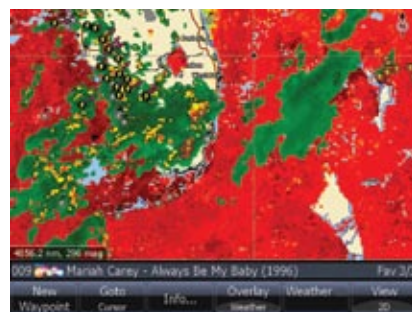
SIRIUS® Coastal/Offshore Weather Service Package:

- Cross-country weather radar and lightning with full 2 km (1.2 mile) resolution
- Sea-surface temperature with higher resolution
- Tropical storm and storm cell tracks
- Four-day forecast of surface pressure, wave height, wave period and direction
- Tabular weather feed with 5 day forecast
- And more

See page 30 for more details.



LWX-1



SIRIUS NOWRad® animated coastal weather radar

High-Definition Digital Radar Choices

LRA-1800 2 kW and LRA-2400 4 kW Radomes

Two choices in Lowrance high-performance digital radar for optimal safety in poor weather or low-light conditions, with added chart overlay feature, are now easily networked for HDS displays via Ethernetworks. See page 18 for more details.

Advanced Networking

Ethernetworks NEP-1 Expansion Port

All HDS models come fully ethernet-ready to share high-speed, high-bandwidth data among all HDS displays on the boat, including sonar graphs, SIRIUS® weather/radio and radar. For added growth and data distribution, there's an optional ethernet expansion port. See page 31 for more details.

Full NMEA 2000® Networking

HDS comes with full connectivity for the advanced NMEA standard in boat systems data sharing, backed by the most extensive and affordable selection of smart sensors for systems monitoring, including engine and fuel flow for optimum operating economies. See page 28 for more details.



LRA-1800
LRA-2400



NEP-1

The Most Revolutionary Finders Since The Little Green Box

Fishfinders/GPS Chartplotters



Fantastic HDS Features

- Built-in Broadband Sounder
- Internal 16-channel GPS+WAAS Antenna
- New, Brighter SolarMAX™ PLUS Display
- Built-in High-Definition Insight Mapping Options
- Largest Selection of Chartcard Options Including Navionics® Platinum+ with TurboView™

NEW HDS-10 Fishfinder/GPS Chartplotter

The finest of new Lowrance fishfinding and GPS navigation technologies with massive, high-definition 10.4"/26.4 cm Super VGA color viewing. The new, brighter SolarMAX™ PLUS display renders brilliant detail in sunlight with the best wide-angle viewing available, while advanced pure-white LED screen/keypad backlighting fully adjusts to zero-dim for night viewing. The unique new FlyWheel™ dial and command soft keys give you easier and quicker control of Broadband Sounder fishfinding and satellite navigation precision via the built-in 16-channel GPS+WAAS antenna. HDS built-in cartography choices include Enhanced U.S. Basemap, or the amazing, life-like and new Insight USA™ with combined Inland and Coastal coverage. Plus, HDS is fully compatible with all Navionics® chartcards, including Platinum+, Platinum, Platinum HotMaps, with two high-speed SD card slots. Fully ready to build your complete stand-alone or networked onboard system.



Model	Part
HDS-10	
U.S. Basemap, no transducer	140-40
U.S. Basemap, with 83/200 kHz transducer	140-00
Insight USA™, no transducer	140-41
Insight USA™, with 83/200 kHz transducer	140-13
Insight USA™, with 50/200 kHz transducer	140-02

Build Your Own System Options	Page
LWX-1 SIRIUS® Weather/Radio	30
NMEA 2000® & Fuel Management	28
HD Digital Radar	18
Transducers, up to 1 kW	34
Ethernets	31
VHF Marine DSC radios	24

- SIRIUS® Satellite Weather and Stereo-Quality Radio Capability
- Ethernet and NMEA 2000® Performance Networking Options
- Expanded New 2-Year Warranty



NEW HDS-8 Fishfinder/GPS Chartplotter

An easy fit with an easy-to-see large display, this HDS delivers high-definition, Super VGA color brilliance and clarity in an award-winning, right-sized 8.4"/21.3 cm display package. Plus, it offers all the same advanced Lowrance HDS sounder and navigation technologies and features of the HDS-10, while it is likewise fully ready to build a complete onboard system.



Model	Part
HDS-8	
U.S. Basemap, no transducer	140-38
U.S. Basemap, with 83/200 kHz transducer	140-09
Insight USA™, no transducer	140-39
Insight USA™, with 83/200 kHz transducer	140-07
Insight USA™, with 50/200 kHz transducer	140-06

Build Your Own System Options	Page
LWX-1 SIRIUS® Weather/Radio	30
NMEA 2000® & Fuel Management	28
HD Digital Radar	18
Transducers, up to 1 kW	34
Ethernetworks	31
VHF Marine DSC radios	24

The Most Revolutionary Finders Since The Little Green Box

Fishfinders/GPS Chartplotters



Fantastic HDS Features

- Built-in Broadband Sounder
- Internal 16-channel GPS+WAAS Antenna
- Brilliant, New SolarMAX™ PLUS Display
- Built-in High-Definition Insight Mapping Options
- Largest Selection of Chartcard Options Including Navionics® Platinum+ with TurboView™

NEW HDS-7 Fishfinder/GPS Chartplotter

This large-but-compact solution with 6.4"/16.3 cm full VGA color viewing that renders astounding fishfinder and navigation details. It also includes the new, brighter SolarMAX™ PLUS bright-sunlight/wide-angle display with pure-white LED screen/keypad backlighting that fully adjusts to zero-dim for night vision. HDS-7 also includes the same for the built-in Broadband high-definition fishfinder technology and the high-sensitivity 16-channel GPS+WAAS antenna. HDS built-in cartography choices include Enhanced U.S. Basemap, or the amazing, life-like and new Insight USA™ with combined Inland and Coastal coverage. Fully compatible with all Navionics® chartcards, including Platinum+, Platinum, Platinum HotMaps, with one high-speed SD card slot. Fully ready to build your complete stand-alone or networked onboard system.



Model	Part
HDS-7	
U.S. Basemap, no transducer	140-34
U.S. Basemap, with 83/200 kHz transducer	140-05
Insight USA™, no transducer	140-36
Insight USA™, with 83/200 kHz transducer	140-12
Insight USA™, with 50/200 kHz transducer	140-14

Build Your Own System Options	Page
LWX-1 SIRIUS® Weather/Radio	30
NMEA 2000® & Fuel Management	28
HD Digital Radar	18
Transducers, up to 1 kW	34
Ethernetworks	31
VHF Marine DSC radios	24

- SIRIUS® Satellite Weather and Stereo-Quality Radio Capability
- Ethernet networks and NMEA 2000® Performance Networking Options
- Expanded New 2-Year Warranty



NEW HDS-5 Fishfinder/GPS Chartplotter

Presenting big-color definition and multifunction performance in a popular space-saving design. Viewing performance is exceptionally enhanced with its exclusive, high-resolution 5" / 12.7 cm 256-color SolarMAX™ PLUS daylight display with adjustable screen and keypad backlighting. Of course, Broadband high-definition sonar and ultra-precision 16-channel GPS+WAAS antenna are inside. Along with fantastic built-in lake mapping of the Enhanced U.S. Basemap, you also get a choice of incredible, built-in high-definition Lowrance Insight cartography with your model selection: Lake Insight™ for U.S. inland and Great Lakes; and Nautic Insight™ coverage for detailed U.S. coastal waters coverage. The HDS-5 also uses all Navionics® chartcards, including Platinum+, Platinum, Platinum HotMaps, with one high-speed SD card slot. Like all HDS models, it's ready to build your complete stand-alone or networked onboard system.



Model	Part
HDS-5	
U.S. Basemap, no transducer	140-32
U.S. Basemap, with 83/200 kHz transducer	140-21
Lake Insight™, no transducer	140-30
Lake Insight™, with 83/200 kHz transducer	140-19
Nautic Insight™, no transducer	140-31
Nautic Insight™, with 50/200 kHz transducer	140-20

Build Your Own System Options	Page
LWX-1 SIRIUS® Weather/Radio	30
NMEA 2000® & Fuel Management	28
HD Digital Radar	18
Transducers, up to 1 kW	34
Ethernetworks	31
VHF Marine DSC radios	24

The Most Revolutionary Finders Since The Little Green Box

Multifunction Fishfinder

HDS Fishfinder Features

- Built-in Broadband Sounder
- Brilliant, New SolarMAX™ PLUS Display
- Ethernet and NMEA 2000® Performance Networking Options
- Expanded New 2-Year Warranty



NEW HDS-5x

The legendary Lowrance X-series lives on in this next-generation advancement in fishfinding for the serious and professional angler. Its exceptionally enhanced features and performance are precisely revealed on high-definition 5"/12.7 cm 256-color SolarMAX™ PLUS display with adjustable screen and keypad backlighting. Best of all, Lowrance Broadband Sounder is now built in. So you can find more fish with greater sensitivity, higher definition, more display clarity, much less clutter and the best separation of fish from cover ever achieved by Lowrance.

Plus, you can quickly and easily save waypoints using the HDS-5x when networked with any HDS chartplotter or multifunction unit.

Model	Part
HDS-5x	
With 83/200 kHz transducer	140-27
With 50/200 kHz transducer	140-28
No transducer	140-29
Optional Accessories	
Transducers, up to 1 kW	34
NMEA 2000® & Fuel Management	28
Ethernetworks	31
VHF Marine DSC radios	24



The Most Revolutionary Finders Since The Little Green Box

GPS Chartplotters



HDS Chartplotter Features

- Internal 16-channel GPS+WAAS Antenna
- New, Brighter SolarMAX™ PLUS Display
- Built-in High-Definition Insight Mapping
- Largest Selection of Chartcard Options Including Navionics® Platinum+ with TurboView™

NEW HDS-10m Multifunction GPS Chartplotter

Lowrance presents a new dimension in multifunction chartplotters with large-scale, high-definition 10.4"/26.4 cm Super VGA color viewing. The new SolarMAX™ PLUS display renders brilliant detail in sunlight with the best wide-angle viewing available, with advanced pure-white LED screen/keypad backlighting. A unique new FlyWheel™ dial and command soft keys give you control with the greatest of ease and speed, and to precisely guide your way, a new super-sensitive 16-channel GPS+WAAS antenna is built right in. Also inside is the amazing, life-like and exclusive Insight USA™ cartography to enhance your on-water navigation for both Inland lakes and Coastal waters. Plus, this HDS is now fully compatible with all Navionics® chartcards, including Platinum+, Platinum, Platinum HotMaps, with two high-speed SD card slots.

Model	Part
HDS-10m with Insight USA™	140-15

Build Your Own System Options	Page
LWX-1 SIRIUS® Weather/Radio	30
NMEA 2000® & Fuel Management	28
HD Digital Radar	18
Ethernetworks	31
VHF Marine DSC radios	24

Advanced Networking & Expandability on All HDS Chartplotters

For building an onboard system, HDS provides truly advanced definition in multi-tasking compatibilities.

- SIRIUS® real-time weather, plus unique Inland and Offshore SIRIUS® subscription choices
- High-Definition HD Digital Radar with chart overlay
- Ethernetworks high-speed network sharing of sonar, weather and radar
- NMEA 2000® connectivity for single- or multi-station boat and engine systems monitoring
- Fishfinder graphs with full functions control when networked with any HDS sounder

- SIRIUS® Satellite Weather and Stereo-Quality Radio Capability
- Ethernet and NMEA 2000® Performance Networking Options, including Broadband Sounder
- Expanded New 2-Year Warranty



NEW HDS-8m Multifunction GPS Chartplotter

All the same features of the HDS-10 in an award-winning, right-sized package, featuring high-definition, Super VGA color brilliance and clarity in a 8.4"/21.3 cm SolarMAX™ PLUS display.

NEW HDS-7m Multifunction GPS Chartplotter

Enjoy big performance and color detail in this large-but-compact system with a 6.4"/16.3 cm full VGA color display, with the sunlight and wide-angle viewability of the new SolarMAX™ PLUS screen technologies. With rocker arrow keys and single keypad and SD card slot.



Model	Part
HDS-8m with Insight USA™	140-17
HDS-7m with Insight USA™	140-16

Build Your Own System Options	Page
LWX-1 SIRIUS® Weather/Radio	30
NMEA 2000® & Fuel Management	28
HD Digital Radar	18
Ethernetworks	31
VHF Marine DSC radios	24



GPS Chartplotters



HDS-5m Chartplotter Features

- Internal 16-channel GPS+WAAS Antenna
- Brilliant, New SolarMAX™ PLUS Display
- Built-in High-Definition Insight Mapping
- Largest Selection of Chartcard Options Including Navionics® Platinum+ with TurboView™
- SIRIUS® Satellite Weather and Stereo-Quality Radio Capability
- Ethernet and NMEA 2000® Performance Networking Options, including Broadband Sounder
- Expanded New 2-Year Warranty

NEW HDS-5m Multifunction GPS Chartplotter

This excellent space-saving choice in the new HDS line of performance multifunction chartplotters is the ideal choice for installation on smaller boats. Its exclusive, high-resolution 5"/12.7 cm 256-color SolarMAX™ PLUS display with adjustable backlighting makes it a viewing wonder, day or night. To precisely find your way, a new high-sensitivity 16-channel GPS+WAAS antenna is built-in. The amazing new Nautic Insight™ cartography, with life-like views of underwater topography, is also built in to enhance boating on U.S. coastal waters. Plus, this HDS is now fully compatible with all Navionics® chartcards – Platinum+, Platinum, Platinum HotMaps – with one high-speed SD card slot.

Model	Part
HDS-5m with Nautic Insight™	140-23

Build Your Own System Options	Page
LWX-1 SIRIUS® Weather/Radio	30
NMEA 2000® & Fuel Management	28
HD Digital Radar	18
Ethernetworks	31
VHF Marine DSC radios	24

Advanced Networking & Expandability on All HDS Chartplotters

For building an onboard system, HDS provides truly advanced definition in multi-tasking compatibilities.

- SIRIUS® real time weather, plus unique Inland and Offshore SIRIUS® subscription choices
- High Definition HD Digital Radar with chart overlay
- Ethernet high-speed network sharing of sonar, weather and radar
- NMEA 2000® connectivity for single- or multi-station boat and engine systems monitoring
- Fishfinder graphs with full functions control when networked with any HDS sounder

HDS-5 Baja Chartplotter Features

- Internal 16-channel GPS+WAAS Antenna
- Brilliant, New SolarMAX™ PLUS Display
- Built-in Enhanced U.S. Basemap
- Largest Selection of Chartcard Options
- Ethernetworks and NMEA 2000® Performance Networking Options
- Expanded New 2-Year Warranty



NEW HDS-5 Baja Off-Road GPS Chartplotter

This specially-ruggedized edition makes a perfect fit for tighter, off-highway vehicle interiors. Compatible with the new LGC-4000 external GPS antenna and high-detail Lowrance FreedomMaps™ EX topo mapping options.

Model	Part
HDS-5m with U.S. Basemap	140-26
LGC-4000 Baja external GPS+WAAS antenna	125-31

Build Your Own System Options	Page
LWX-1 SIRIUS® Weather/Radio	30
NMEA 2000® & Fuel Management	28
Ethernetworks	31
FreedomMaps™	41



High-Definition Digital Radar

Advanced Lowrance digital signal processing in high-definition radome choices for HDS. Fast, detailed radar detection of even small and distant targets with superb accuracy in dark, fog and rain alike. Compact, dependable and high-performance, both network with Ethernet networks for onboard radar display sharing.

Digital Radome Features

Radar/Chart Overlay.

Interfaces charts and radar detail in a single, detail-rich display when coupled with an optional, compatible NMEA 2000® heading sensor.

Clearest Viewing.

Automatic Tune, Gain and Sea Clutter adjustment.

Smart STC.

Digital Sensitivity Time Control curves reject clutter with setting of return strength/distance thresholds.

Color Recognition.

Color palette choices for improved target distinction based on viewing conditions.



LRA-1800



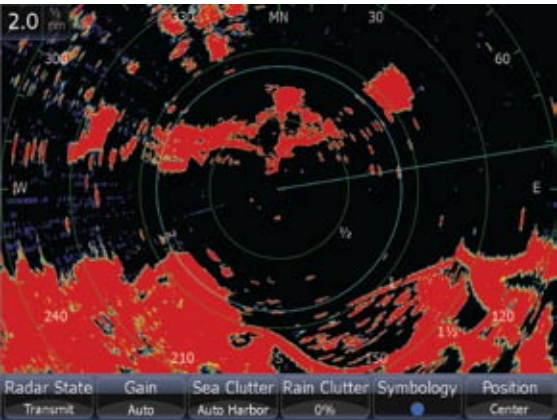
LRA-2400

LRA-1800 Radome

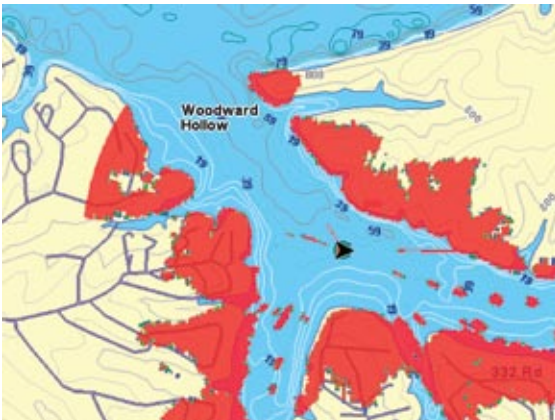
- 2 kW, 18"/46 cm scanner w/2 kW processor
- 5.2° horizontal beamwidth, 25° vertical beamwidth
- Up to 24 nm range

NEW LRA-2400 Radome

- 4 kW, 24"/61 cm scanner w/2 kW processor
- 4° horizontal beamwidth, 25° vertical beamwidth
- Up to 48 nm range



HDS high-definition radar display.



Radar chart overlay display.

Simrad NMEA 2000® heading sensor options to activate radar/chart overlay display.	
FC40 Fluxgate Compass, includes 5M SimNet NMEA 2000® cable	22090187
FC42 Rate Gyro Fluxgate Compass, includes 5M SimNet NMEA 2000® cable	22090195
Required for both compasses above:	
SimNet NMEA 2000® cable to Micro-C male	24005729
Yellow SimNet Joiner without Terminator	44172260
Lowrance N2K-T-RD NMEA 2000® T-connector	119-79

Model	Part
LRA-1800 for HDS	102-38
LRA-2400 for HDS	102-39

Radar range depends on fog, rain and other atmospheric conditions.



Legendary Fishfinders

Find fish like a pro when you have a real performance edge with these legendary Lowrance fishfinders.

Packed with Exclusive and Legendary Lowrance Fish-Finding Features:

- Astounding LCD screen visibility in the brightest sunlight with monochrome FSTN and daylight color TFT displays
- Super-sensitivity receiver design enhances fish target acquisition and separation
- High-speed 200kHz Skimmer® transducer with built-in temp sensor and up to 60° of wide-scan fish detection
- GRAYLINE® or COLORLINE™ feature vastly improves target definition and defines bottom composition
- FishReveal™ enhanced display feature exposes fish targets hidden in cover and clutter (monochrome models)
- Adjustable Ping Speed with HyperScroll™ for high-speed sounding
- FlashGraf™ combines scrolling sonar graph with LCD flasher for two ways of finding fish in one screen display
- FasTrack™ vertical bar flasher feature shows real-time returns and strength of echos
- ASP™ Advanced Signal Processing features automatic sensitivity adjustments for the best, clutter-free picture possible
- Full one-year warranty

Color Compacts

X67c Fishfinder with New, Brighter Color Viewing

Enjoy dazzling 256-color fishfinder performance with incredible visibility in sunlight, now enhanced with a brighter screen, at an attractive price!

- New 3.5"/8.9 cm diag. 320Vx240H pixel, active matrix TFT display for exceptional sonar detail is now even more visible in sunlight
- White LED backlit screen and keypad
- 800W peak-to-peak power/100W RMS, depths to 600'/183 m



M68c s/MAP with New, Brighter Color Viewing

A favorite for smaller spaces, packed with Lowrance precision color fishfinding and GPS navigation features – now with a newly enhanced brighter screen – packed in compact performance package.

- New 3.5"/8.9 cm diag. 320Vx240H pixel, active matrix TFT display for exceptional sonar detail is now even more visible in sunlight
- White LED backlit screen and keypad
- 800W peak-to-peak power/100W RMS, depths to 600'/183 m
- Precision GPS+WAAS receiver with internal antenna
- Built-in Lowrance cartography of U.S. lakes, rivers and coastal waters with nav aids, plus major highways/cities
- Saves up to 1,000 waypoints to mark fish spots with a choice of 42 icons
- Saves up to 100 retraceable plot trails



M68c s/MAP Map Deep Water

Features special Skimmer® deep water transducer with temp sensor for deeper salt water or downrigger tracking to depths of 800'/244 m.

Network with NMEA 2000®



X135 200 kHz Fishfinder

The most popular and powerful, high-resolution Lowrance grayscale fishfinder ever!

- High-detail 5 1/2" x 12.7 cm diag. Film SuperTwist display with 16-level grayscale definition and sharp 480x480 pixel resolution is perfectly sunlight-readable
- Advanced white LED backlit screen and keypad
- 4,000W peak-to-peak power/500W RMS, depths to 1,000/305 m
- NMEA 2000® network connectivity

X136 50/200 kHz Fishfinder

The dual-frequency coastal/Great Lakes model of the X135 for deeper salt water or downrigger tracking.

- High-detail 5 1/2" x 12.7 cm diag. Film SuperTwist display with 16-level grayscale definition and sharp 480x480 pixel resolution is perfectly sunlight-readable
- Advanced white LED backlit screen and keypad
- 4,000W peak-to-peak power/500W RMS, depths to 2,500/762 m @ 50 kHz
- High-speed dual-frequency 50/200kHz Skimmer® transducer with built-in temp sensor
- Speed/distance sensor aids in precision trolling
- NMEA 2000® network connectivity

Grayline® (Colorline™ on color models) helps separate fish and important structure from the actual bottom. Also, the width of the lighter band distinguishes between hard and soft bottoms.



X52 200 kHz Fishfinder

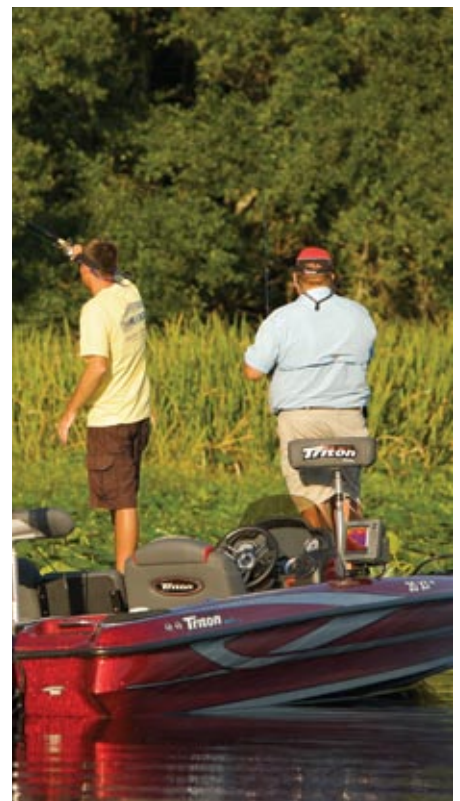
A perennial best-buy favorite in a true fishfinder performer that's nicely sized and nicely priced to match.

- High-contrast 4" x 10.2 cm diag. Film SuperTwist display has 16-level grayscale definition with 240Vx160H pixel resolution and superior viewing in direct sunlight
- Backlit screen and keypad
- 1,500W peak-to-peak power/188W RMS, depths to 800/274 m
- NMEA 2000® network connectivity

X59 50/200 kHz Fishfinder

The dual-frequency coastal model of the X52 for deeper salt water or downrigger tracking.

- High-contrast 4" x 10.2 cm diag. Film SuperTwist display has 16-level grayscale definition with 240Vx160H pixel resolution and superior viewing in direct sunlight
- Backlit screen and keypad
- 2,400W peak-to-peak power/300W RMS, depths to 1,500/457 m @ 50 kHz
- High-speed dual-frequency 50/200 kHz Skimmer® transducer with built-in temp sensor
- NMEA 2000® network connectivity



Legendary Fishfinders

Monochrome Marvels



X125 200 kHz Fishfinder

Uncompromising Lowrance features in a performance package for fishing success.

- High-detail 5" / 12.7 cm diag. Film SuperTwist display with 16-level grayscale definition and sharp 480x480 pixel resolution is perfectly sunlight-readable
- Amber LED backlit screen and keypad
- 2,400W peak-to-peak power/300W RMS, depths to 900'/274 m



X96 200 kHz Fishfinder

The popular champion-grade choice with fullsize picture and sonar performance features at a fantastic price.

- High-contrast 5" / 12.7 cm diag. Film SuperTwist display has 16-level grayscale definition with 320x320 pixel resolution and superior viewing in direct sunlight
- Incandescent backlit screen and keypad
- 1,500W peak-to-peak power/188W RMS, depths to 800'/244 m



X50 DS 83/200 kHz Fishfinder

A versatile and innovative fishfinder with dual-search 83/200 kHz sounding for excellent shallow and deep water fish target marking.

- Dual-search Skimmer® transducer with built-in temp sensor and up to 120° of wide-coverage fish detection at 83 kHz
- High-contrast 4" / 10.2 cm diag. Film SuperTwist display with 4-level grayscale, 240Vx160H pixel resolution and superior viewing in direct sunlight
- Screen backlighting
- 1,500W peak-to-peak/188W RMS depths to 1,000'/305 m

Model	Part
X67c	110-50
X67c without transducer	110-51
M68c s/MAP	116-03
M68c s/MAP without transducer	116-05
M68c s/MAP Deep Water	116-07
X50 DS	110-68
X52	110-61
X59 DF	110-63
X96	110-76
X125	117-07
X135	117-01
X135 without transducer	117-13
X136 DF	117-02

Accessories

Visit www.lei-extras.com to view accessories for these Lowrance models.

IceMachine™ Portable

Self-contained and ready-to-go ice fishing anytime, this IceMachine™ fully portable color fishfinder is exceptional for ice-fishing success. Plus, with added options for go-anywhere fishfinding off the ice.

X67c IceMachine™ Fishfinder with New, Brighter Color Viewing

Superb 256-color fishfinder performance with incredible visibility in sunlight, now enhanced with a brighter screen, that won't fade or slow down even in temperatures down to -20°F (-29°C).

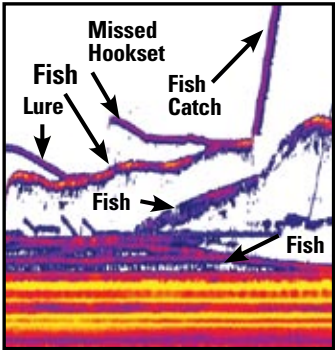
- New 3.5"/8.9 cm diag. 320Vx240H pixel, 256-color active matrix TFT display for exceptional sonar detail is now even more visible in sunlight
- White LED backlit screen and keypad
- 800W peak-to-peak power/100W RMS, depths to 600'/183 m
- High-sensitivity receiver design enhances fish target marking and separation
- Selectable display modes – scrolling sonar graph or color LCD flasher with battery status
- COLORLINE™ in all sonar modes vastly improves target definition and defines bottom composition
- ASP™ Advanced Signal Processing automatically adjusts sensitivity for the best, clutter-free picture possible
- Includes rugged waterproof soft case, 12 vDC/7 amp sealed battery with charger, adjustable transducer outrigger bracket and weighted 200 kHz bullet ice transducer
- Optional boat mounting and portability accessories

PPP Porta-Power Pack Options

Here's a convenient way to take the Lowrance head unit off your boat and go ice fishing with this portable accessory pack. Includes custom waterproof soft case, battery, charger, special bullet ice transducer and outrigger bracket for adjustable transducer depth. Two choices fit 5" Lowrance finders and smaller, including HDS-5 models.

Portable Skimmer® Transducer

A perfect addition to your Porta-Power Pack, the patented Skimmer® 200 kHz transducer with water temp sensor is paired with a sturdy suction cup mount for ultimate go-fishing-anywhere portability.



Incredible stationary ice-fishing detail using scrolling graph mode.

Optional Accessories		
PPP-16i Porta-Power Pack for 5" HDS models		016-46
PPP-15i Porta-Power Pack for M68c s/MAP		016-45
PTT-WSBL Portable Skimmer® transducer for 5" Lowrance finders		106-76
PTT-WSU Portable Skimmer® transducer for M68c		106-55

Model	Part
X67c IceMachine™	110-542

VHF Marine Radios

For safety's sake, get in touch with the unbeatable quality, features, price and especially, the dependability of Lowrance VHF marine communications.

LVR-880



LVR-880 DSC VHF+FM Fixed-Mount Marine Radio

The first with an FM and NMEA® 2000 interface for Track-Your-Buddy®. Plus other premium features in an exceptional 25W/1W DSC marine radio.

Select Features

- VHF plus stereo FM radio receiver with powerful dual audio amps
- Dual NMEA 0183 and NMEA 2000® DSC integration
- Exclusive "Track-Your-Buddy" feature connects DSC hi-res position polling to Lowrance NMEA 0183 and NMEA 2000® chartplotters to show the location of up to three boating friends on the GPS chart display
- GREAT CIRCLE NAVIGATION to WAYPOINT with data transfer capability to chartplotters
- 200 waypoints with up to six character alpha/numeric naming
- Full Class D or SC-101 automatic distress operation transmits/receives hi-res vessel position and group calls via NMEA 0183/ NMEA 2000® output to chartplotters
- Channel naming
- Dual weather alert systems provide S.A.M.E. for county-to-county monitoring and standard NOAA Wx 1050Hz tone alert
- Immediate GPS boat position and time when connected to a compatible GPS chartplotter
- Simplified intercom with talkback plus built-in 22W hailer-horn
- Extra-large and bright custom full-matrix FSTN screen with lat/lon position display without scrolling
- Large 2.24" (57 mm) speaker for great audio output when running at high speed
- Six tactile microphone keys with WX key, powerful speaker and easy left- or right-handed control
- Rotary Channel control with press-to-enter
- Three favorite channel mode with scan
- Instant "GO" and MOB key
- 3W external speaker jack
- Case and microphone fully waterproof (JIS 7 submersible)
- All available USA, Canadian, International and 10 weather marine channels with channel naming (country specific)
- Flush mount kit and dust cover included

What's Track-Your-Buddy?

This special function is for safety, teamwork, convenience, and even just for fun.

It's a great feature that allows you to connect your VHF DSC position polling with chartplotter to show the location of up to three boating friends on the chart display.

It's also easy to set up: You need a Lowrance LVR-880 fixed mount (or LHR-80 handheld) VHF, the MMSI number of your buddies' VHF DSC radios and a Lowrance HDS GPS chartplotter. Your VHF will regularly poll your buddies' positions and the chartplotter will regularly update their locations by MMSI number on your screen.

Track-Your-Buddy is a truly great aid in locational awareness of your friends in a group boating excursion.

Model	Part
LVR-880	022-20

Optional Accessories

LVR-880

VA-1 3 7/9 m stainless steel VHF antenna	022-25
VA-2 8 1/2.4 m fiberglass VHF antenna	022-26
VA-1LB Antenna mounting bracket	124-48
VA-MTG-Nylon quick-fit antenna mount	124-49
VA-MTG-SS Stainless steel quick-fit antenna mount	124-50

LVR-250



LVR-250 DSC VHF Fixed-Mount Marine Radio

Solid reliability and attractive features without the high price in a high-quality 25W/1W fixed-mount VHF marine radio with DSC.

Select Features

- Full DSC Class D/SC-101 automatic distress operation with hi-res position polling and group calling via NMEA 0183 output to chartplotters
- Immediate GPS boat position and time when connected to a compatible GPS chartplotter
- Large, clear FSTN screen with lat/lon position display without scrolling
- Channel naming
- Weather alert
- Six tactile microphone keys with WX key, powerful speaker and easy left- or right-handed control
- Rotary Channel control with press-to-enter
- Super-large 16/9 calling channel key
- Three favorite channel mode with scan
- Local/Distant feature eliminates interference
- Selectable Dual and TriWatch modes
- 3W external speaker and GPS interface jacks
- Case and microphone fully waterproof (JIS 7 submersible)
- All available USA, Canadian, International and 10 weather marine channels with channel naming
- Flush mount kit and dust cover included

What's DSC?

Digital Selective Calling (DSC) provides for instant distress calls and digital messaging, and is a component of the international Global Maritime Distress and Safety System (GMDSS).

When connected with a GPS, the time, precise location and unique ID of the vessel in trouble is automatically broadcast when the DISTRESS button is pressed. So simple, it allows even a non-experienced VHF user to send this continuous distress message with a one-button procedure.

With DSC you can privately hail another DSC-equipped vessel, or shore station, with a known MMSI (Maritime Mobile Service Identity) number. It will also "ring" and notify you that you have a private hail, and automatically switch you to the open channel your caller is waiting on.

You can also send and receive messages digitally with DSC -- between one selected vessel, a group of vessels or ship-to-shore -- by dialing-in the MMSI number(s).

It's also the position polling feature of DSC that allows you to keep chartplotter track of your friends' locations who have VHF DSC with the unique Lowrance Track-Your-Buddy feature.

Model	Part
LVR-250	022-19

Optional Accessories

LVR-250

VA-1 3 7/9 m stainless steel VHF antenna	022-25
VA-2 8 7/2.4 m fiberglass VHF antenna	022-26
VA-1LB Antenna mounting bracket	124-48
VA-MTG-Nylon quick-fit antenna mount	124-49
VA-MTG-SS Stainless steel quick-fit antenna mount	124-50

VHF Marine Radios

NEW LHR-80 VHF/GPS Handheld Marine Radio

Advanced and affordable 5/1W waterproof VHF handheld features DSC, built-in 12-channel GPS receiver, trackplotter, Great Circle navigation, and more. Plus it floats!

Select Highlights

- Floatable and totally JIS-7 waterproof
- Huge 128x128 pixel bit-mapped LCD backlit display for maximized viewing
- Built-in 12-channel GPS receiver with lat/lon output, trackplotter display, local waypoint icons and cursor control
- Great Circle navigation display with 500 waypoints as well as MOB
- Full SC-101 DSC distress calling operation
- Long-life (up to 8+ hours), high-capacity 1400mAh Li-Ion battery with rapid charger
- Unique Track-Your-Buddy and Get-Buddy features to locate vessels using position polling
- Flexible Dual and TriWatch channel monitoring

Radio Detail

- All International, Canada and USA channels with 10 Weather channels
- Selectable 5/1W transmit power
- NMEA 0183 output while on cradle
- Volume, Channel and SQL Control with Up/Down
- Navigation Waypoint-Setting and GOTO route creation
- Normal and Priority Scan
- Memory Channel Scan
- PLL Controlled Circuitry
- Channel 16/9 plus Distress Call Button with hinged door
- Illuminated Function Keys
- Keylock
- Power Saving Circuitry
- Battery indicator with 1-4 bars
- RTCM SC-101 compliance
- SMA antenna connector
- Power Source: 7.4 vDC (7.4V 1400mAh Li-Ion battery pack)
- Battery Life:
 - 8 Hours (5W Power on 5%:5%:90% ratio, GPS on)
 - 9 Hours (5W Power on 5%:5%:90% ratio, GPS off)
- Dimensions:
 - 2.7"W x 5.6"H x 1.6"D (68 x 141 x 40 mm)
- Display Size: 1"W x 1.6"H (25.5 x 40.4 mm)
- Weight: 11.6 oz. (330 g)

Includes

- Radio with 1400mAh Li-Ion battery pack
- Rubber Duck Antenna
- Desk Top Charging Cradle
- 120V AC Wall Adapter for Desk Top Cradle
- Wrist strap
- Belt clip
- Operation Manual

Model	Part
LHR-80	022-17



LHR-80



LHR-20 and LHR-22 Handheld Marine VHF Radios

These handy, full-featured waterproof 5W/1W VHF handheld radios include Li-Ion power for the best-in-class battery life, plus the LHR-22 sports the newest camo pattern from REALTREE®.

Shared Select Features

- Includes Li-Ion battery pack and charger
- Totally waterproof to strict JIS 7 submersible standards
- All USA, Canadian and International channels
- Selectable 5W/1W transmit power
- High-bright red LED TX indicator confirms transmissions
- RX/TX signal strength meter
- Memory indicator plus 4-bar battery life gauge
- Power Saver Circuitry automatically switches to battery saver after 10-second TX lapse
- Receive Signal Strength Indicator (RSSI) displays strength of incoming/outgoing signals
- NOAA Wx 1050Hz tone alert for weather/storm warnings
- Extended battery life:
 - 10 hours (5 w on 5-5-90% ratio)
 - 13 hours (1 w on 5-5-90 ratio)

LHR-20 Includes

- Radio with 1600 mAh Li-Ion battery pack
- Rubber Duck antenna
- Desktop charger with 2-color LED indicator and wall adapter
- AC to DC wall charger
- Wrist strap and belt clip

LHR-22 Includes

- Same as LHR-20, plus REALTREE® ADVANTAGE MAX-4 HD® camo case and spare camo alkaline battery tray.

Model	Part
LHR-20	022-15
LHR-22	022-16

Optional Accessories

LHR-20 and -22

VBP-2 1600mAh Li-Ion battery pack, cradle and adapter	016-51
VHT-2 Alkaline battery tray – LHR-20 (batteries not included)	016-48
VHT-3 Alkaline battery tray – LHR-22 (batteries not included)	016-49
CA-14 12 vDC accessory plug power cable	127-38
PC-29 Power cable	127-40



LHR-20



LHR-22

Networking & Digital Gauges

Lowrance NMEA 2000® Networking

Lowrance offers a full array of non-proprietary antennae, gauges and sensors for NMEA 2000® networking and onboard systems monitoring. Only Lowrance offers the most choices, the most complete/configurable user interface for devices monitoring, and waypoint/sonar depth sharing on the network.



LGC-4000

NEW LGC-4000 GPS Receiver Antenna

A mighty new 16-channel NMEA 2000® GPS+WAAS antenna scores high in superior sensitivity for signal acquisition, with incredible position accuracy, in a new compact size that's easier to flush-mount.

- Works with any NMEA 2000® network for enhanced location accuracy and improved satellite-signal fix with reduced wandering
- Advanced performance for Lowrance HDS models with a true update rate of 5 times per second for the most accurate speed-over-ground readings
- New, compact 3 7/8" diameter module is just 1 3/8" high and offers top mounting ease
- Rugged for all marine environments and fully waterproof
- Spat cone for pole mounting

LMF Multi-Function Gauges

Lowrance LMF models are NMEA 2000® certified digital gauges providing precision and versatility for real-time monitoring of engine and boat systems on the NMEA 2000® network. Plus, they're backed by the most extensive and affordable selection of smart sensors, including Fuel Flow for optimum fuel management economies.

- Allows building of custom screens with up to four different data readings in choice of analog-style graphics or alpha/numeric styles
- Shows data from engines and other sensors on 13 customizable screen types
- Displays up to 16 pages with choice of static or manual and timer screen rotation
- Features standard or metric fuel economy readings when used in conjunction with EP-60R Fuel Flow sensor and speed sensor: EP70R Speed, EP90R Pressure or networked GPS antenna



LMF-400

- 2.5"/6.4 cm 132x132 pixel Film SuperTwist 4-level grayscale display with superb viewing in direct sunlight
- Advanced white LED screen backlighting
- Sealed and waterproof to IPX-7
- Fits standard 3-3/8" (86 mm) dia. hole



LMF-200

- 1.4"/3.6 cm 65x65 pixel Film SuperTwist 4-level grayscale display with superb viewing in direct sunlight
- Advanced white LED screen backlighting
- Sealed and waterproof to IPX-7
- Fits standard 2-1/8" (55 mm) dia. hole

Electronic Probe Sensors

Only Lowrance offers the most NMEA 2000® sensors for vital boat data monitoring, each with a built-in "smart module," that's fully programmable for greater accuracy in data delivery.

EP-60R Fuel Flow

Configurable, for gasoline only, one per engine. Sapphire bearing technology extends life and increases accuracy even at low flow. Outputs Fuel Flow, Fuel Used, Trip Fuel Used and Seasonal Fuel Used data to the network for fuel management. NMEA 2000® certified.

EP-65R Fluid Level

Compatible with standard U.S. and European sending units and a range of fluids: fuel; fresh, waste or black water; live well; and oil. Allows calibration for more accurate fluid level readings for boats with odd-shaped tanks. NMEA 2000® certified.

EP-70R Speed

Paddle wheel for speed and distance display; NMEA 2000® certified.

EP-80R Temperature

Configurable sensor for surface water, livewell, baitwell, cabin and engine room temp readings, -20°C to 80°C (-4° to 176°F). NMEA 2000® certified.

EP-80R TH Temperature

Configurable surface water temp sensor for thru-hull installation. NMEA 2000® certified.

EP-85R Storage Device

Accumulates and stores real-time engine data of fuel flow messages for up to three engines connected to a NMEA 2000® network for fuel range calculations and display. NMEA 2000® certification pending.

EP-90R Pressure

Outputs pitot speed or engine pressure readings – boost, coolant, fuel, engine or transmission oil. 100 psi max. NMEA 2000® certification pending.

Engine Interface Sensors

Cabled sensors for top outboard brands connects engines to NMEA 2000® networks to display engine data.

Yamaha (late model)

Suzuki (DF Series)

Evinrude (E-TEC)

NMEA 2000® Network Starter Kit

Here's how to easily start your own NMEA 2000® onboard network, allowing future expansion to add sensors and displays. NMEA 2000® compliant components include two T-connectors, 2-foot cable, 15-foot cable, two terminating resistors and network power cable.

N2K-EXP-RD-2 124-69



Networking & Digital Gauges

Ethernetworks

Advanced, plug-and-play and high-speed ethernet networking, with a choice of performance module options to take you to the next level of fishing success.



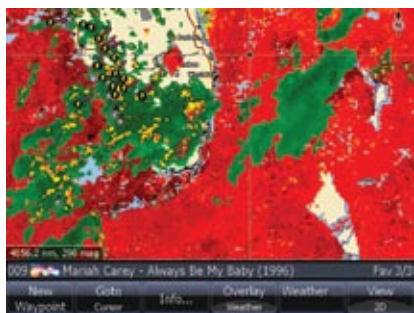
LWX-1



NEW LWX-1 SIRIUS® Satellite Weather/Radio Antenna Module

See the best current and future weather in real-time and in high-resolution on the HDS display. Enjoy sports and music in high quality digital stereo. All in a complete, surprisingly and affordable smart antenna module package.

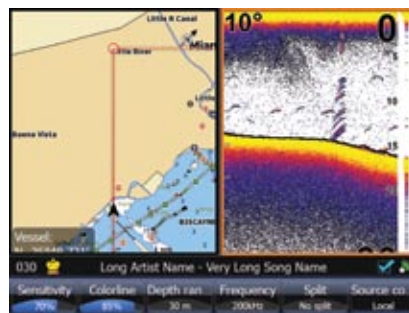
- Compatible with all HDS chartplotter-equipped models via ethernet for weather display with complete control
- Attractive, compact and weatherproof antenna design for easy flush-mounting to boat deck, with pedestal- or pole-mounting versatility
- Plug-and-play ethernet connection outputs weather to one or more HDS displays, with 3.5 mm stereo audio jack interfaces to onboard sound system
- Internal memory saves last weather/environmental data up to 30 minutes during power interruption or power off during refueling
- Exclusive new SIRIUS® U.S. Inland or Coastal boating subscription choices for HDS users
- Current and historical NOWRad® animated weather radar data, including lightning, overlays charts in high-detail, including all optional Navionics® choices
- Latest weather forecasting with five-day tabular weather feed for major U.S. cities
- Custom, economical SIRIUS® Inland weather subscription includes weather radar, lightning, and storm attributes coverage up to 160 miles
- SIRIUS® Coastal weather subscriptions includes the full suite of weather, sea and atmospheric conditions
- SIRIUS® radio subscription offers over 120 crystal-clear channels, including NASCAR, NFL and college football broadcasts



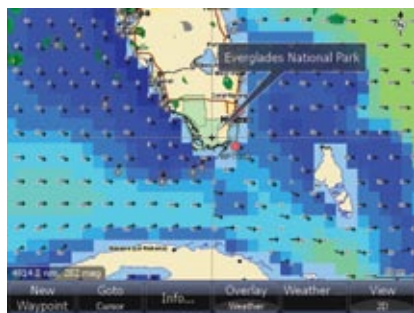
SIRIUS® NOWRad® animated coastal weather radar



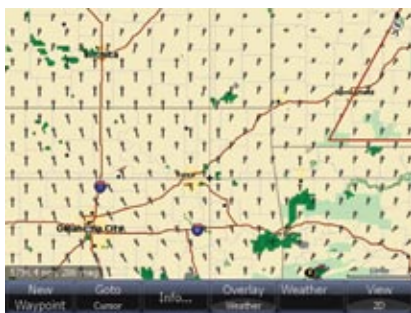
SIRIUS® animated weather radar with wind direction



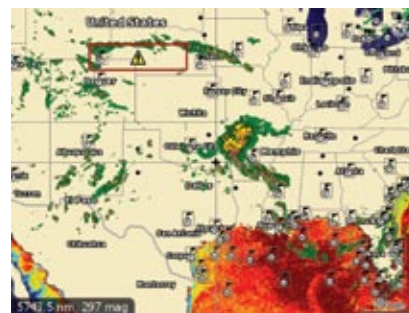
SIRIUS® radio combined with mapping and sonar display



SIRIUS® sea conditions with wave data



SIRIUS® inland weather data with wind direction



SIRIUS® inland radar with weather watchbox



LBS-1 Broadband Sounder Module

Making the best sonar even better, Broadband marks fish targets in, around and through structure, while operating at high speeds in challenging conditions, perfect for sounding shallows to extraordinary depths.

For use with a single unit, or networked with compatible Lowrance models using the NEP-1 Expansion Port, Lowrance Broadband Sounder also converts any compatible chartplotter into a fishfinder/GPS chartplotter combo.

- Phenomenal separation of fish targets from structure, baitfish, thermoclines, clutter and bottom
- Improved underwater fish-holding structure identification; channels, rock piles, stump beds, submerged standing timber, drop-offs and more
- Compatible with all 2007 and later LCX, LMS, X and GlobalMap® Lowrance models
- Connects to any existing Lowrance transducer: Skimmer®, pod, shoot-thru and bolt-thru hull
- Automatic operation at any frequency selected: 50, 83 and 200 kHz
- Tested sounding depths to 5,000' / 1,525 m



NEP-1 Ethernet Expansion Port

A plug-and-play hub for high-speed data-sharing of multiple HDS, LCX, LMS and GlobalMap® products across the onboard network. Waterproof expansion ports resist corrosive marine environments. Unused expansion ports capped for future expansion.

- Robust 100-megabit switch for high-speed data transfer
- Compatible with all Lowrance HDS models, plus 2007 and later LCX, LMS, X and GlobalMap® Lowrance models with yellow 5-pin ethernet connector
- Transmits sonar graphing display/control on GlobalMap® and HDS chartplotters when networked with sonar-equipped Lowrance units
- Rugged and fully waterproof to IPX-7
- Connectivity for up to four compatible head units per expansion module
- Links with other Expansion Port-1 modules for added/future expansion



Networking & Digital Gauges

In-Dash Digital Gauges

LCF-1440 LCD Flasher

Enjoy real-time fishfinder performance with this feature-rich, easy-to-use LCD flasher. Features convenient in-dash fit, crisp glare-free viewing, high-speed operation, solid Lowrance reliability and a great low price.

- 200 kHz Skimmer® transom-mount transducer with built-in temp sensor with up to 60° fish detection coverage
- 800 w peak-to-peak / 100 w RMS; depths to 600' / 183 m
- Auto and manual depth ranges: 10, 20, 40, 80, 160, 320 and 640 feet
- Automatic Advanced Signal Processing (ASP™) operation
- Fits standard 3-3/8" (86 mm) diameter hole



LCF-1440

LST-3800 Digital Depth/Temp

Reliability, accuracy and simplified operation mark this digital depth gauge with water temp readings. Ideal for inland and in-shore coastal boats.

- High-contrast dot matrix display with advanced white LED backlighting
- 200 kHz Skimmer® transom-mount transducer with built-in temp sensor
- Depths to 700' / 213 m
- Shallow and deep depth alarms
- Temp readings to nearest 0.1° F
- Fits standard 2-1/8" (55 mm) diameter hole



LST-3800

LDT-3200 Digital Temp

Precise, sensitive water surface temp digital readings in an attractive, compact case.

- High-contrast dot matrix display with advanced white LED backlighting
- Temp readings to nearest 0.1° F
- Temp sensor included
- Fits standard 2-1/8" (55 mm) diameter hole



LDT-3200

Model	Part
Ethernetworks	
LWX-1 SIRIUS® Satellite Weather/Radio antenna module	022-46
LBS-1 Lowrance Broadband Sounder module	132-00
NEP-1 Navico Ethernet Expansion Port	123-031
ETHEXT-6YL 6-ft Ethernetworks cable	127-51
ETHEXT-15YL 15-ft Ethernetworks cable	127-29
ETHEXT-25YL 25-ft Ethernetworks cable	127-30
ETHEXT-50YL 50-ft Ethernetworks cable	127-28
In-Dash Digitals	
LCF-1440 LCD Flasher gauge	049-471
LST-3800 Digital Depth/Temp gauge	047-94
LDT-3200 Digital Temp gauge	007-28

Model	Part
NMEA 2000®	
N2K-EXP-RD-2 Starter Kit	124-69
LGC-4000 16-channel 5Hz GPS+WAAS antenna	125-28
LGC-4000 Baja 16-channel 5Hz GPS+WAAS antenna	125-31
LMF-400 2.5" multifunction gauge with EP-60R sensor	049-62
LMF-400 1.4" multifunction gauge	049-541
LMF-200 2.5" multifunction gauge with EP-60R sensor	049-611
LMF-200 1.4" multifunction gauge	049-551
EP-60R Fuel Flow sensor	120-39
EP-65R Fluid Level sensor	120-41
EP-70R Speed sensor	120-49
EP-80R Temperature sensor	120-51
EP-80R TH Thru-hull Temperature sensor	120-53
EP-85R Storage Device	120-73
EP-90R Pressure sensor	120-29
Yamaha Engine Interface cable	120-37
Suzuki DF Series Engine Interface cable	120-55
Evinrude E-TEC Engine Interface cable	120-62



Performance Transducers

Lowrance integrates with the widest choice of super-sensitivity transducers to suit your boat, your preference and your expectations for superior performance in fishfinding and bottom sounding, at virtually any depth.

Transom-Mount Skimmer® Transducers

Popular, proven and so much better by design, they're patented. High-speed Skimmer® transom-mount transducers slice smoothly through water without sonar-interfering bubbles. So you enjoy ideal sounding performance and the cleanest sonar readings, even at speeds up to 70 mph/61 kts. Ideal for aluminum- and steel-hull outboard and stern-drive (I/O) boats, each Skimmer® includes a built-in sensor for water temp readings. Plus, the special "kick-up" bracket helps prevent accidental strike damage.



200 kHz Skimmer®

The choice for inland freshwater and in-shore coastal saltwater angling. Built-in temp sensor and up to 120° of wide fish detection coverage with the added 83 kHz operation feature when used with HDS models. Also used for shoot-thru sounding (without temp readings) on fiberglass hulls with proper installation.



200 kHz Skimmer® Portable

For go-anywhere portability, and a handy option for the IceMachine™ portable, with easy-mounting suction cup bracket. Built-in temp sensor and up to same 120° coverage with HDS sounder connection. Not for high-speed use.



50/200 kHz Skimmer®

For deeper salt water or downrigger tracking with built-in temp sensor. Not for shoot-thru-hull use.



Versatile 200 kHz Pod Transducers

Expanded underwater coverage with the versatility of trolling motor mount, or shoot-thru operation on solid fiberglass hulls. Contour curve top and slot for hose clamp simplifies motor-mounting. Available with or without built-in temp sensor, all deliver wider fish detection coverage with high-sensitivity settings.

Visit www.lei-extras.com for transducer options for your Lowrance fishfinder.



Deep-Sounding Transducers

Lowrance also connects with a wide selection of Airmar thru-hull and in-hull transducers made for ultimate deep-sounding performance while reducing or eliminating drag.



P79 In-Hull – 50/200 kHz, 600W RMS

Easily adjusts to hull deadrise angles up to 22° to ensure the beam is correctly oriented for accurate depth readings. The base is bonded to the hull and filled with liquid, and the transducer then attaches to the base with a twist lock. The sound waves travel more efficiently through the liquid, giving the best possible performance.



P319 Thru-Hull – 50/200 kHz, 600W RMS

Features a 50/200 kHz, dual-frequency, single-ceramic element in a low-profile housing. Plastic, bronze or stainless steel models are available to accommodate all hull types with a flush design that minimizes drag.



B164 Thru-Hull – 50/200 kHz, 1kW RMS

Tilted Element™ technology lets you step up to higher 1kW power without a fairing. Flush mounted with less than 6.35 mm (0.25") hull exposure, it can sit on trailer rollers and bunks with no damage at all. Perfect for fast, trailered tournament sport fishing vessels who cannot have a high-performance fairing, the internal tilted ceramic array focuses the perfect vertical beam with maximum energy directly below your boat.



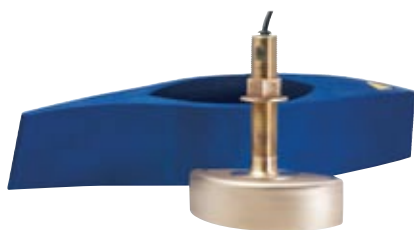
M260 In-Hull – 50/200 kHz, 1kW RMS

A high performance model for 300 W-1 kW echosounders with separate 50 kHz and 200 kHz elements for excellent deep-water performance and exceptional bottom and water column detail. Designed for bow stern or port starboard in-hull mounting, the narrow beam provides crisp image detail especially suited for fishing shelves, intricate bottom structures and wrecks with precise readings even at boat speeds above 20 knots.



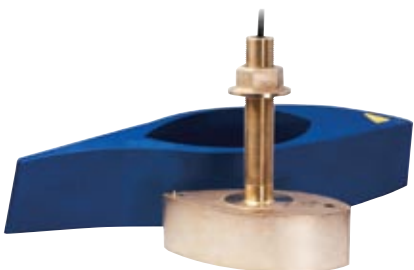
B60 Thru-Hull – 50/200 kHz, 600W RMS

The bronze B60-12° provides a vertical beam without a fairing. An internal ceramic element is tilted to provide built-in deadrise compensation providing excellent echo returns for more accurate depth readings. The nearly flush housing minimizes drag.



B258 Thru-Hull – 50/200 kHz, 1kW RMS

Excellent sportfishing performance for a moderately priced 1 kW transducer. The economical, four-ceramic element design provides deep water sounding with superb target and bottom definition. Airmar's high-performance fairing recommended for the best possible results.



B260 Thru-Hull – 50/200 kHz, 1kW RMS

One of the best high-performing 1 kW bronze thru-hull for 300 W to 1 kW echosounders. Separate 50 kHz and 200 kHz elements for unparalleled deep water performance and unmatched bottom and water column detail. Provides crisp image detail for fishing shelves, intricate bottom structures and wrecks.



B744V Thru-Hull – 50/200 kHz, 600W RMS

Drill only one hole in your boat with this TRIDUCER® multisensor model that features depth, speed, and temperature in a single housing. Single ceramic 50/200 kHz dual frequency element for excellent shallow water detail and deep water bottom tracking. Extended stem length provides extra height for steep deadrise vessels or thick cored hulls.

Outdoor GPS Navigation

XOG™ Crossover Navigator

GPS for Open Road to Open Water to Far Afield

XOG™ is the perfect companion for the outdoor enthusiast who needs guidance on the road with turn-by-turn visual & audio instructions, on the trail using topographic or satellite imagery maps, or on the water with high-detail lake or river navigation maps

Key Features

- Built-in NAVTEQ® background map for street navigation and turn-by-turn voice and visual directions
- Search point-of-interest destinations including gas, hotel, restaurant, airports, campgrounds, hospitals, etc.
- 3.5"/8.9 cm TFT color touch screen with variable backlighting
- Accepts the most mapping options of any GPS including topographic and marine charts
- View JPEG pictures or listen to MP3 files using standard SD memory card
- Weatherproof to IPX4 standards
- Power from the car or ATV with 12V DC power adapter or go mobile with the internal, rechargeable Li-Ion battery

Includes

- Device cradle with suction cup mounting bracket
- 12V DC power adapter for charging/powering by vehicle
- Mini-USB cable for data downloads and charging/powering by computer

Portable Case Option

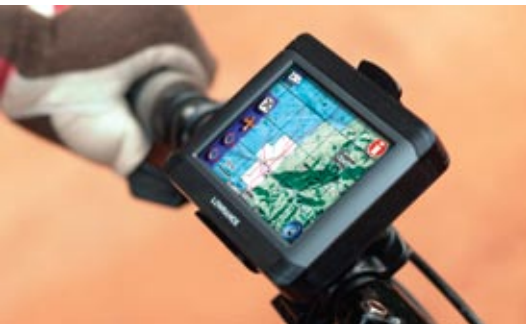
A rugged, handy carry case for XOG™ and accessories. Includes protective slip case with belt clip for outdoor navigation. Fully padded case features adjustable divided storage, top-loading dual zipper closure with security flap and carrying handle.



Enjoy lake maps with plug-and-play ease on optional SD cards.



Hit the trail with optional MapSelect.com downloads.



Get rolling with topo and satellite map options from MapSelect.com.



Drive confidently with preloaded U.S. and Canada NAVTEQ® maps.

Model	Part
XOG™	125-19

Optional Accessories	
XOG™	
CC-8 Carry case with protective slip case	124-54
MB-32 Handlebar mounting bracket	124-52
PAC-9 AC power adapter with 12V accessory socket	127-41

iFINDER® Handheld GPS



iFINDER® HUNT c

This popular IPX7 waterproof GPS handheld is perfect for any sportsman who needs highly precise navigation with a wide range of plug-and-play maps, a digital compass and barometric altimeter with weather alerts.

- Scout mode and 17 hunting icons let you set hunting perimeter and mark game signs, blind/stand locations, etc.
- Wide range of mapping options including topo, Lowrance Fishing Hot Spots®, LakeMaster® ProMaps and NauticPath™ plus Navionics® displayed on 3" x 7.6 cm diag., 256-color, hi-res LED screen
- Voice notes tied directly to waypoints help you record navigation/hunting tips
- Electronic compass, barometric altimeter with weather alerts
- Waterproof to IPX7 standards
- Up to 16 hours operation on two AA batteries (not included)



iFINDER® EXPEDITION c

When you need a reliable, color handheld GPS with built-in compass and altimeter that is easy on the budget, there is no better product than the iFinder EXPEDITION c. This fully loaded GPS is perfect for hiking, backpacking, hunting and works with a wide variety of optional maps including topographic, Lowrance Fishing Hot Spots®, LakeMaster® ProMaps and NauticPath™ plus Navionics®

- 16 Channel GPS + WAAS
- 2.83" x 7.2 cm diag., 320V x 240H pixel, 256-color TFT display
- Built-in background map and compatible with high-detail, plug-and-play map cards.
- Unique "Scout Mode" to create zones and perimeter borders
- 63 color icons to mark waypoints
- Up to 1,000 waypoints, 1,000 event markers, and 100 routes
- Submersible (IPX7)
- Compact 2.5"W x 5.6"H x 1.2"D size
- 12V DC power adapter included
- Up to 14 hours operation on two AA batteries (not included)



iFINDER® H2O c

This popular IPX7 waterproof handheld is compatible with a wide range of plug-and-play maps, including topographic, Lowrance Fishing Hot Spots®, LakeMaster® ProMaps and NauticPath™ plus Navionics®

- 16 Channel GPS+WAAS
- 2.83" x 7.2 cm diag., 320V x 240H pixel, 256-color TFT display
- Compact 2.5"W x 5.6"H x 1.2"D size
- Continental U.S. and Hawaii background map
- Stores up to 1,000 waypoints, 1,000 event markers, and 100 routes
- Saves up to 100 retracable trails with up to 10,000 points in any trail
- Submersible (IPX7)
- 12V DC power adapter included
- Up to 14 hours operation on two AA batteries (not included)

Model	Part
iFINDER® HUNT C	112-661
iFINDER® EXPEDITION C	112-861
iFINDER® H2O C	112-671



Outdoor GPS Navigation

iFINDER® Handheld GPS



iFINDER® H2O

Step up to a handheld GPS that is affordable and reliable, yet allows you to customize your experience with plug-and-play maps, including topographic, Lowrance Fishing Hot Spots®, LakeMaster® ProMaps and NauticPath™ plus Navionics®. A great choice for the sports enthusiast whether traveling on the water or on the trail.

- 12 channel GPS+WAAS provides fast and continuous location and navigation
- 3 7/16 in. diag., backlit, grayscale display
- High detail, pre-loaded background map for Continental U.S. and Hawaii
- Stores up to 1,000 waypoints, 1,000 event markers, and 100 routes
- Saves up to 100 retracable trails with up to 10,000 points per trail
- Submersible (IPX7)
- 12V DC power adapter included
- Up to 12 hours operation on two AA batteries (not included)



iFINDER® GO2

This portable and affordable handheld GPS is perfect for general outdoor activities or to use as a reliable back-up to a primary marine navigation system. The GO2 also provides a built-in base map (often not available in competitive models at the same price range) for quick location reference with roads, rivers, etc.

- 16 channel GPS+WAAS provides fast and continuous location and navigation
- 2 7/8 in. diag. backlit, grayscale display
- 64 MB onboard memory with interstate exit services, major roads/cities, lakes, rivers and national parks/forests pre-loaded
- 42 graphic icons to mark 1000 waypoints and track up to 1000 routes or 100 retracable trails
- Submersible (IPX7)
- Up to 50-hour operation on two AA batteries (not included)

Model	Part
iFINDER® H2O	112-151
iFINDER® GO2	112-492

Optional Accessories	
iFINDER® (except GO2)	
HL-10 Protective slip case with belt clip	093-20
MB-11 Ball mounting bracket with arm and cradle	113-46
MB-12 Handlebar mounting bracket with arm and cradle	113-50



Superb coverage and choices with powerful plug-and-play electronic charting choices for supreme navigational awareness. Simply insert into your compatible Lowrance chartplotter for the greatest of detail.

Navionics®

Lowrance gives a greater dimension in charting selections for all HDS chartplotters with full Navionics® compatibility – the world's largest and most experienced provider in worldwide electronic marine cartography.

Platinum+

The most advanced technology and best imaging available in multi-dimensional charts provide complete coast pilot, high-resolution top-down photo/chart overlay, full-view panoramic pictures, improved 3D view and high-definition fishing detail included on the same chartchip. www.navionics.com for more.

Platinum

The first and most award-winning multi-dimensional electronic charts for chartplotters, each provide a whole new perspective for navigation with complete coastal pilots and satellite imagery overlays and 3D view and panoramic pictures, plus free high-definition fishing detail is now included. www.navionics.com for more.

HotMaps Platinum Lake Maps

The new 2009 edition features over 700 exclusive high-definition U.S. lake maps to 1-foot contours of select lakes from Navionics' own 3D surveys. Includes 3D view, top-down imagery, panoramic photos, plus over 14,000 lake maps with structure, major roads, county lines and more, in a choice of 15 regions. www.navionics.com for more.

Gold and Platinum Charts Powered by TurboView™

As embedded software in all Lowrance HDS chartplotter models, TurboView™ greatly enhances the display of all Navionics Gold and Platinum chartcards for supreme situational awareness. The result is seamless zooming and with Platinum transition between 2D and 3D modes, improved shadowing for greater depth perception, real-time overlay of nav data on 3D contour profiles, and a special FlyThru feature that integrates high-speed chart panning and zooming with photography for a new and helpful boater perspective.

Navionics® chart/mapping compatibility with free HDS software upgrade in Q1 2009.

Gold

Navionics® Gold electronic charts are a fundamental tool of navigation, with features tuned for serious fishing and cruising such as wrecks, port services enhancements, major coastal roads and high-definition fishing detail showing near-shore and offshore structure, ledges and canyons. www.navionics.com for more.

Lowrance

Excellence in coverage, detail and choices with amazing affordability, for inland land and water to comprehensive coastal coverages.



Inland Waters

LakeMaster® ProMaps

A decided favorite for Michigan, Minnesota and Wisconsin boaters and anglers with incredibly detailed, expanded-coverage lake maps of popular fishing destinations. Along with thousands of lakes and ponds, and hundreds with depth contours, all ProMaps cards feature high-detail LakeMaster® surveyed lakes with 1'-3' depth contours. Plus, exclusive Lowrance MapCreate™ cartography is included for excellent city/roads/surface detail, plus thousands of searchable Points-of-Interests.

LKPM-MI - Over 18,000 lakes, bays, rivers and ponds; 800+ lakes with depth contours, with 49 lakes featuring high-definition LakeMaster depth contour surveys. Plus 96 lakes in IL, IN, OH and WI.

LKPM-MN - Over 750 lakes; 79 lakes with the LakeMaster high-detail lake surveys. Includes WI, MI, IA, SD and ND waters.

LKPM-WI - 100 lakes with LakeMaster depth contour surveys, plus over 390 featuring standard depth contour intervals. Includes lakes in MI, IL and MN.



Inland Waters

Fishing Hot Spots® PRO

The serious Lowrance angler's choice for navigation guidance on water and off. A choice of four regional high-capacity SD memory cards collectively present depth contours for 3,600 of America's prime fishing lakes, with over 380 lakes with legendary Fishing Hot Spots depth detail and marked fishing areas. Each also include exclusive Lowrance MapCreate™ Series 7 urban and rural detail of roads, highways, cities, searchable Points-of-Interests and more for getting to, around and from the lake.

FHSP-N - IL, IN, IA, MI, MN, MT, NE, ND, SD, WI, WY

FHSP-E - AL, CT, DE, FL, GA, KY, ME, MD, MA, NH, NJ, NY, NC, OH, PA, RI, SC, TN, VA, WV

FHSP-S - AZ, AR, CO, KS, LA, MS, MO, NM, OK, TX

FHSP-W - CA, ID, NV, OR, UT, WA



Inland Land

FreedomMaps™ USA EX

Expanded coverage on high-capacity SD memory cards for the whole USA. Features over 3,000 lakes with depth contours. Plus topo detail including elevations and hunting databases, cities/highways/landmarks, searchable Points-of-Interests and much more. Great detail and each a great deal in a choice of five broad geographic regions.

F101EX-N - MT, WY, ND, SD, NE, MN, IA, MI, WI, IL, IN

F102EX-E - ME, VT, NH, MA, NY, CT, NJ, PA, DE, RI, MD, WV, OH, VA, KY, TN, NC, SC, GA, AL, FL

F103EX-S - AZ, NM, CO, KS, OK, TX, MO, AR, LA, MS

F104EX-W - CA, NV, UT, ID, OR, WA

F105EX-A&H - AK, HI

Inland Land

FreedomMaps™ Canada EX

Superbly-detailed electronic Canadian mapping with land-based topo data coverage for virtually all provinces and territories. Each SD memory card features world class map data from DMTI Spatial, with cities – towns, highways, city – rural roads, railways, rivers, streams, lakes-ponds, detailed shorelines, province – municipality boundaries, topographical contours, plus searchable Points-of-Interests, and much more.

F110EX-NC - Nunavut, Northwest Territories, Yukon Territory, British Columbia, Alberta, Saskatchewan, Manitoba, Ontario, Quebec, Newfoundland, Labrador and Hudson Bay.

F111EX-WC - British Columbia, Alberta, Saskatchewan, Manitoba, Yukon NT and Nunavut, Great Slave Lake, Lake Superior, Hudson Bay, plus Seattle and Spokane coverage.

F112EX-EC - Manitoba, Ontario, Quebec, Newfoundland, Labrador, Prince Edward Island, Nova Scotia, New Brunswick, Hudson Bay and all Great Lakes, plus Milwaukee, Chicago, Toledo, Detroit, Cleveland, Buffalo and Syracuse.



Inland Land/Marine

USA Series-7 Accessories Pack

The complete, enhanced and expanded Lowrance system to make your own detailed topo mapcards over and over on your PC, with coverage for all 50 states. One DVD includes over 3,000 lakes with depth contours, topo contours with elevation markers, enhanced shorelines detail, 2 million Points-of-Interests, exclusive hunting databases, cities, highways, landmarks and scores more. Includes SD card reader-writer and blank, high-capacity SD memory card for a surprisingly low price!

Compatible for PC systems with Pentium 133 Mhz or higher and a DVD drive, 64MB RAM (128MB recommended), 200MB free hard disc space, high-color (16 bit) display, Microsoft® Windows® 98 or higher.

Coastal

NauticPath™ USA Coastal

Detail-rich marine charting, preloaded on SD memory card for your Lowrance GPS, for one amazing low price. NauticPath™ USA Coastal delivers incredible, object-oriented detail with shaded depth contours, intertidal zones, spot soundings, wrecks, nav aids, port plans, restricted areas, anchorages, lights, tides – currents, expansive chart information (number, name, scale, etc.) and other navigation features. Just one card gives you expansive electronic chart coverage of the East, West, Gulf, Hawaii, and Alaska coasts, the Great Lakes, plus the Bahamas, Puerto Rico, and the U.S. Virgin Islands - all with the appearance of paper charts with seamless vector graphics. All this without unlock codes or added costs makes Lowrance NauticPath™ coastal electronic charts an unequalled marine cartography value!



Coastal

NauticPath™ International

When going global, you can experience the same high-level NauticPath™ offshore/coastal navigational electronic chart detail and information, with worldwide coverage choices, at an affordable price point compared to any other. Each NauticPath™ International choice is preloaded on SD memory card for plug-and-play convenience with your compatible Lowrance GPS. For exhibits on individual chartcard coverage areas, visit the Mapping area of the Lowrance website.

Cartography Options	Part
All Navionics® charts	www.navionics.com
LKPM-MI LakeMaster® ProMaps Michigan	108-202
LKPM-MN LakeMaster® ProMaps Minnesota	108-203
LKPM-WI LakeMaster® ProMaps Wisconsin	108-204
FHSP-N Fishing Hot Spots® PRO North	108-205
FHSP-E Fishing Hot Spots® PRO East	108-206
FHSP-S Fishing Hot Spots® PRO South	108-207
FHSP-W Fishing Hot Spots® PRO West	108-208
F101EX-N FreedomMaps™ USA EX North	108-209
F102EX-E FreedomMaps™ USA EX East	108-210
F103EX-S FreedomMaps™ USA EX South	108-211
F104EX-W FreedomMaps™ USA EX West	108-212
F105EX-A&H FreedomMaps™ USA EX Alaska/Hawaii	108-213
F110EX-NC FreedomMaps™ Canada EX North Central	108-214
F111EX-WC FreedomMaps™ Canada EX West Central	108-215
F112EX-EC FreedomMaps™ Canada EX East Central	108-216
MC-7 MapCreate™ Series 7 Accessories Pack	095-61
NP-USA NauticPath USA Coastal	108-129
NP-Caribbean	108-192
NP-Central America/West	108-193
NP-South America	108-194
NP-Europe West	108-195
NP-Europe North	108-196
NP-Mediterranean	108-197
NP-Africa/MiddleEast/India	108-198
NP-SEAsia/PacificIsland	108-199
NP-Australia/NewZealand	108-200
NP-Japan/East Asia	108-201

Specifications

HDS



Other



	HDS-10	HDS-8	HDS-7	HDS-5	HDS-5x	M68c
Display	10.4" Diag. (26.4 cm) 16-bit color SolarMAX™ PLUS TFT	8.4" Diag. (21.3 cm) 16-bit color SolarMAX™ PLUS TFT	6.4" Diag. (16.3 cm) 16-bit color SolarMAX™ PLUS TFT	5" Diag. (12.7 cm) 16-bit color SolarMAX™ PLUS TFT	5" Diag. (12.7 cm) 16-bit color SolarMAX™ PLUS TFT	3.5" Diag. (8.9 cm) 256-color Active Matrix TFT
Resolution	Super VGA 600V x 800H pixels	Super VGA 600V x 800H pixels	Full VGA 480V x 640H pixels	High Contrast 480V x 480H pixels	High Contrast 480V x 480H pixels	High Contrast 320V x 240H pixels
Backlighting	Pure white LED screen/ keypad adjusts to zero dim	Pure white LED screen/ keypad adjusts to zero dim	Pure white LED screen/ keypad adjusts to zero dim	Fluorescent cold cathode adjustable screen/keypad	Fluorescent cold cathode adjustable screen/keypad	White LED adjustable screen/keypad
Power	250W/32W RMS actual; 30,000W/3,750W RMS analog equivalent	250W/32W RMS actual; 30,000W/3,750W RMS analog equivalent	250W/32W RMS actual; 30,000W/3,750W RMS analog equivalent	250W/32W RMS actual; 30,000W/3,750W RMS analog equivalent	250W/32W RMS actual; 30,000W/3,750W RMS analog equivalent	800W/100W RMS
Operating Frequency	50/200 kHz or 83/200 kHz	50/200 kHz or 83/200 kHz	50/200 kHz or 83/200 kHz	50/200 kHz or 83/200 kHz	50/200 kHz or 83/200 kHz	200 kHz with Deep Water Pack choice
Depth Capability	To 5,000' (1,524 m) Based on transducer*	To 5,000' (1,524 m) Based on transducer*	To 5,000' (1,524 m) Based on transducer*	To 5,000' (1,524 m) Based on transducer*	To 5,000' (1,524 m) Based on transducer*	To 800' (183 m) and To 800' (244 m) with Deep Water Pack
Operating Voltage	10-17V DC	10-17V DC	10-17V DC	10-17V DC	10-17V DC	10-17V DC
GPS Receiver/ Antenna	Internal high-sensitivity 16-channel GPS + WAAS+ EGNOS+ MSAS	Internal high-sensitivity 16-channel GPS + WAAS+ EGNOS+ MSAS	Internal high-sensitivity 16-channel GPS + WAAS+ EGNOS+ MSAS	Internal high-sensitivity 16-channel GPS + WAAS+ EGNOS+ MSAS	None	Internal 12-channel GPS+WAAS
Waypoint Management	5,000 waypoints, 200 routes, 10 trails up to 12,000 points each; specific icons for navigation and fishing	5,000 waypoints, 200 routes, 10 trails up to 12,000 points each; specific icons for navigation and fishing	5,000 waypoints, 200 routes, 10 trails up to 12,000 points each; specific icons for navigation and fishing	5,000 waypoints, 200 routes, 10 trails up to 12,000 points each; specific icons for navigation and fishing	Waypoints with network only	Up to 1,000 waypoints & 1,000 event markers, up to 100 routes & 100 plot trails; 42 different marker icons
Communication	NMEA 2000®, NMEA 0183, Lowrance Ethernetworks compatible	NMEA 2000®, NMEA 0183, Lowrance Ethernetworks compatible	NMEA 2000®, NMEA 0183, Lowrance Ethernetworks compatible	NMEA 2000®, NMEA 0183, Lowrance Ethernetworks compatible	NMEA 2000®, NMEA 0183, Lowrance Ethernetworks compatible	NMEA 0183
Languages	English, Spanish, French Portuguese	English, Spanish, French Portuguese	English, Spanish, French Portuguese	English, Spanish, French Portuguese	English, Spanish, French Portuguese	Ten (10) menu selections
Memory Card Slots	Two (2) SD/MMC slots for cartography, or recording sonar and navigation data	Two (2) SD/MMC slots for cartography, or recording sonar and navigation data	One (1) SD/MMC slots for cartography, or recording sonar and navigation data	One (1) SD/MMC slots for cartography, or recording sonar and navigation data	None	None
Case Size	8.85" H (22.5 cm) 12.28" W (31.2 cm) 3.63" D (9.2 cm) Sealed and waterproof, suitable for saltwater use	7.76" H (19.7 cm) 10.59" W (26.9 cm) 3.68" D (9.4 cm) Sealed and waterproof, suitable for saltwater use	6.46" H (16.4 cm) 8.78" W (22.3 cm) 3.46" D (8.8 cm) Sealed and waterproof, suitable for saltwater use	5.72" H (14.5 cm) 7.24" W (18.4 cm) 3.46" D (8.8 cm) Sealed and waterproof, suitable for saltwater use	5.72" H (14.5 cm) 7.24" W (18.4 cm) 3.46" D (8.8 cm) Sealed and waterproof, suitable for saltwater use	5.8" H (14.7 cm) 4.3" W (10.8 cm) 2.5" D (6.4 cm) Sealed and waterproof, suitable for saltwater use

HDS Chartplotter



	HDS-10m	HDS-8m	HDS-7m	HDS-5m	HDS-5 Baja
Display	10.4" (26.4 cm) 16-bit color SolarMAX™ PLUS TFT	8.4" (21.3 cm) 16-bit color SolarMAX™ PLUS TFT	6.4" (16.3 cm) 16-bit color SolarMAX™ PLUS TFT	5" (12.7 cm) 16-bit color SolarMAX™ PLUS TFT	5" (12.7 cm) 16-bit color SolarMAX™ PLUS TFT
Resolution	Super VGA 600V x 800H pixels	Super VGA 600V x 800H pixels	Full VGA 480V x 640H pixels	High contrast 480V x 480H pixels	High contrast 480V x 480H pixels
Backlighting	Pure white LED screen/ keypad adjusts to zero dim	Pure white LED screen/ keypad adjusts to zero dim	Pure white LED screen/ keypad adjusts to zero dim	Fluorescent cold cathode adjustable screen/keypad	Fluorescent cold cathode adjustable screen/keypad
Operating Voltage	10-17V DC	10-17V DC	10-17V DC	10-17V DC	10-17V DC
GPS Receiver/ Antenna	Internal high-sensitivity 16-channel GPS + WAAS+ EGNOS+ MSAS	Internal high-sensitivity 16-channel GPS + WAAS+ EGNOS+ MSAS	Internal high-sensitivity 16-channel GPS + WAAS+ EGNOS+ MSAS	Internal high-sensitivity 16-channel GPS + WAAS+ EGNOS+ MSAS	Internal high-sensitivity 16-channel GPS + WAAS+ EGNOS+ MSAS
Waypoint Management	5,000 waypoints, 200 routes, 10 trails up to 12,000 points each; specific icons for navigation and fishing	5,000 waypoints, 200 routes, 10 trails up to 12,000 points each; specific icons for navigation and fishing	5,000 waypoints, 200 routes, 10 trails up to 12,000 points each; specific icons for navigation and fishing	5,000 waypoints, 200 routes, 10 trails up to 12,000 points each; specific icons for navigation and fishing	5,000 waypoints, 200 routes, 10 trails up to 12,000 points each; specific icons for navigation and fishing
Communication	NMEA 2000®, NMEA 0183, Lowrance Ethernetworks compatible	NMEA 2000®, NMEA 0183, Lowrance Ethernetworks compatible	NMEA 2000®, NMEA 0183, Lowrance Ethernetworks compatible	NMEA 2000®, NMEA 0183, Lowrance Ethernetworks compatible	NMEA 2000®, NMEA 0183, Lowrance Ethernetworks compatible
Languages	English, Spanish, French Portuguese	English, Spanish, French Portuguese	English, Spanish, French Portuguese	English, Spanish, French Portuguese	English, Spanish, French Portuguese
Memory Card Slots	Two (2) SD/MMC slots for cartography, or recording sonar and navigation data	Two (2) SD/MMC slots for cartography, or recording sonar and navigation data	One (1) SD/MMC slots for cartography, or recording sonar and navigation data	One (1) SD/MMC slots for cartography, or recording sonar and navigation data	One (1) SD/MMC slots for cartography, or recording sonar and navigation data
Case Size	8.85" H (22.5 cm) 12.28" W (31.2 cm) 3.63" D (9.2 cm) Sealed and waterproof, suitable for saltwater use	7.76" H (19.7 cm) 10.59" W (26.9 cm) 3.68" D (9.4 cm) Sealed and waterproof, suitable for saltwater use	6.46" H (16.4 cm) 8.78" W (22.3 cm) 3.46" D (8.8 cm) Sealed and waterproof, suitable for saltwater use	5.72" H (14.5 cm) 7.24" W (18.4 cm) 3.46" D (8.8 cm) Sealed and waterproof, suitable for saltwater use	5.72" H (14.5 cm) 7.24" W (18.4 cm) 3.46" D (8.8 cm) Sealed and waterproof, suitable for saltwater use

* Actual depth capabilities depend on transducer configuration and installation, bottom composition and water conditions. All sonar units typically read deeper in fresh water than salt water. HDS products for use in North and South America only. All functions not available outside these regions.

Fishfinder Detail



	X135	X136c DF	X125	X96	X50 DS	X67c	X52	X59 DF
Display	5" Diag. (12.7 cm) Film SuperTwist	5" Diag. (12.7 cm) Film SuperTwist	5" Diag. (12.7 cm) Film SuperTwist	5" Diag. (12.7 cm) Film SuperTwist	4" Diag. (10.2 cm) Film SuperTwist	3.5" Diag. (8.9 cm) 256-color Active Matrix TFT	4" Diag. (10.2 cm) Film SuperTwist	4" Diag. (10.2 cm) Film SuperTwist
Resolution	480V x 480H (230,400 pixels)	480V x 480H (230,400 pixels)	480V x 480H (230,400 pixels)	320V x 320H (102,400 pixels)	240V x 160H (38,400 pixels)	320V x 240H (102,400 pixels)	240V x 160H (38,400 pixels)	240V x 160H (38,400 pixels)
Backlighting	White LED Screen - Keypad	White LED Screen - Keypad	Amber LED Screen - Keypad	Incandescent Screen - Keypad	Incandescent Screen - Keypad	White LED Screen - Keypad	White LED Screen - Keypad	White LED Screen - Keypad
Power	4,000 Watts Peak-to-Peak (500 Watts RMS)	4,000 Watts Peak-to-Peak (500 Watts RMS)	2,400 Watts Peak-to-Peak (300 Watts RMS)	1,500 Watts Peak-to-Peak (188 Watts RMS)	1,500 Watts Peak-to-Peak (188 Watts RMS)	800 Watts Peak- to-Peak (100 Watts RMS)	1,500 Watts Peak-to-Peak (188 Watts RMS)	2,400 Watts Peak-to-Peak (300 Watts RMS)
Frequency	200 kHz	50/200 kHz	200 kHz	200 kHz	83/200 kHz (Dual-Search)	200 kHz (Freshwater or Saltwater Packs)	200 kHz	50/200 kHz
Depth	To 1,000' (305 m) w/200 kHz	To 2,500' (762 m) w/50 kHz	To 900' (274 m) w/200 kHz	To 800' (244 m) w/200 kHz	To 1,000' (305 m) w/83 kHz	To 600' (183 m) w/200 kHz	To 600' (183 m) w/200 kHz	To 1,500' (457 m) w/50 kHz
Water Temp	Standard (w/select transducers)	Standard (w/select transducers)	Standard (w/select transducers)	Standard (w/select transducers)	Standard (w/select transducers)	Standard (w/select transducers)	Standard (w/select transducers)	Standard (w/select transducers)
Key Features	GRAYLINE™, ASP™, Split- Screen Zoom, HyperScroll™, FishReveal™, NMEA 2000®	GRAYLINE™, ASP™, Split- Screen Zoom, HyperScroll™, FishReveal™, NMEA 2000®	GRAYLINE™, ASP™, Split- Screen Zoom, HyperScroll™, FishReveal™	GRAYLINE™, ASP™, Split- Screen Zoom, HyperScroll™, FishReveal™	GRAYLINE™, ASP™, Split- Screen Zoom, HyperScroll™	COLORLINE™, ASP™, Split- Screen Zoom, HyperScroll™	GRAYLINE™, ASP™, Split- Screen Zoom, HyperScroll™, FishReveal™, NMEA 2000®	GRAYLINE™, ASP™, Split- Screen Zoom, HyperScroll™, FishReveal™, NMEA 2000®
Alarms	Deep/Shallow/ Fish/Zone	Deep/Shallow/ Fish/Zone	Deep/Shallow/ Fish/Zone	Deep/ Shallow/Fish	Deep/ Shallow/Fish	Deep/ Shallow/Fish	Deep/ Shallow/Fish	Deep/ Shallow/Fish
Speed/ Distance	Optional	Standard (with select transducers)	Optional	Optional	None	Optional	Optional	Standard (w/select transducers)
Case Size	6.9" W (17.6 cm) 5.4" H (13.8 cm) 3.4" D (8.6 cm)	6.9" W (17.6 cm) 5.4" H (13.8 cm) 3.4" D (8.6 cm)	6.9" W (17.6 cm) 5.4" H (13.8 cm) 3.4" D (8.6 cm)	6.9" W (17.6 cm) 5.4" H (13.8 cm) 3.4" D (8.6 cm)	4.3" W (10.8 cm) 5.8" H (14.7 cm) 2.5" D (6.4 cm)	4.3" W (10.8 cm) 5.8" H (14.7 cm) 2.5" D (6.4 cm)	5.4" W (13.6 cm) 5.2" H (13.2 cm) 2.6" D (6.6 cm)	5.4" W (13.6 cm) 5.2" H (13.2 cm) 2.6" D (6.6 cm)



Specifications

VHF



VHF/GPS Characteristics	Fixed Mount LVR-880	Fixed Mount LVR-250	Portable LHR-20/22	Portable Combo LHR-80
Dimensions (HWD) and weight – w/o Bracket, Mike, or antenna	3.8" x 7.1" x 6.1" 96 x 180 x 156mm 3.7 lbs (1.66 kg)	2.8" x 6.3" x 6.1" 72 x 160 x 156mm 2.8 lbs (1.29 kg)	5.35" x 2.28" x 1.20" 136 x 58 x 30.5mm 0.62 lbs (0.28 kg) with battery	5.50" x 2.67" x 1.50" 139.7 x 67.8 x 38.1 mm 0.70 lbs (0.318 kg) with battery
LCD Display (HW)	Backlight FSTN Full bitmapped (64 x 128) 1.3" x 2.6"; 33 x 71mm	Backlight FSTN 1.0" x 1.8"; 26 x 46mm 4 line x 12 Character + Icons	Backlight FSTN 0.8" x 1.4"; 20 x 35mm Custom Digits + Icons	Backlight FSTN Full bitmapped (128 x 128) 1.52" x 1.52"; 38.7 x 38.7mm
Channel Bank (US) and Select Operation	All USA, International, Canada, 10 NOAA Weather, Rotary Control	All USA, International, Canada, 10 NOAA Weather, Rotary Control	All USA, International, Canada, 10 NOAA Weather, ATIS – UP/DOWN control	All USA, International, Canada, 10 NOAA Weather – UP/DOWN control
Hand Mike Features	PTT button, Hi/Lo, WX, CH16/9, 3CH, channel up/down, built-in speaker and backlighting	PTT button, Hi/Lo, WX, CH16/9, 3CH, channel up/down, built-in speaker and backlighting	—	—
Power Supply/Battery Life	13.8 VDC±15%	13.8 VDC±15%	7.4 v – 1600 mAh Li-Ion >10 hr (5W 5%, 5%, 90% ratio) >13 hr (1W 5%, 5%, 90% ratio) With battery level indicator	7.4V – 1400 mAh Li-Polymer >8 hr (5W 5%, 5%, 90% ratio, GPS on). 230ma in Standby >9 hr (1W 5%, 5%, 90% ratio GPS off). 70ma in Standby With battery level indicator
Audio Output Power	2W - 8Ω @ 10% distortion 94dBA internal speaker 4W - 4Ω @ 10% distortion with external speaker	2W - 8Ω @ 10% distortion 89dBA internal speaker 4W - 4Ω @ 10% distortion with external speaker	250mW internal speaker	250mW internal speaker
Digital Selective Calling - DSC	SC-101 US	SC-101 US	—	SC-101 US
DSC Call Types	All calls are available - including high resolution position polling and Track-Your-Buddy	All calls are available - including high resolution position polling	—	All calls are available - including high resolution position polling and Track-Your-buddy
Directory/MMSI Entry (US)	20 Individual + Group MMSI + User MMSI	20 Individual + Group MMSI + User MMSI	—	20 Individual + Group MMSI + User MMSI
Get Buddy	—	—	—	YES
Call Logs	20 Individual/10 Distress	20 Individual/10 Distress	—	20 Individual/10 Distress
GPS Input + Output	NMEA 0183/NMEA 2000®	NMEA 0183	—	NMEA 0183 output while on cradle
Hailer with Intercom Talkback/ External Speaker	Powerful 22W Hailer with Auto/manual sounds and listen-back, plus external speaker jack	No Hailer - has external speaker jack	—	—
Navigation with Waypoints and MOB	200 Waypoints with instant GO control	—	—	500 Waypoints with instant GO control. One track with 200 Trackpoints/control. Selection to show nearest 5 Waypoints
FM Stereo Radio	USA/EU/AUS bands	—	—	—
S.A.M.E. Weather Alert	County-by-County warnings	—	—	—
NOAA Weather Alert	YES	YES	YES	YES
Local/Distance	YES	YES	—	—
3 Favorite Channel Select/Scan	YES	YES	Memory CH Select/Priority scan	YES
12db Sinad Sensitivity	.25uV (distant)/2.5uV (local)	.25uV (distant)/2.5uV (local)	.25uV	.25uV
Other Standard Features	Flush mount kit and sun cover included. Memory upgrades via NMEA2000.	Flush mount kit and sun cover included.	4 bar signal strength meter. LHR-22 has RealTree Advantage HD CAMO pattern and includes a CAMO AA tray.	IT FLOATS. Built-in 12-channel GPS receiver with lat/lon output, Great Circle navigation trackplotter display, local waypoint icons and cursor control. GPS satellite screen.

All VHF's share the following features:

Tx Power: 25W/1W fixed, 5W/1W portable + indicators

Current Drain: 6A at 25W/1.5A at 1W fixed mount
1.75A at 5W/0.8A at 1W portable

Battery monitor: Yes – level indicator with portable

Compass safe distance: 0.45m – fixed mount

Temperature Range: -4 to 122°F (-20 to 50°C)

Waterproof Rating: JIS7

Antenna Connector: SO-239; SMB – portable

Transmitter Protection: Open/Short circuit of antenna

Modulation Distortion: <4% at 1kHz with ±3KHz deviation

Frequency Control: PLL with ±10ppm stability

Max frequency deviation: ±5KHz

NOAA Tone Wx Alert: Yes

All Scan/Dual watch/Tri watch Memory Scan: Yes

Residual Noise Level: More than -40dB unsquelched

Adjacent Noise Level: More than 65dB

Spurious Response: More than 65dB

Intermodulation Rejection Ratio: More than 65dB

Residual Noise Level: More than -40dB unsquelched



iFINDER® Handheld GPS



	iFINDER® HUNT c	iFINDER EXPEDITION™ c	iFINDER® H2O c	iFINDER® H2O	iFINDER® GO2
Receiver	16-channel GPS+WAAS	16-channel GPS+WAAS	16-channel GPS+WAAS	12-channel GPS+WAAS	16-channel GPS+WAAS
Display	2.83" Diag. (7.2 cm) 256-color TFT 320V x 240H pixel white LED backlit	2.83" Diag. (7.2 cm) 256-color TFT 320V x 240H pixel white LED backlit	2.83" Diag. (7.2 cm) 256-color TFT 320V x 240H pixel white LED backlit	3" Diag. (7.6 cm) Film SuperTwist 240V x 180H pixel white LED backlit	2" Diag. (5 cm) Film SuperTwist 200V x 140H pixel amber LED backlit
Background Map	Built-in enhanced USA with major cities/ roads, Interstate exit service and marine nav aids	Built-in enhanced USA with major cities/ roads, Interstate exit service and marine nav aids	Built-in enhanced USA with major cities/ roads, Interstate exit service and marine nav aids	Built-in enhanced USA with major cities/ roads, Interstate exit service and marine nav aids	Built-in USA with major cities/ roads, Interstate exit service, national parks and marine nav aids
Chart Options	MMC/SD memory card slot to display MapCreate™, FreedomMaps™, Fishing Hot Spots®, LakeMaster®, NauticPath™ and Navionics®	MMC/SD memory card slot to display MapCreate™, FreedomMaps™, Fishing Hot Spots®, LakeMaster®, NauticPath™ and Navionics®	MMC/SD memory card slot to display MapCreate™, FreedomMaps™, Fishing Hot Spots®, LakeMaster®, NauticPath™ and Navionics®	MMC/SD memory card slot to display MapCreate™, FreedomMaps™, Fishing Hot Spots®, LakeMaster®, NauticPath™ and Navionics®	none
Key Features	Compass, Barometer, Hunt Mode, Scout Mode, MP3, Voice Notes, 10 languages, NMEA 0183, Back-up memory	Compass, Barometer, Hunt Mode, Scout Mode, MP3, Voice Notes, 10 languages, NMEA 0183, Back-up memory	10 languages, NMEA 0183, Back-up memory	10 languages, NMEA 0183, Back-up memory	10 languages, NMEA 0183, Back-up memory
Position Points	Up to 2,000 waypoints & 1,000 event markers	Up to 1,000 waypoints & 1,000 event markers	Up to 1,000 waypoints & 1,000 event markers	Up to 1,000 waypoints & 1,000 event markers	Up to 1,000 waypoints & 1,000 event markers
Routes/Trails	Up to 100 routes & 100 plot trails (10,000 points/trail)	Up to 100 routes & 100 plot trails (10,000 points/trail)	Up to 100 routes & 100 plot trails (10,000 points/trail)	Up to 100 routes & 100 plot trails (10,000 points/trail)	Up to 100 routes & 100 plot trails (10,000 points/trail)
Graphic Icons	63, + 17 exclusive hunting icons	63	63	42	42
Zoom	40 ranges, .02-4,000 miles	40 ranges, .02-4,000 miles	40 ranges, .02-4,000 miles	40 ranges, .02-4,000 miles	40 ranges, .02-4,000 miles
Case Size	2.5" W (6.4 cm) 5.8" H (14.2 cm) 1.2" D (3 cm)	2.5" W (6.4 cm) 5.8" H (14.2 cm) 1.2" D (3 cm)	2.5" W (6.4 cm) 5.8" H (14.2 cm) 1.2" D (3 cm)	2.5" W (6.4 cm) 5.8" H (14.2 cm) 1.2" D (3 cm)	2.12" W (5.4 cm) 5.15" H (13.1 cm) 1.24" D (3.15 cm)
Input Power	3 vDC (2 AAs) or 5-35 vDC accessory power cable	3 vDC (2 AAs) or 5-35 vDC accessory power cable	3 vDC (2 AAs) or 5-35 vDC accessory power cable	3 vDC (2 AAs) or 5-35 vDC accessory power cable	3 vDC (2 AAs) or 5-35 vDC accessory power cable
Battery Life (w/1-second updates)	Up to 16 hours	Up to 14 hours	Up to 14 hours	Up to 12 hours	Up to 50 hours
Weight (w/batteries)	8.7 oz (247 g)	8.7 oz (247 g)	8.7 oz (247 g)	8.7 oz (247 g)	5.36 oz (152 g)

Radar



	LRA-1800	LRA-2400
Type	Radome	Radome
Size/Weight	18 in. (45 cm)/ 9 lbs. (4.2 kg)	24 in. (60 cm)/ 22 lbs. (10 kg)
Output Power	2 kW	4 kW
Max. Range Scale	24 nm	48 nm
Beamwidth (H/V)	5.2°/25°	4°/25°
Voltage Required	10.8 – 15.6 vDC	10.8 – 42 vDC
Rotation Speed	27 RPM	27 RPM



** Specifications are subject to change without notice

LOWRANCE®



About Navico

Navico is the parent company to five leading marine electronics brands: B&G, Eagle, Lowrance, Northstar and Simrad. Navico has approximately 2,500 employees globally and is headquartered in Oslo, Norway. The company has development and manufacturing facilities in the USA, Mexico, the UK, Norway and New Zealand.

NAVICO AMERICAS

Corporate Headquarters
12000 East Skelly Drive
Tulsa, OK 74128-2486 USA
918.437.6881

Canada Service Center
919 Matheson Blvd. East
Mississauga, Ontario
CANADA L4W 2R7
905.629.1614

www.lowrance.com

Customer Service:

Weekdays:

800.324.1356 (continental USA)
800.661.3983 (Canada)

Anytime:

www.lowrance.com/support
Self-service product answers and services

Parts/Accessories:

Weekdays:

800.324.1356 (continental USA)
800.661.3983 (Canada)

Anytime:

www.lei-extras.com

All trademarks are property of their respective owners. Products, features and specifications are the most recent available at the time of printing and are subject to change without notice. Lowrance reserves the right to make changes and improvements in our products periodically without incurring the obligation to install such improvements and changes on equipment or items previously manufactured.
©2008 Navico, Inc.

