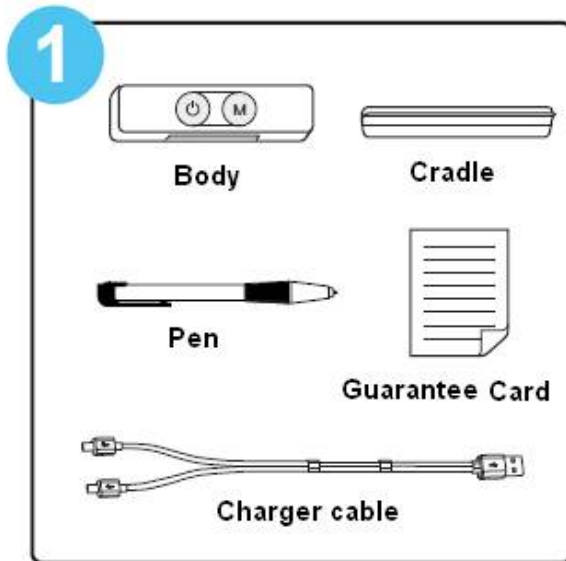


# IPBT-100-01 Manual

PNF

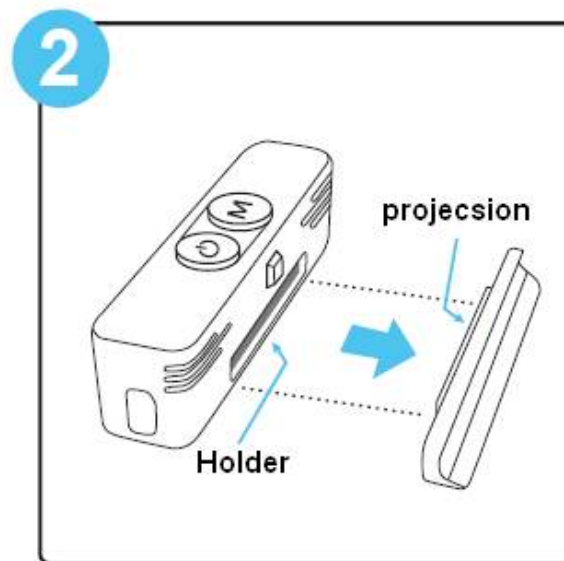
# GALAXYPEN

## Hardware Install Guide



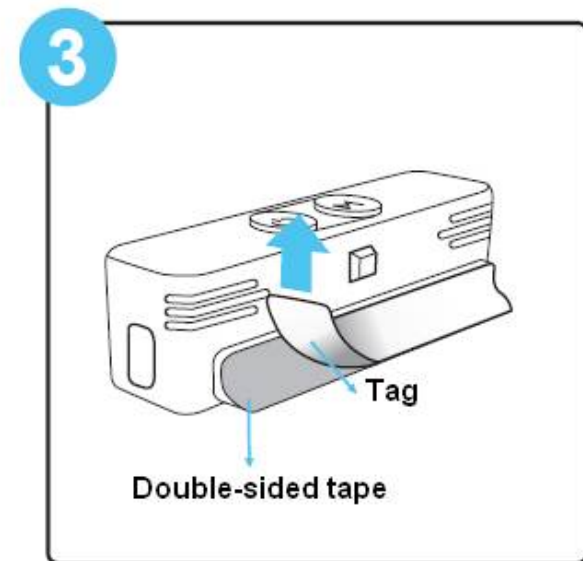
### Product configuration information

- Check the above components
- Components of the picture may differ from actual item due to circumstances and are subject to change.

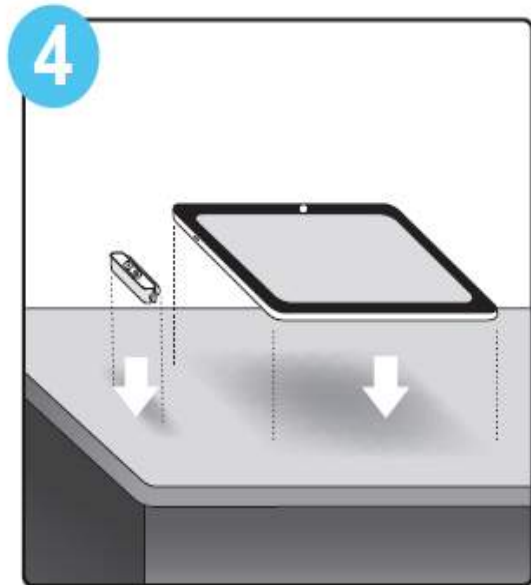


### 〈거치대 부착 준비〉

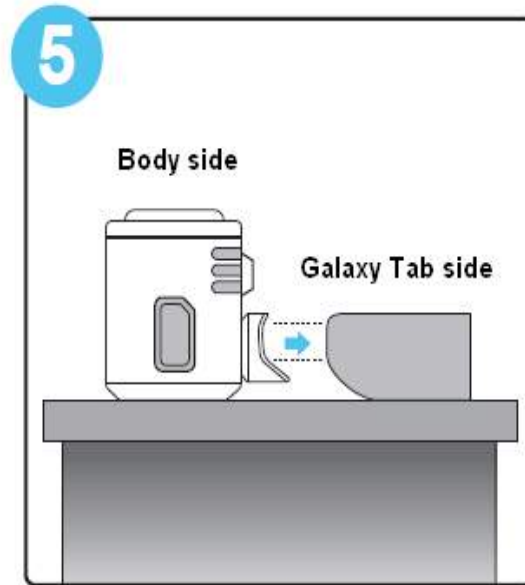
- Will attach to the body cradle.  
Projection in the holder, make sure that a good adhere.



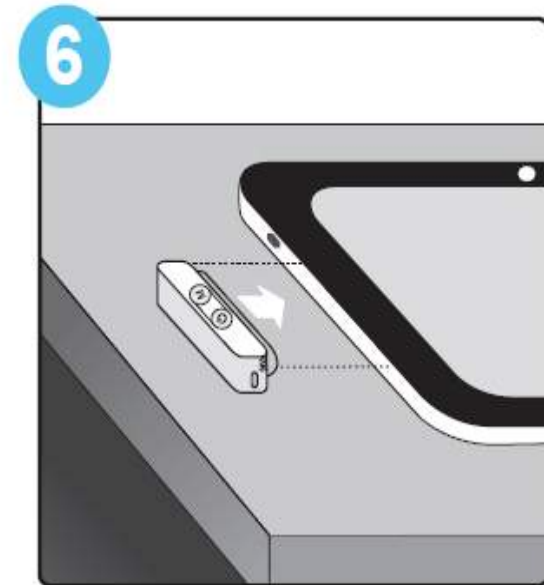
- Remove the double-sided tape tag to cradle



- Galaxy tab attached to the body to the exact place it above the plane.

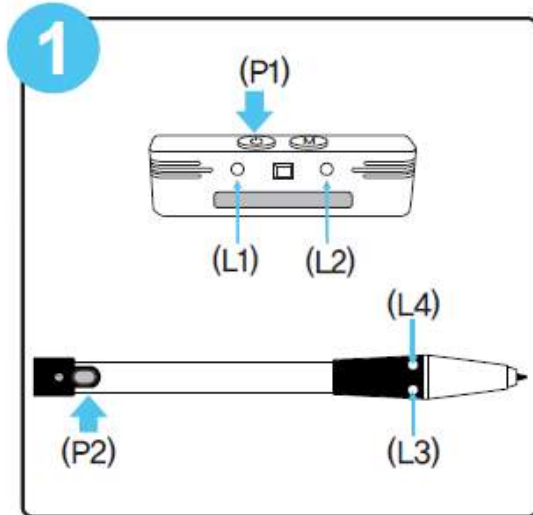


- Galaxy Tab and the cradle attached to the body and place horizontally on the floor.

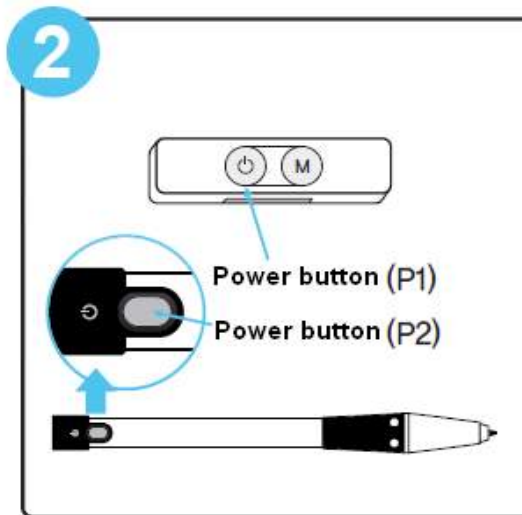


- Galaxy tab attached to the left.

## Name and function

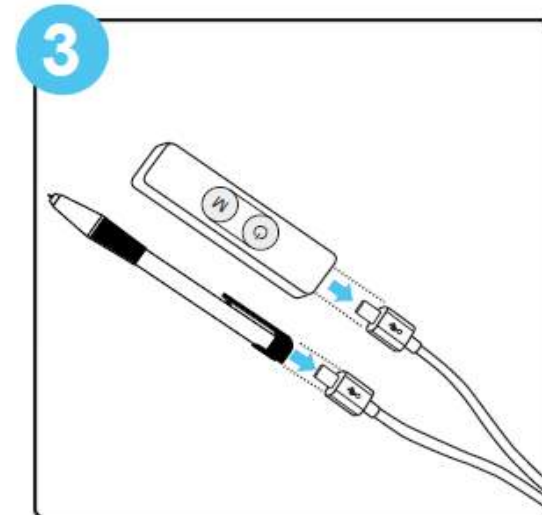


- (P1) : Body Power button
- (P2) : Pen Power button
- (L1) : Body charging LED
- (L2) : Body status indicated LED
- (L3) : Pen chaging LED
- (L4) : Pen status indicated LED



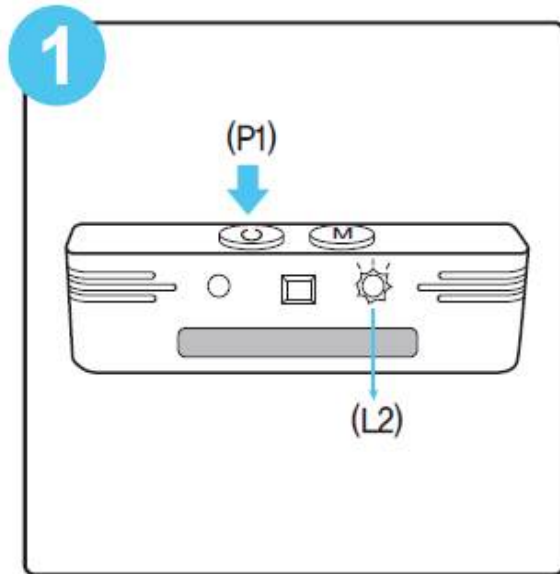
To use

- Upper body power button (P1) pressed for 1 second status display on the front of the LED (L2) is flashing.
- The pen is operated by pressing the power button(P2)

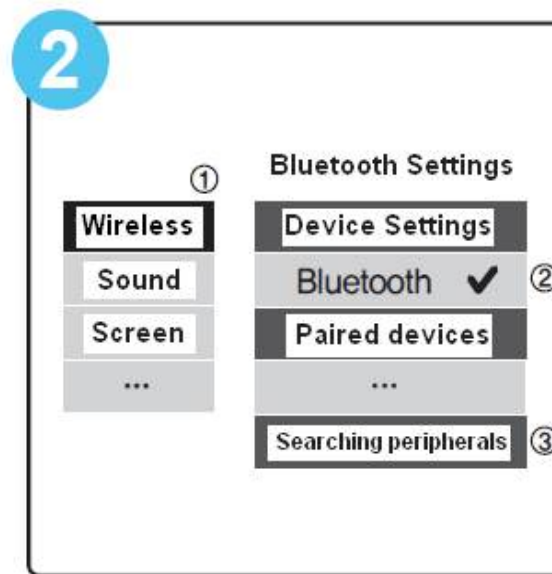


- Pen and Body is charging by the charging cable
- when charging is finished, (L1) and (L2) red LED is turn off

## How to the Bluetooth connection body and the Galaxy tap (Pairing)



- Press the power button(P1) for 3 seconds.
- LED(L2) quick flashes four times per second.



- Gallup tab, select the Settings icon  
 Wireless & network ➔ Bluetooth Settings  
 ➔ Bluetooth device settings make sure  
 that an item is selected ➔ Select search Peripherals
- Bluetooth settings for each device may vary,  
 refer to their documentation.



- Sensing device is detected,  
 please select "PNF-GPEN"
- If you ask for a password to enter  
 the number "0000".

## FCC statement

This equipment has been tested and found to comply with the limits for a class B digital device, pursuant to Part 15 of the FCC Rules. These limits are designed to provide reasonable protection against harmful interference in a residential installation.

This equipment generates uses and can radiate radio frequency energy and, if not installed and used in accordance with the instructions, may cause harmful interference to radio communications. However, there is no guarantee that interference will not occur in a particular installation if this equipment does cause harmful interference to radio or television reception, which can be determined by turning the equipment off and on, the user is encouraged to try to correct the interference by one of the following measures:

- Reorient or relocate the receiving antenna.
- Increase the separation between the equipment and receiver.
- Connect the equipment into an outlet on a circuit different from that to which the receiver is connected.

To assure continued compliance, any changes or modifications not expressly approved by the party responsible for compliance could void the user's authority to operate this equipment. (Example-use only shielded interface cables when connecting to computer or peripheral devices).

This device complies with Part 15 of the FCC Rules. Operation is subject to the following two conditions:

- (1) This device may not cause harmful interference. and
- (2) This device must accept any interference received, including interference that may cause undesired operation.