

Troubleshooting

Symptom	Possible Cause
Light does not turn ON.	<ul style="list-style-type: none"> • Front Accessible Service Switch (FASS™) on Dimmer is pulled out to the OFF position. • Light bulb(s) burned out. • Breaker is OFF or tripped.
Dimmer does not respond to Keypad button press.	<ul style="list-style-type: none"> • Dimmer is out of RF range. • Dimmer not activated to system. • Keypad not activated to system.
Dimmer does not switch from 3-way location.	<ul style="list-style-type: none"> • Miswire—check wiring with 3-way or 4-way diagram on page 1. • Dimmer is in 4-way location—move Dimmer to 3-way location.

FCC Information

Note: This equipment has been tested and found to comply with the limits for a Class B digital device, pursuant to Part 15 of the FCC rules. These limits are designed to provide reasonable protection against harmful interference in a residential installation. This equipment generates, uses and can radiate radio frequency energy and, if not installed and used in accordance with the instructions, may cause harmful interference to radio or television reception. However, there is no guarantee that interference will not occur in a particular installation. If this equipment does cause harmful interference to radio or television reception, which can be determined by turning the equipment off and on, the user is encouraged to try to correct the interference by one or more of the following measures:

- Reorient or relocate the receiving antenna.
- Increase the separation between the equipment and receiver.
- Connect the equipment into an outlet on a circuit different from that to which the receiver is connected.
- Consult the dealer or an experienced radio/TV technician for help.

Caution: Changes or modifications not expressly approved by Lutron Electronics Co. could void the user's authority to operate this equipment. Operation is subject to the following: (1) This device may not cause harmful interference, and (2) this device must accept any interference received, including interference that may cause undesired operation.

Technical Assistance

If you have questions concerning the installation or operation of this product, call the **Lutron Technical Support Center**. Please provide exact model number when calling. +1.800.523.9466 (U.S.A., Canada, and the Caribbean)

Other countries call +1.610.282.3800

Fax +1.610.282.3090

Visit our web site at www.lutron.com

Limited Warranty

(Valid only in the U.S., Canada, Puerto Rico, and the Caribbean.)

Lutron will, at its option, repair or replace any unit that is defective in materials or manufacture within one year after purchase. For warranty service, return unit to place of purchase or mail to Lutron at 7200 Suter Rd., Coopersburg, PA 18036-1299, postage pre-paid.

THIS WARRANTY IS IN LIEU OF ALL OTHER EXPRESS WARRANTIES, AND THE IMPLIED WARRANTY OF MERCHANTABILITY IS LIMITED TO ONE YEAR FROM PURCHASE. THIS WARRANTY DOES NOT COVER THE COST OF INSTALLATION, REMOVAL OR REINSTALLATION, OR DAMAGE RESULTING FROM MISUSE, ABUSE, OR IMPROPER OR INCORRECT REPAIR, OR DAMAGE FROM IMPROPER WIRING OR INSTALLATION. THIS WARRANTY DOES NOT COVER INOPERABILITY RESULTING FROM INTERFERENCE, INCORRECT INSTALLATION, OR ENVIRONMENTAL FACTORS. THIS WARRANTY DOES NOT COVER INCIDENTAL OR CONSEQUENTIAL DAMAGES. LUTRON'S LIABILITY ON ANY CLAIM FOR DAMAGES ARISING OUT OF OR IN CONNECTION WITH THE MANUFACTURE, SALE, INSTALLATION, DELIVERY, OR USE OF THE UNIT SHALL NEVER EXCEED THE PURCHASE PRICE OF THE UNIT.

This warranty gives you specific legal rights, and you may also have other rights which vary from state to state. Some states do not allow limitations on how long an implied warranty lasts, so the above limitation may not apply to you. Some states do not allow the exclusion or limitation of incidental or consequential damages, so the above limitation or exclusion may not apply to you.

These products may be covered under one or more of the following U.S. patents: 4,835,343; 4,954,768; 5,248,919; 5,399,940; 5,637,930; 5,736,965; 5,798,581; 5,838,226; 5,848,054; 5,905,442; 5,982,103; 6,687,487; D353,798 and corresponding foreign patents. U.S. and foreign patents pending.

Lutron, Fassada, and the sunburst logo are registered trademarks and AuroRa is a trademark of Lutron Electronics Co., Inc.
© 2006 Lutron Electronics Co., Inc.

Lutron Electronics Co., Inc.
7200 Suter Road
Coopersburg, PA 18036-1299, U.S.A.
Made and printed in the U.S.A. 2/06 P/N 044-108 Rev. 4

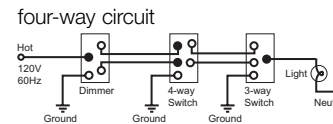
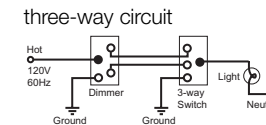
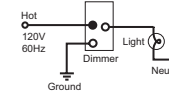
AuroRa™

Installation Instructions for Replacement Dimmer

Read all instructions completely before installation.

Important Notes

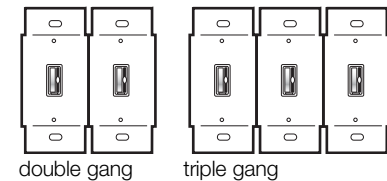
1. Caution: To avoid overheating and possible damage to other equipment, do not use dimmers to control receptacles, fluorescent lighting fixtures, motor-operated or transformer-supplied appliances.
2. Use dimmers with 120V incandescent lighting fixtures only. Do not use with low-voltage transformers.
3. Install in accordance with all national and local electrical codes.
4. When there is no ground wire or a way to connect the wallbox to ground within the wallbox then the NEC® 2002, Article 404-9 allows a dimmer without a grounding connection to be installed as a replacement, as long as a plastic, noncombustible wallplate is used. For this type of installation, cap or remove the green ground wire on the dimmer and use an appropriate wallplate such as Lutron's Fassada® series wallplates.
5. Do not paint dimmers or wallplates.
6. The total wattage of all light bulbs controlled by each dimmer must be between 50 and 600 watts.
7. Dimmers work with most incandescent light bulbs. Dimmers may not work with dioded light bulbs (Sylvania CAPSYLITE DESIGNER 16™ or Philips PAR-16™).
8. Operate system in temperatures between 0 °C (32 °F) and 40 °C (104 °F).
9. Dimmer may feel warm to the touch during normal operation.
10. Recommended wallbox depth is 2 1/2" minimum.
11. single-pole circuit



Incandescent / 120 V Halogen Dimmer AR-6D

120 V~ 50/60 Hz 600 W

12. When combining dimmers in the same wallbox, the dimmer's load capacity must be reduced.



Follow the load capacities in table below for multi-ganged dimmers.

single gang	double gang	triple gang
600W max	500W max	400W max

13. Wire Preparation
Trim or strip wallbox wires to the length indicated by the strip gauge on the back of the dimmer.

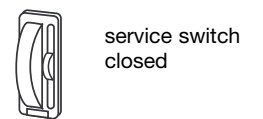


Push-in: Insert wires fully. Use #14 AWG solid copper wire only. For aluminum wire, consult an electrician. DO NOT use stranded or twisted wire.



Screw Terminals: Tighten securely. Screw terminals are for use with solid copper wire only. For aluminum wire, consult an electrician. DO NOT use stranded or twisted wire.

14. Service Switch
Pull service switch out to open position to replace light bulbs. Push service switch in after new bulb is installed.

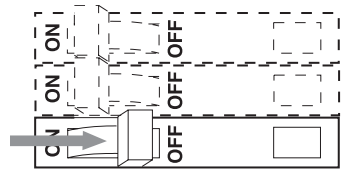


Installing a Replacement Dimmer

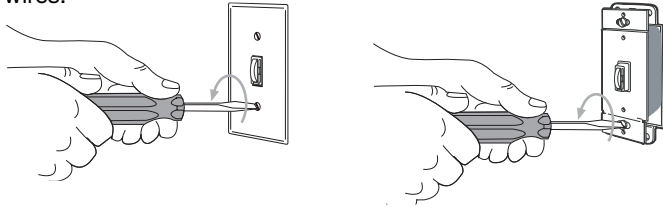
- 1 Turn power off at circuit breaker or remove fuse



WARNING: Power must be turned off for your safety.



- 2 Remove wallplate and existing dimmer. Do not disconnect wires.



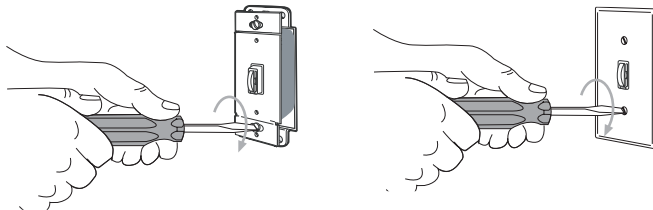
- 3 Uninstall existing dimmer

- Note which wire(s) are connected to each terminal. The replacement dimmer will be installed identically.
- Disconnect the wires from the dimmer.

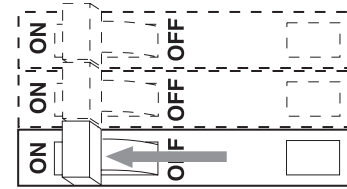
- 4 Install replacement dimmer

Connect the wires to the terminals on the replacement dimmer in the same configuration they were connected to the old dimmer.

- 5 Mount dimmer and replace wallplate

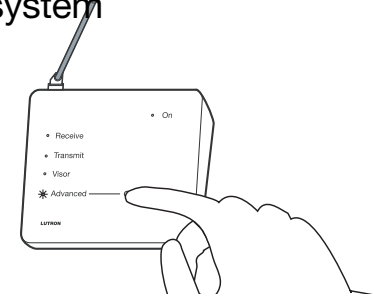


- 6 Turn power on at circuit breaker or replace fuse

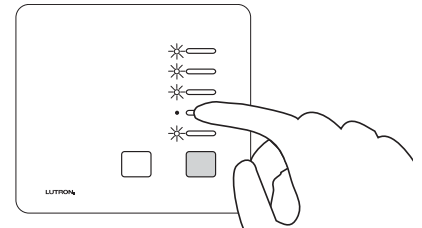


Activating the Replacement Dimmer in your system

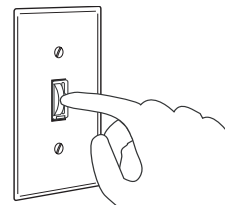
- Enter Device Replacement: Press and hold the Advanced button (on the Central Antenna) for approximately 3 seconds. The Advanced LED will be on solid during the press until the hold is detected. When the hold is detected, the Advanced LED will flash slowly.



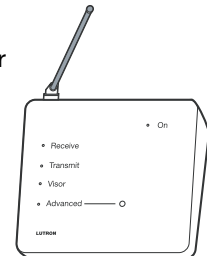
- Dimmers that are already in the System will flash the lights connected to each. The Master Control will have the following LED feedback: LED flashing corresponds to a Dimmer present and LED off corresponds to a Dimmer not present. Press and Release the Master Control button that corresponds to the Dimmer not present.



- Press and hold the button on the Replacement Dimmer for approximately three seconds. Upon successful replacement, the Dimmer will start flashing its lights and the selected Keypad button will flash its LED.



- Exit Device Replacement: Press and hold the Advanced button for approximately 3 seconds. The Advanced LED will turn off and the Dimmer will stop flashing its lights.



- Dimmer now works in System.