

Caséta™ Wireless quick-start guide

Lutron® Smart Bridge, Pico® remote control & In-wall dimmer

Welcome—and thank you for purchasing a Caséta™ Wireless kit. In order to control your lights from an app or remote, you'll need to replace an existing switch with a Caséta™ Wireless in-wall dimmer.

Before you install the dimmer, please watch the installation video at www.casetawireless.com.

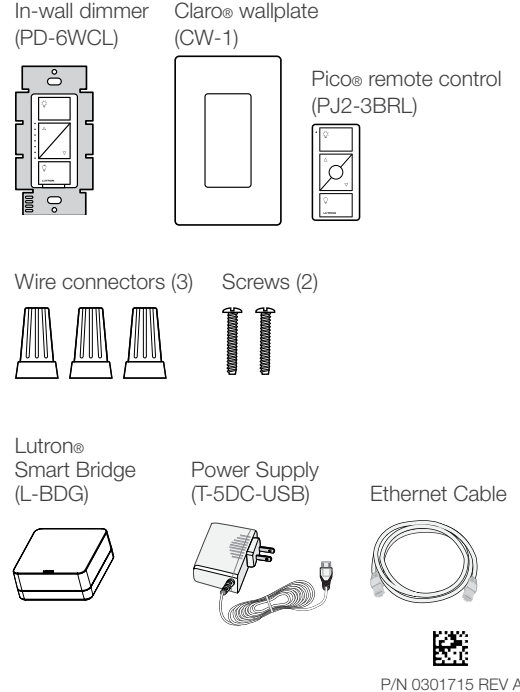
We hope you enjoy the convenience of Caséta™ Wireless!

Double your warranty

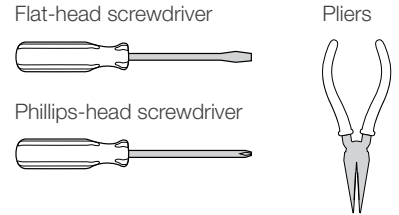
Love Caséta™ Wireless dimmers? Have ideas for making them better? Tell us what you think and we'll extend your warranty by 1 year. www.casetawireless.com/register.



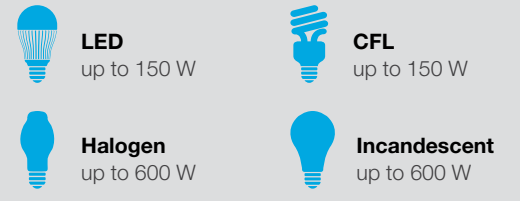
Contents supplied



Tools you'll need



Works with energy efficient dimmable light bulbs:



NOTE: You can mix and match dimmable LED and CFLs, as well as halogen and incandescent light bulbs, with Caséta™ Wireless dimmers.

Dimmable LED and CFL light bulbs vary in their dimming performance. If you're using these bulbs and they flicker or turn off, please visit www.casetawireless.com/support/lowend for information on adjusting the dimmer for best bulb performance.

For a complete list of compatible dimmable LEDs and CFLs, please visit www.casetawireless.com/support/bulblast.

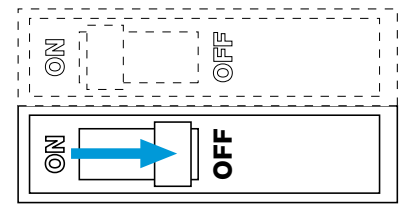
Compatible light bulbs include:

- Cree** BA19-08027OMF-12DE26-1U100 CR6
- Ecosmart** ECS 30 WW FL 75WE 120 ECS 38 WW FL 90WE 120
- Feit** A19/DM/LED PAR38/LEDG5
- Philips** 9290002295
- Sylvania** LED12A19/DIM/O/827 LED21PAR38/DIM/P/930/FL30

Lutron Electronics Co., Inc. 7200 Suter Road Coopersburg, PA 18036-1299, U.S.A.

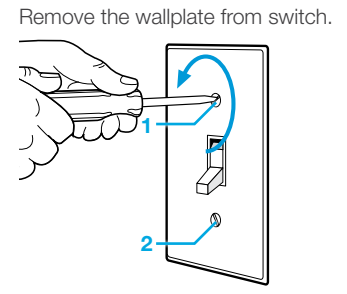
Installing your dimmer Installation for lights with one wall switch (single-pole)

1 Turn power off at circuit breaker!

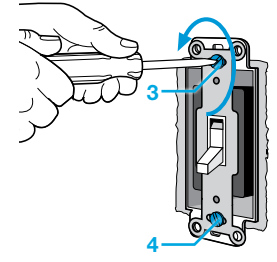


WARNING: SHOCK HAZARD. May result in serious injury or death. Turn off power at circuit breaker or fuse before installing.

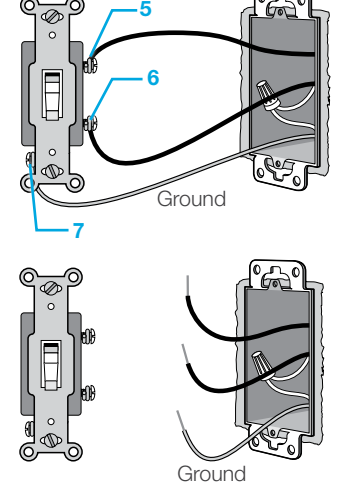
2 Remove existing switch from wall



Remove the switch and pull it away from the wall.

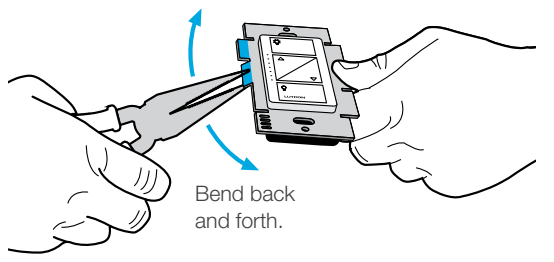


Disconnect all three wires* from the switch.

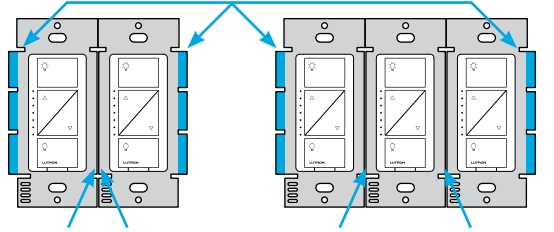


*If your switch has more than 3 wires attached, see "Installing Caséta™ Wireless in a 3-way switch application" video on www.casetawireless.com/support/3-way.

3 Remove side sections (if necessary)



Do not remove outside side sections on dimmers at the end of gang.



Each dimmer has inside side sections removed. Dimmer at middle has all side sections removed.

Important note:

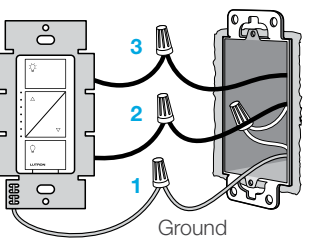
Removing side sections reduces the dimmer's maximum wattage rating. See the chart below for maximum wattage information.

Maximum* wattage derating chart (120 V~ 50/60 Hz)

Side sections removed	None	1 side	2 sides
LED & CFL	150 W	150 W	150 W
or*			
Incandescent & Halogen	600 W	500 W	400 W

*For maximum wattage information when mixing light bulb types see www.casetawireless.com/support/ganging.

4 Connect the dimmer



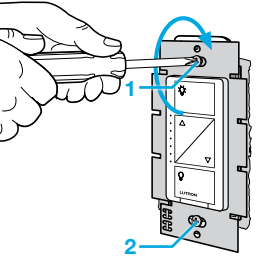
1 Connect the bare copper (or green) "ground" wire from the wallbox to the green wire on the dimmer using a wire connector.

2 Connect either of the remaining wires from the wallbox to either of the remaining wires on the dimmer using a second wire connector.

3 Connect the remaining wire from the wall to the remaining wire on the dimmer using a third wire connector.

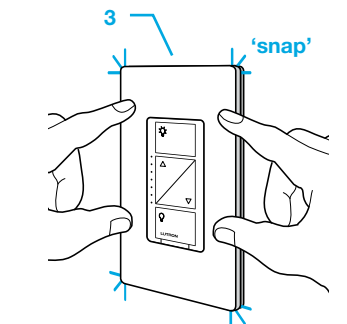
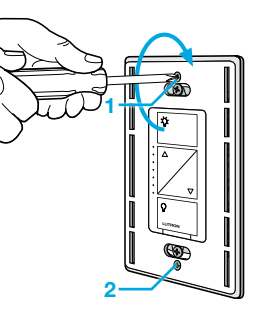
5 Mount the dimmer

Use the screws provided.



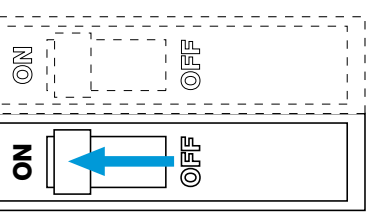
6 Attach the wallplate

Attach the adapter to the dimmer using the screws provided snap on the wallplate.



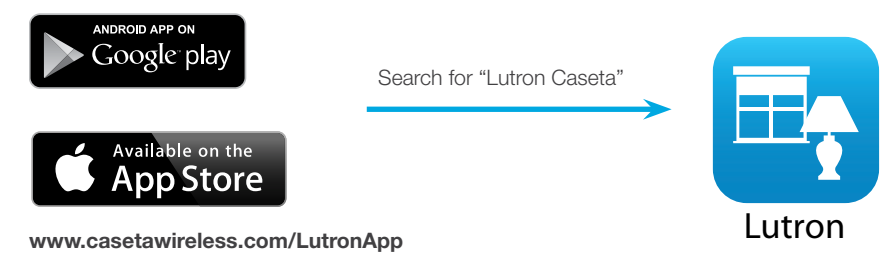
(If you installed the dimmer next to other dimmers or switches, you'll need to install a wallplate with the correct size/number of openings to accommodate all the devices.)

7 Turn power on at circuit breaker

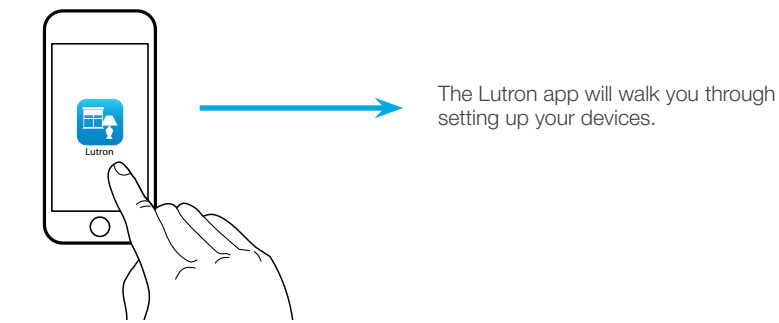


Using your Caséta™ Wireless kit

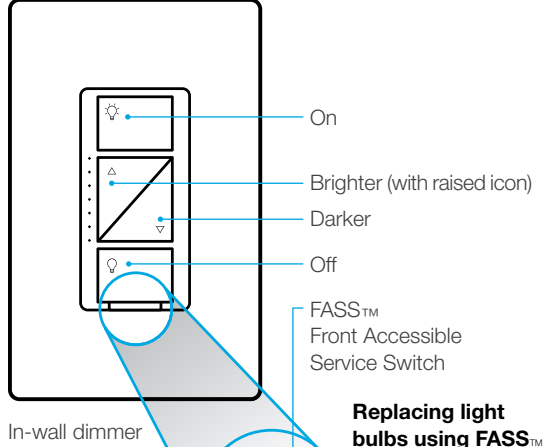
1 Download the Lutron® app



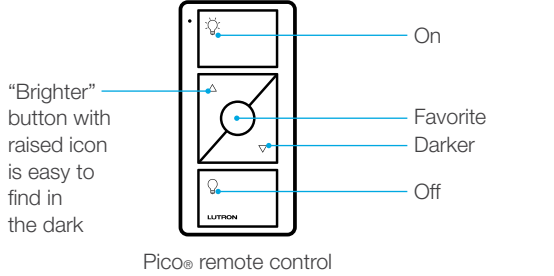
2 Launch the Lutron® app



3 Use the Lutron® app



Replacing light bulbs using FASS™
Pull the FASS™ switch out on the in-wall dimmer to remove power at the light socket.



Important notes:
1. For indoor use only
2. Operate between 32 °F (0 °C) and 104 °F (40 °C)

Device Ratings	Pico® remote control
In-wall dimmer PD-6WCL 120 V~ 50/60 Hz	PJ2-3BRL 3 V== 10 mA (1) CR2032 battery (included)
Lutron® Smart Bridge L-BDG 5 V== 300 mA	Power Supply T-5DC-USB 5 V== 1000 mA

Troubleshooting

Symptoms	Probable cause and action
Light does not turn on or in-wall dimmer LEDs do not light up.	<ul style="list-style-type: none"> Light bulb(s) burned out. Breaker is OFF or tripped. Light not properly installed. Wiring error. FASS™ switch on the dimmer is in the Off position.
Light does not respond to Pico remote control.	<ul style="list-style-type: none"> The dimmer failed to pair with Pico remote control; see <i>Pairing the dimmer and Pico remote control</i>. The dimmer is already at the light level the Pico remote control is sending. The Pico remote control is outside the 30 ft (9 m) operating range. The Pico remote control batteries are low. The Pico remote control batteries are installed incorrectly.
<ul style="list-style-type: none"> Bulbs turn off while being dimmed. Bulbs turn on at high light level but do not turn on at a low light level. Bulbs flicker or flash when dimmed to a low light level. 	<p>Verify bulbs are marked dimmable and visit www.casetawireless.com/support/lowend for information on adjusting the dimmer for best bulb performance.</p>

CAUTION

Use only with permanently installed fixtures with dimmable LED, dimmable CFL, halogen, or incandescent lamps. To avoid overheating and possible damage to other equipment, do not use to control receptacles, motor-driven appliances, or transformer-supplied appliances.

Codes

Install in accordance with all national and local electrical codes.

Grounding

When no "grounding means" exist in wallbox, the National Electrical Code (NEC) allows a control to be installed as a replacement if 1) a nonmetallic, noncombustible faceplate is used with nonmetallic attachment screws or 2) the circuit is protected by a ground fault circuit interrupter (GFCI). When installing a control according to these methods, cap or remove green wire before screwing control into wallbox.

FCC/IC Information

This device complies with part 15 of the FCC Rules and Industry Canada license-exempt RSS standard(s). Operation is subject to the following two conditions: (1) This device may not cause interference, and (2) this device must accept any interference, including interference that may cause undesired operation. Modifications not expressly approved by Lutron Electronics Co., Inc. could void the user's authority to operate this equipment. Note: This equipment has been tested and found to comply with the limits for a Class B digital device, pursuant to part 15 of the FCC Rules. These limits are designed to provide reasonable protection against harmful interference in a residential installation. This equipment generates, uses and can radiate radio frequency energy and, if not installed and used in accordance with the instructions, may cause harmful interference to radio communications. However, there is no guarantee that interference will not occur in a particular installation. If this equipment does cause harmful interference to radio or television reception, which can be determined by turning the equipment off and on, the user is encouraged to try to correct the interference by one or more of the following measures: —Reorient or relocate the receiving antenna. —Increase the separation between the equipment and receiver. —Connect the equipment into an outlet on a circuit different from that to which the receiver is connected. —Consult the dealer or an experienced radio/TV technician for help.

Warranty

For warranty information, please visit www.casetawireless.com/warranty.

Lutron, Q, Claro, and Pico are registered trademarks and FASS and Caséta are trademarks of Lutron Electronics Co., Inc. NEC is a registered trademark of the National Fire Protection Association, Quincy, Massachusetts. Google and the Google logo are registered trademarks of Google Inc., used with permission. Apple is a trademark of Apple Inc., registered in the U.S. and other countries. ©2014 Lutron Electronics Co., Inc.

Go to www.casetawireless.com/support for additional troubleshooting suggestions.