

Dimmers	LED	Incand./ Halogen	Hi-lume® A-Series LTE LED Drivers
GTJ-150	150 W	600 W	350 W 8 maximum
GT-150	150 W		
GT-250M	250 W		
GTJ-250M	250W		
RRT-25CL	250 W		
HQRT-25CL	250 W		
Companion dimmers			
GT-AD-S	For use with HQRT-25CL and RRT-25CL		
GT-AD	For use with all other models		

## Compatible LEDs

Cree®: 499485; CR6X-PP2  
Philips®: 426122(9290002330)(822580)(bc=046677426125)  
EcoSmart®: ECO-575L  
Sylvania®: 78390 (LED8R20/DIM/SE/830/RP)  
FEIT (Utilitech)®: PAR38/LEDG5

For a complete list of compatible LEDs, please visit: [www.lutron.com/LED](http://www.lutron.com/LED)

## Important Notes

- CAUTION: To avoid overheating and possible damage to other equipment, do not use to control receptacles, fluorescent lighting fixtures, motor-operated appliances, transformer-supplied appliances, or electronic low-voltage lighting fixtures.**
- Install in accordance with all national and local electrical codes.
- When no "grounding means" exist in wallbox, the NEC® allows dimmer without a grounding connection to be installed as a replacement if 1) a nonmetallic, noncombustible faceplate is used with nonmetallic attachment screws or 2) the circuit is protected by a ground fault circuit interrupter (GFCI). For this type of installation, cap or remove the green ground wire on the dimmer, and use an appropriate wallplate, such as a Lutron® GrafikT™ series wallplate.
- GrafikT™ dimmers are not compatible with standard 3-way switches. Use only with companion dimmers (GT-AD-S or GT-AD).
- Companion dimmers (GT-AD-S or GT-AD) cannot be used individually but must be used in conjunction with a GrafikT™ dimmer in a multi-location application.
- In any multi-location circuit, use only one GrafikT™ dimmer with up to four companion dimmers.
- GrafikT™ dimmer settings such as Light Bar Intensity and Speaker On/Off can be modified using Advanced Programming Mode. For instructions and information on how to use Advanced Programming Mode, please visit [www.lutron.com/grafikT](http://www.lutron.com/grafikT) or call Lutron® Technical Support at 1.800.523.9466.

## Dimming Operation

**Set High-End Trim:**

- Press and hold top of light bar (approximately 5 seconds) until Toggle button flashes orange.
- Slide finger on light bar to adjust to desired brightness.
- To exit, press and hold the Toggle button (approximately 5 seconds) until the Toggle button stops flashing.

**Set Low-End Trim:**

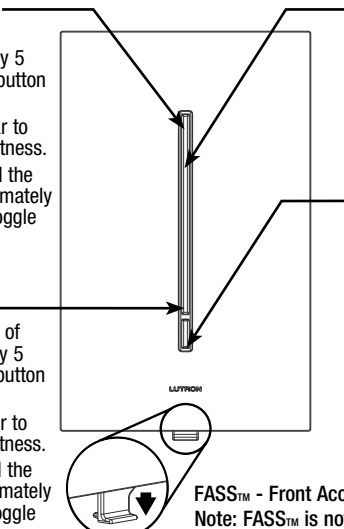
- Press and hold bottom of light bar (approximately 5 seconds) until Toggle button flashes orange.
- Slide finger on light bar to adjust to desired brightness.
- To exit, press and hold the Toggle button (approximately 5 seconds) until the Toggle button stops flashing.

**Adjust**

- Touch to set lights to desired level
- Slide to adjust light level

**Toggle**

- Touch to turn Off or to turn On to previous light level
- Toggle button is white when On, orange when Off

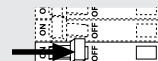


**FASS™ - Front Accessible Service Switch**  
Note: FASS™ is not available on companion dimmers.

**IMPORTANT NOTICE: FASS™ - Front Accessible Service Switch**  
To replace bulb(s), power may be conveniently removed by pulling the FASS™ down on the dimmer. After replacing bulb(s), push the FASS™ back up fully to restore power to the dimmer.  
For any procedure, other than routine lamp replacement, power must be turned OFF at the main electrical panel.

## Installation

- Turn OFF power at circuit breaker.

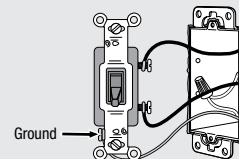


**WARNING!** Shock Hazard. May result in serious injury or death. Turn off power at circuit breaker before installing the unit.

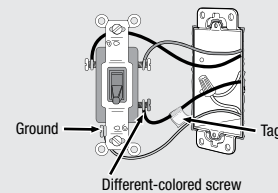
- Remove wallplate and the switch mounting screws. Leaving all wires attached, carefully pull the switch out from the wall.

- Identify switch type.

**Single-pole** – The switch will have insulated wires connected to two screws of the same color plus a green ground screw.

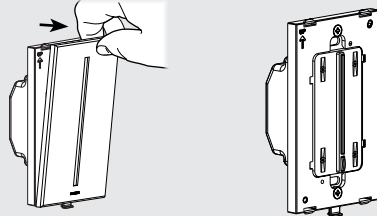


**Multi-location** – 3-way switches will have insulated wires connected to three screws plus a green ground screw. One of the wires is connected to a screw of a different color (not green) or labeled COMMON. Tag this wire.



- The switch may have two wires attached to the same screw. Tape these two wires together before disconnecting. Proceed to disconnect the wires from the switch.

- Remove wallplate from the GrafikT™ dimmer and any companion dimmer, but leave wallplate adapter connected.



- Install dimmer and/or companion dimmer.

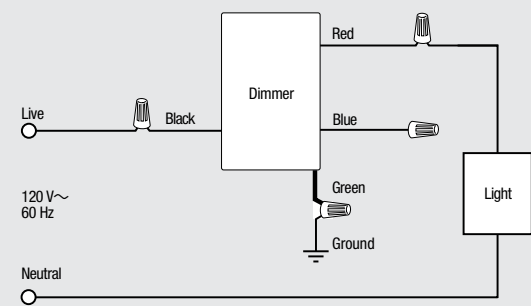
**IMPORTANT** Wire connectors provided are for copper wire only. For aluminum wire, consult an electrician.

- 6a Single-pole** - Switch will be replaced by a dimmer.

Connect the **green** ground wire on the dimmer to the **green** or **bare** ground wire in the wallbox. (See **Important Note 3** at left.)

Connect the **black** wire on the dimmer to one of the wires removed from the switch. If you had taped together two wires (see step 4), connect both wires to the **black** wire on the dimmer and remove the tape.

Connect the **red** wire on the dimmer to the other wire removed from the switch.



**IMPORTANT** Cap the blue wire with the blue connector. This wire does not get connected.

- 6b Multi-location** - Lights can be dimmed from multiple locations.

One location will be replaced by a GrafikT™ dimmer and the other location(s) by a GrafikT™ companion dimmer. The dimmer can be wired on the line-side or the load-side.

### Dimmer

Connect the **green** ground wire on the dimmer to the **green** or **bare** ground wire in the wallbox (See **Important Note 3** at left).

Connect tagged wire removed from the switch to the **black** wire on the dimmer.

Connect one of the remaining wires removed from switch to the **red** wire on the dimmer.

Connect the remaining wire removed from the switch to the **blue** wire on the dimmer.

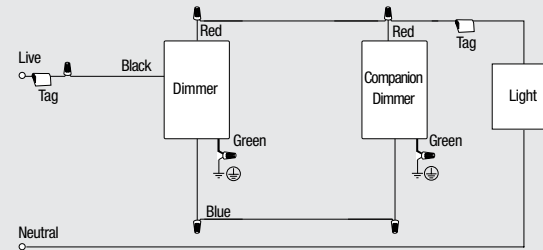
### Companion Dimmer

Connect the **green** wire on the dimmer to the **green** or **bare** ground wire in the wallbox (See **Important Note 3** at left).

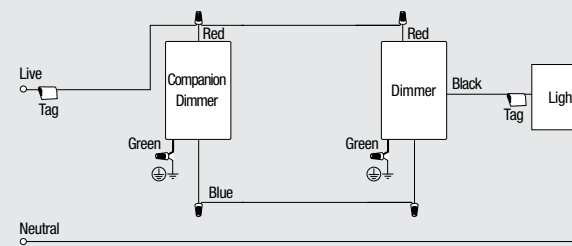
Connect the same color wire connected to the **red** wire on the dimmer to the **red** wire on the companion dimmer, along with the tagged wire.

Connect the remaining wire to the **blue** wire on the companion dimmer.

### Dimmer Line-Side



### Dimmer Load-Side



- Carefully push wires into the wallbox. Install dimmer/companion dimmer(s) and snap on wallplate.



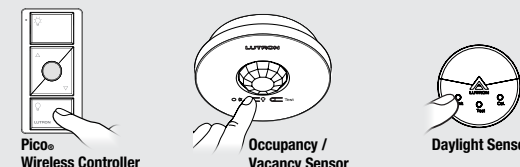
- Turn ON power at circuit breaker.

- If needed, set low-end trim. See **Dimming Operation** section (at lower left) for details.

- Associate GrafikT™ dimmer to Clear Connect® devices (GTJ- models only).

Press and hold the Toggle button on the GrafikT™ dimmer for approximately 6 seconds. Once all of the light bar LEDs begin to flash, release the Toggle button.

Press and hold the appropriate button on the device (see pictures below) for approximately 6 seconds.



Once the dimmer associates the recently added devices, the LEDs and load will flash 3 times and the GrafikT™ dimmer will exit set-up mode.

## Ganging and Derating

When combining controls in the same wallbox, derating is required. No derating is required for companion dimmers.

Control <sup>1</sup>	Load Type	Not Ganged	End of Gang	Middle of Gang
GT-150	LED	150 W	150 W	150 W
GTJ-150	Incand./ Halogen	600 W	500 W	400 W
GT-250M	LED	250 W	250 W	250 W
GTJ-250M	Incand./ Halogen	600 W	500 W	400 W
RRT-25CL	Lutron® Hi-lume® A-Series LTE LED Driver	350 W, 8 drivers max	350 W, 8 drivers max	350 W, 8 drivers max
HQRT-25CL				

<sup>1</sup> Designed for use with permanently installed LED, incandescent, or tungsten halogen only.

## Minimum Load Chart

Application	Number of Companion Dimmers	Load Type	
		LED <sup>1</sup>	Incandescent/Halogen
Single-pole	0	2 LED lamps	40 W
Multi-location	1	3 LED lamps	80 W
Multi-location	2	4 LED lamps	120 W
Multi-location	3	5 LED lamps	160 W
Multi-location	4	6 LED lamps	200 W

<sup>1</sup> For performance or compatibility information, Lutron recommends visiting our website [www.lutron.com/LED](http://www.lutron.com/LED), which is constantly being updated.

## Troubleshooting

Symptom	Possible Cause
Light does not turn On and no LEDs turn On.	<ul style="list-style-type: none"> <li>The FASS™ on the dimmer is pulled down to the Off position.</li> <li>Light bulb(s) burned out.</li> <li>Breaker is OFF or tripped.</li> <li>Dimmer is miswired. Check wiring.</li> </ul>
Unit is non-responsive.	<ul style="list-style-type: none"> <li>Cycle power to unit by pulling the FASS™ down and back up to fully restore power.</li> </ul>
Light turns On and dimmer works, but companion dimmer does not work.	<ul style="list-style-type: none"> <li>Wire connected to the blue wire on the dimmer is not the same wire connected to the blue wire on the companion dimmer. Check wiring.</li> <li>Wire connected to the red wire on the dimmer is not the same wire connected to the red wire on the companion dimmer. Check wiring.</li> </ul>
Lights repeatedly turn On and Off.	<ul style="list-style-type: none"> <li>Load is less than the minimum load. See the <b>Minimum Load Chart</b> to determine the acceptable minimum load.</li> </ul>
Lights are flickering or exhibiting poor dimming range.	<ul style="list-style-type: none"> <li>Set low-end trim. See <b>Dimming Operation</b> for details.</li> </ul>

## Additional Information

For warranty details, please visit:  
[www.lutron.com/warranty](http://www.lutron.com/warranty)

For FCC/IC information, please visit:  
[www.lutron.com/fcc-ic](http://www.lutron.com/fcc-ic)

Lutron is a registered trademark and FASS and GrafikT are trademarks of Lutron Electronics Co., Inc. NEC is a registered trademark of the National Fire Protection Association, Quincy, Massachusetts.  
© 2014 Lutron Electronics Co., Inc.

## Technical Assistance

1.800.523.9466 U.S.A. | Canada | Caribbean  
+1.888.235.2910 Mexico  
+1.610.282.3800 Others

[www.lutron.com](http://www.lutron.com)