

Caséta™ Wireless quick-start guide

In-wall dimmer

Welcome—and thank you for purchasing a Caséta™ Wireless in-wall dimmer. In order to control your lights from an app or remote, you'll need to replace an existing switch with a Caséta™ Wireless in-wall dimmer.

Before you install the dimmer, please watch the installation video at www.casetawireless.com/support

We hope you enjoy the convenience of Caséta™ Wireless!

Double your warranty

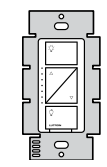
Love Caséta™ Wireless dimmers? Have ideas for making them better? Tell us what you think and we'll extend your warranty by 1 year.

www.casetawireless.com/register

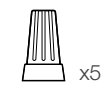


Contents supplied

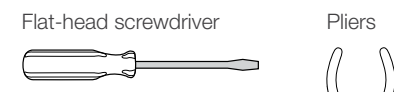
In-wall dimmer (PD-10NXD)



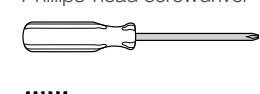
Wire connectors



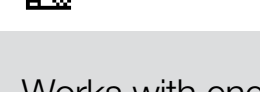
Screws



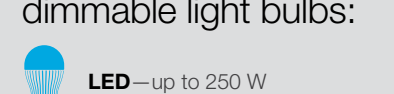
Flat-head screwdriver



Phillips-head screwdriver



Pliers



Incandescent/Halogen—up to 1000 W

MLV—up to 1000 W

LED—up to 250 W

CFL—up to 250 W

NOTE: You can mix and match dimmable LED and CFLs, as well as halogen and incandescent light bulbs, with Caséta™ Wireless dimmers.

Dimmable LED and CFL light bulbs vary in their dimming performance. If you're using these bulbs and they flicker or turn off, please visit www.casetawireless.com/lowend for information on adjusting the dimmer for best bulb performance.

For a complete list of compatible dimmable LEDs and CFLs, please visit www.casetawireless.com/bulblast

Compatible light bulbs include:

Cree®
BA19-08027OMF-12DE26-1U100
CR6-575L

EcoSmart®
ECS BR30 W27 FL 120
ECS 20 WW FL 50WE 120

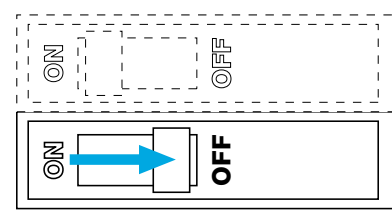
Feit®
A19/OM/LED

Philips®
9290002295

Sylvania®
LED12A19/DIM/O/827
LED21PAR38/DIM/P/930/FL30

Installing your dimmer Installation for lights with one wall switch (single pole)

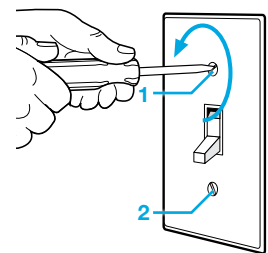
1 Turn power off at circuit breaker!



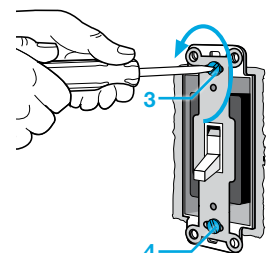
WARNING: SHOCK HAZARD
May result in serious injury or death. Turn off power at circuit breaker or fuse before installing.

2 Remove existing switch from wall

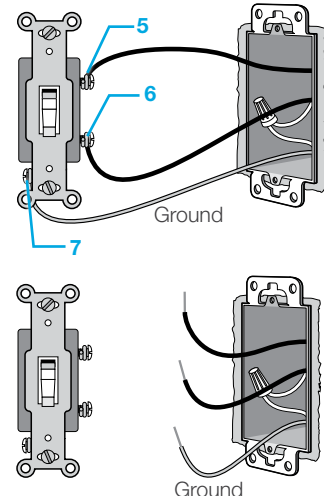
Remove the wallplate from switch.



Remove the switch and pull it away from the wall.

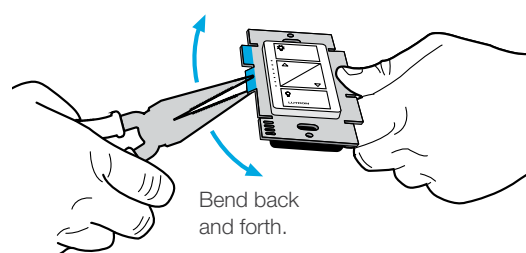


Disconnect all three wires* from the switch.

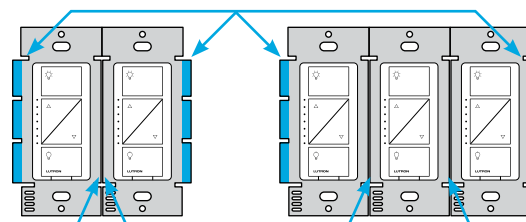


*If your switch has more than 3 wires attached, see "Installing Caséta Wireless in a 3-way switch application" video at www.casetawireless.com/3way

3 Remove side sections (if necessary)



Do not remove outside side sections on dimmers at the end of gang.



Each dimmer has inside side sections removed.

Dimmer at middle has all side sections removed.

Important note:

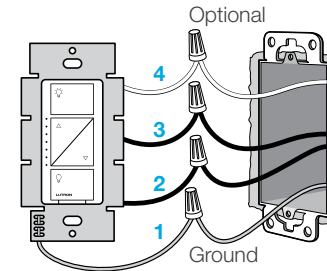
Removing side sections reduces the dimmer's maximum wattage rating. See the chart below for maximum wattage information.

Maximum* wattage derating chart (120 V ~ 50/60 Hz)

Side sections removed	None	1 side	2 sides
LED & CFL	250 W	250 W	250 W
or*			
Incandescent, Halogen, & MLV	1000 W	800 W	600 W

*For maximum wattage information when mixing light bulb types see www.casetawireless.com/ganging

4 Connect the dimmer



1 Connect the bare copper (or green) "ground" wire from the wallbox to the green wire on the dimmer using a wire connector.

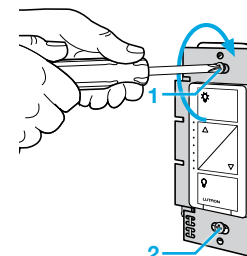
2 Connect either of the remaining wires from the wallbox to either of the remaining wires on the dimmer using a second wire connector.

3 Connect the remaining wire from the wall to the remaining wire on the dimmer using a third wire connector.

4 If available, connect the white neutral wire. Required for: MLV loads, LED drivers, PHPM-PA, PHPM-3F, GRX-TVI.

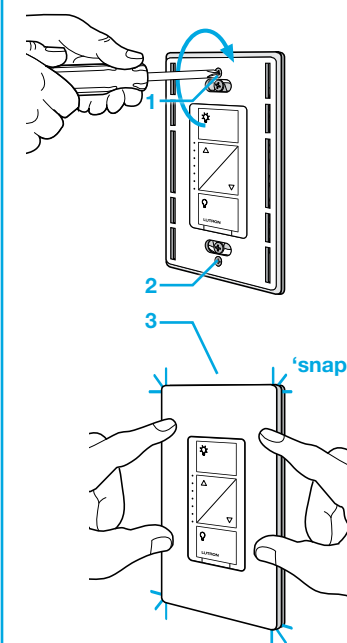
5 Mount the dimmer

Use the screws provided.



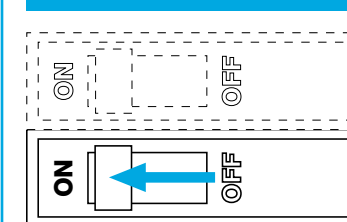
6 Attach the wallplate

Attach the adapter to the dimmer using the screws provided and snap on the wallplate.



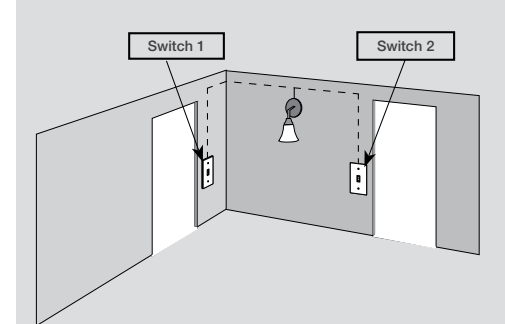
(If you installed the dimmer next to other dimmers or switches, you'll need to install a wallplate with the correct size/number of openings to accommodate all the devices.)

7 Turn power on at circuit breaker



Important Note: 3-Way

If you have more than one switch controlling the light, this is called a 3-way installation. You will need to buy PJ2-WALL-WH-L01.



Please visit www.casetawireless.com/3way for more details.

Works with energy efficient dimmable light bulbs:

- LED—up to 250 W
- CFL—up to 250 W
- Incandescent/Halogen—up to 1000 W
- MLV—up to 1000 W

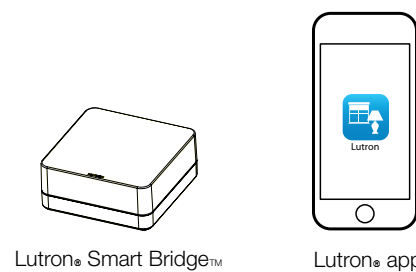
Using your Caséta™ Wireless kit (sold separately)

With a smartphone or tablet (Bridge required, sold separately)

The Caséta™ Wireless dimmer can be controlled from a smartphone when used with the Lutron® Smart Bridge™.

If you are using the dimmer and remote control with the Lutron® Smart Bridge™, follow the instructions below.

Note: If you are using the dimmer and remote control with another manufacturer's bridge, please refer to that manufacturer's instructions for set-up.



1 Download the Lutron® app



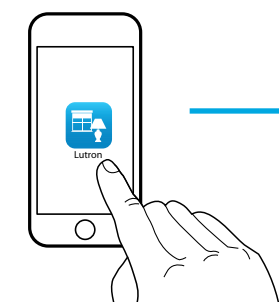
Search for "Lutron Caseta"



www.casetawireless.com/LutronApp

Apple is a trademark of Apple Inc., registered in the U.S. and other countries. App Store is a service mark of Apple Inc.

2 Launch the Lutron® app



The Lutron® app will walk you through setting up your devices.

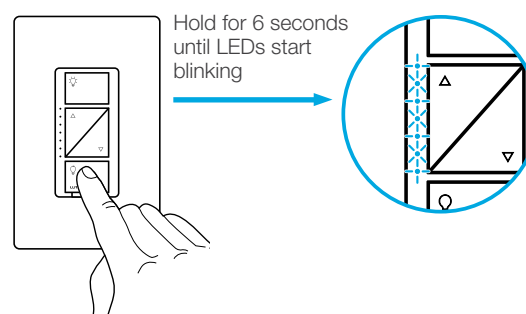
3 Use the Lutron® app to complete ALL remaining steps

- Add devices
 - Pico® remotes
 - Dimmers
 - Shades
- Control three ways
- Schedule your lights
- Connect while away

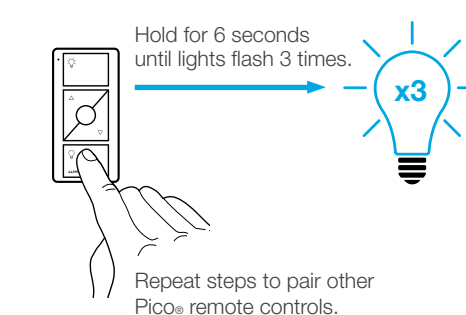
Without a smartphone or tablet (Bridge not required)

Pairing the dimmer and Pico® remote control

1 Press and hold "off" button on dimmer



2 Press and hold "off" button on remote

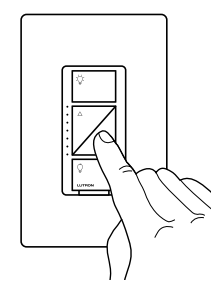


For advanced features, tips for using Caséta™ Wireless dimmers with CFLs and LEDs, the complete Caséta™ Wireless product line, and more, please visit www.casetawireless.com/features

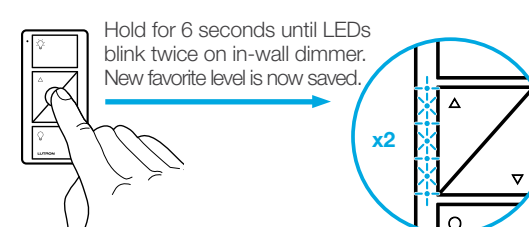
Changing the favorite light level on the Pico® remote control (sold separately)

You can use the round "favorite" button on the Pico® remote control to recall a favorite light level. We've set it to 50%, but you can change it to any level you like.

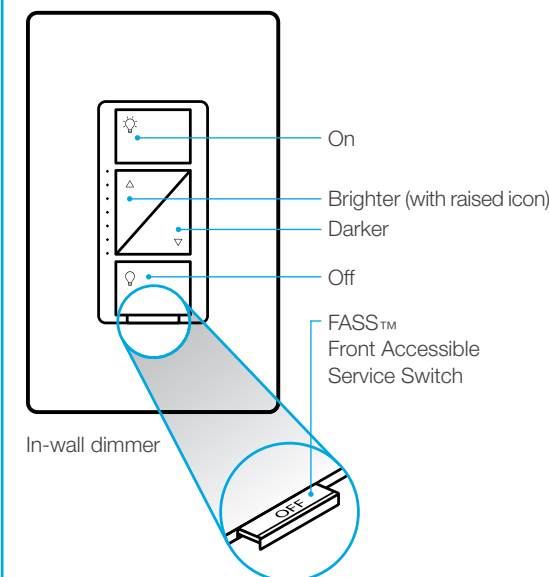
3 Set desired light level on dimmer



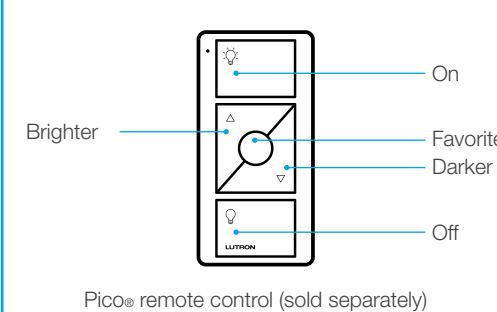
4 Press and hold "favorite" button on remote



Using your controls



Replacing light bulbs using FASS™
Pull the FASS™ switch out on the in-wall dimmer to remove power at the light socket.



Important notes:

- For indoor use only.
- Operate between 32 F (0 C) and 104 F (40 C).

Device Ratings

In-wall dimmer
PD-6WCL
120 V ~ 50/60 Hz

CAUTION

Use only with permanently installed fixtures with dimmable LED, dimmable CFL, halogen, or incandescent lamps. To avoid overheating and possible damage to other equipment, do not use to control receptacles, motor-driven appliances, or transformer-supplied appliances.

Codes

Install in accordance with all national and local electrical codes.

Grounding

When no "grounding means" exist in wallbox, the National Electrical Code (NEC) allows a control to be installed as a replacement if 1) a nonmetallic, noncombustible faceplate is used with nonmetallic attachment screws or 2) the circuit is protected by a ground fault circuit interrupter (GFCI). When installing a control according to these methods, cap or remove green wire before screwing control into wallbox.

FCC/IC Information

This device complies with part 15 of the FCC Rules and Industry Canada license-exempt RSS standard(s). Operation is subject to the following two conditions: (1) This device may not cause interference, and (2) this device must accept any interference, including interference that may cause undesired operation. Modifications not expressly approved by Lutron Electronics Co., Inc. could void the user's authority to operate this equipment. Note: This equipment has been tested and found to comply with the limits for a Class B digital device, pursuant to part 15 of the FCC Rules. These limits are designed to provide reasonable protection against harmful interference in a residential installation. This equipment generates, uses and can radiate radio frequency energy and, if not installed and used in accordance with the instructions, may cause harmful interference to radio communications. However, there is no guarantee that interference will not occur in a particular installation. If this equipment does cause harmful interference to radio or television reception, which can be determined by turning the equipment off and on, the user is encouraged to try to correct the interference by one or more of the following measures: —Reorient or relocate the receiving antenna. —Increase the separation between the equipment and receiver. —Connect the equipment into an outlet on a circuit different from that to which the receiver is connected. —Consult the dealer or an experienced radio/TV technician for help.

Warranty

For warranty information, please visit www.casetawireless.com/warranty

Troubleshooting

Symptoms	Probable cause and action
Light does not turn on or in-wall dimmer LEDs do not light up.	<ul style="list-style-type: none"> Breaker is OFF or tripped. Light not properly installed. Wiring error. FASS™ switch on the dimmer is in the Off position.
Light does not respond to Pico® remote control.	<ul style="list-style-type: none"> The dimmer failed to pair with Pico® remote control; see <i>Pairing the dimmer and Pico® remote control</i>. The dimmer is already at the light level the Pico® remote control is sending. The Pico® remote control is outside the 30 ft (9 m) operating range. The Pico® remote control battery is low. The Pico® remote control battery is installed incorrectly.
Bulbs turn off while being dimmed.	Verify bulbs are marked dimmable and visit www.casetawireless.com/lowend for information on adjusting the dimmer for best bulb performance.
Bulbs turn on at high light level but do not turn on at a low light level.	
Bulbs flicker or flash when dimmed to a low light level.	

Go to www.casetawireless.com/support for additional troubleshooting suggestions.