

Caséta Wireless quick-start guide

In-wall fan control

Welcome—and thank you for purchasing a Caséta Wireless in-wall fan control. In order to control your ceiling fan from an app or remote, you'll need to replace an existing switch with a Caséta Wireless in-wall fan control.

Before you install the fan control, please read quick-start guide and watch the installation video at www.casetawireless.com/support

We hope you enjoy the convenience of Caséta Wireless!

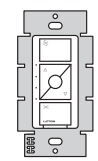
Double your warranty

Love Caséta Wireless controls? Have ideas for making them better? Tell us what you think and we'll extend your warranty by 1 year. www.casetawireless.com/register

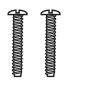
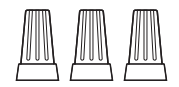


Contents supplied

In-wall fan control (PD-FSQN)



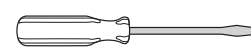
Wire connectors (3) Screws (2)



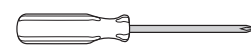
Tools you'll need

Flat-head screwdriver

Pliers



Phillips-head screwdriver



P/N 0301907 REV A

Works with one paddle-type ceiling fan:

Fan—up to 1.5 A

IMPORTANT NOTES

- Use to control one paddle-type ceiling fan (permanent split-capacitor).
- Use the ceiling fan's pull chain to set its speed to the highest setting.
- Do not use to control fans that use shaded-pole motors (i.e. bath exhaust fans).
- Do not use to control fans that have integrated fan speed controls (i.e. fans that have a remote control), unless the integrated control is removed from the ceiling fan.
- Do not connect to any other motor-operated appliance or to any lighting load type.
- Do not use to control a fan lighting load (i.e. light kit).
- Do not use to control DC motor fans.

Installing your fan control

Installation for ceiling fans with one wall switch (single pole)

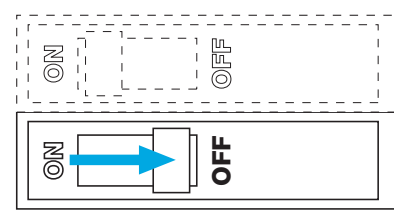
1 Install the fan

Install the fan according to the manufacturer's instructions and ensure proper operation.

2 Set the fan speed and the lights

Set the fan to the **highest speed** using the pull chains.

3 Turn power off at circuit breaker!



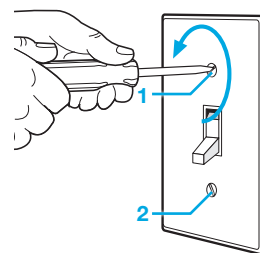
WARNING: SHOCK HAZARD. May result in serious injury or death. Turn off power at circuit breaker or fuse before installing.

Important note:

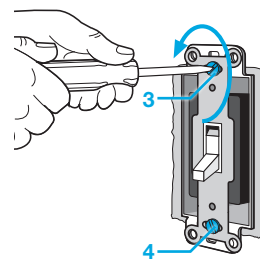
Some fans have one wall switch, while others have two or more wall switches. We've included instructions for fans with one wall switch (called a single pole). If your fan has more than one switch (called a 3-way), please visit www.casetawireless.com/3way for complete installation instructions and how-to videos.

4 Remove existing switch from wall

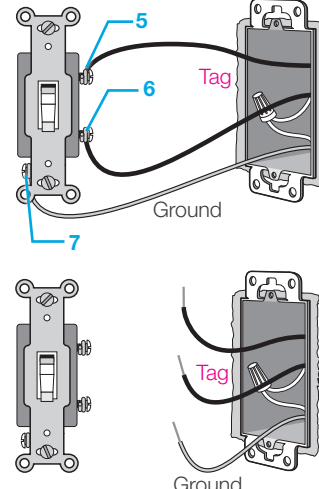
Remove the wallplate from switch.



Remove the switch and pull it away from the wall.

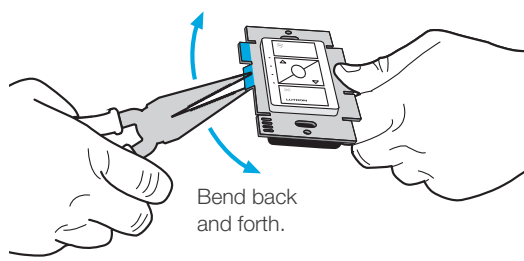


Place tag on load wire. Disconnect all three wires* from the switch.

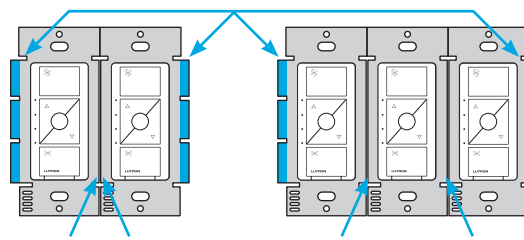


*If your switch has more than 3 wires attached, see "Installing Caséta Wireless in a 3-way switch application" video at www.casetawireless.com/3way

5 Remove side sections (if necessary)



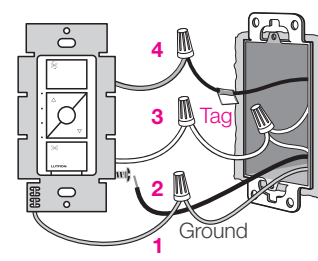
Do not remove outside side sections on the controls at the end of gang.



Each control has inside side sections removed.

Control at middle has all side sections removed.

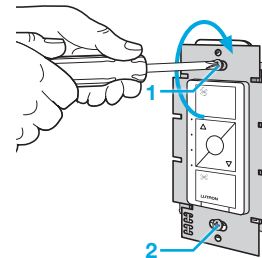
6 Connect the fan control



- Connect the bare copper (or green) "ground" wire from the wallbox to the green wire on the fan control using a wire connector.
- Wrap line/hot wire around screw terminal. Tighten securely to 5 in-lb (0.55 N•m)
- Connect the neutral wire from the wallbox to the white wire on the fan control using a wire connector.
- Connect the load wire from the wallbox to the yellow wire on the fan control using a wire connector.

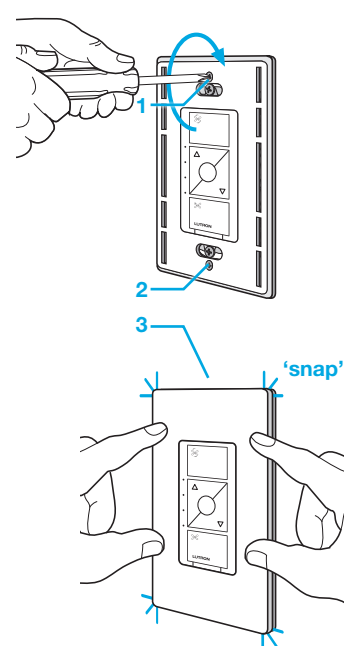
7 Mount the fan control

Use the screws provided.



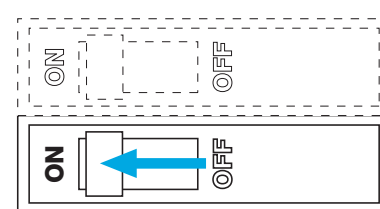
8 Attach the wallplate

Attach the adapter to the fan control using the screws provided and snap on the wallplate.



(If you installed the control next to other dimmers, switches, or controls, you'll need to install a wallplate with the correct size/number of openings to accommodate all the devices)

9 Turn power on at circuit breaker



CAUTION

Use only with permanently installed ceiling fans. To avoid overheating and possible damage to other equipment, do not use to control receptacles, motor-driven appliances, or transformer-supplied appliances.

Codes

Install in accordance with all national and local electrical codes.

Grounding

When no "grounding means" exist in wallbox, the National Electrical Code (NEC) allows a control to be installed as a replacement if 1) a nonmetallic, noncombustible faceplate is used with nonmetallic attachment screws or 2) the circuit is protected by a ground fault circuit interrupter (GFCI). When installing a control according to these methods, cap or other green wire before screwing control into wallbox.

FCC/IC Information

This device complies with part 15 of the FCC Rules and Industry Canada license-exempt RSS standard(s). Operation is subject to the following two conditions: (1) This device may not cause interference, and (2) this device must accept any interference, including interference that may cause undesired operation. Modifications not expressly approved by Lutron Electronics Co., Inc. could void the user's authority to operate this equipment. Note: This equipment has been tested and found to comply with the limits for a Class B digital device, pursuant to part 15 of the FCC Rules. These limits are designed to provide reasonable protection against harmful interference in a residential installation. This equipment generates, uses and can radiate radio frequency energy and, if not installed and used in accordance with the instructions, may cause harmful interference to radio communications. However, there is no guarantee that interference will not occur in a particular installation. If this equipment does cause harmful interference to radio or television reception, which can be determined by turning the equipment off and on, the user is encouraged to try to correct the interference by one or more of the following measures: —Reorient or relocate the receiving antenna. —Increase the separation between the equipment and receiver. —Connect the equipment into an outlet on a circuit different from that to which the receiver is connected. —Consult the dealer or an experienced radio/TV technician for help.

Warranty

For warranty information, please visit www.casetawireless.com/warranty

Troubleshooting

Symptoms	Probable cause and action
Fan does not turn ON and no indicator lights turn ON.	<ul style="list-style-type: none"> Ensure Front Accessible Service Switch (FASS) is fully pushed in to the ON position. Ensure that the fan pull chain is set to highest possible setting. Neutral wire is not connected. Check wiring. Breaker is OFF or tripped (or fuse blown). Reset breaker or replace fuse. If condition persists, contact Lutron Customer Assistance or a licensed electrician. Load and Line wires possibly reversed, refer to wiring diagram in step 6.
Fan does not work.	Fan direction switch is between forward and reverse. Set switch to desired position.
Fan vibrates or wobbles.	<ul style="list-style-type: none"> Fan direction switch is between forward and reverse. Set switch to desired position. Fan blades must be balanced. See fan manufacturers installation guide to balance fan.
Fan speed is too slow.	Set fan pull chain speed to high.

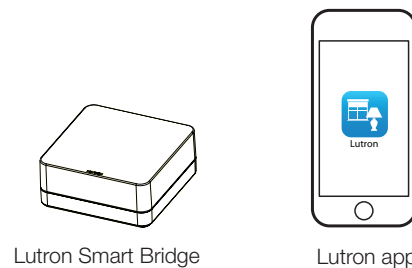
Using your Caséta Wireless kit (sold separately)

With a smartphone or tablet (Bridge required, sold separately)

The Caséta Wireless fan control can be controlled from a smartphone when used with the Lutron Smart Bridge.

If you are using the fan control and remote control with the Lutron Smart Bridge follow the instructions below.

Note: If you are using the fan control and remote control with another manufacturer's bridge, please refer to that manufacturer's instructions for set-up.



1 Download the Lutron app



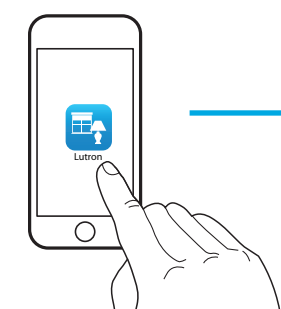
Search for "Lutron Caseta"



www.casetawireless.com/LutronApp

Apple is a trademark of Apple Inc., registered in the U.S. and other countries. App Store is a service mark of Apple Inc.

2 Launch the Lutron app



The Lutron app will walk you through setting up your devices.

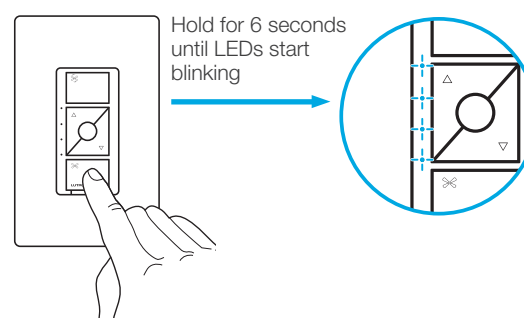
3 Use the Lutron app to complete ALL remaining steps

- Add devices
 - Pico remotes
 - Dimmers
 - Shades
 - Switches
 - Fan controls
- Control three ways
- Schedule your lights, fans, or loads
- Connect while away

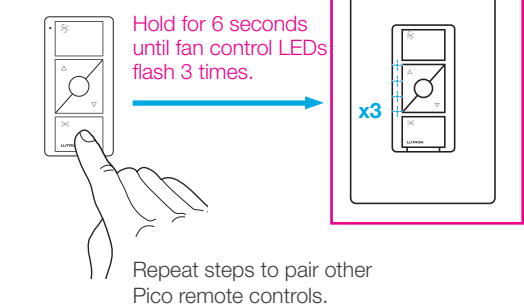
Without a smartphone or tablet (Bridge not required)

Pairing the fan speed control and Pico remote control

1 Press and hold "off" button on the fan control



2 Press and hold "off" button

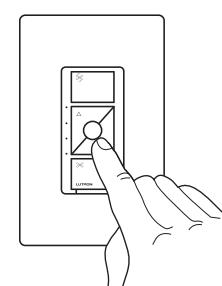


Repeat steps to pair other Pico remote controls.

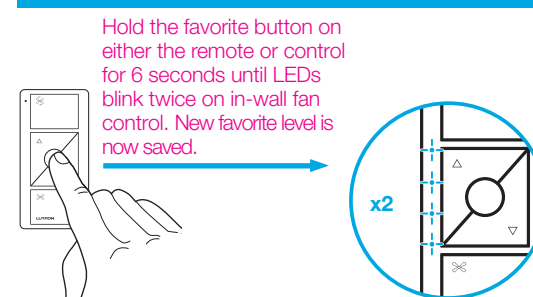
Changing the favorite fan speed setting on the Pico remote control or fan control (sold separately)

You can use the round "favorite" button on the Pico remote control or fan control to recall a favorite fan speed setting. We've set it to Medium, but you can change it to any speed you like.

3 Set desired fan speed setting on fan control

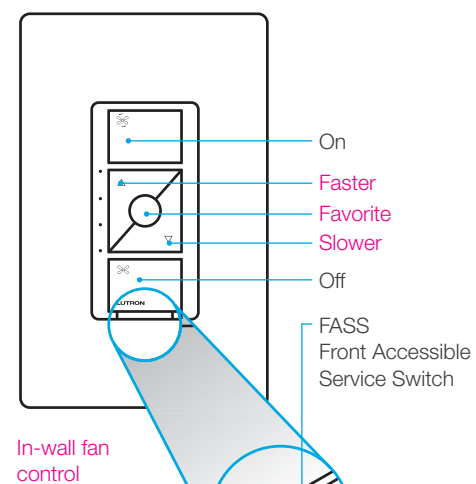


4 Press and hold "favorite" button on remote

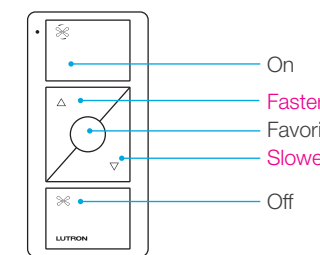


Hold the favorite button on either the remote or control for 6 seconds until LEDs blink twice on in-wall fan control. New favorite level is now saved.

Using your controls



In-wall fan control



Pico remote control (sold separately)

Important notes:

- For indoor use only.
- Operate between 32 °F (0 °C) and 104 °F (40 °C).

Device Ratings

In-wall fan control PD-FSQN
120 V~ 50/60 Hz
1.5 A

©Lutron Lutron, Caséta and Pico are trademarks of Lutron Electronics Co., Inc., registered in the U.S. and other countries. FASS and Smart Bridge are trademarks of Lutron Electronics Co., Inc. NEC is a registered trademark of the National Fire Protection Association, Quincy, Massachusetts. Google and the Google logo are registered trademarks of Google Inc., used with permission.
©2018 Lutron Electronics Co., Inc.