

1

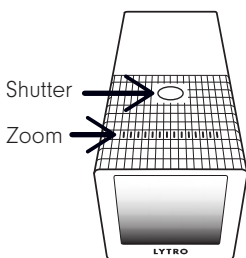


Camera

Lens
CapUSB
CableCleaner
ClothWrist
Strap

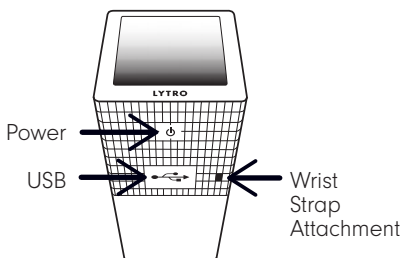
Your serial number can be found under the USB door. Record it here and retain for your records: _____.

2



Shutter

Zoom



Power

USB

Wrist
Strap
Attachment

3

Frame Picture / Zoom

- Set up your picture.
- Slide your finger to zoom.



4

Take a Picture

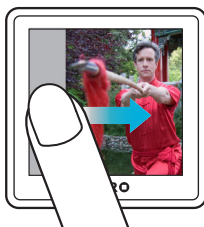
- No explanation needed. Have fun!



5

Review your Pictures

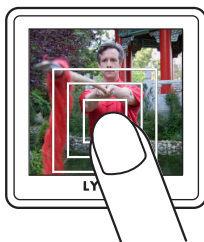
- Swipe the touchscreen from left to right to go back in time.



6

Tap to Refocus

- Tap on the touchscreen to bring your subject(s) into focus.



7

Star your Favorites

- Tap the Star to remember your favorites.
- Starred pictures will import first.



↓ **Continue**

8 Return to Picture Taking

- Press the shutter button or
- Swipe left to return to the present.

**9** Connect + Charge

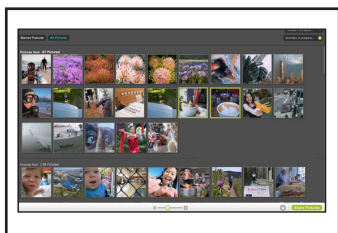
- Open the USB door.
- Connect to camera and computer to charge.

**10** Install the Lytro Desktop Application

- Install it from your camera via USB or
- Go to lytro.com/download for help.

**11** Review your Pictures

- With the camera plugged in, new pictures import and process automatically.
- Click on a picture to start playing with your living pictures.

**12** Share with Friends

- Click Share to upload to Lytro.com and Facebook.
- You can also email or embed your pictures.



Need more help? Visit Lytro.com

Facebook is a registered trademark of Facebook, Inc.

Take dramatic light field pictures by creating pictures with lots of depth. Here's how:

- Get very close to a subject, like 1 foot.
- Frame the shot with things at varying depths.
- Slide zoom to wide, all the way left.

F03-100001



LYTRO™

Quick
Start
Guide



The Fine Print - PLEASE READ

Health and Safety Information

The camera does not contain any user serviceable parts. Do not disassemble or attempt to repair your camera. Disassembly will void the warranty and may result in electric shock or damage to the camera.

Lytro recommends you take normal precautions when charging the camera to avoid electrical shock.

Do not expose the camera to direct sunlight or high temperatures for extended periods of time. Prolonged exposure to direct sunlight or extreme temperatures could void the warranty and can cause permanent damage to your camera's internal components.

Do not use organic solvents to clean the camera or expose your camera to water or other liquids; doing so may void the warranty. If liquid or foreign objects enter your camera, immediately power off the camera, disconnect from power source and contact Lytro customer service.

Avoid dropping the camera or subjecting it to sudden impact; doing so may void your warranty. If glass parts break as a result of sudden impact, handle them with caution to avoid injury.

A small percentage of people may be sensitive to viewing 3D images. If you feel ill watching 3D, immediately discontinue 3D use and consider seeking medical attention.

WARNING: The USB cable included with this product contains lead, a chemical known to the State of California to cause cancer, birth defects and other reproductive harm. Wash hands after handling.

Choking Hazard: This package may contain small parts, which may present a choking hazard to small children. Keep the camera and its accessories away from small children.

Operating Temperatures

Operate your Lytro light field camera in a place where the temperature is between 41°F to 104°F (5°C to 40°C). Note that the charging of the battery will not function when outside the camera's normal operating range. Be sure to store your Lytro camera where the temperature is between -4°F to 158°F (-20°C to 70°C). Don't leave your camera in your car, because temperatures in parked cars in the sun can exceed this range.

While in operation, the Lytro light field camera may get warm to the touch, which is normal.

Battery and Charging

Your Lytro light field camera comes partially charged from the factory. The amount of battery charge will vary depending on temperature. Lytro recommends fully charging the battery prior to using. Charging of your Lytro camera can be done from a USB port on your computer or from most USB power adapters. For minimum charging time, Lytro recommends using the Lytro approved USB Wall Charger available from Lytro.com.

Your Lytro camera is designed to be compatible with computers and USB power adapters certified to support the USB 2.0 standard. Lytro is not responsible for the operation of third party chargers or their compliance with safety and regulatory standards.

For further information on your rights and licensing, please review the Software License Agreement at www.lytro.com/legal/EULA.



FCC Compliance Statement

This device complies with Part 15 of the FCC Rules. Operation is subject to the following two conditions:

1. This device may not cause harmful interference, and
2. This device must accept any interference received, including interference that may cause undesired operation.

Note: This equipment has been tested and found to comply with the limits for a Class B digital device, pursuant to part 15 of the FCC Rules. These limits are designed to provide reasonable protection against harmful interference in a residential installation. This equipment generates, uses and can radiate radio frequency energy and, if not installed and used in accordance with the instructions, may cause harmful interference to radio communications.

However, there is no guarantee that interference will not occur in a particular installation. If this equipment does cause harmful interference to radio or television reception, which can be determined by turning the equipment off and on, the user is encouraged to try to correct the interference by one or more of the following measures:

- Reorient or relocate the receiving antenna.
- Increase the separation between the equipment and receiver.
- Connect the equipment into an outlet on a circuit different from that to which the receiver is connected.
- Consult the dealer or an experienced radio/TV technician for help.

Changes or modifications to this device not expressly approved by the party responsible for compliance could void the user's authority to operate the equipment, under FCC rules.

Disposal and Recycling Information

Your Lytro camera should be disposed of properly according to applicable local laws and regulations. Because this product contains a battery, please dispose of product separately from household waste. When your Lytro camera reaches its end of life, contact Lytro or your local authorities to learn about recycling options.

Warranty Information

For further information on product warranty, please review the Lytro Warranty at www.lytro.com/legal/warranty.

Other Information

This product is covered by U.S. Patent Number 7,936,392.

© 2011 Lytro, Inc. Lytro and the Lytro logo are trademarks of Lytro, Inc. All rights reserved.

PN: F03-100002