

M-AUDIO

KeyStudio 49i

Keyboard-based Music Production System



Quick Start Guide

Table of Contents

Introduction	3
KeyStudio 49i Features	3
Keyboard	3
Built-in Audio Interface	3
Software	3
What's in the Box?	4
About this Guide	4
Basic Operation of KeyStudio 49i	4
Using the Audio Inputs	5
Advanced Features in Edit Mode	5
MIDI Connections	6
Driver Installation for KeyStudio 49i	6
Windows XP and Windows Vista (32-bit editions)	6
Macintosh	7
Connecting the KeyStudio 49i to your Computer	8
Installation of the M-Audio GM Module Software	9
Windows XP and Windows Vista (32-bit editions)	9
Macintosh OS X	9
Opening the M-Audio GM Module Software	10
M-Audio GM Module Software Configuration	10
Overview	10
Channels 1-16	10
Selecting Categories and Instruments	11
Additional GM Module Software Information	11
Third Party Software Configuration.	11
Additional Information and Support	12
Warranty	12

Introduction

Congratulations on your purchase of M-Audio KeyStudio 49i: a 49-key full-size, velocity sensitive USB keyboard, digital piano, audio interface, and software package, designed for easy integration with your computer. KeyStudio 49i is ideal for use with a multitude of music creation applications. We recommend you spend a few minutes reviewing this Quick Start Guide to ensure proper setup.

KeyStudio 49i Features

Keyboard:

- 49-key velocity sensitive keyboard
- on-board piano sound
- on-board piano reverb effect
- Pitch Bend wheel
- Modulation wheel; MIDI re-assignable
- Piano Volume knob; MIDI re-assignable
- Octave up/down buttons; MIDI re-assignable
- Sustain foot pedal input; MIDI re-assignable
- MIDI Out port
- 20-note polyphony
- Edit mode button for advanced functions and programming
- bus-powered through USB or DC power for standalone functionality
- Class-compliant operation: no driver installation required—simply connect the keyboard and power on

Built-in Audio Interface:

- 16-Bit, 44.1KHz, 2-input, 2-output audio interface
- XLR microphone input, 1/4" instrument input, and stereo RCA inputs
- two rear-panel 1/4" audio outputs
- two front-panel 1/4" headphone outputs
- dedicated Instrument and Microphone gain control knobs with signal and peak LEDs
- Direct Monitor knob for near-zero latency hardware monitoring

Software:

- M-Audio GM Module application
- Ableton Live Lite

What's in the Box?

- M-Audio KeyStudio 49i MIDI controller keyboard / audio interface
- Printed Quick Start Guide
- M-Audio KeyStudio 49i CD-ROM containing:
 - Software drivers and documentation
 - M-Audio GM Module application
- Ableton Live Lite CD-ROM and registration card
- USB cable

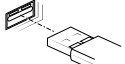
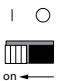
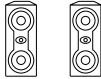
If any of the above listed items are missing, please contact the retailer where you purchased the product.


About this Guide


This Quick Start Guide covers:

- Basic operation of KeyStudio 49i.
- Driver installation for KeyStudio 49i.
- Using KeyStudio 49i with M-Audio GM Module software.

Basic Operation of KeyStudio 49i

1. Use the provided USB cable to connect KeyStudio 49i to an available USB port on your computer. The USB cable not only powers the keyboard but also transmits MIDI data to and from your computer. 
2. Make sure that the power switch on the back of the keyboard is in the "on" position. KeyStudio 49i is now ready to be used – no additional installation steps are required for basic operation. 
3. Connect the two 1/4" outputs on the rear panel of KeyStudio 49i to powered monitors, an amplifier, or a mixer. 

You may also listen through headphones by connecting one or two sets of headphones to the 1/4" stereo headphone outputs on KeyStudio 49i. 

4. Be sure the Piano Vol. knob is at a reasonable listening level. 

5. Play the keyboard.



Piano Vol

The KeyStudio 49i Piano Demo

KeyStudio 49i has a built-in piano demo song. To hear this demo:

1. Press the Edit Mode button so that the Edit Mode LED lights.
2. Press the Reverb button.

Demo playback can be stopped by pressing either the Edit Mode button or the Reverb button.

Using the Audio Inputs

A dynamic microphone can be connected to the XLR input located on the rear panel*, and an instrument such as a guitar or bass can be connected to the 1/4" input jack also located on the rear panel.

***IMPORTANT:** Be sure the Mic and Inst. Gain knobs are turned down before connecting equipment to these two input jacks. Failure to do this can result in a loud pop or feedback which can damage your speakers and hearing.

Each of these two inputs has an independent preamp featuring a dedicated gain control knob, and signal and clip LEDs. Two analog RCA inputs are also located on the back panel. Signal from these inputs is mixed with the Microphone and Instrument input signals and routed to the 1/4" output jacks.



Advanced Features in Edit Mode

KeyStudio 49i provides many advanced MIDI features and programming options. Pressing the Edit Mode button puts the keys of the keyboard into Edit mode. This mode enables you to configure internal features of KeyStudio 49i and transmit advanced MIDI messages. Consult the User Guide found on the included CD-ROM for a complete description of the KeyStudio Edit mode.

MIDI Connections

You can connect the KeyStudio 49i MIDI output to an external MIDI device's MIDI input. This enables you to control an external synthesizer or sound module while using KeyStudio 49i as a standalone keyboard controller. A sustain pedal can also be connected to the 1/4" Sustain pedal jack on the back of KeyStudio.

Driver Installation for KeyStudio 49i

KeyStudio 49i functions as a class-compliant device. This means your computer will recognize KeyStudio 49i without the need to install additional drivers. This gives immediate access to all audio inputs and outputs as well as to the built-in MIDI interface. As you become more familiar with the KeyStudio keyboard, you may wish to take advantage of this product's additional professional features by installing the KeyStudio 49i drivers.

Installing the KeyStudio ASIO drivers in Windows improves audio performance by reducing Latency. Latency is the time it takes for MIDI input (when using software synthesizers) or audio input signal to appear as audio at your computer's outputs for monitoring purposes. In Windows, additional features also include: using your new keyboard with more than one application at the same time (multi-client), sending large SysEx messages, or using your KeyStudio 49i with Pro Tools M-Powered recording software or the included GM Module software.

On a Macintosh computer, installing the M-Audio drivers enables you to use your KeyStudio 49i with Pro Tools M-Powered recording software.

Windows XP and Windows Vista (32-bit editions)

PLEASE NOTE: *If you are installing drivers for KeyStudio 49i on your Windows XP or Windows Vista computer, disconnect your KeyStudio until you are instructed to connect it.*

To install drivers for KeyStudio 49i:

1. Insert the M-Audio KeyStudio 49i CD-ROM into your computer's CD-ROM drive.
2. The computer will automatically display the interactive install screen. If your computer fails to launch the installer, manually start it by clicking Start > My Computer, and double-clicking KeyStudio 49i.
3. Choose the KeyStudio 49i keyboard from the pull down menu and click "Install."

4. Follow the driver installer's on-screen direction prompts.
5. At various points in this installation process, you may be notified that the driver being installed has not passed Windows Logo Testing, or asked whether the program you wish to run is a trusted application. Click Continue Anyway or Install to proceed with installation.



6. Click "Finish" once the installer has completed the installation.

Macintosh

M-Audio driver installation is not required in order to use KeyStudio 49i with the GM Module software on your Macintosh OS X computer. These drivers are however, required for Pro Tools M-Powered use. Instructions for installing the KeyStudio 49i OS X drivers can be found in the User Guide on the included KeyStudio 49i CD-ROM.

Connecting the KeyStudio 49i to your Computer

Use the provided USB cable to connect KeyStudio 49i to an available USB port on your Windows or Macintosh computer. Make sure that the power switch on the back of the keyboard is in the “on” position. The USB cable not only powers the keyboard but also transmits MIDI data to your computer.

In Windows XP, the Found New Hardware Wizard will appear with the following questions:

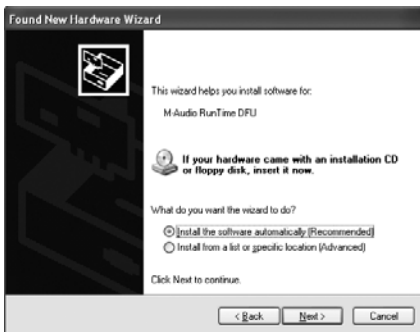
1. Can Windows connect to Windows Update to search for software?

Select “**No, not this time**,” and click **Next** to continue.



2. What do you want the wizard to do?

Select “**Install the software automatically**,” and click **Next** to continue.



Continue to follow the New Hardware Wizard's on-screen direction prompts. Once the New Hardware Wizard has completed, click “**Finish**.” You will see a message pop up stating, “*Your new hardware is installed and ready to use.*”

Windows may repeat steps 1 and 2 of the installation process. This behavior is normal.

Installation of the M-Audio GM Module Software

Windows XP and Windows Vista (32-bit editions)

1. Insert the M-Audio KeyStudio 49i CD-ROM into your computer's CD-ROM drive.
2. The computer will automatically display the interactive install screen. If your computer fails to launch the installer, manually start it by clicking Start > My Computer, and double-clicking KeyStudio 49i.
3. Choose M-Audio GM Module from the pull down menu and click "Install."
4. Follow the installer's on-screen direction prompts.
5. During setup, the installer will ask you to specify two directories on your computer. The first is for the GM Module Data directory (approximately 350 MB) and the second is for your VST plug-in directory. You may specify a custom location, or use the default setting.
6. When the installer finishes installing the software, click "Finish."
7. M-Audio GM Module is now installed on your computer.

Note: *The GM Module software requires the KeyStudio 49i hardware to be connected and its drivers to be installed in order to operate in Windows.*

Macintosh OS X

1. Insert the M-Audio KeyStudio 49i CD-ROM in your computer's CD-ROM drive.
2. A CD-ROM icon will appear on your desktop once the disc is inserted into your computer. Double-click this icon to view the contents of the disc.
3. Double-click the "Open Me" icon.
4. Select "GM Module" from the drop-down menu and click "Install."
5. The software installer will launch. Follow the on-screen direction prompts. During Installation, Mac OS X will ask you to enter your user name and password. Enter this information and click OK to confirm. If you have not configured a password for your computer, leave the password field blank and click OK. If you are not the computer's owner, ask the owner or your Administrator for the missing information.
6. The M-Audio GM Module is now installed on your computer.

Opening the M-Audio GM Module Software

Once the M-Audio GM Module application is properly installed, there are two options for opening your new software:

1. **Software standalone mode:** Double click the M-Audio GM Module shortcut icon that was placed on your computer's desktop during installation. If this icon does not appear in Windows, click on *Start > All Programs > M-Audio > M-Audio GM Module > M-Audio GM Module* to launch your new software. On a Mac, go to *Applications > M-Audio GM Module*.
2. **RTAS, VST, or AU plug-in mode:** Launch your host application, and select the M-Audio GM Module as a virtual instrument on an empty track. Consult your host application's documentation to learn how to do this.

M-Audio GM Module Software Configuration



Overview

M-Audio GM Module is a 16-channel, multi-timbral General MIDI sound player. The GM Module software provides 128 instruments (0-127). It receives MIDI messages from your KeyStudio 49i USB keyboard, and sends audio signal out of the KeyStudio audio outputs.

Channels 1-16

M-Audio GM Module has 16 individual channels that can simultaneously produce sounds. Each of these channels can be set to a different instrument and has its own Volume, Pan, Tone, Category/Instrument, Chorus, Reverb, Mute and Solo controls. To select a channel, click on its level meter located above the channel's number, and an outline will appear around the level meter. **The set of controls to the right of the channel meter display (including the Mute (M) and Solo (S) buttons) only affect the selected channel.**

The General MIDI standard provides for 16 MIDI channels, 15 of them can play any of 128 available instruments. Channel 10 is an exception and is always mapped to the General MIDI drum kit. This assignment is fixed and cannot be changed. Information on how to transmit MIDI messages to M-Audio GM Module on different channels can be found in the "Advanced MIDI Features in Edit Mode" section of the User Guide on the included KeyStudio 49i CD-ROM.

Selecting Categories and Instruments

When the M-Audio GM Module software is launched in standalone mode, it sends a MIDI message to the KeyStudio keyboard. This message programs the Octave buttons on KeyStudio 49i to send program change messages. The GM Module software always opens with program zero selected on GM Module channel 1. This mutes the GM Module, allowing only the KeyStudio 49i built-in piano sound to be heard. Pushing the Octave ">" button unmutes the GM Module, and allows you to step through program numbers 1-127, which trigger General MIDI sounds in the GM Module software (see the User Guide Appendix A). The built-in piano sound in KeyStudio 49i will remain silent while playing any of the GM Module sounds when the software is in standalone mode. If program zero is once again selected on GM Module channel 1, the GM Module software will once again be muted, and the KeyStudio 49i built-in piano sound will be heard.

GM Module arranges its sounds into General MIDI standard categories. Clicking the category field produces a drop-down menu of all of these categories. Although selecting a new Category changes the list of available instruments in the Instrument field, it is necessary to make a selection from the Instrument field for a new sound to load. This is useful when using the GM Module software in live performance situations where it may be undesirable for the first sound in a category to automatically load. In such situations, it is usually preferred to have the previous sound loaded until you select a particular sound from within a category.

Additional GM Module Software Information

For more information on M-Audio GM Module, see the KeyStudio 49i User Guide contained on the KeyStudio 49i CD-ROM.

Third Party Software Configuration

With the KeyStudio 49i keyboard properly installed, any MIDI capable software application on the same system should recognize KeyStudio 49i as a MIDI input device. To use the KeyStudio 49i keyboard with your software, you may need to configure the software to read MIDI data being sent from KeyStudio 49i. This often entails going into the Options or Device Setup menu in your music software application and selecting "M-Audio KeyStudio IO In" or "USB Audio Device" as the MIDI input. In Windows XP, KeyStudio 49i will appear as "USB Audio Device" if the M-Audio drivers have not been installed. After installing these drivers, KeyStudio 49i should appear as "M-Audio KeyStudio IO.*" Please consult your software's documentation for instructions on how to configure the software for use with MIDI input devices.

**The actual KeyStudio name displayed by the computer may vary slightly depending on what recording software is being used.*

Additional Information and Support

For more information on M-Audio GM Module, see the KeyStudio 49i User Guide contained on the KeyStudio 49i CD-ROM.

Warranty

Warranty Terms - M-Audio warrants products to be free from defects in materials and workmanship, under normal use and provided that the product is owned by the original, registered user. Visit www.m-audio.com/warranty for terms and limitations applying to your specific product.

Warranty Registration - Immediately registering your new M-Audio product entitles you to full warranty coverage and helps M-Audio develop and manufacture the finest quality products available. Register online at www.m-audio.com/register to receive FREE product updates and for the chance to win M-Audio giveaways.



ESD and Fast Transient may cause the unit to temporarily malfunction. Switch off and on again to restore normal operation.

WARNING: This product contains chemicals, including lead, known to the State of California to cause cancer, and birth defects or other reproductive harm. **Wash hands after handling.**

© 2007 Avid Technology, Inc. All rights reserved. Product features, specifications, system requirements and availability are subject to change without notice. Avid, M-Audio, KeyStudio 49i, Pro Tools and GM Module are either trademarks or registered trademarks of Avid Technology, Inc. All other trademarks contained herein are the property of their respective owners.