

M3 ORANGE series

Quick Manual Ver.1.4



PACKAGE

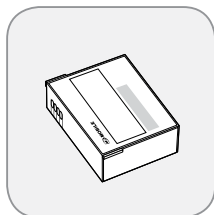
- Please check all items below are included in package box.



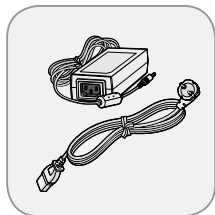
< M3 ORANGE >



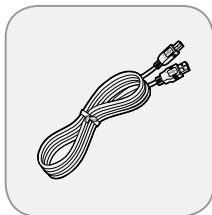
< Cradle >



< Battery >



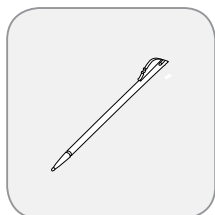
< Adaptor >



< USB cable >



< Ear-Mic >



< Stylus pen >

※ Warning

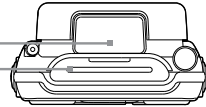
Use of controls or adjustments or performance of procedures other than those specified herein may result in hazardous radiation exposure.

DEVICE

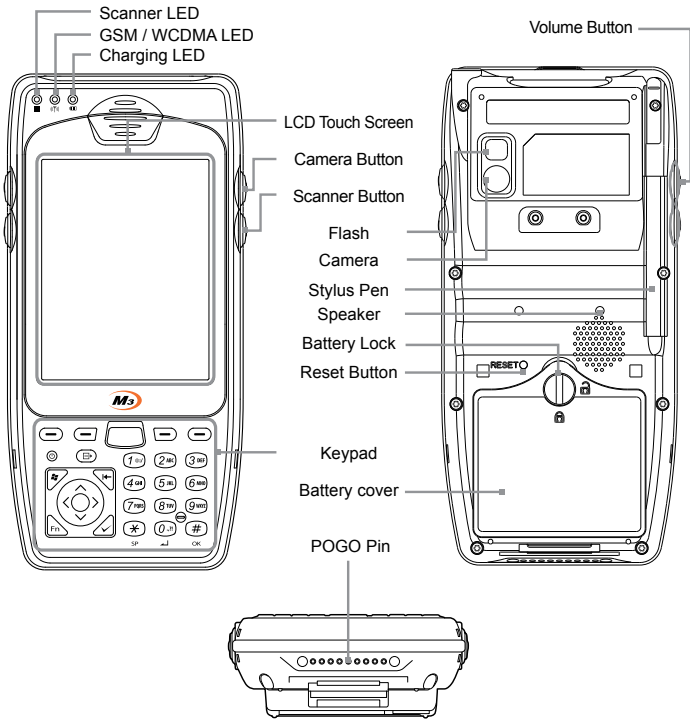


< 1D Scanner >

Barcode Scan Window
Micro SD card slot



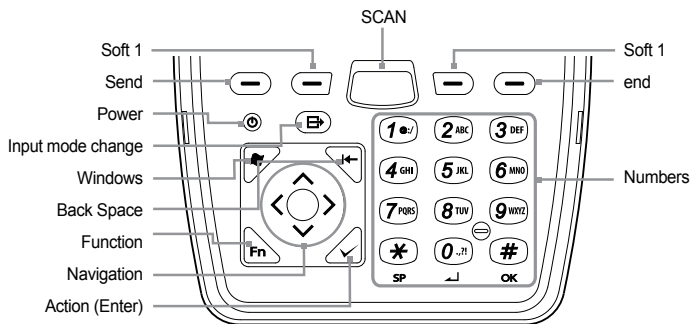
< 2D Imager >



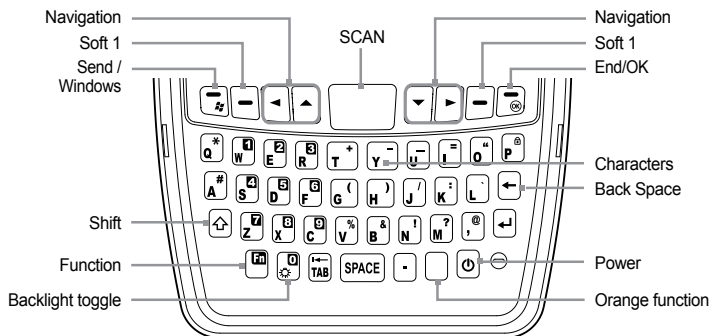
FEATURES

KEYPAD

- M3 ORANGE has two types of keypad – Alphanumeric and QWERTY. Some function keys may not work depending on its options.



<AlphaNumeric>

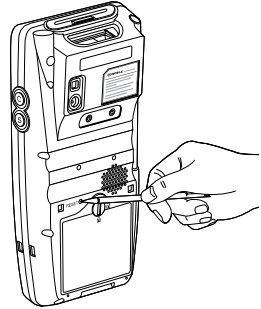


<QWERTY>

SOFT RESET

When an unexpected error occurs while using the device, SOFT RESET allows your device to restart, similar to rebooting a computer. It will adjust memory allocation - all records and entries are retained after soft reset but unsaved data or files may be lost.

- Press the RESET BUTTON briefly.



CLEAN BOOT

When an unexpected error cannot be solved with SOFT RESET, perform CLEAN BOOT to restart the system. It will erase all data stored in the device except in Flash Disk and return to its default settings.

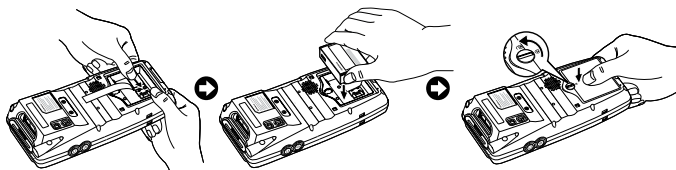
Follow below steps to CLEAN BOOT. (> + Ⓞ or ◀ + Ⓞ)

- Press the POWER BUTTON more than 10 seconds.
- Press and hold the <RIGHT NAVIGATION> button then press the POWER button briefly.
- When Boot Menu will be displayed on the screen, press “3” to proceed CLEAN BOOT.

CARD INSTALLATION

USIM Card Installation

- Remove the battery from the battery pack.
- Insert the USIM Card as shown in the below picture.
- Insert the battery back to original position and lock using the stylus pen.
- Check whether it is installed properly.



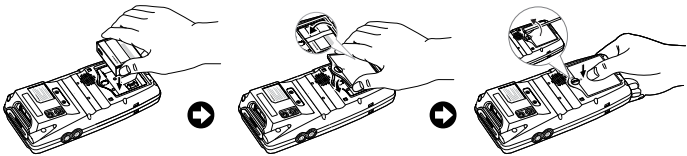
Micro SD Card Installation

- Open the memory card cover.
- Insert the Micro SD Card as shown in the left picture.
- Close the memory card cover back and check whether it is installed properly.

BATTERY

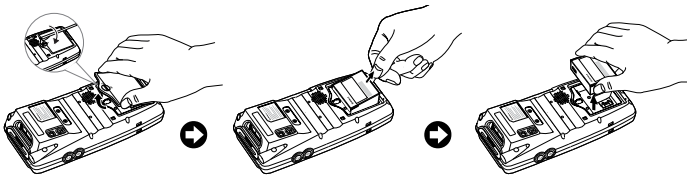
Inserting Battery

- Insert the battery to the battery pack position.
- Tighten up the battery lock using the stylus pen.



Removing Battery

- Loosen the battery lock using the stylus.
- Then remove the battery from the battery position.



※ Warning

Risk of Explosion if Battery is replaced by an Incorrect Type. Dispose of Used Batteries According to the Instructions.

CHARGING

How to charge

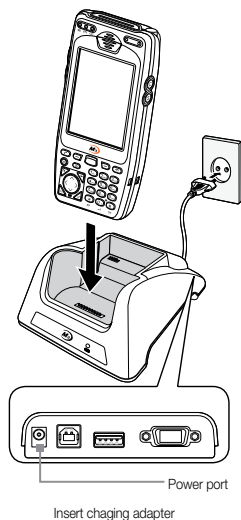
- Supply power to the cradle using the AC charger.
- Insert the PDA to device slot to start charging the PDA.

Charging status

Charging status of the PDA and the spare battery is indicated by LEDs.

LED charging indicator on the cradle indicates the charging status of the spare battery.

LED on upper left corner in the middle of the device indicates the charging status of the battery attached to the PDA.



Battery attached to the PDA	LED color	Spare battery
The battery is being charged.	RED	The spare battery is being charged.
The battery is fully charged.	GREEN	The spare battery is fully charged.

SCANNER

Scanning

- Launch the Scanner program (either ScanEmul or M3ScanTest).
- Press the SCAN BUTTON toward barcode to read.

Make sure the laser beam covered whole barcode to read data properly.



O



X

Imaging

- Launch the Scanner program.
- Press the SCAN BUTTON toward barcode to read.

Make sure the laser beam covered whole barcode to read data properly.



O



X

※ Warning

LASER LIGHT - Do not stare into beam, CLASS 2 LASER PRODUCT
1.0mW, MAX OUTPUT:650nm

CAMERA

Taking pictures

- Run the Camera program.
- Tab the Capture button to take a picture.
- Taken pictures are stored in Pictures&Videos folder.
(Start\Programs\Pictures&Videos)

Taking videos

- Run the Camera program.
- Tab the Video Mode button to take a video.
- Taken videos are stored in Pictures&Videos folder.
(Start\Programs\Pictures&Videos)

※ Warning

It may cause significant damage to your eyes if you directly look the flash attached at camera module.

SYNCHRONIZE with YOUR PC

Please download the ActiveSync from Microsoft webpage to activesync with PC.

ActiveSync :

<http://www.microsoft.com/downloads/en/details.aspx?FamilyID=9e641c34-6f7f-404d-a04b-dc09f8141141>

Windows Mobile Device Center (Windows Vista and 7) :

<http://www.microsoft.com/windowsphone/en-us/howto/wp6/sync/installing-wmdc.aspx>

Should you require any services or technical support on M3 Mobile's products, contact your supplier or visit M3 Mobile technical support webpage <http://support.m3mobile.co.kr>. Desired or relevant manuals can be downloaded from Manuals or FAQ in technical support webpage. User manual, especially, is included in Flash Disk so that M3 ORANGE users can obtain it from the Flash Disk as well.

For DOA or RMA, please send the defective product to suitable address AFTER consulting the supplier.



Headquarter/Service Center

M3 bldg., 735-45,
Yeoksam-Dong, Gangnam-gu,
Seoul, 135-080, Korea
Tel : +82 2 574 0037
Fax : +82 2 558 1253
www.m3mobile.co.kr
sales@m3mobile.co.kr

Production Center

Chun-ui Techno Park 201-610,
202, Chun-ui Dong, Won-Mi gu,
Buchoen, Gyeonggi Do,
420-857, Korea
Tel: +82 32 623 0030
Fax: +82 32 623 0035