

MobileCompia

(MC-6300S / MC-6500S)

User Manual



Please read "the safety guide" before use and use it in a proper manner.

MobileCompia Homepage

<http://www.mobilecompia.co.kr>

All the information of user manual and programs in CD can be downloaded at the mobilecompia homepage.



Note

- This manual is subject to copyright protection along with all relevant rights.
- No part of this document can be copied, reproduced, changed or translated in whole or in part by any means without prior written consent of MOBILECOMPIA Co., Ltd.
- The content of the manual is provided “as-is” and be subject to change at any time without notice.
- MOBILE COMPIA Co., Ltd. makes no warranty of any kind with regard to this manual, including, but not limited to, the implied warranties of merchantability and fitness for a particular purpose.
- Microsoft, ActiveSync, Windows, Windows logos, Windows CE 5.0 logos are trademarks, or registered trademarks of Microsoft Corporation in the United States and/or other countries. Microsoft OEM products are licensed by Microsoft Licensing Inc., a entirely owned subsidiary of Microsoft Corporation.
- All other product names in this document or product are company names, trademarks or registered trademarks of the respective owners.



Copyright and Agreement

- This user manual is provided “as-is”. It may contain editing error or omitting due to the difficulty of expressing technical feature.
- If an application program provided by other supplier using by M3, refer to the supplier for a program manual.
- The application program providers have the responsibility of indicating their contact number for customer service on M3 terminal, item box, or program.
- MobileCompia Corporation do not warranty any programs produced and added by the third software companies after M3 products are distributed from our factories.
- MobileCompia Corporation has the right to ask warranty of any programs to the program providers to meet the needs of mobile networking companies.
- The contents in the user’s manual are protected under the Software Copyright Act. Copy, reproduction, distribution of the contents in the user’s manual without any written agreement notice of MobileCompia Co. Ltd., is considered as criminal actions.
- Windows, MS Office, Outlook, ActiveSync, Internet Explorer programs are the registered brand of Microsoft.
- M3 is the registered brand of MobileCompia Co. Ltd.
- The brands of other products and service referred in this manual belong to corresponding providers.



Caution when using M3 (1)

- User Caution
 - When the unit is lost or stolen, notify to network provider immediately.
 - Do not rent the unit to third person without authorized permission.
 - Do not use the unit while driving.
 - For technical help, contact designated service centers.
 - Contact responding suppliers directly for questions on applications and work programs other than hardware and basic installed applications.
 - Use supplied adapter and accessories by MobileCompia Co. Ltd.
 - Any defect on a unit while using other batteries, chargers and accessories can not get warranty.
- Carrying and Storage Caution
 - Avoid to use the device under high temperature and humidity. It may cause fatality to the device.
 - Avoid intentional dropping from high elevation. It may cause fatality to the device.
 - Charge batteries fully before the first time use of the device.



Caution when using M3 (2)

- Do not reconstruct
 - Do not reconstruct M3 for any purpose.
 - It may cause fire in the unit, and wound or electric shock to users.
 - Any defect caused by reconstructing units, can not get warranty.
- Illegal copy of mobile phone is prohibited
 - The person who reproduces mobile phone and uses this mobile phone is considered as criminals.
 - The use of lost or stolen mobile phone is considered as a criminal act.
 - Keeping the lost or stolen mobile phone after turning power off, is considered as a criminal act.

Size and Features

Used frequency band	GSM 850 (TX) 824 ~ 849 MHz / (RX) 869 ~ 894 MHz GSM 900 (TX) 880 ~ 915 MHz / (RX) 925 ~ 960 MHz GSM 1800 (TX) 1710 ~ 1785 MHz / (RX) 1805 ~ 1880 MHz GSM 1900 (TX) 1850 ~ 1910 MHz / (RX) 1930 ~ 1990 MHz
Band width	200 KHz
External appearance	78.6 x 160 x 24.9mm (Width x length x height)
Weight	300g
Transmission output power	Maximum 0.3W
Operational Temperature	Main body -10 °C ~ +50 °C
	Adapter -10 °C ~ +50 °C
Relative Humidity	5% ~ 80%
AC Power	Input : AC 100 ~ 250V, 50 ~ 60Hz Output : DC +5.2V, 3.0A

Contents

● Note	2	Screen Rotation	25
● Copyright and Agreement	3	Infrared Communication	26
● Caution when using M3	4	Bluetooth Communication	27
● Size and Features	6	Function Key mode	29
1. M3 Introduction	9	Transcriber/Keyboard	30
Product Composition	10	3. How to use internet	32
Name and function of each part	12	Via GPRS/EDGE	33
Input Button	14	Via Wireless LAN	35
Soft/Hard Reset	15	Via USB	36
How to use stylus pen	16	Via Bluetooth	37
LED/Battery attaching/detaching	17	4. ActiveSync	38
Charging	18	ActiveSync Introduction	39
How to connect to PC	19	Installing ActiveSync	40
How to optimize battery longevity	20	Synchronization of data	41
2. Basic Usage	21	ActiveSync Troubleshooting	42
Calibration	22		
Main Window	23		

Contents

5. How to use the Phone	43	8. Usage of Application and Utility programs	65
Init Screen	44	Calculator/Image Viewer	66
Key Pad	45	MS-Backup	67
Status icon/Display window	46	Menu Settings/Touch Protector	68
Phone function	47		
Voice Conversation via Bluetooth	48		
SMS send and receive/Phone settings	49		
6. Usage of Scanner/Camera	50		
How to use Scanner	51		
How to use Camera	52		
7. Usage of Pims	53		
Today	54		
InfoBox	55		
SmartMemo	60		
SWRecorder	63		

1. M3 Introduction



- Product Composition
- Name and Function of each part
- Input Button
- Soft/Hard Reset
- How to use Stylus pen
- LED Battery Attaching/Detaching
- Charging
- How to connect to PC
- How to optimize Battery Longevity



Product Composition (1)

- At the first time of opening the product box, please check if it contains all the basic components, listed as following.



M3 plus main terminal
+ 2 units of standard battery



Cradle + USB cable



Manual CD + ActiveSync 3.x



Ear Mic Phone + 2 units of Stylus pen



Portable Adapter




User Manual

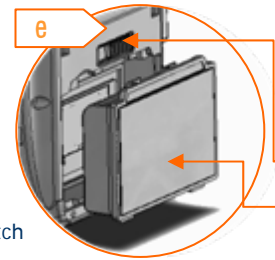
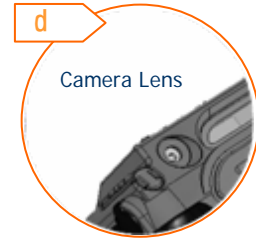
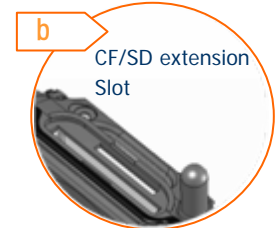


Product Composition (2)

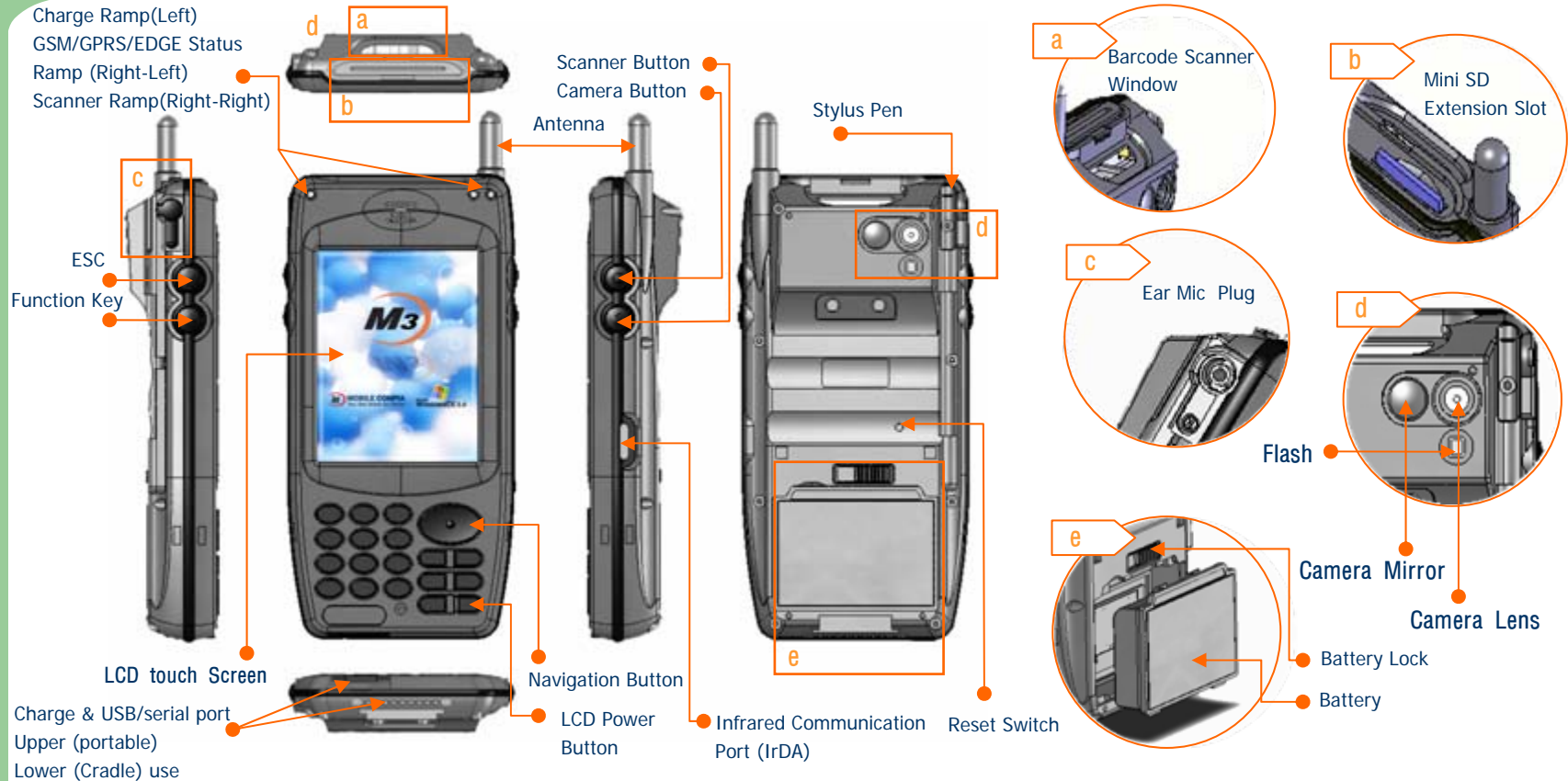
- How to use the manual
 - This manual provides detailed information to make using the device easier and faster.
 - The content related to phone or communication in this manual is only applicable when the device is equipped with GSM/GPRS/EDGE module for Voice and Data communication.
 - The features described in this manual can not be used when it is not equipped in the device (e.g. GSM, WLAN, Bluetooth, IrDA, Scanner, Camera).
 - This manual contains the basic usage which user should know in order to use the device. For more detailed description, please refer to the manual in CD.
 - The content of this manual is subject to change without prior notice due to product improvement or modification of its functions, etc.

 The location of camera and the availability of Flash is depending on the model of M3.
MC-6300S(Camera is located at Top-most, No Flash),
MC-6500S(Camera is located at the rear of device, With Flash)

Name and function of each part (MC-6300S)



Name and function of each part (MC-6500S)

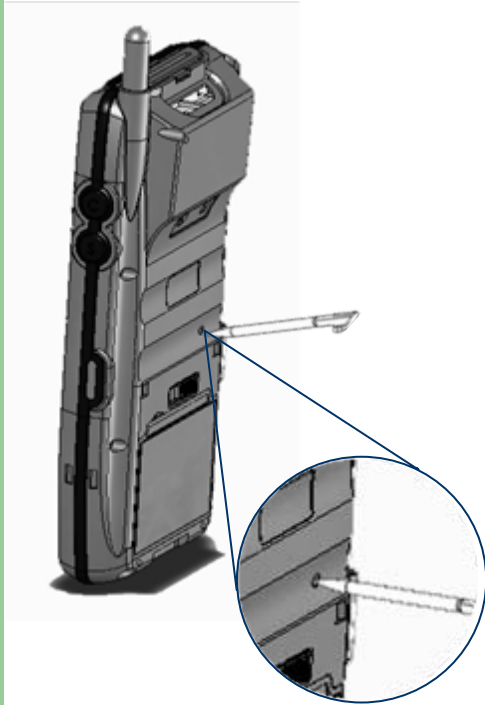


Input Button

Button	Action	Function
Power button	Press	Power ON/OFF
	Long press	Backlight ON/OFF
Number button	Press	Number Input
ESC button	Press	ESC (Escape) function
Function button	Press	Changes to Function Mode
Navigation button	Press	Moves to Up/Down and Left/right
Scanner button	Press	Activates Scanner Beam
Camera button	Press	Activates Camera capture
Return button	Press	Execute Selected application (Enter)

Button	Action	Function
Reset button	Click	Software Reset
	Click again after long press	Hardware Reset (long press of about 4 seconds and then click one more time)
	Long press	Power Off (used for complete power off)
Phone button	Press	Run or display/hide the Phone program
LCD Click	Click (Tap)	Item select/click
	Double Click	Same as Double Click on PC
	Drag & Drop	As like mouse, can drag item to a certain position
	Tap & Hold	Keep pressing screen with stylus pen. Possible to select menu (Copy, Delete, Paste)

Soft/Hard Reset



- Soft Reset

- Press reset groove briefly as like the picture.
- For unexpected error occurred while using software, click reset button.
- In soft reset mode, application will be shut down, and unsaved data will be lost. However saved data and file will be safe.

- Hard Reset

- Press reset groove for more than 4 seconds and the press it briefly one more time.
- For fatal problem with a device, and application problem beyond the soft reset solution, hard reset is required.
- User shall caution that all data will be set as default value except data in flash disk folder.
- Press the reset button for more than 4 seconds. The initial screen will be briefly popped up and then immediately goes off.

- ⚠ When doing soft reset, pressing reset button longer than one second may trigger hard reset.
- ⚠ When doing hard reset, every created data, data file and programs personal managing data downloaded from PC will be lost. To avoid such cases, use external storage device or internal flash disk having regular back up of important data

How to use Stylus Pen

- **Tap**

To select items or executing, tap the touch screen one time.



- **Double Click**

Similar function as mouse double click function of computer, click screen twice



- **Long Press**

After tapping, leave Stylus touching the screen. This function is frequently used for file copy, delete, and paste or with when keyboard is using.



- **To drag**

Similar function as mouse drag function of computer, with pressing screen, drag item to move to other position.

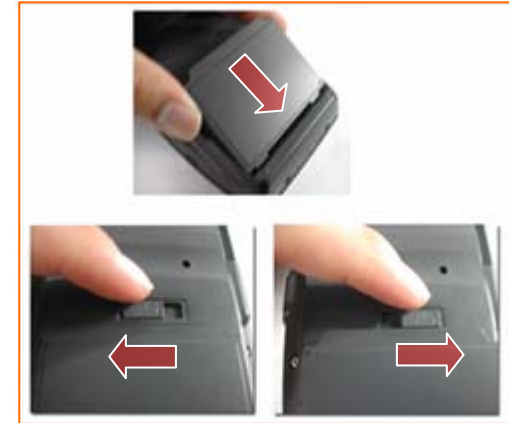


LED / Battery attaching/detaching

- LED Alarm
 - Informs Charging, Scanner Status.

Type	LED Status	Details
LED for charging	Red Green	Charging Charging complete
GSM /GRPS Status LED	Blue Blinking	GSM/GPRS Standby (within range of phone/internet)
	Blue On	GSM/GPRS in use (phone/SMS/internet in use)
	Blue OFF	GSM/GPRS is off or out of range
Scanner LED	Green	When the barcode data is successfully read

- Battery attaching/detaching
 - Attaching Battery
 - As picture shown, put the battery pack to back of PDA, and lock the battery pack with locking device.
 - Detaching Battery
 - Press locking device to the right, then using upper notch, detach the battery from main body.



Charging

- Connect plug-in from charger to charge jack of main body, or charge jack of cradle, and then place main body onto cradle.

- Charging LED

Type	LED Status	Details
Direct charging to main body	Red Green	Charging Charging Complete
Cradle Charging (Extra battery charging)	Red Green	Charging Charging Complete

- When charging, the status of the battery attached to main body can be confirmed by the LED left of upper corner of main body. Also the status of Sub-battery can be confirmed by the LED right of low corner of Cradle.

- ⚠ Do not use any other charger except one (5.2 V / 3A) provided .
- ⚠ Make sure to handle it gentle; damage with excessive force may cause no warranty.
- ⚠ Incongruent change of battery can cause the explosion.
- ⚠ When attached battery is completely discharged, plug charger to main body, then reset the device to check if screen is back on. To use, do at least 10 minute charging.

- Charging in Cradle

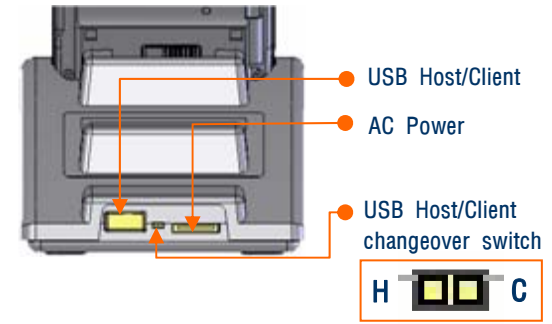


- Charging using portable adapter



How to connect to PC

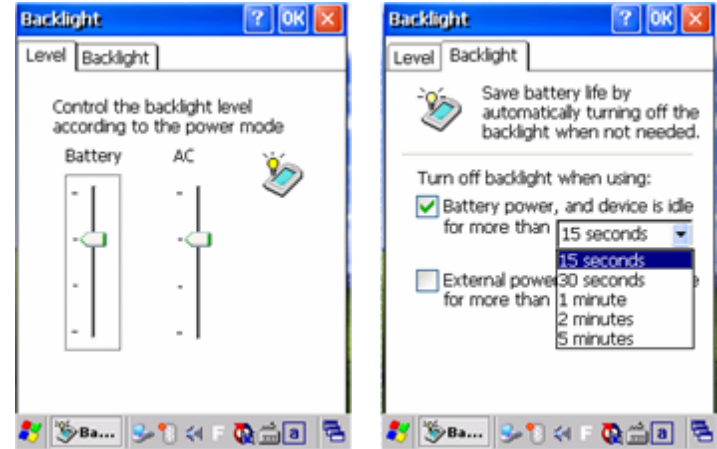
- A cradle of M3 supports charging and USB connection.
- Connecting step of cradle of M3 is as following.
 - Connect charger to USB cradle. (24pin connector)
 - Connect charger to power source. (to wall)
 - Connect USB cable of USB cradle to USB port of desktop PC.
 - Place M3 onto docking cradle then execute Synchronization with Desktop PC.
- The location of USB port can be at the back, front or side of PC and the shape of USB port is identical on Desktop PC and Notebook.
- USB host function is available by putting USB cable into USB port of Cradle.



Connecting to Cradle

How to optimize battery longevity

- When you work outside of office or at home, you will especially want your battery to last as long as possible. There are several tips for longer battery life.
- When you are not using the device, turn it off by pressing LCD power button.
 - When you use the battery power, if you do not touch the keyboard or use a stylus pen or mouse for more than 3 minutes, the device will automatically be shut down. Shorten this time (Settings -> Control Panel -> Power -> Schemes) to have longer battery life.
- LCD Backlight and Keypad Backlight set to the minimum brightness.
 - On Start > Settings > Control Panel > Backlight > Level, scroll down the level of brightness at Battery mode to the minimum. On the Backlight tap, check 'Battery power, and device is idle' and set the time to 15 second.



Backlight Properties

! If battery power is too low, "Too Low Battery" message will appear on the taskbar and start window. In that case, you have to recharge M3 using the charger. Otherwise, it may cause problems in the system.

2. Basic Usage



- Calibration
- Main window
- Screen Rotation
- Infrared Communication
- Bluetooth Communication
- Function Key Mode
- Transcriber/Keyboard

Calibration

- Choose 'Recalibrate' on Control Panel / Stylus / Calibration tab (Fn + 4)
- Screen setup wizard will start. Screen setup wizard calibrates the touch screen.
- Press and hold the (+) mark for more than 1 second and release it. Keep chasing and pressing this (+) mark as it moves around. When all processes are complete, M3 will automatically show the main screen. Check if the LCD touch input works correct after calibration.



Main Window (1)

- Main window consists of Desktop and Taskbar.
- In the background screen, you can see short cut icons of main programs. The details of icons are as follows:

My Device : It displays the folders and files which the device contains.

Recycle Bin: Completely delete or restore files and data.

(After emptying the recycle bin, the files and data can not be restored anymore, so please be cautious)

Internet Explorer: It explores web or intranet.

Media Player: it plays digital audio or video file.

(Media player supports files in ASF, WMA, MP3, WAV format.)

MS WordPad: it is used for creating and managing documents.

My Documents: it saves and displays program, file and data.

- In M3 you can use the same function like clicking right button of the mouse in a desktop PC.
 - If you press and hold the LCD touch panel with the stylus pen, the right button menu will appear.
 - Using the right button menu, you can carry out various tasks such as icon arrangement, the renewal of the background screen, copy/cut/paste of files and data, creating new folders, set-up features.














Main window

Main Window (2)

- The taskbar is designed to be simple and user-friendly.
- Start icon is the starting point of program.
If you point the start menu with the stylus pen, you can see various menus including program, favorites, document, setting, help, and run. If you choose each time, detailed executable programs appear. If you choose and press the requested program, you can run the program of your choice.
- If you select 'Taskbar and Start Menu', you can enable the general options like 'Always on top', 'Auto hide' and 'Show Clock'.
- If you press the quick link icon, the program link menu will appear. Using this function you can operate frequently used programs more promptly.
It consists of Infrared Communication, Alarm, Backlight Control, Task Manager and Wireless LAN.

- Status indication icon on the taskbar

Icon	Details
	Low Battery
	Battery in charging
	Connected to Desktop PC via USB
	Quick link icon
	Phone program icon
	Function status icon
	Bluetooth status/menu icon
	Caps Lock activated icon
	Network connection status
	Status of internet connection via GPRS
	Status of internet connection via WLAN

Screen Rotation

- Rotate the screen to different angle. With Screen rotation, screen can be rotated vertically or horizontally. Desktop screen is not applied with this function to get better rotation, set up the size of desktop screen within 240 x 240 pixels.
- To rotate the screen:
 - Press the quick link icon and select the screen rotation.
 - Run application programs. You can use this function in various programs such as My Computer, Media player, My Documents, Internet Explorer, Microsoft WordPad, Image Viewer, Personal organizer Management, etc.

- ⚠ Some devices might not support screen rotation.
- ⚠ In screen rotation mode, you can only use software keyboard to key in characters.
- ⚠ Sometimes, when you rotate the screen, it would not fit to the size of the screen.
- ⚠ When you see an application program in landscape mode, rotate the screen first then run the application program in order to get a normal view.



Screen Rotation

Infrared Communication

- It carries out infrared communication using OBEX (Object Exchange Protocol). OBEX features provides an effective and simple binary protocol to exchange data in an efficient and convenient manner
- M3 can communicate with desktop, notebook, pocket PC as well as other PDA that has OBEX protocol for the IrDA communication.
- To use infrared communication
 - Locate Infrared communication port to be in series with an infrared (IrDA) port with other device.
 - Press a quick link icon > Infrared communication menu.
 - Infrared communication program is started and you can exchange data.
 - If you want to have a serial communication with the device like printer, it is possible by connecting the COM Port.
 - ※ It is advised to communicate within the shortest distance. Shorter distance makes data transmission faster.



 IrDA port is optional. Device without IrDA port can not use this feature.

Bluetooth Communication (1)

- Bluetooth On/Off
 - The user can on/off the power of Bluetooth (will be called as 'BT' from now on) by selecting the Bluetooth Tray Icon.
 - Switch to ON (📶)/OFF (🔌) by clicking BT ON/OFF on the popped up menu.
- Options Menu
 - Accessibility: Change of BT Device Name, Setting for Discoverable/Connectable Mode and Auto ON.
 - **Device Name**
It is a Name to be shown when other BT Device discovers the user's BT.
 - **Discoverable Mode**
When Discoverable Mode enabled, other BT can discover the user's BT Device.
 - **Connectable Mode**
When Connectable Mode enabled, other BT can connect to the user's BT Device.
 - **Auto On**
By Device Reset or Power On, BT Device will be turned on automatically.
 - Service: Services in BT device.
 - **File Transfer Service**
Enable File transfer service: When enabled, the File transfer between the user's BT and other BT is possible.
Authentication: When enabled, only authenticated users can use File Transfer service.
 - **Push Service**
When enabled, the personal contact information file (Vcard) can be exchanged.
 - **Generic Serial**
When enabled, other BT can get a Serial connection with the user's BT.
 - **Handsfree Gateway**
When enabled, Redial and connection from headset is possible.



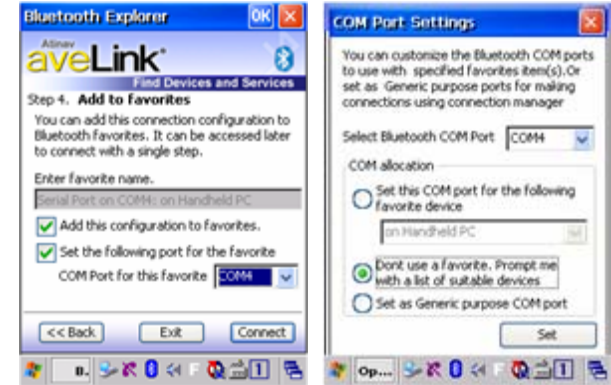
Bluetooth On/Off



Options Menu

Bluetooth Communication (2)

- Supported Service
 - ActiveSync, File Transfer, Business Card Exchange, LAN Access, Generic Serial, PAN Connection, Handsfree connection.
 - Choose the service you want from the Bluetooth Manager and then start connecting procedure.
- Generic Serial
 - User can make a serial connection with other BT device that supports serial communication.
 - On Bluetooth Serial communication, three ports are supported.
 - **Inbound Port:** COM4, **Outbound Port:** COM4, COM9
 - When connecting for Bluetooth Serial communication, user can allocate the com ports for outbound communication.
 - **Set this COM port for the following favorite device.:** When this option is selected, user can allocate the selected COM Port to one of favorite BT devices.
 - **Don't use a favorite. Prompt me with a list of suitable devices. :** When this option is selected, user will be directed either to Favorite page (when there are favorite devices registered) or to Device Search page to select the device for connecting.
 - **Set as Generic purpose COM port.:** When this option is selected, the selected com port is only for generic use. It means that next time the user should make a connection manually using connection manager.

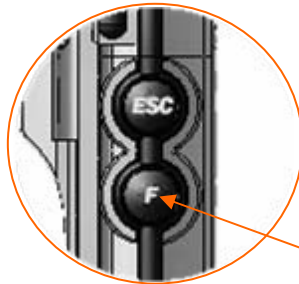


Favorite COM port assignment.

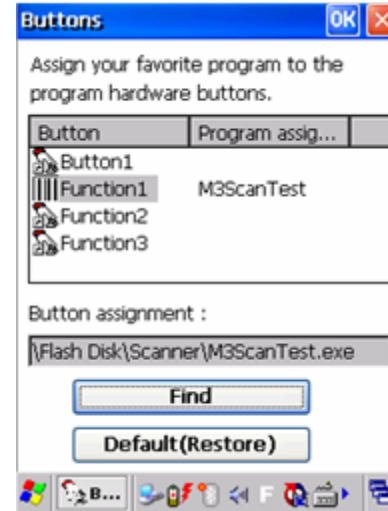
 Bluetooth is optional. Device without Bluetooth module can not use the Bluetooth feature.

Function Key Mode

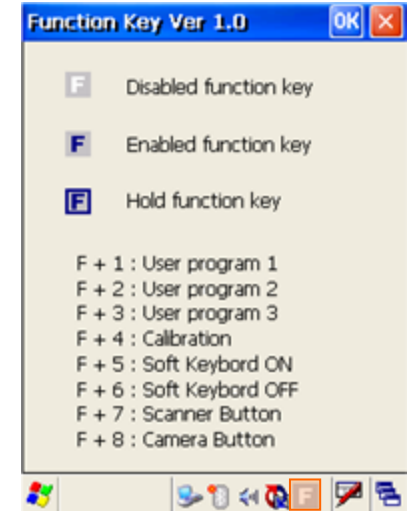
- If you press the down button on the left side, you can change the Function Mode.
 - Pressing the Function key changes the state of Function in turn
 - **F** (Disabled) **F** (Enabled) **F** (Hold-Enabled)
 - How to use the Function Key :
 - Press 1~8 number keys on Function Enable or Hold Mode.
 - Under Start < Programs < Utility < Buttons you can set the 'User programs'.
- ※ You can view help by double clicking **F** on the task bar.



Function Key



Function Key menu



Function Key Help

Transcriber/Keyboard (1)

- Transcriber

- When you want to key in characters in making document or setting, start Transcriber. Using the stylus pen you can draw characters that you want on the screen. This program will recognize the characters by itself and transform them into typeface characters. To start the Transcriber, run the program as the following order: start > program > Transcriber.
- The picture below shows how to start the Transcriber, using the 'keyboard' icon on the taskbar and the picture right-side shows how the Transcriber works in keying in characters on Microsoft Word Pad. When Microsoft Transcriber is running, you will see the 'Input Panel' tool bar pops up.



Input select menu



Transcriber Input Panel

Transcriber/Keyboard (2)

- Keyboard

- **CAP** Upper/lower case Selection

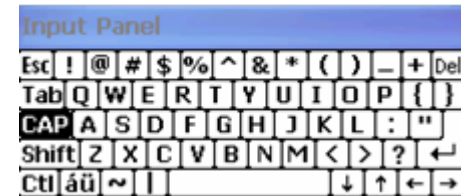
- Press this icon to change upper and lower case letter. If you select upper case, capital letter and its character will appear on the number key pad. It serves the same function with Shift key.

- **Ctl** Hot key Selection

- If you use hot key such as "z", "x", "c" and "v", you can carry out Cancel, Cut, Copy, and Paste, respectively.
 - If you want to change the features of soft keyboard, select keyboard in Go to Start> Setting> Control Panel> Input Panel and click the option you like to set up.

- Input Method

- To carry out character key-in using [keyboard] input, press keyboard icon on the taskbar. In case of {Script Reorganization}, you can key in by activating Transcriber in the following order. Start > program > Transcriber. When you press the keyboard once, it will appear on the screen and one more press will make it disappear.



Keyboard Input Panel

3. How to use Internet

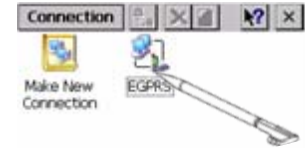
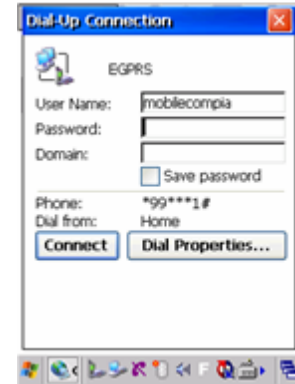
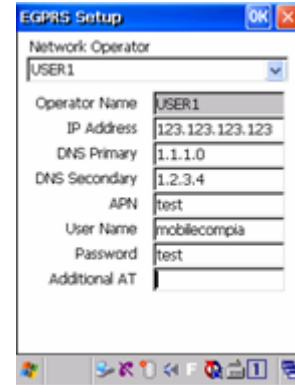


- Via GPRS/EDGE
- Via Wireless LAN
- Via USB
- Via Bluetooth

Via GPRS/EDGE (1)


- How to set GPRS/EDGE
 - Select the 4th icon (configuration menu) on the program menu.
 - On the Configuration menu, select EGPRS settings.
 - Insert setting values for desired network and click ok to save.
 - User can check the saved EGPRS settings at [Start / Settings / Network and Dial-up Connections].
- How to connect to GPRS/EDGE
 - User can connect to EGPRS by double clicking the EGPRS icon at [Start / Settings / Network and Dial-up Connection].
 - When user intends to connect to the Internet (e.g. opening Internet Explorer), Connecting to EGPRS box pops up automatically to let user to connect to EGPRS.
- How to disconnect EGPRS connection
 - Double click the 'EGPRS Tray Icon' on the tray bar.
 - Click disconnect button on 'Connecting to EGPRS' box.

- ⚠ If EGPRS is built in at manufacturing, the network setting is done by default.
- ⚠ If the network setting is deleted by mistake, it can be restored by resetting the device.



GPRS/EDGE Connect/Disconnect

Via GPRS/EDGE (2)

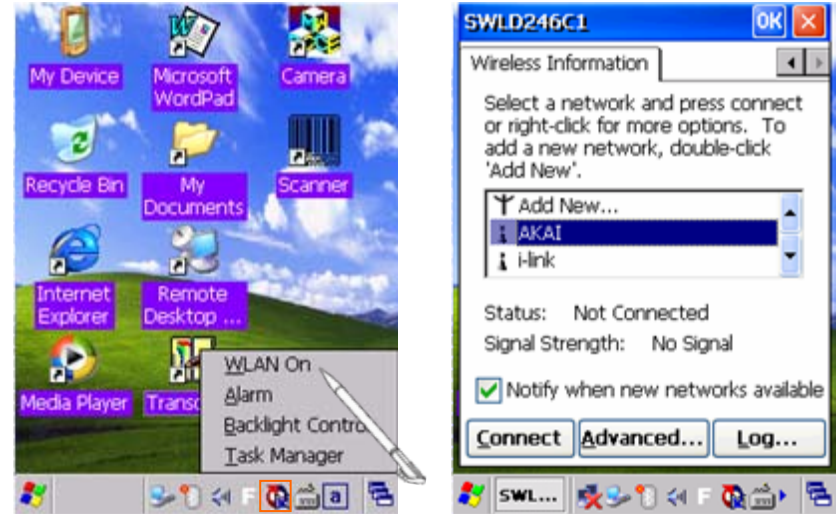
- How to connect the GPRS/EDGE manually
 - Start / Settings / Network and Dial-up Connections or Control Panel / Network and Dial-up Connections.
 - Select make new Connection. Enter the name of connection. check dial-up connection, and press next. (ex. Make Name:GPRS)
 - Select Hayes Compatible on COM1
 - Press [configure..], and set [Device properties] .
 - **Port Settings Tab :**
Set a Baud Rate to 460800. other data remain as the picture below.
 - **Call Options Tab :**
On Extra settings Enter special modem commands "+CGDCONT=1","IP","apn_name" then press OK.
 - After done with configuration, input "*99***1#" in the 'Phone number' edit box and leave all the rest untouched. As last press 'Finish' button.
 - Now the connection icon would have been generated on the 'Network and Dial-UP Connections' Window as the picture below. On the window which pops up by double-clicking on this icon, user needs to input the username and the password, provided by the SIM card or Network provider.
 - Check mark " save password", then press "connect" to finish Internet setting After using Internet, press  button from taskbar to disconnect
 - On the internet explorer, select View >Internet Options and under Autodial name on the Connection Tab, you can choose the name which has been generated. If the configuration setting was not correct, the name would not be displayed.
 - Now you can use internet just by running Internet Explorer without extra procedure for Dial-Up Connecting.




This way of setting is used when there is GPRS/EDGE module installed, but the user does not want to use the mobilecompia's phone program or there is no phone program installed.

Via Wireless LAN

- You can connect to internet via Wireless LAN. Wireless LAN supports IEEE 802.11b and 802.11g.
- How to connect WLAN :
 - Turn on the AP (Access Point) device which supports IEEE 802.11b and 802.11g.
 - Click quick link icon/ WLAN On.
 - On the WLAN connecting program, choose the AP device and click connect.
 - To disconnect WLAN, click quick link icon/ WLAN Off.
- IF you are assigned with correct IP address After connecting to WLAN, you can make use of Internet.



WLAN connecting screen

 Wireless LAN is optional. You can only use WLAN, when the WLAN module is built in to the device.

Via USB

- Using internet via direct USB connection to PC
 - This connection method is used at 'PC connection' menu under control panel. Internet connection can be established by having a partnership with PC using USB ActiveSync. When you want to obtain upgraded program or file from internet, using USB connection can save the communication expense.
- How to connect
 - At ActiveSync connection, please say ok or cancel for partnership request in order to use internet.
 - Please change the Autodial name at Internet explorer > view > internet options > connection in order to have internet via USB.

※ Please make sure that PC has a connection to internet.




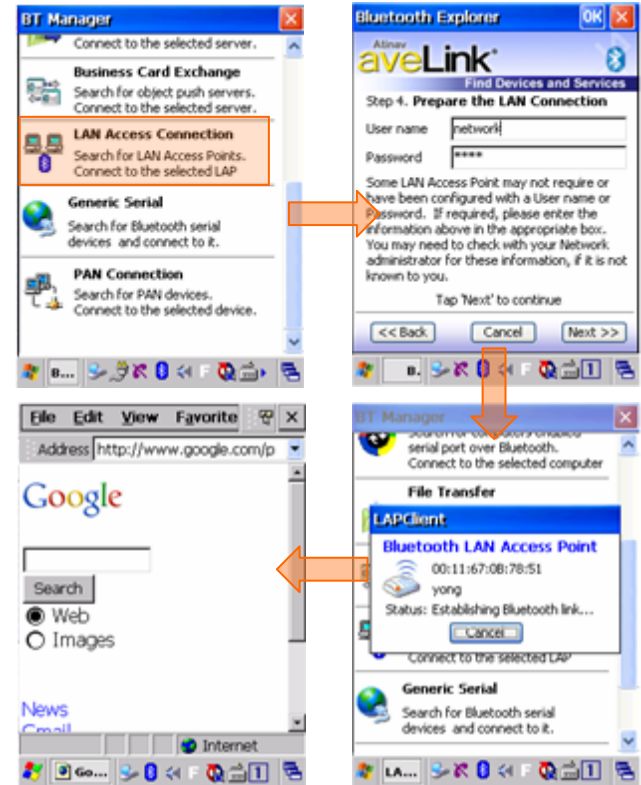
USB connection to PC

Via Bluetooth

- Using internet via Bluetooth

- Please turn on the Bluetooth dongle on PC which has a LAN service ability.
- Please turn on the Bluetooth and click the Bluetooth icon on the tray bar. When the Bluetooth menu appears, choose BT Manager.
- On the BT Manager, please select LAN Access.
- Please follow the instruction on the screen.
 - If User name and password are required at LAN connection, please fill it on the screen, if not, please proceed to connect.
- Run the internet explorer, when LAN connection is established.
- If the LAN connection via Bluetooth successfully established, using internet via Bluetooth is possible.

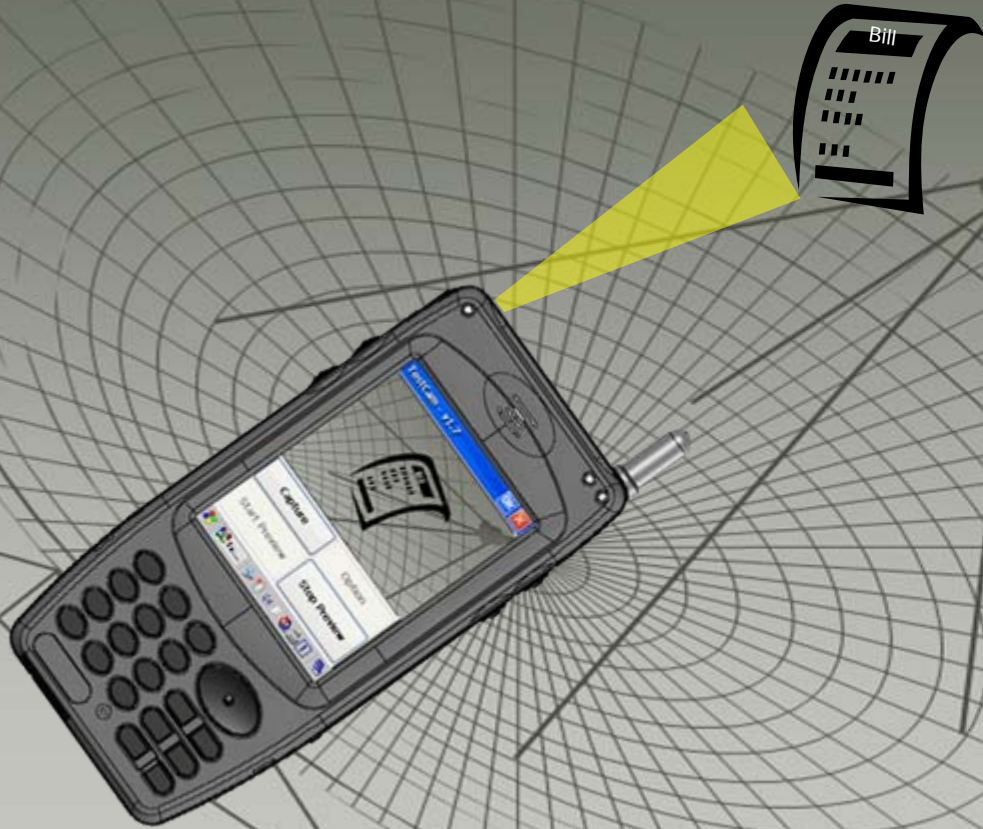
 Bluetooth is optional. Device without built-in Bluetooth can not use Bluetooth service.



Internet connection via Bluetooth

4. ActiveSync

- ActiveSync Introduction
- Installing ActiveSync
- Synchronization of Data
- ActiveSync Troubleshooting



ActiveSync Introduction

- Sync is an abbreviation of “Synchronization” and refers to the process of making data in PDA and desktop computer to be same by linking both data.
 - Sync is an abbreviation of “Synchronization” and refers to the process of making data in PDA and desktop computer to be same by linking both data. When either PDA or PC modifies data, it updates others to the most recent data.
 - Not all the data is synchronized at same time. It follows the option settings of ActiveSync, provided by Microsoft.
- By linking M3 and computer, you can make data in both devices in the same status (synchronization) or install, copy, move, delete programs for business purpose and others.
- It is compulsory to install this program in order to install business programs, synchronize data, back up and synchronize contact numbers in an address book, etc.



Do not connect USB of Cradle to desktop PC before installing Active Sync to desktop PC.. It may cause a desktop PC cannot recognize PDA since Active Sync contains PDA program driver. Make sure to have the step 2 “Your device was not detected” of below installing process.

Installing ActiveSync

- How to install ActiveSync
 - Place Active Sync CD in CD Rom of desktop PC, installation will automatically executed.
 - When clicking [next] button, if [your device was not detected] sign is shown, then click [cancel] button.
 - Connect USB cable from cradle to computer USB port. Then place M3 on cradle after turn the screen on.
 - If [new hardware searching wizard] screen is shown, then click [next]. Now driver will be installed automatically. Click [finish].
 - If [Set Up a partnership] screen is shown, make a partnership, then click [next].
 - If [Setup Complete] is shown, then press [finish] to close the installation.
 - With [Microsoft Active Sync] screen is shown, synchronization of programs that were selected when partnership was made starts.
- What is Partnership ?
 - The certification process that approves data communication between M3 and computer.
 - ※ Microsoft outlook 2000 and above version is able to Sync with M3, however Outlook Express is not reliable.



please re-try the synchronization if connection is disturbed by strong noise or static.

Synchronization of Data

- If you see the Microsoft ActiveSync window in the desktop PC, you can find an option icon. If you click this option icon, taps such as “Sync Options”, “Sync Mode”, “Rules” will appear.
- “Sync Options” is a menu that you can select an item to synchronize.
 - Contact, Appointments, Tasks, File, Channel, etc.
- “Sync Mode” enables you to choose synchronization methods. According to the selected synchronization mode, there are 3 following methods:
 - Continuously while the device is connected: In this mode, if you want to carry out synchronization, connect the device to the desktop computer. ActiveSync will immediately start synchronization and synchronize according to the user’s input of changes in a computer or the device.
 - Only upon connection: If you want to carry out the synchronization after the first synchronization on a manual basis, click Sync.
 - Manually: In this mode, ActiveSync will not run automatically. In order to carry out synchronization, click Sync.
- Synchronization is the process of updating M3 and desktop PC after comparing their data. Any files including personal organizer management data, etc in M3 can synchronize with those in the desktop PC.

- When active Sync is not working
 - Check the USB cable that connect the cradle and desktop PC if properly connected.
 - Check if LCD and power is on.
 - Open the windows by selecting [File>Connection Settings] of ActiveSync program.
 - Check if [Allow USB connection with this desktop computer] is check marked.
 - If it is not checked, please check it and then retry to sync.
 - Try soft / hard reset. Make sure to save all data and close all executing program.
 - Press [start> setting> control panel> system] select [hardware] tap, then double click on device manager. Check if “universal serial bus controllers” or “Window CE USB Devices” has yellow exclamation mark sign underneath of the folder.

※ **If see the yellow exclamation mark sign, try below steps**

1. Double click “ Microsoft USB Sync ” under Windows CE USB Devices folder.
2. Double click “ update ” from Driver tap.
3. From window [device driver update wizard] , press [next] button, then select [search appropriate driver for device], then double click [next].
4. After check “ Microsoft Windows Updates”, press [next].
5. Most updated USB driver is automatically downloaded from MS website via internet.
6. Restart computer and try Sync again.

5. How to use the Phone

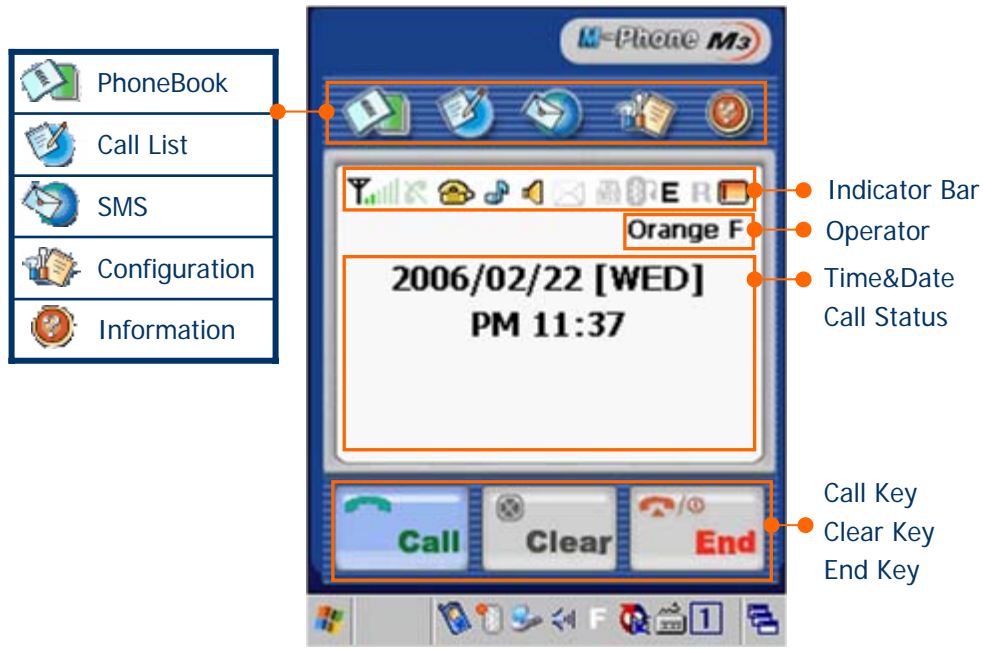


- Init Screen
- Key Pad
- Status icon/display window

Init Screen

How to use the phone

- Phone Main Screen








PhoneBook	It shows Phone Book Dialog.
Call List	It shows recently dialed and received call
SMS	It shows received/Sent SMS and screen to write SMS.
Configuration	It manages settings for Phone and additional service.
Information	It shows S/W, F/W version, IMEI, Phone number
Indicator Bar	It displays the important information of phone. (Signal strength, Bell/Vibration, Security Mode, BT Headset, Roaming and Battery status.)
Status bar	It displays current Data/Time, Call status, Missed message, etc.
Call control	You can input Call, Delete and End key.

Key Pad

- Key Pad



 ~ 	It is used to dial the number and can be used as speed-dial.
	It runs the Phone Program. It can Show and Hide the Phone Program.
 	It inputs '*', '#' symbols. Long press of '*' converts to Manner Mode and Long press of '#' inputs '+' symbol.

Status icon/Display window

- Status Icon



- These are small icons which are located on the top of screen, indicating the state of Phone Program.

	It indicates the signal strength (full state).
	It indicates that there is no signal.
	Ready to call or receive / on the phone.
	Bell state (Bell, Vibration and Vibration & Bell).
	Mute / Unmute while on the phone.
	It indicates that there is SMS Message to read.
	It indicates the state of privacy lock. (Default Password : 0000)
	It indicates the state of BT Connection.
	It indicates the state of Roaming. (Green : Roaming Active)
	It displays the availability of GPRS and EDGE connection
	It indicates the state of Battery.

When battery is low, you will hear the alert sound. If you do not recharge the device immediately after the alert, the phone will be compulsory off. Even though the phone is off, you can still use the PDA.

Phone function

- **How to turn on/off the phone**
 - To turn on the phone
 - While phone is off, press the 'End' button for 2 to 3 seconds.
 - The phone is on with initializing sound.
 - To turn off the phone
 - While phone is on, press the 'End' button for 2 to 3 seconds.
- **Dialing**
 - Insert the numbers using key pad on the phone main screen, and press 'Call' button.
 - If you press the 'Call' button without numbers, the recent call list will be displayed.
if you press the 'Call' button one more time, you can dial to most recently dialed number.
 - You can dial to the selected number by pressing 'Call' button on Phonebook, Call list, SMS list.
 - If the speed-dial is assigned. You can dial to the number by long press of corresponding speed-dial.
 - By long press of button on ear-mic, you can make a call to the recent dialed/received number.
- **Answering**
 - On the receiving call window, you can answer the call by clicking 'Answer' button.
 - On the receiving call window, you can answer the call by pressing ear-mic button.
 - On the receiving call windows, if you press the 'Mute', the bell sound will be off.

Voice Conversation via Bluetooth

H
o
w

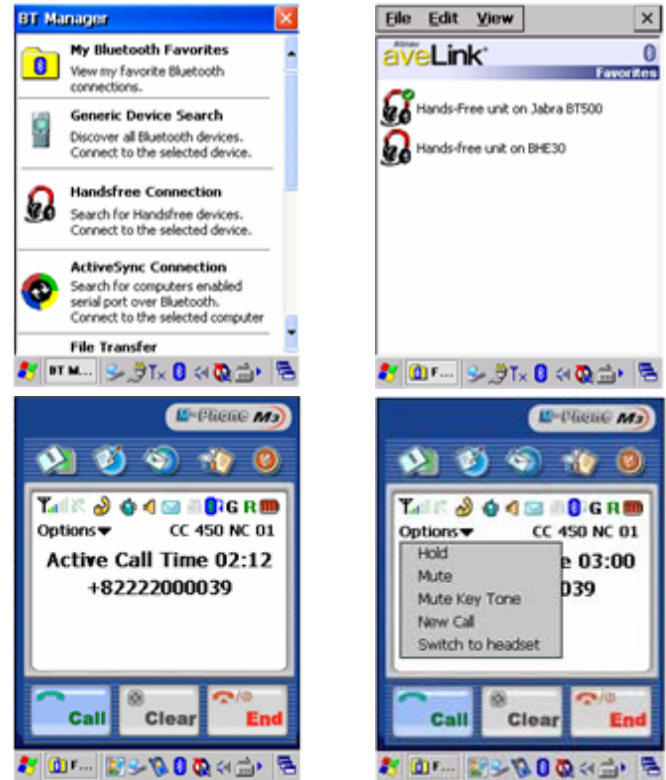
t
o

u
s
e

t
h
e

P
h
o
n
e

- **Connecting with a Bluetooth Headset**
 - 1) Please set the Bluetooth Headset to Pairable mode.
 - 2) Please do BT_ON and select BT Manager.
 - 3) Select Hands free Connection and establish the connection to the Headset.
- **Making a phone call via Bluetooth Headset**
 - 1) Please connect the Headset with Bluetooth device.
 - 2) Using the button on the Headset, you can connect the Headset to Bluetooth device, dialing and answering the call. The call volume can be adjusted using the volume key on the Headset.
 - 3) While calling, you can use the Options Menu of the phone program. If you select 'Switch to Headset', the voice conversation will be preceded via Bluetooth Headset And if you select 'Switch to Phone', the voice conversation will be preceded via the device. (Note: The Bluetooth Connection should be established in advance)



Connection via Bluetooth Headset

SMS send and receive/Configuration

- To receive SMS
 - When SMS is received, the received content will be displayed on the popped up window.
 - In order to check the received SMS, please go to the rec/sent list on the SMS menu and then select the SMS to read.
 - For the unchecked SMS, the mail icon (✉) will be displayed.
- To send SMS
 - To send SMS, please move to SMS message windows and select SMS write tap. Insert the number of receiver or retrieve the number by searching. As last click 'Send' button to send the SMS.
 - The sent message is stored automatically in sent SMS list.
- Configuration
 - Config : You can set Bell, Date Time, SMS, GPRS and CSD.
 - Security : You can set PIN Check, PIN Change, Privacy (Default password: '0000') and Change Password.
 - Phone Settings : You can set Call Diverting, Call Waiting and Network Selection.

6. Usage of Scanner/Camera



- How to use Scanner
- How to use Camera

How to use Scanner

- How to use scanner
 - Usage of 1D Scanner



Correct way

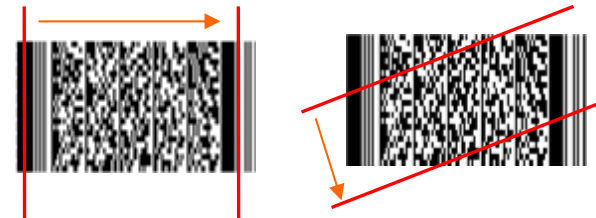


Incorrect way

- Usage of 2D Scanner



Correct way



Incorrect way

- ⚠ Scanner is optional. You can not use scan feature with no scanner enabled device.
- ⚠ 2D Barcode Scanner is optional. Only with 2D Barcode scanner enabled device, you can do 2D barcode scan.

How to use Camera

- How to use the Camera demo program

- To turn on the camera
 - Run the program and press the 'Start Preview' button.
- To capture the image
 - You can take picture by pressing the 'Capture' button after pressing 'Start Preview' button.
 - The captured image will be saved in the path that you set on the option menu.
- Flash On/Off
 - On Preview mode, you can turn on/off Flash by pressing Flash On/Off button.
- To turn off the camera
 - You can turn off the camera by pressing 'Stop Preview' after pressing 'Start Preview' button.
- Camera Option menu
 - On option menu, you can set the settings for Image and Save option.



Camera demo program/option window

- ⚠ Camera is optional. On the device with no built-in camera, Camera function can not be used.
- ⚠ On the device without camera flash, you can use the flash function.








7. Usage of Pims



- Today
- InfoBox
- SmartMemo
- SWRecorder

Today

- To get the Today window, select Start > Programs > Pims > Today.
 - Today window displays the summarized information of user's day schedule. Today window consists of sound, time, date, schedule, task, user information and manage item. If you click each item, you can view and edit it.
 - The explanation of each icon on Today window is as following:

	It displays the property of Volume and Sound.
	It displays the property of Time and Date.
	It displays the day schedule of user.
	It displays the day task of user.
	It displays the property of owner.
	It displays the property of power.
	It displays the property of system.

- Owner Information

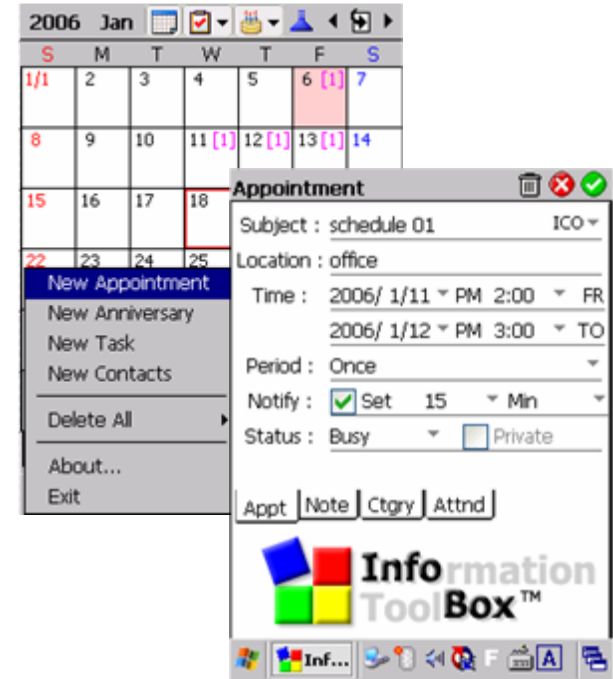
- It is used to get an information of M3 owner's name, company, address, telephone number and note. On Today window only owner's name and telephone number will be displayed.
- In order to create or edit the owner's information, tap on the owner information section. At the owner property window, you can insert each information of owner and if you wish to access to network resource, insert username and password on Network ID dialog.



Today Window

InfoBox (1)

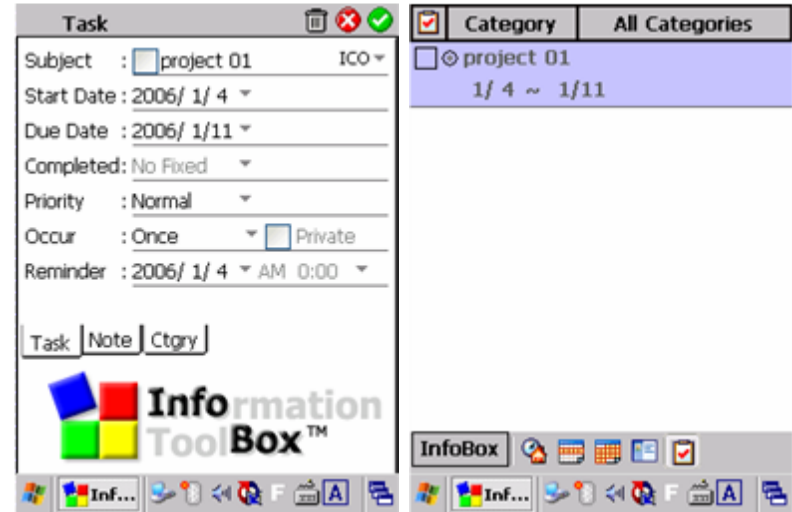
- InfoBox lets user to manage appointment, task and contacts easily with one application.
 - InfoBox provides the capability to add, edit and delete appointment, anniversary, task and contacts.
 - In InfoBox, you can view appointment, anniversary and task daily, weekly and monthly.
 - The infoBox can be synchronized with MS Outlook item by item.
- Appointment, Anniversary Add/Edit/Delete
 - Appointment, Anniversary Add/Edit
 - In order to make a new appointment/anniversary, tap on 'InfoBox' at the left bottom of InfoBox window or press the desired date for awhile and select 'New appointment/anniversary'.
 - In order to edit existing appointment/anniversary, press the desired item from the list for awhile and select 'Edit Appointment'.
 - To save and exit the appointment/anniversary input/edit window, press the icon(✔) on the right-up side.
 - Appointment, Anniversary View/Delete
 - Once the appointment/anniversary data is saved, you can view it by pressing the relevant date..
 - To delete the saved appointment/anniversary, press the desired data from the list for awhile and select 'Delete Appointment'.
 - On the appointment/anniversary edit window, you can delete it by pressing the icon(✖).
 - To delete entire schedule data (appointment, anniversary), select 'Delete all' from the 'InfoBox' Menu on the left-down side.







InfoBox Menu/Add appointment screen

InfoBox (2)

- Task Add/Edit/Delete
 - Task Add/Edit
 - In order to make a new task, tap on 'InfoBox' at the left bottom of InfoBox window or press the desired date for awhile and select 'New Task'.
 - You can also input a new task by pressing the Icon(☑) on the tool bar and then press the icon(☑) on the left-up side of task list.
 - In order to edit existing task data, press the desired item from the list for awhile and select 'Edit Task'.
 - To save and exit the Task input/edit window, press the icon(✔) on the right-up side.
 - Task View/Delete
 - Once the Task data is saved, all the date within the task period will be marked with dot (•) on the view screen.
 - To delete the saved Task, press the desired data from the list for awhile and select 'Delete Task'.
 - On the Task edit window, you can delete it by pressing the icon(☒).
 - To delete entire task data, select 'Delete all' from the 'InfoBox' menu on the left-down side.



Task Add screen/Task list screen

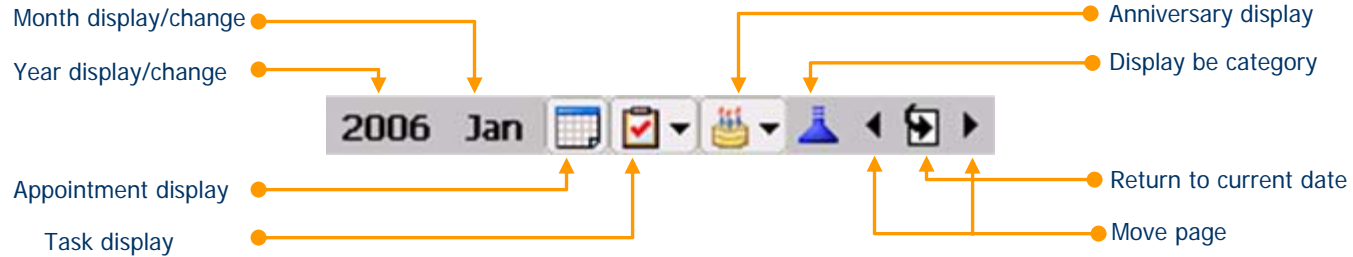
- **Contacts Add/Edit/Delete**
 - **Contacts Add/Edit**
 - In order to make a new contact, tap on 'InfoBox' at the left bottom of InfoBox window and select 'New Contacts'.
 - You can also input a new contacts by pressing the icon() on the tool bar and then press the icon() on the left-up side of contact list.
 - In order to edit existing contacts data, press the desired item from the list for awhile and select 'Edit Contacts'.
 - To save and exit the contacts input/edit window, press the icon() on the right-up side.
 - **Contacts View/Delete**
 - Once the contacts data is saved, the data will be displayed on the contacts list.
 - To delete the saved contacts, press the desired data from the list for awhile and select 'Delete Contacts'.
 - On the contacts edit window, you can delete it by pressing the icon().
 - To delete entire contacts data, select 'Delete all' from the 'InfoBox' menu on the left-down side.



Contacts add screen/Contacts list screen

InfoBox (4)

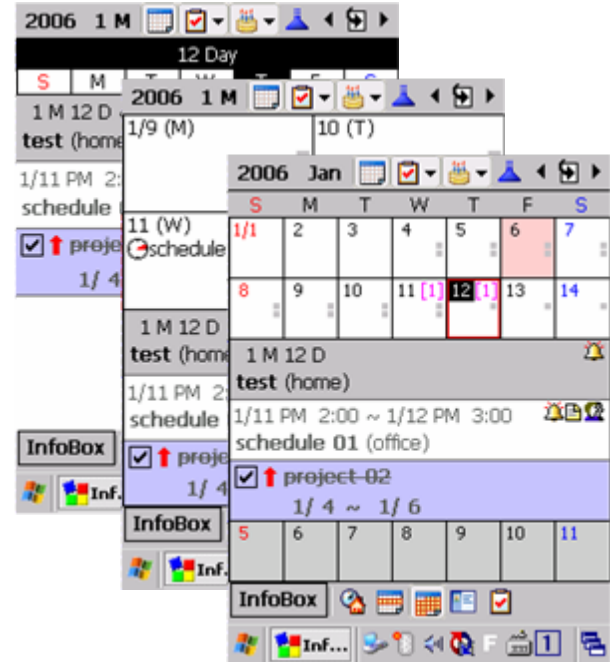
- **Toolbar**



- **Year display / change**
 - You can change the year by selecting it from the list (if you press 'Select Year', you can input it yourself.)
- **Month display / change**
 - You can change the month by selecting it from the list.
- **Appointment display**
 - When this icon is pressed, the saved appointment will be displayed on daily/weekly/monthly list.
- **Task display**
 - When this icon is pressed, the saved task will be displayed on daily/weekly/monthly list.
 - When the 'down sign' beside task icon is pressed, you can view the task data by priority or completion.
- **Anniversary display**
 - When this button is pressed, the saved anniversary will be displayed on daily/weekly/monthly list.
 - When the 'down sign' beside anniversary icon is pressed, you can view the anniversary data by category.
- **Display by category**
 - When this button is pressed, the appointment, anniversary, task data will be displayed by category on daily/weekly/monthly list.
- **Move Page**
 - When the left or right move page button is pressed, the daily/weekly/monthly list will be moved to before or next daily/weekly/monthly list.
- **Return to current date**
 - When this button is pressed, you can return to the day of today which has been set on the system.
 - The day of today will be marked with red ground on the daily/weekly/monthly view.

InfoBox (5)

- Daily view
 - When daily view is selected, the relevant appointment, anniversary and task on that day will be displayed.
 - Appointment, Anniversary and Task will be displayed on the list with white, gray and blue ground respectively.
- Weekly view
 - When weekly view is selected, the relevant appointment, anniversary and task on that week will be displayed.
 - If you press the relevant date, Appointment, Anniversary and Task will be displayed on the list with white, gray and blue ground respectively.
 - Appointment, Task and Anniversary will be indicated with icon(🕒), icon(📅) and black ground respectively on the relevant date.
- Monthly view
 - When monthly view is selected, the relevant appointment, anniversary and task on that month will be displayed.
 - If you press the relevant date, Appointment, Anniversary and Task will be displayed on the list with white, gray and blue ground respectively.
 - Appointment, Task and Anniversary will be indicated with number of appointments in red color, icon(📅) and black ground respectively on the relevant date.



Daily, Weekly, Monthly View

SmartMemo (1)

- Settings

- Category

- Using menus above the window, you can create, edit and delete the category.
 - Using the left-up menu, you can either create new main category or delete existing main category (by long press of the category name).
 - On each main category (except 'No category'), you can create a sub category using 'create' menu.

- Program Configuration

- When you press the Option menu on the bottom of window, you can set the location to save data and the default category which the program opens at.
 - When the menu animation is active, the movement of menu box on new memo window will somewhat softer.

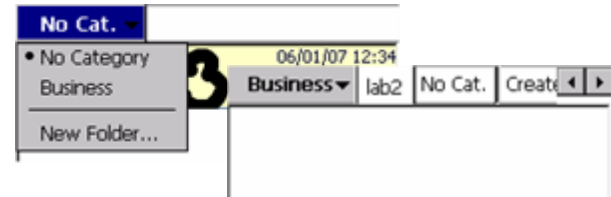
- Memo Menu

- **Color Change**

- If you press the palette icon(🎨) on the left-bottom of window, you can change the pen color.
 - You can choose the pen color from the selection on the left and using the right scroll bar, you can adjust the brightness of color.

- **Change of pen thickness**

- You can adjust the pen thickness using the thickness icon(•).



Category setting Menu











Color change/ Pen thickness

Smart Memo (2)


- Memo Menu (Continue from previous page)

- **Mode Change**



- If you press the left-down pen icon(), you can choose the mode.

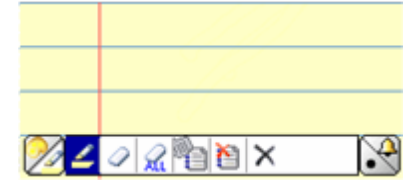
 	Opaque/Transparent pen
 	Partial/Total erase
	Erase current page
	Delete current page
	Delete entire memo
	Save and Exit

- **Alarm setting**

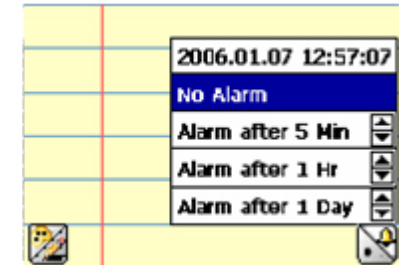
- If you press the alarm icon() on the right-bottom side, you can set the alarm for the relevant memo.
 - You can check the current time from the alarm menu.

- **Page Move / Exit**

- If you press the icon() on the right-above side, you can move from page to page. (Maximum 10 pages)
 - The current page you can check with page number on the right-above of page.
 - To save and exit, you can press the icon() on the right-above.



Mode change menu

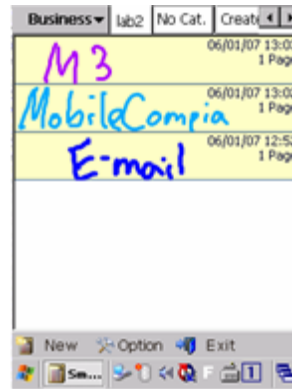


Alarm setting menu

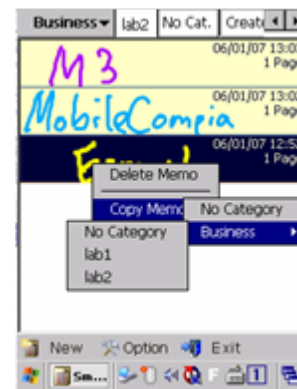
Smart Memo (3)

- Writing a Memo / Memo List

- How to write a memo
 - On the new memo page, you can write a memo using stylus pen.
- Memo List
 - On the memo list, you can check the saved date and the number of pages.
 - You can delete, copy and move the memo by pressing the relevant memo for awhile.



Writing a Memo / Memo list

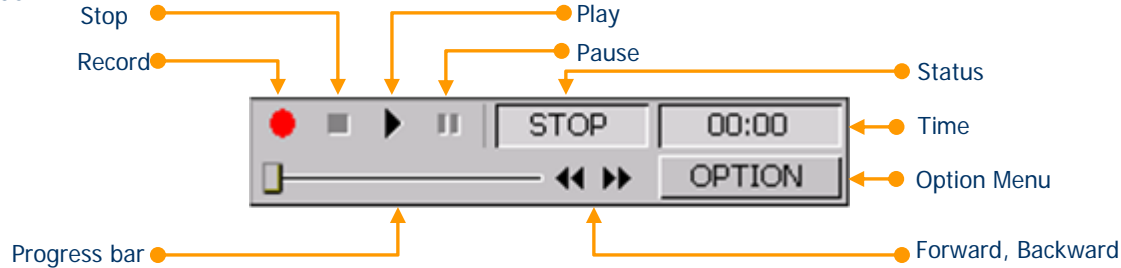


Memo list

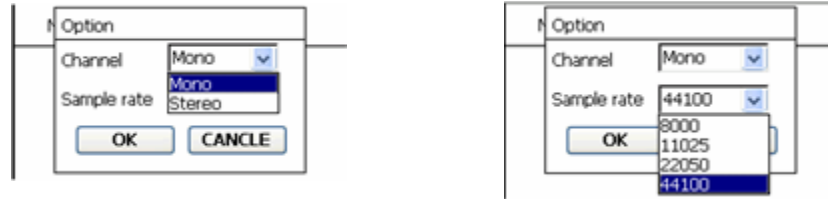
SWRecorder (1)

- Settings

- Tool bar



- On the toolbar, you can play, stop, record, forward, backward and move. If you press the option menu, you can set the channel and sample rate.
- High sample rate raises the quality of recording, but it requires bigger file capacity.



Option Menu screen

SWRecorder (2)

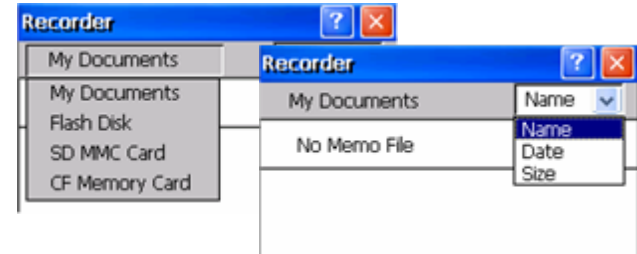
- Settings (Continue from previous page)

- Saving / Sorting

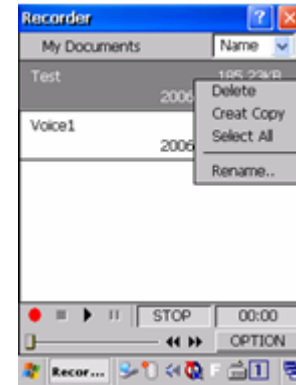
- You can save the recorded data to My Documents, Flash Disk, SD MMC Card, and CF Card. The data will be saved as 'ave' file under Voice Memo folder on the relevant saving path.
 - On the menu left-above, you can select the saving path.
 - You can sort the list by name, by date and by size. You can select this on the right-above drop down menu.

- Function / List

- By pressing the record button, you can start the voice recording.
 - To stop the recording, you need to press the stop button.
 - To play the recorded data, you first need to choose the relevant data from the list and press the play button.
 - While playing you can move the place to play with forward and backward button. It is also possible by moving the progress bar.
 - To pause while playing, you need to press the pause button and to play again, just press the pause button one more time.
 - If you press a recorded data on the list for awhile, you can delete, create copy, select all and rename it.



Saving / Sorting Menu screen



List Menu screen

8. Usage of Application and Utility programs



- Calculator
- Image Viewer
- MS-Backup
- Menu Settings
- Touch Protector

Calculator/Image Viewer

- Calculator
 - M3 offers a calculator application. Using this application you can do a simple calculation.
 - To run the calculator, select Go to start > Programs > Application > Calculator.
- Image Viewer
 - You can see the image file using the image viewer.
 - To run the image viewer, select Go to Start> Programs> Application Programs> Image Viewer. The viewer supports various image files such as jpg, gif, bmp, tif, png, etc.

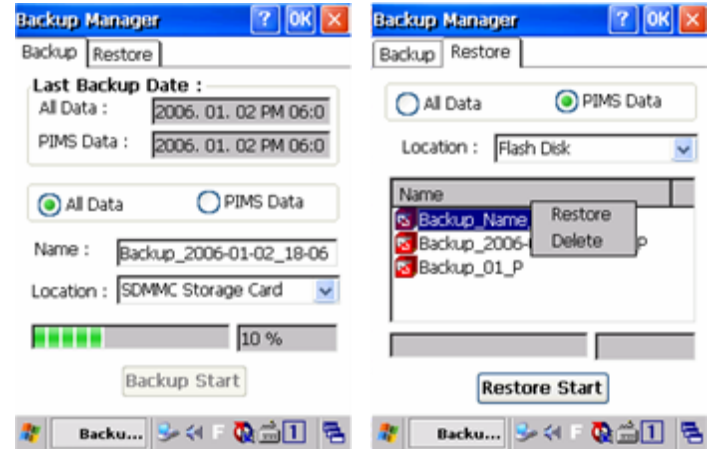


Calculator



Image Viewer

- Backup
 - How to set the saving location and name.
 - Under the Backup tap On the Backup Manager window, you can assign the saving location to Flash Disk, SD MMC Card and CF Card.
 - In the Name box, you can input the backup name to save with.
 - You can check the latest backup date under the 'Last Backup Date' box.
 - How to backup
 - All Data : All the file, registry and Pims data will be backed up except Flash Disk
 - PIMS Data : Only Pims data will be backed up.
 - Once you have completed with type, name and location setting, you can start the backup by pressing the 'Backup Start' button.
- Restore
 - How to restore
 - Under the Restore tap on the Backup Manager window, you can restore the data by pressing the 'Restore Start' button after setting the type, Location and the file name to be restored. When the restore is complete, the device will restart automatically.
 - You can delete or restore the backup data by double clicking the relevant file on the list.



Backup, Restore screen

Menu Settings/Touch Protector

- Menu Settings
 - In the Menu, you can select the programs to be included in the favorites.
 - The installed programs will automatically appear on the program list. Check the check box of the program to be added.
 - You can see the added item in Start>Programs>Favorites
- Touch Protector
 - This utility is useful for protecting a touch screen being pressed while other application is in operation.



Touch Protector is activated

Safety Information

1 . SAFETY INFORMATION FOR FIXED WIRELESS TERMINALS

.POTENTIALLY EXPLOSIVE ATMOSPHERES

Turn your phone OFF when in any area with a potentially explosive atmosphere and obey all signs and instructions. Sparks in such areas could cause an explosion or fire resulting in bodily injury or even death.

INTERFERENCE TO MEDICAL DEVICES

Certain electronic equipment may be shielded against RF signal from your wireless phone. (pacemakers, Hearing Aids, and so on) Turn your phone OFF in health care facilities when any regulations posted in these areas instruct you to do so. RF signals may affect improperly installed or inadequately shielded electronic system in motor vehicles.

.EXPOSURE TO RF ENERGY

Use only the supplied or an approved replacement antenna. Do not touch the antenna unnecessarily when the phone is in use. Do not move the antenna close to, or touching any exposed part of the body when making a call.

SAFETY INFORMATION FOR RF EXPOSURE

Body worn operation

This device was tested for typical body-worn operations with the back of the phone kept 15 mm. from the body. To maintain compliance with FCC RF exposure requirements, use only belt-clips, holsters or similar accessories that maintain a 15 mm. separation distance between the user's body and the back of the phone, including the antenna. The use of belt-clips, holsters and similar accessories should not contain metallic components in its assembly. The use of accessories that do not satisfy these requirements may not comply with FCC RF exposure requirements, and should be avoided.

SAR INFORMATION

THIS MODEL PHONE MEETS THE GOVERNMENT'S REQUIREMENTS FOR EXPOSURE TO RADIO WAVES.

Your wireless phone is a radio transmitter and receiver. It is designed and manufactured not to exceed the emission limits for exposure to radiofrequency (RF) energy set by the Federal Communications Commission of the U.S. Government. These limits are part of comprehensive guidelines and establish permitted levels of RF energy for the general population. The guidelines are based on standards that were developed by independent scientific organizations through periodic and thorough evaluation of scientific studies. The standards include a substantial safety margin designed to assure the safety of all persons, regardless of age and health. The exposure standard for wireless mobile phones employs a unit of measurement known as the Specific Absorption Rate, or SAR. The SAR limit set by the FCC is 1.6 W/kg. *

Tests for SAR are conducted with the phone transmitting at its highest certified power level in all tested frequency bands. Although the SAR is determined at the highest certified power level, the actual SAR level of the phone while operating can be well below the maximum value. This is because the phone is designed to operate at multiple power levels so as to use only the power required to reach the network. In general, the closer you are to a wireless base station antenna, the lower the power output. Before a phone model is available for sale to the public, it must be tested and certified to the FCC that it does not exceed the limit established by the government adopted requirement for safe exposure. The tests are performed in positions and locations (e.g., at the ear and

worn on the body) as required by the FCC for each model. The highest SAR value for this model phone when tested for use at the ear is **0.199 W/Kg** and when worn on the body, as described in this user guide, is **0.595 W/Kg**. (Body-worn measurements differ among phone models, depending upon available accessories and FCC requirements). While there may be differences between the SAR levels of various phones and at various positions, they all meet the government requirement for safe exposure. The FCC has granted an Equipment Authorization for this model phone with all reported SAR levels evaluated as in compliance with the FCC RF exposure guidelines. SAR information on this model phone is on file with the FCC and can be found under the Display Grant section of <http://www.fcc.gov/oet/fccid> after searching on **FCC ID: U7XMC-6500S**.

Additional information on Specific Absorption Rates (SAR) can be found on the [Cellular Telecommunications Industry Association \(CTIA\) website at http://www.wow-com.com](http://www.wow-com.com). * In the United States and Canada, the SAR limit for mobile phones used by the public is 1.6 watts/kg (W/kg) averaged over one gram of tissue. The standard incorporates a substantial margin of safety to give additional protection for the public and to account for any variations in measurements.

U.S.A.

***U.S.FEDERAL COMMUNICATIONS
COMMISSION***
**RADIO FREQUENCY INTERFERENCE
STATEMENT**

INFORMATION TO THE USER

NOTE : This equipment has been tested and found to comply with the limits for a Class B digital device pursuant to Part 15 of the FCC Rules. These limits are designed to provide reasonable protection against harmful Interference in a residential installation This equipment generates, uses, and can radiate radio frequency energy and, if Not installed and used in accordance with the instructions, may cause harmful Interference to radio communications. However, there is no guarantee that interference will not occur in a particular Installation. If this equipment does cause harmful interference to radio or television reception, which can be determined by turning the equipment off and on, the user is encouraged to try to correct the interference by one or more of the following measures:

- *- Reorient or relocate the receiving antenna.
- Increase the separation between the equipment and receiver.
- *- Connect the equipment into an outlet of a circuit different from that to which the receiver is connected.
- *- Consult the dealer or an experienced radio/TV technician for assistance.

Changes or modification not expressly approved by the party responsible for Compliance could void the user's authority to operate the equipment. Connecting of peripherals requires the use of grounded shielded signal cables.

**FCC Compliance
Information**

This device complies with Part 15 of FCC Rules.
Operation is subject to the following two conditions:

- (1) This device may not cause harmful interference, and
- (2) This device must accept any interference received.
Including interference that may cause undesired operation.