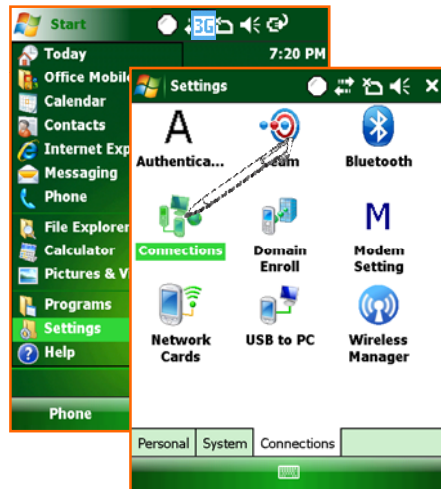
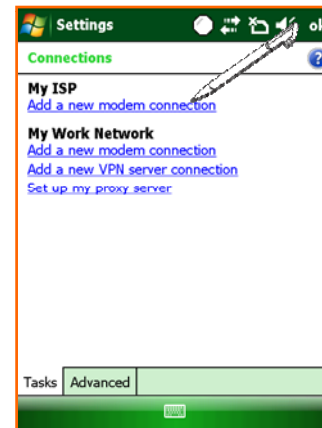


Via HSDPA (1)

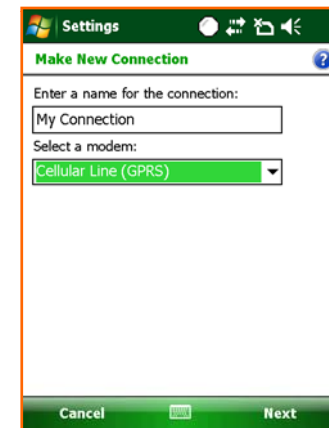
- To connect to the Internet via Wireless WAN (1)



Tab 'Start > Settings > Connections'



Select 'Add a new modem connection' of 'My ISP' in the 'Connections'.



Put the name you want into the 'Enter a name for the connection'. Then select the 'cellular Line(GPRS)' in the 'Select a modem'.

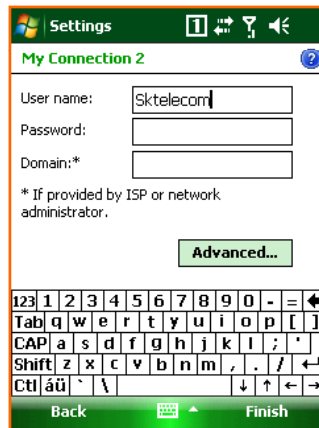
- ⚠ WWAN service is optional.
- ⚠ It is not available in the device which does not have WWAN module installed.

Via HSDPA (2)

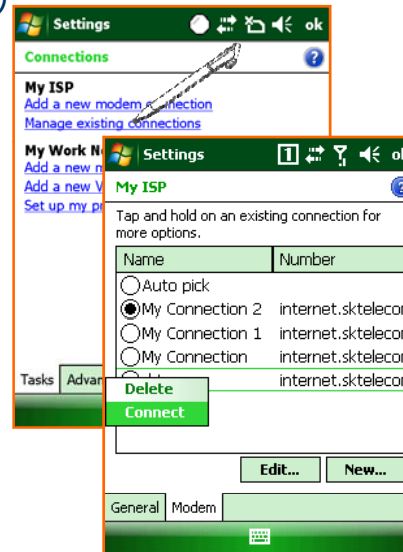
- To connect to the Internet via Wireless WAN (2)



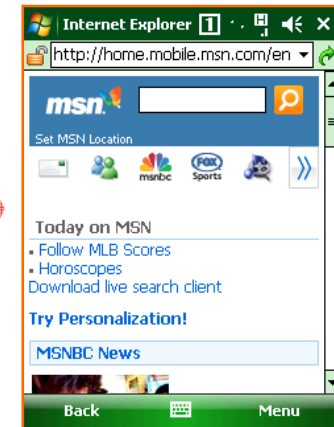
Input the Access point name suitable to the SIM Card / Operator company of Network then Tab the 'Next'.



Tap the 'Finish' after input the User name and password according to the setting. (In some cases, it is required to set IP address at the advanced menu.)



Select the 'Manage existing connections' on the Connections. Choose the ISP which you want to connect to as picture above. * The saved settings automatically applied at connecting.

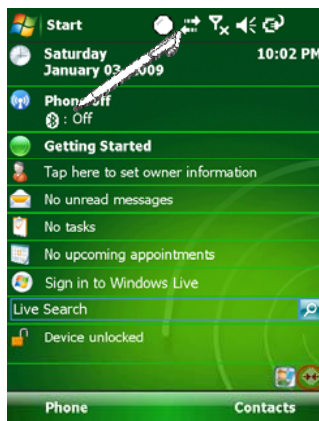


You can explore the Internet using WWAN connection.

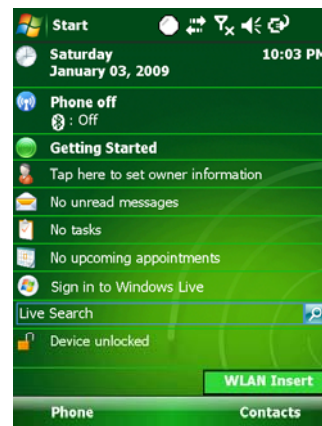
Via Wireless WLAN (1)

- You can use the Wireless Network Via Wireless LAN.
- MM3 supports IEEE 802.11a, IEEE 802.11b and 802.11g.
- To connect the Wireless LAN (AP must be on and functioning)

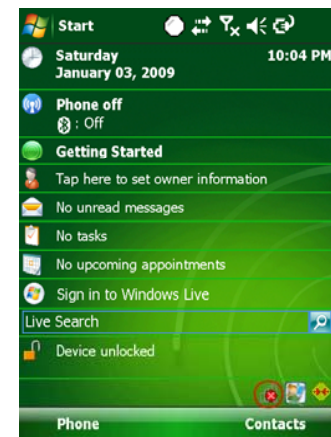
To connect directly on the Main Screen



On the Today Main screen, you select Wireless state bar or go to 'Start > Settings > Connections>' Wireless Manager.



Tap the WI-Fi on the 'Wireless Manager' to turn WLAN on.

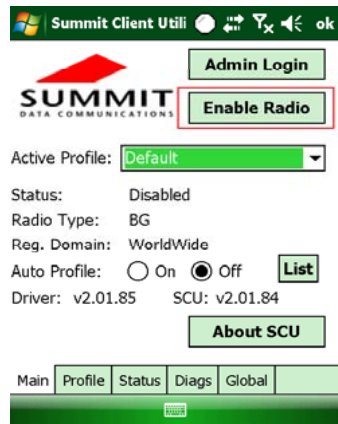


When the dialogue box is appeared, Select the AP you want and then, you can connect the Network with it.

⚠ Wireless LAN is optional. You can only use WLAN, when the WLAN module is built in to the device.

Via Wireless WLAN (2)

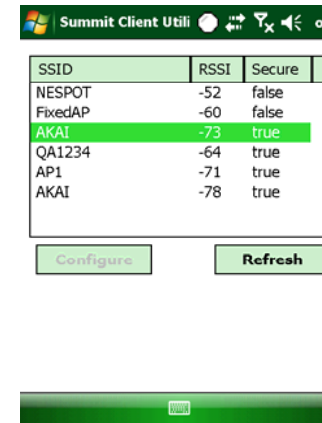
- To connect via Wi-Fi menu



On the settings screen, you select Wi-Fi Icon.
 You can also tap Start > Settings > Connections>Wi-Fi.



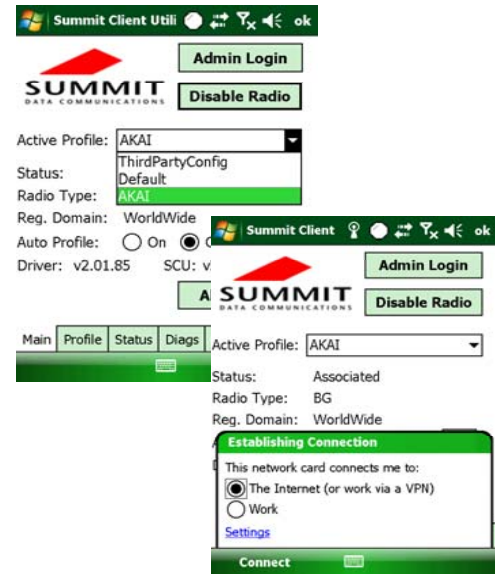
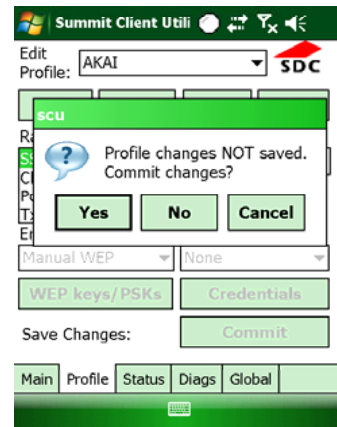
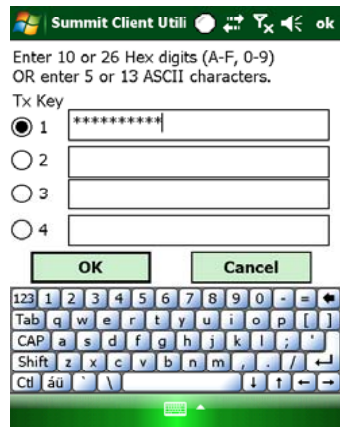
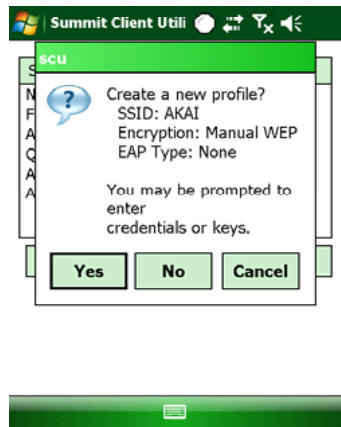
Configure the connect type then click the 'Next'.



After configure Network authentication, tap the 'Finish'. You can see the wireless Networks available.

Via Wireless WLAN (3)

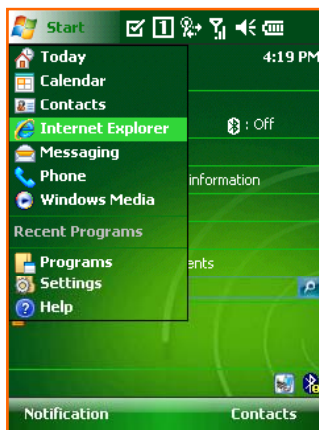
- Continue from the last page
 - Configure DHCP / Static IP



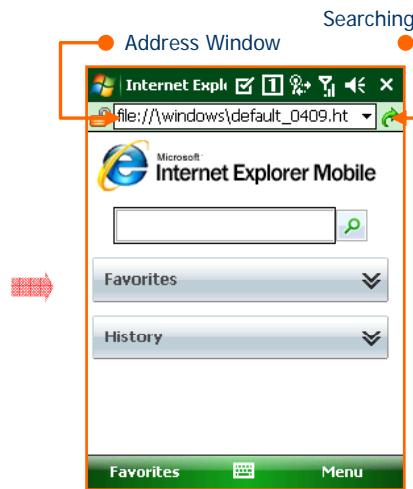
Browsing the Web Site (1)

- Microsoft Internet Explorer
 - Via Wireless WAN , Wireless LAN and Active sync connection, you can browse the web.
 - You can download programs and files by accessing the Internet.

To use the Internet Explorer



Tap 'Start > Internet Explorer



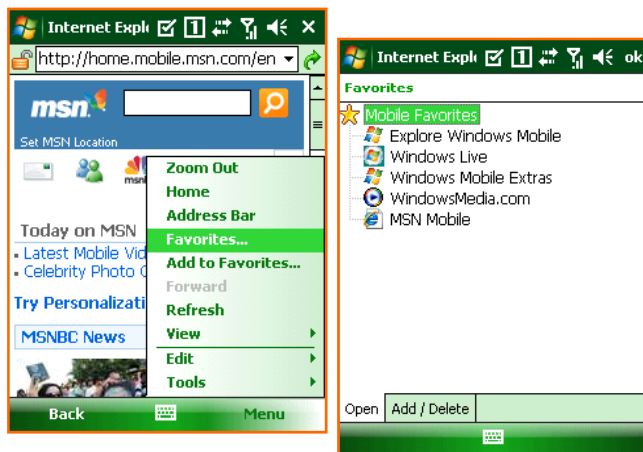
This is the Internet Explorer processing screen.



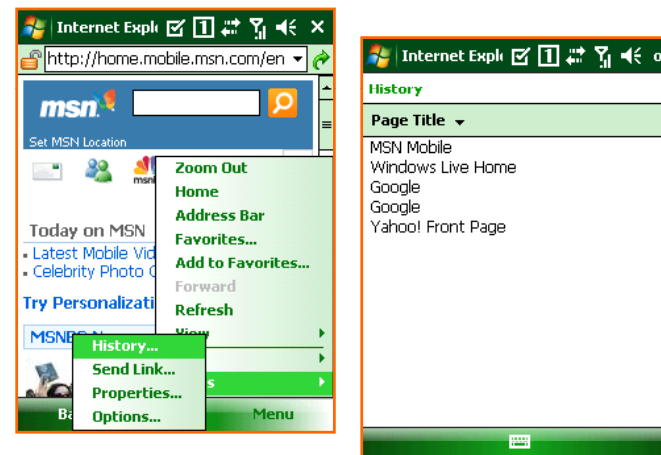
Input the address you want on the address window in upper of the screen, then click the 'search'. It will try to connect to that web address via Wireless network that is connected.

Browsing the Web Site (2)

- Continue from the last page.



On the 'Menu > Favorites...' you can see the list of sites that you have saved and browse to it directly. The favorite page is like the picture above.

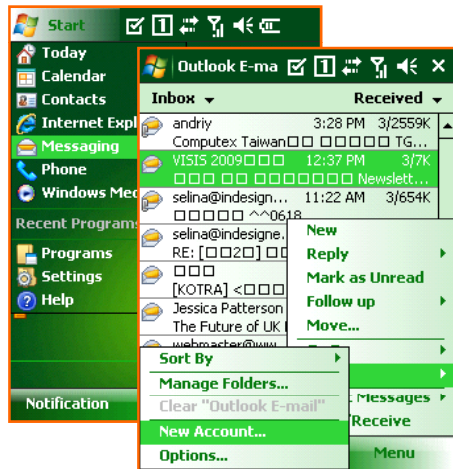


On the Menu > History... You can see the list of sites that you have recently visited. The history page is like the picture above.

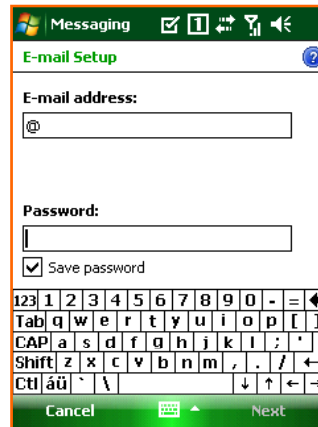
 See the 'Start > Help' if you want to know more about how to use the Internet Explorer

Browsing the Web Site (3)

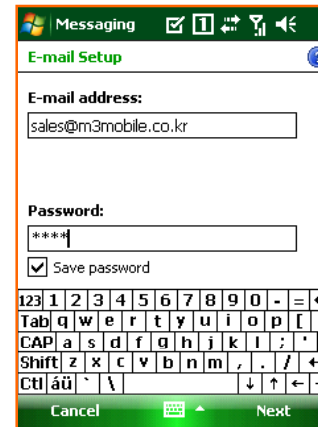
- To set up an e-mail account



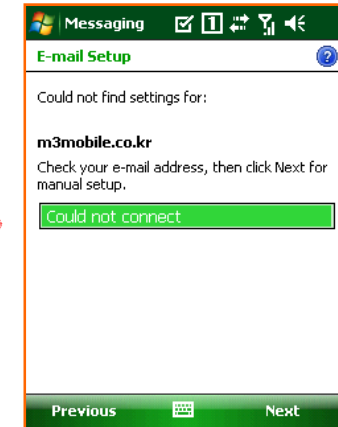
Process the 'Start > Messaging'. Select the 'Menu > Tools > New Account...in the outlook E-mail box.



Set an E-mail provider for 'other' then tap 'Next.'



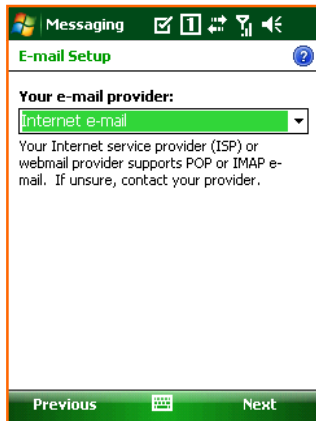
Input the E-mail address on the Enter e-mail address , then tap 'Next '.



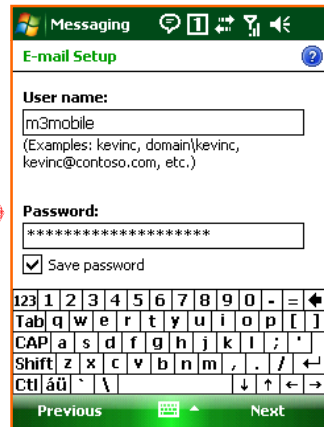
When the Status is for completed, tap the 'Next'.

Browsing the Web Site (4)

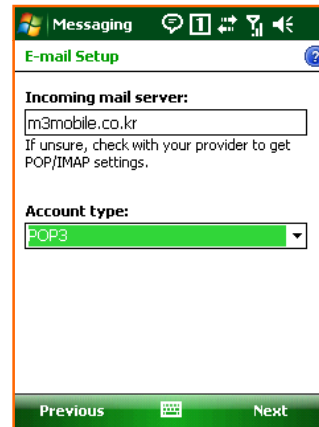
- Continue from last page



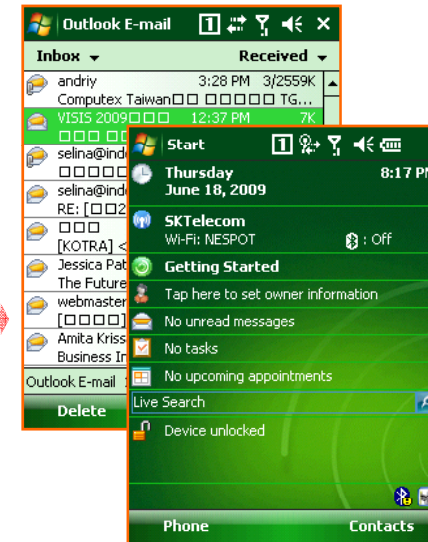
Set an E-mail provider for 'other' then tap 'Next'.



Select the Account Type and put the Name then tap 'Next'.



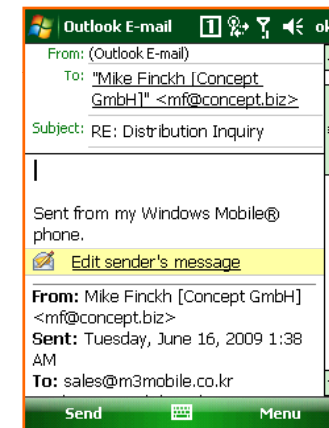
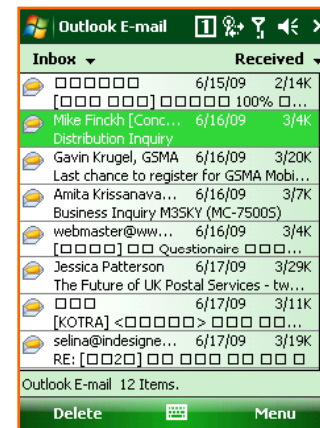
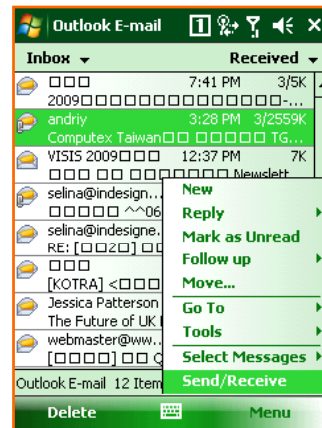
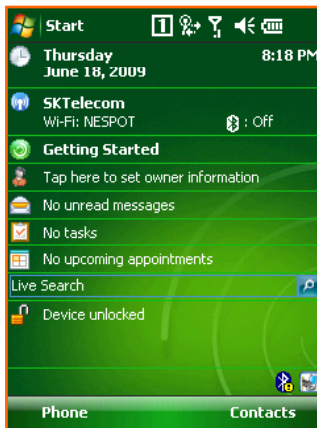
Input the 'Incoming mail, Outgoing mail, Domain' then select 'Finish'.
* For detailed setting menu, please click 'Options'.



After finishing the setting you can send and receive E-mail using the e-mail account.

Browsing the Web Site (5)

- To send and receive an E-mail



< To receive an e-mail >
 Select the 'Message' on the 'Today'
 Select the 'Send / Receive' in the 'Menu' and check the received mail.

<To send an e-mail >
 After process the 'Message' program , select the 'New' .
 You can send an e-mail when you select the 'Send' after writing a new e-mail.

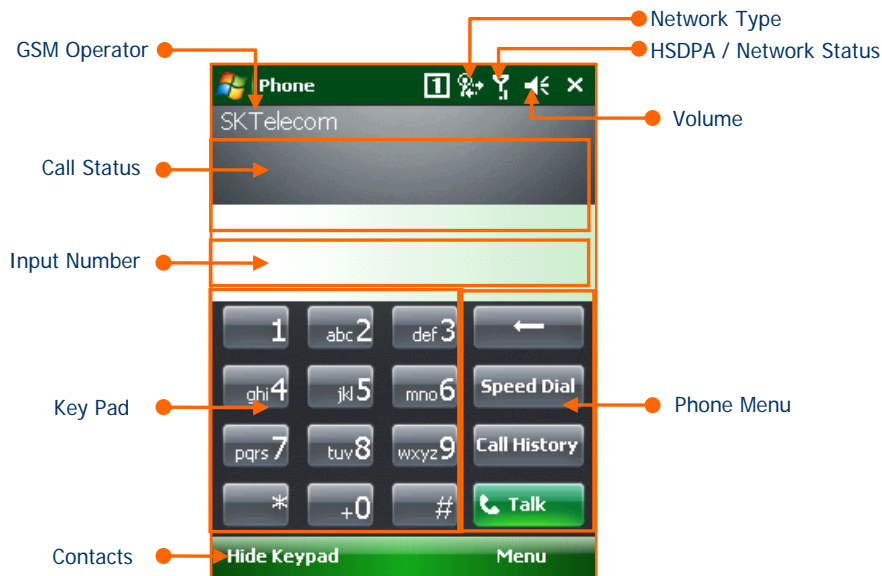


5. How to use the Phone

- Init Screen
- Phone Control
- Phone call and receive
- Phone book
- SMS send and receive
- Phone functions
- Phone setting

Init Screen

- Phone Main Screen



GSM Operator	It indicates the current Network Provider.
Call Status	It shows Call Status.
Input Number	It shows Inputted Numbers.
Key Pad	It is used to dial the number and can be used as speed-dial.
Contact	It shows Phone Book Dialog.
Network Type	It displays the availability of GPRS and EDGE / HSDPA connection.
GSM/Network Status	It indicates the signal strength.
Volume	It is Volume on/off and vibrate
Phone Menu	Talk, End, Speed Dial, Call History, etc menu...

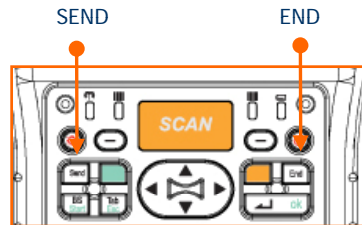
Phone Control

- Phone Program On/Off



You can turn on and off phone in Wireless Manager

- Phone Call Send/End



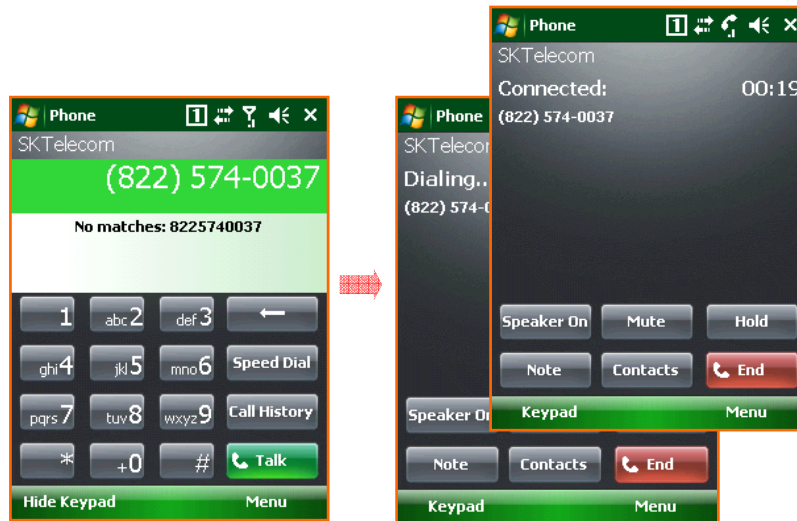
Select the SEND and END button like the picture above to start and finish the Phone program.



Tap the Phone button on the left bottom of the Today Screen and then you can process the Phone program. Also you can finish the program using the X button.

Phone Call and Receive

- Phone Call



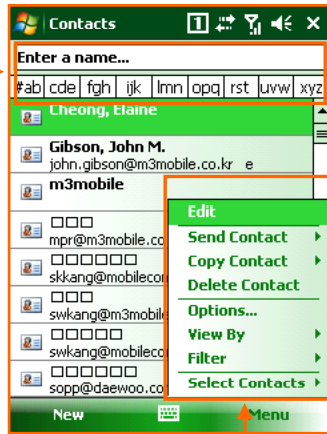
To make a call:
1. Input number via program keypad or device keypad.
2. Make a call by pressing the 'Talk' button on the program, or pressing 'SEND' button on the device.

To hang up:
Press the 'END' button on the program or on the device.

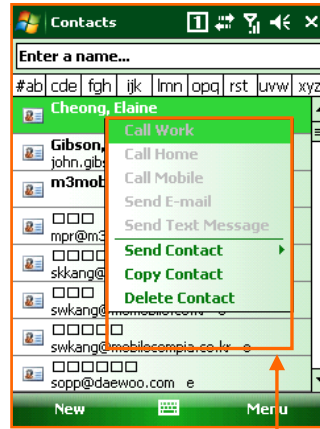
Phonebook

- To use Phonebook

Searching
A name or
Number.



Contacts Menu

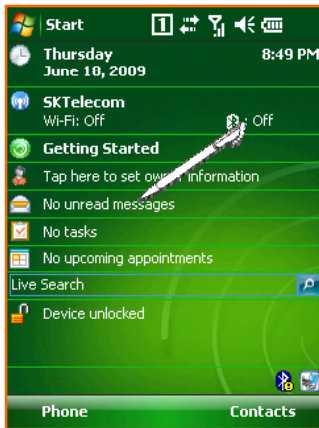


Contacts Option

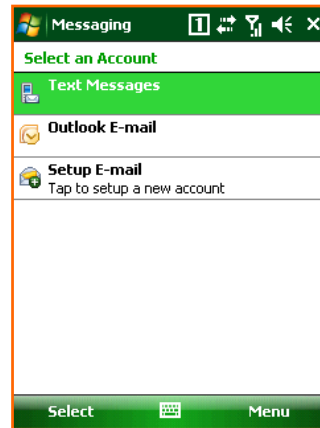
Searching Contacts		You can search the contacts by writing the name and number or tapping.
Contacts Menu	New Contact	Input the new contact
	New SIM Contact	Input the contact to the SIM Card.
	Send Contact	Transmit the information of Contact by BEAM or SMS.
	Copy/Delete	Copy or delete the Contact
	Options	Set the Options for Contact.
	View By	See the Contact by Type (Name , Company, Number ...)
Contacts Option	Filter	Filter the information you want.
	Call W/H/M	Call by the number on the Contact.
	Send E-mail	Send an E-mail by the address on the Contact.
	Send SMS	Send SMS by the number on the Contact.
	Add to Speed Dial	Add the number on the Contact to Speed Dial.
	Send Contact	Send the information of Contact by BEAM or SMS.
Copy/Delete	Copy and Delete the Contact.	

SMS send and receive

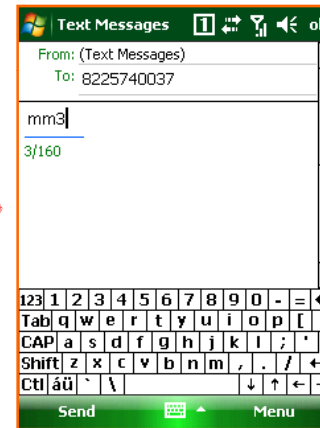
- How to send SMS



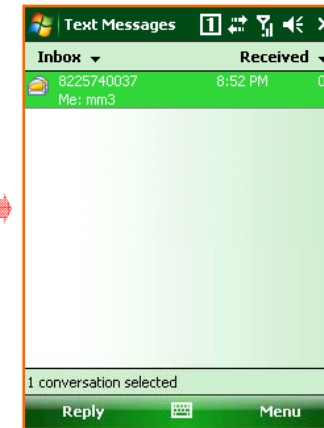
Select 'message information' menu on the main screen to send SMS. You can also send SMS by selecting 'SMS send' menu on Contacts or any other applications.



Change to the 'Text Messages' on the Message Program like the picture above and tap the 'New' on the bottom.



Input the phone number and message. Tap the send to send SMS.



You can see the pop-up screen when SMS is sent successfully.

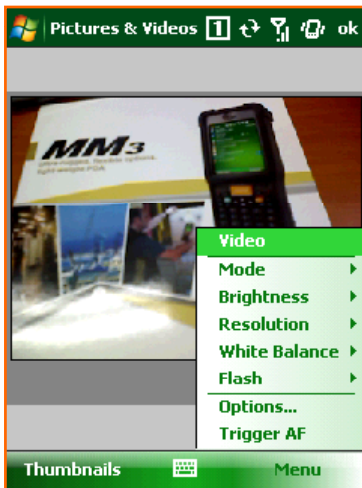


6. Usage of Device

- Camera
- Bluetooth
- GPS
- Scanner

To use the Camera (1)

- Notice before taking pictures
 - The camera equipped with the MM3 is supported 2 mega pixels.



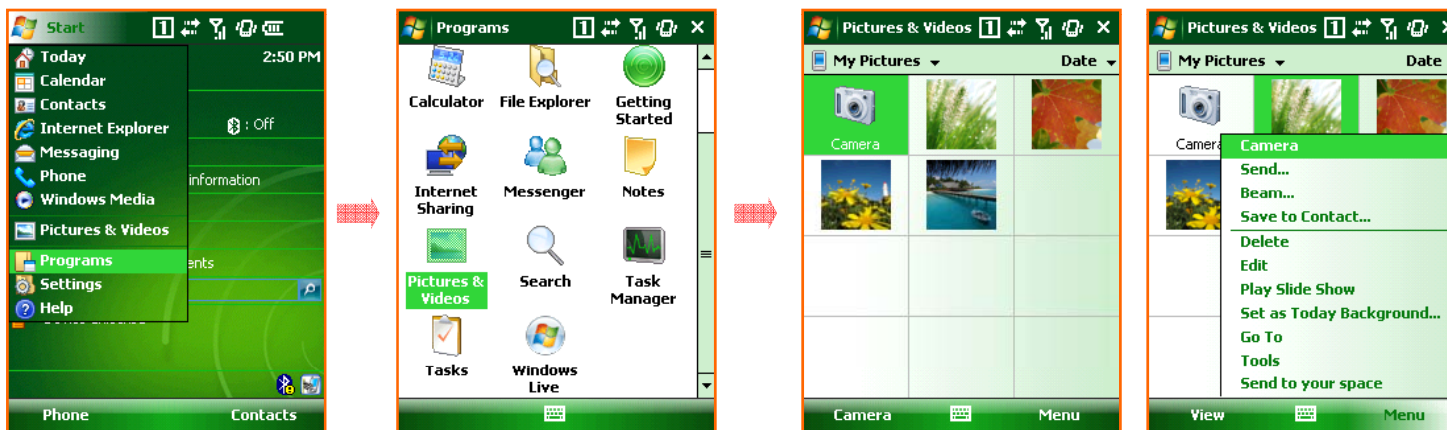
Camera Program Processing Screen

Function	Still	Video	Comment
Mode	Normal, Burst, Timer	N/A	Setting for taking photo
Brightness	-3, -2, -1, 0, +1, +2, +3		Setting for Brightness
Resolution	QCIF, QVGA, CIF, VGA, SVGA, SXGA, UXGA	QCIF, QVGA	Setting for size
White Balance	Automatic, Sunny, Cloudy, Fluorescent, Incandescent		Setting for White balance
Flash	Flash ON, Flash OFF		Setting for Flash ON/OFF
AF	Trig AF		Setting for Auto Focus

- ⚠ Camera is optional. On the device with no built-in camera, Camera function can not be used.
- ⚠ QCIF(176x144), QVGA(320x240), CIF(352x288), VGA(640x480), SVGA(800x600), SXGA(1280x960), UXGA(1600x1200)

To use the camera (2)

- To process the camera program
 - You can process the camera program when you tap the camera button or tap the camera icon on the 'picture or video'.



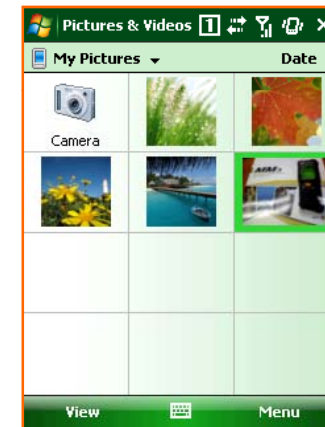
Select the 'Start > Programs > Pictures & Video'.

You can process the camera program when you select the camera icon on the Picture & Video or select the camera icon in the menu.

⚠ Tap the 'Menu > Options ... > Camera Tab' and then you can set the route of the storage memory , name and quality. You can set the Video on the Video Tab.

To use the camera (3)

- Taking a Still photo



Execute the camera program first. Move around to focus the desired item.

Finally press the camera button to take a picture.

After executing the camera program, Preview mode will be changed to standby mode after certain amount of time.

In order to start Preview Mode again, just tap the screen or press the camera button.

After taking a picture, the captured image will be displayed on the screen.

If you want to execute the camera program, tap the camera button at the bottom or click the camera icon on the left of window.

You can see the list of pictures taken previously by tapping 'Thumbnails' in the Camera shooting mode.

To use the camera (4)

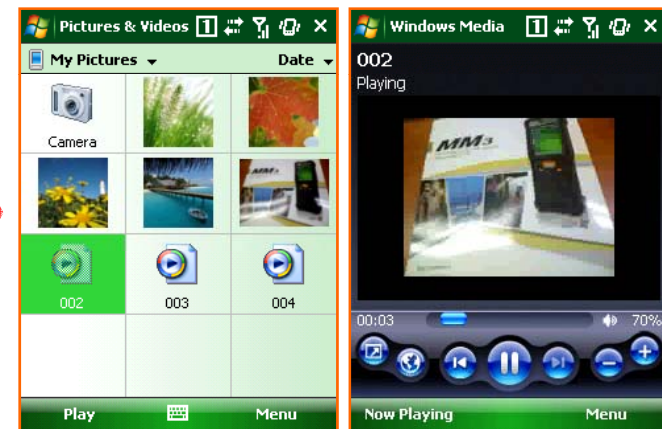
- Taking videos



If you want to take a video, select 'Menu > Videos' after executing the camera program.



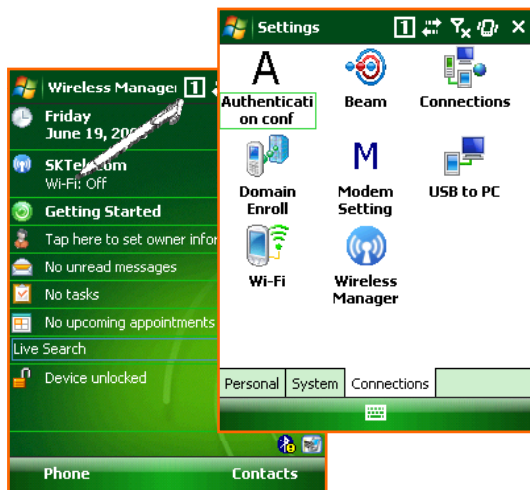
While taking a video, you can either stop (by tapping stop button) or pause. (by tapping pause button)



If you want to watch the video taken, Select the 'Thumbnails' first to see the list of video files available. When you select the video you want, you can play the video recorded.

Bluetooth Communication (1)

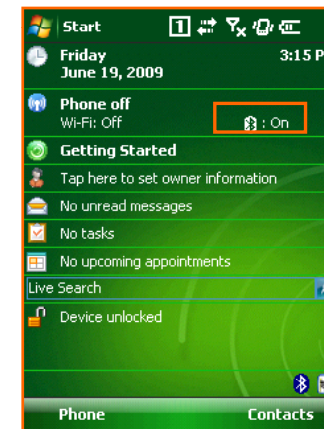
- Bluetooth On / Off



On the 'Today Main Screen', select the Wireless State bar or Tap 'Start > Settings > Connections and select 'Wireless Manager'.



To turn on/off Bluetooth, tap the Bluetooth on the Wireless Manager

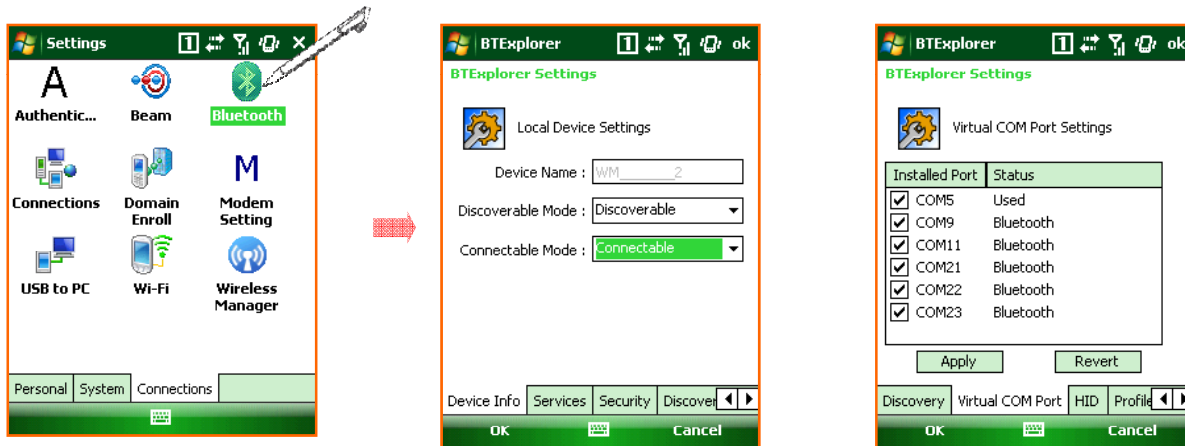


The status of Bluetooth can be seen on the wireless status bar on the main screen.

- ⚠ Bluetooth is optional. Device without built-in Bluetooth can not use Bluetooth service.
- ⚠ Bluetooth support the transmission and reception of files between the serial connecting service and Windows Mobile device.

Bluetooth Communication (2)

- Setting the Bluetooth
 - On the Bluetooth setting screen, you can set the Mode, connecting to BT device and COM settings



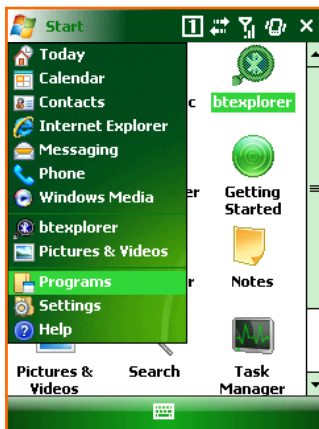
You can set the Bluetooth mode and establish connection when you tap the 'Bluetooth' icon on the Start > Settings > Connections.

In the device tab, you can search and connect to other Bluetooth devices.

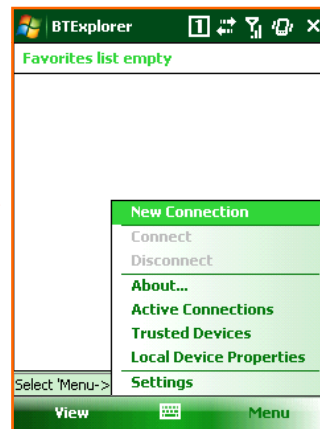
In the COM Ports tab, you can set incoming Port and outgoing Port.

Bluetooth Communication (3)

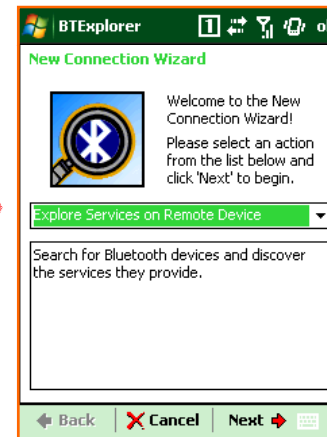
- To connect the Bluetooth
 - you can establish the connection by searching, matching pin code and selecting the service.



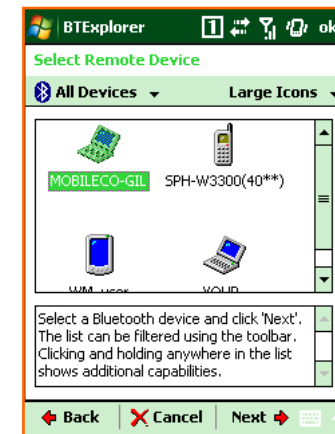
You can search the Bluetooth device available when you select the 'Add new device...' on the Device Tab. Select a device to connect with and tap 'Next'. Also you can select the 'Refresh' button if there is no device available.



Enter a Passcode to establish a secure connection. The passcode can be fixed one or the one which is negotiated between two parties in before hand.



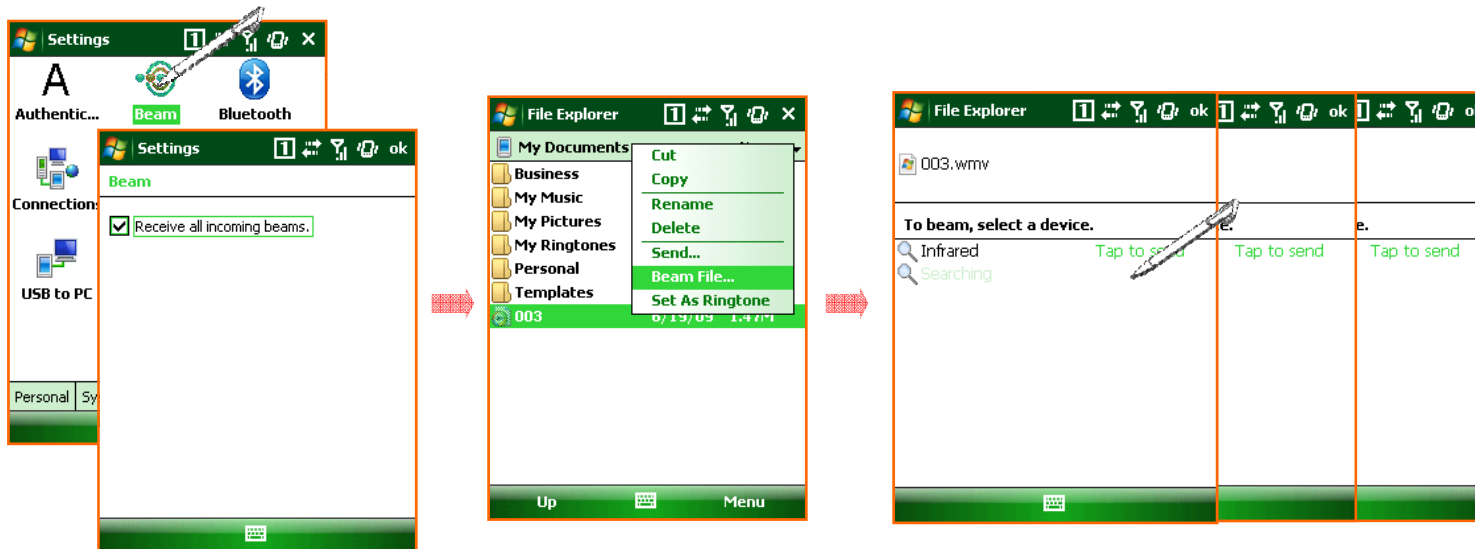
It shows the service available on the Bluetooth device.



It shows the registered devices. To add more device, please tab 'Add new device'.

Bluetooth Communication (4)

- Transferring files via Bluetooth connection.
 - It is possible to transfer files between Windows Mobile devices via Bluetooth.



In order to transfer files via Bluetooth connection, please go to 'Start > Settings > Connections > Beam' and then check the 'Receive all incoming Beams'.

Select the file you want to transfer in the File Explorer. Press the file name long and tab 'Beam File'.

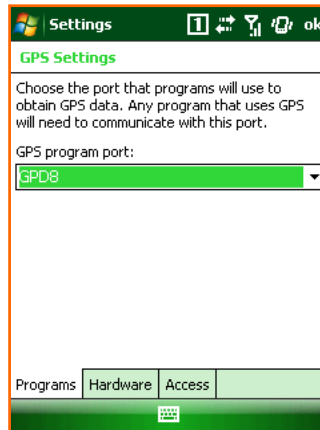
By tapping 'Beam File', the list of available Bluetooth devices shown. Please choose the device to transfer the file to.

To use the GPS

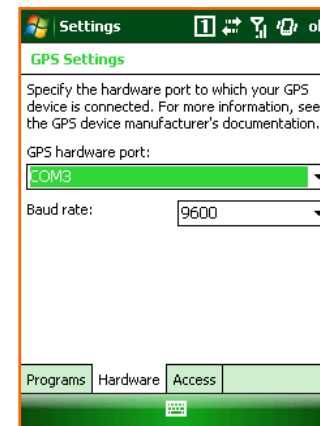
- To set the GPS
 - Tap the 'Start > Settings > System Tab > GPS' and then you can set the information related to the GPS.
 - You don't have to set additional information when there is a single program which uses GPS data. When there are more than one program which use GPS data, you need to set the program port and hardware port required for each program.



Select the GPS on the System Tab.



Set the GPS Program Port which is not yet used.



Set the Hardware port of the device.
GPS hardware port for MM3 is
COM2 and with baud rate of 9600.

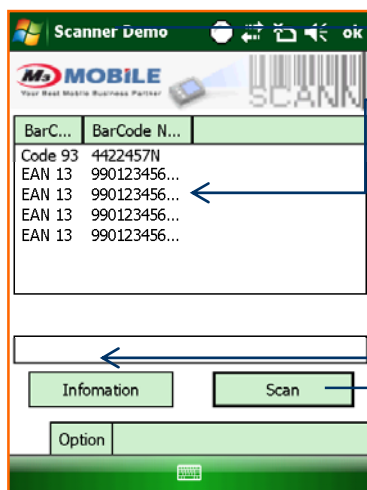
 GPS is optional. GPS feature is not available on the unit with no GPS module integrated.

To use the Scanner (1)

- To scan the barcode, there are two scanner programs installed on the device
 1. **M3 ScanTest**
 - It is a sample test program. It is only for testing the scanning feature of the device.
It can not be used for business application.
 2. **ScanEmul**
 - It is a program which can be used to output the scanned data on the application.
(like MS Word-Pad, Internet Explorer or Business Application)
 - The ScanEmul program must be running if you want to scan barcodes.

To use the Scanner (2)

- This program is located under Flash Disk -> Scanner folder



You need to select this tab to configure Settings

The Scanned Data will be displayed here

You can get the information like Firmware version, DLL version and Decoder version.

It is to trigger the scan beam.
You can also Use 'S' button on the right side of Device to trigger it.

To use the Scanner (3) Scan Test

- How to use scanner
 - Usage of 1D Scanner (MC-7100S, MC-7500S)



Correct way

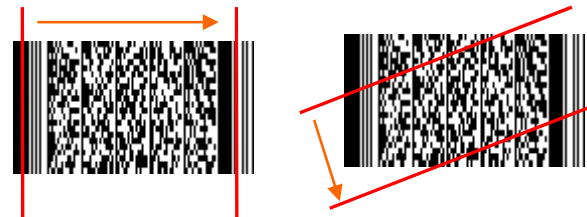


Incorrect way

- Usage of 2D Scanner (MC-7700S)



Correct way



Incorrect way

- ⚠ Scanner is optional. You can not use scan feature with no scanner enabled device.
- ⚠ 2D Barcode Scanner is optional. Only with 2D Barcode scanner enabled device, you can do 2D barcode scan. (MC-7700S)



M3 in the World



www.m3mobile.co.kr

copyright @M3 Mobile Corporation 2008 All Rights Reserved

FCC Warning

This device complies with Part 15 of the FCC Rules. Operation is subject to the following two conditions:

- (1) This device may not cause harmful interference.
- (2) This device must accept any interference received, including interference that may cause undesired operation.

15.105 Federal Communications Commission (FCC) Requirements, Part 15

This equipment has been tested and found to comply with the limits for a class B digital device, pursuant to part 15 of the FCC Rules. These limits are designed to provide reasonable protection against harmful interference in a residential installation.

This equipment generates, uses and can radiate radio frequency energy and, if not installed and used in accordance with the instructions, may cause harmful interference to radio communications. However, there is no guarantee that interference will not occur in a particular installation. If this equipment does cause harmful interference to radio or television reception, which can be determined by turning the equipment off and on, the user is encouraged to try to correct the interference by one or more of the following measures:

- Reorient or relocate the receiving antenna.**
- Increase the separation between the equipment and receiver.**
- Connect the equipment into an outlet on a circuit different from that to which the receiver is connected.**
- Consult the dealer or an experienced radio/TV technician for help.**

FCC Warning

Any changes or modifications (including the antennas) made to this device that are not expressly approved by the manufacturer may void the user's authority to operate the equipment.

FCC RF Radiation Exposure Statement: This equipment complies with FCC RF radiation exposure limits set forth for an uncontrolled environment. This device and its antenna must not be co-located or operating in conjunction with any other antenna or transmitter.

" For body worn operation, this phone has been tested and meets FCC RF exposure guidelines when used with an accessory that contains no metal and that positions that handset a minimum of 1.5 cm from the body. Use of other accessories may not ensure compliance with FCC RF exposure guidelines."