

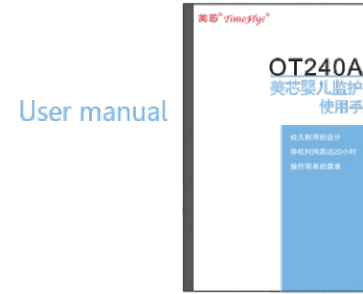
OT240M

Baby Monitor User Manual

Remote controlled pan and scan
MP3 playing music and story telling
User friendly Manu
Remote baby room temperature
Two way talk to your baby



One parent unit



User manual



NiHM rechargeable battery (1800mA)



One baby unit

1 power adaptor
1 USB connector adaptor



Components

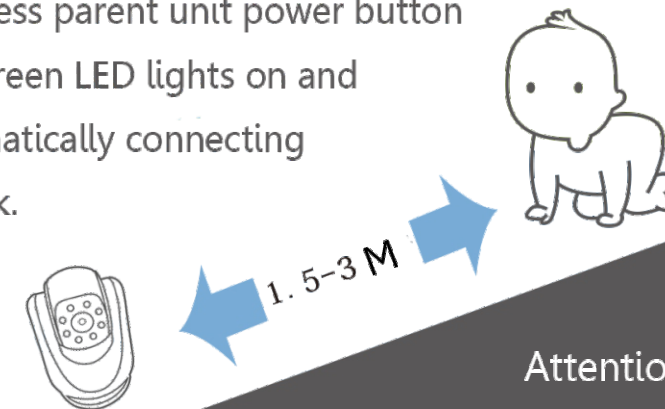
The 1st step

Connect power with baby unit and put rechargeable battery into parent unit.



The 2nd step

To turn baby unit power switch on (7) and press parent unit power button (11), Green LED lights on and automatically connecting to work.

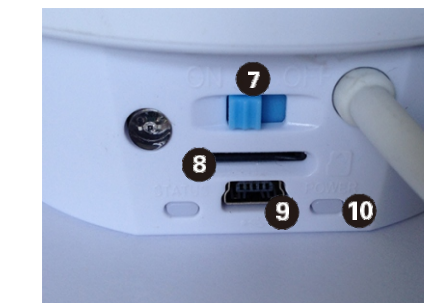


Attention

please roll up extra power wire to prevent baby

To Set Up

Buttons on Baby unit



1 backward for music
2 pause/play
3 forward
4 night light
5 volume up

6 volume down
7 power switch
8 MP3 TF slot
9 USB power connector
10 power indication

Tricks to use

- Press button 13 on parent unit to turn on and off LCD screen to save power and make a friendly night sleeping
- Hold button 14 on parent unit to talk to your baby

Buttons on Parent unit

To Use Manu

	6	Voice volume		MP3		Temperature		Power		Signal
		Screen always on or power saving								
	6	Brightness								
	X2	ZOOM								
		MP3								



11 Power/Manu short press to open Manu, long press to open power
12 Arrow buttons to remote control pan and tilt or when open Manu to select functi functions
13 Turn on/off LCD screen
14 Press long button 14 to talk to your baby



Attention:
short press power button
11 to go into Manu status.