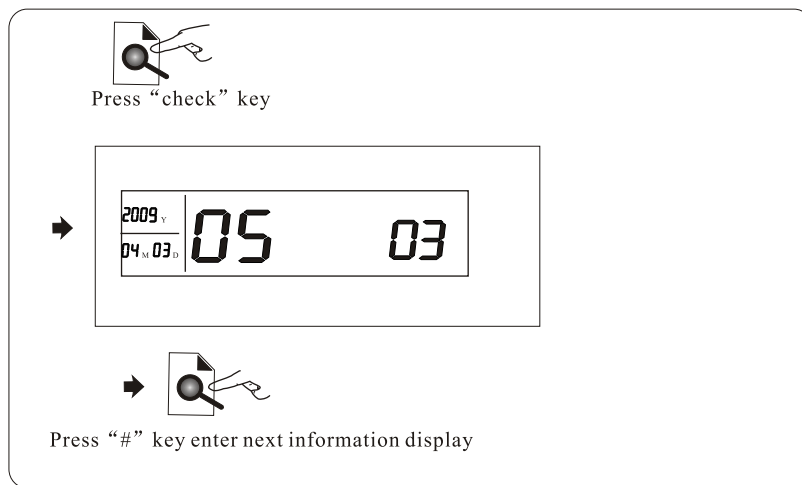


3.9.2 Event Check

Press the [inquiry] key less than 3sec to inquiry the event recorded. Press the inquiry key continuously you can get the record one by one chronologically. Press any key to exit.

For example: Burglar alarm at the fifth wired zone at 8:30 am 3rd April, 2009




★alarm status code

01	Delay	06	gas leak
02	perimeter	07	tamper
03	burglar	08	disarm
04	emergency	09	away-arm
05	fire alarm	10	home-arm

3.9.3 AC power off and restoration testing function: when the AC off, the power LED will be off on the panel will report AC loss to the CMS and dial preset alarm receiving phone (follow me#) if AC power does not restore in 30 min. when the AC is restored the panel will send restoration message to CMS after 3 min.

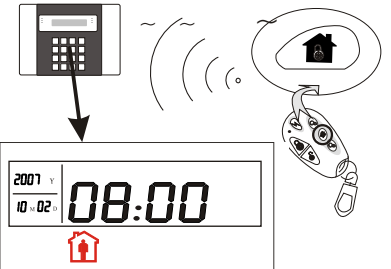
3.10 Easy operation

☆Away Arm



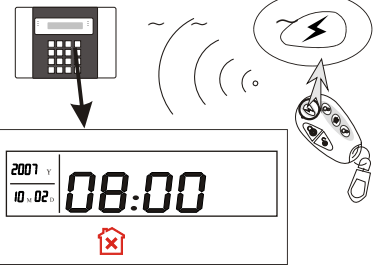
Press the key for arm away on remote or the keypad, then you hear "the system is arming" there will be 10 sounds "Dee" to tell you arm the system successfully

☆Home Arm




Press the key for home arm on the remote or "HOME" key on the keypad, the panel will give voice to tell system is enter home arming. And it display home arm icon on the LCD screen.

☆Panic



Press the panic button on remoter, or press "confirm/panic" key on panel for 3 seconds, and 10seconds later the panel will dial the preset phone number. And you can disarm to cancel alarm.

☆Disarm

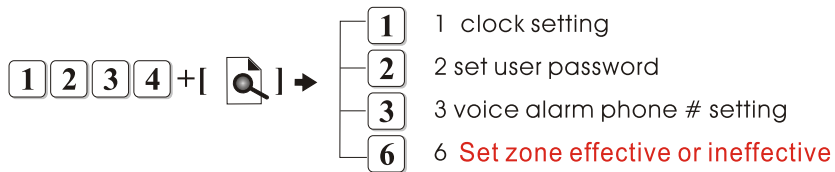


press the disarm key on the remote or enter your user password on the keypad, then you will hear "dee" and voice "system disarmed", then you have disarm successfully.

After above-mentioned operation, press "up/inquiry" button for 3 seconds, and you can inquiry record event like emergency alarm, home arm and so on. Press [up] key to previous option, Press [down] key to inquiry next event. Press [*] key to exit inquiry.

Chapter IV User setting

user menu



press back key to exist setting.

4.1 Clock setting

Enter [1234] + [] + [1] + [#] enter clock setting, details please read P24, chapter 5.61

Press[*]3s

According to flash of Y.M.D.H.Min on screen, enter 09、06、01、20、09 by turn

4.2 User password setting

[user code] + [] + [2] + [#] + [xxxx] + [#]

enter 4-digit user password, press back key to exist press confirm key to confirm. enter 4 digit new password

4.3 Voice alarm phone # setting

[user code] + [] + [3] + [#] enter voice alarm phone # setting . for details please read P 23, chapter 5.5

4.4 Zone setting (effective or ineffective)

[user code] + [] + [6] + [#] + [xx] + [#]

enter the zone # from 1-40 to modify , press back key to exist press confirm key to confirm..

Please choose, press 1 to set on, press 0 to set off. + [1] + [#]

Chapter V System Setting

We will introduce the function setting of ST-IV series.



We are not responsible to any problem which caused by user wrong operation!

5.1 Setting

- ★ When set system on the keypad, [*] key with both **delete function[#]** with confirm function. **[Arm] key with “back, exist” function.**
- ★ Every time press a key the panel will sound effective indication speech. Every time finish one operation the panel will sound corresponding speech indication anyway it is wrong or right operation. If setting under advanced menu, after finish setting please press [*] key to back to previous menu to continue other setting.
- ★ **Under disarm status** Press [*] key and hold on for 3 seconds to enter setting status. Enter administrator password, then press the corresponding key to enter option setting. Everytime enter correct command please press [#] to enter the advanced menu. After you enter the advanced menu, for user convenience the screen will display the default or the setting user programmed before. Then the user can enter the setting he want to modify and press [#] key to confirm. If the user do not want to modify, he can press [#] to keep the former setting. After this operation, the LCD display will back to the status of enter command so that the user can enter next option setting. After you finish all settings, press back key to exist. If after 5 minutes no any operation the panel will back to previous menu automatically.



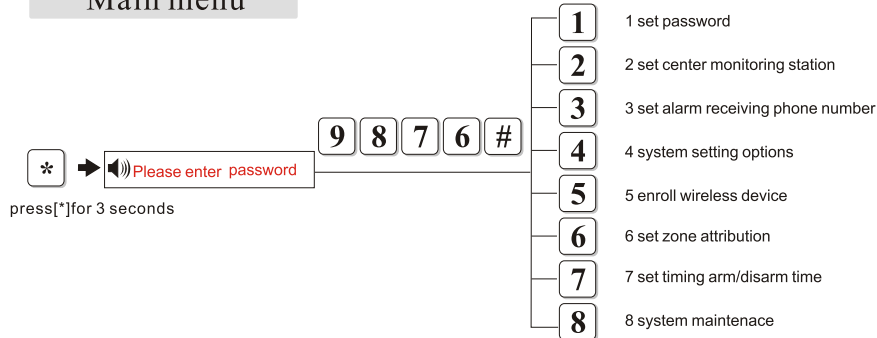
Only under disarm status, can enter system setting by pressing [*] for 3 seconds.

- ★ If incorrect operation during setting you can press [*] and hold on for 3 seconds to back to previous menu.

5.2 Setting on main menu

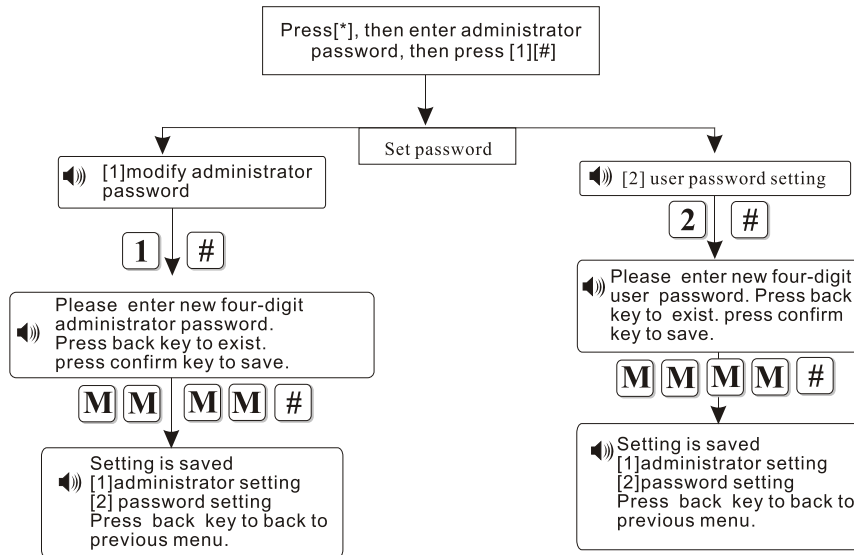
Let's learn about how to enter the system and functions. Please set the panel according to following method, and the panel will keep the memory of your setting until you modify it again.

Main menu



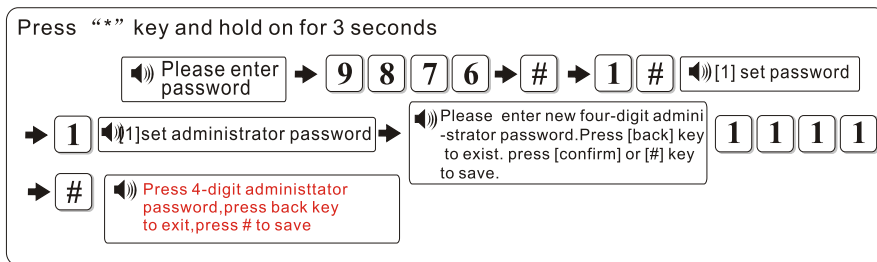
5.3 Set password

★ Set password: Password include “user pasword” and “administrator password” “user password” with function to disarm system. It is a private key on remote control. “Adminstrator password” is the only password to set the system. Please do not forget the administrator password otherwise you can not operate the system. Press “*” (hold * for more than 3 seconds) "9876#" "1#", then operate according to the speech indication.



Note: Here [M] stands for entering new password

Example 1: Modify the administrator password to “1111”

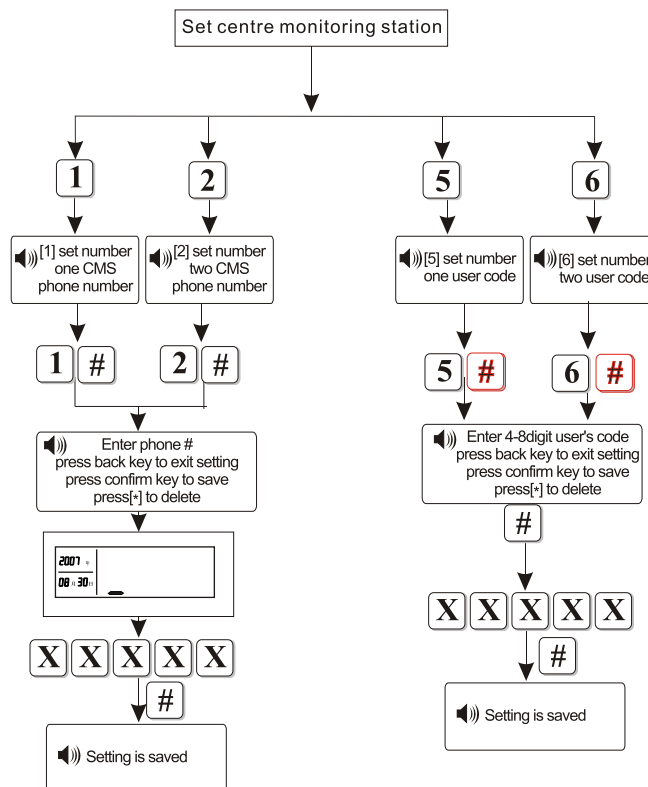


Note:

1. Above are based on correct operation for each step. If incorrect operation occurs, please press [back] key to back to previous menu to reset.
2. The factory default of administrator password is [9876]. If you have modified the password, please enter the new password.

5.4 Set centre monitoring station

Press [*]3 seconds+[9876#]+[2#],then operate as following.



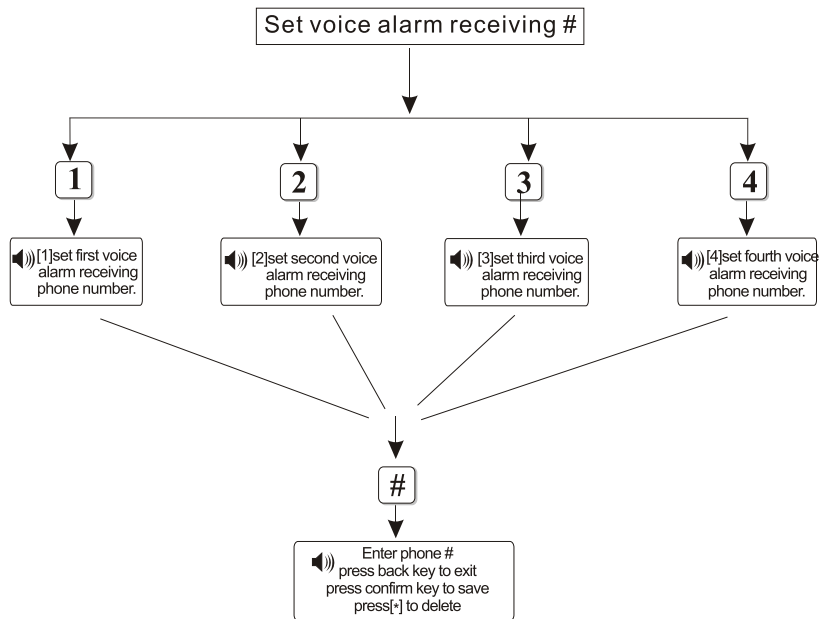
☞ The user code in the CMS setting which is identification code in the CMS. And the user code in transfer alarm setting is user, identification code between same model panel
Please set user code of the panel in CMS after set the CMS # . The user code should be 4,6 or 8 digit.

When set CMS phone #, please press *, then enter the phone #.
When only delete phone #, press *, then press #.

If set two CMS phone #, please set two user #.

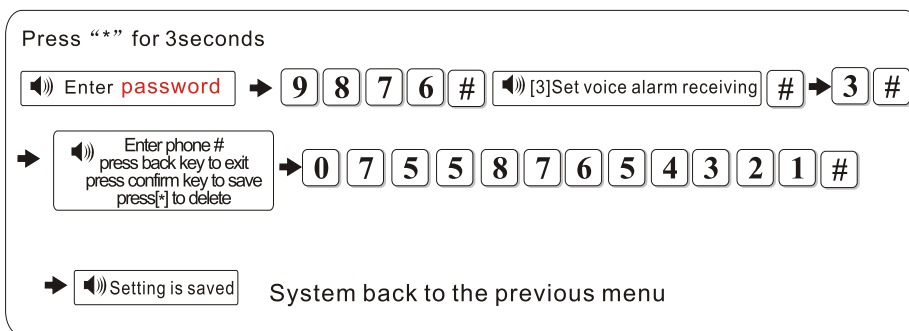
5.5 Set voice alarm receiving phone number

After press[*]3 seconds+[9876#]+[3#], operator follow the voice indication :



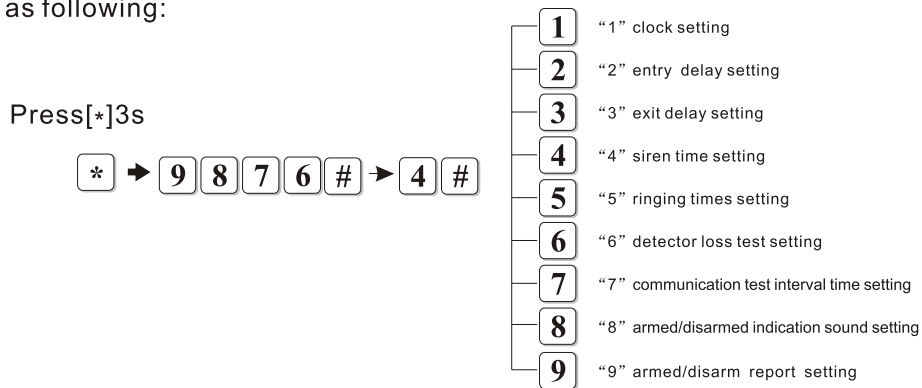
Example 2: panel connect with one telephone .

And set the local phone # “87654321” as first voice alarm receiving # :



5.6 System setting options

Press[*]3seconds+[9876#]+[4#], operator according voice indication as following:



5.61 clock setting: Set system time administrator june 1st, 2009 20:09.

Operate as : [*]3s→[administrator password]→[#]→[4][#]→[1][#]→[year]→[month]→[day]→[hour]→[minute]→[#]

Example:set the time to :20:09 1st,Jun,2009

Press[*]3s

* → 9 8 7 6 # → 4 # → 1 #

Enter Y.M.D.H.M.
press back key to exit
press confirm key to save

2009.06.01 20:09 → 0 9 → 0 6 → 0 1 → 2 0 → 0 9

According to flash of Y.M.D.H.Min on screen,enter 09、06、01、20、09 by turn

→ # → Setting is saved

Save setting

Indication: Considering the convenience for user to know the alarming time, please set the time same as location time,

5.62 Entry delay setting: the period from system is triggered to panel start alarming(default Value is 10s)

E.g: Set the delay time as 9s

Press [*]and hold on for three seconds

* → 9 8 7 6 # → 4 # → 2 #  Enter the delay time.
Press back key to exit
press confirm key to save

Administrator password


→ 0 0 9 → #  Setting is saved

Enter 2 digit number from 001-255 , add 0 if lower than 10. Like, 9 enter as 09.

5.63 Exit delay setting: the period from user arm to the system armed successfully. This is for user's convenience to exit after arm operation.(default value is 10s)

Example: Set delay time as 89s

Press[*]and hold on for 3s

* → 9 8 7 6 # → 4 # → 3 #  Enter the exit delay time.
Press back key to exit
press confirm key to save

→ 0 8 9 → #  Setting is saved

Enter 2 digit number from 001-255 , add 0 if lower than 10. Like,
9 enter as 09.

Note:Entry delay is effective just for entry/exit zone.

Exit delay is effective just for perimeter,burglar,delay zone.

5.64 Siren time setting: the siren time after panel start alarming(default value is 5 minutes).

Example: Set the siren time as 15 minutes(It's suggested not to set the siren time more than 15 minutes)

Press [*] and hold on for 3 seconds

* → 9 8 7 6 # → 4 # → 4 #

Enter 0 to 30 minutes siren time
press back to exist.
Press confirm
to save

→ 1 5 → #

Setting is saved

Enter 2digit number from 0-30, add 0 if lower than 10. Like, 9 enter as 09.

5.65 Set the ringing time: user dial the phone which connect to the panel to achieve control the panel remotely(Default value is 7 times).

Example: Set ringing time as 8

Press [*] and hold on for 3 seconds

* → 9 8 7 6 # → 4 # → 5 #

Enter ringing time. If set as 0, system wont take the phone. Press [back] to exit. press [confirm] or [#] to save the setting

→ 0 8 → #

Setting is saved

Enter 2 digit number from 0 to 99,add 0 if lower than 10. Like, 9 enter as 09.

Note: Here user can set ring times from 0-99.When set as 00,the remote control function will be disable.

5.66 Detector loss test setting: The time interval of detector lose or detector power-off Inspection(Default value is 00) .

Example: Set inspection of detector loss or power status every 18hours

Press [*] and hold on for 3 seconds

* → 9 8 7 6 # → 4 # → 6 #

Enter 0-24hours interval on detector loss inspection, 0 for not inspect. Press back key to exit . Press confirm key to save.

→ 1 8 → # Setting is saved

Enter 2 digit number from 0 to 24 h, add 0 if lower than 10. Like, 9 enter as 09

5.67 Setcommunication inspection interval time : Time interval for panel communicate with CMS(Default value is 00)

E.g: set panel communicate with CMS every 4 hours.

Press[*] and hold on for three seconds

* → 9 8 7 6 # → 4 # → 7 #

Enter 0 to 24 hours interval on communication inspection, 0 for not inspect. Press back key to exit . Press confirm key to save.

→ 0 4 → # Setting is saved

Enter 2 digit number from 0-24hours,add 0 if lower than 10. Like, 9 enter as 09

5.68 Set arming/disarming tone: Set the tone type of arming/disarming (default value is no indication)

Example: set armed/idsarmed with short sound tone indication

press[*] for 3s

* → 9 8 7 6 # → 4 # → 8 #

▶ 2 → # ▶ Setting is saved

1.no indication 2.short sound

▶ Choose arm/disarm indication voice. One no voice, two short sound. Press back key to exit. Press confirm key to save.

5.69 Set arming/disarming report : Set if report arm/disarm to CMS or not.

Example: Set arm/disarm report to CMS

Press[*] and hold on for 3s

* → 9 8 7 6 # → 4 # → 9 #

▶ 2 → # ▶ Setting is saved → # ▶ Setting is saved

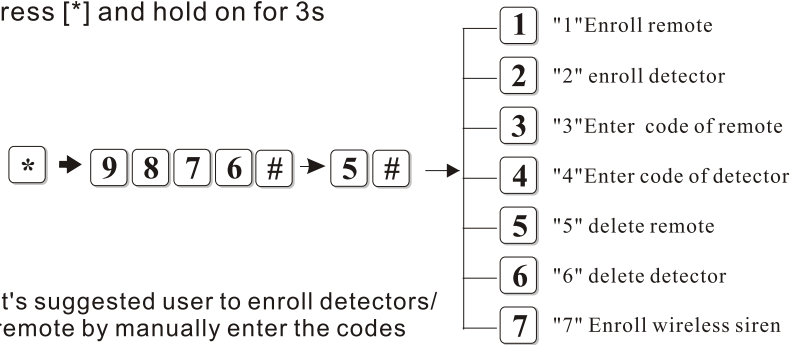
1.not report 2.report

▶ Please choose arm, disarm report one not report, two report. Press back key to exit. Press confirm key to save.

5.7 Enroll wireless device

Pressing[*] [9876#] [5][#] then operate follow the voice indication

Press [*] and hold on for 3s

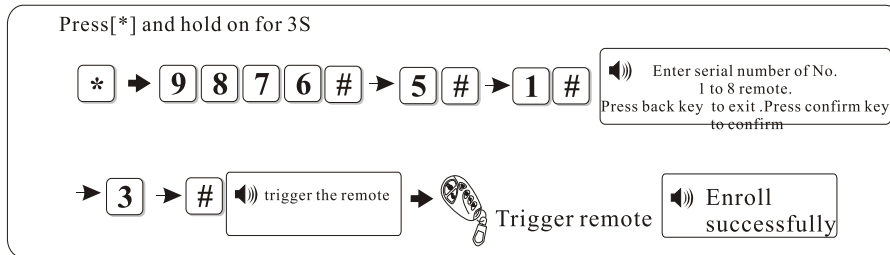


It's suggested user to enroll detectors/ remote by manually enter the codes

5.7.1 Enroll remote and delete remote

Example: enroll #3 remote

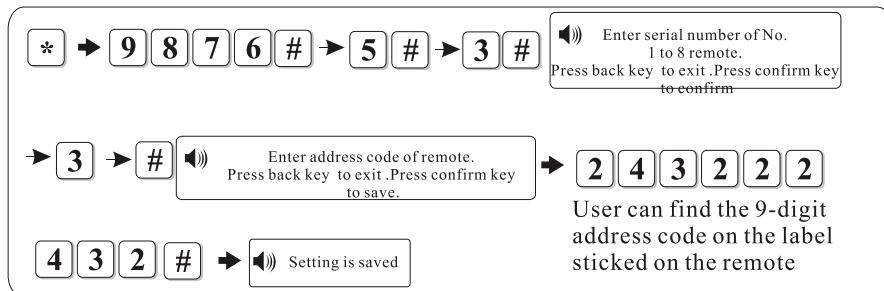
1)Auto enrolling:



2)Enroll manually

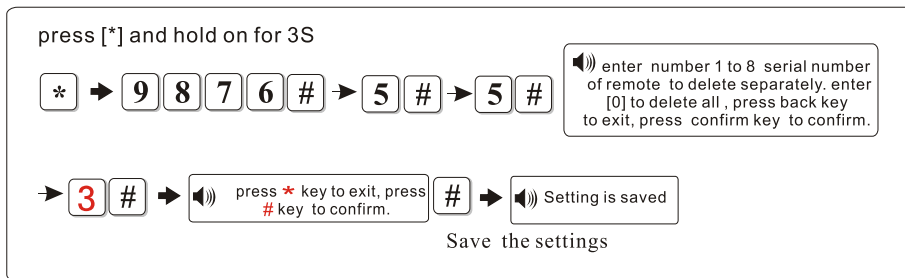
Press[*] and hold on for 3S

Example:set the remote(with code:243222432) as the third remote.



3) Delete remote

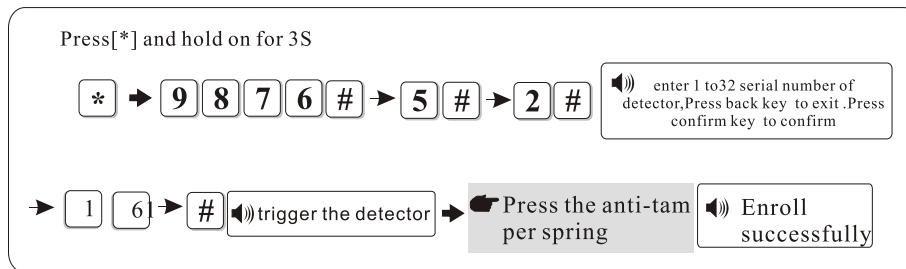
Example: delete the #3 remote



5.7.2 Enroll and delete detectors

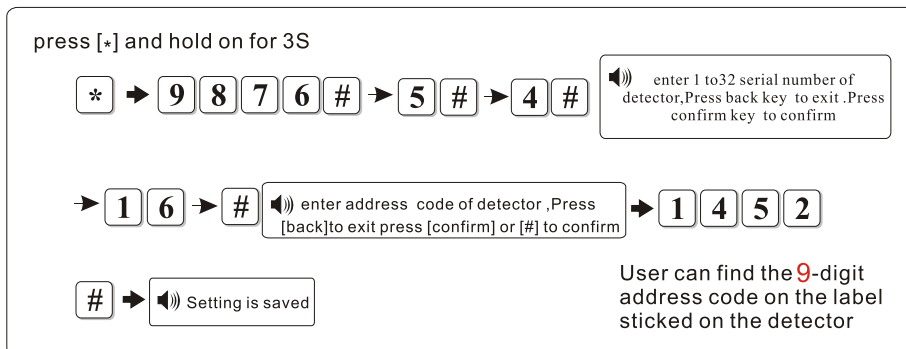
Example: enroll # 16 wireless detector

1) Auto enrolling:



2) Manual enrolling

Example: enroll the door sensor (with address: 145228522) to zone #16



3) Example: delete #16 detector

press [*] and hold on for 3S

* → 9 8 7 6 # → 5 # → 6 #

enter number 1 to 32 serial number of detector to delete separately. enter [00] to delete all. Press back key to exit Press confirm key to confirm

→ 1 6 → # # → press back key to exit, press confirm key to confirm.

Setting is saved

Save the settings

5.7.3 Enroll wireless siren code

Example: Enroll wireless siren code

press [*] and hold on for 3S

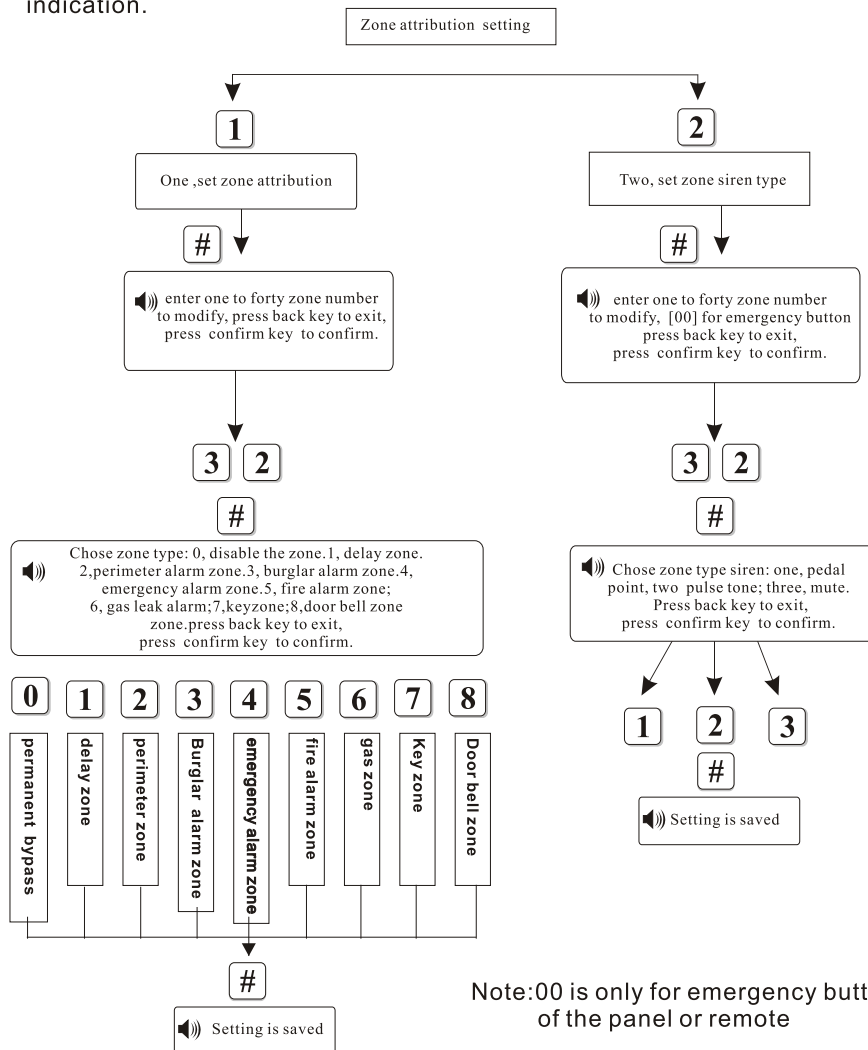
* → 9 8 7 6 # → 5 # → 7 #

Enrolling, please wait

Press the [SAVE] key of the wireless siren till the panel and siren sound at the same time, press back key to exit

5.8 Set zone attribution

Press [*]3seconds+[9][8][7][6]+[#]+[6#], then operate follow the voice indication.

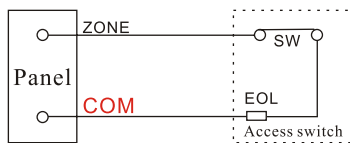


Key zones: only for wired zones(33-40), used for access control. when set as key zones, the burglar function will be disable.

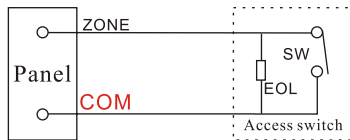
Doorbell zones: only for wireless zones(01-32). Under home arm/away ar m status, trigger the doorbell zone will report delay alarm. Under disarm status, trigger the doorbell zone will sound ringing tone. .

Wiring method of key zones

1.N.C.



2.N.O.



Key zones:

(33-40) wired zones can be programmed as key zones, Press * and hold for 3 seconds, enter administrator password [#]+[6][#]+[1][#]+ [zone number] +[#]+[7][#].

When the zone is programmed as key zone, the panel status will be same as current key zones status when power on instead of rest oring to the status before power off. If there is more than one key zones, then the panel status will be the same as the key zones with maximum number.

User can program the zone type, when the zone is triggered, the panel will report the preset zone type information of triggered zone to CMS.

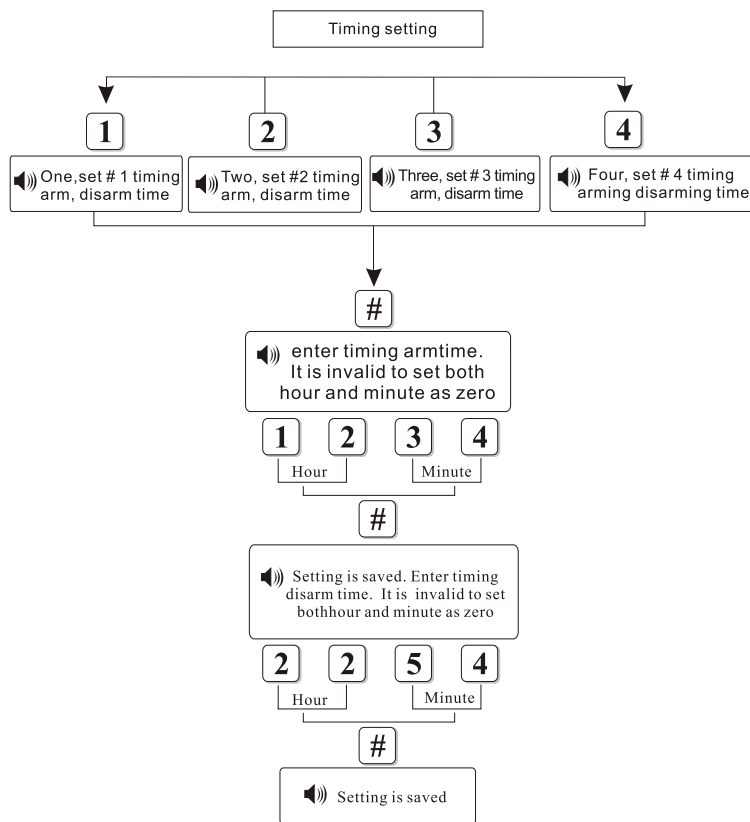
Hint: When the zone type is programmed as 0, that means the zone is disabled/bypassed.

Zone:zone wiring terminal
GND:common terminal
SW:switch
Eol:resistor

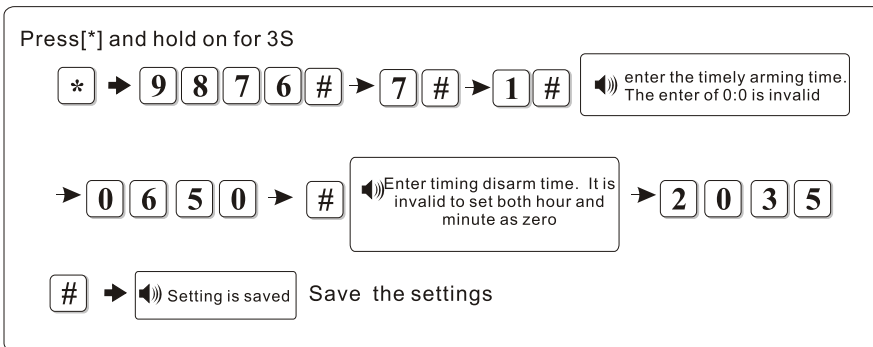
5.9 Set timing operation

Example: Set timing arm/disarm, timing arm at 12:34,
timing disarm at 22:54

Press [*] for 3 seconds+[9][8][7][6]+[#]+[7#], then operate according to the voice indication.



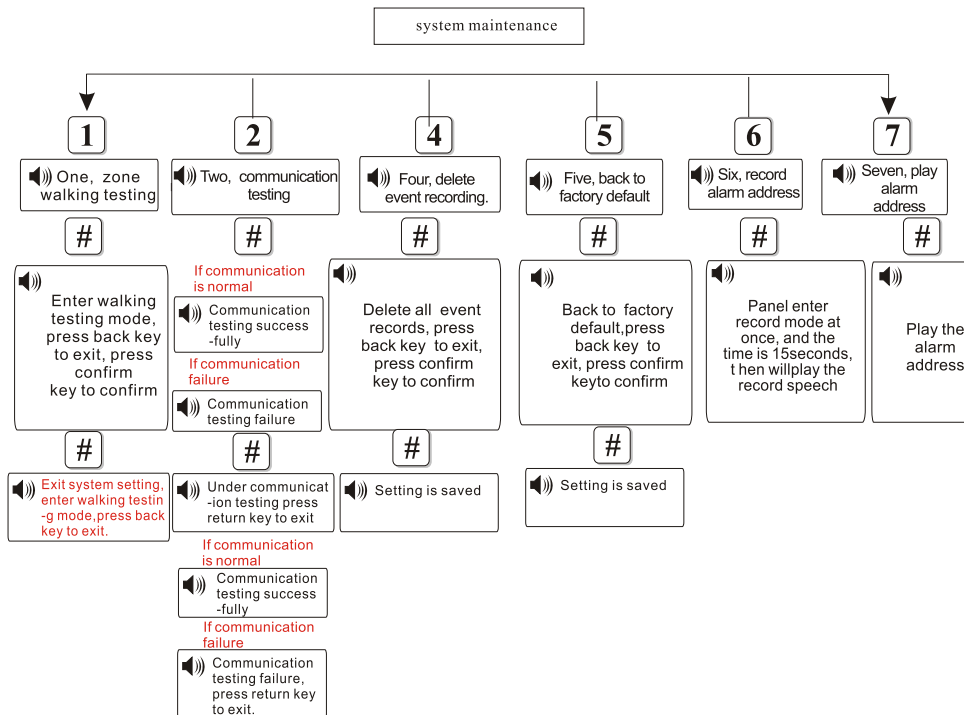
Example: Set timing arm at 6:50 AM , timing disarm at 8:35 PM.(Enable set total 4 groups of timing arm/disarm time)



Hint: 4 groups of timing arm/disarm can be set according to the schedule of user

5.10 System maintenance

Press [*] and hold for 3 seconds+[9][8][7][6]+[#]+[8#], then operate follow the the voice indication.



Walk test: Test if the panel can work with the detectors. Under walk test, trigger the detector, the siren of panel will hoot about 2s, after testing, press [arm] the panel will back to normal status.

Communication test: Test if the panel can work with CMS.

Chapter VI alarm and receive alarm

6.1 Only the zone type which is set to be burglar alarming or perimeter alarming is controlled by the operation of away-arming, home-arming/ disarming. Other zone types are on the status of the 24 hours valid. If spring alarming, the types of burglar alarm, perimeter alarming and self-defining alarming will alarm after a delay time, but the other types will immediately alarm through dial-up.

6.2 The panels adopt Contact ID for the communication protocol to send the alarming information to the center. If the panel receives the acknowledgement from center, then a successful alarm, if not, the panel will alarm repeatedly. Alarming information can be displayed and resolved by the software of center computer.

Chapter VII Technical specification

7.1 General data

- 1 area data: 8 wired areas, 32 wireless zones, 8 remote controllers
- 2 Zone type: delay, perimeter, burglar, emergency, fire, gas, key, door bell zone events
- 3 Frequency: **433.98MHz**
- 4 Signal transmit distance: 100 to 150 meters (open area)
- 5 Power supply: 15 V / 500mA
6. Built-in rechargeable battery: 12 V / 1000mA
7. Main machine static current: 50 mA / 15v (exclude wire detector current)
8. Main machine alarming current: <300 mA / 15v (exclude high siren current)
9. Main machine 12v maximum output current: ≤100mA for wired detectors
10. Recording time: 15s
11. Frequency: **433.98MHz**
12. The trigger delay of wired zones: ≥100 ms
13. The method of alarming dial: DTMF
14. DTMF dial frequency variation : < 1.5%
15. Communication Protocol with CMS: Ademco Contact ID

7.2 Physical Performance

- Operation temperature range: 32°F to 120°F (0°C to 45°C)
- Storage temperature range: -4°F to 140°F (-20°C to 60°C)
- Relative humidity: 85% at 30°C (86°F)
- Dimensions: 230*160*38mm
- Weight: 550g
- Color: white

Chapter VIII Maintenance

8.1 Regular test

Design of components of the system is to reduce maintenance cost, but still it is suggested that periodical check may be carried out.

8.2 The cleanliness of control main machine

Main control panel maybe be stained by fingers or covered by dust after using for a while. Use soft cotton cloth or sponge to clean it. Don't use any lubricant, liquor such as kerosene, acetone and strong gel which will damage appearance and the transparency of top window.

ATTENTION: Don't use any lubricant, liquor such as kerosene, acetone and strong gel which will damage appearance and the top transparency of window.

Chapter V X Limitation of the Products

Although the products is a high standard products, there is also some limitation of them such as false alarm or no alarm, the reasons may be below:

Lack of Maintenance. The system needs maintenance and test regularly test. The sensitive of the detectors may decrease and the siren may not whistle.

Lack of power supply If no power input and the back up power is not enough, the panel can not work normally.

Telephone Line False If the telephone line is cut, the panel could not send alarm signals .

Limitation of Smoke Detectors if the smoke is far from the smoke detector, the detector could not alarm.

If the intruder break in through some door or window not monitored, or some one knows hot to make the system not work.

FCC Caution: Any changes or modifications not expressly approved by the party responsible for compliance could void the user's authority to operate this equipment.

This device complies with Part 15 of the FCC Rules. Operation is subject to the following two conditions: (1) This device may not cause harmful interference, and (2) this device must accept any interference received, including interference that may cause undesired operation.

NOTE: This equipment has been tested and found to comply with the limits for a Class B digital device, pursuant to Part 15 of the FCC Rules. These limits are designed to provide reasonable protection against harmful interference in a residential installation. This equipment generates, uses and can radiate radio frequency energy and, if not installed and used in accordance with the instructions, may cause harmful interference to radio communications. However, there is no guarantee that interference will not occur in a particular installation. If this equipment does cause harmful interference to radio or television reception, which can be determined by turning the equipment off and on, the user is encouraged to try to correct the interference by one or more of the following measures:

- Reorient or relocate the receiving antenna.
- Increase the separation between the equipment and receiver.
- Connect the equipment into an outlet on a circuit different from that to which the receiver is connected.
- Consult the dealer or an experienced radio/TV technician for help.