

# ENERGY



**BTS 2.1**

OWNER'S MANUAL

↑ TRIM LINE ↑

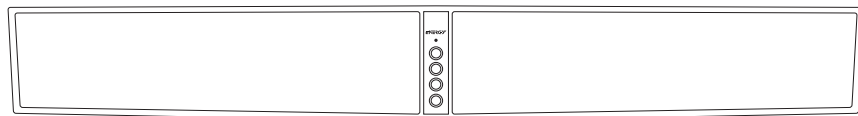
↑ TRIM LINE ↑

↓ TRIM LINE ↓

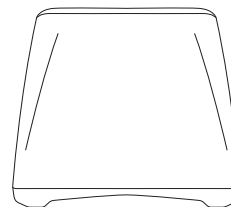
↓ TRIM LINE ↓



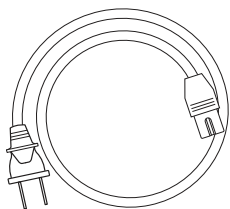
# WHAT'S INSIDE



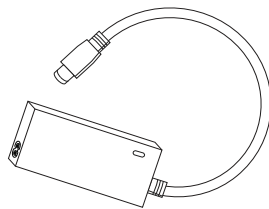
Soundbar



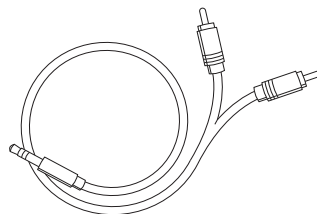
Subwoofer



AC Power Adapter



3.5mm to Dual RCA Cable



Remote



Mounting Template

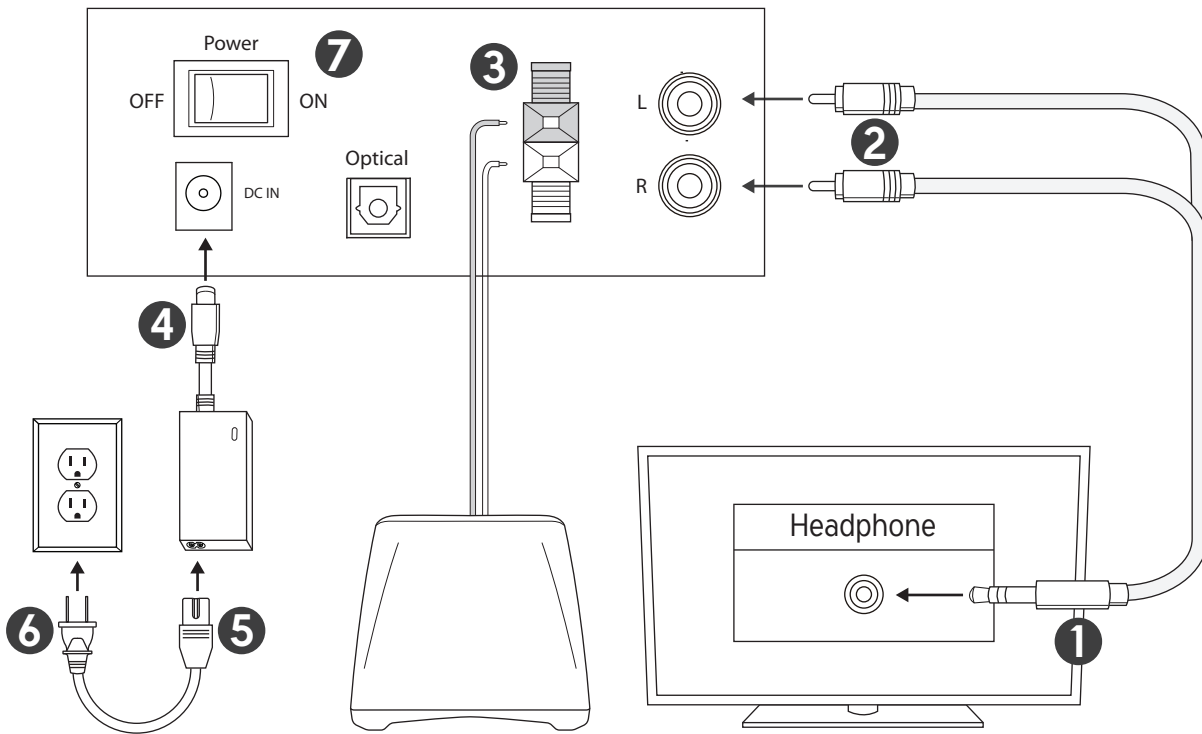
↑ TRIM LINE ↓

↑ TRIM LINE ↓

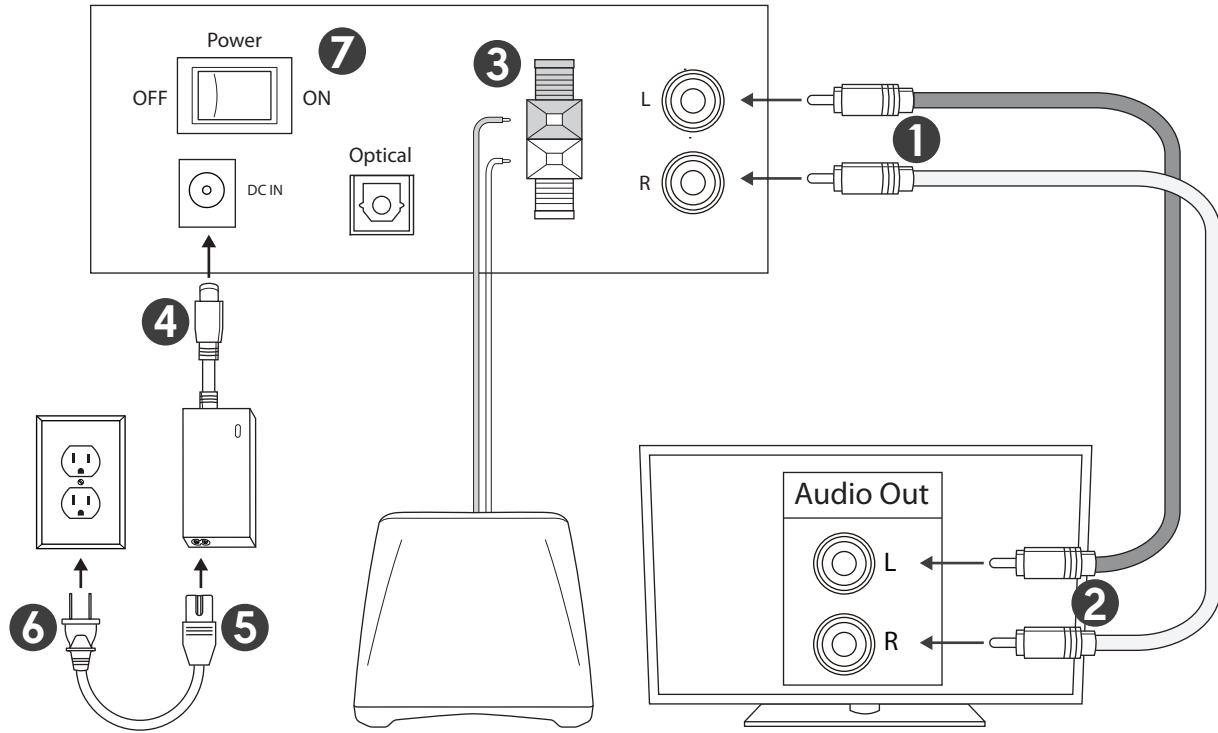
↓ TRIM LINE ↓

↓ TRIM LINE ↓

### 3.5mm TO DUAL RCA ANALOG CONNECTION (IF TV HAS NO HEADPHONE OUT SEE NEXT PAGE)

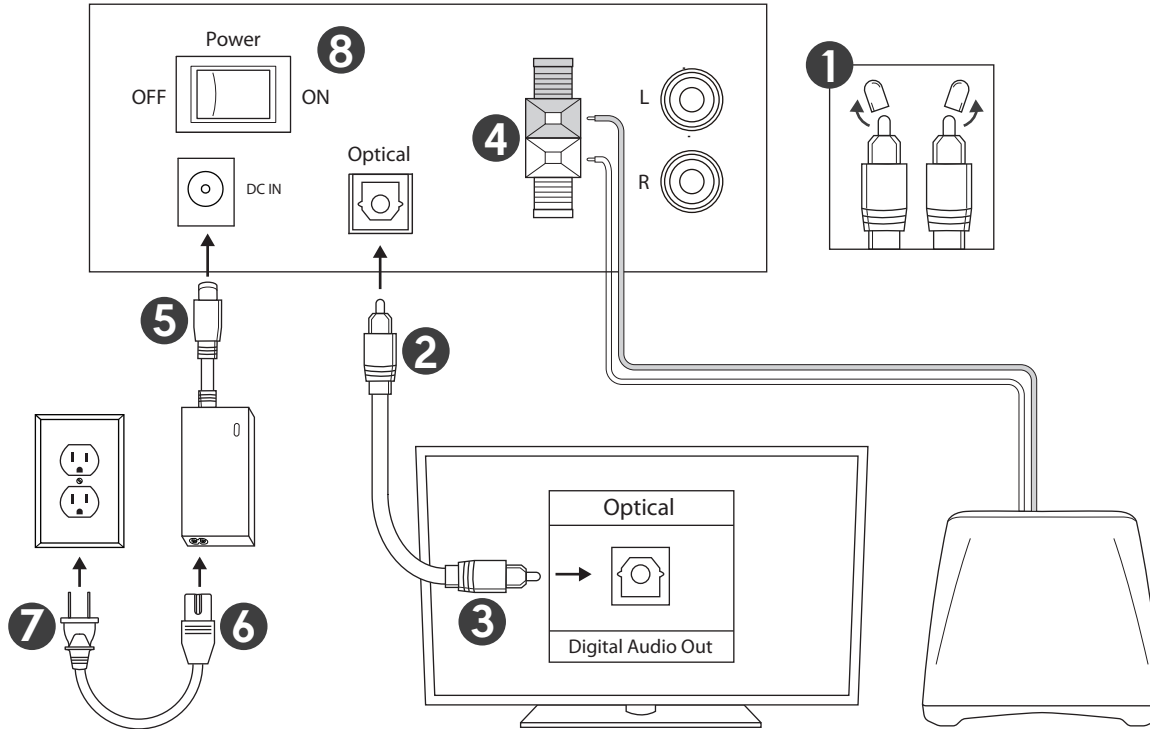


## DUAL RCA TO DUAL RCA ANALOG CONNECTION



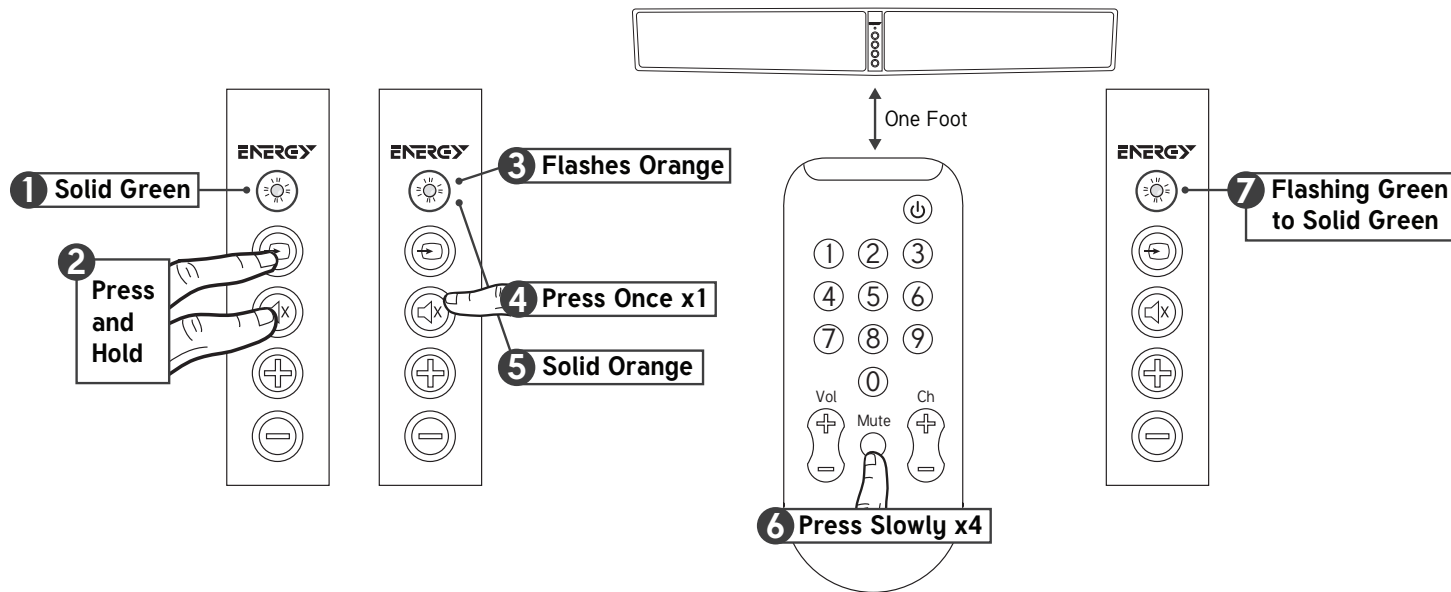
**NOTE:** RCA Cables not included.

## DIGITAL OPTICAL CONNECTION



**NOTE:** Digital Optical Cable not included. The Digital Optical Connection requires that the TV outputs “PCM” digital sound and NOT Dolby® Digital sound from its Digital Output. Refer to the TV Owner’s Manual for guidance.

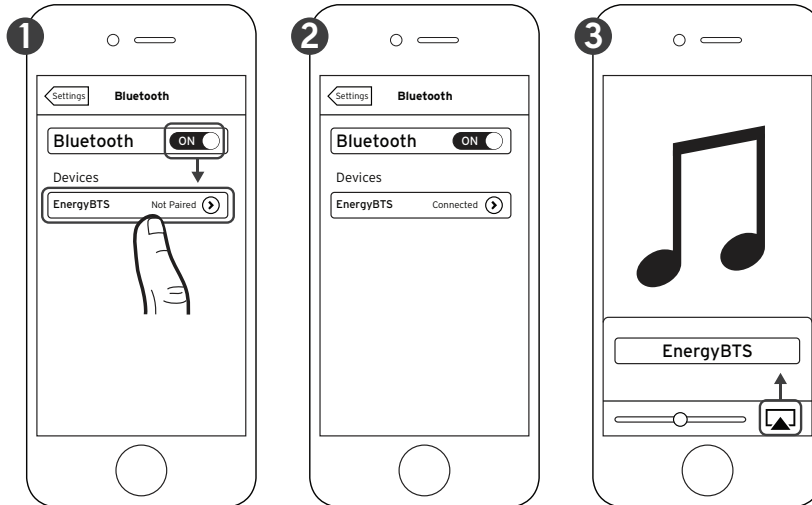
## TV REMOTE PROGRAMMING



To program Volume Up and Volume Down buttons repeat the steps shown and replace steps 4 and 6 with the button you want to program.

If you are trying to program a cable/satellite box remote or other universal remote without success, please try programming your TV or Cable Box remote instead.

## BLUETOOTH® WIRELESS TECHNOLOGY



\*Example only. Your device may differ.

You can pair a device equipped with *Bluetooth* wireless technology at any time by activating it on your device.

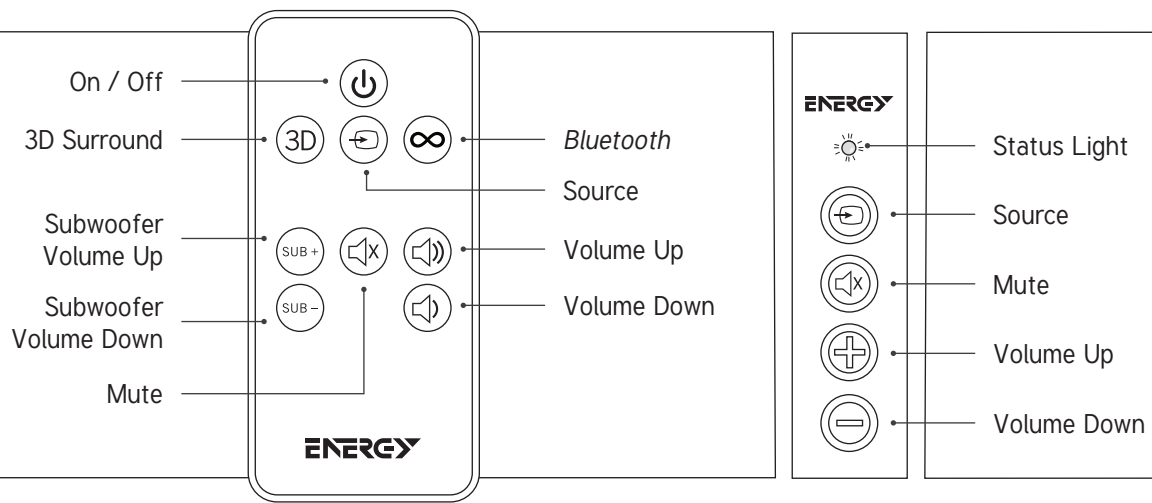
Once your device equipped with *Bluetooth* wireless technology is paired, the BTS 2.1 will automatically switch to the *Bluetooth* wireless technology input (SOLID BLUE LIGHT) and you can stream your music. If you switch inputs on the BTS 2.1, the *Bluetooth* wireless technology connection will automatically be terminated.

You must disconnect your device before pairing another device equipped with *Bluetooth* wireless technology by either:

- Pressing and holding the SOURCE button on the BTS 2.1 control panel 3 seconds
- Turning off *Bluetooth* wireless technology on the paired device
- Pressing the *Bluetooth* wireless technology button ( $\infty$ ) on the BTS 2.1 remote



# BUTTONS



## STATUS LIGHTS

---

**SOLID RED** Power Off (Standby Mode)

**FLASHES GREEN ONCE** 3D Surround turned on

**SOLID GREEN** Power On, Source is Optical Input

**FLASHES RED ONCE** 3D Surround turned off

**SOLID ORANGE** Power On, Source is Analog Input

**FLASHES BLUE QUICKLY** Waiting to pair with *Bluetooth* device

**SOLID BLUE** Power On, Source is Paired  
*Bluetooth* device

**FLASHES GREEN /  
ORANGE / BLUE** Volume Up, Volume Down, Subwoofer  
Volume Up or Subwoofer Volume  
Down is pushed

## STANDBY MODE

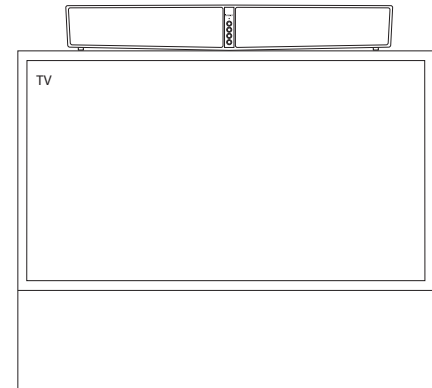
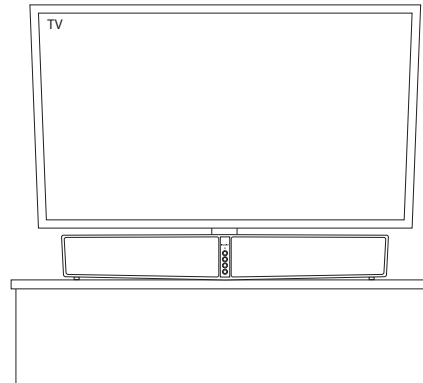
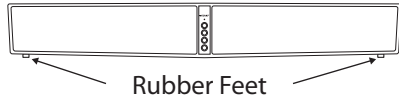
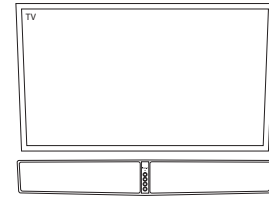
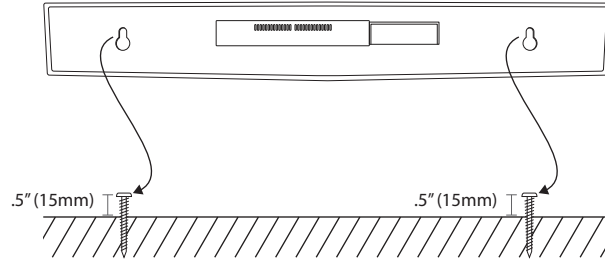
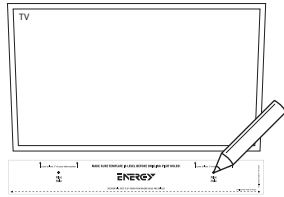
---

You do not need to turn off the BTS 2.1, just turn off your TV (or Satellite / Cable Box) and the BTS 2.1 will automatically go into standby mode in approximately 10 minutes.

Standby mode is indicated by a red status light on the front panel. When your TV (or Satellite / Cable Box) is turned back on the BTS 2.1 will automatically turn on again.

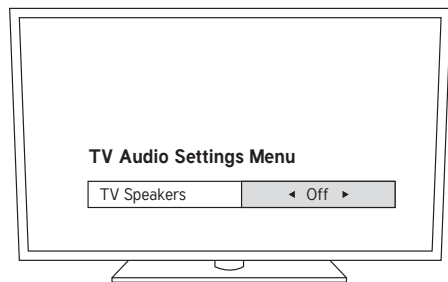
# PLACEMENT

---



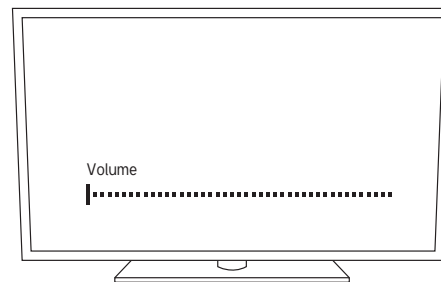
## TURN OFF TV SPEAKERS

---



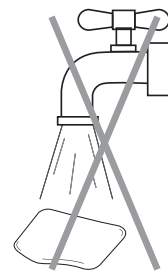
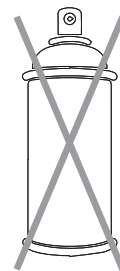
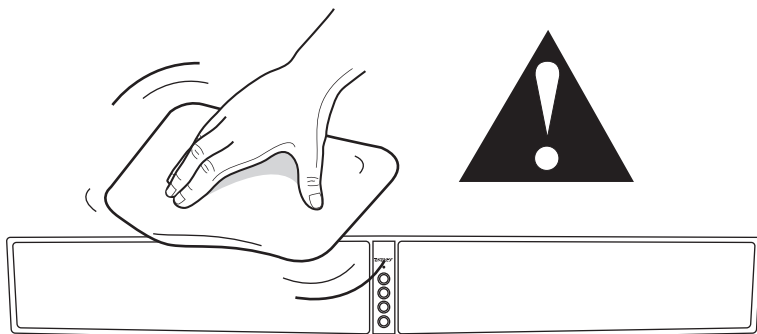
(Recommended)

OR



## CARE AND CLEANING

---



## TROUBLESHOOTING

---

### **BTS 2.1 will not Power On**

- Is it plugged into a live outlet?
- Is the rear power switch on?

### **No sound**

- Is it plugged into a live outlet and the rear power switch is on?
- Are all cables from the TV/Cable Box/Satellite Box plugged in tightly?
- If the optical cable is being used were the clear plastic caps from both ends removed before connecting?
- Is the volume turned up?
- Is standby off (no SOLID RED status light)?
- Is the source input correct?
- Turn off the rear power switch, then back on.

### **TV/Cable/Satellite Box Remote will not program**

- Carefully follow all remote programming instructions.
- Carefully go through the remote programming again, but **use the original remote that comes with the TV**. You DO NOT need to then reprogram using your cable/satellite/universal remote control.
- Program the original TV remote to the BTS 2.1 (if original is a different one), then use the universal remote without programming it.
- You may need to repeat programming of a function in some cases.
- There may be some cases the BTS 2.1 is unable to learn certain remote codes.

### **Bluetooth wireless technology does not work**

- Is the device paired to the BTS 2.1?
- Move your device closer to the BTS 2.1 and make sure it is paired.
- If the status light blinks RED while attempting to pair, start the pairing process over.

### **Subwoofer does not work**

- Are the two subwoofer wires connected properly to the soundbar?
- Is the subwoofer volume on the remote adjusted properly?

*For Questions, contact Energy Customer Service:*

*In the United States: 1-866-441-8208*



Manufactured under license from Dolby Laboratories. Dolby and the double-D symbol are registered trademarks of Dolby Laboratories.

The *Bluetooth*® word mark and logos are registered trademarks owned by *Bluetooth SIG, Inc.* and any use of such marks by Klipsch Group, Inc. is under license.



---

**[energyspeakers.com](http://energyspeakers.com)**

Register your Energy speaker at [energyspeakers.com/register](http://energyspeakers.com/register).  
3502 Woodview Trace Indianapolis, IN 46268 • 866.441.8208


Energy and the Energy logo are registered trademarks of Audio Products International Corp., registered in the U.S. and other countries. Audio Products International Corp. is a wholly owned subsidiary of Vox International Corporation.

# **ENERGY BTS 2.1**

---

**IMPORTANT SAFETY INSTRUCTIONS**

## **IMPORTANT SAFETY INSTRUCTIONS!**

1. READ these instructions.
2. KEEP these instructions.
3. HEED all warnings.
4. FOLLOW all instructions.
5. DO NOT use this apparatus near water.
6. CLEAN ONLY with dry cloth.
7. DO NOT block any ventilation openings. Install in accordance with the manufacturer's instructions.
8. DO NOT install near any heat sources such as radiators, heat registers, stoves, or other apparatus (including amplifiers) that produce heat.
9. DO NOT defeat the safety purpose of the polarized or grounding type plug. A polarized plug has two blades with one wider than the other. A grounding type plug has two blades and a third grounding prong. The wider blade or the third prong are provided for your safety. If the provided plug does not fit into your outlet, consult an electrician for replacement of the obsolete outlet.
10. PROTECT the power cord from being walked on or pinched, particularly at plugs, convenience receptacles, and the point where they exit from the apparatus.
11. ONLY USE attachments/accessories specified by the manufacturer.
12. USE ONLY with a cart, stand, tripod, bracket, or table specified by the manufacturer, or sold with the apparatus. When a cart is used, use caution when moving the cart/apparatus combination to avoid injury from tip-over. 
13. UNPLUG this apparatus during lightning storms or when unused for long periods of time.
14. REFER all servicing to qualified service personnel. Servicing is required when the apparatus has been damaged in any way, such as power-supply cord or plug is damaged, liquid has been spilled or objects have fallen into the apparatus, the apparatus has been exposed to rain or moisture, does not operate normally, or has been dropped.
15. DO NOT expose this apparatus to dripping or splashing and ensure that no objects filled with liquids, such as vases, are placed on the apparatus.
16. To completely disconnect this apparatus from the AC Mains, disconnect the power supply cord plug from the AC receptacle.



17. The mains plug of the power supply cord shall remain readily operable.
18. DO NOT overload wall outlets or extension cords beyond their rated capacity as this can cause electric shock or fire.



The exclamation point, within an equilateral triangle, is intended to alert the user to the presence of important operating and maintenance (servicing) instructions in the literature accompanying the product.



The lightning flash with arrowhead symbol within an equilateral triangle is intended to alert the user to the presence of uninsulated "dangerous voltage" within the product's enclosure that may be of sufficient magnitude to constitute a risk of electrical shock to persons.

**WARNING:** To reduce the risk of fire or electrical shock, do not expose this apparatus to rain or moisture.

**WARNING:** No naked flame sources - such as candles - should be placed on the product.

**WARNING:** Batteries (battery pack or batteries installed) shall not be exposed to excessive heat such as sunshine, fire or the like.

**WARNING:** Risk of leakage. Only use the specified type of batteries. Never mix new and used batteries. Observe correct polarity. Remove batteries from products that are not in use for extended periods of time. Store batteries in a dry place.

**WARNING:** Do not handle leaking or damage Lithium batteries.

**WARNING:** Danger of explosion if battery is incorrectly replaced. Replace only with the same or equivalent type.

**WARNING:** Do not place batteries in mouth or ingest. Keep out of reach of children and pets.

**WARNING:** Do not recharge non-rechargeable batteries.

Please dispose of any used batteries properly, following any local regulations. Do not incinerate.



**WARNING:** Do Not Open! Risk of Electrical Shock. Voltages in this equipment are hazardous to life. No user-serviceable parts inside. Refer all servicing to qualified service personnel.

Place the equipment near a main power supply outlet and make sure that you can easily access the power breaker switch.

**WARNING:** This product is intended to be operated ONLY from the AC Voltages listed on the back panel or included power supply of the product. Operation from other voltages other than those indicated may cause irreversible damage to the product and void the products warranty. The use of AC Plug Adapters is cautioned because it can allow the product to be plugged into voltages in which the product was not designed to operate. If the product is equipped with a detachable power cord, use only the type provided with your product or by your local distributor and/or retailer. If you are unsure of the correct operational voltage, please contact your local distributor and/or retailer.

## **FCC AND CANADA EMC COMPLIANCE INFORMATION**

This device complies with part 15 of the FCC Rules. Operation is subject to the following two conditions:

(1) This device may not cause harmful interference, and (2) this device must accept any interference received, including interference that may cause undesired operation.

NOTE: This equipment has been tested and found to comply with the limits for a Class B digital device, pursuant to part 15 of the FCC Rules. These limits are designed to provide reasonable protection against harmful interference in a residential installation. This equipment generates, uses and can radiate radio frequency energy and, if not installed and used in accordance with the instructions, may cause harmful interference to radio communications. However, there is no guarantee that interference will not occur in a particular installation. If this equipment does cause harmful interference to radio or television reception, which can be determined by turning the equipment off and on, the user is encouraged to try to correct the interference by one or more of the following measures:

- Reorient or relocate the receiving antenna.
- Increase the separation between the equipment and receiver.
- Connect the equipment into an outlet on a circuit different from that to which the receiver is connected.
- Consult the dealer or an experienced radio/TV technician for help.

Approved under the verification provision of FCC Part 15 as a Class B Digital Device.

Caution: Changes or modifications not expressly approved by the manufacturer could void the user's authority to operate this device.

Caution: To comply with the limits of the Class B digital device, pursuant to Part 15 of the FCC Rules, this device is to comply with Class B limits. All peripherals must be shielded and grounded. Operation with non-certified peripherals or non-shielded cables may result in interference to radio or reception.

This Class B digital apparatus complies with Canadian ICES-003. Cet appareil numérique de la classe B est conforme à la norme NMB-003 du Canada.

## **WIRELESS TRANSMITTER COMPLIANCE INFORMATION**

The term "IC:" before the radio certification number only signifies that Industry Canada technical specifications were met.

Le terme «IC:» avant le numéro de certification radio signifie seulement que les spécifications techniques d'Industrie Canada ont été respectées.

This device complies with part 15 of the FCC Rules and the applicable Industry Canada license-exempt RSS standard(s). Operation is subject to the following two conditions: (1) this device may not cause harmful interference, and (2) this device must accept any interference, including interference that may cause undesired operation of the device.

Le présent appareil est conforme aux CNR d'Industrie Canada applicables aux appareils radio exempts de licence. L'exploitation est autorisée aux deux conditions suivantes : (1) l'appareil ne doit pas produire de brouillage, et (2) l'utilisateur de l'appareil doit accepter tout brouillage radioélectrique subi, même si le brouillage est susceptible d'en compromettre le fonctionnement.

This equipment complies with FCC and IC radiation exposure limits set forth for an uncontrolled environment. This equipment should be installed and operated with minimum distance 20cm between the radiator and your body. This transmitter must not be co-located or operating in conjunction with any other antenna or transmitter.

Cet appareil est conforme à FCC et IC l'exposition aux rayonnements limites fixées pour un environnement non contrôlé. Cet appareil doit être installé et utilisé avec une distance minimale de 20 cm entre le radiateur et votre corps. Cet transmetteur ne doit pas être co-situé ou opérant en liaison avec toute autre antenne ou transmetteur.



**ENERGY**

Energy and the Energy logo are registered trademarks of Audio Products International Corp., registered in the U.S. and other countries. Audio Products International Corp. is a wholly owned subsidiary of Voxx International Corporation.