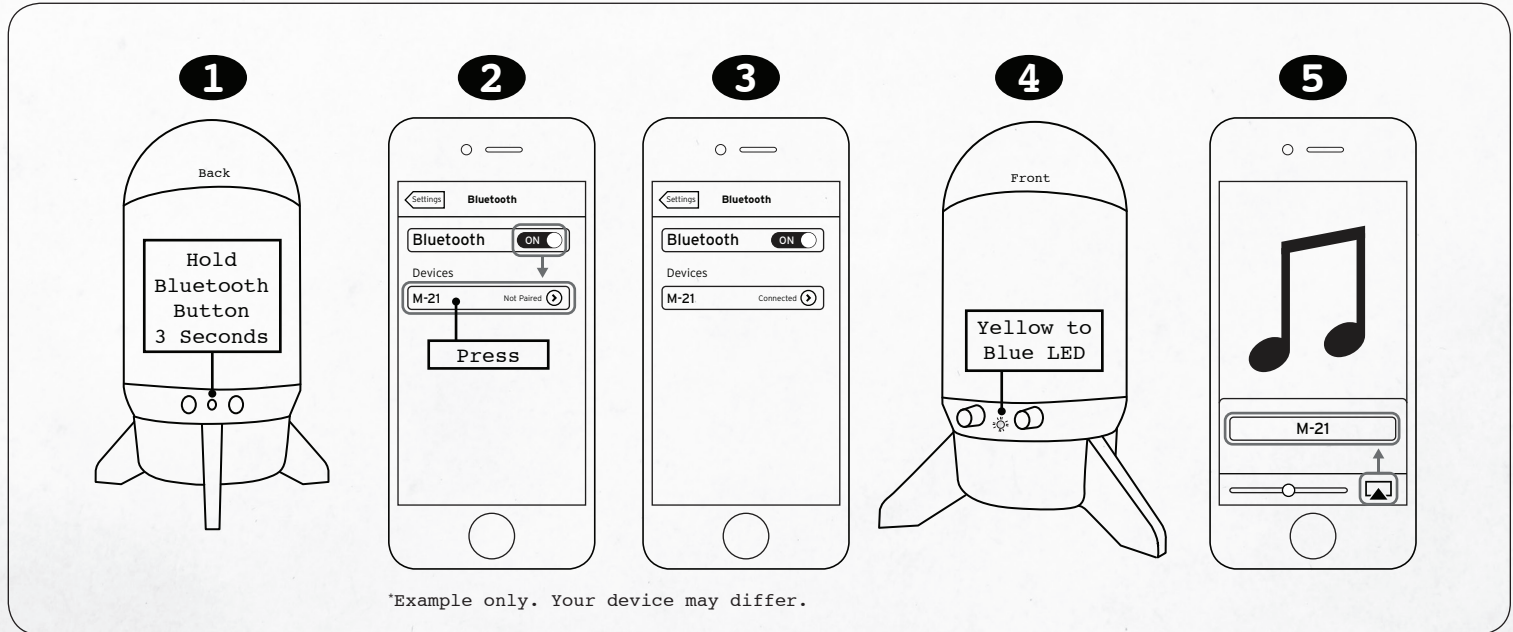


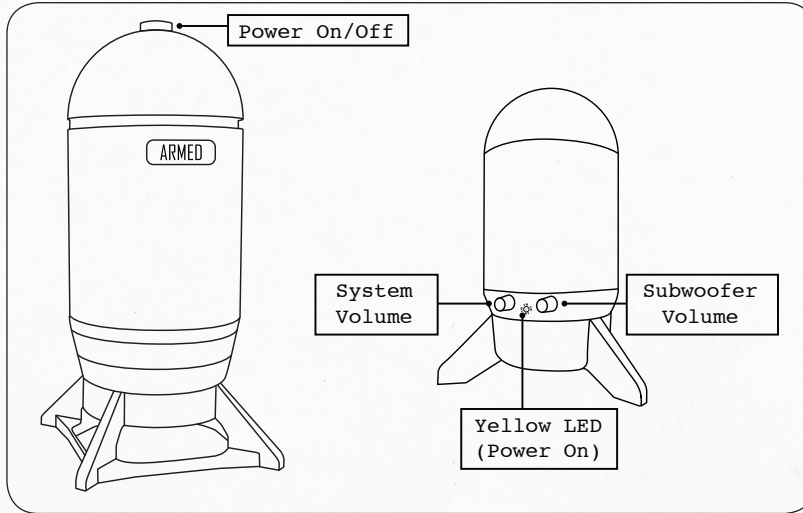
SECTION V: *BLUETOOTH* CONNECTION AND STREAMING

The M-21 has the capability for engagement of *Bluetooth* audio streaming. Initiate by pressing the designated *Bluetooth* button on the right satellite rear and then activate *Bluetooth* on your audio source device.

The M-21 will automatically switch to *Bluetooth* mode, allowing the commencement of music streaming. Maximum effective range for *Bluetooth* operation is 30 feet. [REDACTED]



SECTION VI: OPERATION UNDER USUAL CONDITIONS



SECTION VII: CLEANING

Deployment of a soft cloth to dust and/or wipe all cabinetry is required on an occasional basis for best presentation. Never use water or any type of cleaner or detergent on any part of the M-21.





ENERGY
POWER YOUR PASSION

energyspeakers.com

Register your Energy speaker at energyspeakers.com/register.
3502 Woodview Trace Indianapolis, IN 46268 • 866.441.8208

Energy, EnergyXStream and the Energy logo are registered trademarks of Audio Products International Corp., registered in the U.S. and other countries. Audio Products International Corp. is a wholly owned subsidiary of Voxx International Corporation.

The Bluetooth® word mark and logos are registered trademarks owned by Bluetooth SIG, Inc. and any use of such marks by Klipsch Group, Inc. is under license.