

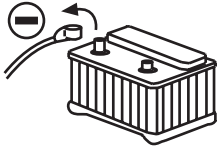
SAT RC 09 INSTALLATION MANUAL



CAUTION

- Only carry out the operations described in this manual.
- The installer is not authorized to remove the warranty seals or to access the interior parts of the products or accessories.
- The installer is not authorized to modify and/or adapt the product or the relative accessories.
- **The manufacturer declines all liability for damage to persons and/or property caused by incorrect installation of the product.**

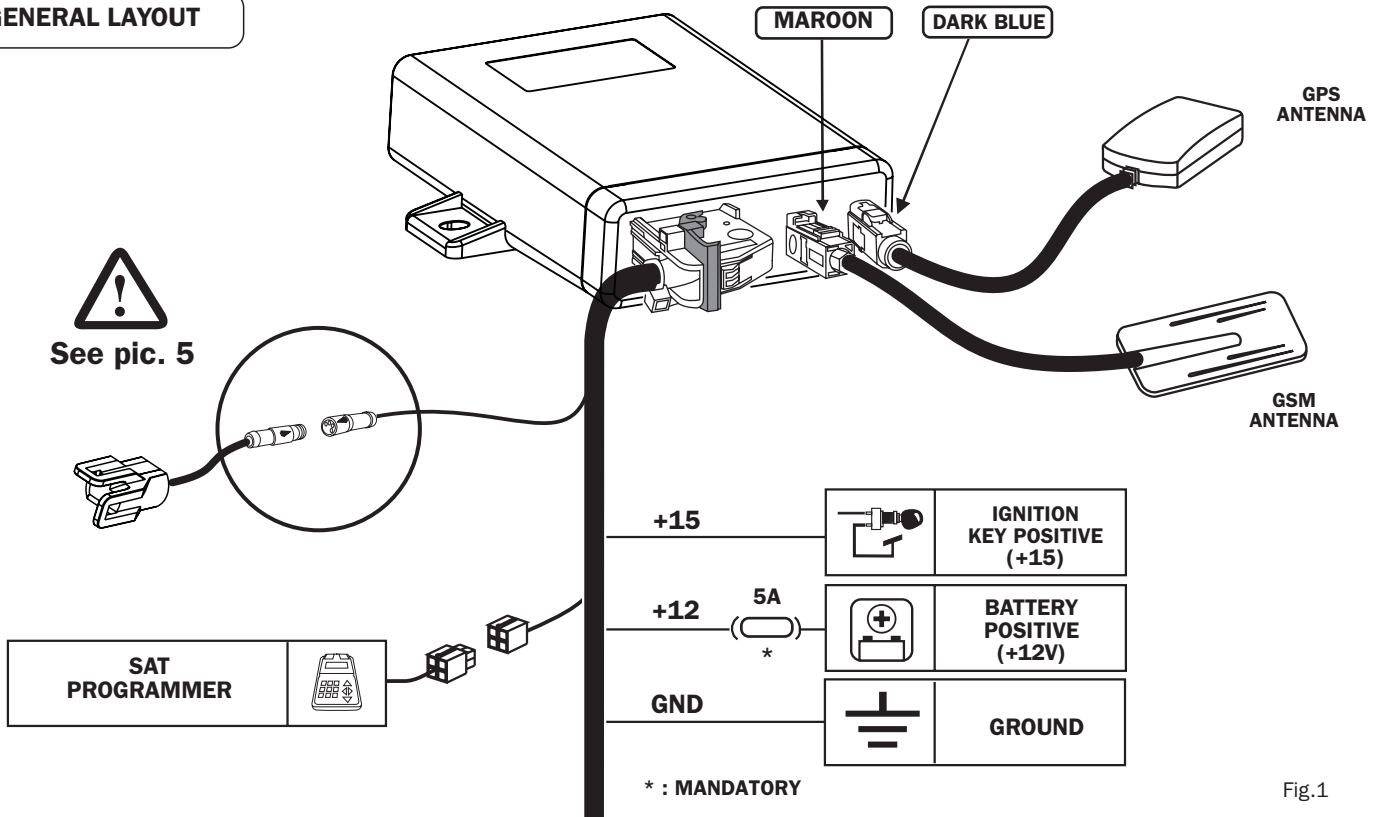
DISCONNECT THE VEHICLE'S BATTERY



TECHNICAL SPECIFICATIONS

Dimensions and weight:.....104X75X27, 168g
 Power supply voltage:.....12 VDC
 Temperature:.....-25°+70°C
 Power input*:.....<2mA
 *With the peripheral device connected, the GPS off, Sat Programmer disconnected and the internal buffer battery charged.
 Maximum current:.....<210mA

GENERAL LAYOUT



CONNECTOR CONNECTIONS

PHASE 1



Release and position the lever as shown in the figure before connecting the 18-pin loose connector to the terminal.

Fig.2

PHASE 2

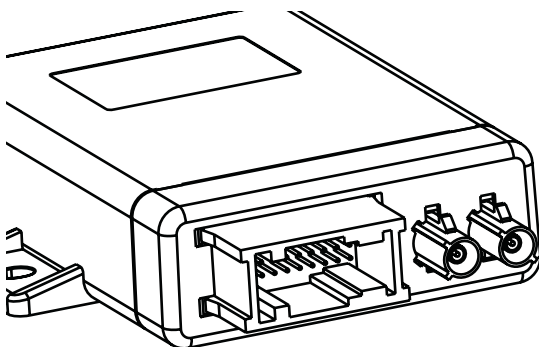
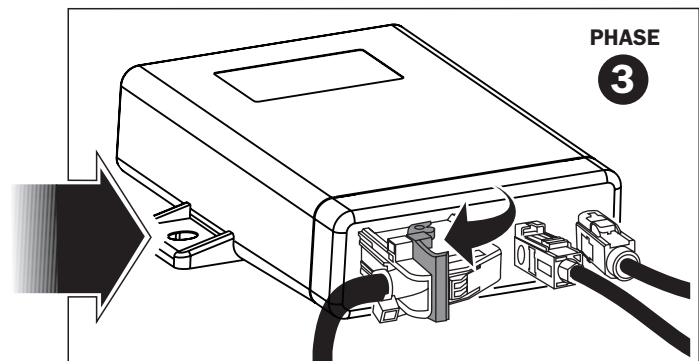


Fig.3

PHASE 3



Lock the connector to the terminal by positioning the lever as shown in the figure.

WARNING: make sure that the connector is inserted and locked to the terminal in the correct way.

Fig.4

CONNECTION CRASH SENSOR



CAUTION!
**CHECK THE CORRECT
CONNECTION**

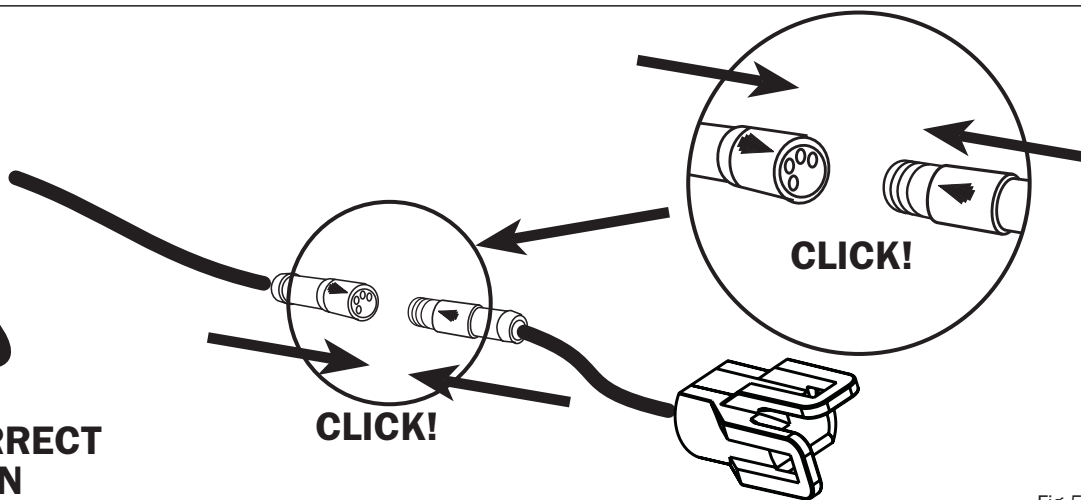


Fig.5



HOW TO POSITION THE DEVICE

- Position the device in a concealed part of the vehicle, inside the passenger compartment
- To allow the diagnosis and testing operations to be carried out without difficulty, it is essential to install the device in a position where it can be easily reached with the cable of the Sat programmer.
- Do not install the device under a mat, where it could be trodden on or crushed by a load.
- It is advisable to lock the device to a rigid part of the vehicle.

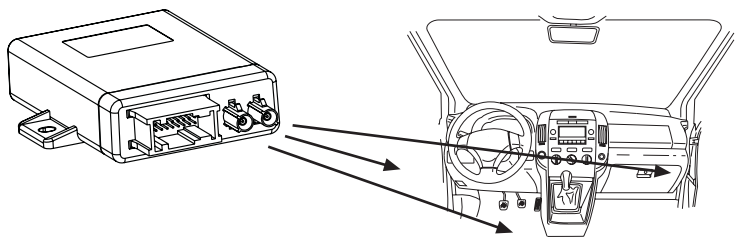
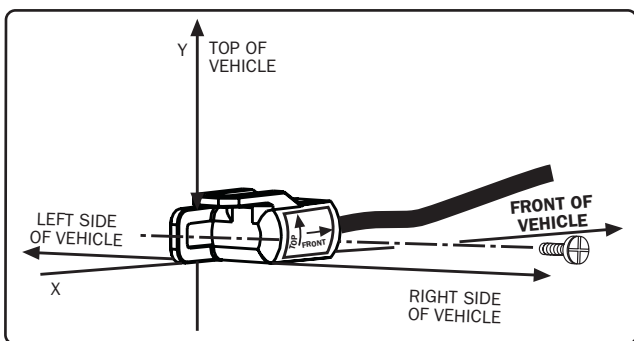


Fig.6



HOW TO POSITION THE CRASH SENSOR



- Fix the sensor temporarily in place with the screw.
- Check the position of the sensor by means of the relative Sat Programmer menu.
- Fix the sensor permanently in place.

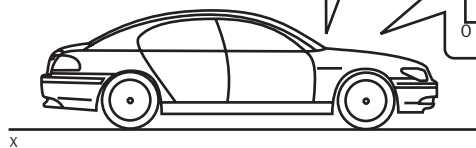
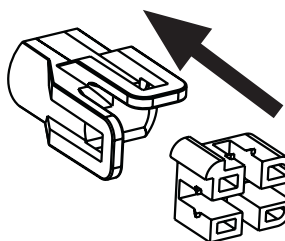


Fig. 7

FIXING WITH SPACER

Use the supplied spacer to install the sensor on a flat surface, opposite the fastening tabs (e.g. longitudinal frame members on the PASSENGER'S SIDE, surfaces BELOW the sensor). The sensor must NOT be turned. Comply with the position indicated on the sticker affixed to the side of the sensor.

HOW TO INSERT THE SPACER



⚠ Pay particular attention to the direction in which the spacer is inserted.

Fig. 8

FIXING IN THE VEHICLE

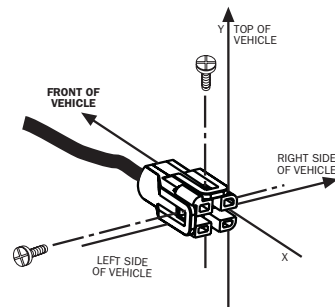
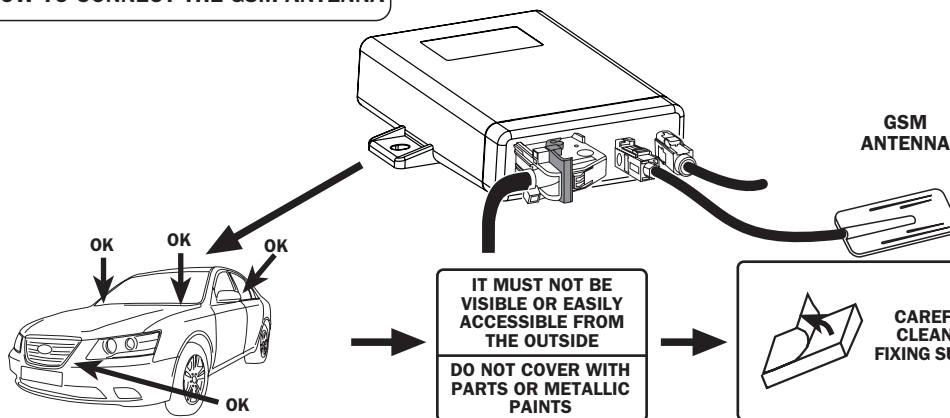


Fig. 9



HOW TO CONNECT THE GSM ANTENNA



ONCE YOU HAVE CHOSEN THE POSITION FOR THE ANTENNA, MAKE SURE THAT THE RECEPTION IS GOOD BEFORE FIXING IT IN PLACE.
- CONNECT THE SAT PROGRAMMER AND TEST TO MAKE SURE THAT EVERYTHING WORKS PROPERLY BY MEANS OF THE APPROPRIATE FUNCTION (CONSULT THE RELATIVE MANUAL).

Fig. 10

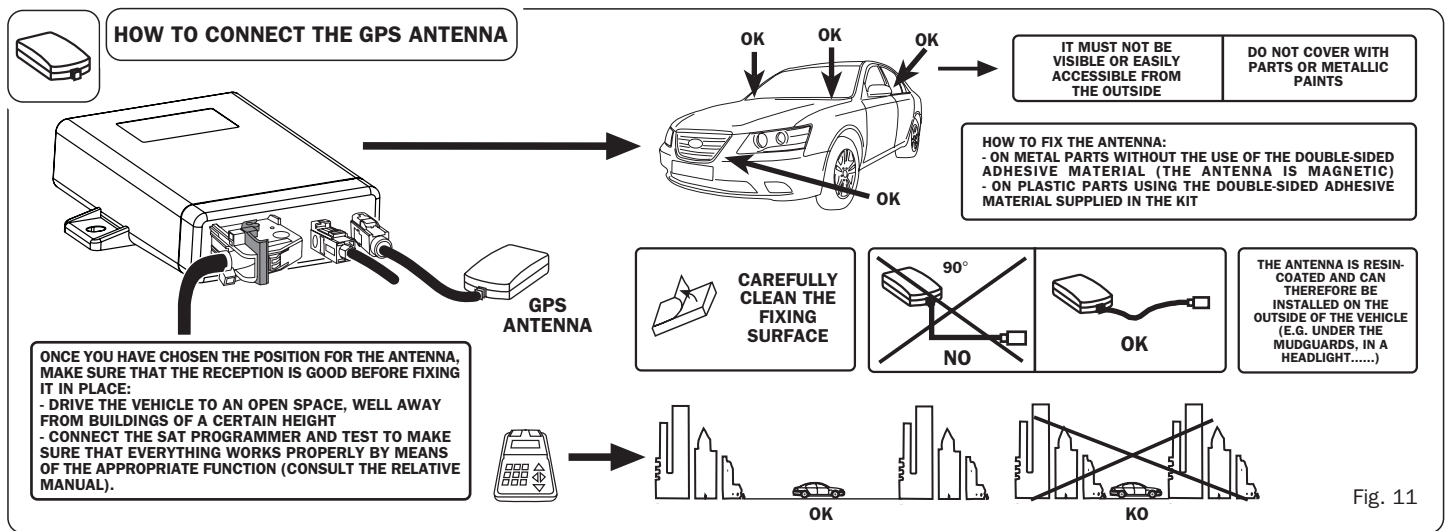


Fig. 11

Meta System S.p.A.

Model: SAT RC 09
 FCC ID.: P3097802

This device complies with Part 15 of the FCC rules subject to the following two conditions:

- 1) This device may not cause harmful interference.
- 2) This device must accept all interference received, including interference that may cause undesired operation.

NOTE: This equipment has been tested and found to comply with the limits for a Class B digital device, pursuant to Part 15 of the FCC Rules. These limits are designed to provide reasonable protection against harmful interference in a residential installation. This equipment generates, uses and can radiate radio frequency energy and, if not installed and used in accordance with the instructions, may cause harmful interference to radio communications. However, there is no guarantee that interference will not occur in a particular installation.

If this equipment does cause harmful interference to radio or television reception, which can be determined by turning the equipment off and on, the user is encouraged to try to correct the interference by one or more of the following measures:

- Reorient or relocate the receiving antenna.
- Increase the separation between the equipment and receiver.
- Connect the equipment into an outlet on a circuit different from that to which the receiver is connected.
- Consult the dealer or an experienced radio/TV technician for help.

R&TTE Declaration Of Conformity (DoC)

CE 0470

We: **Meta System S.p.A.**

with the address:

Via Majakovskij 10 b/c/d/e 42124 Reggio Emilia –Italy

Declare

Under own responsibility that the product:

SAT RC 09

To which this declaration relates is in conformity with the essential requirements and other relevant requirements of the R&TTE Directive (1999/5/EC).

This product is in conformity with the following standards

- | | |
|-----------------------------|--------------------------|
| - Health & Safety (art.3.1) | EN 60950-1 – |
| - EMC (art.3.2) | ETSI EN 301 489-1/-7/-19 |
| - Spectrum | ETSI EN 301 511 |
| - Human exposure | EN62311 |

According to Directive 1999/5/CE

Technical Director

Lasagni

Cesare
Reggio Emilia , 15/03/2010

