

Indoor Beacon

Model: i10

Datasheet V1.0

Part #	Description
i10-6001A	209070001, White color and 200 meters long-range beacon with 2pcs Alkaline AA batteries pre-installed; Bluetooth® 5.0, pre-flashed MiniBeacon Plus software supports broadcasting iBeacon and Eddystone simultaneously.

The Indoor Beacon i10 is a new generation beacon that is max. 200 meters long range advertising and 5years battery lifetime. The detachable housing structure makes it easy to replace the 2pcs AA batteries.

It is loaded with Bluetooth® 5.0 hardware platform and MiniBeacon Plus intelligence software that advertises standard iBeacon, Eddystone (UID, URL, TLM) simultaneously. It is attached to objects by screws mounting or double-sided adhesive for indoor location, activity monitoring, asset tracking etc. so as to realize the remote data management. It is able to configure the indoor beacon i10 via configuration app BeaconSET+ to different parameters so that to meet different applications.

FEATURE

- Advertise iBeacon & Eddystone simultaneously
- Bluetooth® 5.0 chipset nRF52 series
- 5 years battery lifetime with default settings
- Easy to replace the AA batteries (default: alkaline)
- The max. 200 meters advertising distance



i10 Indoor Beacon

APPLICATION

- Asset tracking
- Indoor location
- Activity monitoring
- Inventory tracking

ACTIVATE i10

- Please DO take out the battery isolator from the i10 indoor beacon before using it.

CONFIGURATION TOOL

- BeaconSET+ (iOS & Android);

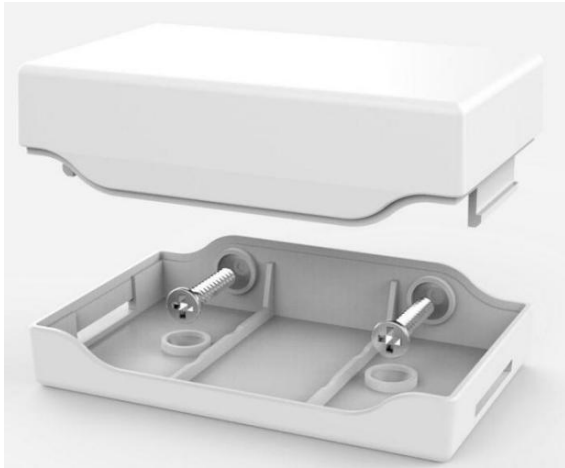
CERTIFICATION

- iBeacon MFi License (iBC-14-00582)
- Bluetooth® EPL Certification
- FCC Regulation (FCC Part 15.)
- CE Regulation (Included EN300328/301489/60950/62479)

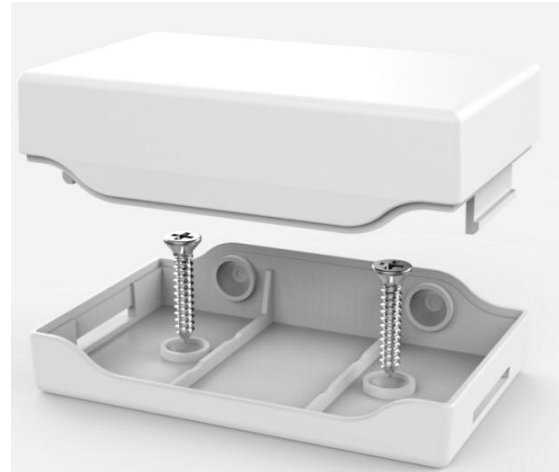
MOUNTING METHOD

- Attach i10 to the objects by double-sized adhesive;
- Fix i10 to the objects by screws mounting. There are two positions for screws mounting as showing in the pics below:

1) On the side of the casing;



2) At the bottom casing;



BATTERY ASSEMBLY

- Pre-installed 2pcs alkaline AA (LR6) batteries;
- If need to replace the batteries, please do check the polarity of batteries and battery-socket before assembly;

ELECTRONIC PARAMETER

Item	Value	Remarks
Case Color	White	Other colors can be customized
Battery Model	2 x AA (LR6)	2pcs alkaline batteries, 2200mAh, 3.0V
Operation Voltage	1.8-3.9V	DC
Transmission Circuit	5.3mA (Max.)	Tested at 0dBm transmission power
Transmission Range	200 meters	Maximum @ open space
Transmission Power	-40dBm to +4dBm	Configurable
Broadcasting Interval	900ms	Default setting, configurable
Antenna	50ohm	On board / PCB Antenna
Accessories	Double-sided adhesive	1pc, high strength
	Screws	2pcs screws and 2pcs plastic holders
Net Weight	56.0g	With batteries
Size	73.5 x 44.8 x 24.2MM	Null

PARAMETER SETTING

Each indoor beacon i10 has been pre-configured in the factory before the shipment. Here below is given the main parameters and default settings.

Type	Item	Default Settings
iBeacon	UUID (16 bytes)	E2C56DB5-DFFB-48D2-B060-D0F5A71096E0 (Proximity)
	Major (2 bytes)	0
	Minor (2 bytes)	0
Eddystone	Namespace ID @UID	random (10 bytes)
	Instance ID @UID	random (6 bytes)
	URL	https://www.minew.com
Base Parameters	Measured Power	-59 (0xC5)
	Radio Tx power	6 (0dBm)
	Adv. Interval	9(900ms)
	Beacon ID	random, it is the MAC address of beacon.
	Beacon Name	i10
	Connectable	yes (it is configuration mode)
	Password	minew123 (8 characters only)
Extra Function	Reset factory	available
	Power off	available
	Modify password	available
	Remove password	available
	Update firmware	available

PACKING INFORMATION



*Standard package

Details	Min. Package	Carton
Quantity(i10)	8pcs /box	80pcs/carton
Net Weight	0.7kg/ box	7Kg/carton
Gross Weight	0.85kg/ box	9Kg/carton
Size	32 x 11 x 8 CM	32 x 23 x 40 CM

TECHNICAL DOCUMENT

Item	Version	File Name	Date
Datasheet	V1.0	i10 Indoor Beacon Datasheet	12 nd Sep, 2019
Instruction	V2.0	MiniBeacon Plus Configuration Instruction	5 th May, 2018
SDK	V2.0	Both iOS and Android	18 th May, 2018

FIRMWARE FLASH

1. J-LINK Programmer Kit;
2. Programming ports definition;

Please contact MINEW sales team to ask more related information if needed.

DECLARATION

The contents of this datasheet are subject to change without prior notice for further improvement. Minew team reserves the right to explain all the terms of this datasheet.

CONTACT

Manufacturer: Shenzhen Minew Technologies Co., Ltd.

Phone: [+86 \(755\) 2103 8160](tel:+86(755)21038160)

Email: info@minew.com

Address:

3rd Floor, I Building, Gangzhilong Science Park,
QingLong Road, Longhua District,
Shenzhen 518109
China

<https://www.minew.com>

<END>

changes or modifications not expressly approved by the party responsible for compliance could void the user's authority to operate the equipment.

This device complies with Part 15 of the FCC Rules. Operation is subject to the following two conditions:

- (1) this device may not cause harmful interference, and**
- (2) this device must accept any interference received, including interference that may cause undesired operation.**

Note: This equipment has been tested and found to comply with the limits for a Class B digital device, pursuant to Part 15 of the FCC Rules. These limits are designed to provide reasonable protection against harmful interference in a residential installation. This equipment generates, uses, and can radiate radio frequency energy, and if not installed and used in accordance with the instructions, may cause harmful interference to radio communications. However, there is no guarantee that interference will not occur in a particular installation. If this equipment does cause harmful interference to radio or television reception, which can be determined by turning the equipment off and on, the user is encouraged to try to correct the interference by one or more of the following measures:

- Reorient or relocate the receiving antenna.
- Increase the separation between the equipment and receiver.
- Connect the equipment into an outlet on a circuit different from that to which the receiver is connected.
- Consult the dealer or an experienced radio/TV technician for help.