

**PORSCHE DESIGN**

**USER MANUAL**

Sport TWS Earphones PDT40

# Contents

---

1	Important safety instructions	2
	Hearing safety	2
	General information	2

---

2	Your True Wireless Earphones	3
	What is in the box	3
	Other devices	3
	Overview of your True Wireless Earphones	4

---

3	Get started	5
	Charge the battery	5
	Pair the earpieces with your Bluetooth device for the first time	6

---

4	Use your earphones	7
	Connect the earphones to your Bluetooth device	7
	Control ANC (Active Noise Cancellation)	7
	Manage your calls and music	8
	LED indicator status	8
	Voice assistant	9

---

5	Reset the earphones	10
---	---------------------	----

---

6	Technical data	10
---	----------------	----

---

7	Notice	11
	Declaration of conformity	11
	Disposal of your old product and battery	11
	Remove the integrated battery	11
	Compliance with EMF	12
	Environmental information	12
	Notice of compliance	12

---

8	Trademarks	14
---	------------	----

---

9	Frequently asked questions	15
---	----------------------------	----

# 1 Important safety instructions

## Hearing safety



### Danger

- To avoid hearing damage, limit the time you use earphones at high volume and set the volume to a safe level. The louder the volume, the shorter the safe listening time is.

Be sure to observe the following guidelines when using your earpieces:

- Listen at reasonable volumes for reasonable periods of time.
- Be careful not to adjust the volume continuously upwards as your hearing adapts.
- Do not turn up the volume so high that you cannot hear what is around you.
- You should use caution or temporarily discontinue use in potentially hazardous situations.
- Excessive sound pressure from earphones can cause hearing loss.
- Using earphones with both ears covered while driving is not recommended and may be illegal in some areas.
- For your safety, avoid distractions from music or phone calls while in traffic or other potentially dangerous environments.

## General information

To avoid damage or malfunction:



### Caution

- Do not expose earphones to excessive heat.
- Do not drop your earphones.
- Earphones shall not be exposed to dripping or splashing. (Refer to the IP rating of specific product.)
- Do not allow your earphones to be submerged in water.
- Do not use any cleaning agents containing alcohol, ammonia, benzene or abrasives.
- If cleaning is required, use a soft cloth, if necessary dampened with a minimum amount of water or diluted mild soap, to clean the product.
- The integrated battery shall not be exposed to excessive heat such as sunshine, fire or the like.
- Danger of explosion if battery is incorrectly replaced.
- Replace only with the same or equivalent type.
- Disposal of a battery into fire or a hot oven, or mechanically crushing or cutting a battery, can result in an explosion.
- Leaving a battery in an extremely high temperature surrounding environment can result in an explosion or the leakage of flammable liquid or gas.
- A battery subjected to extremely low air pressure may result in an explosion or the leakage of flammable liquid or gas.

Operating and storage temperatures and humidity:

- Store in a place where the temperature is between  $-20^{\circ}\text{C}$  ( $-4^{\circ}\text{F}$ ) and  $50^{\circ}\text{C}$  ( $122^{\circ}\text{F}$ ) with up to 90% relative humidity.
- Operate in a place where the temperature is between  $0^{\circ}\text{C}$  ( $32^{\circ}\text{F}$ ) and  $45^{\circ}\text{C}$  ( $113^{\circ}\text{F}$ ) with up to 90% relative humidity.
- Battery life may be shorter in high or low temperature conditions.
- Replacement of a battery with an incorrect type risks severely damaging the earphones and the battery (for example, in the case of some lithium battery types).

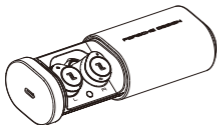
## 2 Your True Wireless Earphones

Congratulations on your purchase, and welcome to Porsche Design! With these True Wireless Earphones you can:

- Enjoy convenient wireless handsfree calls.
- Enjoy and control music wirelessly.
- Switch between calls and music.

---

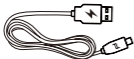
### What is in the box



Porsche Design Sport TWS Earphones PDT40



Replaceable rubber ear tip covers x 3 pairs



USB-C charging cable (for charging only)



Wrist strap



Quick start guide



Global warranty



Safety leaflet

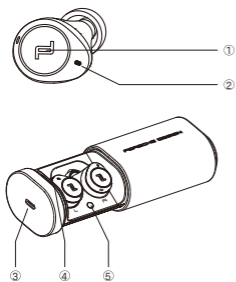
---

### Other devices

Requires a mobile phone or device (e.g. notebook, tablet, Bluetooth adapters, MP3 players, etc) which supports Bluetooth and is compatible with the earpieces (see 'Technical data' on page 10).

---

## Overview of your True Wireless Earphones



- 1 Multi-function touch
- 2 LED indicator (earpieces)
- 3 USB-C charging slot
- 4 LED indicator (charging box)
- 5 Factory reset button

# 3 Get started

## Charge the battery

### Note

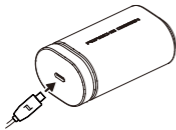
- Before you use your earpieces for the first time, place them in the charging box and charge the battery for three hours for optimum battery capacity and lifetime.
- Use only the original USB-C charging cable to avoid any damage.
- Finish your call before charging. Connecting the earpieces to charge will power them off.

## Charging box

Plug one end of the USB-C cable into the charging box and the other end into the power source.

↳ The charging box starts charging.

- Charging process is verified by a white LED light on the charging box.
- When the charging box is fully charged, four LED indicators turn on.



### Tip

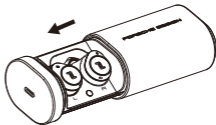
- The charging box serves as a portable backup battery for charging the earpieces. When the charging box is fully charged, it will fully recharge the earpieces three times.

## Earpieces

Place the earpieces in the charging box and close the slide.

↳ The earpieces start charging.

- LED indicator on earpieces turn on for five seconds when fully charged.
- LED indicator on earpieces turn on for 10 seconds when charging.



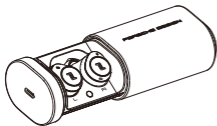
### Tip

- Normally, a full charge takes two hours (for the earpieces or charging box) by USB cable.

---

## Pair the earpieces with your Bluetooth device for the first time

- 1 Make sure the earpieces are fully charged and powered on.
- 2 Slide open the charging box cover.



- ↳ The LEDs on both earpieces flash white and blue alternately.

↳ The earpieces are now in pairing mode and are ready to pair with a Bluetooth device (e.g. a mobile phone).
- 3 Turn on the Bluetooth function of your Bluetooth device.
- 4 Pair the earpieces with your Bluetooth device. Refer to the user manual of your Bluetooth device.

### Note

- After powering on, if the earpieces cannot find any previously connected Bluetooth device, they will automatically switch to pairing mode.

The following example shows you how to pair the earpieces with your Bluetooth device.

- 1 Turn on the Bluetooth function of your Bluetooth device, select Porsche Design PDT40.

- 2 Enter the earpieces' password "0000" (four zeros) if prompted. For those devices featuring Bluetooth 3.0 or higher, there is no need to enter a password.



Porsche Design PDT40

---

## Single earpiece (Mono mode)

Take either right or left earpiece out from charging box for mono use. The earpiece will power on automatically. You will hear a voice from the earpieces saying "Power on".

### Note

- Take the second earpiece from the charging box and they will pair with each other automatically.

---

## Pair the earpieces with another Bluetooth device

If you want to pair another Bluetooth device with the earpieces, make sure the Bluetooth function on any other previously paired device is turned off. Place earpieces into your ears, then press and hold the buttons on both earpieces for five seconds. Release when 'Pairing' voice prompt is heard.

### Note

- The earpieces store four devices in the memory. If you try to pair more than four devices, the earliest paired device is replaced by the new one.

## 4 Use your earphones

### Connect the earpieces to your Bluetooth device

- 1 Turn on the Bluetooth function of your Bluetooth device.
- 2 Slide open the charging box cover.
  - ↳ The blue LED flashes.
  - ↳ The earpieces will search the last connected Bluetooth device and reconnect to it automatically. If the last connected device is not available, the earpieces will enter pairing mode.

#### Tip

- The earpieces cannot connect to more than one device at the same time. If you have two paired Bluetooth devices, only turn on the Bluetooth function of the device that you want to connect.
- If you turn on the Bluetooth function of your Bluetooth device after turning on the earpieces, you have to go to the Bluetooth menu of the device and connect the earpieces to the device manually.

#### Note

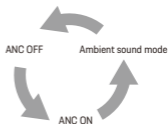
- If the earpieces fail to connect to any Bluetooth device within three minutes, they will turn off automatically to save the battery life.
- Some Bluetooth devices may not automatically find a connection. In this case, you have to go to the Bluetooth menu of your device and connect the earpieces manually.

### Control ANC (Active Noise Cancellation)

#### Enable ANC

Different ANC modes can be toggled by double tapping on the left earpiece.

- ANC function is automatically activated when earpieces are placed in the ear.
- Double tap the multi-function button on the left earpiece twice, it will change to Ambient sound mode.
- Double tap the multi-function button on the left earpiece twice more. It will turn the ANC function off.



#### Tip

- When connected to a Bluetooth device, removing the earpieces will automatically activate sleep mode after three minutes. When you put the earpieces back in your ears they will return to active mode.

Task	Multi-function button	Operation
ANC ON	Left earpiece	Double tap
Ambient sound mode	Left earpiece	Double tap
ANC OFF	Left earpiece	Double tap
Quick ambient mode	Right earpiece	Tap and hold



---

## ANC LED indicator status

---

Earphones status	Indicator
ANC mode is toggled	The blue LED will turn on

---

## Power on/off

---

Task	Multi-function button	Operation
Turn the earpieces on		Take earpieces out of the charging box to power on
Turn the earpieces off		Put earpieces back into the charging box to power off

---

## Manage your calls and music

---

### Music control

Task	Multi-function button	Operation
Play or pause music	Right earpiece	Double tap
Skip forward	Right earpiece	Triple tap
Adjust volume +/-		Via mobile phone control

### Call control

Task	Multi-function button	Operation
Pick up / Hold call	Right earpiece	Double tap
Reject call / Hang up call	Right earpiece	Tap and hold one second

---

## LED indicator status

---

Earphones status	Indicator
The earpieces are connected to a Bluetooth device	White LED blinks every five seconds
The earpieces are ready for pairing	The LED flashes blue and white alternately
The earpieces are on but not connected to a Bluetooth device	White LED blinks every second (auto turn off after three minutes)
Low battery level (earpieces)	Blue LED blinks twice every five seconds
Battery is fully charged (charging box)	Refer to case LED

## Charging box (four blue LEDs)

Charging box LED (USB on)	Indicator
	○ ○ ○
	●  ○ ○
	● ●  ○
	● ● ● ● Remain lit as long as USB is connected

Charging box LED (USB off)	Indicator
	● ○ ○ ○
	● ● ○ ○
	● ● ● ○
	● ● ● ●



Tip

- When USB is not connected, the LED remains lit for 30 seconds when the case is opened or closed.

## Battery LED indicator on Bluetooth device

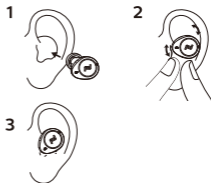
A battery indicator will be shown on the screen when connected to earphones or another Bluetooth device, (refer to mobile phone's operation manual).



## Voice assistant

Task	Multi-function button	Operation
Trigger voice assistant (Siri/Google)	Left earpiece	Tap and hold for one second

## How to wear



## 5 Reset the earpieces

If you encounter any pairing or connection issue, you can follow the procedures below to reset your earpieces.

- 1 On your Bluetooth device, go to the Bluetooth menu and remove **Porsche Design PDT40** from the device list.
- 2 Turn off the Bluetooth function of your Bluetooth device.
- 3 Tap and hold multi-function button for >25 seconds on each earpiece individually.
- 4 Return earpieces to charging box and close the lid.
- 5 Follow steps in 'Use your earpieces-Connect the earpieces to your Bluetooth device.'
- 6 Pair the earpieces with your Bluetooth device, select **Porsche Design PDT40**.

## 6 Technical data

- Music time — ANC enabled: 4.5 hours | ANC disabled with Bluetooth: 5 hours
- Talk time — ANC enabled: 4.5 hours | ANC disabled: 5 hours
- Standby time — 200 hours
- Charging time: 2 hours
- Lithium-ion battery 50 mAh on each earpiece, Lithium-ion battery 410 mAh on charging box
- Bluetooth version: 5.0
- Compatible Bluetooth profiles:
  - HFP (Hands-free profile)
  - A2DP (Advanced audio distribution profile)
  - AVRCP (Audio video remote control profile)
- Supported audio codec: AAC, SBC
- Frequency range: 2.402-2.480 GHz
- Operation frequency: 110-190kHz
- Transmitter power: < 6 dBm
- Max. H-field strength: 32.42 dBuA/m (83.92 dBuV/m)
- Operating range: up to 10 meters (33 feet)
- Auto power off
- USB-C port for charging
- Low battery warning: available



### Note

- Specifications are subject to change without notice.

## 7 Notice

### Declaration of conformity

Hereby, MMD Hong Kong Holding Limited declares that this product is in compliance with the essential requirements and other relevant provisions of Directive 2014/53/EU as well as UK Radio Equipment Regulations SI 2017 No.1206. You can find the Declaration of Conformity on [www.porsche-design.com](http://www.porsche-design.com).

### Disposal of your old product and battery



Your product is designed and manufactured with high quality materials and components which can be recycled and reused.



This symbol on a product means that the product is covered by European Directive 2012/19/EU.



This symbol means that the product contains a built-in rechargeable battery covered by European Directive 2013/56/EU which cannot be disposed of with normal household waste. We strongly advise you to take your product to an official collection point or a Porsche Design service centre to have a professional remove the rechargeable battery. Inform yourself about the local separate collection system for electrical and electronic products and rechargeable batteries. Follow local rules and never dispose of the product and rechargeable batteries with normal household waste. Correct disposal of old products and rechargeable batteries helps prevent negative consequences for the environment and human health.

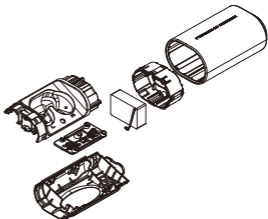
### Remove the integrated battery

If there is no collection/recycling system for electronic products in your country, you can protect the environment by removing and recycling the battery before disposing of the earphones.

- Make sure the earpieces are disconnected from the charging box before removing the battery.



- Make sure the charging box is disconnected from the USB charging cable before removing the battery.



---

## Compliance with EMF

This product complies with all applicable standards and regulations regarding exposure to electromagnetic fields.

---

## Environmental information

All unnecessary packaging has been omitted. We have tried to make the packaging easy to separate into three materials: cardboard (box), polystyrene foam (buffer) and polyethylene (bags, protective foam sheet.)

Your system consists of materials which can be recycled and reused if disassembled by a specialized company. Please observe the local regulations regarding the disposal of packaging materials, exhausted batteries and old equipment.

---

## Notice of compliance

The device complies with the FCC rules, Part 15. Operation is subject to the following two conditions:

1. This device may not cause harmful interference, and
2. This device must accept any interference received, including interference that may cause undesired operation.

### FCC rules

This equipment has been tested and found to comply with the limits for a Class B digital device, pursuant to part 15 of the FCC Rules. These limits are designed to provide reasonable protection against harmful interference in a residential installation. This equipment generates, uses and can radiate radio

frequency energy and, if not installed and used in accordance with the instruction manual, may cause harmful interference to radio communications.

However, there is no guarantee that interference will not occur in a particular installation. If this equipment does cause harmful interference to radio or television reception, which can be determined by turning the equipment off and on, the user is encouraged to try to correct the interference by one or more of the following measures:

- Reorient or relocate the receiving antenna.
- Increase the separation between equipment and receiver
- Connect the equipment to an outlet on a circuit different to that to which the receiver is connected.
- Consult the dealer or an experienced radio/TV technician for help.

### FCC Radiation Exposure Statement:

This equipment complies with FCC radiation exposure limits set forth for an uncontrolled environment.

This transmitter must not be co-located or operated in conjunction with any other antenna or transmitter.

Caution: The user is cautioned that changes or modifications not expressly approved by the party responsible for compliance could void the user's authority to operate the equipment.

### Canada:

This device contains license-exempt transmitter(s)/receiver(s) that comply with Innovation, Science and Economic Development Canada's license-exempt RSS(s). Operation is subject to the following two conditions:

- (1) This device may not cause interference.
- (2) This device must accept any interference, including interference that may cause undesired operation of the device.

#### IC Radiation Exposure Statement:

This equipment complies with Canada radiation exposure limits set forth for uncontrolled environments.

This transmitter must not be co-located or operated in conjunction with any other antenna or transmitter.

BC

#### Avis de conformité

Cet appareil satisfait aux règlements de la FCC partie 15 du Code of Federal Regulations. Son fonctionnement est assujéti aux deux conditions suivantes :

1. Cet appareil ne doit pas causer d'interférence préjudiciable et
2. L'appareil doit accepter toute interférence reçue, y compris les interférences qui peuvent causer un fonctionnement non désiré.

#### Règlement de la FCC

Cet équipement a été testé et jugé compatible avec les limites s'appliquant aux appareils numériques de la classe B, conformément à l'article 15 du règlement de la FCC. Ces limites ont été définies pour fournir une protection raisonnable contre les interférences nuisibles dans le cadre d'une installation résidentielle. Cet équipement génère, utilise et peut émettre de l'énergie radiofréquence et, s'il n'est pas installé ni utilisé conformément aux instructions, peut causer des interférences gênantes pour les communications radio.

Rien ne garantit toutefois que des interférences ne surviendront pas dans une installation particulière. Si cet équipement cause des interférences nuisibles pour la réception de la radio ou de la télévision, ce qui peut être déterminé en mettant l'équipement hors tension puis sous tension, l'utilisateur devra essayer de corriger ces interférences en effectuant une ou plusieurs des opérations suivantes :

Déplacez l'antenne de réception.

Augmentez la distance entre l'équipement et le récepteur.

Branchez l'équipement à une prise d'un circuit autre que celui sur lequel le récepteur est branché.

Consultez le détaillant ou un technicien de radiotélévision expérimenté.

#### Canada:

L'émetteur/récepteur exempt de licence contenu dans le présent appareil est conforme aux CNR d'Innovation, Sciences et Développement économique Canada applicables aux appareils radio exempts de licence. L'exploitation est autorisée aux deux conditions suivantes :

1. L'appareil ne doit pas produire de brouillage;
2. L'appareil doit accepter tout brouillage radioélectrique subi, même si le brouillage est susceptible d'en compromettre le fonctionnement.

#### CAN ICES-3(B)/NMB-3(B)

#### Déclaration d'IC sur l'exposition aux radiations:

Cet équipement est conforme aux limites d'exposition aux radiations définies par le Canada pour des environnements non contrôlés.

Cet émetteur ne doit pas être installé au même endroit ni utilisé avec une autre antenne ou un autre émetteur.

BC

# 8 Trademarks

---

## Bluetooth

The Bluetooth® word mark and logos are registered trademarks owned by Bluetooth SIG, Inc. and any use of such marks by MMD Hong Kong Holding Limited is under license. Other trademarks and trade names are those of their respective owners.

---

## Siri

Siri is a trademark of Apple Inc., registered in the U.S. and other countries.

---

## Google

Google and Google Play are trademarks of Google LLC.

## 9 Frequently asked questions

### **My Bluetooth earpieces do not turn on.**

The battery level is low. Charge the earpieces.

### **I cannot pair my Bluetooth earpieces with my Bluetooth device.**

Bluetooth is disabled. Turn on your device and enable the Bluetooth feature before you turn on the earpieces.

### **Pairing does not work.**

- Put both earpieces into charging box.
- Make sure you have disabled the Bluetooth function of any previously connected Bluetooth devices.
- On your Bluetooth device, delete "Porsche Design PDT40" from the Bluetooth list.
- Pair your earpieces (see 'Pair the earpieces with your Bluetooth device for the first time' on page 6).

### **The Bluetooth device cannot find the earpieces.**

- The earpieces may be connected to a previously paired device. Turn off the connected device or move it out of range.
- Pairing may have been reset or the earpieces have been previously paired with another device. Pair the earpieces with the Bluetooth device again as described in the user manual (see 'Pair the earpieces with your Bluetooth device for the first time' on page 6).

### **My Bluetooth earpieces are connected to a Bluetooth stereo-enabled mobile phone, but music only plays on the mobile phone speaker.**

Refer to the user manual of your mobile phone. Select to listen to music through the earpieces.

### **The audio quality is poor and a crackling noise can be heard.**

- The Bluetooth device is out of range. Reduce the distance between your earpieces and Bluetooth device, or remove obstacles between them.
- Charge your earpieces.

### **The audio quality is poor when streaming from a mobile phone, is very slow or streaming does not work at all.**

Make sure your mobile phone not only supports (mono) HSP/HFP but also supports A2DP and is BT4.0x (or higher) compatible (see 'Technical data' on page 10).



