

STAR: Physical Interfaces

The following figure illustrates the STAR's physical interfaces.

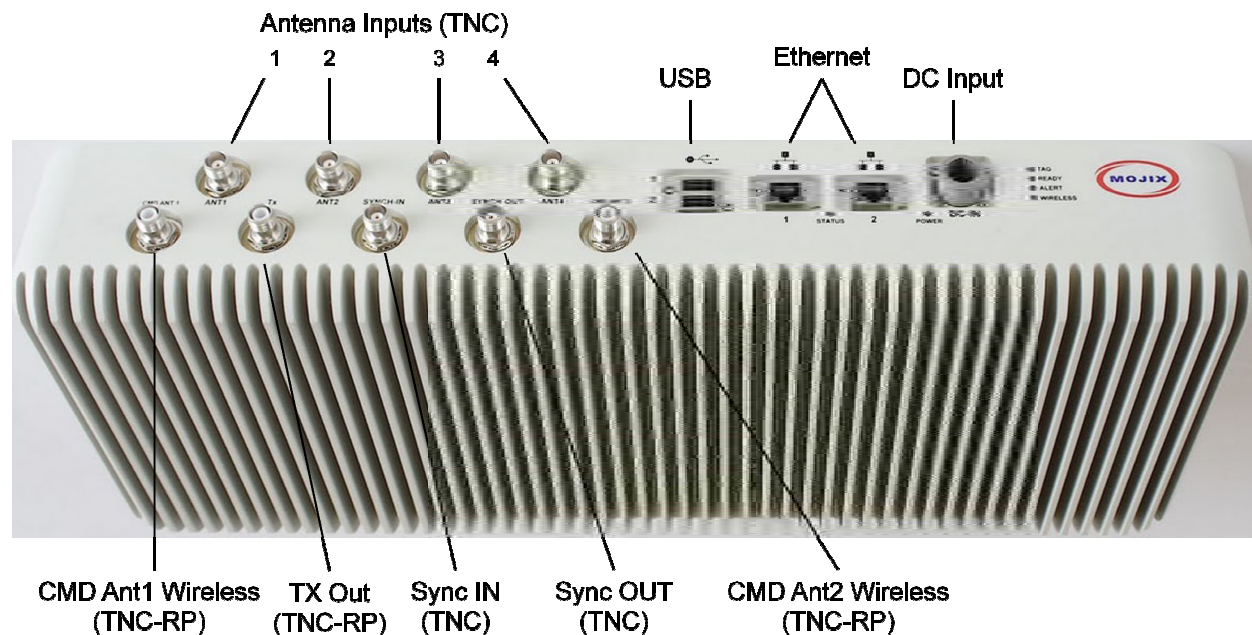


Figure 1: STAR Physical Interfaces

1. 1 TX Output TNC: Transmit RF Signal, 24 Volts DC, Forward Command Signal
2. 2 TX Output TNC for Wireless eNode Network: Up to two wireless forward command antenna(s)
3. 4 RX Input TNC from Antenna(s): Inputs from receive antenna array OR individual receive antenna(s)
4. 1 RX Input TNC Sync: Input synchronization signal from master STAR (for multiple simultaneous receiving)
5. 1 TX Output TNC Sync: Output synchronization signal to another STAR
6. 2 Ethernet Interfaces: Control from MCON, Status Monitoring and Tag Read Packets
7. 2 USB Interfaces (future use)
8. 1 DC Power Connector

Cabled System Topology

Error! Reference source not found. illustrates the components of the STAR system topology. These items are as follows: