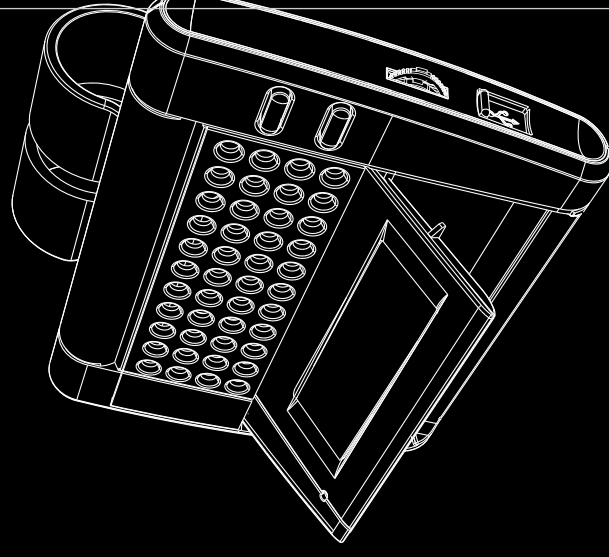


 **Bluetooth®**  
Speakerphone  
User Manual

Wide View & Safe Driving  
**MK10**



**MOVON**  
[www.movon.co.kr](http://www.movon.co.kr)

©2006 MOVON Corporation. All rights reserved.  
MOVON and MOVON logo are registered trademarks of  
MOVON Corporation and our Bluetooth products,  
Bluetooth is a trademark owned by Bluetooth SIG, INC.  
and is used by MOVON Corporation under license.

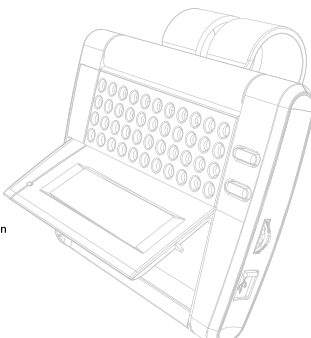
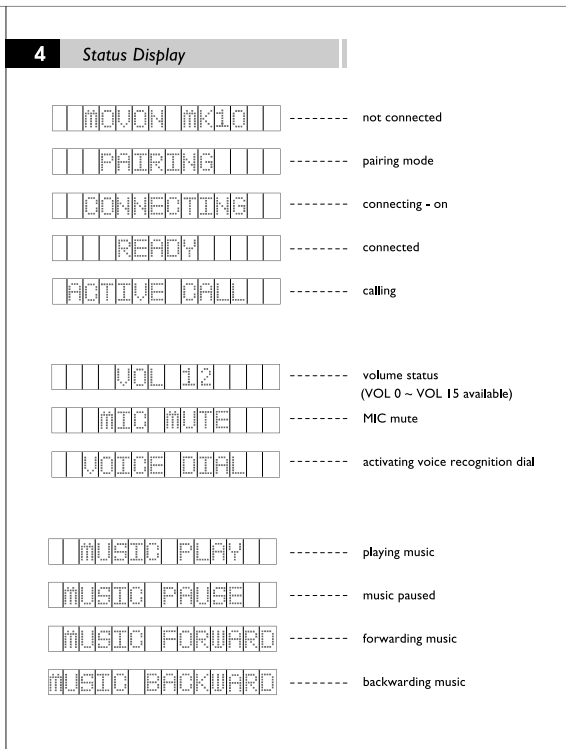
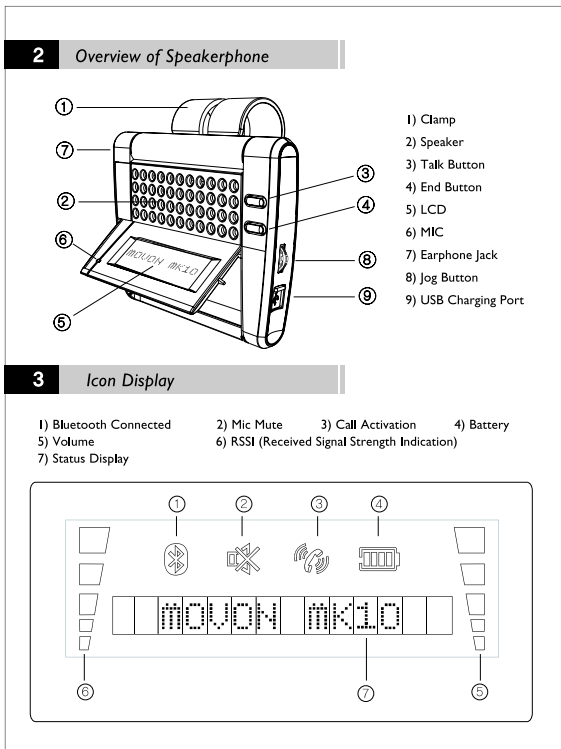
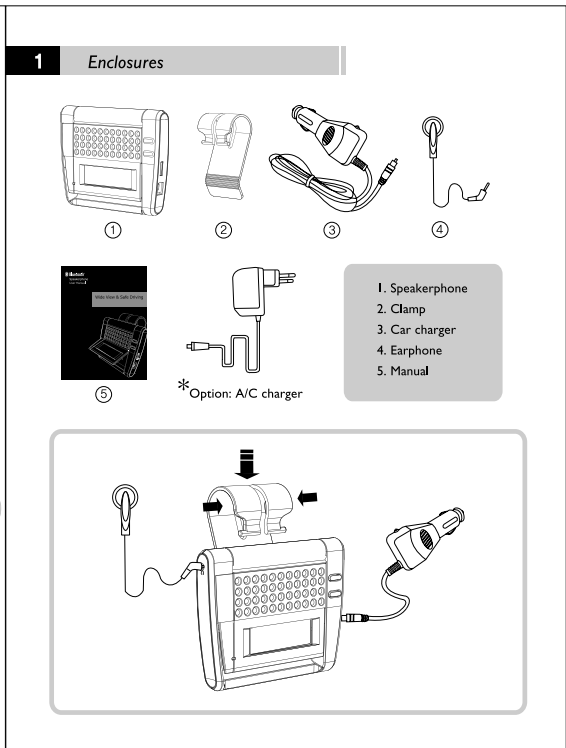


\* Specifications and features are subject to change without notice.

06-03-mv-mk10

**\* Contents**

1. Enclosures
2. Overview of Speakerphone
3. Icon Display
4. Status Display
5. Handsfree Mode
  1. Turning on/off
  2. Pairing
  3. Making a call
  4. Receiving a call
  5. Rejecting / Ending a call
  6. Transferring a call
  7. Adjusting a volume
  8. Muting the microphone
6. Menu Mode
  1. Entering the menu mode
  2. Ending the menu mode
  3. Menu mode scrolling
  4. Selecting a menu
  5. Storing a menu
  6. Using the menu mode
    - ① Ring Tone
    - ② Phone Book
7. Music Mode
  1. Music Play / Pause
  2. Music Stop
  3. Music Forward
  4. Music Backward
8. Safety and General Information
9. FCC STATEMENT
10. EU
11. Warranty
12. WEEE Symbol Information

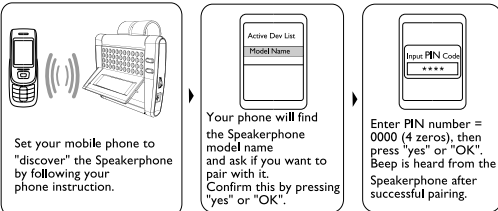
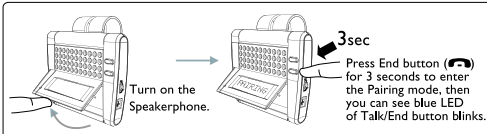
## 5 Handsfree Mode

### 1. Turning On/Off



\* Power saving: LCD backlight is automatically off after 60 seconds. Press any button for lighting on.

### 2. Pairing



\* Pairing mode: Pairing mode remains for 30 seconds.

### \* Auto Connection

Speakerphone functions Auto Connection that makes it possible to be automatically connected to the last paired phone after turned on.

### 3. Making a call

- 1) Last Number dial**  
Press Talk button ( ) one time after connected with a mobile phone. Phone number is displayed on the phone. Make a call by pressing Talk button ( ) one time.
- 2) Number Dial**  
5 last incoming call numbers are displayed on LCD by moving up JOG button ( ). A desired number can be selected by moving JOG button ( ) up and down. Or, if you move down JOG button ( ), numbers in Phone Book are displayed. Press Talk button ( ) one time for making a call.
- 3) Voice Recognition Dial**  
Press Talk button ( ) for 3 seconds until a short beep is heard. Speak the name of person to call. To cancel Voice Recognition Dial, press Talk button ( ) for 3 seconds again.

[Note] Make sure that voice recognition function on your mobile phone is activated and your voice tags have been recorded in the phone. Refer to your phone manual.

### 4. Receiving a call

Speakerphone rings when a call is coming in and the caller ID(number or name) is displayed on LCD. Press Talk button ( ) to answer a call.  
\* Caller ID: A caller's name will appear on LCD if the caller's number is stored in the speakerphone under the name.

### 5. Rejecting / Ending a call

- 1) Rejecting a call**  
When Speakerphone rings, press End button ( ) one time to reject a call.
- 2) Ending a call**  
Press End button ( ) one time to end an active call during a call.

### 6. Transferring a call

During an active call, press Talk button ( ) one time to transfer a call from Speakerphone to a mobile phone or from a mobile phone to Speakerphone.

### 7. Adjusting a volume

Move JOG button ( ) up and down during a call to adjust the volume level.

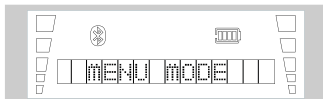
### 8. Muting the microphone

If you press JOG button ( ) one time during an active call, the other party can not hear you. To end the mute function, press JOG button ( ) one time again.

## 6 Menu Mode

### 1. Entering the menu mode

Press JOG button ( ) for 3 seconds until LCD display appears like this.



### 2. Ending the menu mode

To end the menu mode, press End button ( ) one time.

### 3. Menu mode scrolling

Search a desired menu by moving JOG button ( ) up and down.

### 4. Selecting a menu

Select a desired menu by pressing JOG button ( ) one time.

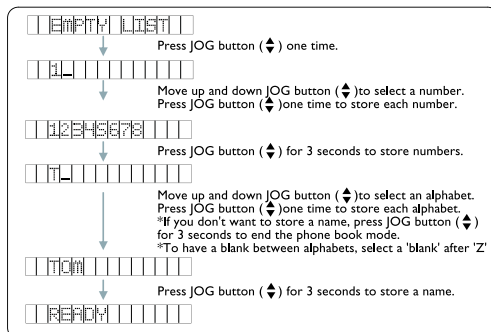
### 5. Storing a menu

Present menu is stored when you press JOG button ( ) for 3 seconds and release.

### 6. Using the menu mode

Menu mode consists of Ring Tone and Phone Book.

- 1) Ring Tone**  
Press JOG button ( ) for 3 seconds to enter the menu mode.  
Move JOG button ( ) up and down to search the ring tone menu.  
Press JOG button ( ) one time to enter the ring tone menu.  
Move JOG button ( ) up and down to find a desired ring tone from 0 to 2.  
Press JOG button ( ) for 3 seconds to store a selected ring tone, then the menu mode shall be ended.
- 2) Phone Book**  
Press JOG button ( ) for 3 seconds to enter the menu mode.  
Move JOG button ( ) up and down to search the phone book menu.  
Press JOG button ( ) one time to enter the phone book menu.



Press JOG button ( ) one time to change a stored number and name.  
(Follow above instruction to store a new number and name.)  
To end the menu mode during phone book function, press End button ( ).

\* Phone Book: Speakerphone stores up to 5 phone numbers and names in the phone book.  
\* Menu Mode: menu mode can be activated even before pairing.

## 7 Music Mode (A/V Profile Connected)

### 1. Music Play/Pause

Press JOG button (↕) one time, then music is playing.  
To pause the playing music, press JOG button (↕) one time. To release the pause, press JOG button (↕) one time again.

### 2. Music Stop

Press End button (⏹) to end music.

### 3. Music Forward

Move JOG button (↕) up for 2 seconds and release it to move on to the next music while music is playing or paused.

### 4. Music Backward

Move JOG button (↕) down for 2 seconds and release it to move back to the previous music while music is playing or paused.

[Note] Music Mode is activating only with A/V profile of a phone connected to Speakerphone.

## 8 Safety and General Information

1. Please read this guidebook carefully and follow the instruction
2. To avoid any damage or malfunction of the unit do not drop unit from high places
3. Keep away unit from humidity, water and any other liquid. And if the unit is exposed by water, moisture and other liquid directly then don't operate it normally to avoid any electrical shock, explosion and damage of the unit.
4. Do not place or keep the unit near the heat sources such as direct sun light, radiators, stoves or other apparatus which produce heat. It may cause explosion, degrade of performance and reduce battery life.
5. Do not modify, repair & disassemble unit at discretion (Especially battery: It may cause an explosion)
6. Do not place the heavy objects on the unit.
7. Use only supplied and approved charger.
8. Replacement or service must be done at a qualified service center or returned to the manufacturer.
9. Unplug this unit when unused for long periods of time or during lightning storms.

## ⚠ CAUTIONS: ELECTRIC SHOCK HAZARD

The battery used in this device may present a risk of fire or chemical burn if mis-treated.

## 9 FCC STATEMENT

This device complies with part 15 of the FCC Rules. Operation is subject to the following two conditions: (1) This device may not cause harmful interference, and (2) this device must accept any interference received, including interference that may cause undesired operation.

Note: The manufacturer is not responsible for ANY interference, for example RADIO or TV interference, caused by unauthorized modifications to this equipment. Such modifications could void the user's authority to operate the equipment.

## 10 EU

This product is CE marked according to the provision of the R&TTE Directive (99/5/EC). Here by MOVON Corporation, declares that this product is in compliance with the essential requirements and other relevant provisions of Directive 1999/5/EC. For further information please visit [www.movon.co.kr](http://www.movon.co.kr)

You can find the DoC from following website: [www.movon.co.kr/certificate/rtte](http://www.movon.co.kr/certificate/rtte)

Please note that this product uses radio frequency bands not harmonized within EU. Within the EU this product is intended to be used in Austria, Belgium, Denmark, Finland, France, Germany, Greece, Ireland, Italy, Luxembourg, The Netherlands, Portugal, Spain, Sweden, United Kingdom and within EFTA in Iceland, Norway and Switzerland.

Bluetooth is a trademark owned by the Bluetooth SIG, Inc.

## 11 Warranty

The condition of this warranty and our responsibilities under this warranty are as follows:

Supplier's warranty is non-transferable. And this warranty is limited to the original purchaser only.

" You must be able to prove the date of original purchase of the unit with a dated receipt.

" The warranty is not applicable if the product has been subject to physical abuse, improper installation, modification or repair by unauthorized third party.

" The responsibility of supplier's products shall be limited to the repair or replacement of the product at it's sole discretion.

" Specifically exempt from any warranty are limited-life consumable components subject to normal wear and tear such as batteries, decorates and other accessories.

" A supplier will not take any responsibility if the failure of the unit has resulted from accident, abuse, misuse, or any unauthorized repair, modification or disassemble.

" Modification and repair of the unit should be done by authorized and qualified service personnel. Center or returned to the manufacturer

" This warranty gives you specific legal rights, and you may also have other rights which vary under local laws.

## 12 WEEE Symbol Information



Correct Disposal of This Product  
(Waste Electrical & Electronic Equipment)

( Applicable in the European Union and other European countries with separate collection systems )

This marking shown on the product or its literature, indicates that it should not be disposed with other household wastes at the end of its working life.

To prevent possible harm to the environment or human health from uncontrolled waste disposal, please separate this from other types of wastes and recycle it responsibly to promote the sustainable reuse of material resources.

Household users should contact either the retailer where they purchased this product or their local government office, for details of where and how they can take this item for environmentally safe recycling.

Business users should contact their supplier and check the terms and conditions of the purchase contract. This product should not be mixed with other commercial wastes for disposal.