



**MOVON**

www.movon.co.kr



**Bluetooth®**

Wireless Hands-free Car Kit

User Manual

**MK30**

**Bluetooth®**

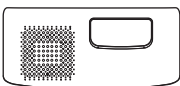
MOVON Corp, Korea. All rights reserved.  
MOVON and MOVON logo are registered trademarks of  
MOVON Corporation and our Bluetooth products.  
Bluetooth is a trademark owned by Bluetooth SIG, INC,  
and is used by MOVON Corp, Korea under license.

Designed by MOVON Korea

**MOVON**

English

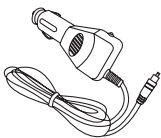
**1 ENCLOSURES**



① Speakerphone unit



② Clamp

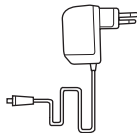


③ Car charger

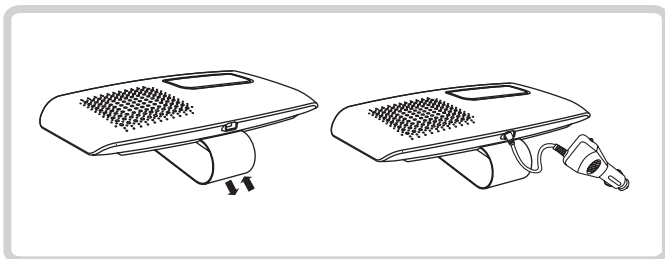


④ Manual

Optional items



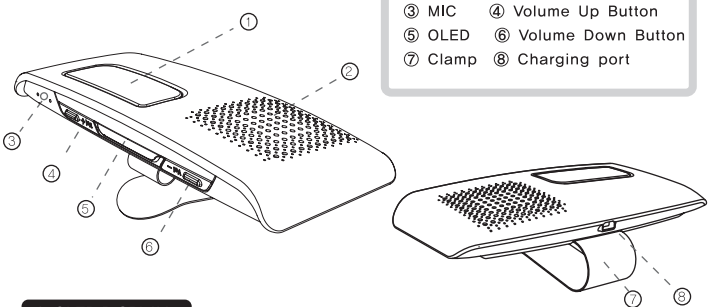
AC / DC adapter



English

**2 Product Components Hands-Free Unit**

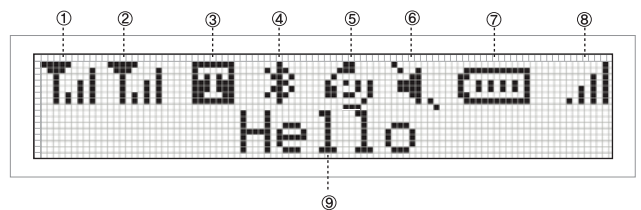
**1. Unit Components**



- ① Multi-Function Button
- ② Speaker
- ③ MIC
- ④ Volume Up Button
- ⑤ OLED
- ⑥ Volume Down Button
- ⑦ Clamp
- ⑧ Charging port

**2. OLED DISPLAY**

- ① RSSI1 (Received Signal Strength Indication)
- ② RSSI2 (Received Signal Strength Indication)
- ③ TTS(Text to Speech)
- ④ Bluetooth Connection
- ⑤ Call Activation
- ⑥ MIC Mute
- ⑦ Battery
- ⑧ Volume
- ⑨ Status display



### 3 CHARGING

Connect the unit to the adapter or cigar-jack to charge the batteries prior to use. When charging is completed, "Charger Complete" is displayed on OLED.

#### 1. Charging via Adapter

When connected to the adapter, "Battery Charging" is displayed on OLED.

#### 2. Charging via Cigar-Jack

When connected to the cigar-jack, "Battery Charging" is displayed on OLED.

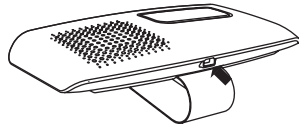
#### 3. Low Battery Warning

When the batteries require charging, the unit displays "Low Battery" signal on OLED and beeps every 20 seconds. The unit will power off unless charged within approximately 30 minutes.

#### 4. Operating & Charging Durations

**Charging:** Approx. 3 hours

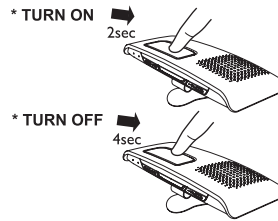
**Operation:** Stand-by Mode - Approx 300 hours.  
Call Mode - Approx. 15 hours.



3

### 4 HOW TO USE

#### 1. TURNING ON/OFF



**TURN ON:** down the Multi-Function button for 2 seconds until "Hello" displays on OLED (A melody signals the operation start)

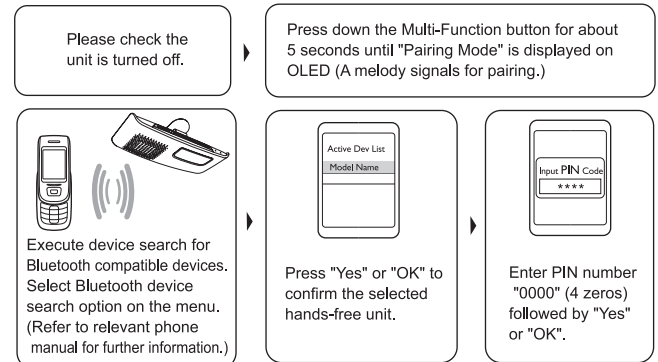
**TURN OFF:** Press down the Multi-Function button for 4 seconds until "Goodbye" displays on OLED (A melody signals the operation end)

#### \*TO SAVE BATTERY LIFE

The unit turns off the OLED display automatically after 10 minutes if there is no activity. OLED turns on if it detects any activities or button input.

#### 2. PAIRING

The unit needs to be paired with Bluetooth-compatible mobile phones or other devices for use.



4

\* **AUTOMATIC CONNECTION:** This unit supports Auto-Connection that makes it possible to be automatically connected to the last connected device after turning on.

\* **SIMPLE PAIRING (ONLY COMPATIBLE WITH BLUETOOTH CORE SPEC 2.1):** Follow Steps 1 to 4 as specified above to pair devices. (Step 5 may be skipped.)

\* **EASY PAIRING:** The unit goes into the Pairing Mode automatically when it is turned on for the first time.

#### 3. MAKING A CALL

##### 1. Redialing last call

Press the Multi-Function button.  
The mobile phone dials the last call made after connection.  
The mobile phone dials the last call made before and after connection.

##### 2. Voice Dialing

Press the Multi-Function button for about 2 seconds until you hear a long beep sound. Voice Dialing is activated on the phone.  
Voice dialing is enabled for the last call made before connection.  
If you want to cancel Voice Dialing, press the Multi-Function button during the Voice Dial Mode.

[Note] Please make sure that the phone supports the Voice Recognition and save Voice Tag.

##### 3. Making a call using Call Logs

Press the Multi-Function button after you select the number you want to call from the Call Logs. (Please refer to Item 11.)

##### 4. Returning a missed call

Press the Multi-Function button to dial missing calls. (Please refer to Item 12.)

#### 4. RECEIVING A CALL

You can hear the melody and the Caller ID from the unit for an incoming call. Also, you can check the Caller ID through the OLED. Press the Multi-Function button to receive calls.  
\* Caller ID: Caller's number.

\* TTS (Text to Speech): A TTS system allows the phone to speak caller ID. It can be activated or deactivated by pressing Volume Up or Down button as indicated on the OLED.

5

#### 5. REJECTING A CALL

Incoming calls can be identified through the types of ring tones and caller ID on display or spoken via TTS. Press the Multi-Function button for 2 seconds to reject incoming calls.

#### 6. ENDING A CALL

Press the Multi-Function button during the call or just press the "Ending" button to end a call.

#### 7. TRANSFERRING A CALL

##### 1. From Hands-Free Unit to Mobile Phone

To transfer a call, press the Multi-Function button on the Hands-Free Unit during the call for 2 seconds until the unit beeps.

##### 2. From Mobile Phone to Hands-Free Unit

To transfer a call, press the Multi-Function button on the Mobile Phone during the call for 2 seconds until the unit beeps.

#### 8. ADJUSTING VOLUME

You can adjust the Volume by pressing the Volume Up (+) or Down (-) button during the call or for incoming calls.

#### 9. MUTING THE MICROPHONE

If you press the Volume Down (-) button for about 2 seconds until a long beep sound is heard, the microphone is muted. A melody signals every 10 seconds with an indication on OLED during the mute mode.

[Note] The Mute mode is deactivated if you press Volume Up (+) or Down (-) button

#### 10. CALL WAITING

Before using 3-way calling through the Hands-Free Unit, check if the phone supports Hands-Free function. Further, be aware that "Call Hold" and "Multiparty" functions are available only through your phone service provider.

##### 1. Connecting to the call on wait/ Ending the current call

Press the Volume Down (-) button for about 4 seconds until you hear a long beep sound twice.

6

**2. Connecting to a call on wait / Switch the current call to waiting mode.**

Press the Volume Up (+) button for about 4 seconds until you hear a long beep sound twice.

**[Recommended]** Press the "SEND" button of your mobile phone to activate the Call Waiting function.

**11. CALL LOGS**

The unit stores up to 5 incoming calls. Up to 5 calls are stored when calling from the Call Logs. In Stand-by mode, if you press the Volume Up (+) button, "Outgoing" is displayed on OLED. In Stand-by mode, if you press the Volume Down (-) button, "Incoming" is displayed on OLED. Search phone numbers using the Volume Up and Down button, and Press the Multi-Function button to dial.

If there is no activity for 5 seconds after switching to the Call Logs, it automatically switches back.

**12. MISSING CALL**

If there is a missing call, "Missing Call" with its Caller ID is displayed on the OLED. Press the Multi-Function button to dial the number.

**[Note]** While the Multi-Point mode is activated, no missing call is displayed.

**13. Multi-Point Function**

The Hands-Free Unit supports simultaneous connection with 2 mobile phones with full control of each unit.

**[Note]** This feature may not be compatible with certain mobile phones.

**1. Multi-Point**

Set the device into the pairing-mode first, and search the unit individually from 2 mobile phones. Make sure one mobile phone is connected properly to the unit before trying the other one. You can check the status of connection with the mobile phones through RSSI1/RSSI2 on the OLED.

**2. Making a phone call**

Press the Volume Down (-) button for about 2 seconds until a long beep sound is heard to make an outgoing call from the second mobile phone. Press the Volume Up (+) button for about 2 seconds until a long beep sound is heard to activate Voice Dial mode of the second mobile phone.

To use the 1st mobile phone, please refer to the following:

**3. Receiving a call**

Press the Multi-Function button to receive incoming calls.

**[Note]** Each mobile phone plays different ring tones. A mobile phone without a call in progress is disconnected automatically, if the other phone is connected to a call. Connection resumes after the call ends.

**14. LOW BATTERY WARNING FOR MOBILE PHONE**

The unit displays "Need AG Charging" through the OLED when the batteries are low and require charging.

**[Note]** The mobile phone needs to support Hands-Free Profile 1.5 to use this feature.

**15. OLED INVERSION**

The Hands-Free Unit may be reversed if necessary. To reverse the OLED display, press both Volume Up and Down buttons for 2 seconds until there is a long beep.

**[Note]** The mobile phone needs to support Hands-Free Profile 1.5 to use this feature.

**16. RESET THE HANDSFREE**

To reset the unit, press the both Multi-function and Volume Down (-) button for about 4 seconds until "Reset" is displayed on the OLED. All device information and call logs will be deleted.

**5 Specifications**

Model Name	MK30
Bluetooth Core Spec	Bluetooth Specification 2.1+EDR
Profile	Headset Profile, Handsfree Profile 1.5
Carrier Frequency	2400 MHz to 2483.5 MHz
Audio Output	1W (8Ω)
LCD	OLED 21.1*3.5 (0.8 inch)
LCD Backlight	Blue
Modulation Method	GFSK, 1Mbps, 0.5BT Gaussian
Maximum Data Rate	Asynchronous: 723.2 kbps / 57.6 kbps Synchronous: 433.9 kbps / 433.9 kbps
Bluetooth Class	Class 2
Hopping	1600 hops/sec, 1MHz Channel Space
Transmit Power	0 dBm
Coverage Range	10 Meters
Receiver Sensitivity	-80 dBm / 0.1 % BER
Continuous Talk Time	Max. 15 Hours
Standby Time	300 Hours
Weight	76 g
Dimension	128 x 60 x 18 mm
Charging Voltage	DC 5.0 V
Charging Time	3 Hours
Operating Temperature	-20° to + 70°C
Storage Temperature	-40° to + 90°C
Battery	Lithium Polymer 3.7V 1100mAh

**6 Safety and General Information**

1. Please read this guidebook carefully and follow the instruction
2. To avoid any damage or malfunction of the unit do not drop unit from high places
3. Keep away unit from humidity, water and any other liquid. And if the unit is exposed by water, moisture and other liquid directly then don't operate it normally to avoid any electrical shock, explosion and damage of the unit.
4. Do not place or keep the unit near the heat sources such as direct sun light, radiators, stoves or other apparatus which produce heat. It may cause explosion, degrade of performance and reduce battery life.
5. Do not modify, repair & disassemble unit at discretion (Especially battery: It may cause an explosion)
6. Do not place the heavy objects on the unit.
7. Use only supplied and approved charger.
8. Replacement or service must be done at a qualified service center or returned to the manufacturer.
9. Unplug this unit when unused for long periods of time or during lightening storms.

**⚠ CAUTIONS: ELECTRIC SHOCK HAZARD**

The battery used in this device may present a risk of fire or chemical burn if mis-treated.

**7 FCC STATEMENT**

This device complies with part 15 of the FCC Rules. Operation is subject to the following two conditions: (1) This device may not cause harmful interference, and (2) this device must accept any interference received, including interference that may cause undesired operation.

**[Note]** The manufacturer is not responsible for ANY interference, for example RADIO or TV interference, caused by unauthorized modifications to this equipment. Such modifications could void the user's authority to operate the equipment.

**8** EU

This product is CE marked according to the provision of the R&TTE Directive (99/5/EC). Here by MOVON Corporation, declares that this product is in compliance with the essential requirements and other relevant provisions of Directive 1999/5/EC. For further information please visit [www.movon.co.kr](http://www.movon.co.kr)

You can find the DoC from following website: [www.movon.co.kr/certificate/rtte](http://www.movon.co.kr/certificate/rtte)

Please note that this product uses radio frequency bands not harmonized within EU. Within the EU this product is intended to be used in Austria, Belgium, Denmark, Finland, France, Germany, Greece, Ireland, Italy, Luxembourg, The Netherlands, Portugal, Spain, Sweden, United Kingdom and within EFTA in Iceland, Norway and Switzerland. Bluetooth is a trademark owned by the Bluetooth SIG, Inc.

**9** Warranty

The condition of this warranty and our responsibilities under this warranty are as follows:  
Supplier's warranty is non-transferable. And this warranty is limited to the original purchaser only.

" You must be able to prove the date of original purchase of the unit with a dated receipt.

" The warranty is not applicable if the product has been subject to physical abuse, improper installation, modification or repair by unauthorized third party.

" The responsibility of supplier's products shall be limited to the repair or replacement of the product at it's sole discretion.

" Specifically exempt from any warranty are limited-life consumable components subject to normal wear and tear such as batteries, decorates and other accessories.

" A supplier will not take any responsibility if the failure of the unit has resulted from accident, abuse, misuse, or any unauthorized repair, modification or disassemble.

" Modification and repair of the unit should be done by authorized and qualified service personnel, Center or returned to the manufacturer

" This warranty gives you specific legal rights, and you may also have other rights which vary under local laws.

**10** WEEE Symbol Information

**Correct Disposal of This Product**  
(Waste Electrical & Electronic Equipment)

( Applicable in the European Union and other European countries with separate collection systems )

This marking shown on the product or its literature, indicates that it should not be disposed with other household wastes at the end of its working life.

To prevent possible harm to the environment or human health from uncontrolled waste disposal, please separate this from other types of wastes and recycle it responsibly to promote the sustainable reuse of material resources.

Household users should contact either the retailer where they purchased this product or their local government office, for details of where and how they can take this item for environmentally safe recycling.

Business users should contact their supplier and check the terms and conditions of the purchase contract. This product should not be mixed with other commercial wastes for disposal.

**IMPORTANT NOTE:** To comply with RF exposure requirements, this device may not be co-located with any other transmitter or antenna.