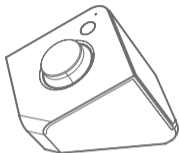


# ONLYX

Wireless stereophonic sound speaker



## What's in the box?



ONYX



AC adapter



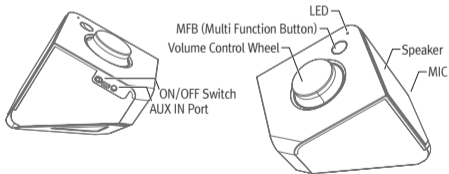
3.5mm stereo cable



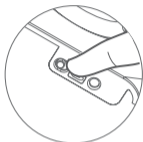
User manual

※ Please, use provided adapter only.

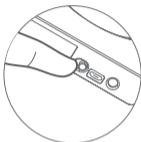
## Getting to know the ONYX



### TURING ON/OFF



Turning ON



Turning OFF

### CHARGE THE BATTERY

Before using speaker, charge the battery completely.

To charge the battery, connect the power supply to the speaker and plug it into a live AC outlet. The Red LED remains on while the speaker is charging and Red LED will be off when charging is completed.

## CHECKING THE BATTERY LEVEL

The battery status indicator will be shown on iPhone or iPad

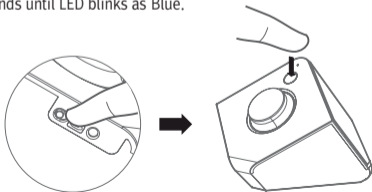


## LOW BATTERY ALARM

- When battery is low, speaker will alarm with beep every 1 minute.
- Once you hear beep alert, please charge immediately.

## TO BEGIN PAIRING WITH A BLUETOOTH DEVICES

1. Turn the ONYX on. When turned on for the first time, ONYX will go to pairing mode automatically.  
Or Press the MFB button for 3 seconds until LED blinks as Blue.



2. Set your Mobile phone or Bluetooth device to Bluetooth discoverable mode. (Visibility on)
3. Set your Mobile phone or Bluetooth device to discover the ONYX, then locate the Bluetooth device list.
4. From the Bluetooth device list, select the device named "ONYX"
5. If your device asks for a passkey, enter digits 0000 (four zeros) and press OK.
6. Your Bluetooth device indicates when pairing is completed.

The ONYX speaker announces as "Connected" when pairing is completed and Blue LED remains.

※ Auto Reconnection

ONYX will try to re-connect to the latest connected Bluetooth device when you turn on ONYX.

※ Simple Pairing

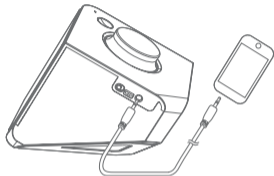
If your device supports Bluetooth v2.1 or higher version, you don't need to passkey to pair.

※ Easy Pairing

The ONYX goes into pairing mode automatically for the first time you use it.

## TO ADD ANOTHER SOURCE

- You can use another audio device with ONYX. This requires using an 3.5mm stereo cable with a 3.5mm plug on one end to connect with the AUX port on ONYX.



## PLAYING MUSIC

- Play / Pause Music: Press the MFB button shortly

## MAKING A CALL

- Last call redialing: Press MFB button twice.
- Voice dialing : To activate or deactivate voice dialing, press the MFB button for 1 second.

**[NOTE]** Make sure your mobile phone is supported voice dialing function (Check your mobile phone instruction manual)

## ANSWER / END A CALL

Press the MFB button.

## DECLINE AN INCOMING CALL

Press the MFB button for 1 second.

## Transfer a call from ONYX to Mobile phone (or Mobile phone to ONYX)

Press the MFB button for 1 second.

## VOLUME CONTROLS

Increase and Decrease the volume using volume control wheel.

There will be beep sound on minimum and maximum volume level.

## MUTING

Mute or Unmute the built-in microphone by holding MFB button for 3 seconds.

## RESET THE ONYX

Press MFB button for 3 seconds on pairing mode stage.

## Status

Status	LED Lighting	Beep / Voice announcement
Power On	LED flashes in Blue 3 times	Power ON
Pairing mode	LED flashes in Blue rapidly	
Disconnected mode	LED flashes in Blue every 5 seconds	Disconnected
Connected mode	LED flashed in Blue 2 times every 5 seconds	Connected
Making a call	LED flashed in Blue 3 times every 5 seconds	
Incoming call	LED flashes in Blue 2 times every 2 seconds	Ring
Playing a music	LED flashes in Blue 3 times every 5 seconds	
Mute		Beep in every 10 seconds
Reset	LED flashes in Blue 5 times	Beep
Low battery		
Charging	Steadily RED LED on	
Charging complete	Red LED is turned off	



## Specification

Model Name	ONYX
Bluetooth Core Spec	Bluetooth Specification 3.0
Profile	HSP/HFP1.6(Wide Band Speech), A2DP, AVRCP
Bluetooth Class	Class 2
Coverage Range	10 Meters
Continuous Play Time	approx. 10 Hours
Standby Time	approx. 500 Hours
Weight	1100g
Charging Voltage	DC 5.0 V
Charging Time	approx. 3 Hours
Operating Temperature	-10° to +50° C
Storage Temperature	-20° to +70° C
Output Power	6 W (2 CH, 3 W x 2)
Battery	Lithium Polymer 3.7V 1500mAh

## ***SAFETY AND GENERAL INFORMATION***

1. Please read this guidebook carefully and follow the instruction.
2. To avoid any damage or malfunction of the unit, do not drop it from high place.
3. Keep away unit from humidity, water and any other liquid. And if the unit is exposed by water, moisture and other liquid directly, then do not operate it normally to avoid any electrical shock, explosion and damage of the unit.
4. Do not place or keep the unit near the heat sources such as direct sun light, radiators, stoves or other apparatus which produce heat.  
It may cause explosion, degrade of performance and reduce battery life.
5. Do not modify, repair & disassemble unit at discretion (especially battery: it may cause an explosion).
6. Do not place the heavy objects on the unit.
7. Use only supplied and approved charger.
8. Replacement or service must be done at a qualified service center or manufacturer.
9. Unplug this unit when unused for long period of time or during lightening storms.

### **[CAUTIONS] ELECTRIC SHOCK HAZARD**

The battery used in this device may present a risk of fire or chemical burn if mis-treated.

## ***FCC WARNING***

This equipment may generate or use radio frequency energy. Changes or modifications to this equipment may cause harmful interference unless the modifications are expressly approved in the instruction manual.

The user could lose the authority to operate this equipment if an unauthorized change or modification is made.

**[NOTE]** This equipment has been tested and found to comply with the limits for a Class B digital device, pursuant to Part 15 of the FCC Rules.

These limits are designed to provide reasonable protection against harmful interference in a residential installation. This equipment generates, uses and can radiate radio frequency energy and, if not installed and used in accordance with the instructions, may cause harmful interference to radio communications. However, there is no guarantee that interference will not occur in a particular installation.

If this equipment does cause harmful interference by one or more of the following measures:

- Reorient or relocate the receiving antenna.
- Increase the separation between the equipment and receiver.
- Connect the equipment into an outlet on a circuit different from that to which the receiver is connected.
- Consult the dealer or an experienced radio/TV technician for help.\*

### ***FCC RF Radiation Exposure Statement***

1. This Transmitter must not be co-located or operating in conjunction with any other antenna or transmitter.
2. This equipment complies with FCC RF radiation exposure limits set forth for an uncontrolled environment. This equipment should be installed and operated with a minimum distance of 20 centimeters between the radiator and your body.

### ***EU***

This product is CE marked according to the provision of the R&TTE Directive (99/5/EC). **CE 1177**

Here by MOVON Corporation, declares that this product is in compliance with the essential requirements and other relevant provisions of Directive 1999/5/EC. Please note that this product uses radio frequency bands not harmonized within EU.

Within the EU this product is intended to be used in Austria, Belgium, Denmark, Finland, France, Germany, Greece, Ireland, Italy, Luxembourg, The Netherlands, Portugal, Spain, Sweden, United Kingdom and within EFTA in Iceland, Norway and Switzerland.

Bluetooth is a trademark owned by the Bluetooth SIG, Inc.

## **WARRANTY**

The condition of this warranty and our responsibilities under this warranty are as follows:

Supplier's warranty is non-transferable. And this warranty is limited to the original purchaser only.

- You must be able to prove the date of original purchase of the unit with a dated receipt.
- The warranty is not applicable if the product has been subject to physical abuse, improper installation, modification or repair by unauthorized third party.
- The responsibility of supplier's products shall be limited to the repair or replacement of the product at its sole discretion.
- Specifically exempt from any warranty are limited-life consumable components subject to normal wear and tear such as batteries, decorates and other accessories.
- A supplier will not take any responsibility if the failure of the unit has resulted from accident, abuse, misuse or any unauthorized repair, modification or disassemble.
- Modification and repair of the unit should be done by authorized and qualified service personnel, center or returned to the manufacturer.
- This warranty gives you specific legal rights and you may also have other rights which vary under local laws.

## **WEEE SYMBOL INFORMATION**



Correct Disposal of This Product  
(Waste Electrical & Electronic Equipment)

(Applicable in the European Union and other European countries with separate collection systems) This marking shown on the product or its literature, indicates that it should not be disposed with other household wastes at the end of its working life.

To prevent possible harm to the environment or human health from uncontrolled waste disposal, please separate this from other types of wastes and recycle it responsibly to promote the sustainable reuse of material resources.

Household users should contact either the retailer where they purchased this product or their local government office, for details of where

and how they can take this item for environmentally safe recycling.

Business users should contact their supplier and check the terms and conditions of the purchase contract. This product should not be mixed with other commercial wastes for disposal.

[IMPORTANT NOTE] To comply with RF exposure requirements, this device may not be co-located with any other transmitter or antenna.

### ***Troubleshooting***

Speaker will not turn on	Make sure ONYX is charged or connected to AC outlet
No audio from Bluetooth devices	Turn up the volume on your Bluetooth devices or Bluetooth devices. Make sure the ONYX is not muted. Your Bluetooth devices may be out of range. Make sure your Bluetooth devices is not connected to ONYX.
Hearing Distortion	Make sure ONYX is charged up. Make sure ONYX is not out of range.
Unable to connect	Make sure your devices is Bluetooth compatible. Make sure the Bluetooth capability on your device is turned on. Your Bluetooth devices may be out of range.