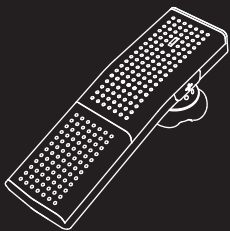


Bluetooth®
Wireless Headset
R2

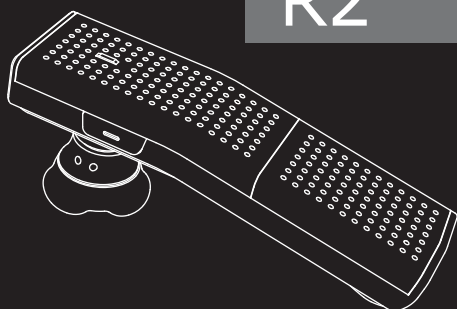


MOVON
www.movon.co.kr

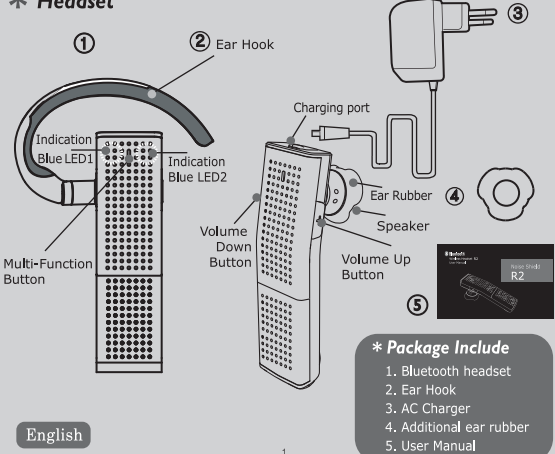
MOVON Corp, Korea All rights reserved.
MOVON and MOVON logo are registered trademarks of
MOVON Corporation and our Bluetooth products.
Bluetooth is a trademark owned by Bluetooth SIG, INC,
and is used by MOVON Corp, Korea under license.
Designed by MOVON Korea

Bluetooth®
Wireless Headset R2
User Manual

Noise Shield
R2



*** Headset**



*** Package Include**

1. Bluetooth headset
2. Ear Hook
3. AC Charger
4. Additional ear rubber
5. User Manual

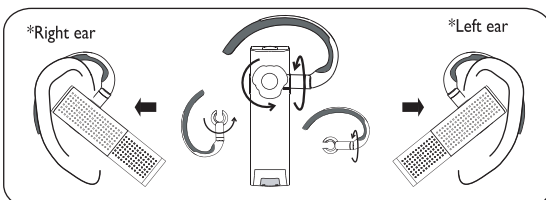
English

*** Charging a headset**

English

- 1. Charge by Adaptor**
Before you use headset, please charge it first. When charging start, both BlueLED will be turned on. And Both LED will be turned off when fully charged.
- 2. Low battery alarm**
When the battery is low, you can hear Low battery alarm every 20 sec for 30 Min.
- 3. Battery Check**
Press Volume Up & Down button shortly. Then you can hear battery status ("Battery Low", "Battery Normal", "Battery High").
- 4. Charging and Operation time**
Charging time : Appr. 2 Hours
Operation time: Standby time: Appr.120 hours/ Talk time: Appr. 4 hours.

*** Wearing Your Headset**



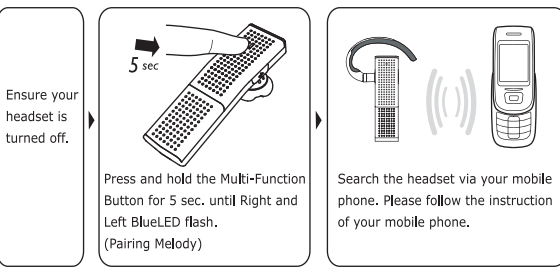
1 Power On/Off

English

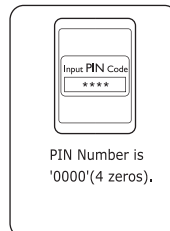
- Power ON :** Press and hold the Multi-Function Button for 2 sec. until both BlueLED flash then release it. (Turn on melody)
- Power Off :** Press and hold the Multi-Function Button for 4 sec. until both BlueLED flash then release it. (Turn off melody)

2 Pairing

Before you use headset, please pair your headset with mobile phone first.



When you find your headset, Please select it and confirm by "Yes" or "OK"



PIN Number is '0000'(4 zeros).

English

*** AUTO CONNECTION:**

When you turn on the headset, it will try to connect to the mobile phone which you paired at last.

*** SIMPLE PAIRING:**

If your mobile phone supports bluetooth core spec 2.1, then you don't need to put PIN number to pair. (This function is only available when your mobile phone supports bluetooth version 2.1)

*** EASY PAIRING :**

If you use headset for the first time, headset will go pairing mode directly.

3 Making a call

English

- 1. Last number dial**
- Press Multi-Function button shortly.
- Select number and press Multi-Function button shortly again.
(Some mobile directly call your last outgoing call number as you push Multi-Function button shortly)
- 2. Voice Dial**
- Press and hold Multi-Function button for 2 sec. until you hear long beep then release the button
- Once your mobile phone in voice dialing mode, please follow the step as your mobile phone instructed.
- You can de-activate voice dial mode by push Multi-Function button shortly in voice dialing mode.
(Note) Please check if your mobile phone supports voice dialing function.
Please record voice tag first before you use this function.
- 3. Favorite number dial**
: Please push volume up & down button simultaneously at once. Then, it will dial the number which is memorized in "number 1" in your phone book.

4 Answering a call

Press Multi-Function button shortly to receive call.

5 Reject an incoming call

Press and hold Multi-Function button for 2 sec until you hear long beep sound. Then release the button to reject an incoming call.

6 Ending a call

English

Press Multi-Function button shortly while you are on the line. You can also ending a call from your mobile by push "END" button.

7 Transferring a call

Headset to mobile phone: Press and hold Multi-Function button for 2 sec.
Mobile phone to headset: Press and hold Multi-Function button for 2 sec.



8 Volume control

Adjust speaker volume by pushing volume up or down button which is located on the right and left side of headset

9 Mic mute

Press and hold volume down button for 2 sec. then the MIC mute will be activated. You can hear the status indication melody every 10 sec. in MIC mute mode. You can de-activate the MIC mute mode by pushing volume up or down button at once.

10 Call waiting (3way calling)

English

Before you use 3way calling function, please make sure that your mobile phone supports "Handsfree profile". And please check with your network operator if they support Call hold & Multiparty call service.

1. Connect to incoming call & disconnect your current call.
: Press and hold volume down button for 4 sec. until you hear long beep sound twice. Then you can receive incoming call and the current call will be disconnected.
2. Put your current call in waiting mode and receive incoming call.
: Press and hold volume up button for 4 sec. until you hear long beep sound twice. You can put current call in waiting mode and receive incoming call.

[TIP] Call waiting mode by pushing "Send" button on your mobile

11 Missing call alert

When there is a missing call, you can hear beep sound every 10 sec. for 10 min.

12 Multipoint Function

English

The Headset Unit supports simultaneous connection with 2 mobile phones with full control of each unit
(Note) This feature may not be compatible with certain mobile phones.

1. Multi-Point Connect

- Set the device into the pairing-mode first, and search the unit individually from 2 mobile phones.
- Make sure one mobile phone is connected properly to the unit before trying the other one.
- You can check connection with the mobile phones through beep(short double high) and led flashing.

2. Making a phone call (To use the 2st mobile phone)

- Press the Volume Down(-) button for about 2 seconds until a long beep sound is heard to make an last number redial from the second mobile phone.
- Press the Volume Up(+) button for about 2 seconds until a long beep sound is heard to activate voice dial of the second mobile phone.

(Note) Making a phone call (To use the 1st mobile phone)
Follow the same instruction as section 3 described already

3. Receiving a call

- Press the Multi-Function button to receive incoming calls
- (Note) Each mobile phone plays different ring tones. A mobile phone without a call in progress is disconnected automatically, if the other phone is connected to a call. Connection resumes after the call ends.

13 Audio Caller ID

You can hear the melody and the Caller ID(Caller's number) from the headset for an incoming call.
It can be activated or deactivated by pushing and holding Volume Up & Down button for 2 sec.

14 RESET OF THE HEADSET

Press and hold Multi-Function button & Volume Down button for 4 sec. Then all device information and call list of your headset will be reset.

15 Safety and General Information

English

1. Please read this guidebook carefully and follow the instruction
2. To avoid any damage or malfunction of the unit do not drop unit from high places
3. Keep away unit from humidity, water and any other liquid. And if the unit is exposed by water, moisture and other liquid directly then don't operate it to avoid any electrical shock, explosion and damage of the unit.
4. Do not place or keep the unit near the heat sources such as direct sun light, radiators, stoves or other apparatus which produce heat. It may cause explosion, degrade of performance and reduce battery life.
5. Do not modify, repair & disassemble unit at discretion
(Especially battery: It may cause an explosion)
6. Do not place the heavy objects on the unit.
7. Use only supplied and approved charger.
8. Replacement or service must be done by qualified service center or manufacturer.
9. Unplug this unit when unused for long periods of time or during lightning storms.

CAUTIONS: ELECTRIC SHOCK HAZARD

The battery used in this device may present a risk of fire or chemical burn if mis-treated.

16 FCC & IC STATEMENT

English

"This device complies with Part 15 of the FCC Rules."
Operation is subject to the following two conditions:

- (1) This device may not cause harmful interference, and
- (2) this device must accept any interference received, including interference that may cause undesired operation.

Note: The manufacturer is not responsible for ANY interference, for example RADIO or TV interference, caused by unauthorized modifications to this equipment. Such modifications could void the user's authority to operate the equipment.

17 EU

This product is CE marked according to the provision of the R&TTE Directive (99/5/EC). Here by MOVON Corporation, declares that this product is in compliance with the essential requirements and other relevant provisions of Directive 1999/5/EC. For further information please visit www.movon.co.kr

You can find the DoC from following website: www.movon.co.kr/certificate/rtte

Please note that this product uses radio frequency bands not harmonized within EU. Within the EU this product is intended to be used in Austria, Belgium, Denmark, Finland, France, Germany, Greece, Ireland, Italy, Luxembourg, The Netherlands, Portugal, Spain, Sweden, United Kingdom and within EFTA in Iceland, Norway and Switzerland.

Bluetooth is a trademark owned by the Bluetooth SIG, Inc.

18 Warranty

English

The condition of this warranty and our responsibilities under this warranty are as follows:
Supplier's warranty is non-transferable. And this warranty is limited to the original purchaser only.

" You must be able to prove the date of original purchase of the unit with a dated receipt.

" The warranty is not applicable if the product has been subject to physical abuse, improper installation, modification or repair by unauthorized third party.

" The responsibility of supplier's products shall be limited to the repair or replacement of the product at it's sole discretion.

" Specifically exempt from any warranty are limited-life consumable components subject to normal wear and tear such as batteries, decorates and other accessories.

" A supplier will not take any responsibility if the failure of the unit has resulted from accident, abuse, misuse, or any unauthorized repair, modification or disassemble.

" Modification and repair of the unit should be done by authorized and qualified service personnel. Center or returned to the manufacturer.

" This warranty gives you specific legal rights, and you may also have other rights which vary under local laws.

19 WEEE Symbol Information

English



Correct Disposal of This Product
(Waste Electrical & Electronic Equipment)

(Applicable in the European Union and other European countries with separate collection systems)

This marking shown on the product or its literature, indicates that it should not be disposed with other household wastes at the end of its working life. To prevent possible harm to the environment or human health from uncontrolled waste disposal, please separate this from other types of wastes and recycle it responsibly to promote the sustainable reuse of material resources.

Household users should contact either the retailer where they purchased this product or their local government office, for details of where and how they can take this item for environmentally safe recycling.

Business users should contact their supplier and check the terms and conditions of the purchase contract. This product should not be mixed with other commercial wastes for disposal.

IMPORTANT NOTE: To comply with RF exposure requirements, this device may not be co-located with any other transmitter or antenna