



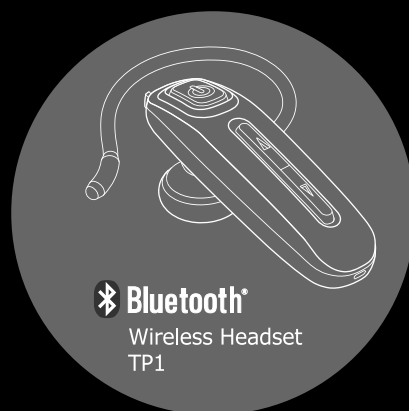
2006 MOVON Corporation. All rights reserved.  
MOVON and MOVON logo are registered trademarks of  
MOVON Corporation and our Bluetooth products.  
Bluetooth is a trademark owned by Bluetooth SIG, INC.  
and is used by MOVON Corporation under license.



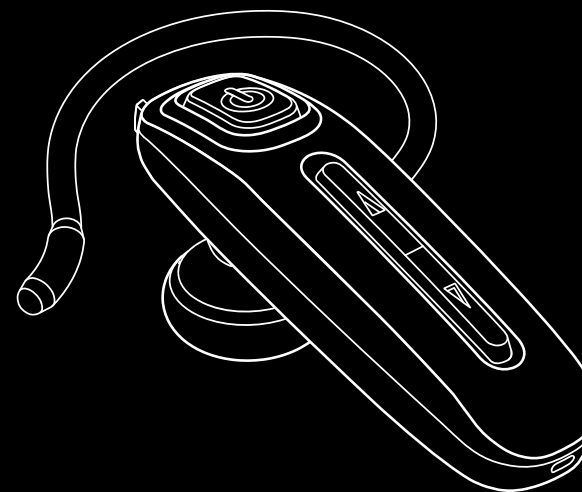
Wireless Headset TP1  
User Manual

Comfortable & Stylish

TP1



 **Bluetooth®**  
Wireless Headset  
TP1

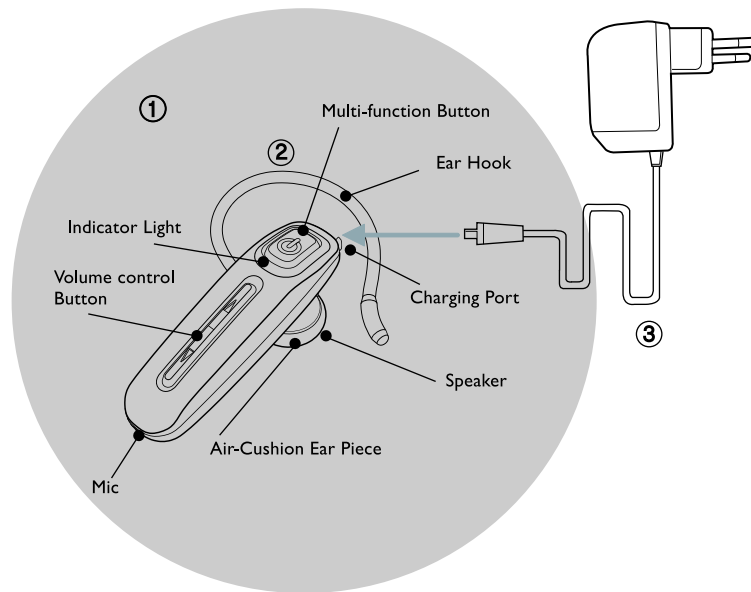


**MOVON**  
[www.movon.co.kr](http://www.movon.co.kr)

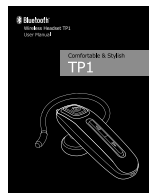
\* Specifications and features are subject to change without notice.

06-04-mv-TP1

**\* Charging a headset**



④



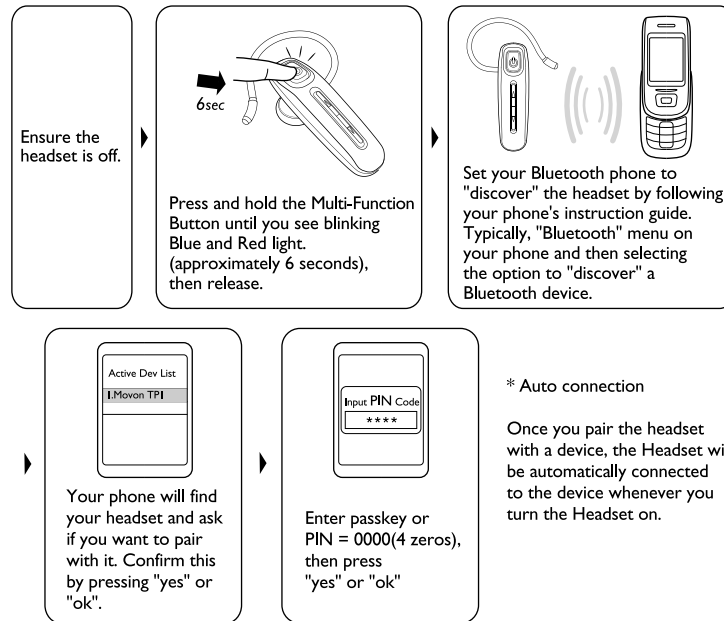
⑤

**\* Package Contents**

1. Bluetooth headset
2. Flexible ear hook
3. A/C power adapter
4. Spare Ear-Piece
5. User Manual

**\* "Pair" to your Bluetooth phone**

Before you use your headset for the first time, ensure that it is paired to use it with, such as your Bluetooth phone.



**\* Auto connection**

Once you pair the headset with a device, the Headset will be automatically connected to the device whenever you turn the Headset on.

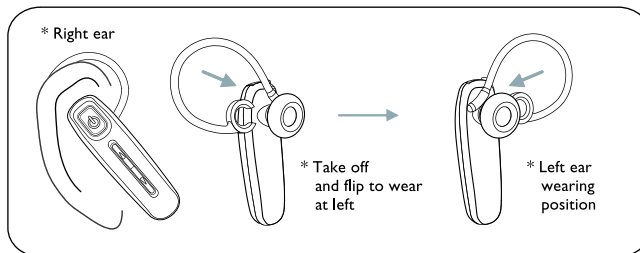
**IMPORTANT!**

When the headset paired with mobile phone, the indication light will flash two times every 5 seconds. If failed, the blue indicator light will flash one time every 5 seconds.

## \* OPERATION \*

**1** Turning headset on/off

	How to act	Tones	Indicators
Turning headset on	Press and hold the Multi-function Button for 3 seconds until you see a Blue indicator flashing, then release it.	Turn-On melody	The Blue indicator will flash while the power is on.
Turning off headset	Press and hold the Multi-function Button for 4 seconds until you see a Red indicator flashing, then release it.	Turn-Off melody	After Red indicator flash, it will turned off.

**2** Wearing Your Headset**3** Making a call**\* Using phone's keypad**

- Dial number on keypad.
- Press phone's "send" key
- Press Multi-function Button for 2 seconds, then the call will be transferred to your headset

**\* Using voice-activated dialing**

- Please check if your mobile phone support voice dialing function. If support, please set up voice tags on your mobile phone.
- Press the Multi-function Button for 2 seconds until you hear short beep. After then release the button
  - Then say the name of person who wants to call
  - You can hear melody when call is made.

NOTE: Record voice tag from headset for better reception.

**\* Last number dialing**

- Press the Multi-function Button briefly.
- You can hear connection melody.

**4** Ending a call

- Press the Multi-function Button briefly from the headset while you are on the line. You can also end call from your mobile.

**5** Reject an incoming call

- Press and hold Multi-function Button for 2 seconds and release button when you hear beep sound.

**6** Answering a call

- Press the Multi-function Button briefly when you receive an incoming call.

## 7 Transferring a call

- 1) Headset to phone:  
Press Multi-function button for 2 seconds
- 2) Phone to headset:  
Press Multi-function Button for 2 seconds



## 8 Call-Waiting (3way calling)

Before using 3 way calling with your headset, you must ensure that your phone supports the Hands-free Profile. And it is always assumed that the "call hold and/or multiparty" services are available in the network.

- Press and hold volume-down(▼)button until you hear short beep 3 times (approximately 4 seconds), then you can accept receiving waiting (incoming) call and end active call.
- Press and hold volume-up(▲) button until you hear short beep 3 times (approximately 4 seconds), then you can accept waiting (incoming) call and hold active call.  
press the volume up(▲) button or the volume down(▼) button.

## 9 Volume control & Mute function

- You can adjust the volume by pressing volume up(▲) and volume down(▼) button.
- Press and hold the volume-down (▼) button for 2 seconds, then the headset mic will be muted by being followed by the melody every 10 secs..  
Deactivate mute function.

## 10 Multi-Point function

### 1. What is Multi-Point

You can connect your headset to 2 bluetooth devices. And you are able to use them simultaneously.

- (1) Control 2 bluetooth devices with 1 headset.
- (2) You can identify which mobile is ringing with different melody  
(Note: Multipoint connection cannot be worked with some mobile phones.

### 2. Paring for Multipoint Connection

#### \* The First Paring

- (1) Ensure the headset is on pairing mode.
- (2) Search your headset from your mobile phone by following your phone instruction
- (3) Connect the first mobile phone then connect the second mobile phone.  
(Note) Please connect headset one by one.

#### \* Recovering Multipoint connection

- (1) Ensure the headset is already connected to the first Mobile phone.
- (2) Push and hold the Vol-up button for 2 seconds until you hear beep sound. Then push the Multi-Function button at once.  
The headset will be connected to the second mobile phone.  
(Note) Make sure that your second mobile phone was previously paired.

### 3. How to use Multipoint

#### [Receiving a phone call]

#### (1) Receiving a phone call

- Please push multi function button shortly then you can receive a phone call.  
And you can reject by pushing Multi point function for 2 seconds.

(Note) Your headset will automatically switch to the first ringing mobile phone.

- (2) Receiving a phone call from the second mobile phone while the first mobile is on the line.

- Please push multi Function Button shortly then the first call will be stopped.

Then push the multi function button shortly again to start the second call.

- You can reject the second call by pushing multi function button for 2 second until you hear the beep sound. And please release the button to continue the first call.

(Note) Please connect your headset via Handsfree profile to use this reject function

#### [Make a phone call] :

Please select and switch the mobile phone which you want to make a phone call. Then follow the same instruction as described already.

#### \* Switching Mobile

When the mobile is Multipoint connected, you can switch mobile by pushing Vol-Up Button for 2 seconds until you hear the beep sounds. Then please release the button to switch the mobile.

## 11 Summary of button operation

BUTTON	ACTION	HEADSET STATUS		
		Standby (No Calls Active)	Incoming Call	I Call Active
MFB	Quick Press (1 Beep)	Last Number Redial	Answer Call	Close Call
	2 Seconds (2 Beep)	Initiate Voice Dialling	Reject Call	Transfer Active Call to/from Phone
	4 Seconds (3 Beeps)	Turn Headset OFF	Turn Headset OFF	Turn Headset OFF
Volume UP	Quick Press (1 Beep)	Increase Volume	Increase Volume	Increase Volume
	2 Seconds (2 Beep)	–	–	–
	4 Seconds (3 Beeps)	–	–	Hold/Resume Call
Volume DOWN	Quick Press (1 Beep)	Decrease Volume	Decrease Volume	Decrease Volume
	2 Seconds (2 Beep)	–	–	Microphone Mute
	4 Seconds (3 Beeps)	–	–	Close Call

BUTTON	ACTION	HEADSET STATUS	
		I Call Active, I Incoming Call	I Call Active, I Call on Hold
MFB	Quick Press (1 Beep)	–	–
	2 Seconds (2 Beep)	–	Transfer Active Call to/from Phone
	4 Seconds (3 Beeps)	Turn Headset OFF	Turn Headset OFF
Volume UP	Quick Press (1 Beep)	Increase Volume	Increase Volume
	2 Seconds (2 Beep)	–	–
	4 Seconds (3 Beeps)	Answer Incoming, Hold Active	Swap calls
Volume DOWN	Quick Press (1 Beep)	Decrease Volume	Decrease Volume
	2 Seconds (2 Beep)	–	–
	4 Seconds (3 Beeps)	Answer Incoming, Close Active	Close Active, Retrieve Held Call

Please Note : The desired function is initiated only when the button is released, so it is important that the button is held for the correct period of time

## 12 Safety and General Information

1. Please read this guidebook carefully and follow the instruction
2. To avoid any damage or malfunction of the unit do not drop unit from high places
3. Keep away unit from humidity, water and any other liquid. And if the unit is exposed by water, moisture and other liquid directly then don't operate it to avoid any electrical shock, explosion and damage of the unit.
4. Do not place or keep the unit near the heat sources such as direct sun light, radiators, stoves or other apparatus which produce heat. It may cause explosion, degrade of performance and reduce battery life.
5. Do not modify, repair & disassemble unit at discretion (Especially battery: It may cause an explosion)
6. Do not place the heavy objects on the unit.
7. Use only supplied and approved charger.
8. Replacement or service must be done by qualified service center or manufacturer.
9. Unplug this unit when unused for long periods of time or during lightening storms.

### CAUTIONS: ELECTRIC SHOCK HAZARD

The battery used in this device may present a risk of fire or chemical burn if mis-treated.

## 13 FCC & IC STATEMENT

Operation is subject to the following two conditions:

- (1) This device may not cause harmful interference, and
- (2) this device must accept any interference received, including interference that may cause undesired operation.

Note: The manufacturer is not responsible for ANY interference, for example RADIO or TV interference, caused by unauthorized modifications to this equipment. Such modifications could void the user's authority to operate the equipment.

**14** EU

This product is CE marked according to the provision of the R&TTE Directive (99/5/EC). Here by MOVON Corporation, declares that this product is in compliance with the essential requirements and other relevant provisions of Directive 1999/5/EC. For further information please visit [www.movon.co.kr](http://www.movon.co.kr)

You can find the DoC from following website: [www.movon.co.kr/certificate/rtte](http://www.movon.co.kr/certificate/rtte)

Please note that this product uses radio frequency bands not harmonized within EU. Within the EU this product is intended to be used in Austria, Belgium, Denmark, Finland, France, Germany, Greece, Ireland, Italy, Luxembourg, The Netherlands, Portugal, Spain, Sweden, United Kingdom and within EFTA in Iceland, Norway and Switzerland.

Bluetooth is a trademark owned by the Bluetooth SIG, Inc.

**15** Warranty

The condition of this warranty and our responsibilities under this warranty are as follows:

Supplier's warranty is non-transferable. And this warranty is limited to the original purchaser only.

- " You must be able to prove the date of original purchase of the unit with a dated receipt.
- " The warranty is not applicable if the product has been subject to physical abuse, improper installation, modification or repair by unauthorized third party.
- " The responsibility of supplier's products shall be limited to the repair or replacement of the product at it's sole discretion.
- " Specifically exempt from any warranty are limited-life consumable components subject to normal wear and tear such as batteries, decorates and other accessories.
- " A supplier will not take any responsibility if the failure of the unit has resulted from accident, abuse, misuse, or any unauthorized repair, modification or disassemble.
- " Modification and repair of the unit should be done by authorized and qualified service personnel, Center or returned to the manufacturer
- " This warranty gives you specific legal rights, and you may also have other rights which vary under local laws.

**16** WEEE Symbol Information

### Correct Disposal of This Product (Waste Electrical & Electronic Equipment)

(Applicable in the European Union and other European countries with separate collection systems)

This marking shown on the product or its literature, indicates that it should not be disposed with other household wastes at the end of its working life. To prevent possible harm to the environment or human health from uncontrolled waste disposal, please separate this from other types of wastes and recycle it responsibly to promote the sustainable reuse of material resources.

Household users should contact either the retailer where they purchased this product or their local government office, for details of where and how they can take this item for environmentally safe recycling.

Business users should contact their supplier and check the terms and conditions of the purchase contract. This product should not be mixed with other commercial wastes for disposal.