

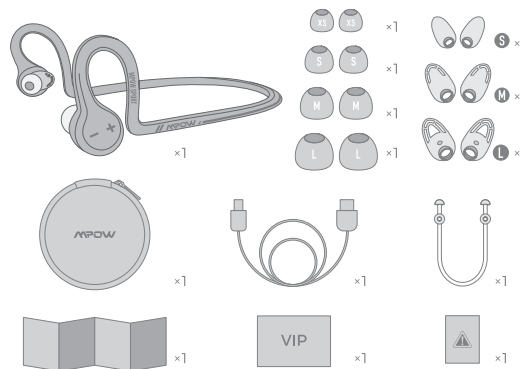
MPow
DREAM-EXPLORE-INSPIRE

MPow DASH Bluetooth Headphone

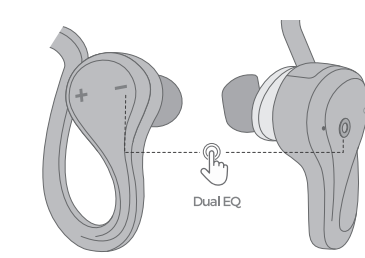
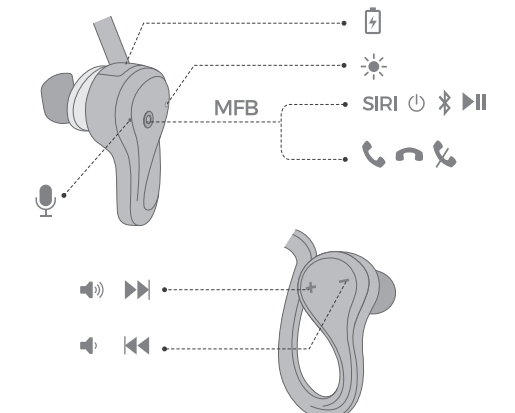
MODEL: BH367A

We are appreciated for purchasing our Mpow Dash. This guide contains instructions for setting up and using your Mpow Dash easily.

Package List

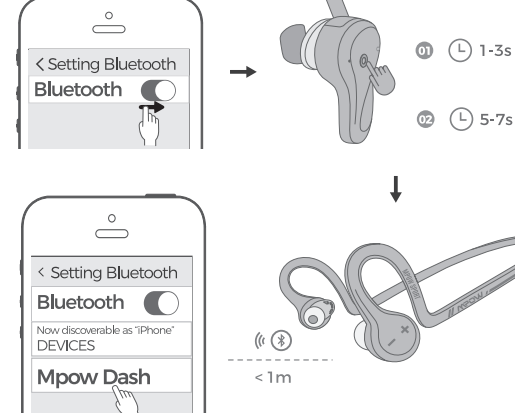


Diagram



- Switch between Bass+ and Well-balanced Sound
- Wechseln Sie zwischen Bass+ und ausgewogenem Klang
- Basculer entre Bass+ et Son Bien Equilibré
- Cambia entre Bass+ y un sonido bien equilibrado
- Interruttore tra Bass+ e Sound Ben Bilanciato

How To Pair



First use

- Turn on the Bluetooth function on your phone.
- Power it on, then it will enter the pairing mode automatically. Red and blue lights will start flashing alternately with the voice 'Pairing'.
- Search for the Bluetooth devices and select 'Mpow Dash'. Enter the code '0000' if needed.
- When pairing is successful, the blue light will start flashing slowly. You will also hear the voice 'Connected'.

Pair to another device

- In the state of shut-down, press and hold on the MFB button for 5-7 seconds or so. Do not release it until the red and blue lights start flashing alternately with the voice 'Pairing'.
- The rest goes the same as above.

Erste Verwendung

- Schalten Sie die Bluetooth-Funktion Ihres Handys ein.
- Schalten Sie die Kopfhörer ein und wechseln sie automatisch in den Pairing Modus. Nach dem Laden der Taste muss die Kontrolllampe Rot und Blau abwechselnd blinken mit der Stimme 'Pairing'.

- Suchen Sie die Bluetooth-Geräte und wählen Sie 'Mpow Dash' (Geben Sie ggf. den Passworts '0000' ein).
- Wenn die Kopplung erfolgreich ist, beginnt das Blau Kontrolllampe langsam zu blinken. Sie hören auch die Stimme 'Connected'.

Koppeln mit einem anderen Gerät

- Schalten Sie den gekoppelten Gerät aus und dann drücken Sie die MFB ca. 5-7 Sekunden lang, bis die Roten und Blauen Kontrolllampe abwechselnd mit der Stimme 'Pairing' blinken um mit einem anderen Gerät zu koppeln.
- Der Rest geht genauso wie oben.

Première utilisation

- Activez la fonction Bluetooth sur votre téléphone.
- Allumez. Il passera automatiquement en mode de couplage. Vous pouvez voir les lumières rouge et bleu commencer à clignoter en alternance avec la voix 'Pairing'.
- Recherchez les appareils Bluetooth et sélectionnez 'Mpow Dash' (entrez le code '0000' si nécessaire).
- Si l'appariement est réussi, la lumière bleu commence à clignoter lentement. Vous entendrez également la voix 'Connected'.

Appairer à un autre appareil

- Éteint, maintenez le bouton MFB enfoncé pendant environ 5-7 secondes jusqu'à ce que les voyants rouge et bleu se mettent à clignoter en alternance avec la voix 'Pairing'.
- Le reste va comme ci-dessus.

Primer uso

- Encienda la función Bluetooth en su teléfono.
- Encienda y entrará automáticamente en el modo de emparejamiento. Puede ver que las luces naranja y blanca comienzan a parpadear alternativamente con la voz 'Pairing'.
- Busque los dispositivos Bluetooth y seleccione 'Mpow Dash' (ingrese el código '0000' si es necesario).
- Si la sincronización es exitosa, la luz blanca comienza a parpadear lentamente. También escuchará la voz 'Connected'.

Emparejar a otro dispositivo

- En el estado de apagado, mantenga presionado el botón MFB durante aproximadamente 5 a 7 segundos. No lo suelte hasta que las luces rojas y azules comiencen a parpadear alternativamente con la voz 'Pairing'.
- El resto va igual que el anterior.

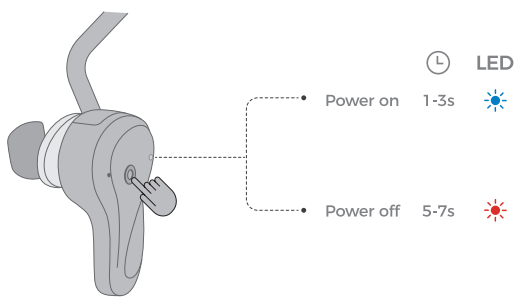
Primo utilizzo

- Attivare la funzione Bluetooth sul telefono.
- Accendere poi entrerà automaticamente in modalità di collegare. Potrebbe vedere l'indicatore rosso e blu che iniziano a lampeggiare alternativamente con la voce 'Pairing'.
- Cercare i dispositivi Bluetooth e selezionare 'Mpow Dash' (inserisci il codice '0000' se necessario).
- Se il collegamento ha avuto successo, l'indicatore blu inizia a lampeggiare lentamente. Sentirà anche la voce 'Connected'.

Collegare ad un altro dispositivo

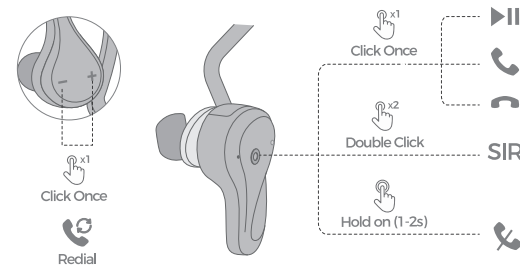
- Spegner e gli auricolari, tenere premuto il tasto MFB per circa 5-7 secondi fino a quando l'indicatore rosso e blu iniziano a lampeggiare alternativamente con la voce 'Pairing'.
- Il resto va come sopra.

Power ON / OFF



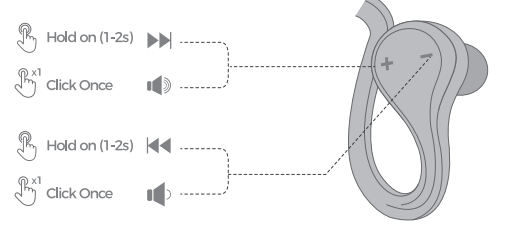
Play / Pause / Answer / Hang Up / Activate Siri / Reject / Redial

Spielen / Pause / Antworten / Auflegen / Siri Aktivieren / Ablehnen / Wahlwiederholung
Jouer / Pause / Réponse / Raccrocher / Activer Siri / Rejeter / Rappel
Reproducir / Pausa / Contestar / Colgar / Activar Siri / Rechazar / Remarcar
Riproduzione / Pausa / Risposta / Riaggancia / Attivare Siri / Rifiuta / Riproduzione

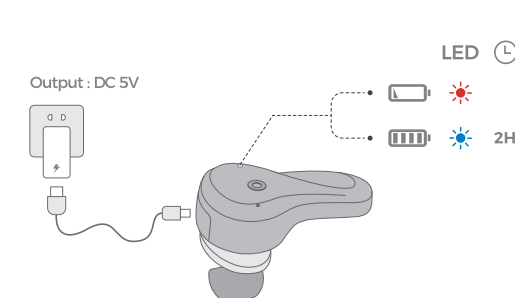


Volume Control / Music Control

Lautstärkereger / Musiksteuerung
Contrôle du Volume / Contrôle de la Musique
Control de Volumen / Control de la Música
Controllo del Volume / Controllo della Musica



Charge Battery



Correct Disposal of This Product

(Waste Electricals Electronic Equipment.)
This Marking shown on the product or its literature, indicate that it should not be disposed with other household wastes at the end of its working life.

To prevent possible harm to the environment or human health from uncontrolled waste disposal, please separate this from other types of wastes and recycle it responsibly to promote the sustainable reuse of material resources. Household user should contact either the retailer where they purchased this product, or their local government office, for details of where and how they can take this item for environmentally safe recycling.

Business users should contact their supplier and check the terms and conditions of the purchase contract. This product should not be mixed with other commercial wastes for disposal.

FCC Statement

Operation is subject to the following three conditions:
(1) This device may not cause harmful interference, and
(2) This device must accept any interference received, including interference that may cause undesired operation.

(3) This device has been evaluated to meet general RF exposure requirement. The device can be used in portable exposure condition without restriction.

Note:

This equipment has been tested and found to comply with the limits for a Class B digital device, pursuant to part 15 of the FCC Rules. These limits are designed to provide reasonable protection against harmful interference in a residential installation. This equipment generates, uses and can radiate radio frequency energy and, if not installed and used in accordance with the instructions, may cause harmful interference to radio communications. However, there is no guarantee that interference will not occur in a particular installation. If this equipment does cause harmful interference to radio or television reception, which can be determined by turning the equipment off and on, the user is encouraged to try to correct the interference by one or more of the following measures:

- Reorient or relocate the receiving antenna.
- Increase the separation between the equipment and receiver.
- Connect the equipment into an outlet on a circuit different from that to which the receiver is connected.
- Consult the dealer or an experienced radio / TV technician for help.

Any Changes or modifications not expressly approved by the party responsible for compliance could void the user's authority to operate the equipment.

Notification

- Please fully charge it if it was going to lay idle for a long time and place it in a cool and dry place. Please recharge it each 2 months for storage.
- Please fully charge it for the first use.

Benachrichtigung

- Wenn Kopfhörer für lange Zeit nicht verwendet wird, laden Sie bitte es voll auf und bewahren Sie es an einem kühlen und trockenen Platz. Bitte laden Sie es alle 2 Monate zur Lagerung auf.
- Bitte laden Sie es für den ersten Gebrauch auf.

Notificación

- Por favor, cárguelo por completo si va a estar inactivo durante mucho tiempo, y colóquelo en un lugar fresco y seco. Por favor recárguelo cada 2 meses para su almacenamiento.
- Por favor, cárguelo completamente para el primer uso.

Notificazione

- Si prega di caricarlo completamente se stava per essere rimesso inattivo per lungo tempo e mettetelo in un luogo fresco e asciutto. Si prega di ricarica ogni 2 mesi per l'archiviazione.
- Si prega di caricarlo completamente per il primo utilizzo.

Notification

- Veuillez le charger complètement s'il allait rester inactif pendant un certain temps et le placer dans un endroit frais et sec. Veuillez le recharger tous les 2 mois pour le stockage.
- Chargez-le complètement lorsque vous l'utilisez pour la première fois.

www.xmpow.com | support@xmpow.com
MPow TECHNOLOGY CO., LTD
Copyright © MPow Inc. All rights reserved.