

# Owner's Operating Service Instruction Manual

10¢

Model No.  
115\_340A

- ASSEMBLY
- OPERATION
- REPAIR PARTS

## 22" ROTARY MOWER

### WARRANTY

For one year from date of purchase, MTD Products Inc will replace for the original purchaser, free of charge, F.O.B. factory or authorized service firm, any part or parts found to be defective in material or workmanship. All transportation charges on parts submitted for replacement under this warranty must be paid by the purchaser. This warranty does not include replacement of parts which become inoperative through misuse, excessive use, accident, neglect, improper maintenance or alterations by unauthorized persons. This warranty does not include the engine, motor, battery, battery charger or any component parts thereof. For service on these units, refer to the applicable manufacturer's warranty.

The above warranty will apply only to the original owner and will be effective only if the warranty card has been properly processed. It will not apply where the unit has been used commercially.

Warranty service is available through your local authorized service dealer or distributor. **UNDER NO CIRCUMSTANCES WILL THE RETURN OF A COMPLETE UNIT BE ACCEPTED BY THE FACTORY UNLESS PRIOR WRITTEN PERMISSION HAS BEEN EXTENDED.**

# I M P O R T A N T

## SAFE OPERATION PRACTICES FOR WALK-BEHIND MOWERS

### TRAINING

1. Read the Operating and Service Instruction Manual carefully. Be thoroughly familiar with the controls and the proper use of the equipment.
2. Never allow children to operate a power mower.
3. Keep the area of operation clear of all persons, particularly small children and pets.

### PREPARATION

1. Thoroughly inspect the area where the equipment is to be used and remove all stones, sticks, wire, bones and other foreign objects.
2. Do not operate equipment when barefoot or wearing open sandals. Always wear substantial footwear.
3. Check the fuel before starting the engine. Do not fill the gasoline tank indoors, when the engine is running, or while the engine is still hot. Wipe off any spilled gasoline before starting the engine.
4. Disengage the self-propelled mechanism or drive clutch on units so equipped before starting the engine.
5. Never attempt to make a wheel adjustment while the engine is running.
6. Mow only in daylight or in good artificial light.
7. Never operate the equipment in wet grass. Always be sure of your footing; keep a firm hold on the handle and walk, never run.

### OPERATION

1. Do not change the engine governor settings or overspeed the engine.
2. Do not put hands or feet near or under rotating parts. Keep clear of the discharge opening at all times.
3. Stop the blade(s) when crossing gravel drive, walks or roads.
4. After striking a foreign object, stop the engine, remove the wire from the spark plug, thoroughly inspect the mower for any damage, and repair the damage before restarting and operating the mower.

5. If the equipment should start to vibrate abnormally, stop the engine and check immediately for the cause. Vibration is generally a warning of trouble.
6. Stop the engine whenever you leave the equipment, before cleaning the mower housing, and when making any repairs or inspections.
7. When cleaning, repairing or inspecting, make certain the blade and all moving parts have stopped. Disconnect the spark plug wire, and keep the wire away from the plug to prevent accidental starting.
8. Do not run the engine indoors.
9. Shut the engine off and wait until the blade comes to a complete stop before removing the grass catcher or unclogging chute.
10. Mow across the face of slopes, never up-and-down. Exercise extreme caution when changing direction on slopes. Do not mow excessively steep slopes.
11. Always disconnect electric mowers (line operated) before cleaning, repairing or adjusting.
12. Never operate mower without proper guards, plates or other safety protective devices in place.
13. Keep washout ports and other mower-housing service openings closed when mowing.
14. **DONOT OPERATE** this mower with the chute doors open, unless the complete grass catcher is properly mounted on the mower.

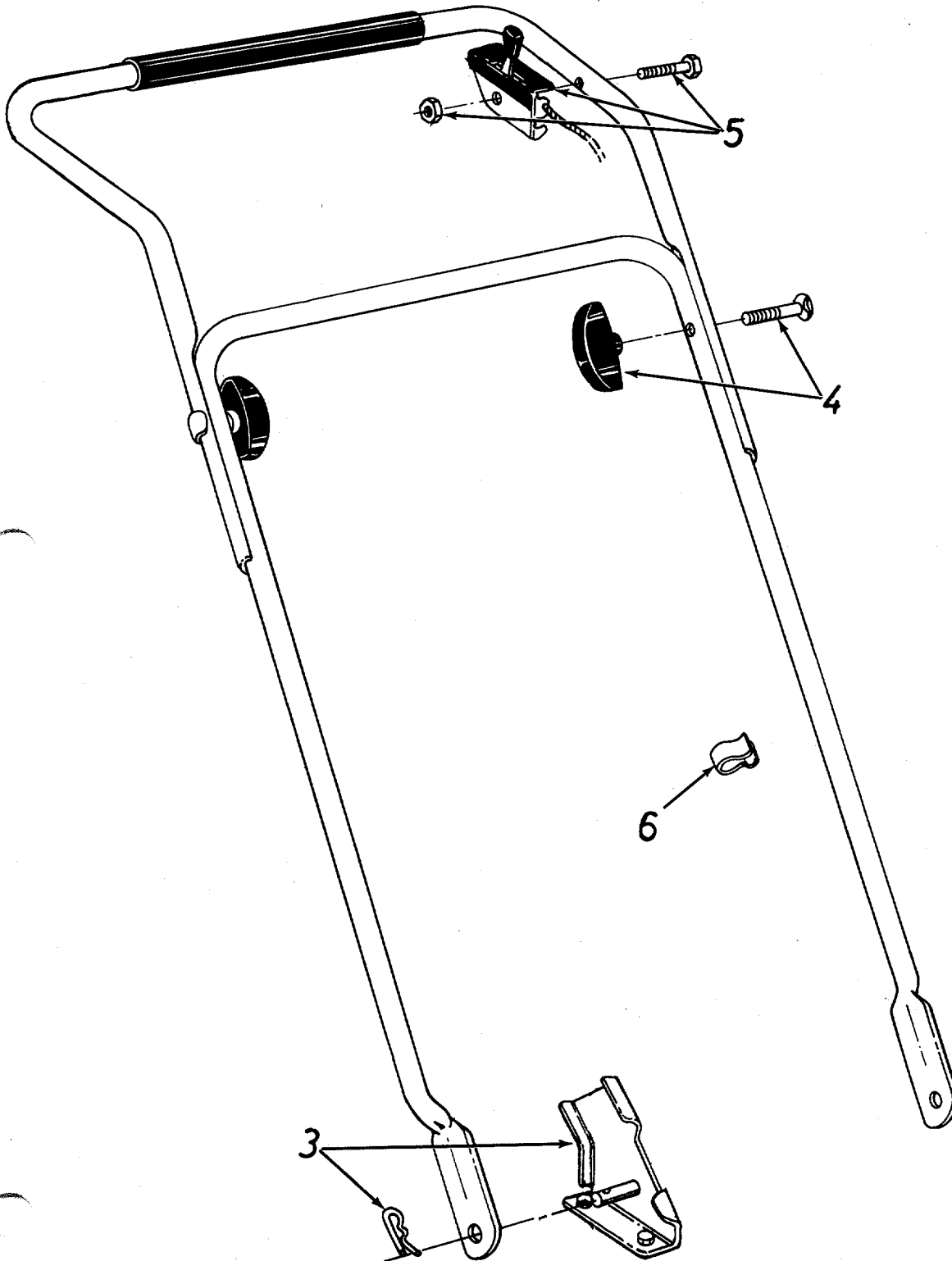
### MAINTENANCE AND STORAGE

1. Check the blade and engine mounting bolts at frequent intervals for proper tightness.
2. Keep all nuts, bolts, and screws tight to be sure the equipment is in safe working condition.
3. Never store the equipment with gasoline in the tank inside of a building where fumes may reach an open flame or spark. Allow the engine to cool before storing in any enclosure.
4. To reduce fire hazard, keep the engine free of grass, leaves, or excessive grease.
5. Check the grass catcher bag frequently for wear or deterioration. Replace with new bag for safety protection.

## HANDLE ASSEMBLY

Follow instructions starting with number 1 and continue through number 7.

Your new mower is shipped preassembled with the exception of the throttle control, handle and grass catcher (See page 4 for grass catcher assembly).



1. Remove lawnmower and all parts from carton. Make certain that all loose parts and literature have been removed before the carton is discarded.

2. Extend throttle control assembly which is attached to engine at the rear of the mower and place on the floor.

**CAUTION:** Do not bend or kink control wire.

3. Fasten lower handle in position in handle mount brackets on deck. Secure with cotter pins as shown.

### NOTE

It may be necessary to bend the ends of the lower handle inward slightly to assure a snug fit against the bracket mounting area.

4. Assemble the upper and lower handle parts with curved head bolts and handle knobs provided in parts bag. Throttle control mounting hole should be to the operator's left as shown.

5. Fasten the throttle control to the upper handle. Mounting hole should be to the operator's left. Use one hex screw and locknut provided in parts bag.

6. Secure throttle control wire to lower left handle with cable clips.

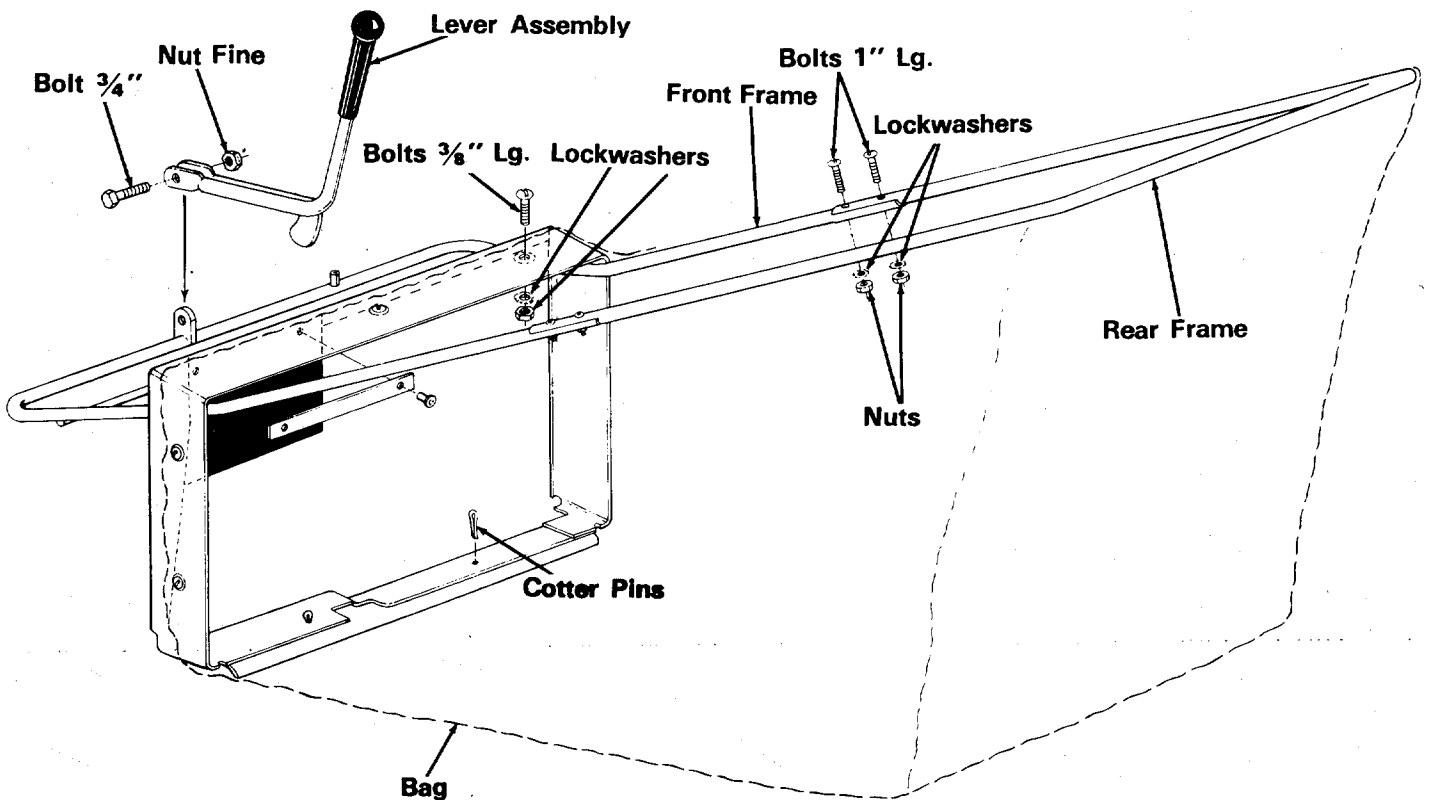
7. Check ALL nuts and bolts for correct tightness.

# Assembly - Grass Catcher

The grass catcher is partially assembled. The hardware needed is in the assembly pack. It consists of

- 7 bolts  $\frac{3}{8}$ " long
- 4 bolts 1" long
- 11 lockwashers
- 11 nuts
- 2 cotterpins
- 2 sheet metal screws
- 1 bolt  $\frac{3}{4}$ " long
- 1 locknut  $\frac{5}{16}$ " fine
- 1 lever assembly

- 1 Assemble the rear frame to the front frame with the four 1" bolts, lockwashers and nuts.
- 2 Slip the bag over the frame from the rear.
- 3 Fasten the bag to the frame with the 7 bolts  $\frac{3}{8}$ " long, lockwashers and nuts. Start with the three holes on top of the bag, then do both sides.
- 4 Fit the lower edge of the bag into the slot in the bottom of the front frame and place the two cotter pins through the front frame and the eyelets in the bag.
- 5 Bend the ends of the cotter pins over.
- 6 Use the two sheet metal screws to attach the handle to the rear frame. (Note: Handle is assembled on the outside of bag.)
- 7 Assemble the lever assembly to the front frame with a  $\frac{3}{4}$ " bolt and  $\frac{5}{16}$ " fine thread nut.
- 8 Place the sleeve over the shoulder screw and assemble it to the lever assembly from the right side and secure it with the  $\frac{5}{16}$ " course thread nut.



## ASSEMBLE GRASS CATCHER TO MOWER

1. Slide grass catcher into position on mower, making sure the roll pin on grass catcher frame goes into slot provided. See figure 1.

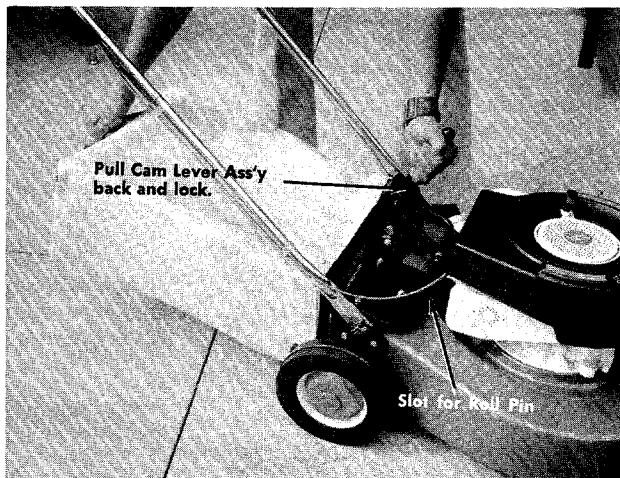
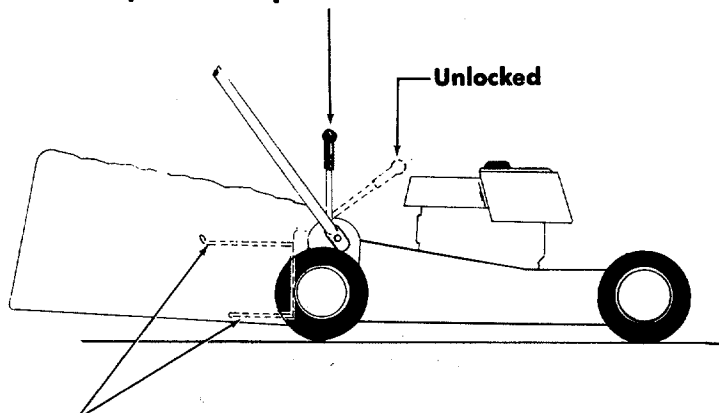


FIGURE 1. ASSEMBLY OF GRASS CATCHER TO MOWER

2. Pull the cam lever assembly back towards the rear of the mower and lock. See figure 1.

Grass Catcher is locked on mower when Cam Lever Ass'y. is in this position.



Discharge Chute Doors are open when Grass Catcher is in position and the Cam Lever is in locked position as shown above.

FIGURE 2. DETAIL OF CHUTE DOORS



Unless the entire grass catcher is correctly positioned on the mower, do not open the discharge chute doors when the engine is running.

### NOTE

Periodically check the cam lever on grass catcher for correct alignment on roller. The cam lever **must** hit on center of roller to lock the grass catcher in position and open the doors all the way open.

## OPERATION

### NOTE

For shipping purposes your mower is set with the wheels in a low cutting height position. For best results raise the cutting position until it is determined which height is best for your lawn. See adjustments.

1. Service engine with gas and oil. See engine manual packed with lawn mower for complete instructions for the care and maintenance of engine. **READ DIRECTIONS CAREFULLY.**
2. When ready to start engine, place throttle control lever in "START" position and start engine in accordance with instructions in engine manual. After engine starts, move throttle control lever to desired engine speed. The engine is stopped by placing control lever in the "STOP" position.
3. Be sure that lawn is clear of stones, sticks, wire or other objects which could damage lawn mower or engine. For best results and to insure more even grass distribution, do not mow when lawn is excessively wet.

## ADJUSTMENTS

### CAUTION

Do not at any time make any adjustment to lawn mower without first stopping engine and disconnecting spark plug wire.

## CUTTING HEIGHT

An adjusting plate and thumb lever at each wheel position provides cutting height adjustment. Each adjusting plate has five holes. Height of cut will be changed when the thumb lever is moved from one hole to another. Simply depress thumb lever towards wheel and move wheel and lever assembly to desired position. Cutting height will be raised as lever is moved toward front and lowered as ever is moved toward rear. All wheels must be positioned in relative height of cut positions.

## REMOTE THROTTLE

If adjustment becomes necessary, the throttle control wire assembly can be reset as follows:

1. Loosen, but do not remove, screw securing throttle control wire assembly at engine.
2. Move throttle control lever on handle to "FAST" position.
3. Move lever, to which control wire is fastened at engine, to full open position and retighten screw to secure throttle control wire assembly.

## LUBRICATION

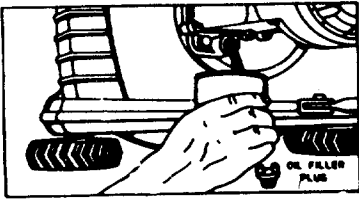
**IMPORTANT:** Always stop engine and disconnect spark plug wire before cleaning, lubricating or doing any kind of work on lawn mower.

**Wheels**—Unit is provided with ball bearing wheels, lubricate at least once a season with light oil.

**Throttle**—Periodically lubricate throttle control lever and throttle wire assembly with a few drops of light oil (SAE No. 10 or 20) for ease of operation.

**Engine**—Follow engine manual for lubrication instructions.

**Discharge Chute Door Mechanism**—The torsion spring and pivot point should be lubricated periodically with light oil to prevent any rust or binding. Doors must work freely.



**NOTE: FILL AND DRAIN OIL FROM OIL FILL PLUG.**

Always disconnect spark plug cable during repairs, refueling or changing oil. Engine oil may be drained through oil filler opening by tilting the mower on its side. Change oil after first 5 hours of operation while engine is warm. Thereafter, change oil every 25 hours of operation while engine is warm.

## MAINTENANCE

**Cutting Blade**—The blade may easily be removed for grinding or replacement as follows:

1. Remove bolt and lockwasher holding blade and blade adapter to engine crankshaft.
2. Remove blade and blade adapter from engine crankshaft.
3. Remove two bolts, lockwashers and nuts holding blade to blade adapter (if necessary).

When sharpening blade, follow the original angle of grind as a guide. It is extremely important that each cutting edge receives an equal amount of grinding to prevent an unbalanced blade. An unbalanced blade will cause excessive vibration when rotating at high speeds and may cause personal injury or damage to the mower. Upon reassembly, make certain all parts are assembled properly and tightened securely.

## NOTE

To insure safe operation of your unit, ALL nuts and bolts must be checked periodically for correct tightness.

**Deck**—The underside of the mower deck should be cleaned after each period of use as grass clippings, leaves, dirt and other matter will accumulate. This accumulation of grass clippings, etc., is undesirable as it will invite rust and corrosion and may cause an uneven discharge of grass clippings at the next cutting.

The deck may be cleaned by tilting the mower forward or on its side and scraping clean with a suitable tool or by washing with a stream of water from a garden hose.

## CAUTION

Do not direct the stream of water at a hot engine, as damage to the engine may result.

**Storage**—The following steps should be taken to prepare lawn mower for storage:

1. Clean and lubricate mower thoroughly as described in the preceding instructions.
2. Refer to engine manual for correct engine storage instructions.
3. Coat mower's cutting blade with chassis grease to prevent rusting.
4. Place blocks under deck to raise tires clear of floor.
5. Store mower in a dry, clean area.

## USING YOUR ROTARY MOWER

For best results, do not cut wet grass because it tends to stick to underside of the mower thus preventing proper discharge of grass clippings. If wet grass must be cut, reduce walking speed.

New grass should be treated as wet grass, otherwise a normal walking speed is about the right pace for efficient mowing.

Lawn should be cut in the fall as long as there is growth.

## **HANDLE STORAGE**

This model is so equipped to provide easy fold away handle storage.

1. Loosen the two plastic knobs on each side, center of handle.
2. Pull outward on the bottom of each side of the lower handle and push forward.
3. Fold the upper handle back and down.

### **To Take the Handle out of Storage Position.**

1. Lift the upper handle up and towards the rear.
2. Pull the handle back until it **Locks** into the operator's position.
3. Tighten the two plastic knobs securely.

### **NOTE**

The manufacturer DOES NOT recommend the use of any accessory on this rotary mower other than those manufactured by MTD Products Inc.

### **WARNING**

Do not operate the mower with the chute doors open unless the complete grass catcher is properly mounted on the mower.

### **NOTE:**

Under normal usage bag material is subject to wear and should be checked periodically. Be sure any replacement bag complies with the mower manufacturer's recommendations.

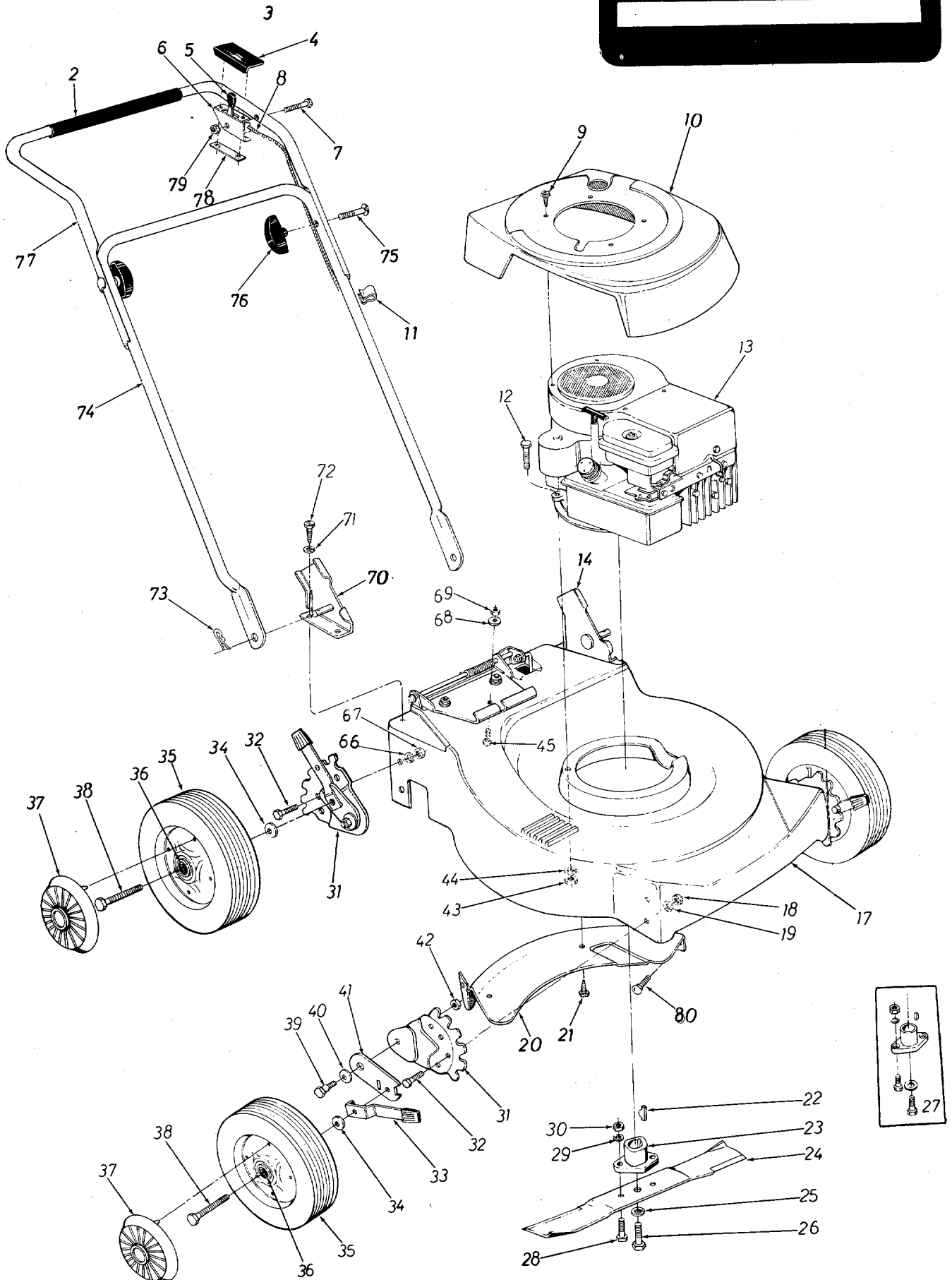
For replacement bags, use only factory authorized replacement bag No. 764-0130

### **★ IMPORTANT**

After striking a foreign object, stop the engine (motor), remove wire from spark plug. Thoroughly inspect the mower for any damage, and repair the damage before restarting and operating the mower.

# 115\_340A

IF YOU WRITE TO US ABOUT THIS ARTICLE  
OR IF YOU ORDER REPLACEMENT PARTS AL-  
WAYS MENTION THIS MODEL & SERIAL NO  
MODEL





**PARTS LIST FOR MODEL 115-340A**


REF. NO.	PART NO.	COLOR CODE	DESCRIPTION	NEW PART	REF. NO.	PART NO.	COLOR CODE	DESCRIPTION	NEW PART
2	718-0144		Grip		32	710-0216		Hex Scr. 3/8-16 x .75" Lg.*	
3	746-0256		Throttle Control Ass'y. Comp.	N	33	10530		Spring Lever Ass'y. with Knob	
4	731-0180		Plastic Label		34	736-0105		Belleville Wash. .400 I.D. x .88 O.D.	
5	731-0189		Control Knob		35	734-0643		Wheel Ass'y. Comp.	
6	746-0179		Throttle Control Ass'y.		36	741-0178		Ball Bearing (2 Req'd.)	
7	710-0606		Hex Scr. 1/4-20 x 1.50" Lg.*		37	731-0124		Hub Cap	
8	746-0255		Conduit and Wire	N	38	710-0427		Hex Scr. 3/8-16 x 2.00" Lg.*	
9	710-0227		Slot Hex Hd. Self Extr. Scr. #8- x .38' Lg.*		39	738-0269		Shoulder Scr.	
10	731-0303		Engine Shroud		40	736-0255		Belleville Wash. .500 I.D. x 1.14 O.D.	N
11	746-0128		Cable Clip		41	10619		Pivot Bar	
12	710-0442		Hex Scr. 5/16-18 x 1.50" Lg.*		42	712-0375		Hex Cent. L-Nut 3/8-16 Thd.	
13	—		Engine		43	712-0267		Hex Nut 5/16-18 Thd.*	
14	12575		Handle Mount Brkt. Ass'y.—L.H.	N	44	736-0119		L-Wash. 5/16" Scr.*	
17	12610-462		22" Deck Ass'y.	N	45	710-0134		Car. Bolt 1/4-20 x .62" Lg.	
18	712-0798		Hex Nut 3/8-16 Thd.*		66	736-0169		L-Wash. 3/8" Scr.*	
19	736-0169		L-Wash. 3/8" Scr.*		67	712-0798		Hex Nut 3/8-16 Thd.	
20	12607-462		Cover Plate	N	68	736-0329		L-Wash. 1/4" Scr.	
21	710-0618		Fl.-Hd. Phil. Scr. 1/4-20 x .62" Lg.	N	69	712-0287		Hex Nut 1/4-20 Thd.	
22	714-0365		#6 Hi-Pro-Key 5/32 x 3/8" Dia.		70	12576		Handle Mount Brkt. Ass'y.—R.H.	N
23	10769		Blade Adapter Kit		71	736-0329		L-Wash. 1/4" Scr.*	
24	742-0125		22" Blade		72	710-0588		Hex Hd. Self Tapp Scr. 1/4-20 x 1.00" Lg.	
25	736-0217		L-Wash. 3/8" Scr. Heavy Duty		73	714-0104		Intern. Cotter Pin 5/16" Dia.	
26	710-0459		Hex Scr. 3/8-24 x 1.50" Lg. H.T.		74	749-0179		Lower Handle	N
27	10769		Blade Adapter Kit		75	710-0405		Curved Car. Bolt 5/16-18 x 1.75" Lg.	
28	710-0117		Hex Scr. 5/16-24 x 1.00" Lg. H.T.		76	09966		Hand Knob	
29	736-0119		L-Wash. 5/16" Scr.*		77	749-0180		Upper Handle	N
30	712-0123		Hex Nut 5/16-24 Thd.*		78	726-0134		Speed Nut—Twin Type	
31	12321		Ht. Adj. Ass'y. Comp.—L.H.		79	712-0107		Hex Cent. L-Nut 1/4-20 Thd.	
	12322		Ht. Adj. Ass'y. Comp.—R.H.		80	710-0258		Hex Scr. 1/4-20 x .62" Lg.*	
	12323		Index Plate						

\*For faster service obtain standard nuts and bolts locally. If these items cannot be obtained locally, order by part number and size as shown on the parts list.

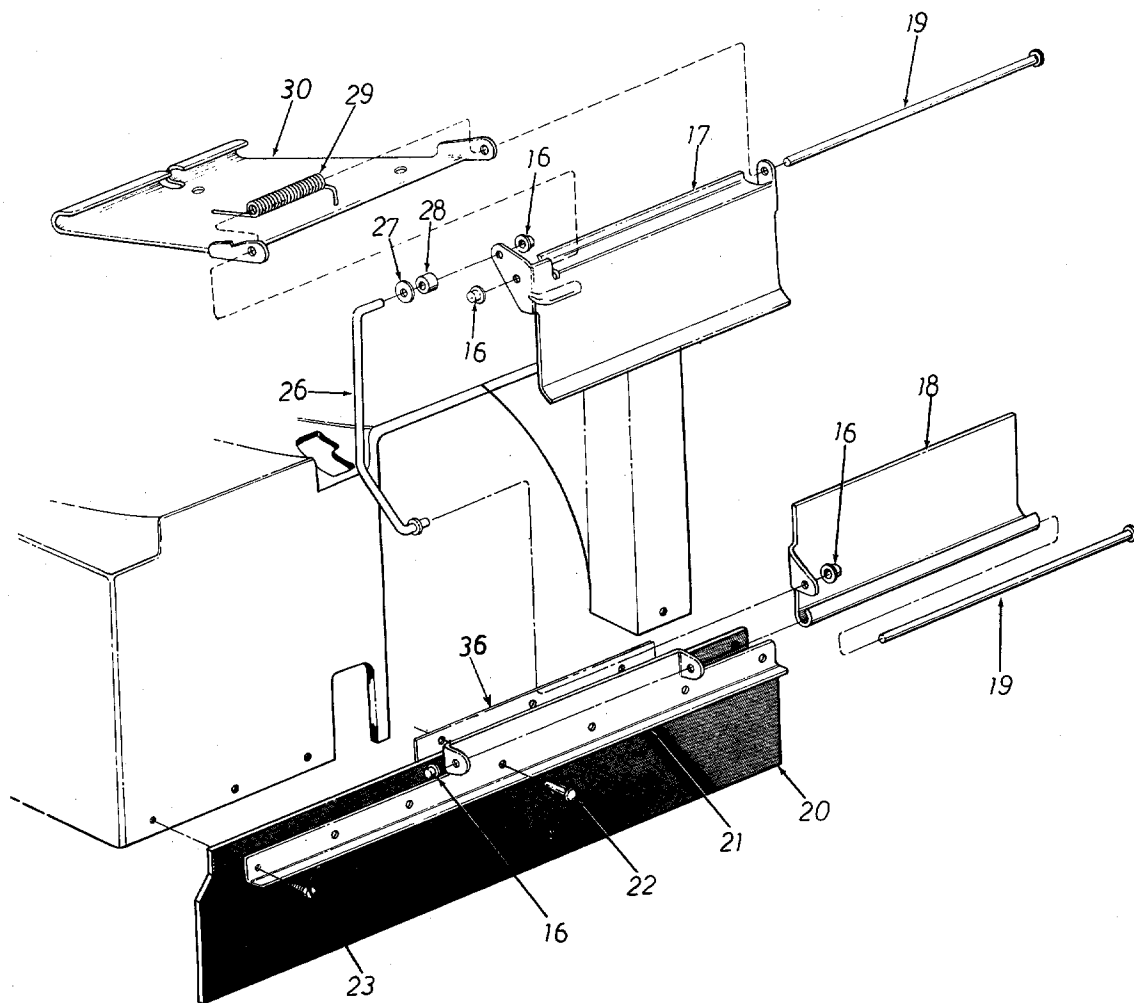
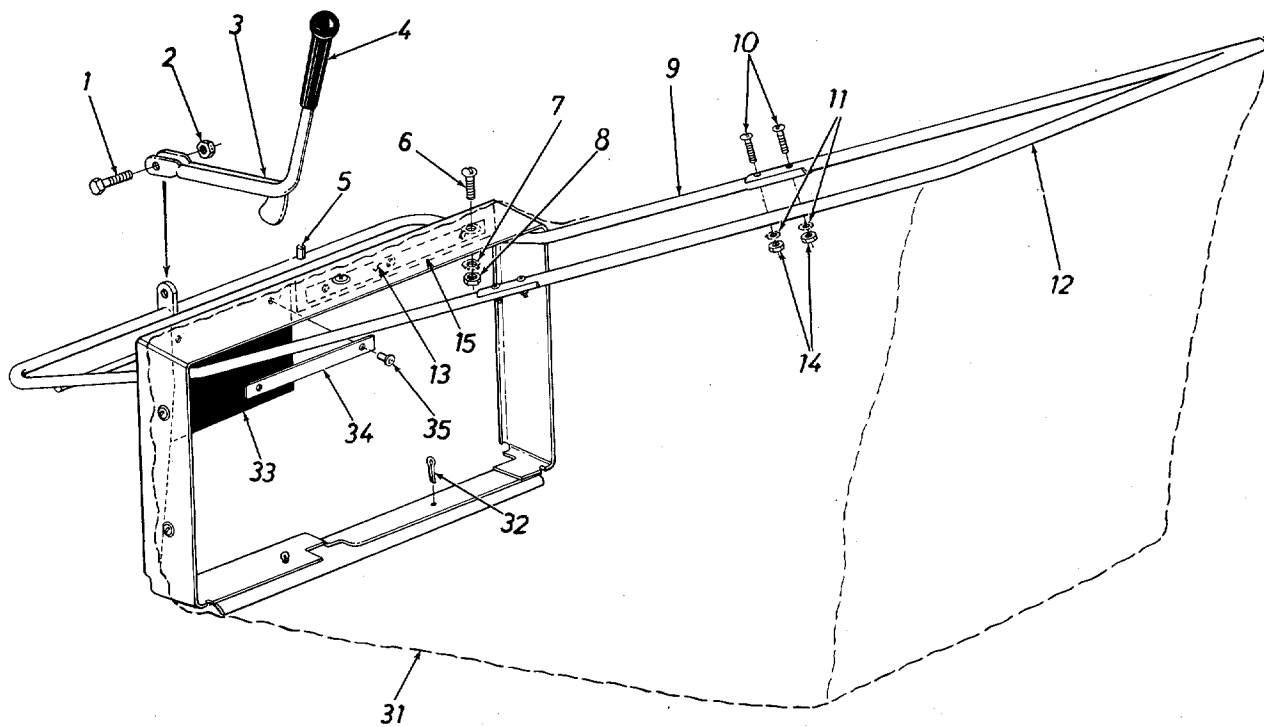
(462—Red Flake) When ordering parts, if color or finish is important, use the appropriate color code shown at left. (e.g. Red Flake Finish 12610 (462).)

The engine is not under warranty by the mower manufacturer. If repairs or service is needed on the engine, please contact your nearest authorized engine service outlet. Check the "Yellow Pages" of your telephone book under "Engines—Gasoline."

Find It Fast  
In The  
**'Yellow Pages'**



# 115\_340A



**PARTS LIST FOR MODEL 115-340A**


REF. NO.	PART NO.	COLOR CODE	DESCRIPTION	NEW PART	REF. NO.	PART NO.	COLOR CODE	DESCRIPTION	NEW PART
1	710-0117		Hex Scr. 5/16-24 x 1.00 Lg.*		18	12194		Chute Door—Lower Half	
2	712-0237		Hex Center L-Nut 5/16-24 Thd.		19	738-0253		Hinge Rod	
3	12393		Cam Lever Ass'y.		20	735-0169		Rear Protective Flap	
4	720-0143		Grip		21	12305		Rear Safety Shield Plate	
5	715-0247		Spring Pin Spiral		22	728-0128		Rivet	
6	710-0192		Truss Mach. Scr. #10-24 x .38" Lg.		23	710-0436		Hex B-Tapp Scr. #10Z x .62" Lg.*	
7	736-0147		Ext. L-Wash. #10 Scr.*		26	747-0141		Connecting Rod	
8	712-0121		Hex Nut #10-24 Thd.*		27	736-0159		Fl.-Wash. .340 I.D. x .88 O.D.	
9	12579		Catcher Frame Ass'y. Lower Half	N	28	750-0258		Roller Spacer	
10	710-0467		Rd. Hd. Mach. Scr. #10-24 x 1.00" Lg.*		29	732-0295		Torsion Spring	
11	736-0147		Ext. L-Wash. #10 Scr.*		30	12192		Grass Catcher Adapter	
12	749-0178		Frame—Rear Half	N	31	764-0130		Bag	N
13	12316		Reinforcement Bar		32	714-0115		Cotter Pin 1/8" Dia. x 1.00" Lg.*	
14	712-0121		Hex Nut #10-24 Thd.*		33	735-0168		Grass Catcher Flap	
15	735-0183		Grass Catcher Flap	N	34	12185		Reinforcement Bar	
					35	728-0128		Rivet	
					36	12316		Reinforcement Bar	
16	726-0135		Push Nut 5/16" Rod						
17	12395		Chute Door—Upper Half						

\*For faster service obtain standard nuts and bolts locally. If these items cannot be obtained locally, order by part number and size as shown on the parts list.

(462—Red Flake) When ordering parts, if color or finish is important, use the appropriate color code shown at left. (e.g. Red Flake Finish 12610 (462).)

The engine is not under warranty by the mower manufacturer. If repairs or service is needed on the engine, please contact your nearest authorized engine service outlet. Check the "Yellow Pages" of your telephone book under "Engines—Gasoline."

Find It Fast  
In The  
**'Yellow Pages'**



# PARTS INFORMATION

**DEFECTIVE OR MISSING PARTS** must be reported to the factory immediately. Such claims must include your model number and date of purchase.

## POWER EQUIPMENT PARTS AND SERVICE

Parts and service for all MTD manufactured power equipment are available through the authorized service firms listed below. All orders should specify the model number of your unit, parts numbers, description of parts and the quantity of each part required.

## BRIGGS & STRATTON, TECUMSEH AND PEERLESS PARTS AND SERVICE

Briggs & Stratton, Tecumseh and Peerless parts and service should be handled by your nearest authorized engine service firm. Check the yellow pages of your telephone directory under the listing *Engines — Gasoline*, Briggs & Stratton or Tecumseh Lauson — Power Products.

**A 1 Engine & Mower Co.**  
327 East 9th Street  
Salt Lake City, Utah 84102

**Auto Electric & Carburetor Co.**  
2525 4th Avenue, S.  
P. O. Box 1948  
Birmingham, Alabama 35233

**Automotive Equipment Service Co.**  
3117 Holmes Street  
Kansas City, Missouri 64109

**Bailey's Rebuild Inc.**  
1325 E. Madison Street  
Seattle Washington 98102

**Bleckie, Inc.**  
7900 Lorain Avenue  
Cleveland, Ohio 44102

**Brown Equipment Distributor Inc.**  
110 Beech Street  
Corydon, Indiana 47112

**Bullard Supply**  
2409 Commerce Street  
Houston, Texas 77003

**Catto & Putty, Inc.**  
P. O. Box 2408  
510 Soledad Street  
San Antonio, Texas 78205

**Center Supply Company**  
6867 New Hampshire Avenue  
Takoma Park, Maryland 20012

**Dixie Sales Company**  
P. O. Box 1408  
327 Battleground Avenue  
Greensboro, North Carolina 27402

**East Point Cycle & Key Shop**  
1617 Whiteway  
East Point, Georgia 30044

**Gamble Distributors**  
West End Avenue  
Carthage, New York 13619

**Garden Equipment Co., Inc.**  
6600 Cherry Avenue  
Long Beach, California 90805

**Gardenville Supply, Inc.**  
Pipersville, Pennsylvania 18947

**Henry W. O'Neil & Assoc., Inc.**  
410 North Goodman Street  
Rochester, New York 14609

**Henzler, Inc.**  
2015 Lemay Ferry Road  
St. Louis, Missouri 63125

**Kenton Supply**  
8216 North Denver Avenue  
Portland, Oregon 97217

**Kimber's Inc.**  
115 W. Geddes St.  
Syracuse, New York 13204

**Marr Brothers**  
423 E. Jefferson  
Dallas, Texas 75203

**McClure Lawn & Garden Supply**  
1114 Lexington Avenue  
Mansfield, Ohio 44907

**Memphis Cycle & Supply Co.**  
421 Monroe Avenue  
Memphis Tennessee 38103

**Morton B. Collins Co.**  
300 Birnie Avenue  
Springfield, Massachusetts 01107

**Moz-All of Florida, Inc.**  
365 Greco Avenue  
Coral Gables, Florida 33146

**National Central**  
687 Seville Rd.  
Wadsworth, Ohio 44281

**Parts & Sales Inc.**  
2101 Industrial Pkwy.  
Elkhart, Indiana 46514

**Power Equipment Distributor**  
36463 So. Gratiot Avenue  
Mt. Clemens, Michigan 48043

**Power Lawn & Garden Equip. Co.**  
2551-2571 J. F. Kennedy Road  
Dubuque, Iowa 52001

**Radco Distributors**  
2403 Market Street  
P. O. Box 3216  
Jacksonville, Florida 32206

**Raub Supply Company**  
James & Mulberry Sts.  
Lancaster, Pennsylvania 17604

**Richmond Battery & Ignition**  
P. O. Box 25369 — 957 Myers St.  
Richmond, Virginia 23260

**R. P. W., Inc.**  
623 S. 16th Street  
Omaha, Nebraska 68102

**Smith Hardware Company**  
515 N. George Street  
Goldsboro, North Carolina 27530

**South Denver Lawn Equip. Co.**  
527 West Evans  
Denver, Colorado 80223

**Suhren Engine**  
8330 Earhart Blvd.  
New Orleans, Louisiana 70118

**Sutton's Lawn Mower Shop**  
Route 4, Box 343  
North Little Rock, Arkansas 72117

**Warner Equipment**  
7520 Lyndale Avenue, So.  
Minneapolis, Minnesota 55423

**Woodson Sales & Service**  
1702 North Sylvania  
Ft. Worth, Texas 76111

## WARRANTY PARTS AND SERVICE POLICY

The purpose of warranty is to protect the customer from defects in workmanship and materials, defects which are NOT detected at the time of manufacture. It does not provide for the unlimited and unrestricted replacement of parts. Use and maintenance are the responsibility of the customer. The manufacturer cannot assume responsibility for conditions over which it has no control. Simply put, if it's the manufacturer's fault, it's the manufacturer's responsibility; if it's the customer's fault, it's the customer's responsibility.

### CLAIMS AGAINST THE MANUFACTURER'S WARRANTY INCLUDES

1. Replacement of Missing Parts on new equipment.
2. Replacement of Defective Parts within the warranty period.
3. Repair of Defects within the warranty period.

All claims MUST be substantiated with the following information:

1. Model Number of unit involved.
2. Date unit was purchased or first put into service.
3. Date of failure.
4. Nature of failure.