

5. Touchpad Reader Operation

5.1 Operation

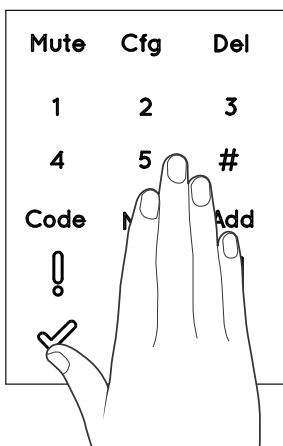
To turn the Touchpad Reader **ON** press [#] for 5 seconds. The reader will perform a self test followed by series of beeps. LED blinks Green, Red, Blue.

5.2 Pairing Touchpad Reader

This procedure is done via the ENTR® lock. See also: Pairing Remote Control.

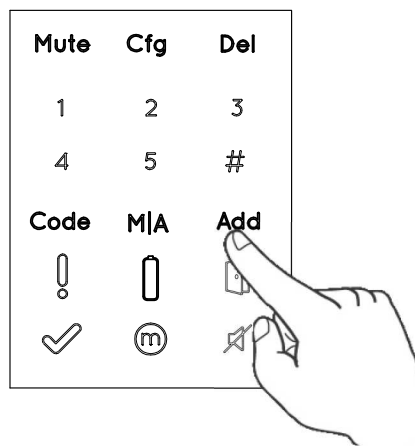
1

Touch **ENTR® lock** screen with palm or fingers for 3 seconds to active.



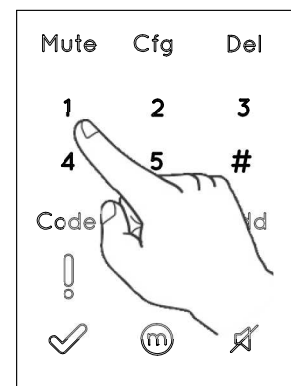
2

Press **[Add]**



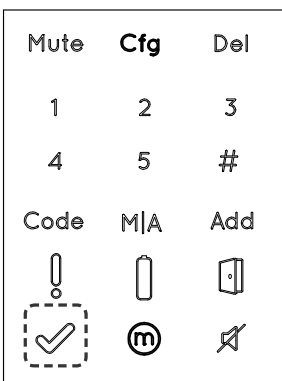
3

Numeric buttons illuminated.
Type **[PIN code]** → **[#]**
Numeric buttons blinking.



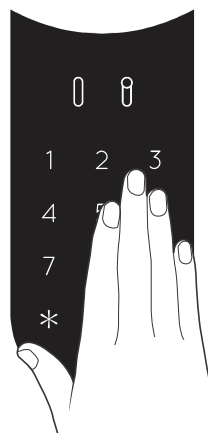
4

Press **[1]** to add Touchpad.
Illuminated buttons turn off.
[OK] indication blinks for 15 seconds waiting for the Touchpad.









5

Touch the **Touchpad Reader** screen with palm or fingers.
Press **[77]** → **[#]**
Blue LED blinking rapidly.



Pairing OK

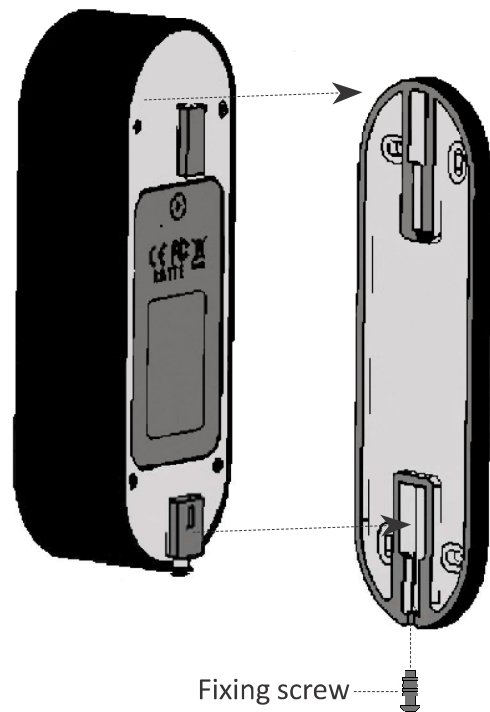
[OK] indication blinks once,
2 short beeps emitted.
Touchpad Reader added.

Mute	Cfg	Del
1	2	3
4	5	#
Code	M/A	Add
		
		

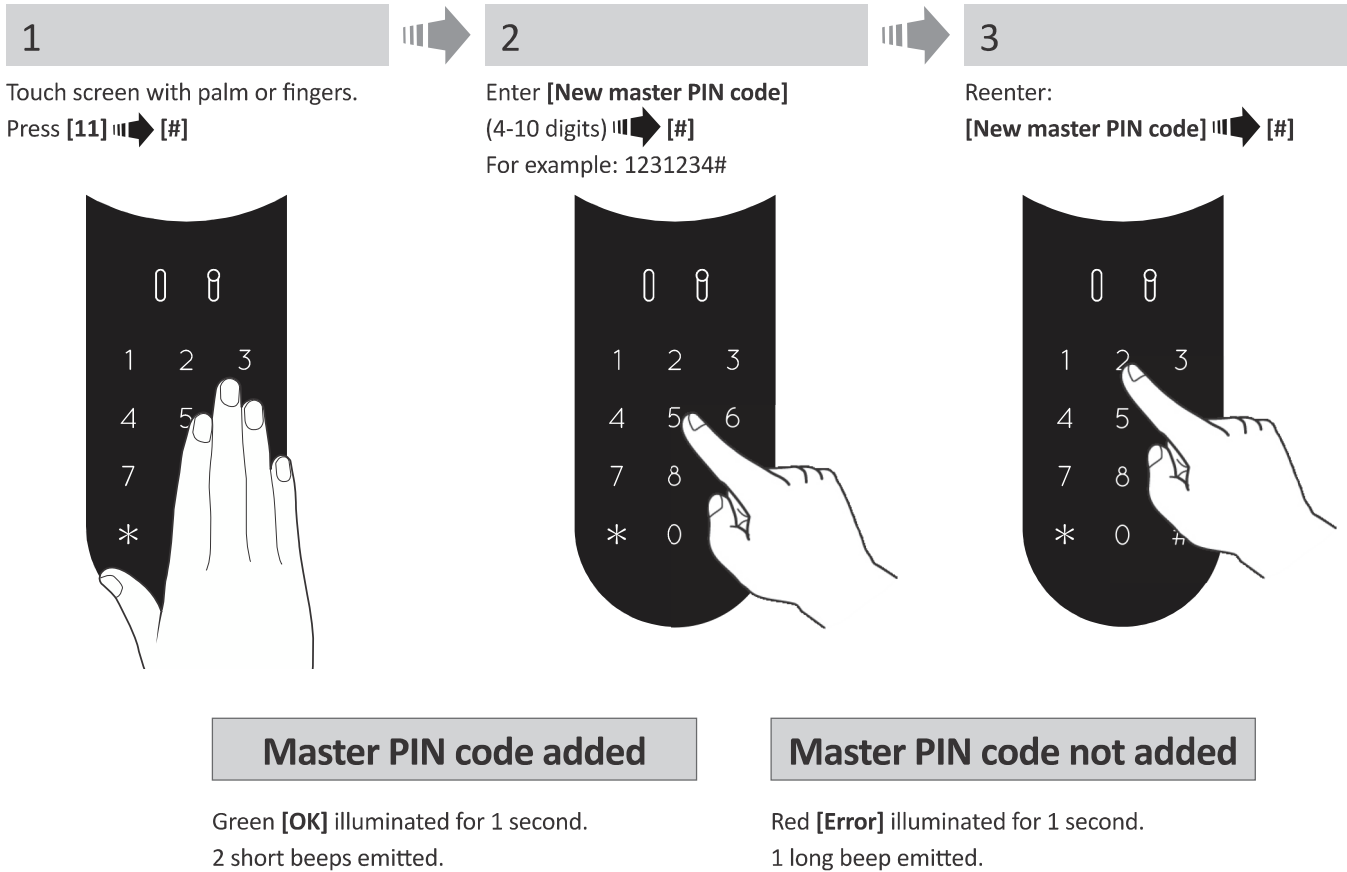
Pairing failed

[OK] indication blinks for 15 seconds,
No beeps emitted.
In wall reader: Green LED illuminated
and 2 beeps emitted.
Start the process from stage 1.

- Hang the Touchpad Reader on the base plate.
- Tighten fixing screw.



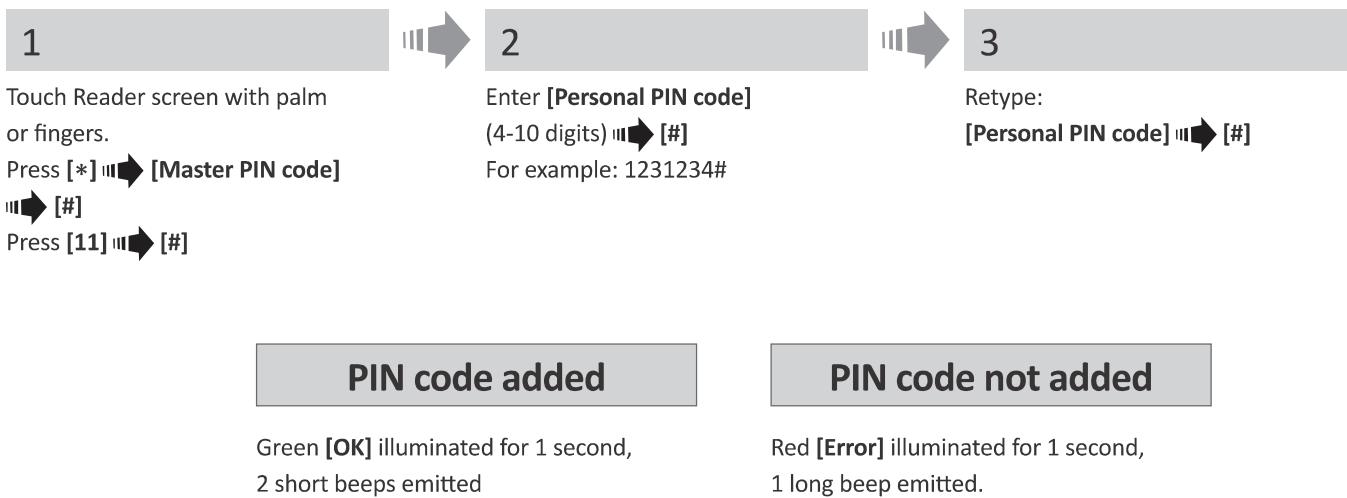
5.3 Touchpad Reader Master PIN Code



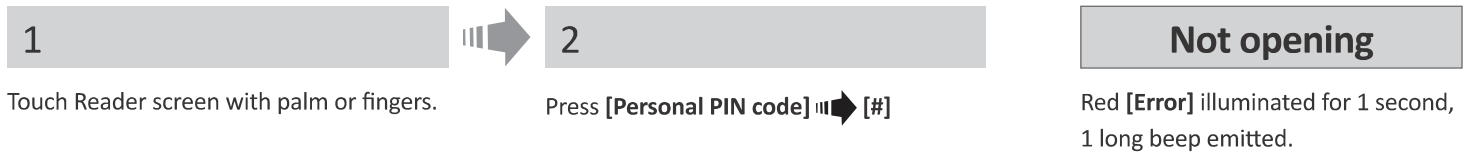
5.4 Menu Mode

Entering menu mode: Press [*] then [Master PIN code] then [#]

5.5 Adding PIN Code (up to 20 different codes)



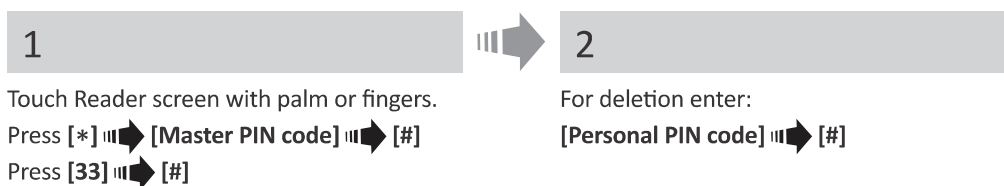
5.6 Open Door



5.7 Lock Door



5.8 Delete PIN Code



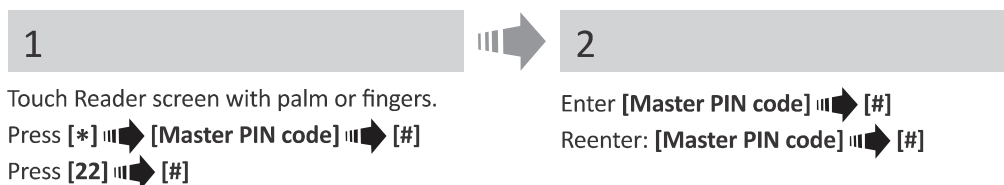
Personal code deleted

Green [OK] illuminated for 1 second,
2 short beeps emitted.

Personal code not deleted

Red [Error] illuminated for 1 second,
1 long beep emitted.

5.9 Delete all PIN Codes



Personal PIN codes deleted

Green [OK] illuminated for 1 second,
2 short beeps emitted.
Note: Master PIN code can not be deleted.

Personal PIN codes not deleted

Red [Error] illuminated for 1 second,
1 long beep emitted.

5.10 Volume Control

1

Touch Reader screen with palm or fingers.
Press [*] → [Master PIN Code] → [#]
Press [55] → [#]



2

Press [2] to increase the volume, or [8] to decrease the volume.
Press [#] to confirm volume level.

5.11 Factory Reset

The reset action will delete **all** PIN codes (master and personal) and will cut off the Touchpad Reader from the ENTR® lock.

1

Touch Reader screen with palm or fingers.
Press [*] → [Master PIN code] → [#]
Press [99] → [#]



2

Enter [Master PIN code] → [#]

Personal and master PIN codes deleted

Green [OK] illuminated for 1 second.
2 short beeps emitted.
Device performing self test & is factory reset.

Personal and master PIN codes not deleted

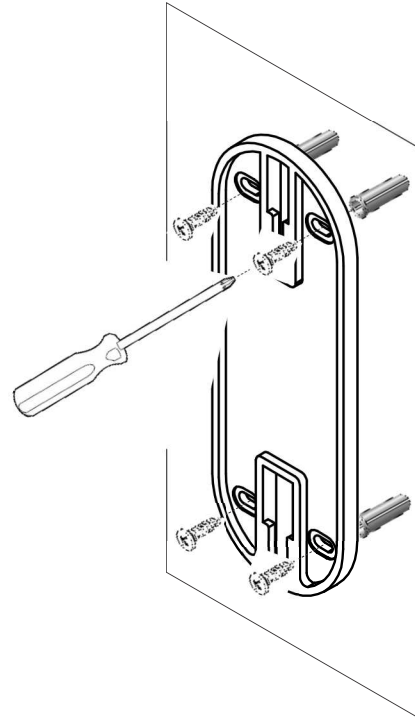
Red [Error] illuminated for 1 second.
1 long beep emitted.

6. Fingerprint Reader

6.1 Mounting the Fingerprint Reader

Prior to starting, select the location where the Fingerprint Reader is to be mounted. Avoid direct sun light to the front panel.

- Attach the Fingerprint Reader base plate to the wall.
- Use 4 screws and screw anchors or double sided glued tape.



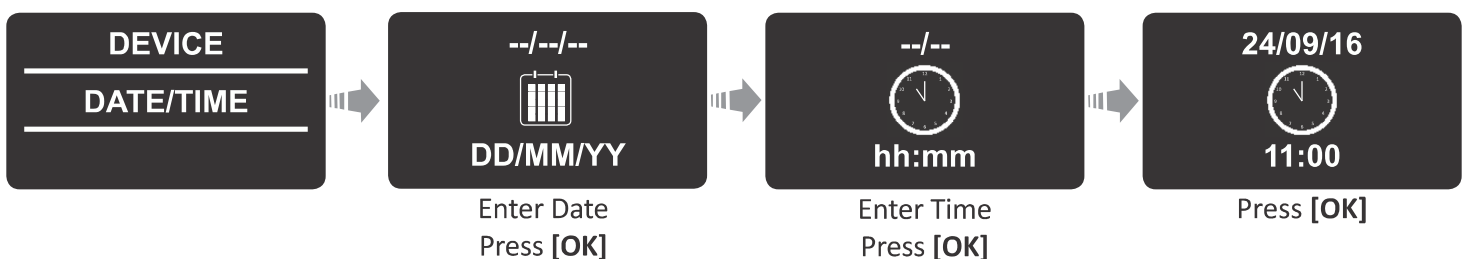
6.2 Battery Replacement

1. Using a 2mm Allen key release the lid screw and open the lid.
2. Insert batteries (2xAA) according to the "+" "-" signs. Green LED will illuminate for 2 seconds.
3. Close the lid and tighten the screw.
4. Press [#] for 5 seconds.



The reader will self calibrate, which will be followed by a series of beeps and blinking LEDs.

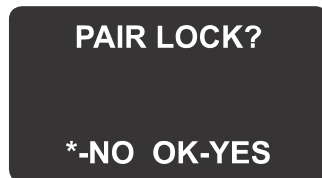
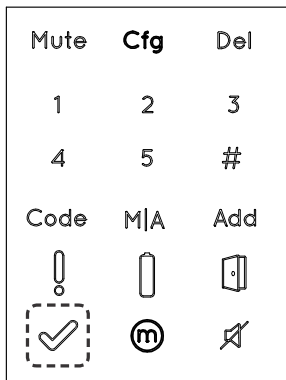
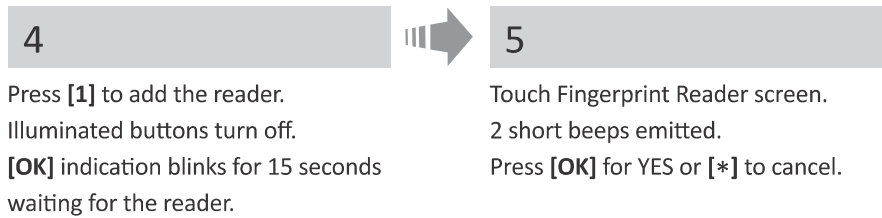
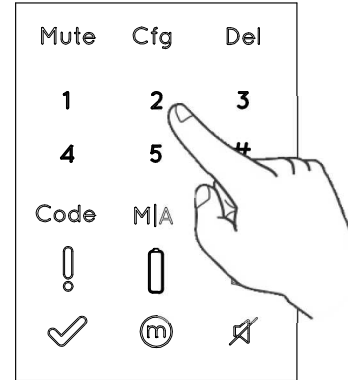
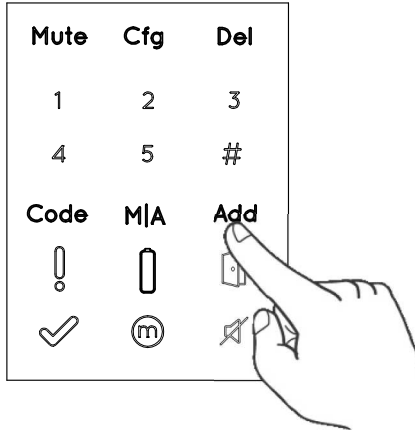
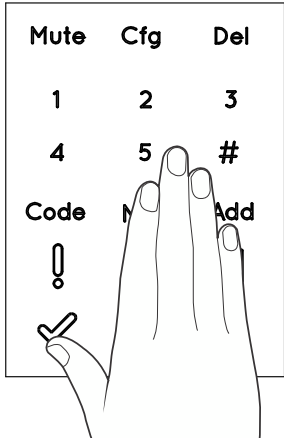
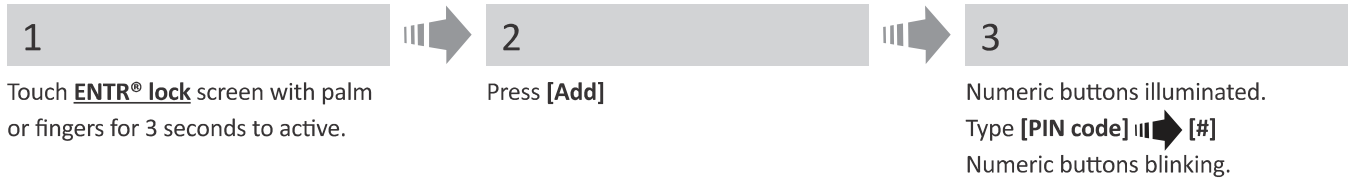
6.3 Adjust Date & Time



6.4 Pairing Fingerprint Reader

This procedure is done via the ENTR® lock.

See also: Pairing Touchpad Reader.



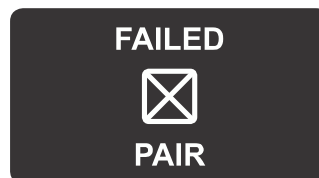
Pairing OK

[OK] indication blinks once.
2 short beeps emitted.
Fingerprint Reader added.

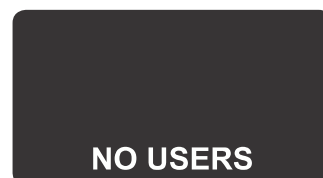


Pairing failed

1 long beep emitted.
Red LED illuminated for 2 seconds.



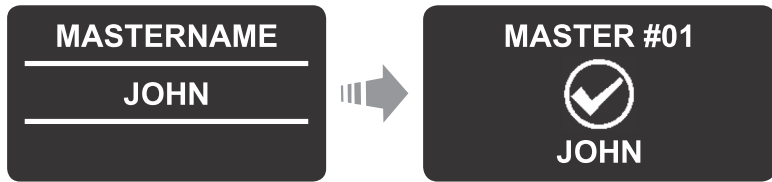
Note: At the end of the initial pairing process, a short notice will be displayed.



6.4.1 Add Master User

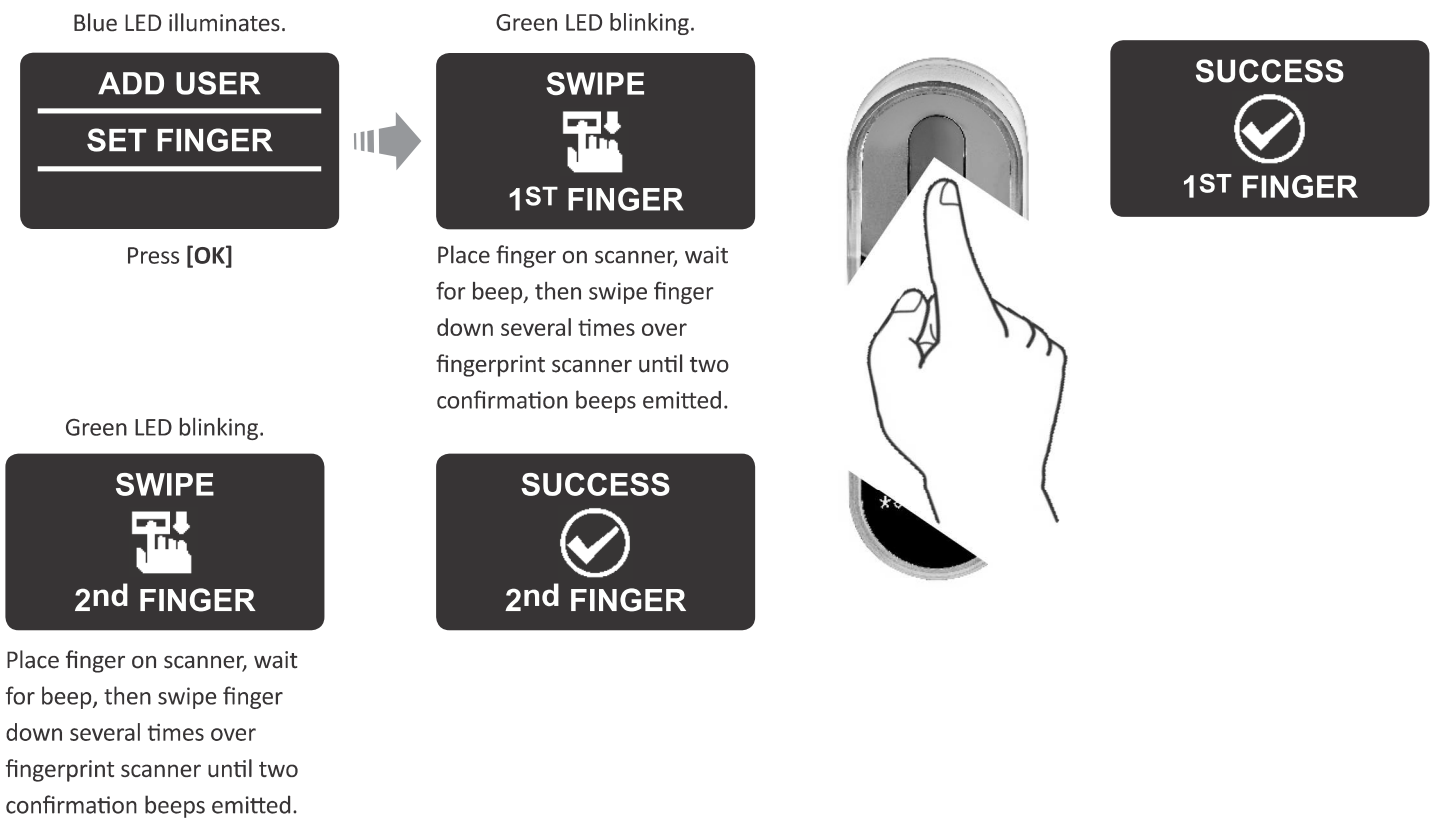
Setting a Master User requires both fingerprint and PIN code. It is possible to have up to two Master Users.

Note: At any stage you can press and hold the [*] key to move to standby mode.

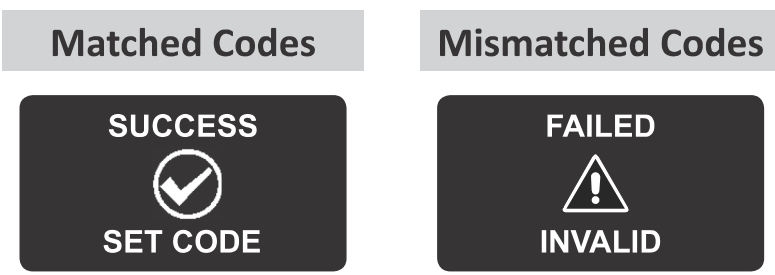
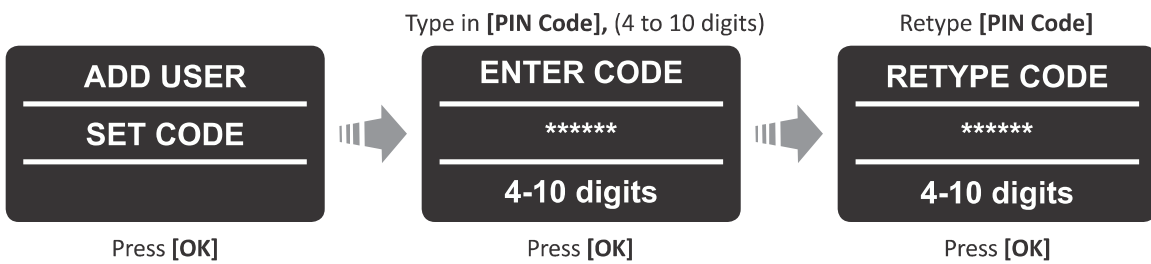


Type in [Master name] [OK]

6.4.2 Set Finger



6.4.3 Set PIN Code



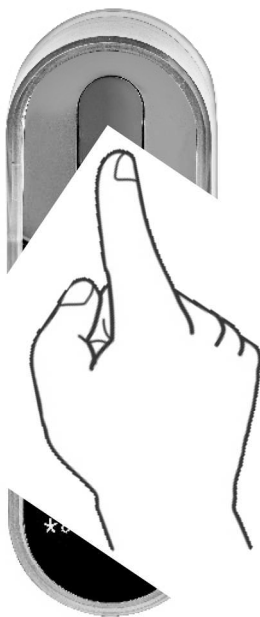
- Hang the reader on the base plate.
- Tighten fixing screw.




6.5 Unlock the Door

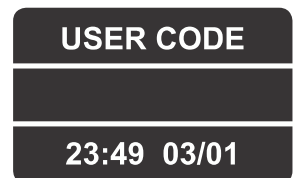
OPTION 1:

Place finger on fingerprint scanner.
 Short beep emitted & white LED is on.
 Swipe finger over fingerprint scanner
Fingerprint authorized: Blue LED blinking and unlock command is sent.
Fingerprint not authorized: Red LED is ON.
 The device goes to standby.



OPTION 2:

Touch the Fingerprint Touchpad.
 Screen shows user code.
 Enter your code  **[OK]**



Note: In case ENTR® lock hasn't succeed to unlock the door, unlock failed message appear on the screen.



6.6 Lock the Door

Touch the Fingerprint Touchpad.

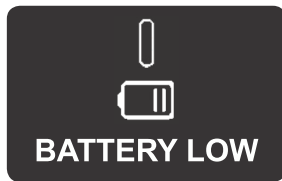
Press [1] → [#]

6.7 Low Battery Indication

Warning signal blinking.

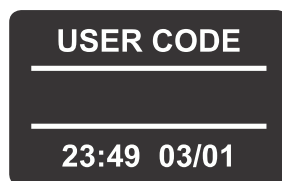
Fingerprint Reader low battery indication

Red LED illuminate for 1s after wake-up,
2 long beeps emitted.



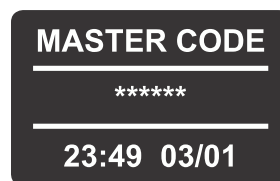
6.8 Setting Menu

Touch screen →



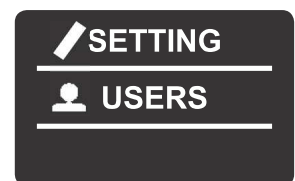
Press [*]

→



Enter [Master PIN code] → [OK] or
swipe finger over fingerprint scanner

→



6.9 Add User

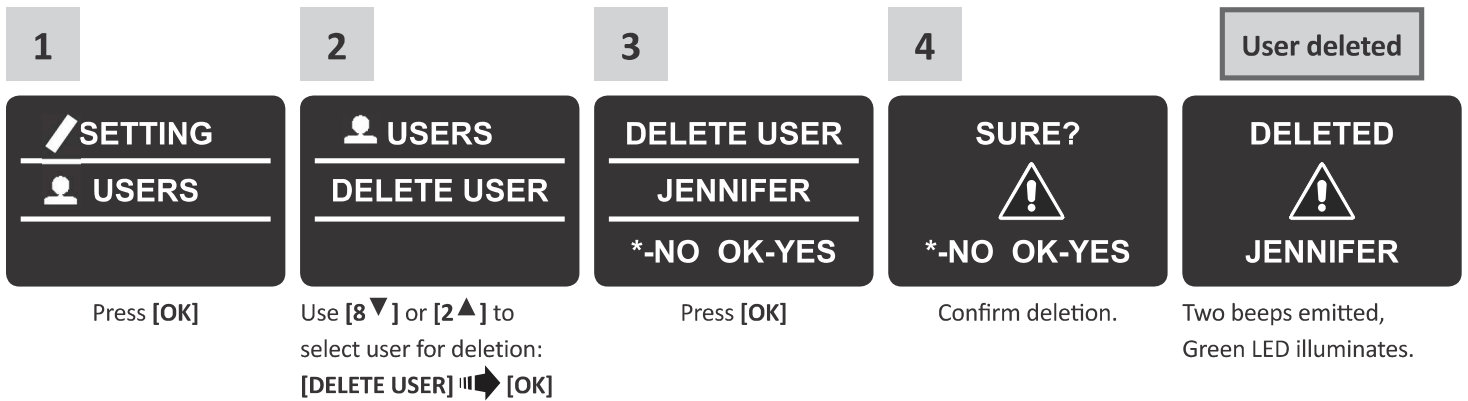
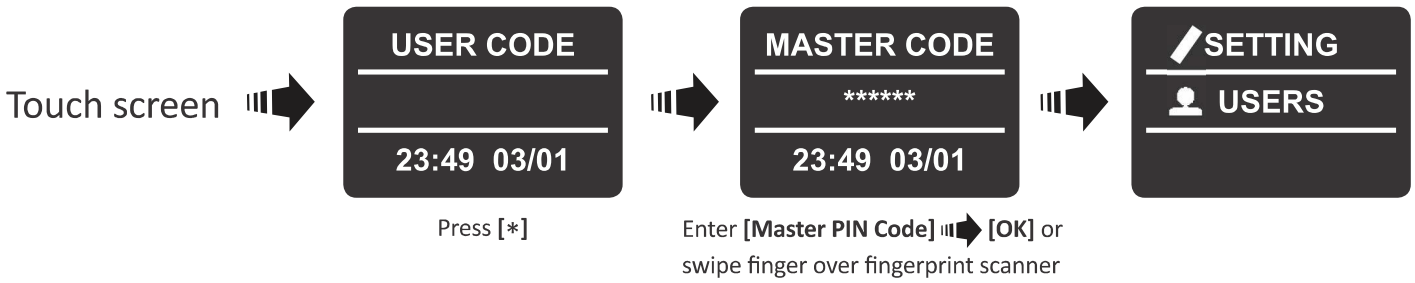
The unit allows adding up to 20 users. For each user two different fingerprints and one PIN code. Use different user name for each user.

1	2	3	4	User name added
Press [OK]	Press [OK]	Choose [OK] to add 2nd Master User or [*] to add a user. Note: This screen will not appear if two Master Users are defined.	User name added.	Type [USER NAME] [OK]
User name exist	5	6	1st finger added	7
Same user name. Choose different user name.	Press [OK] to set a finger or use [8▼] or [2▲] in order to set a code only.	Swipe 1st finger several times over fingerprint scanner until two confirmation beeps emitted.	Swipe 2nd finger several times over fingerprint scanner until two confirmation beeps emitted.	
2nd finger added	8	9	10	
	Press [OK] for YES or [*] for NO.	Type [CODE] [OK]	Retype [CODE] [OK]	

Matched codes	Mismatched codes

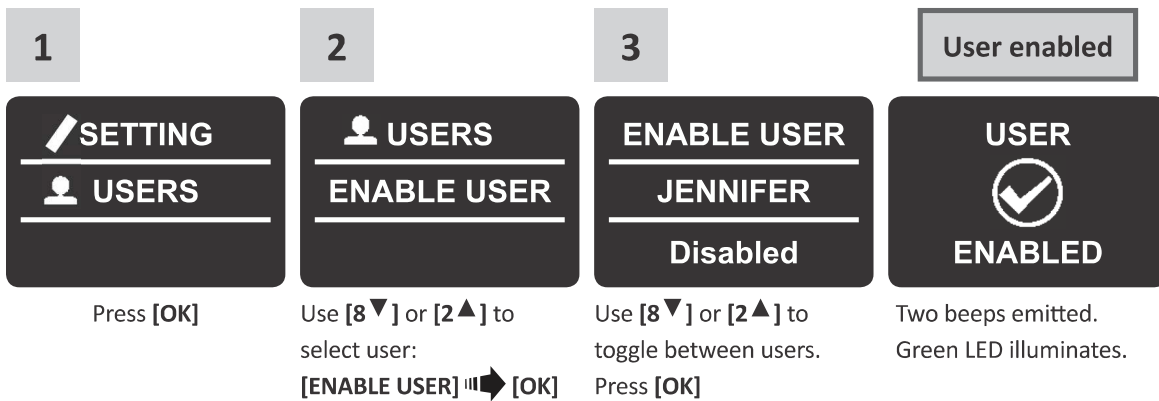
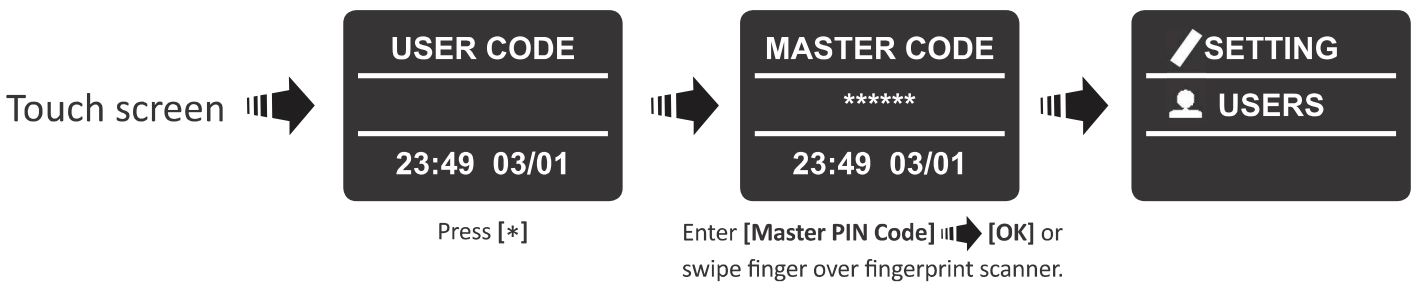
Process did not complete. All data typed in will be erased from memory.

6.10 Delete User



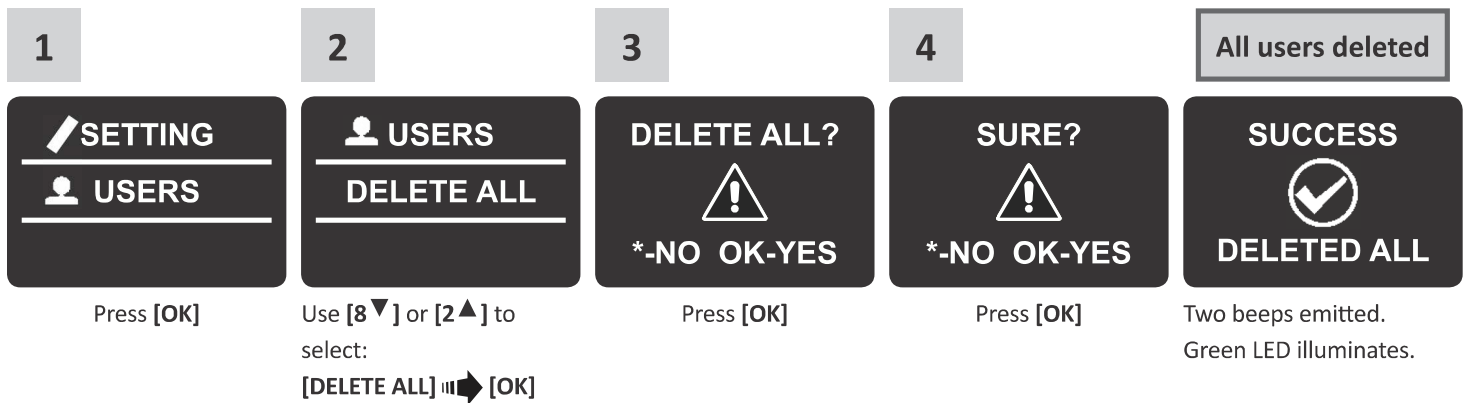
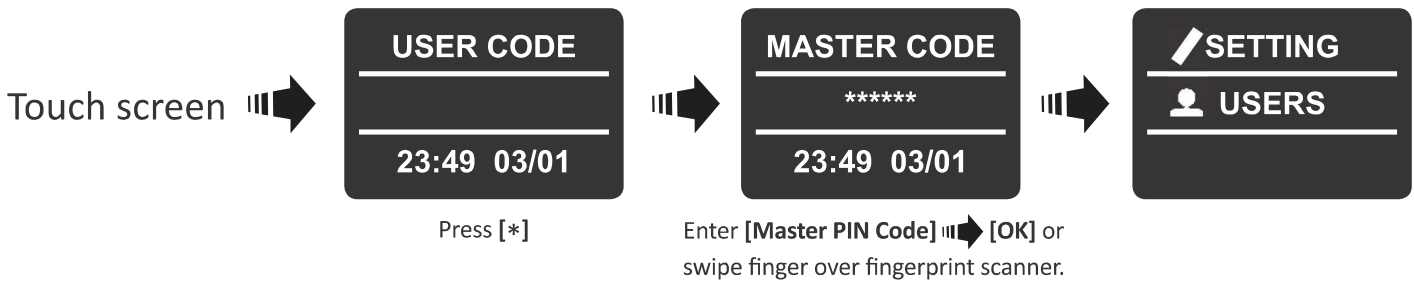
Note: The first Master User can't be deleted without doing a factory reset.

6.11 Enable/Disable User

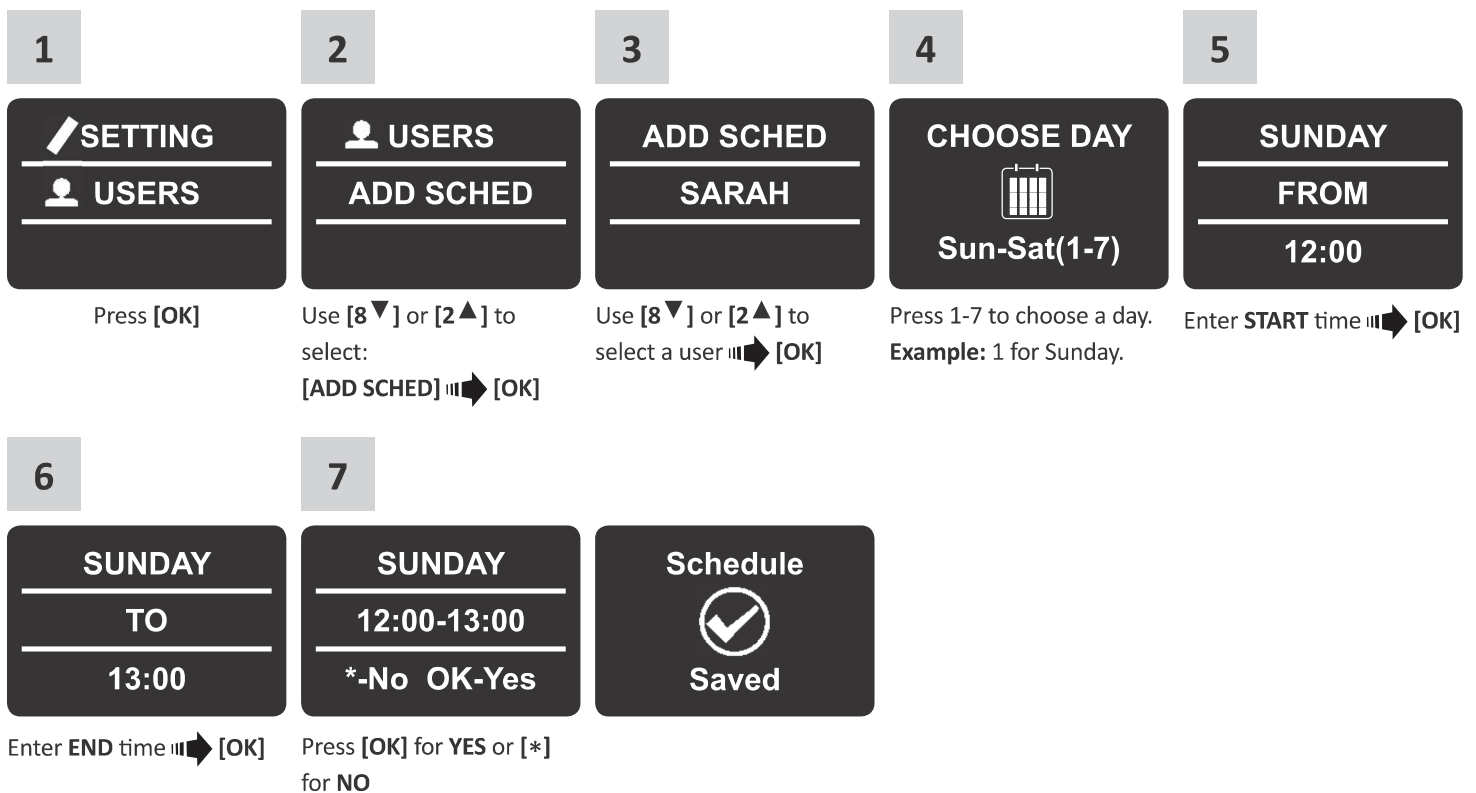


Note: Repeat this procedure to disable a user.

6.12 Delete All Users



6.13 Add Time Schedule



Notes:

1. Define up to 7 different time schedules for the same user.
2. Press [*] to go back on every menu.
3. Press [*] for 3 seconds to exit setting menu.

6.14 Edit Time Schedule

<div style="background-color: #ccc; padding: 2px; width: 30px; margin: 0 auto;">1</div> <div style="background-color: #333; color: white; padding: 10px; text-align: center; margin: 5px;"> SETTING <hr/> USERS </div> <p>Press [OK]</p>	<div style="background-color: #ccc; padding: 2px; width: 30px; margin: 0 auto;">2</div> <div style="background-color: #333; color: white; padding: 10px; text-align: center; margin: 5px;"> USERS <hr/> EDIT SCHED </div> <p>Use [8 ▼] or [2 ▲] to select: [EDIT SCHED] → [OK]</p>	<div style="background-color: #ccc; padding: 2px; width: 30px; margin: 0 auto;">3</div> <div style="background-color: #333; color: white; padding: 10px; text-align: center; margin: 5px;"> EDIT SCHED <hr/> SARAH </div> <p>Use [8 ▼] or [2 ▲] to toggle between users → [OK]</p>	<div style="background-color: #ccc; padding: 2px; width: 30px; margin: 0 auto;">4</div> <div style="background-color: #333; color: white; padding: 10px; text-align: center; margin: 5px;"> SUNDAY <hr/> 12:00-13:00 <hr/> *-Back OK-Yes </div> <p>Use [8 ▼] or [2 ▲] to choose the desired schedule to be edited. Pressing on [4 ◀] for 3 seconds shall delete the specific schedule.</p>	<div style="background-color: #ccc; padding: 2px; width: 30px; margin: 0 auto;">5</div> <div style="background-color: #333; color: white; padding: 10px; text-align: center; margin: 5px;"> FRIDAY <hr/> 12:00-13:00 <hr/> ▼ DAY ▲ </div> <p>Use [8 ▼] or [2 ▲] to change schedule day → [OK]</p>
<div style="background-color: #ccc; padding: 2px; width: 30px; margin: 0 auto;">6</div> <div style="background-color: #333; color: white; padding: 10px; text-align: center; margin: 5px;"> FRIDAY <hr/> 11:00-13:00 <hr/> --:mm-HH:MM </div> <p>Use [8 ▼] or [2 ▲] to change the START hour setting. Use [6 ▶] to move to START minutes.</p>	<div style="background-color: #ccc; padding: 2px; width: 30px; margin: 0 auto;">7</div> <div style="background-color: #333; color: white; padding: 10px; text-align: center; margin: 5px;"> FRIDAY <hr/> 12:15-13:00 <hr/> HH:--HH:mm </div> <p>Use [8 ▼] or [2 ▲] to change START minutes setting. Use [6 ▶] to move to the END hour.</p>	<div style="background-color: #ccc; padding: 2px; width: 30px; margin: 0 auto;">8</div> <div style="background-color: #333; color: white; padding: 10px; text-align: center; margin: 5px;"> FRIDAY <hr/> 12:15-17:00 <hr/> HH:mm--:mm </div> <p>Use [8 ▼] or [2 ▲] to change END hour setting. Use [6 ▶] to move to the END minutes.</p>	<div style="background-color: #ccc; padding: 2px; width: 30px; margin: 0 auto;">9</div> <div style="background-color: #333; color: white; padding: 10px; text-align: center; margin: 5px;"> FRIDAY <hr/> 12:15-17:45 <hr/> HH:mm-HH:-- </div> <p>Use [8 ▼] or [2 ▲] to change END minutes setting.</p>	<div style="background-color: #ccc; padding: 2px; width: 30px; margin: 0 auto;">10</div> <div style="background-color: #333; color: white; padding: 10px; text-align: center; margin: 5px;"> FRIDAY <hr/> 12:15-17:45 <hr/> *-NO OK-Yes </div> <p>Press [OK] for YES or [*] for NO.</p>

6.15 Volume Control

Touch screen →

USER CODE

23:49 03/01

MASTER CODE

23:49 03/01

SETTING

USERS

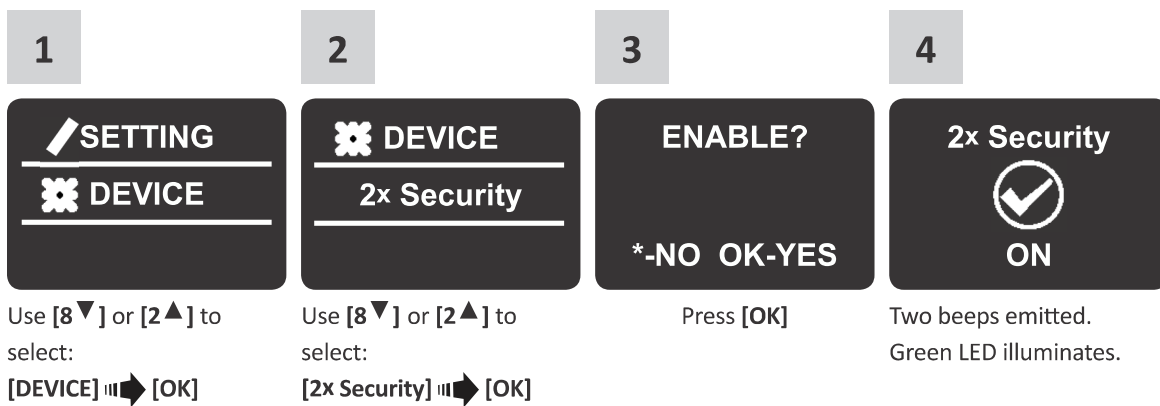
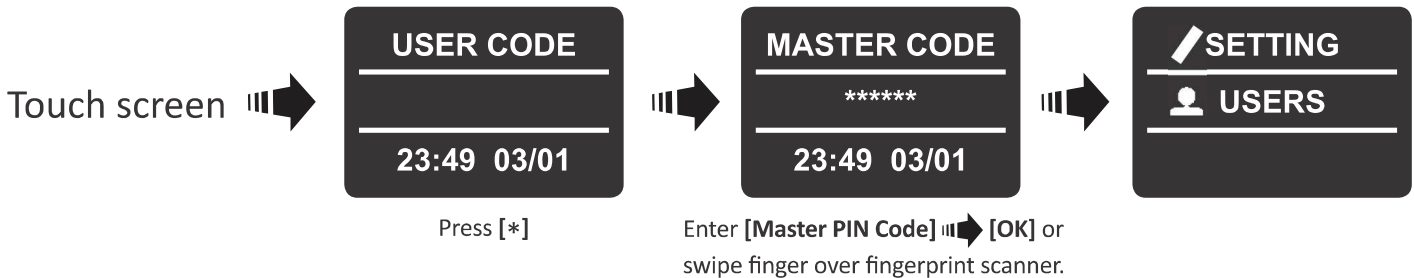
Press [*] Enter [Master PIN Code] → [OK] or swipe finger over fingerprint scanner.

<div style="background-color: #ccc; padding: 2px; width: 30px; margin: 0 auto;">1</div> <div style="background-color: #333; color: white; padding: 10px; text-align: center; margin: 5px;"> SETTING <hr/> DEVICE </div> <p>Use [8 ▼] or [2 ▲] to select: [DEVICE] → [OK]</p>	<div style="background-color: #ccc; padding: 2px; width: 30px; margin: 0 auto;">2</div> <div style="background-color: #333; color: white; padding: 10px; text-align: center; margin: 5px;"> DEVICE <hr/> VOLUME </div> <p>Use [8 ▼] or [2 ▲] to select: [VOLUME] → [OK]</p>	<div style="background-color: #ccc; padding: 2px; width: 30px; margin: 0 auto;">3</div> <div style="background-color: #333; color: white; padding: 10px; text-align: center; margin: 5px;"> VOLUME <hr/> HIGH </div> <p>Use [8 ▼] or [2 ▲] to toggle between HIGH, MEDIUM or LOW.</p>	<div style="background-color: #ccc; padding: 2px; width: 30px; margin: 0 auto;">4</div> <div style="background-color: #333; color: white; padding: 10px; text-align: center; margin: 5px;"> VOLUME <hr/> LOW </div> <p>Press [OK]</p>	<div style="background-color: #333; color: white; padding: 10px; text-align: center; margin: 5px;"> SUCCESS <hr/> SET VOLUME </div> <p>Two beeps emitted. Green LED illuminates.</p>
---	--	--	--	---

6.16 Double Security

After activating the double security option use both methods - swiping a fingerprint and inserting a PIN code to unlock the door.

Note: User set up with only one of the settings (fingerprint or PIN code) will not be able to unlock the door.



6.17 Factory Reset

Warning: A factory reset action will delete all information stored in the memory, including users and paired locks.

