

MyHD

MDP-100

User's Guide

version 0.9

May, 2001

HDTV PC Card

Enjoy digital life with your PC



Macro Image Technology

FCC INFORMATION TO THE USER

This equipment has been tested and found to comply with the limits for a Class B digital device, pursuant to part 15 of the FCC Rules. These limits are designed to provide reasonable protection against harmful interference in a residential installation. This equipment generates, uses and can radiate radio frequency energy and, if not installed and used in accordance with the instructions, may cause harmful interference to radio communications. However, there is no guarantee that interference will not occur in a particular installation. If this equipment does cause harmful interference to radio or television reception, which can be determined by turning the equipment off and on, the user is encouraged to try to correct the interference by one more of the following measures:

- . Reorient or relocate the receiving antenna.
- . Increase the separation between the equipment and receiver.
- . Connect the equipment into an outlet on a circuit different from that to which the receiver is connected.
- . Consult the dealer or an experienced radio/TV technician for help.

WARNING

Changes or modifications not expressly approved by the manufacturer could void the user's authority to operate the equipment.

Contents

1. System Requirements	1
1.1 PC Platform Requirements	1
2. Hardware Installation	1
2.1 Installation overview	1
2.2 Install MyHD card	2
2.3 Connect the Cables	3
2.4 Connecting the MyHD board to a Sound Card	4
2.5 Install the MyHD driver for Windows	5
3. Quick Troubleshooting Guide	7
4. MyHD Application	8
4.1 Application Installation	8
4.2 Check lists before running the MyHD	8
4.3 User Interface Description	9
4.4 Remote Controller	11
4.5 Channel Property Set	12
4.5.1 Auto Channel Scan	12
4.5.2 Change Channel Configure	12

4.5.3 Add/Remove Favorite Channel	-----	13
4.5 MyHD Environment Configuration	-----	14
4.5.1 AV Setup Tab	-----	14
4.5.2 VGA Setup Options	-----	16
4.7 Pop-up Controls	-----	17
4.8 Keyboard Shortcuts	-----	17

[blank]



1. SYSTEM REQUIREMENTS

To achieve optimum performance of the **MyHD** Board, your PC requires a minimum configuration.

This chapter provides the system requirements. This chapter contains the following sections:

1.1 PC Platform Requirements

The minimum requirements for you PC platform are listed below:

CPU : Pentium-II 333MHz or faster

DRAM : 64 Megabytes or Higher

System Bus : PCI

Operating System : Windows 98 Second Edition. , ME

Other Software : DirectX Media 6.0 Runtime

VGA : DirectX compatibility VGA card

(8 MB memory or higher recommended)

2. HARDWARE INSTALLATION

The **MyHD** boards are Plug-and-Play devices designed for Window 98SE and ME.

Plug-and-Play simplifies the installation and hardware setup of **MyHD** by having hardware settings assigned by Windows, instead of needing to set jumpers. This chapter describes how to install these boards and how the automated Plug-and-Play installation procedure works .

2.1 Installation overview

To install **MyHD** under Windows 98SE or ME, you will follow these steps:

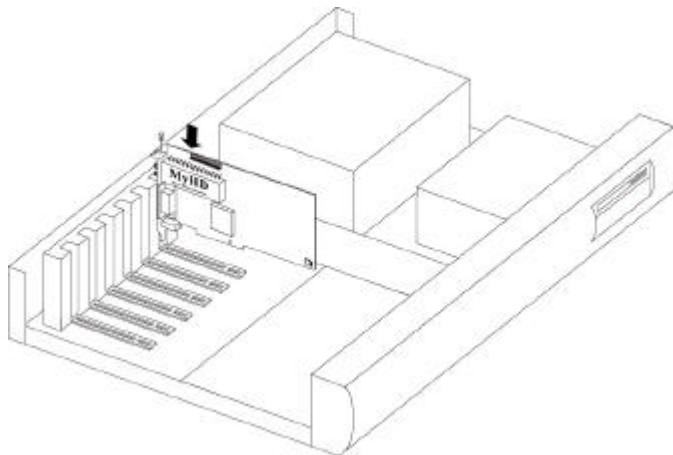
- Install the **MyHD board** in your PC
- After booting Windows, you will install **MyHD's** Windows device driver from the **MyHD Installation CD-ROM**
- After the Windows driver is installed, you will then install the **MyHD** application software from the **MyHD Installation CD-ROM**

- Finally, if necessary, an updated Windows Direct X Driver can be installed from the **MyHD Installation CD-ROM**

2.2 Install MyHD card

To install **MyHD** card, follow the steps listed below:

1. With the power off, remove your computer cover and locate an available PCI slot.
2. Remove the screw attached to the bracket cover and remove the bracket plate.
3. Before handling the **MyHD** DTVPC card, ground yourself by touching the power supply box inside your computer.
4. Position your card directly above the PCI slot and insert the card firmly into the slot. Care should be taken to press it evenly and snugly into its slot.
5. Once your **MyHD** DTVPC card is installed properly in its slot, secure it to the computer frame with the screw you removed in step 2.

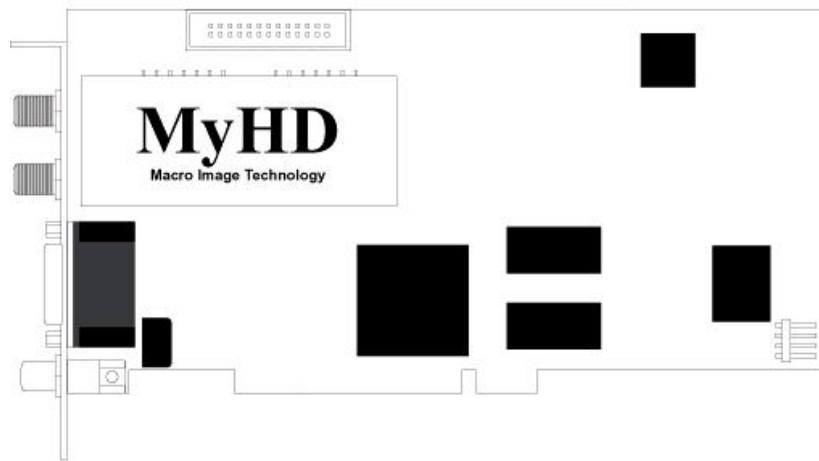


Warning - Static Sensitive Components

*To avoid possible damage to **MyHD** DTVPC card and/or other system components from static discharge always discharge your body's static electricity prior to handling **MyHD** DTVPC card or other system components.*

Discharging can be done either by using a properly grounded anti-static wrist strap or by simply touching the chassis of a grounded (plugged-in) computer. In addition, always handle the card by its edges whenever possible, to avoid mechanical damage to delicate components on the board.

The following diagram shows the main functions and connectors of the **MyHD** board. Since there are several different models with different features and functions, your board may not have all of the components installed.



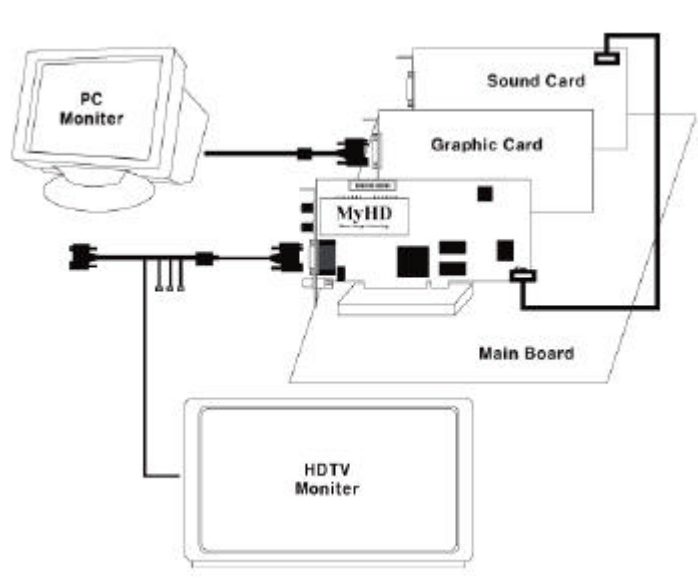
<Figure 2.1>

2.3 Connect the Cables

There are three basic cable configurations for **MyHD** : **Dual Monitor**, **Single Monitor**. The following subsections describe each operating configuration and their cabling connections.

Please refer to **A** if you have two monitors, otherwise refer to **B**.

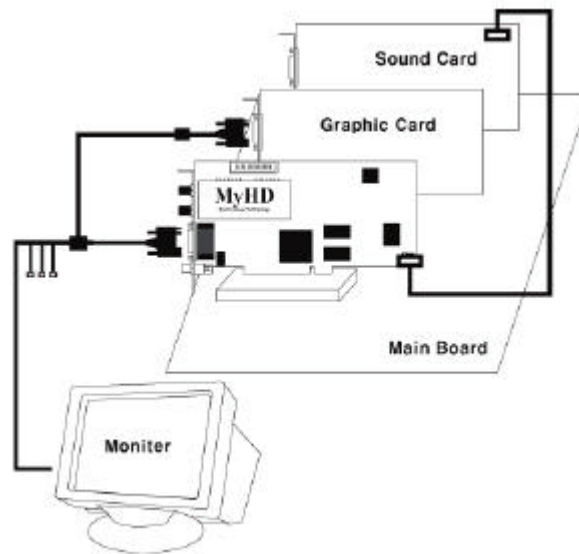
A. Dual Monitor Configuration



<Figure 2.2>

Figure 2.2 shows the dual-monitor configuration. Video output from the **MyHD** board is displayed on a separate HDTV or VGA monitor, without being mixed with VGA graphics. The HDTV display monitor used should be capable of receiving RGB(HV separate sync) type or YPbPr(sync on Y) type with support of following horizontal frequency: 33.7kHz(1920x1080 interlaced), 44.9kHz(1280x720 progressive), 31.5kHz(720x480 progressive), 48.3kHz(1024x768 progressive), 15.75kHz(720x480 interlaced).

B. Single Monitor Configuration



<Figure 2.3>

This configuration allows you to share a single monitor to display either VGA graphics or RGB video output by means of an analog switch. Figure 2.3 illustrates the cable connections used in this configuration. The VGA card display output is looped back into **MyHD** Board via its VGA loop-back input. An analog switch on the **MyHD** Board switches between the VGA loop-back input (default) and the **MyHD** HD video output.

2.4 Connecting the MyHD board to a Sound Card

The **MyHD** board's audio output should be connected to a sound card using the supplied Audio Cable, refer to the figure 2.2 or 2.3

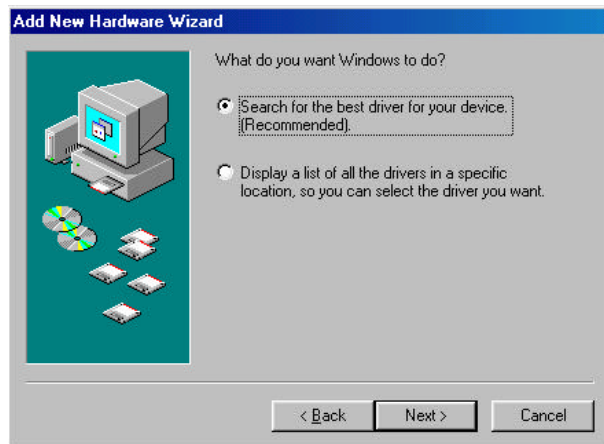
- Plug the other end of the Audio Cable into the LineIn port of your sound card.

2.5 Install the MyHD driver for Windows

1. When re-starting Windows for the first time after the **MyHD** board has been installed, the **Add New Hardware Wizard** will appear.
Click **NEXT**..



2. Select **Search for the best driver for your device (Recommended)**.
Click **NEXT**.



3. When you see this dialog box, insert the **MyHD Windows Installation CD-ROM** into your CD-ROM drive.

Select **“Specify a location”** and type **“D:\Driver”** or Browse the Driver irectory in your CD-ROM (Where **“D”** is the etter of your CD-ROM driver.)
click **NEXT**.

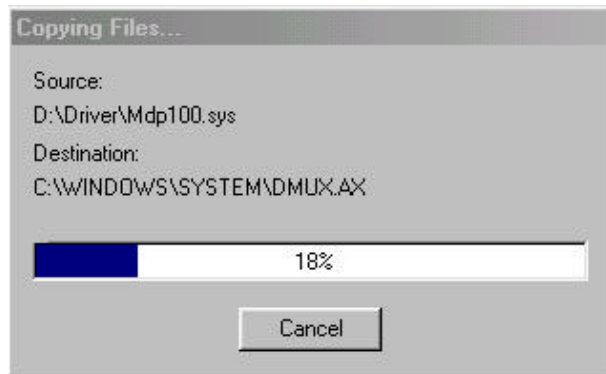


4. Once the **MyHD** video driver has been detected,
click **NEXT**

Note: If a message stating “Windows was unable to locate a driver for this device”, you did not wait long enough for the MyHD Installation CD-ROM to be read. Click Back and then click Next again for the CD to be recognized.



5. You will see a number of files being copied to your hard disk drive. If you receive an error message saying a file can not be found, browse to the Driver directory on the **MyHD** Windows Installation CD-ROM or Windows CD-ROM for these files.



6. Click **Finish** and Restart your computer.



3. QUICK TROUBLESHOOTING GUIDE

- **Incompatible motherboards**

We recommend the use of a motherboard with an Intel chipset because some other motherboards do not fully support the **MyHD**.

- **System lockups or error messages when running MyHD**

Some PCI cards may have interrupt conflicts with **MyHD**. To solve the problem, try with another PCI slot.

- **Poor TV reception**

Poor TV reception is generally the result of a weak TV signal. When using a roof-top antenna, an aerial booster may be required.

4. MYHD APPLICATION

4.1 Application Installation

To install the **MyHD** application software on your system, run the “setup.exe” program in the App subdirectory of your **MyHD** install CD. If you have copied the contents of this directory to hard disk, then install from there. During the software installation, you will be asked several questions. Answer “Yes” to all of these.

4.2 Check lists before running the MyHD

Please check the following steps for running the application of the MyHD

1. select **“Control Panel”**

select **“Display”** then select **“Screen Saver”**

click **“None”**

select **“settings”** under **“Energy saving features of monitor”**

select **“Always on(default)”** in **“Power Schemes”**

select **“Settings for Always On power scheme”** and click **“Never”** for all of three categories

2. select **“Control Panel”**

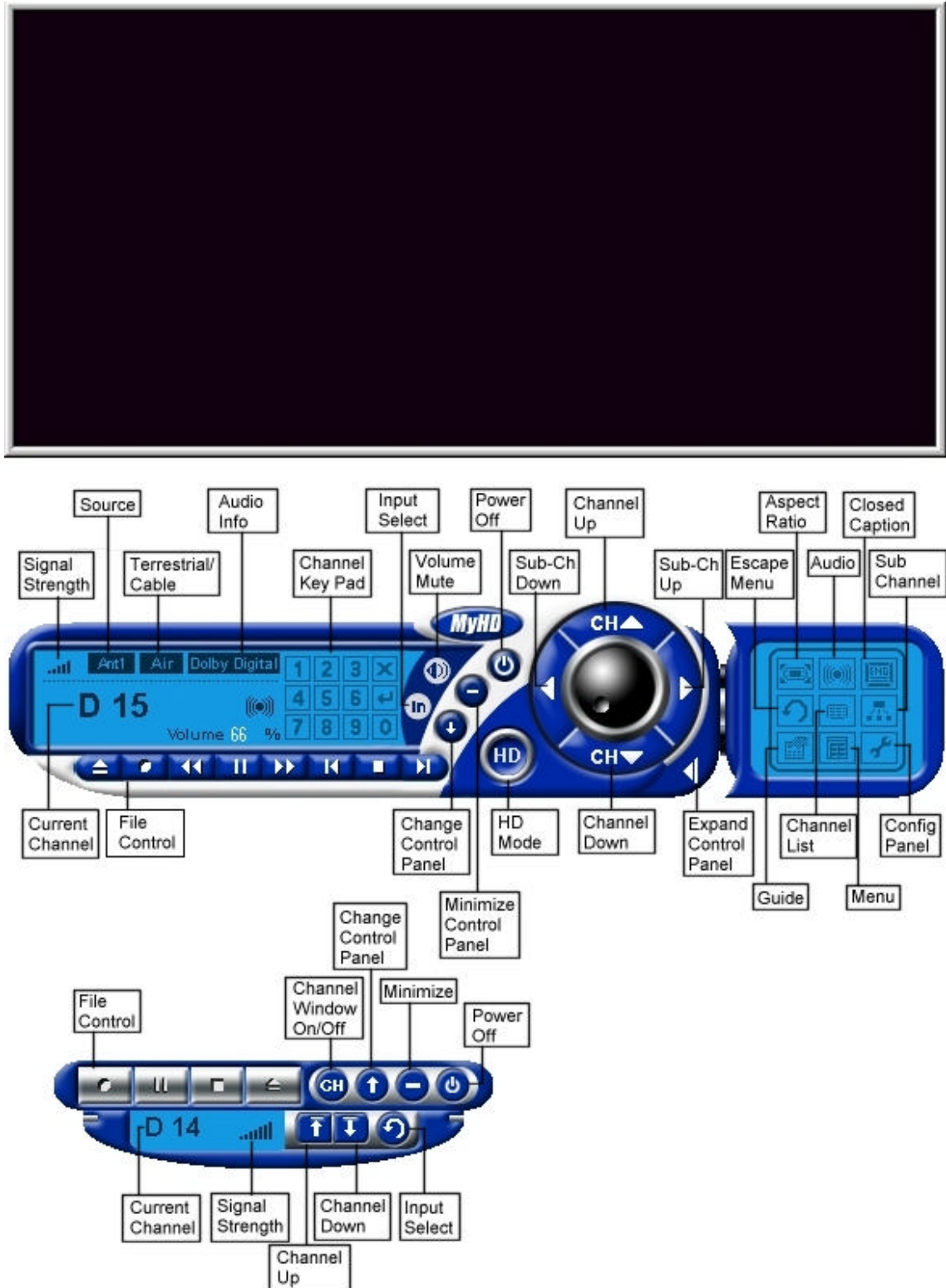
select **“Display/Settings”**

click **“Advanced”** then If you use loopback Cable, choose **“Monitor”** and confirm you **do not check** **“Automatically detect Plug & Play monitor”**

3. Please do not change **“Colors”** and **“Screen area”** in the **“Display/Settings”** menu while you are running the **MyHD**.

It effects the application may not work properly.

4.3 User Interface Description



Freeze/Play : Toggles between Freeze and Play mode

Window Size Fit to Resolution : Sets window size to overlay resolution

Current Channel : Shows current channel information

Signal Strength : Shows current Antenna Signal Strength

Terrestrial/Cable : Shows current Broad Casting is terrestrial or Cable.

Audio Info : Shows current audio information

Input Select : Select source to Antenna1, Antenna2, External A/V In or File play.

HD Mode : Toggles between Video Overlay and HD modes (requires a VGA loopback connector). Pressing any key or mouse button while in HD mode reverse to VGA Overlay mode;

Channel Up : Each click jumps to the next higher channel in the active channel list

Channel Down : Each click jumps to the next lower channel in the active channel list

Volume Control : Control volume level

Volume Mute : Toggles between volume mute and volume enable

Channel Key Pad : Selects the Channel number. Press the enter key to activate the Selected Channel.

Expand Control Panel : Expand Control Panel.

Aspect Ratio : Change Aspect Ratio 16:9 or 4:3

Audio : Change Analog Audio between Stereo and Mono when Stereo audio is in, or Language A and Language B when Bilingual audio is in.

Closed Caption : Shows/Hides Closed Caption. This function will be served the next version.

Channel List : Setting Channel Configuration.

Config Panel : Set MyHD Configuration.

4.4 Remote Controller

1. POWER

Execute and Exit MyHD Program.

2. INPUT

Change The input antenna 1, antenna 2, file play and external a/v input.

3. Numeric key (0 ~ 9)

Change the channel

4. AUDIO

Change audio mode STEREO, Mono, Language A, Language B . This function will be served next version.

5. SUB-CH

If Digital TV Channel has sub-channel. Select that channel.

6. GUIDE

In Digital TV, Information such as program guide is displayed.

This function will be served next version.

5. MUTE

Mute Audio Volume .

6. CH[^] , CH^v

Change the scanned channel. if favorite channel mode is set., next favorite channel is selected.

7. OK

Display current status.

8. CAPTION

Display closed caption. This function will be served next version.

9. FAV

Set or release favorite channel mode.

10. ASPECT

Change aspect ratio 16:9 or 4:3.

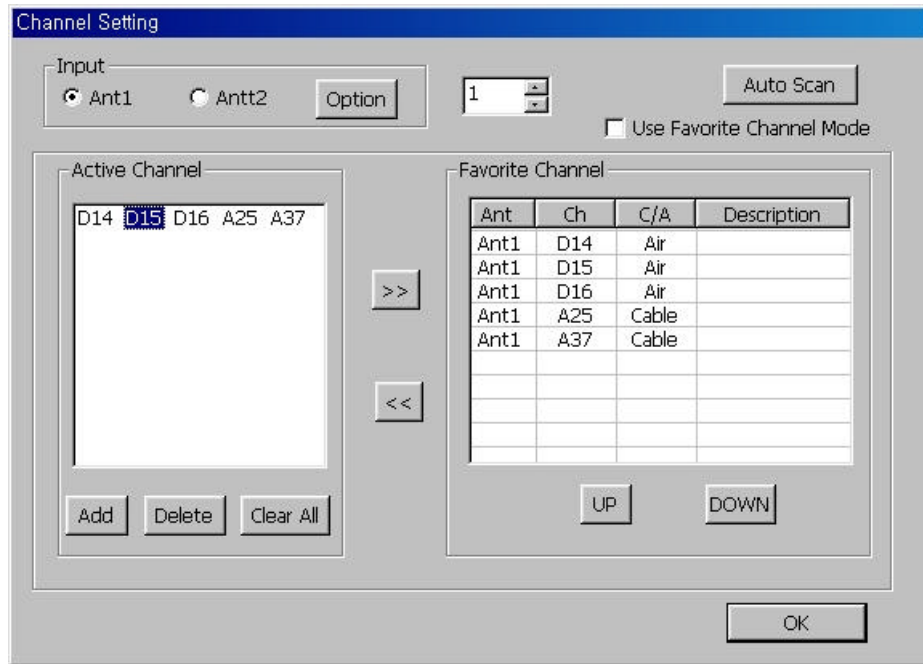
11. HD

Toggles between Video Overlay and HD modes (requires a VGA loopback connector).



4.5 Channel Property Set

When press Channel List in pop-up menu, or in expansion control panel, this window will be showed. We can set channel configuration in this window.



4.5.1 AUTO CHANNEL SCAN

Check Ant1 or Ant2 in Input area, and click option button.

And select **Terrestrial** or **cable** you want. If you don't know the input is whether terrestrial or not, choose **auto**. If set auto, It will detect the input port automatically.

And, click button **auto scan**. It will detect analog broadcasting and digital broadcasting channel, and will add active channel. After the auto scan is complete, you will have a list of TV channels which are active in your area.

4.5.2 CHANGE CHANNEL CONFIG

If you want add channel, choose the channel number in the box beside auto scan button. And click **add** button below active channel window. It will detect that channel is now broadcasting and add active channel window.

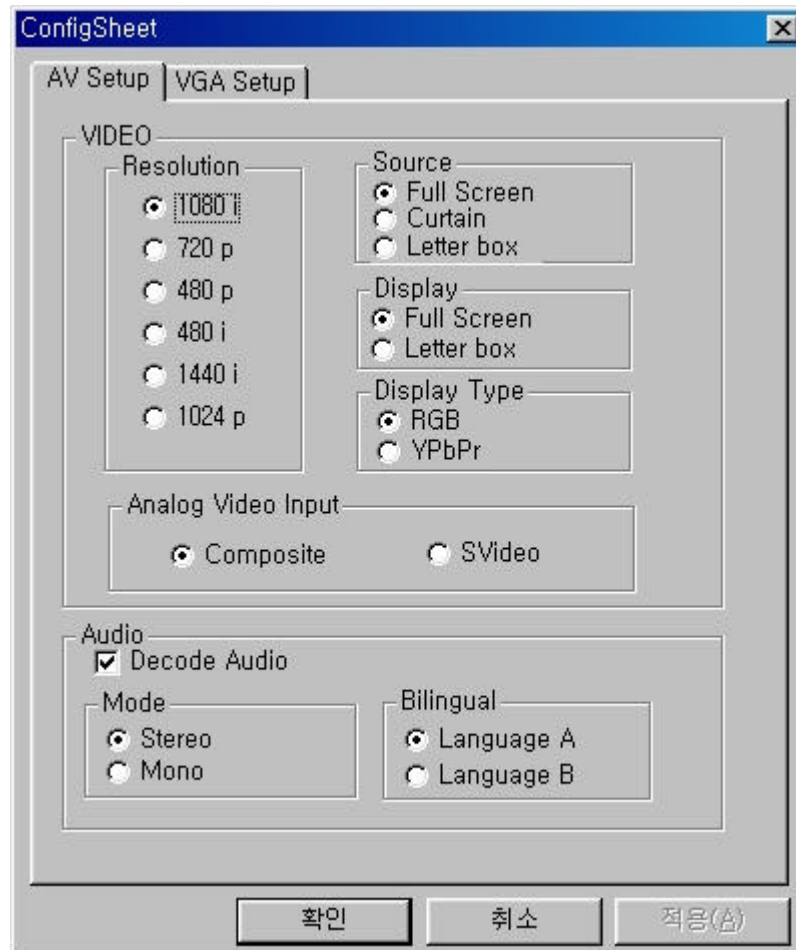
If you want remove channel, select that channel in active channel window you want. And click **delete** button.

4.5.3 ADD/REMOVE FAVORITE CHANNEL

You want set favorite channel in scanned channel, select scanned channel in Active channel window, and click button >>. At same matter, you can delete favorite channel after selecting favorite channel in favorite channel window and click <<. It will be removed.

4.6 MyHD Environment Configuration

You can configure MyHD by selecting Config in expansion menu or pop-up menu. This window has two tabs, AV Setup and VGA Setup.



4.6.1 AV SETUP TABS

Setting MyHD's Audio and Video environment.

A. Resolution

Selects the output display resolution of the **MyHD** board's primary video output port: either 1920x1080 interlaced, 1280x720 progressive, 720x480 progressive, 720x480 interlaced, 1440x1080 interlaced or 1024x768 progressive.

Set Video format in HD mode. If you using DTV ready High Definition monitor or PC monitor, I recommend 1080i mode. Almost Digital TV using 1080i as High Definition. You have NTSC TV, Use 480i format.

B. Set Display

If you have monitor with aspect ratio 4:3 – 480i, 480p, 1440i or 1024p -, and now broadcasting video format is aspect ratio 16:9, you can choose two methods, full screen or letter box screen. Full Screen displays all video in full screen. And, Letter box screen is displays video with black bar in top and bottom screen to maintain aspect ratio. You can choose either of it.

C. Set Display type

MyHD has two video output format, RGB and YpbPr. Normally, most PC monitor use RGB and HDTV component input is YpbPr. Select suitable format you want.

D. Set External Analogy A/V in

Determine the external video input is S-Video or Composite video.

E. Set Decode audio

Set to decoding digital audio or not.

F. Set Audio mode

In Analog Broadcasting, set the audio output is whether stereo audio or mono audio.

G. Set Bilingual

In Analog Broadcasting, and when Bilingual is on what language is to be output.

4.5.2 VGA SETUP TABS



A. Set Fixed Aspect Ratio

If you set Fixed Aspect Ratio, the windows overlay window maintains aspect ratio.

B. Show VGA Window

Determine whether windows overlay window is on or not.

C. Using Video Cable

You can use single monitor mode or dual monitor mode. If this item is set, it means you use single monitor mode. If does not, you can use dual monitor mode.

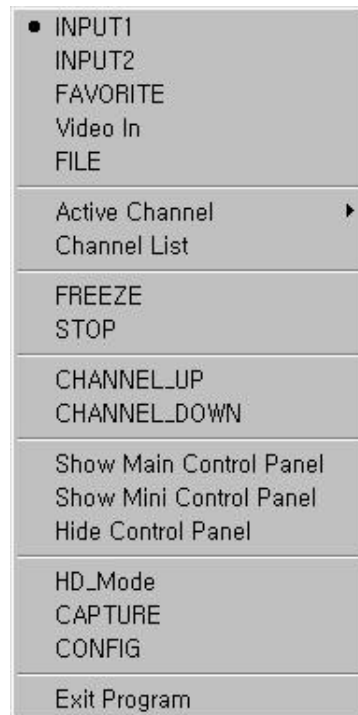
D. Keep Video On top

If set, windows overlay window is always on top.

4.7 Pop-up Controls

An alternate “pop-up” control interface is available when playing video in a VGA window. The pop-up controls are accessed by a right-click of the mouse when pointing inside the video overlay window. The pop-up menu is illustrated in Figure below.

Refer to section 4.3 User Interface Description.



4.8 Keyboard Shortcuts

Right Arrow : Volume Up

Left Arrow : Volume Down

Up Arrow : Channel Up

Down Arrow : Channel Down

numeric keys : Selects the Channel number and then press the enter key to activate the Selected Channel.

HD Mode : Double Click Left mouse button on overlay window.

Overlay Mode : Any key or Left mouse button while in HD mode.