

MyHD

Macro Image Technology, Inc.

HDTV PC Card User's Manual

Produced by :  Macro Image Technology

6th Floor, East Bldg., IT Venture Tower, 78 Garakbon-Dong, Songpa-Gu, Seoul, Korea, 138-803

TEL : 822-2142-4000

FAX : 822-2142-4099

Website : www.DTVsolution.com

E-mail : sales@mitinc.co.kr

Macro Image Technology

FCC RF

INTERFERENCE STATEMENT

NOTE:

This equipment has been tested and found to comply with the limits for a Class B digital device, pursuant to Part 15 of the FCC Rules. These limits are designed to provide reasonable protection against harmful interference in a residential installation.

This equipment generates, uses and can radiate radio frequency energy and, if not installed and used in accordance with the instructions, may cause harmful interference to radio communications. However, there is no guarantee that interference will not occur in a particular installation.

If this equipment does cause harmful interference to radio or television reception which can be determined by turning the equipment off and on, the user is encouraged to try to correct the interference by one or more of the following measures.

- Reorient or relocate the receiving antenna.
- Increase the separation between the equipment and receiver.
- Connect the equipment into an outlet on a circuit different from that to which the receiver is connected.
- Consult the dealer or an experienced radio, TV technical for help.
- Only shielded interface cable should be used.

Finally, any changes or modifications to the equipment by the user not expressly approved by the grantee or manufacturer could void the users authority to operate such equipment,

Copyright 2002 Macro Image Technology, Inc. All rights reserved

License Notice and Trademark:

Manufactured under license from Dolby Laboratories. "Dolby" and the double-D symbol are trademarks of Dolby Laboratories.

Windows 98 SE, Windows ME, Windows 2000 and Windows XP are trademarks of Microsoft Corporation.

Intel and Pentium are trademarks of Intel Corporation.

MyHD Hardware Installation

PC Platform Requirements	1
MyHD Package List	2
Hardware Installation Overview	3
MyHD Board Diagram	4
Installation of MyHD board in a PC	5
Dual Monitor Configuration	8
Single Monitor Configuration	9
Optional external hardware connections	10
Connection of Digital Audio Amp	10

MyHD Program Installation

Installing the MyHD device driver for Windows 98 SE/ME	11
Confirming the installing MyHD device driver	13
Setting DMA	14
Setting windows environment	15
Installing the MyHD device driver for Windows XP	16
Confirming DMA Settings	19
Installing the MyHD Application Software	20

MyHD Program

Operating MyHD	22
Current Display Status	23
Channel Number Key Pad	24
File Control	25
Channel and Volume Control	25
Mode Setting	26
Configuration	26
Pop-up Menu	27

Remote Controller

Remote Controller	31
-------------------------	----

Channel Settings

To Scan Auto-Channels	33
Add/Delete Channels	34
Selecting Favorite Channels	34

A/V Settings

Setting Video Configuration	35
Setting Audio Configuration	37

VGA Settings

Fixed Aspect Ratio	38
Overlay Mode	38

Capture Settings

Setting a capture mode	39
AVI Capture Option	40
Reservation Capture Option for Timer Recording	41
File Play	42

Running MyHD

Setting Channels	45
Controlling Volume	45
Changing Input Type	45
Storing Transport Stream into a HDD	46
Replay the captured Transport Stream Files	46
AVI Capture	48
Still Image Capture	59
Tape Record	50
HD Mode & Overlay Window Mode	50
Tape(D-VHS) record and playback Settings	51

PC Platform Requirements

To achieve optimum performance of the **MyHD** Board, your PC requires a following minimum configuration.

CPU : Pentium-II 333MHz or faster

DRAM : 64 Megabytes or more

System Bus : PCI

OS : Windows 98SE, Windows ME , Windows 2000, Windows XP

Other Software : DirectX Media 7.0 or Higher

Graphics Card : DirectX compatible VGA card

(8 MB memory or more recommended)

One Available PCI Slot

One 9- pin serial port

*For digital transport stream(ATSC) recording and playback, minimum system requirements are as follows:

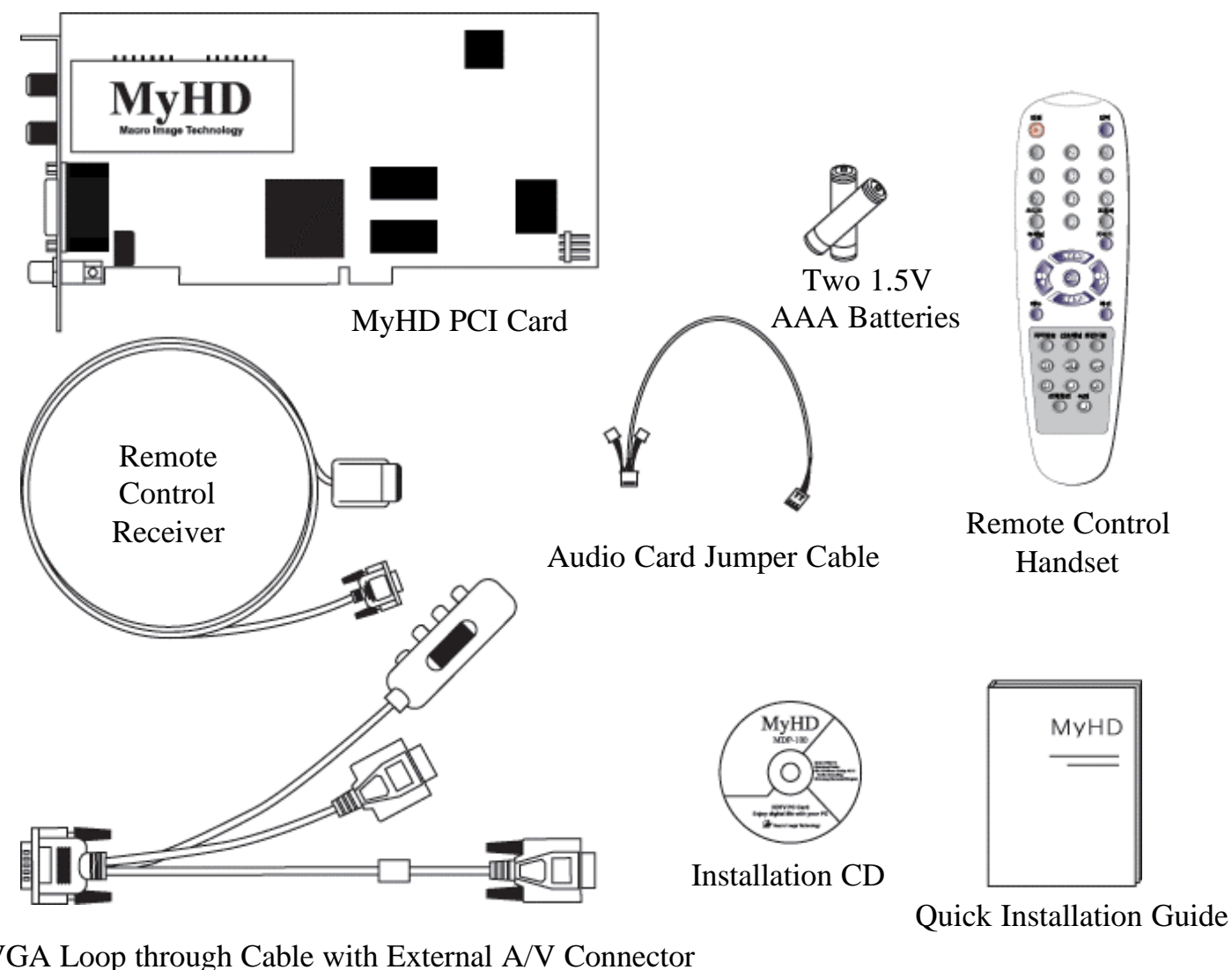
CPU : Pentium-III 800MHz or faster

All other requirements are the same with the above configuration.

MyHD Package List

This package is including :

- MyHD PCI Card
- Quick Installation Guide
- VGA Loop through Cable with External A/V Connector
- Remote Control Handset
- Remote Control Receiver
- Installation CD
- Audio Card Jumper Cable
- Two 1.5V AAA Batteries



Hardware installation Overview

To install **MyHD** on your Windows 98SE, Windows ME, Windows 2000, or Windows XP system:

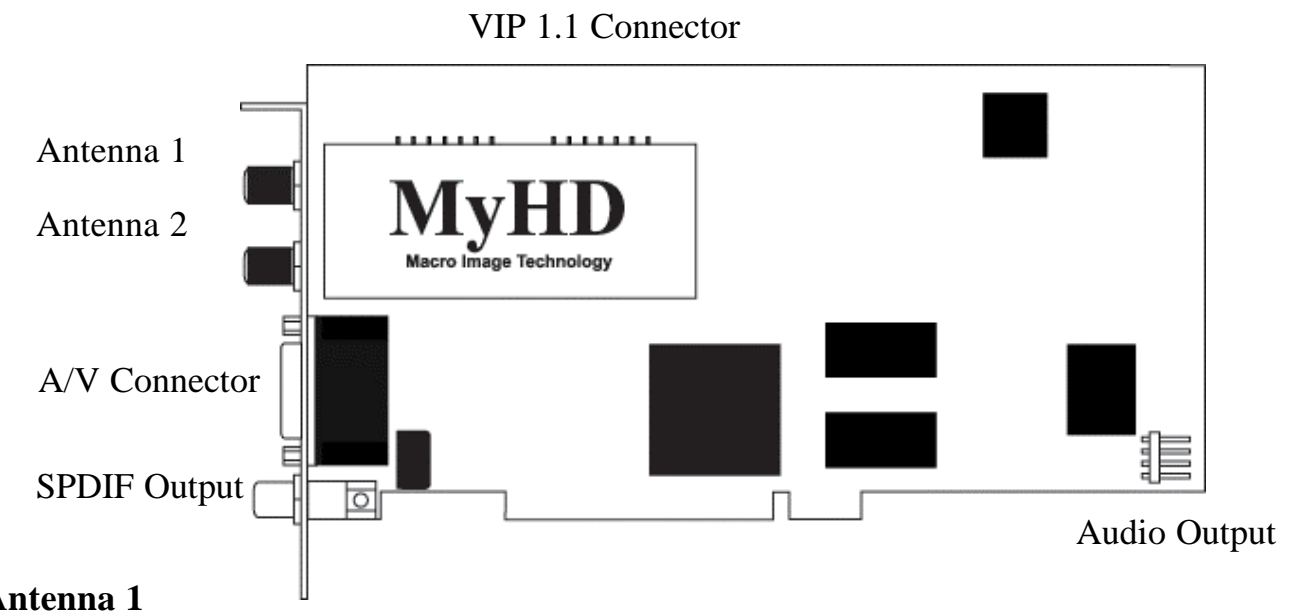
Turn off your PC, install the MyHD PCI card, connect the audio jumper cable as needed, and connect the Remote Control Receiver to a serial port on your PC.

Connect the MyHD PCI card to an external video source and display devices as desired.

Turn on your PC and install the MyHD Windows device driver from the installation CD, then install the MyHD application software.

If DirectX 7.0 or higher version is not installed on your PC, install the latest version of DirectX before the installation of the MyHD device driver.

MyHD board diagram



Antenna 1

Recommended to connect the antenna lead from your rooftop antenna

Antenna 2

Recommended to connect the antenna lead from your cable antenna

A/V Connector

Connector to connect A/V cable

SPDIF Output

Allows the digital audio output of the MyHD card to be connected to an external audio amplifier.

Audio Output

Allows the analog audio output of the MyHD card to be connected to the LINE IN, AUX or CD input of your PC sound card or motherboard(using the enclosed jumper cable).

VIP 1.1 Connector

This connector is not currently working.

Installation of MyHD board in a PC

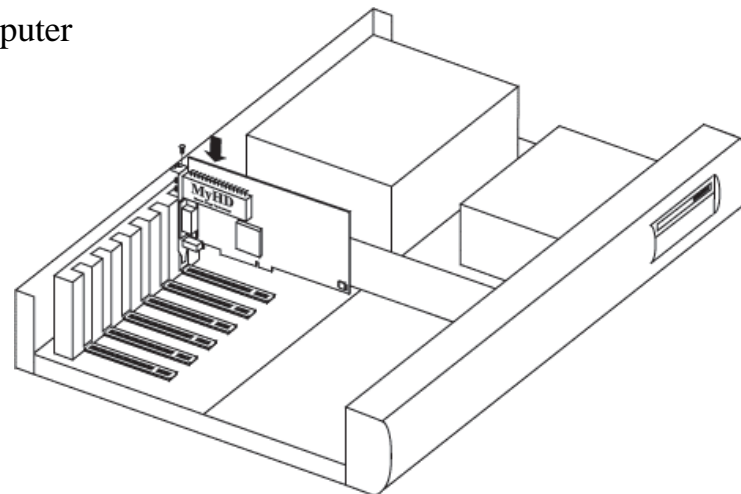
Warning - Static Sensitive Components

To avoid possible damage to MyHD Board and/or other system components from static discharge, always discharge your body's static electricity prior to handling MyHD Board or other system components.

Discharging can be done either by using a properly grounded anti-static wrist strap or by simply touching the chassis of a grounded (plugged-in) computer. In addition, always handle the card by its edges whenever possible, to avoid mechanical damage to delicate components on the board.

To install the **MyHD** board, follow the steps listed below:

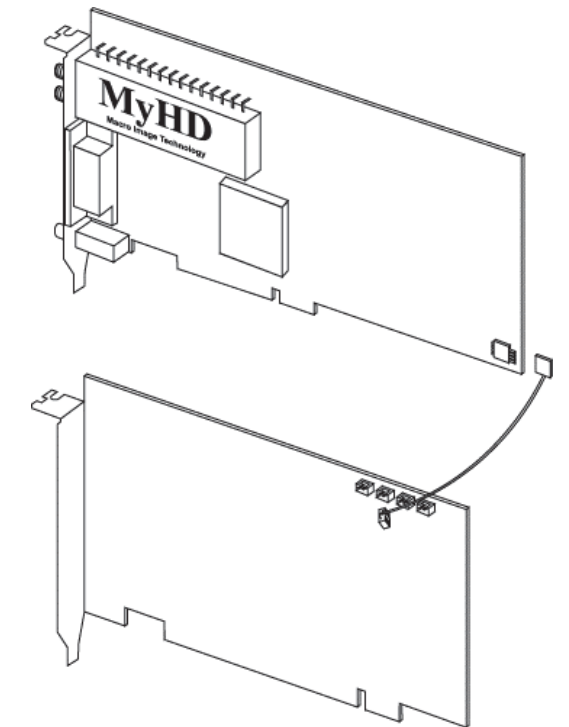
1. With the power off, remove your computer cover and locate an available PCI slot.



2. Remove the screw attached to the slot cover and remove the slot cover plate.
3. Before handling the **MyHD** card, ground yourself by touching the power supply box inside your computer
4. Position your card directly above the PCI slot and insert the card firmly into the slot. Care should be taken to press it evenly and snugly into its slot.

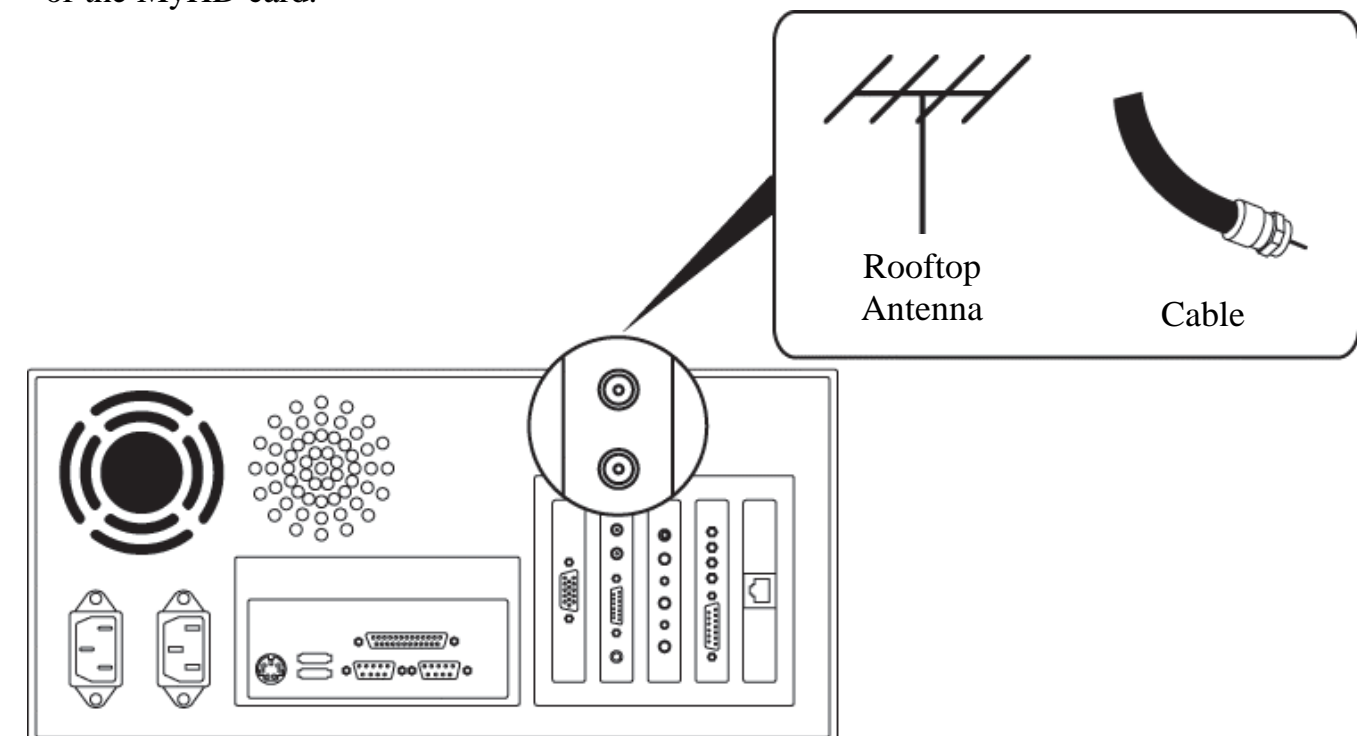
5. Use the enclosed audio jumper cable to connect the audio output of the MyHD card to the LINE IN, AUX or CD input of your PC sound card or motherboard.

***If the audio output is set by the jumper cable in the MyHD application program, you have to connect the jumper cable between the MyHD card and a sound card. However, you do not need to do it when the audio output is set by wave in the MyHD application program.(Refer to "Audio Configuration on page 37).*

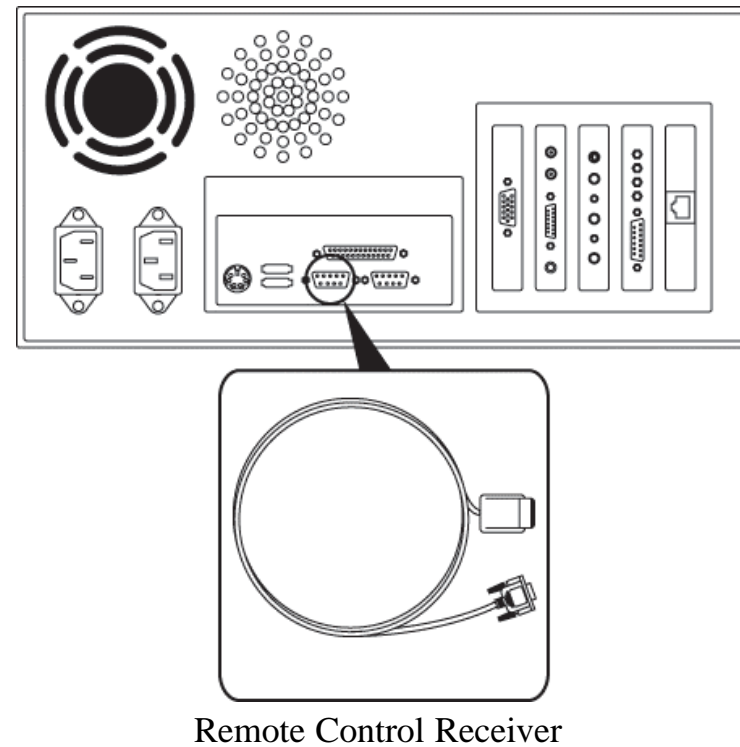


6. Replace the cover on the computer.

7. Attach the antenna lead from your rooftop antenna or cable system to the antenna input of the MyHD card.

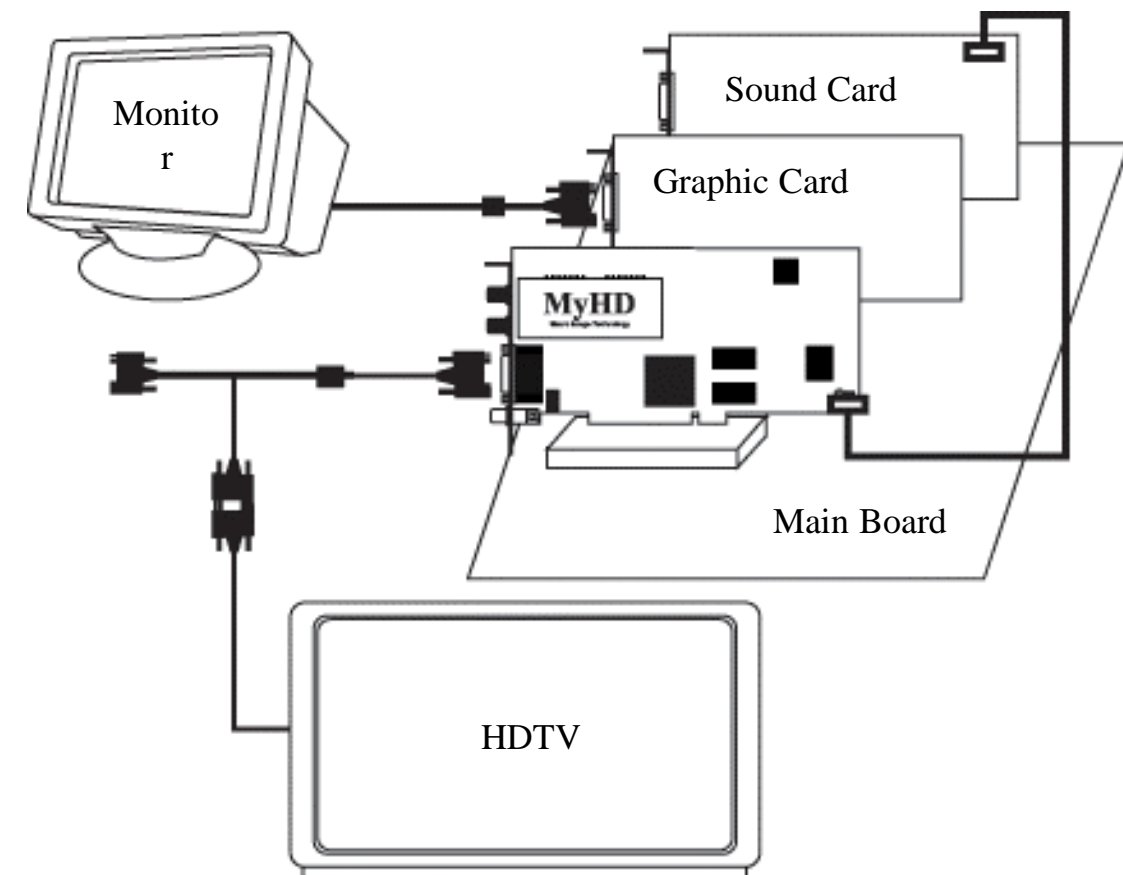


8. Connect the remote control receiver to 9-pin serial port.



Choose your display configuration (for single-monitor displays, please go to page 9)

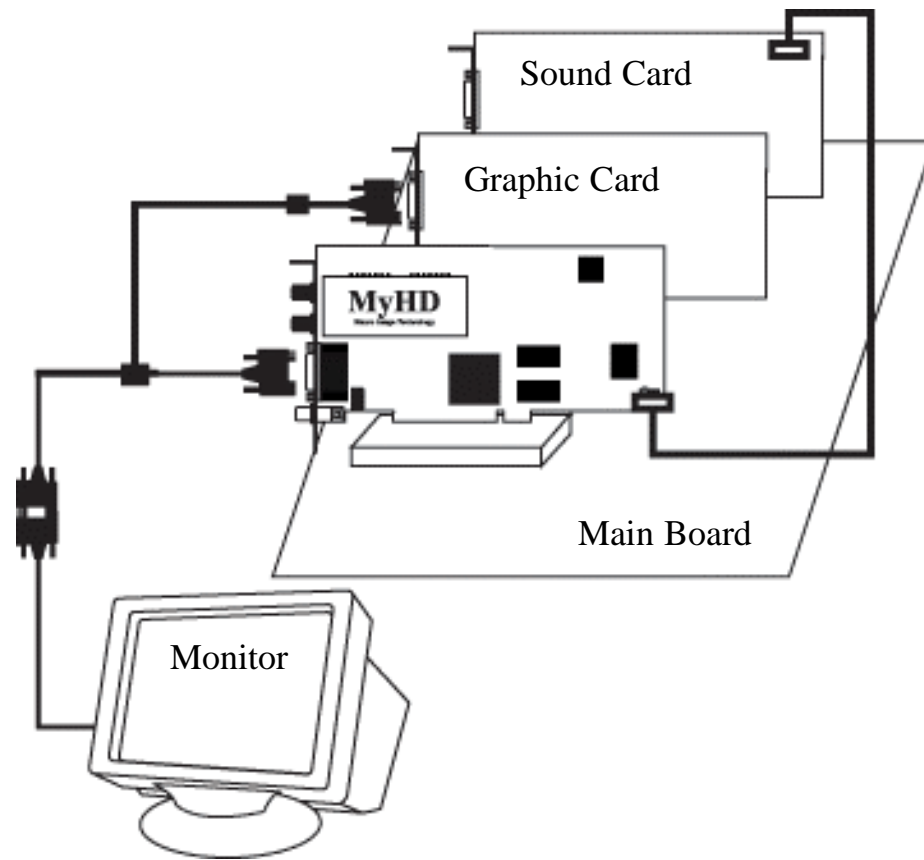
Dual monitor configuration



A dual monitor configuration displays the standard Windows desktop on your PC monitor along with full-screen output from your MyHD card on a separate HDTV or VGA monitor. MyHD supports the following resolutions and horizontal frequencies on any monitor equipped with standard RGBHV or YPbPr inputs:

- ☐ 1080i (1920x1080 interlaced, 33.7kHz)
- ☐ 1024p (1024x768 progressive, 48.3kHz)
- ☐ 720p (1280x720 progressive, 44.9kHz)
- ☐ 480p (720x480 progressive, 31.5kHz)
- ☐ 480i (720x480 interlaced, 15.75kHz)

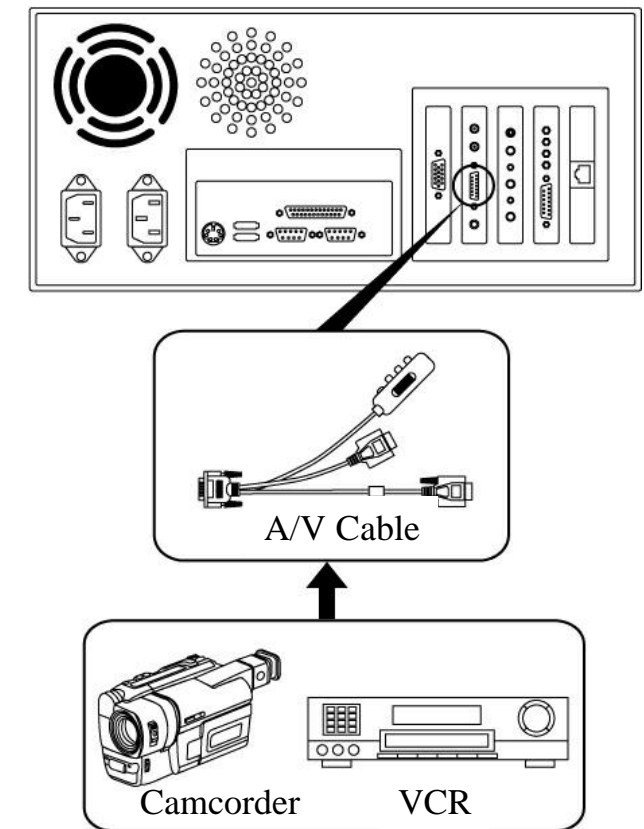
Single Monitor Configuration



A single monitor configuration displays the output of your MyHD card in either a resizable window or full-screen (giving you the ability to switch between the regular Windows desktop and MyHD's full-screen display), by using the enclosed VGA loop through cable with external A/V connector as shown (connecting the VGA output of your PC to the MyHD card, which then passes the combined video signals to your PC monitor).

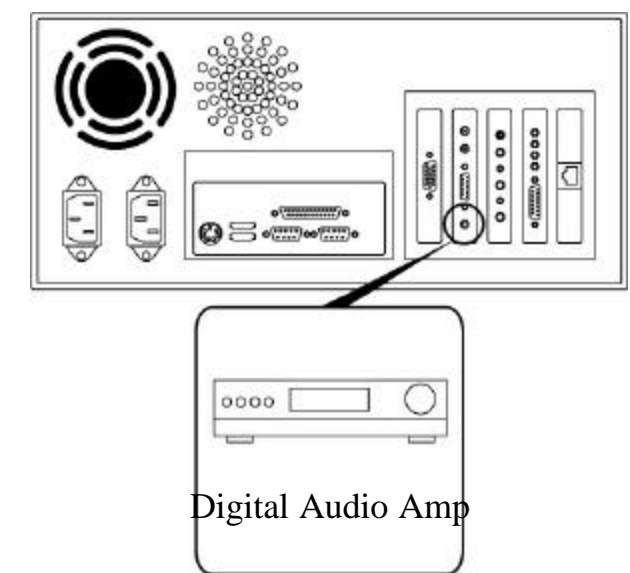
Optional external hardware connections

You can watch and capture video from any external source (including VCR, DVD, laserdisc, etc.) by connecting them to the VGA loop through cable with external A/V connector. Simply connect the video and audio outputs from your external source to the S-Video and/or RCA input jacks.



Connection of Digital Audio Amp

MyHD also supports SPDIF for digital audio output. Simply connect a digital audio cable from the RCA output jack on the MyHD card to the SPDIF input of any Dolby AC-3 5.1 channel audio amplifier.



Installing the MyHD device driver for Windows 98/Me

After your hardware installation has completed, turn on your PC and insert the installation CD. As Windows begins to boot, it will automatically open the “Add New Hardware Wizard” once it detects your addition of the MyHD card: Click on “Next >”.



Choose “Search for the best driver for your device.(Recommended)” and click on “Next >”.

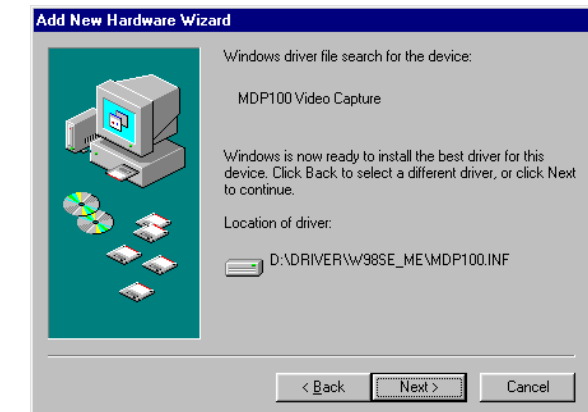


Choose “Specify a location” and then click on Browse to open the contents of the installation CD, navigate to the DRIVERS folder, and choose the subdirectory for the version of Windows currently installed on your computer and click on “Next >”

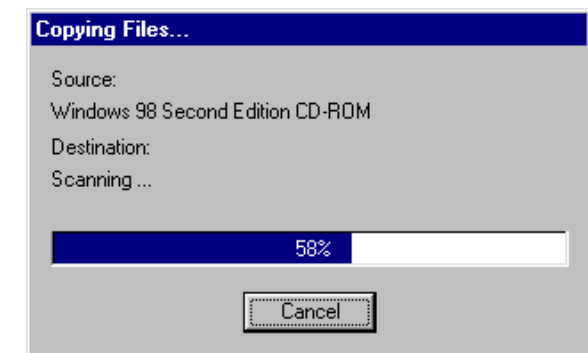


Note: you must choose the driver which matches your operating system as software designed for one version of Windows may not operate properly on another.

Click on “Next >” if MyHD driver is searched.



Copying Files...



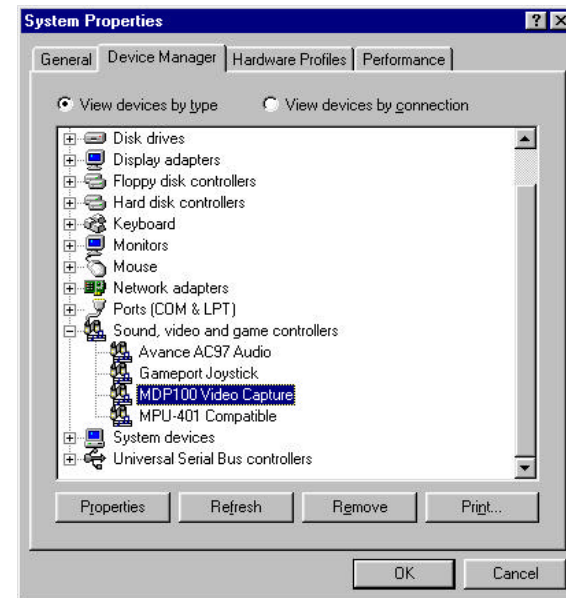
After the installation has completed, click on “Finish”.



Confirming the installation of the MyHD device driver

To confirm the installing MyHD in Device Manager,

1. Choose “Control Panel”/“System” /“Device Manager”.
2. Click “Sound, video and game controllers” and then confirm the category of “MDP100 Video Capture”.

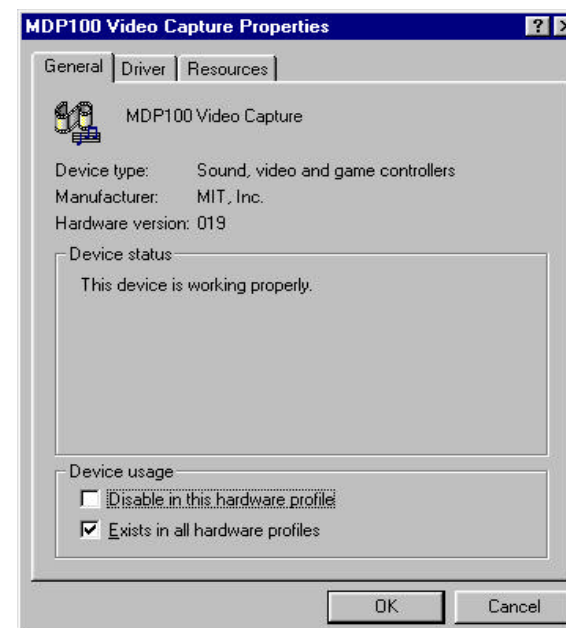


Choose;

1. “MDP100 Video Capture Properties”
2. “General”

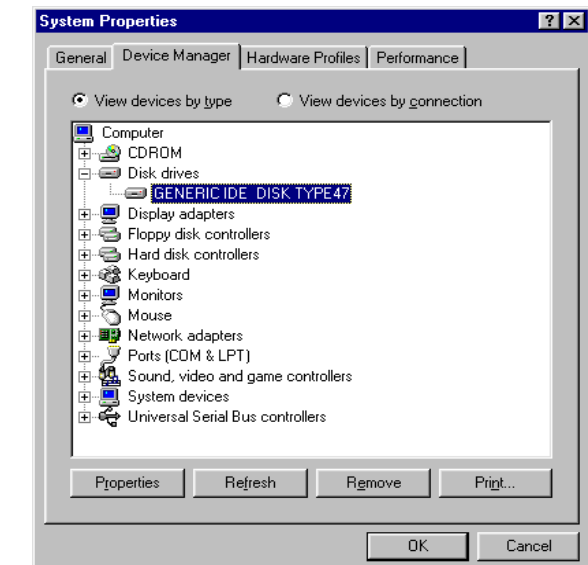
Confirm the phrase of “This device is working properly” in Device status.

If the phrase is not shown, please install the device driver of MyHD again.



Setting DMA

1. Choose “Control Panel”/“System” /“Disk drives”.
2. Click “GENERIC IDE DISK ...”.

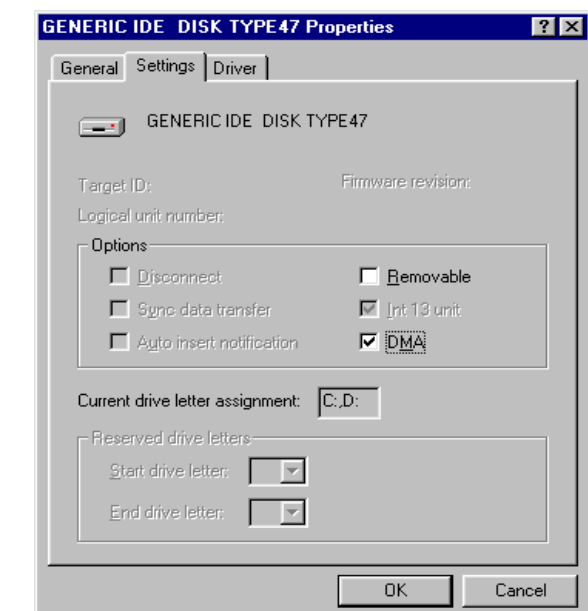


Choose;

1. “GENERIC IDE DISK ... Properties”
2. “Settings”

Confirm the “DMA” in Options.

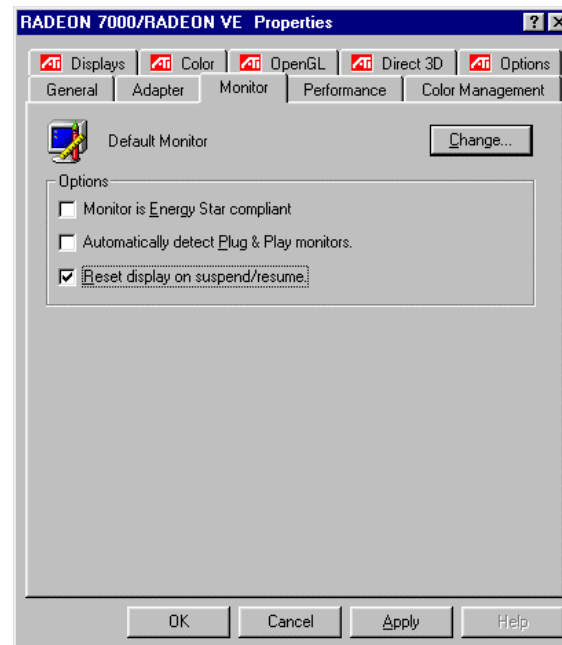
If the “DMA” is not checked, please check the “DMA”.



Setting windows environment

If the monitor is connected to VGA card through VGA loop through cable with external A/V connector, confirm display properties.

1. Choose “Control Panel”/“Display”.
2. Choose “Settings”/“Advanced” in display Properties.
3. Choose “Monitor” and then uncheck “Automatically detect Plug & Play monitors.”



Warning

Don't change resolution of screen area in “display properties”/“settings” while the MyHD program is executing.

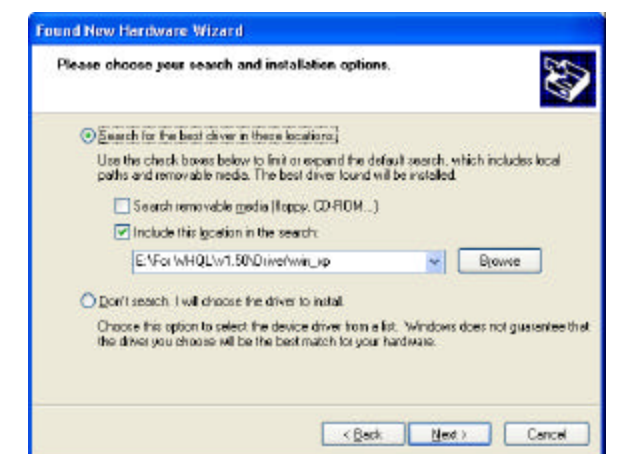
Installing the MyHD device driver for Windows XP

After your hardware installation has completed, turn on your PC and insert the installation CD. As Windows begins to boot, it will automatically open the “Found New Hardware Wizard” once it detects your addition of the MyHD card:

Choose “Install from a list or specific location (Advanced)” and click on “Next >”.

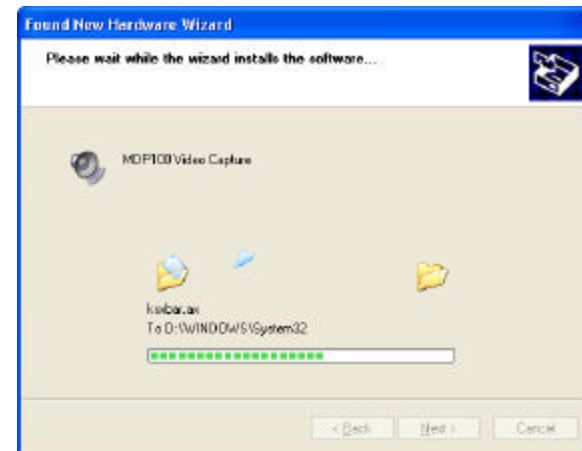


Choose “Search for the best driver in these locations” and “Include this location in the search,” then click on Browse to open the contents of the installation CD, navigate to the DRIVERS folder, and choose the subdirectory for the version of Windows currently installed on your computer and click on “Next >”.

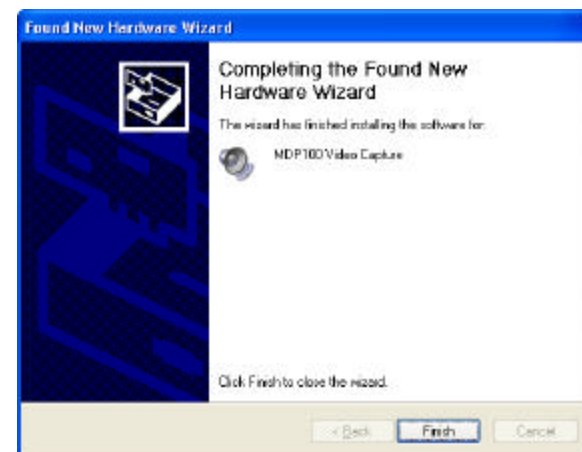


Note: you must choose the driver which matches your operating system as software designed for one version of Windows may not operate properly on another.

Click on “Next >” to install the driver.



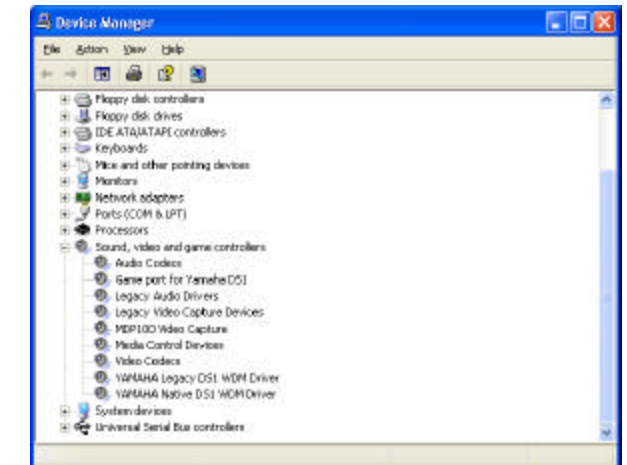
After the installation has completed, click on “Finish”.



Confirming the installation of MyHD device driver

To confirm the installation of MyHD device driver in Device Manager,

1. Choose “Control Panel”/“System” /“Device Manager”
2. Click “Sound, video and game controllers” then confirm the category of “MDP100 Video Capture”.

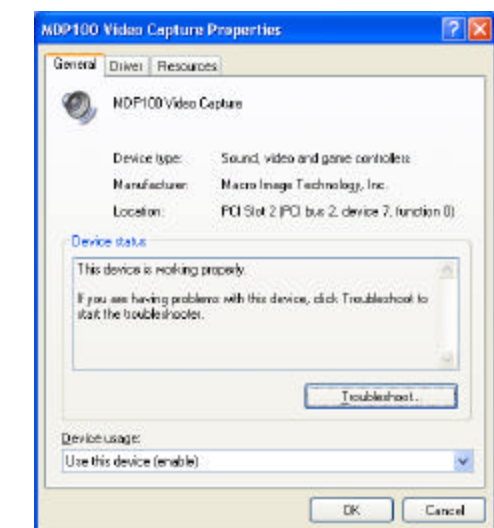


Choose;

1. “MDP100 Video Capture Properties”
2. “General”

Confirm the phrase of “This device is working properly” in Device status.

If the phrase is not shown, please install the device driver of MyHD again.

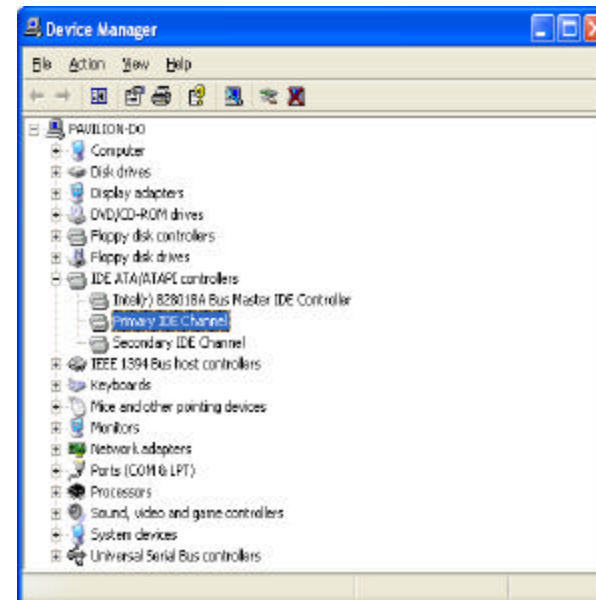


Confirming DMA Settings

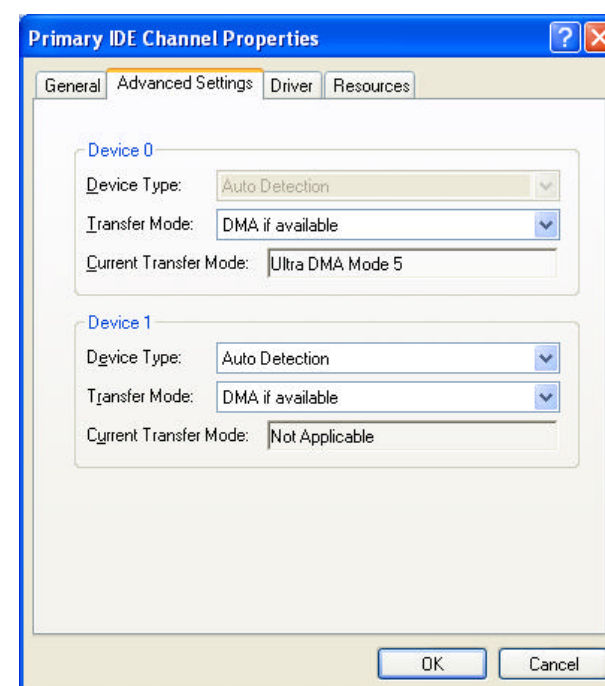
To confirm the installing MyHD in Device Manager,

To confirm the installing MyHD in Device Manager(DMA is default “Transfer Mode” in Windows XP),

1. Choose “Control Panel”/“System” /“Device Manager”
2. Select “IDE ATA/ATAPI Controllers” /“Primary IDE Channel”



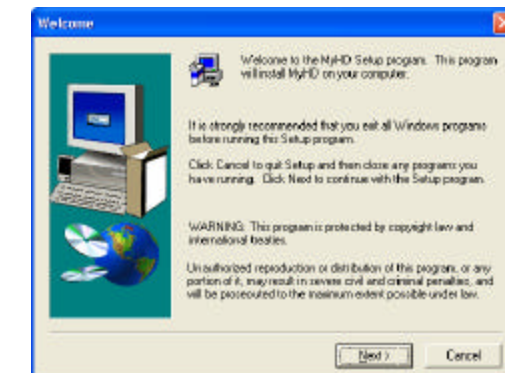
3. Click “Advanced Setting” then, confirm DMA is selected in “Transfer Mode”



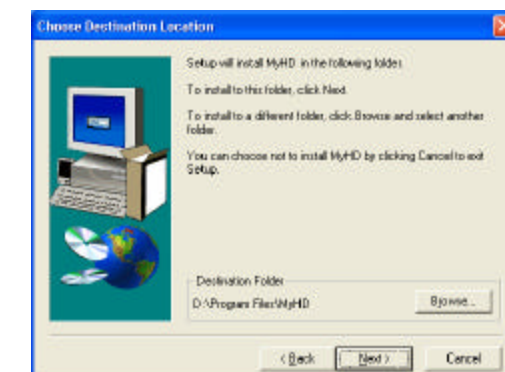
Installing the MyHD Application Software

With the installation CD still loaded in your PC, open the Windows Explorer, navigate to the APP folder on the CD, and double-click on SETUP.EXE to launch the installation, following the on-screen prompts until installation is complete.

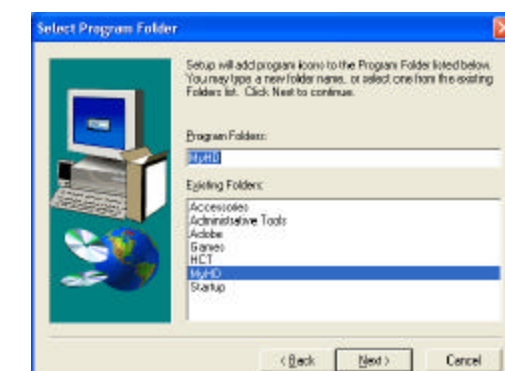
Click Next >



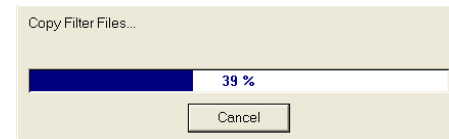
Choose Destination Folder,
Click Next >



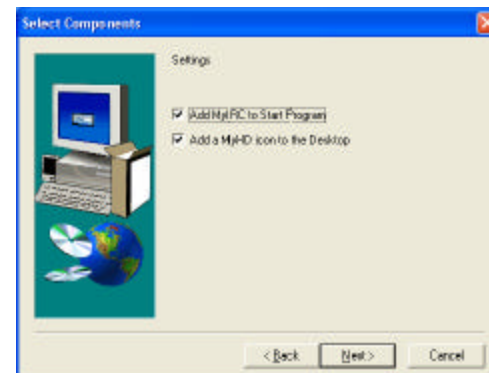
Choose a program folder,
Click Next >



Installing is started.

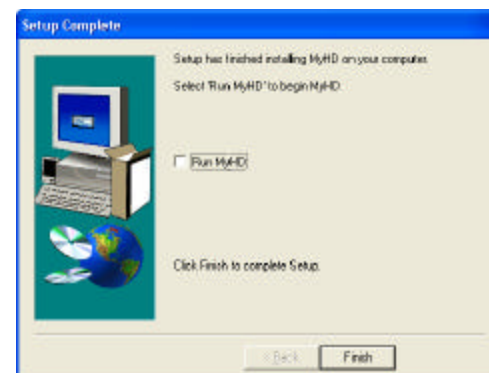


The right window is appeared after completing installing.
Desired Settings are set, then click Next >



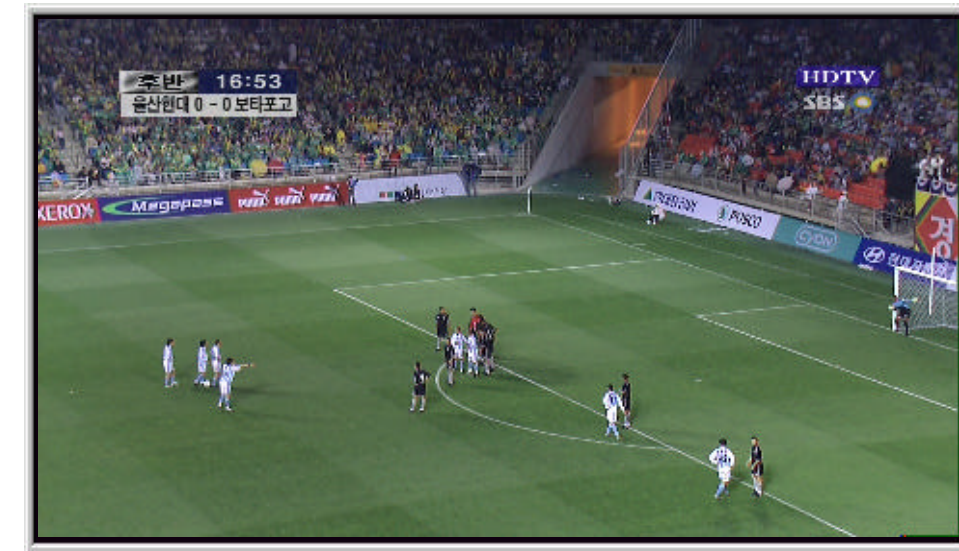
Installing of MyHD is completed.

To run the MyHD program immediately,
Check the check box and click Finish.



Operating MyHD

The below window will be appeared when you execute the MyHD program.



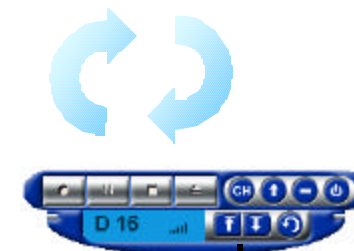
Overlay window for watching TV



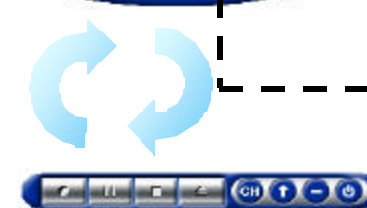
Main control panel for the MyHD



Expanded Main control panel for configuring MyHD



Mini control panel for simple operation such as channel up/down and volume up/down.



Goes to main control panel

Current Display Status



Audio Status

Indicate the current audio configuration.

1. On digital broadcasting: Dual Mono, Center, Stereo, LCR, LRS, LCRS, LRLsRs or LCRsLs (L:left, R:right, C:center, Ls:left surround, Rs:right surround) will be displayed.
2. On analog broadcasting: Stereo, Mono, SAP will be displayed.

Receiving Sensitivity

Indicate the sensitivity of Antenna
Receiving on a current digital
broadcasting channel.

Current Channel

Indicate a current channel.
The D notes a digital broadcasting and the A
notes an analog broadcasting channel.
Following the channel number, -1 or -2 notes a
sub-channel if the sub-channel is existed.

Current Input

Display a current input antenna, either
Ant1 or Ant2.

Favorite Channel Mode

Display the favorite channel mode is on/off.

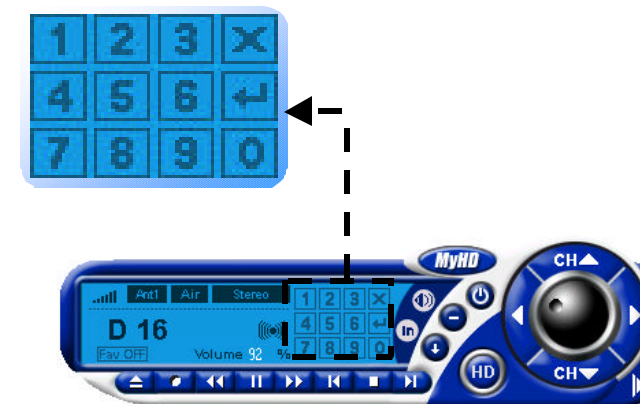
Air/Cable

Display a current channel, either
terrestrial or cable.

Current Volume

Display current volume.

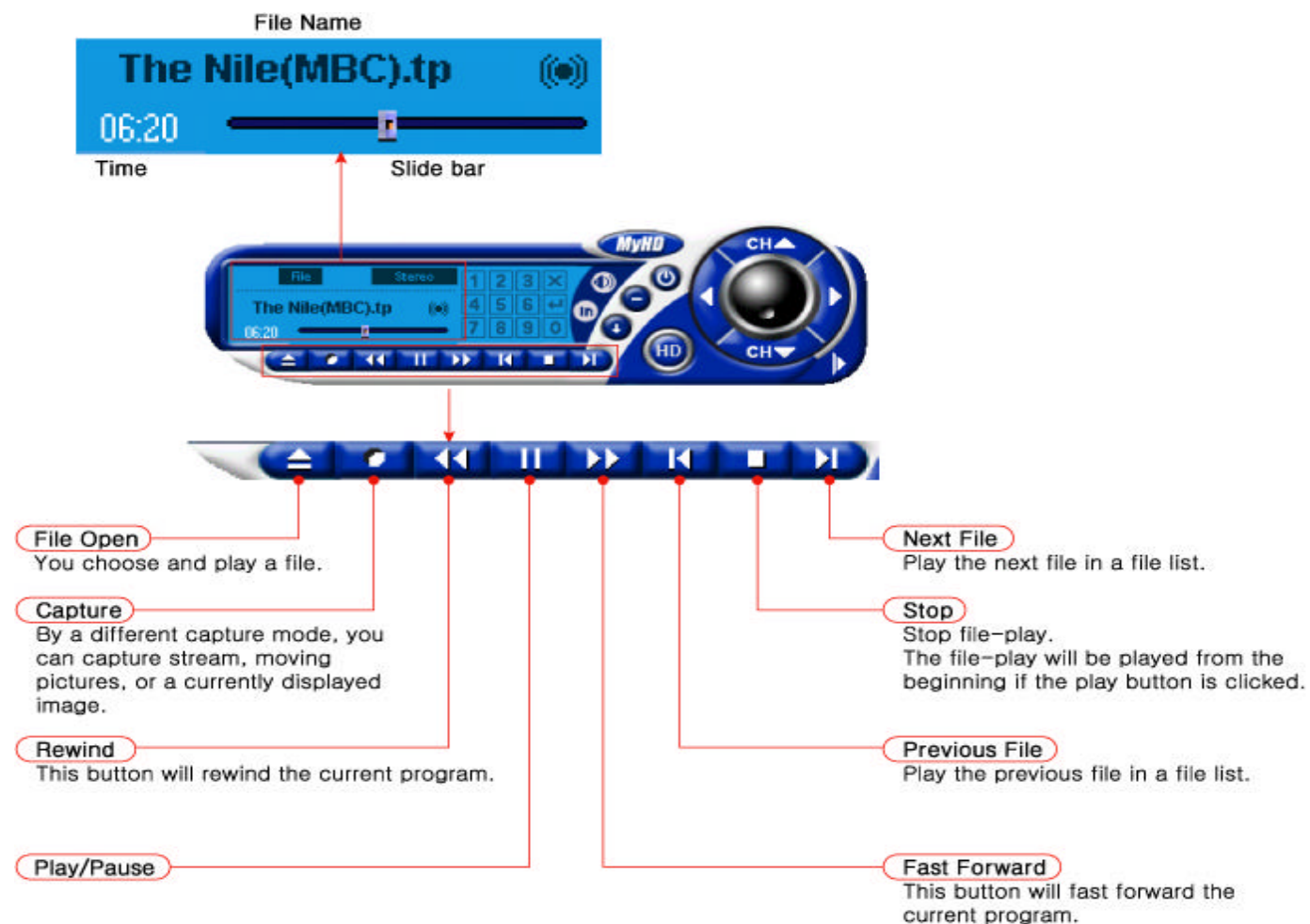
Channel number key pad



Select a channel number by a mouse.

You can also select a channel by a keyboard.

File control



Channel and volume control



Mode setting

Mute Volume
Mute audio volume.

Input Select
Select input mode:
antenna 1, antenna 2,
external A/V in or file.

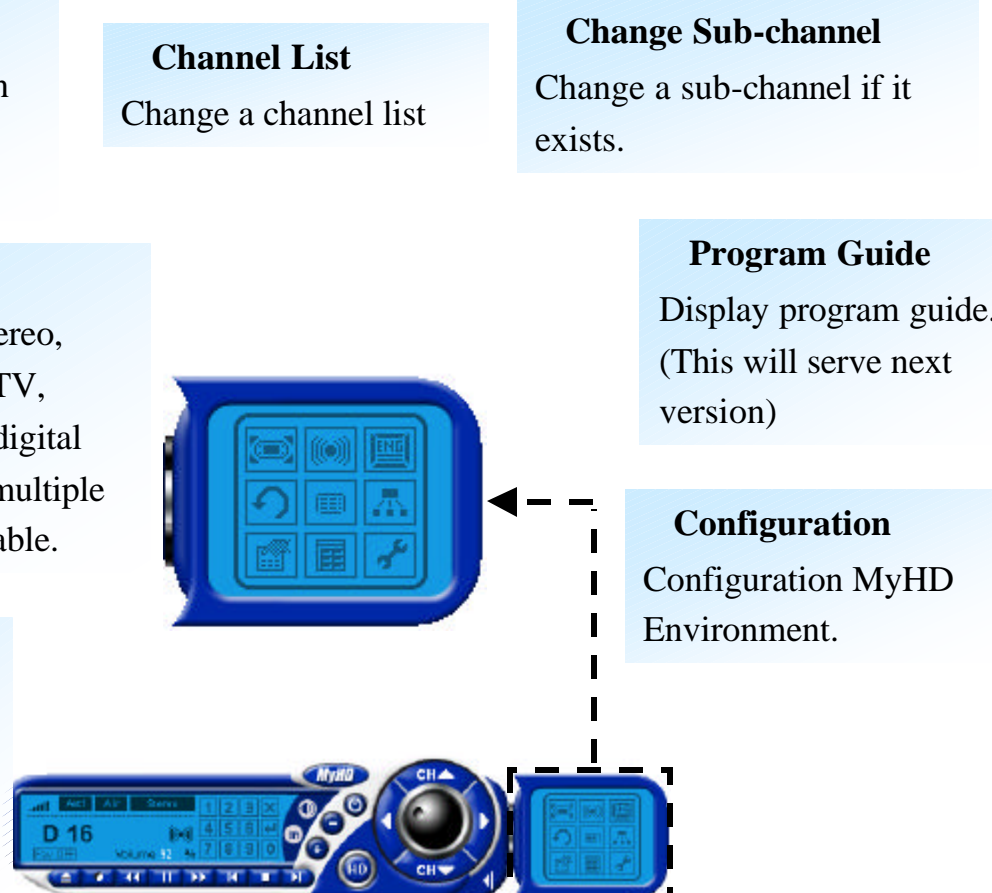
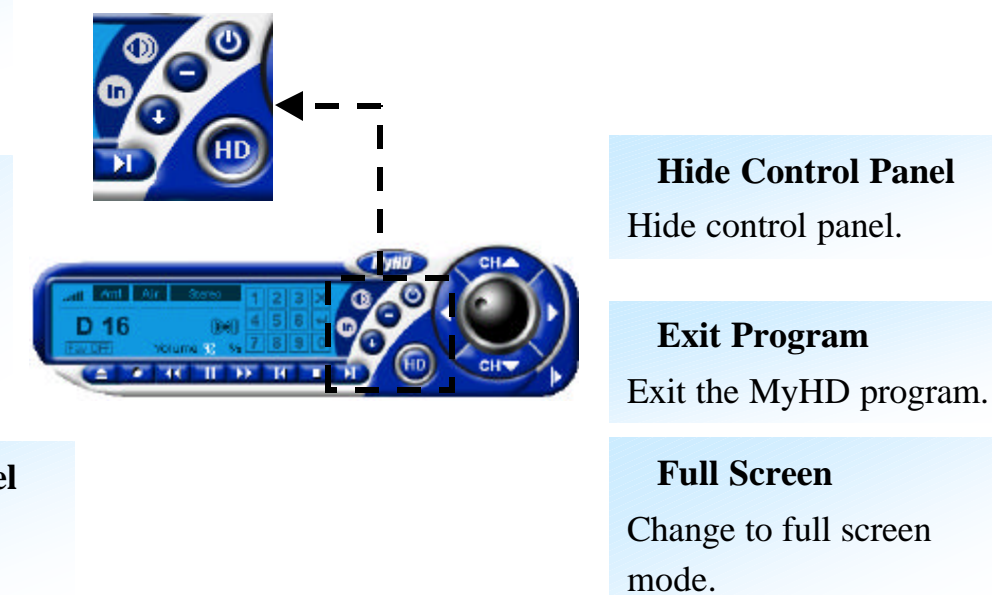
Change Control Panel
Change to mini control
panel.

Configuration

Change Aspect Ratio
Change an aspect ratio in
overlay window:
2:1, 16:9 or 4:3.

Change Audio
Switch audio mode to stereo,
mono or SAP in analog TV,
switch audio channel in digital
TV or DVD file play if multiple
audio channels are available.

Closed Caption
Configure closed
caption.
(It will be served the
next version.)



Pop-up menu

Press mouse right button on MyHD application program. Pop-up menu will appear like this.

antenna1 (Ctrl+1)

Change input to antenna 1.

antenna2 (Ctrl+2)

Change input to antenna2

Favorite (Ctrl+M)

Favorite channel mode on

Video In (Ctrl+V)

Change current input to external video in.

File (Ctrl+F)

Choose transport stream file to play. and, File play mode on. When this menu is selected, **Active Channel** change to **Active File** and **Channel List** changed to **File List** in the menu.

Tape (Ctrl+D)

Record and playback with AV/C Tape Recorder through IEEE 1394 interface.

● Ant1	Ctrl+1
Ant2	Ctrl+2
Favorite	Ctrl+M
Video In	Ctrl+V
File	Ctrl+F
Tape	Ctrl+D
Active Channel	
Channel List	Ctrl+L
Pause	
Stop	Ctrl+Space
Channel_Up	UpArrow
Channel_Down	DownArrow
Show Main Control Panel	
Show Mini Control Panel	
Hide Control Panel	
HD Mode	
Capture	Ctrl+C
Config Panel	Ctrl+P
Exit Program	Ctrl+X
About MyHD	

Active channel

As shown below, current active channel is shown. Select one of them, the channel will be changed you selected.

Active Channel	▶	✓ Ant1 D14 MBC DTV
Channel List	Ctrl+L	Ant1 D15 KBS1 DTV
Pause		Ant1 D16 SBS DTV
Stop	Ctrl+Space	Ant1 D17 KBS2 DTV
Channel_Up	UpArrow	Ant1 D18 EBS DTV
Channel_Down	DownArrow	Ant1 A34
		Ant1 A37

Channel list (Ctrl+L)

Execute Channel list configure window. (refer to page 33 for setting channels)

Active File

As shown above, files that are in the file list is shown. Select one of them, you will play the file you selected.

Active File		Hawaii-2.trp
File List	Ctrl+L	Komoaud.tp
Play		legend2.tp
Stop	Ctrl+Space	lion.tp
Channel_Up	UpArrow	Road_98.trp
Channel_Down	DownArrow	sbs1.tp
		Duke.trp

File List (Ctrl+L)

Execute File list dialog box. (refer page 42 for file play setup)

Pause/Play

Pause display. and, Toggled to Play. and, Select again, menu is toggled to Pause and, display play again.

Stop : Stop display

Channel_Up (UpArrow) : Change channel up

Channel_Down (DownArrow) : Change channel down

Show Main Control Panel : Shows main control panel

Show Mini Control Panel : Shows mini control panel

Hide Control Panel : Hide control panel.

HD mode : Change to Full screen mode.

Capture (Ctrl+C)

Start Capturing stream, moving picture or image as referred to configure

Config panel (Ctrl+P)

Execute environment configure window. (refer page 29 for setting A/V)

Exit Program (Ctrl+X) : Exit MyHD

POWER

Start or Exit MyHD application program.

INPUT

Change MyHD's input to antenna 1, antenna 2, Video In, file, or tape(if available).

Numeric Key (0 ~ 9)

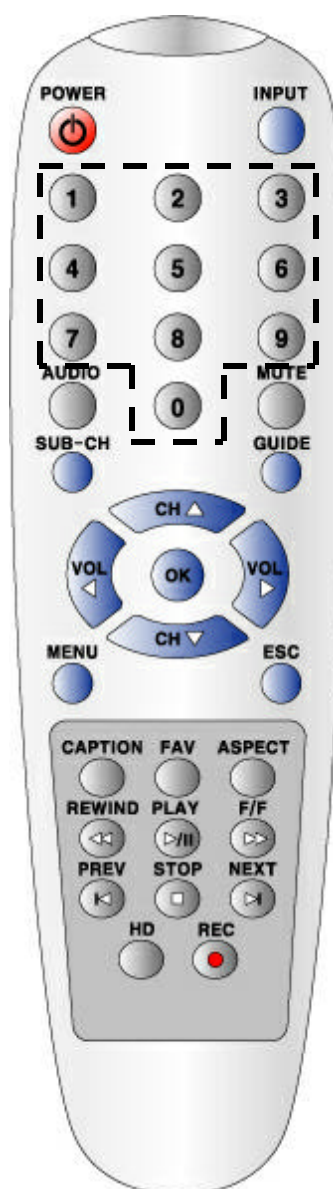
Change channel number directly.

AUDIO

Switch audio mode to stereo, mono or SAP in analog TV, switch audio channel in digital TV or DVD file play if multiple audio channels are available.

MUTE

Mute volume.



SUB-CH

In Digital broadcasting. If there is sub-channel, sub-channel will change.

GUIDE

Display Channel Guide. (Will serve next version)

Channel Up/Down

Change memorized next channel. If FAV is on, changed to next favorite channel.

OK

Display current channel and, volume Information.

ESC

Remove file list window.

MENU

Show EPG or function settings(Will serve next version)

CAPTION

Change closed caption mode. (Will serve next version)

FAV

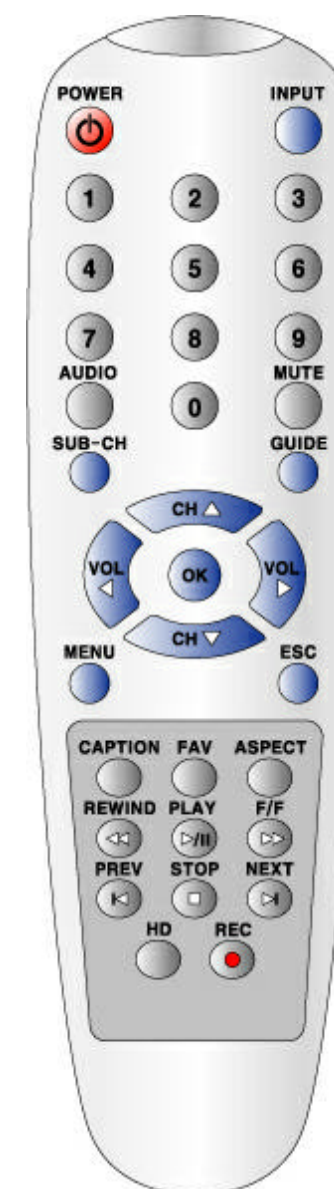
Set or release favorite channel mode.

ASPECT

Change overlay window's aspect ratio to 16:9, 4:3 or 2:1.

PLAY/PAUSE

Play or pause display. In full screen mode and file list is on, play selected file.



Previous File

In full screen mode, open file list and navigate.

STOP

Stop display.

Next File

In full screen mode, open file list and navigate.

HD

Toggle full screen mode or windows mode.

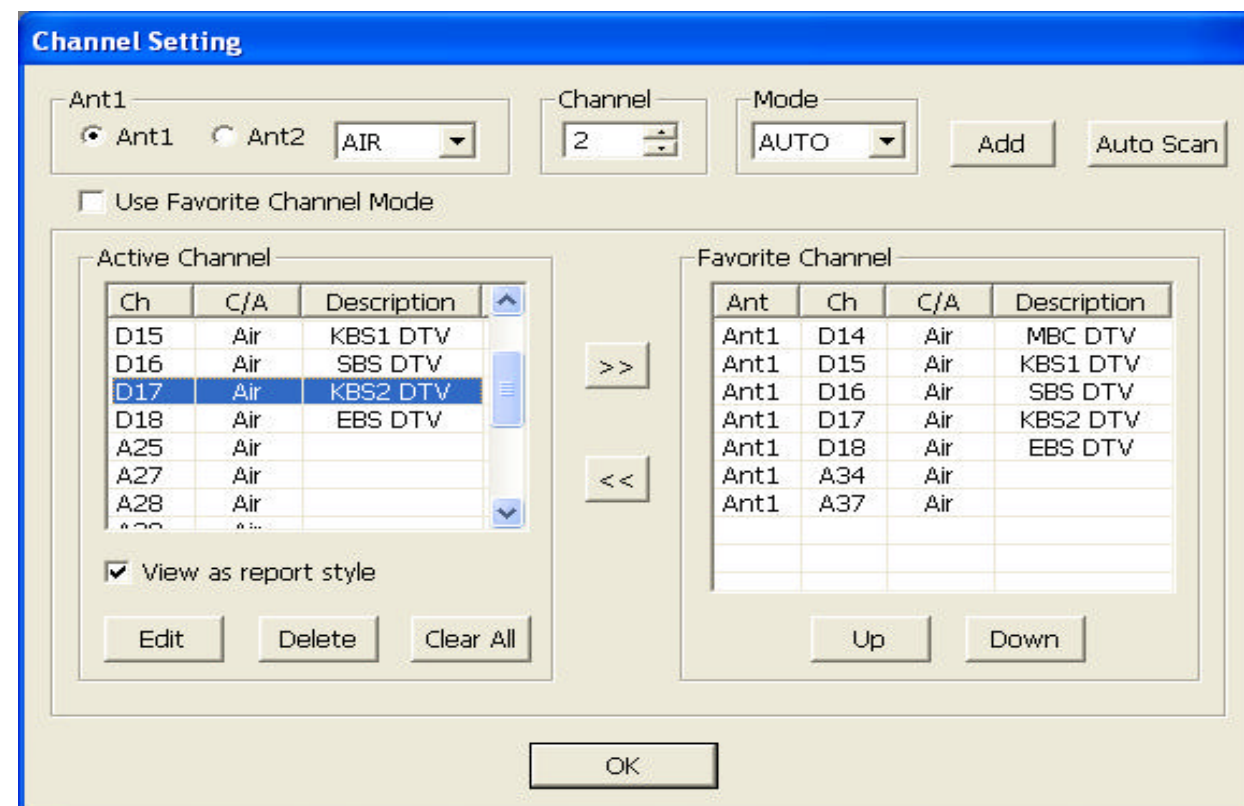
RECORD

Start Capturing stream, moving picture or image.

To set up the TV channels and display the window of “Channel Setting”

1. Select Expanded main control panel/Channel List
2. Click right mouse button/pop up menu/channel list

To Scan Auto-Channels



1. Select Antenna 1 or Antenna 2
2. Choose Air(terrestrial broadcast) or Cable

* If you are not sure, please select Auto.

If Auto is selected, the program will detect either Air or Cable automatically.

3. Click Auto Scan

Scanned channels will be appeared in the window of scanned channel after searching analog and digital broadcasting channels.

A channel is selected from the scanned channels when the channels are up and down.

Add/Delete Channels

To add channels by manual mode:

1. Input a channel number in the channel box
2. Choose either analog or digital in the mode box
3. Automatically Adding the channel in the “Scanned Channel” box

If Auto is selected, the program will detect a channel either Air or Cable automatically, and the channel is added in the “Scanned Channel” box.

To delete channels:

1. Choose a channel that you want to delete in the “Scanned Channel” box
2. Click delete

Selecting favorite channels

To select favorite channels:

1. Choose a channel number in the “Scanned Channel” box
2. Click >> button

The channel is added in the favorite channel box.

To delete a channel from the favorite channels:

1. Choose a channel number in the “favorite channel box”
2. Click << button

The channel will be delete from the “favorite channel” box.

To change the sequence of favorite channel list, click up/down in the “favorite channel” box.

To set the configure of MyHD program:

1. Click Config in the expanded main control or
2. Click right mouse button/pop-up menu/Config Panel then, Config Panel window will be displayed.

Setting Video Configuration

Resolution

Select full screen(HDTV) mode of MyHD video output.

•1920 x 1080i is recommended if you are using a HDTV or a PC monitor because most of digital broadcast programs are sent on the air by 1920 x 1080i format.

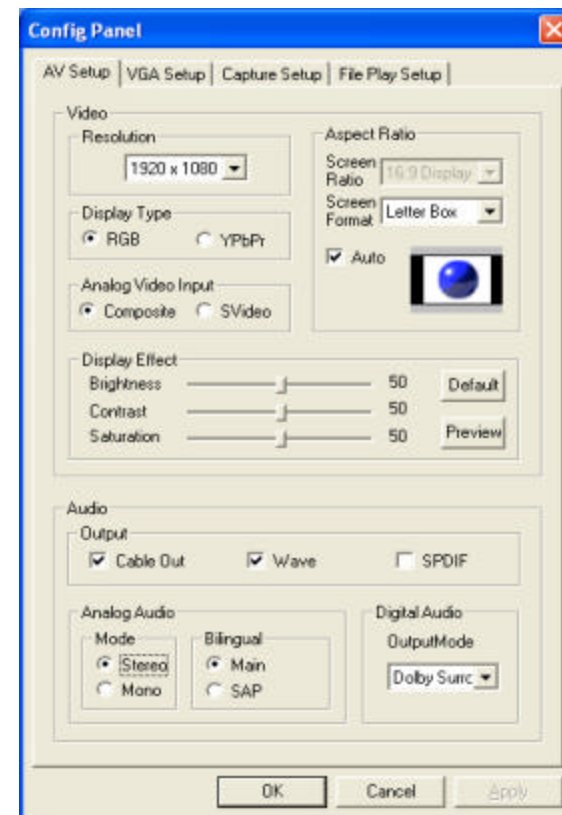
If you are watching an analog TV, please choose 720 x 480i format which is the current format of analog broadcasting programs.

Aspect Ratio

If you choose Auto, screen ratio will be selected automatically. When Auto is selected, you can choose screen format ,zoom or letter box. If screen ratio is different between monitor and stream, Screen ratio is changed as screen format selected.

Screen ratio

If Auto is not selected, you can select screen ratio manually. If video resolution and screen ratio is different, you can change screen ratio fit for monitor.

**Screen format**

To select a screen format of HDTV(full screen) mode, click one of following format:

1. Letter Box:

-Display a HDTV mode to add letter box. by 16:9(or 4:3) in a monitor 4:3(or 16:9)

2. Zoom:

-A screen is filled by a HDTV mode which does not regard screen ratio.

3. Full:

-A screen is filled by a HDTV mode which does regard the vertical and horizontal ratio of a monitor.

* If Auto is selected, only Letter Box and Zoom can be chosen.

Display Type

Choose a video output signal of MyHD either RGB or YPbPr;

RGB for a PC monitor and YPbPr for component output to an HDTV(need a cable for connecting DSUB-15 to RCA).

Analog Video Input

Select either S-Video or composite for the external input connector.

Display Effect

Setting Brightness, Contrast and Saturation of MyHD video output.

To display HD mode, click the Preview button and to exit from the HD mode, hit the “Esc” on the keyboard.

Setting Audio Configuration

Audio Output

1. Cable Out (only for analog broadcasting) :
To use the cable output, audio output of MyHD and a sound card must be connected(refer to Hardware Settings on the page6). If Cable Out is selected, audio output of analog broadcasting is worked by a cable even though Wave is checked.
2. Wave : Audio output of digital broadcasting through a sound card without a cable.
Wave must be selected for Audio output of digital broadcasting.
3. SPDIF: SPDIF is used for an Audio Amp(refer to Hardware Settings on page 10).

Analog Audio

Choose either Stereo or Mono mode.

Bilingual

You can choose Main or SAP only if Mono mode is selected.

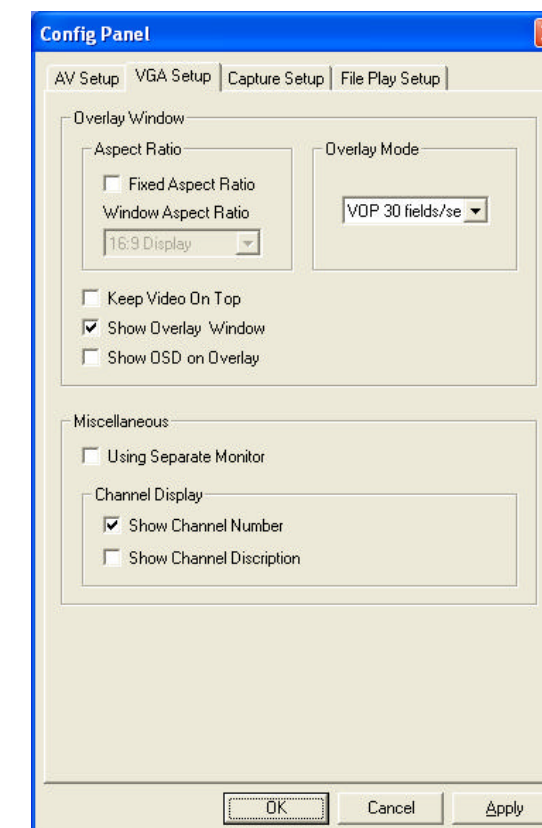
Setting the display options of an overlay window in VGA Setup.

Fixed Aspect Ratio

If “Fixed Aspect Ratio” is selected, the ratio of an overlay window is fixed even size of the window is changed.

Overlay Mode

Setting a mode of an overlay window in Windows.



VOP 30 fields/sec

30 fields of images in a second.

Basic mode of an overlay window

VOP 60 fields/sec

60 fields of images in a second.

This mode will display more smooth motions than 30 fields/sec and it requires higher specification of PC.

(It might not be supported by performances and specifications of graphic card.)

VOP 30 frames/sec

30 frames of images in a second.

Vertical resolution is twice higher than 30 fields/sec.

It requires higher specification of PC.

(It might not be supported by performances and specifications of graphic card.)

VOP 60 frames/sec

60 frames of images in a second.

The best quality of video will be displayed by this mode and higher specification of PC is required. (It might not be supported by performances and specifications of graphic card.)

Keep Video On Top

The overlay window is always displayed over other windows.

Show Overlay Window

Show images in an overlay window.

Using Separate Monitor

To display HD mode in a HDTV and an overlay window in a PC Monitor simultaneously, select this function.

Channel Display

A Channel display mode in main control panel or OSD can be selected among three modes, channel number only, channel description only, both.

Caution – VGA screen is not displayed when “Using Separate Monitor” is selected with connecting the MyHD’s A/V cable. In this case, a monitor cable should be directly connected to VGA Card. Then VGA screen is displayed.

Setting a capture mode.

Transport Stream Capture

Capturing a real time digital broadcasting program into HDD as Transport Stream.

In Detail Setting, a capturing file size can be selected 650MB, 2 GB or Custom.

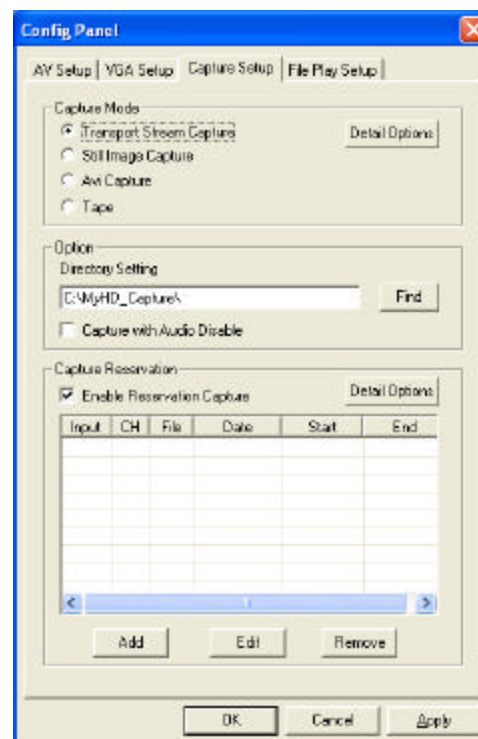
Still Image Capture

Capturing a still image as format of bitmap(.bmp).

Resolution depends on video resolution in A/V settings.

Enable Reservation Capture :

Indicate the execution of reservation capturing.



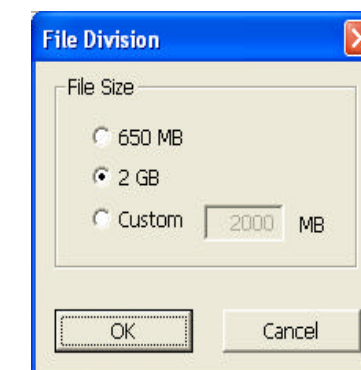
Avi Capture

Capturing a real time digital broadcasting program as an AVI file format

Tape

Recording and replaying digital broadcasting program through AV/C Tape Recorder

(Refer to page 51 for D-VHS record and playback settings)



Avi Capture Option

Audio Recording Input

Selecting an audio recording input of Avi Capture.

Video Compression

Selecting a compressor of video.

Supported compressor: Indeo 5.x

Supported uncompressed mode:

RGB24bpp (RGB 8 bit/pixel)

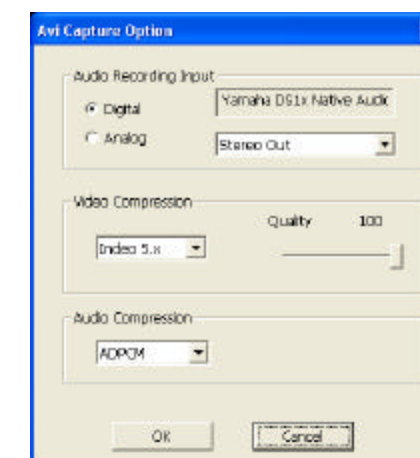
and RGB16bpp (RGB 5 bit/pixel)

Audio Compression

Selecting a compressor of audio.

Supported compressor: ADPCM

Supported uncompressed mode: PCM



Options

Directory Setting

Setting a directory for capturing transport Stream and AVI file.

Capture with Audio Disable

Using this function when broadcasting program is capturing with low specifications of PC.

Reservation Capture Option for Timer Recording

Wake Up From Suspend

Wake up the MyHD program from suspend mode one minute before recording.

Do not exit

MyHD program is still on after recording.

Suspend

MyHD program will be off after recording and then your PC will be in suspend mode.

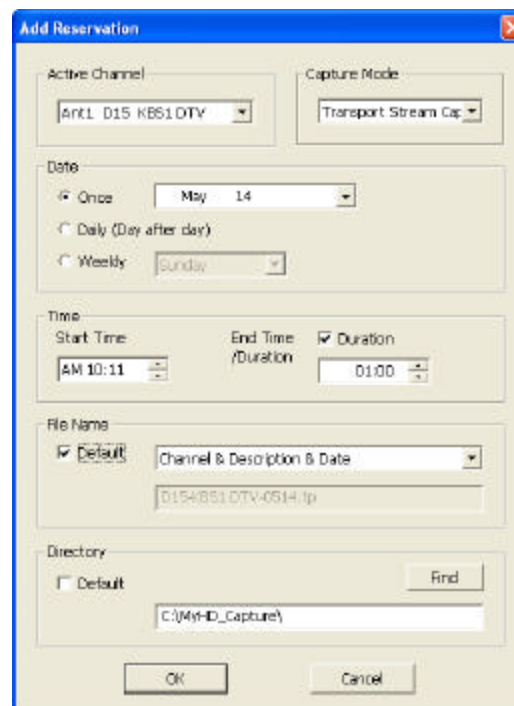
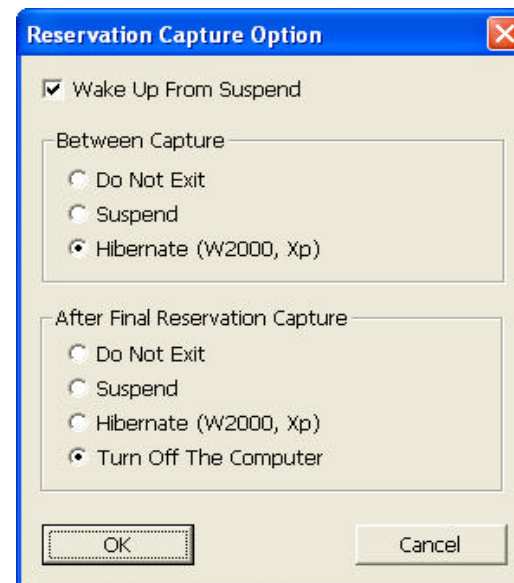
Hibernate

MyHD program will be off after recording and then your PC will be in hibernate mode.

Turn off the computer

MyHD program will be off after recording and then your PC will be turned off.

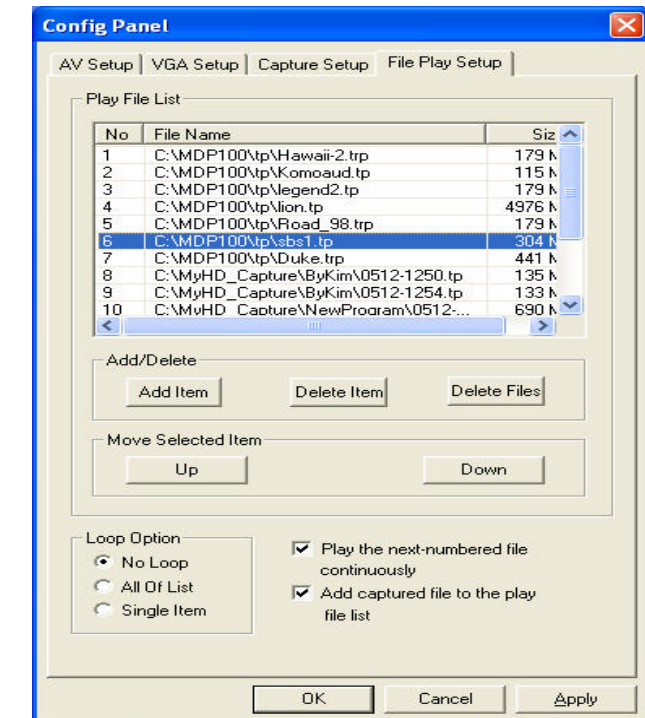
* For adding Reservation, refer to the right window.



To choose a file for replaying by a remote control Handset in a HD mode, go to

“Config Panel”/”Capture File List.”

Then the right window will be Displayed.



Play File List

The Play File List shows the list of files to be played.

Add/Delete

The Add/Delete allows you to add or delete files in the Play File List clicking the Add Item button or Delete Item button. Click the Delete Files button If you want to delete files from your hard disk as well as the Play File List.

Move Selected Item

You can change the order of the Play File List clicking the Up button and Move button.

Loop Option

Select all of list in Loop Option to play repeatedly all files in the Play File List or select single Item in Loop Option to play repeatedly a specific selected file.

Play the next-numbered file

Select this option to play automatically the divided files in the sequence according to the number of their file names. If a current file have a properly numbered file name, the next-numbered file in the same directory will be played automatically and sequentially. If a current file have no properly numbered file name, a file with a properly numbered name like "filename_01.tp" will be searched in the same directory. if such a file does exist the file will be played automatically and sequentially. Otherwise the next item in the Play File List will be played. this rule is identically applied to VOB Files.

Add captured file to the play file

You can select it to add the captured file to the Play File List.

The files are played in order of the Play File List. To play a specific file, Select and Double Click the file. If a file is divided and captured (example : a.tp, a_01.tp, ...), it is only necessary to add the first divided and captured file to the Play File List.

If you push the Previous/Next button of the remote control in the Full Screen Mode, the Play File List is displayed on the screen. And you can play the file you select using the Channel button in the Play File List on the screen.

You can watch the DVD files(*.vob) in the HD Resolution Mode of the MyHD Card. To play sequentially several VOB files in the DVD, select the "Play the next-numbered files" option, add VTS_01_1.VOD file to Play File List and play it. Then, the next-numberd files will be played automatically and sequentially. (At present, the limited function is provided only to play the VOD files not copy protected because of the license of DVD with copy protection.)

Setting Channels

Select channels

Entering numbers by keyboard or push numbers on the MyHD's remote control Handset.

Changing channels

To change channels :

1. Using channel buttons in the main control panel
2. Using arrow keys in a keyboard
3. Using channel buttons of the remote controller

Changing Sub-channels

If there are sub-channels in digital broadcasting, sub-channel can be selected by using sub-channel button in the main control panel or the remote controller.

Favorite channel mode

To select favorite channels, using channel settings or a favorite channel button in the remote controller.

Controlling Volume

To control volume:

1. dragging the knob in the main control panel
2. using left/right arrow keys in a keyboard
3. handling volume button in the remote controller

Changing Input Type

To change the input Type;

1. Using input button in the remote controller
2. Click "In" key in the main control panel
3. Click right side button of a mouse

Storing Transport Stream into a HDD

MyHD supports capturing Transport Stream and stores the stream into a HDD to display images any time.

If audio is not working properly during capturing, DMA mode should be selected in a HDD.

For the perfect capture, we recommend the PC system that is Pentium III 800MHz or higher specifications.

During capturing, the size of file is automatically divided into 650MB or 2GB, and files are created continuously. For example, Capture.tp, Capture_01.tp, Capture_02.tp, and so on.

The captured files will be played continuously by numbers when they are replayed.

Replay the Captured Transport Stream files

From VGA mode

1. Using file open in the main control panel
2. Clicking the right side button of a mouse, and selecting "File" in the pop up menu
3. Using Drag & Drop method

From HD mode

Using the remote controller to replay the files when HD mode is played.

1. Add files in "Play File List" from "Config Panel"/"Capture File List"
2. Push the next file button or the previous file button in the remote controller
3. Use the play button to replay.

Using Esc button in the remote controller to exit or cancel.

To storing Transport Stream, Transport Stream Capture must be selected from “Config Panel”/”Capture Setup”/”Capture Mode.”

Capturing

Use the record button on the remote controller or the capture button in the main control panel for storing the stream into a destined file.

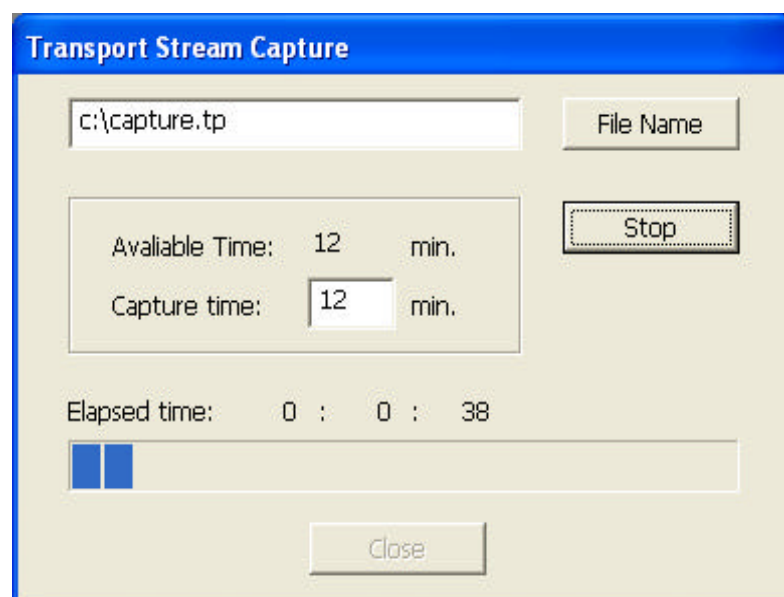
To stop the capturing, use the record button on the remote controller or the capture button in the main control panel again.

The record button on the remote controller can be used for capturing in HD mode.

Transport Stream Capture after Capture time is selected

To decide a capturing time, select Capture from the below pop-up menu.

1. Type a desired capturing time in the Capture time box.
2. If you type “0,” the capturing will be executed as long as possible.
3. To stop the capture, use stop button on the remote controller.



Avi Capture

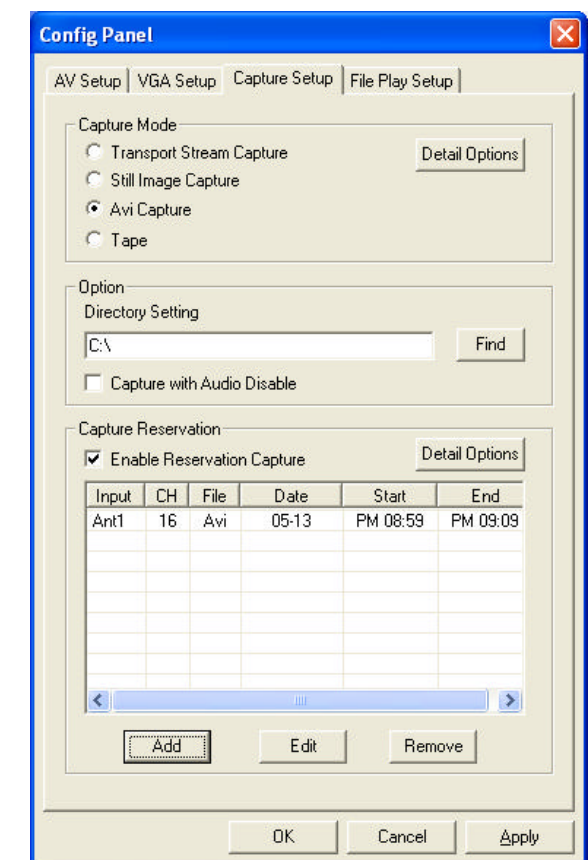
To execute Avi capture, select “Config Panel”/”Capture Setup”/”AviCapture.”

Capturing

Use the capture button in the main control panel or the record button on the remote control Hanset To record broadcasting program as an avi format.

File names are automatically selected by the following format (“MMDD-HHmmss.avi” , MM:month, DD:date, HH:hour, mm:minute, ss:second).

To stop the capturing, use the same method with capturing transport Stream.

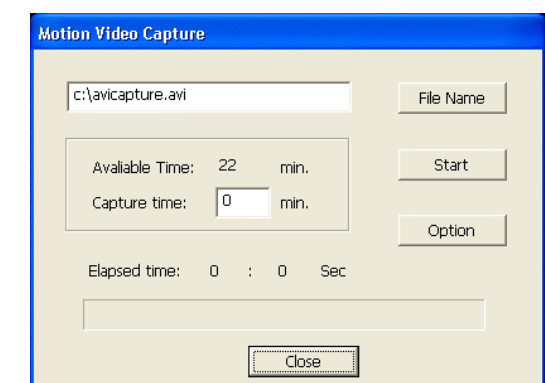


Avi Capture after Capture time is selected

Execute same method with Transport Stream Capture after Capture time is selected .

During Avi capture, the size of file cannot be limited.

The captured avi files can be replayed through Windows Media Player.



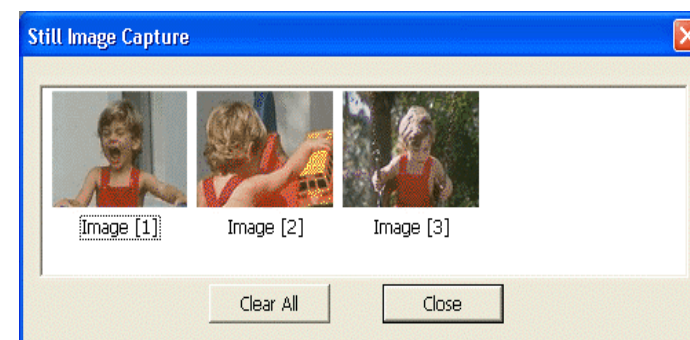
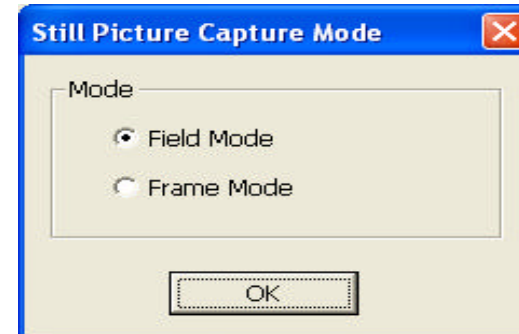
Still Image Capture

Still Image Capture is capturing a still image as a file of bitmap.

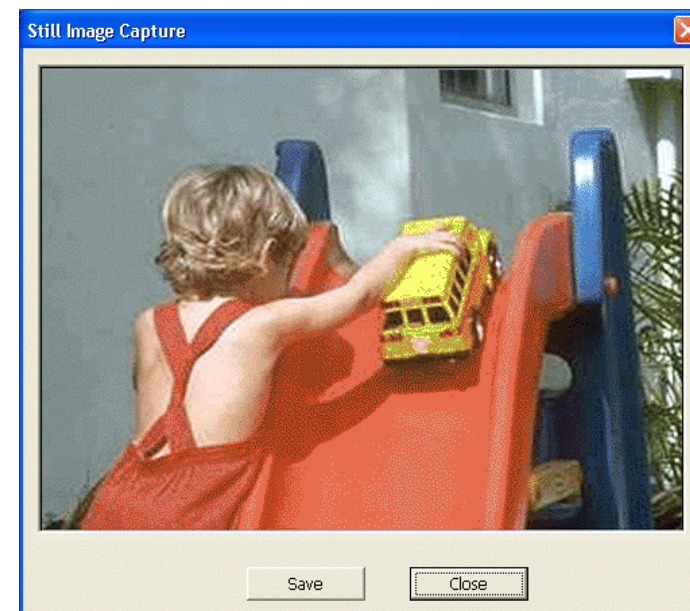
To execute Still Image Capture, select “Config Panel”/”Capture Setup” then check the box of “Still Image Capture.”

In Detailed Options, either Field or Frame Mode can be selected.

When the capture button, capture menu, or record button is used, following images are displayed in a window as small images(example).



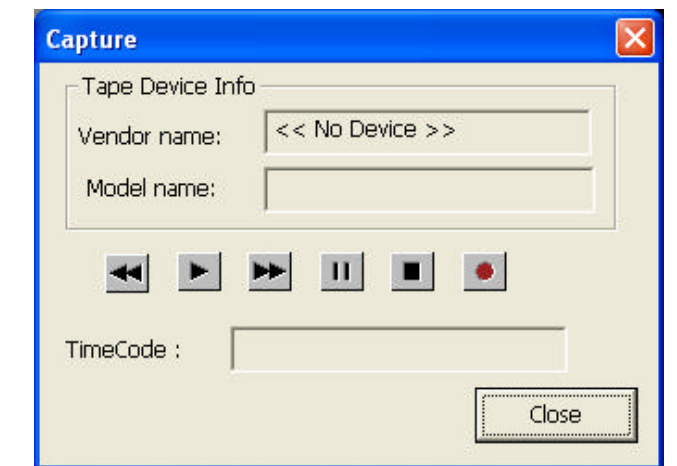
To view a large image, double click the small image.
Click Save to store the image as a bitmap file.



Tape Record

For Tape recording;

1. Select ”Config Panel”/”Capture Setup”/”Tape”
2. Click “Capture” from pop-up menu, or
3. Use the main control panel



HD Mode & Overlay window Mode

MyHD supports output of graphic card and HD output in a monitor (refer to page 8 for Hardware Settings)

To view the HD mode;

1. Select HD mode from the pop-up menu, or
2. Click HD button in the main control panel, or
3. Double click the left side button of a mouse on the overlay window

To exit the HD mode;

1. Double click the left side button of a mouse, or
2. Hit Esc key in a keyboard

To use the remote controller;

HD mode and an overlay window mode is worked by HD button on the remote controller.

Tape(D-VHS) record and playback Settings

*** It is working on Windows XP only.**

For settings of VCR driver

1. Two new hardware found boxes will be displayed when a D-VHS is connected to your XP machine via firewire.
2. Install software for "AV/C Tape Recorder>>Player." Do not install software for "AV/C Tuners."
3. Choose "Install from a list or specific location(Advanced)."
4. Click "Next>"
5. Choose "Don't search, I will choose the driver to install."
6. Click "Next>"
7. Select "Sound, video and game controllers" option and click "Next."
8. If you have a JVC Victor HM-DH30000, select "JVC" as the manufacturer and "JVC Tape Device" as the model and click "Next>."
9. Click "Finish."
10. JVC D-VHS tape deck is ready to use by DirectShow applications.

For recording

1. Execute MyHD program, then click right mouse button.
2. Select "Config Panel>>Capture Setup>>Tape"
3. Click "apply>>OK"

Then choose either a or b method during broadcasting.

- a. Click "recording button" on the remote controller or main panel.
- b. Click right mouse button, then select "menu>>Capture(Ctrl+C)."

Popup window will be appeared, then click "Recording" after searching a right position of recording tape by the button of "Rew/FF."

For replaying

1. Select "menu>>Tape(Ctrl+D)," then "Tape" will be displayed in the main control panel.
2. Use Play/FF/REW buttons for playback.

-When video output does not work because programs or settings are changed during playing, Click "stop" then "play" button.

-If record/playback executes on MyHD program, the power of VCR will be "ON" even though it is "OFF."

-"Time Record" is available even though the power of VCR is "OFF."