

FCC RF INTERFERENCE STATEMENT

NOTE:

This equipment has been tested and found to comply with the limits for a Class B digital device, pursuant to Part 15 of the FCC Rules. These limits are designed to provide reasonable protection against harmful interference in a residential installation.

This equipment generates, uses and can radiate radio frequency energy and, if not installed and used in accordance with the instructions, may cause harmful interference to radio communications. However, there is no guarantee that interference will not occur in a particular installation.

If this equipment does cause harmful interference to radio or television reception which can be determined by turning the equipment off and on, the user is encouraged to try to correct the interference by one or more of the following measures.

- Reorient or relocate the receiving antenna.
- Increase the separation between the equipment and receiver.
- Connect the equipment into an outlet on a circuit different from that to which the receiver is connected.
- Consult the dealer or an experienced radio, TV technical for help.
- Only shielded interface cable should be used.

Finally, any changes or modifications to the equipment by the user not expressly approved by the grantee or manufacturer could void the users authority to operate such equipment,



MyHD Hardware Installation

-PC Platform Requirements-

To achieve optimum performance of the **MyHD** Board, your PC requires a following minimum configuration.

- ◆ **CPU** : Pentium-II 333MHz or faster
- ◆ **DRAM** : 64 Megabytes or more
- ◆ **System Bus** : PCI
- ◆ **OS** : Windows 98SE, Windows ME , Windows 2000, Windows XP
- ◆ **Other Software** : DirectX Media 7.0 or Higher
- ◆ **Graphic Card** : DirectX compatible VGA card(8 MB memory or more recommended)
- ◆ **One Available PCI Slot**
- ◆ **One 9-pin serial port**

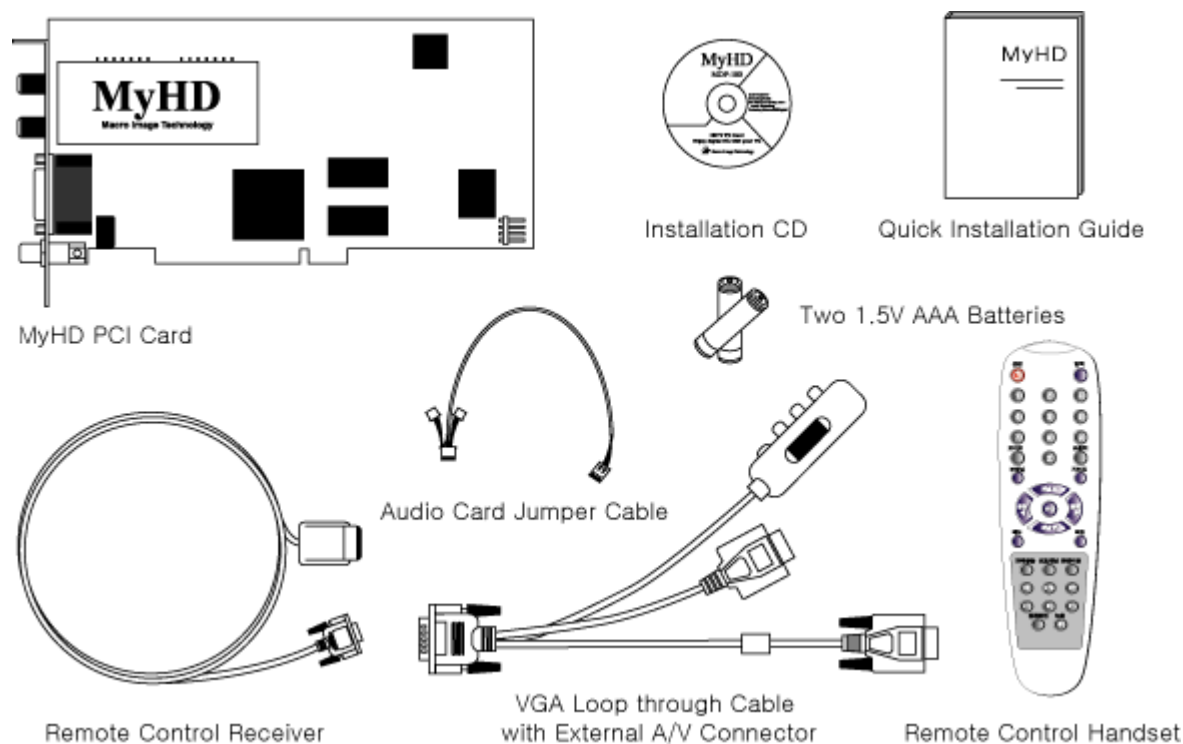
*For digital transport stream(ATSC) recording and playback, minimum system requirements are as follows:

- ◆ **CPU** : Pentium-III 800MHz or faster
- ◆ **All the other requirements are the same as the above configuration.**

MyHD Package List

This package is including :

- MyHD PCI Card
- Quick Installation Guide
- VGA Loop through Cable with External A/V Connector
- Remote Control Handset
- Remote Control Receiver
- Installation CD
- Audio Card Jumper Cable
- Two 1.5V AAA Batteries



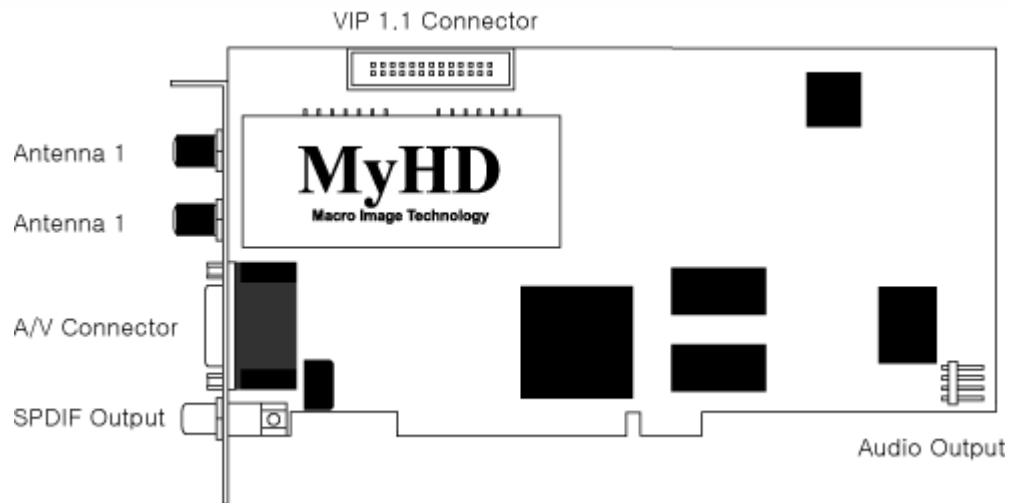
Hardware Installation Overview

To install **MyHD** on your Windows 98SE, Windows ME, Windows 2000, or Windows XP system:

- ◆ Turn off your PC, install the MyHD PCI card, connect the audio jumper cable as needed, and connect the Remote Control Receiver to a serial port on your PC.
- ◆ Connect the MyHD PCI card to an external video source and display devices as desired.

- ◆ Turn on your PC and install the MyHD Windows device driver from the installation CD, then install the MyHD application software.
- ◆ If DirectX 7.0 or higher version is not installed on your PC, install the latest version of DirectX before the installation of the MyHD device driver.

MyHD Board Diagram



◆ Antenna 1

Recommend to connect the antenna lead from your rooftop antenna

◆ Antenna 2

Recommend to connect the antenna lead from your cable antenna

◆ A/V Connector

Connector to connect A/V cable

◆ SPDIF Output

Allows the digital audio output of the MyHD card to be connected to an external audio amplifier.

◆ Audio Output

Allows the analog audio output of the MyHD card to be connected to the LINE IN, AUX or CD input of your PC sound card or motherboard (using the enclosed jumper cable).

◆ VIP 1.1 Connector

This connector is not currently working.

Installation of MyHD Board in a PC



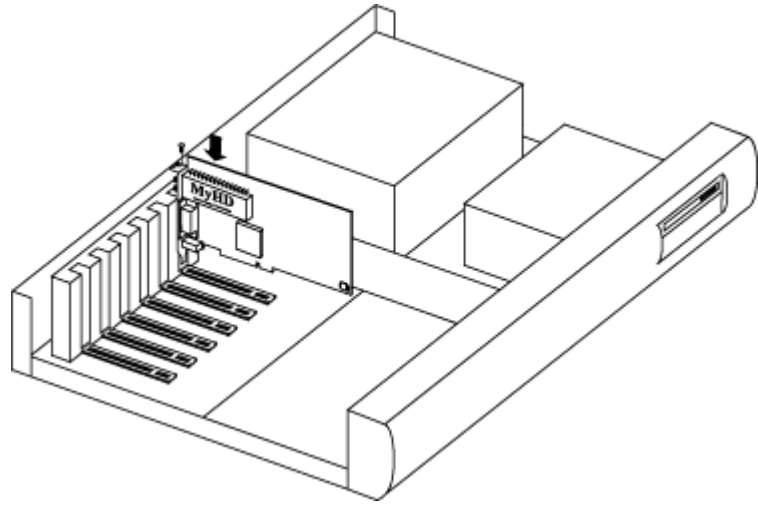
Warning - Static Sensitive Components

To avoid possible damage to MyHD Board and/or other system components from static discharge, always discharge your body's static electricity prior to handling MyHD Board or other system components.

Discharging can be done either by using a properly grounded anti-static wrist strap or by simply touching the chassis of a grounded (plugged-in) computer. In addition, always handle the card by its edges whenever possible, to avoid mechanical damage to delicate components on the board.

To install the **MyHD** board, follow the steps listed below:

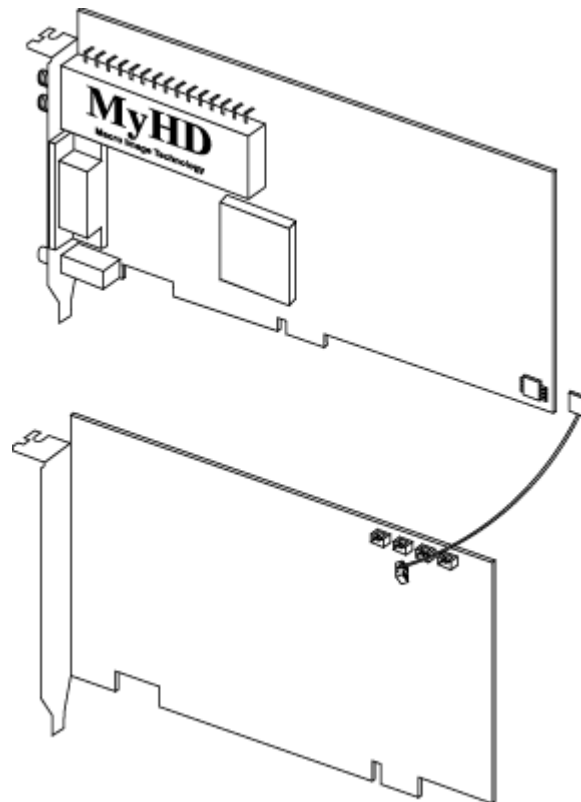
1. With the power off, remove your computer cover and locate an available PCI slot.



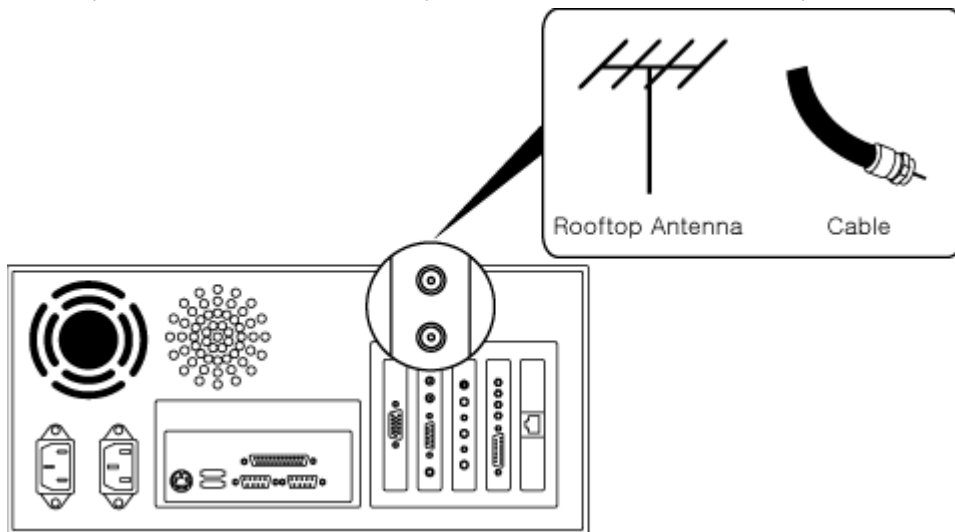
2. Remove the screw attached to the slot cover and remove the slot cover plate.
3. Before handling the **MyHD** card, ground yourself by touching the power supply box inside your computer
4. Position your card directly above the PCI slot and insert the card firmly into the slot. Care should be taken to press it evenly and snugly into its slot.

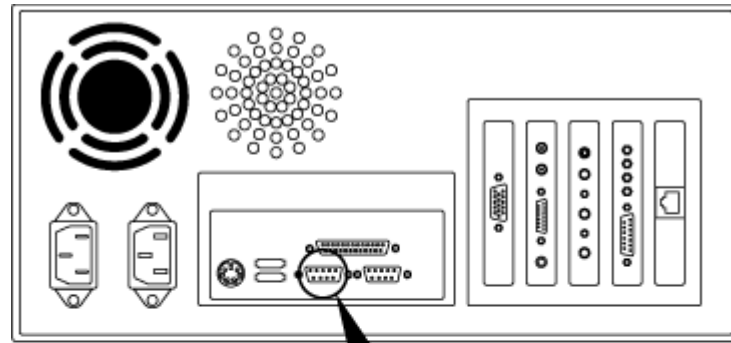
5. Use the enclosed jumper cable to connect the audio output of the MyHD card to the LINE IN, AUX or CD input of your PC sound card or motherboard.

**If the audio output is set by the jumper cable in the MyHD application program, you have to connect the jumper cable between the MyHD card and a sound card. However, you do not need to do it when the audio output is set by wave in the MyHD application program. ([Refer to Audio Configuration](#)).

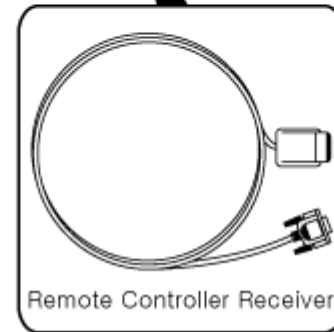


6. Replace the cover on the computer.
7. Attach the antenna lead from your rooftop antenna or cable system to the antenna input of the MyHD card.



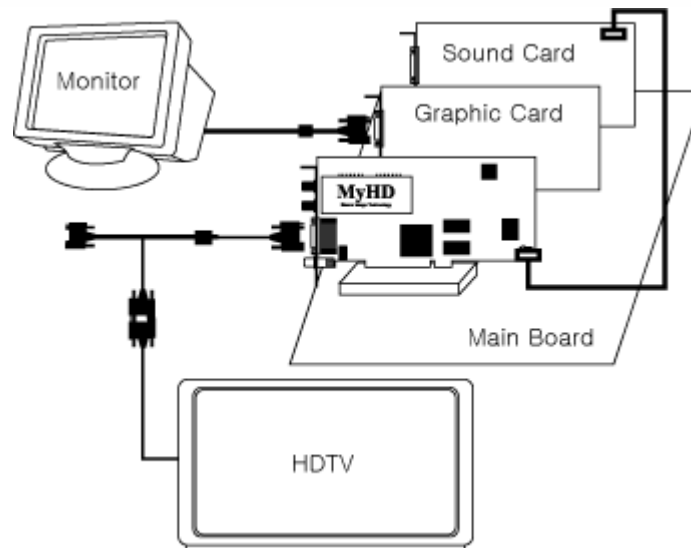


8. Connect the remote control receiver to 9-pin serial port.



Choose your display configuration

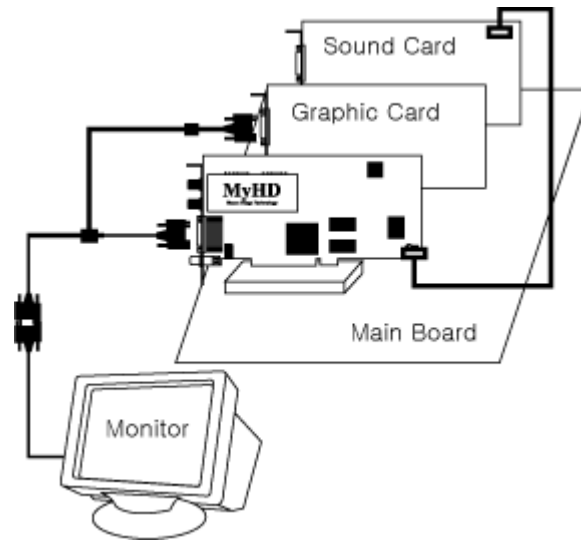
Dual Monitor Configuration



◆ A dual monitor configuration displays the standard Windows desktop on your PC monitor along with full-screen output from your MyHD card on a separate HDTV or VGA monitor. MyHD supports the following resolutions and horizontal frequencies on any monitor equipped with standard RGBHV or YPbPr inputs:

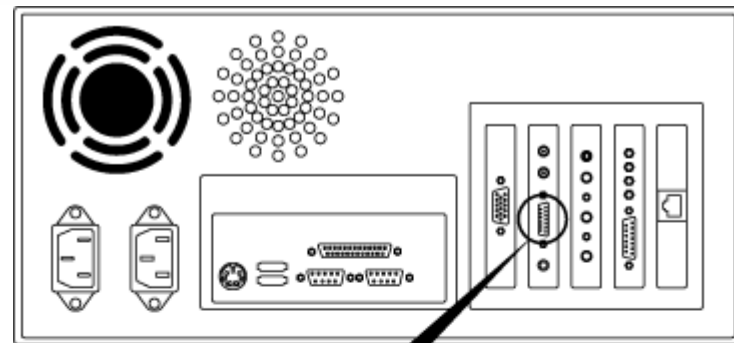
- 1080i(1920x1080 interlaced, 33.7kHz)
- 1024p(1024x768 progressive, 48.3kHz)
- 720p(1280x720 progressive, 44.9kHz)
- 480p(720x480 progressive, 31.5kHz)
- 480i(720x480 interlaced, 15.75kHz)

Single Monitor Configuration

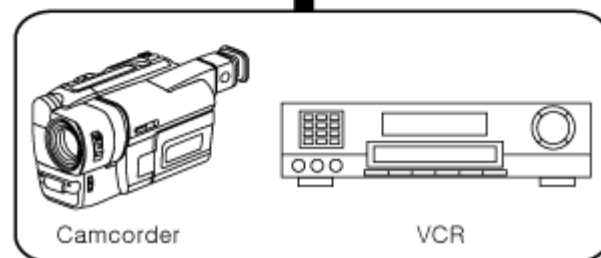
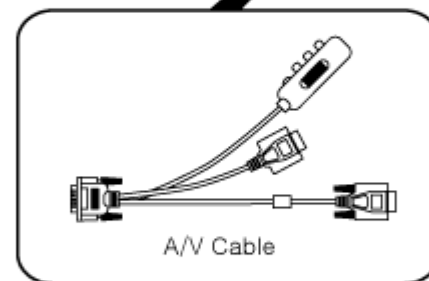


◆ A single monitor configuration displays the output of your MyHD card in either a resizable window or full-screen (giving you the ability to switch between the regular Windows desktop and MyHD's full-screen display), by using the enclosed VGA loop through cable with external A/V connector as shown (connecting the VGA output of your PC to the MyHD card, which then passes the combined video signals to your PC monitor).

Optional External Hardware Connections



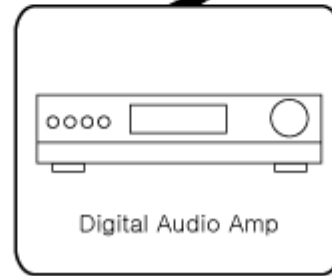
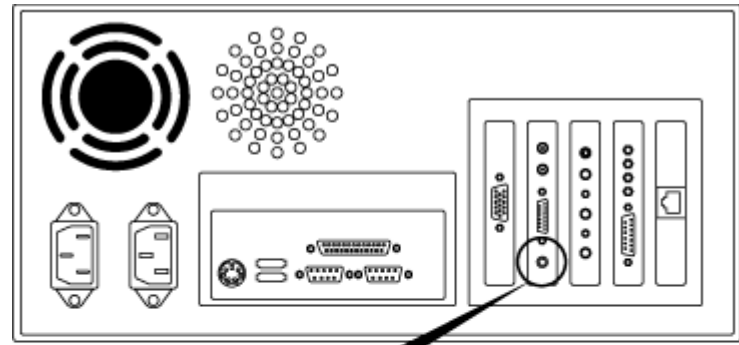
◆ You can watch and capture video from any external source (including VCR, DVD, laserdisc, etc.) by connecting them to the VGA loop through cable with external A/V connector. Simply connect the video and audio outputs from your external source to the S-Video and/or RCA input jacks.



Connection of Digital Audio Amp

◆ MyHD also supports SPDIF for digital audio output. Simply connect a digital audio cable from the RCA output jack on the MyHD card to the SPDIF input of any Dolby AC-3 5.1 channel

audio amplifier.



MyHD Program Installation

-Installing the MyHD Device Driver for Windows 98/Me



◆ After your hardware installation has completed, turn on your PC and insert the installation CD. As Windows begins to boot, it will automatically open the "Add New Hardware Wizard" once it detects your addition of the MyHD card:

Click on "Next >".



◆ Choose "Search for the best driver for your device.(Recommended)" and click on "Next >".

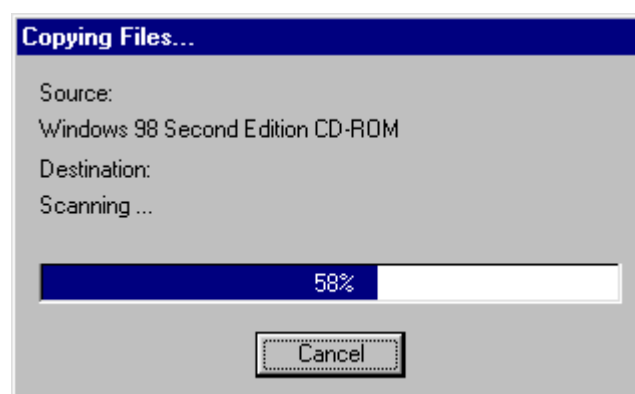


- Choose "Specify a location" and then click on "Browse" to open the contents of the installation CD, navigate to the DRIVER folder, and choose the subdirectory for the version of Windows currently installed on your computer and click on "Next >".

Note: you must choose the driver which matches your operating system as software designed for one version of Windows may not operate properly on another.



- Click on "Next >" if MyHD driver is searched.

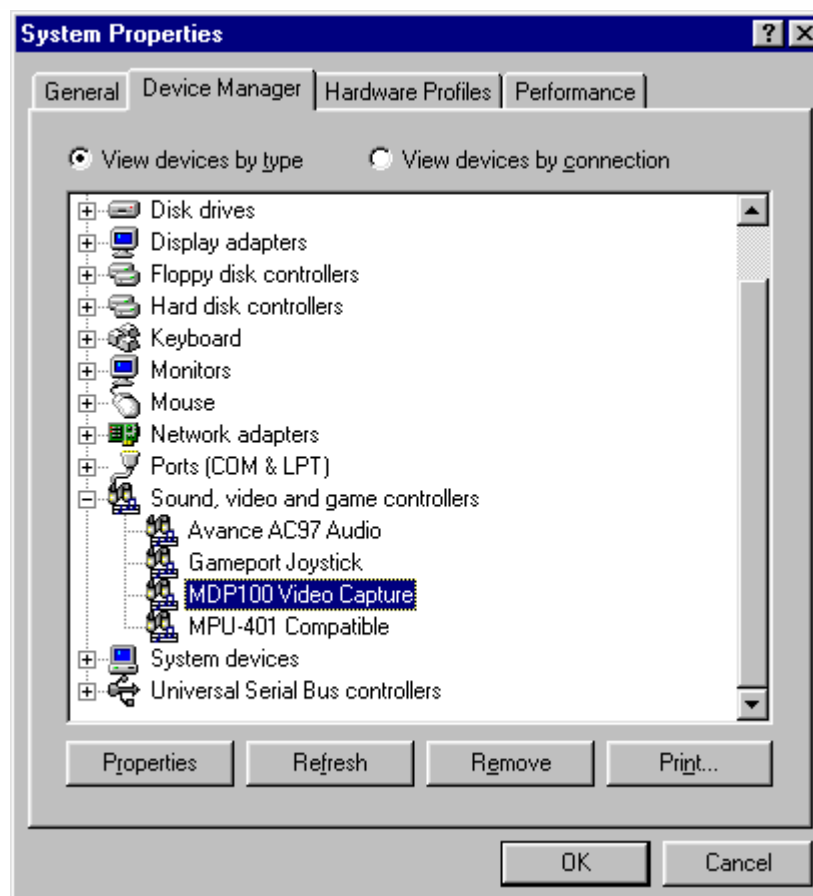


- Copying Files...

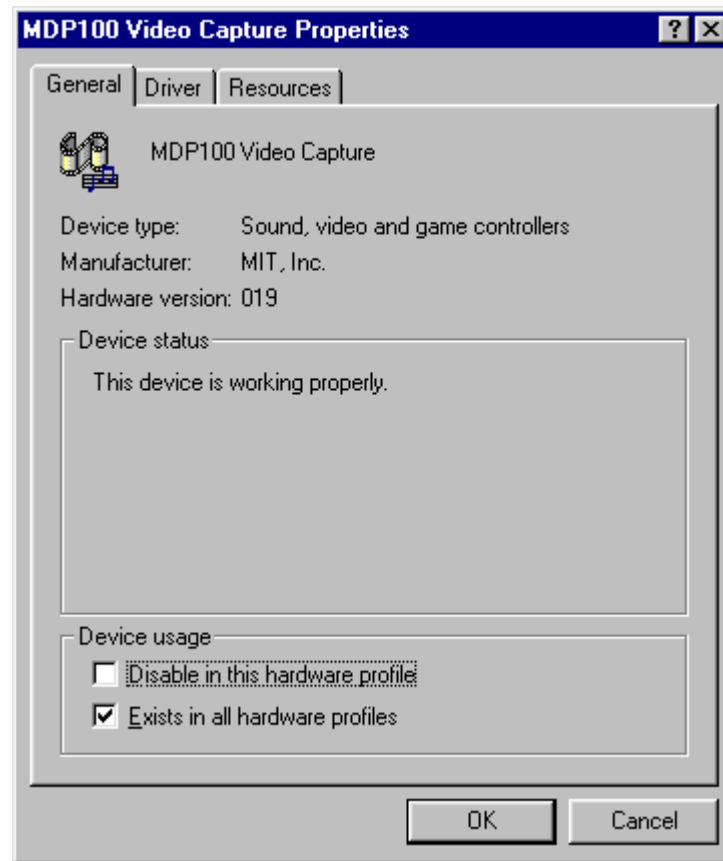


- After the installation has completed, click on "Finish".

Confirming the Installing MyHD Device Driver



- To confirm the installing MyHD in device manager,
 1. Choose "Control Panel"/"System"/"Device Manager".
 2. Click "Sound, video and game controllers" and then confirm the category of "MDP100 Video Capture".



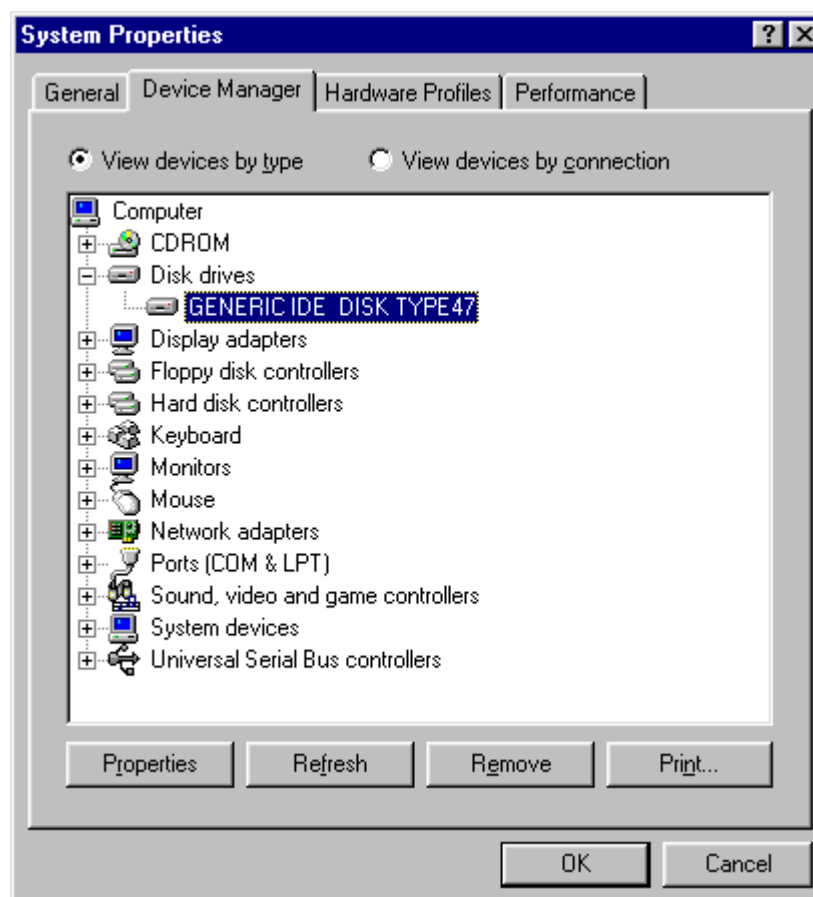
♦Choose;

1. "MDP100 Video Capture Properties"
2. "General"

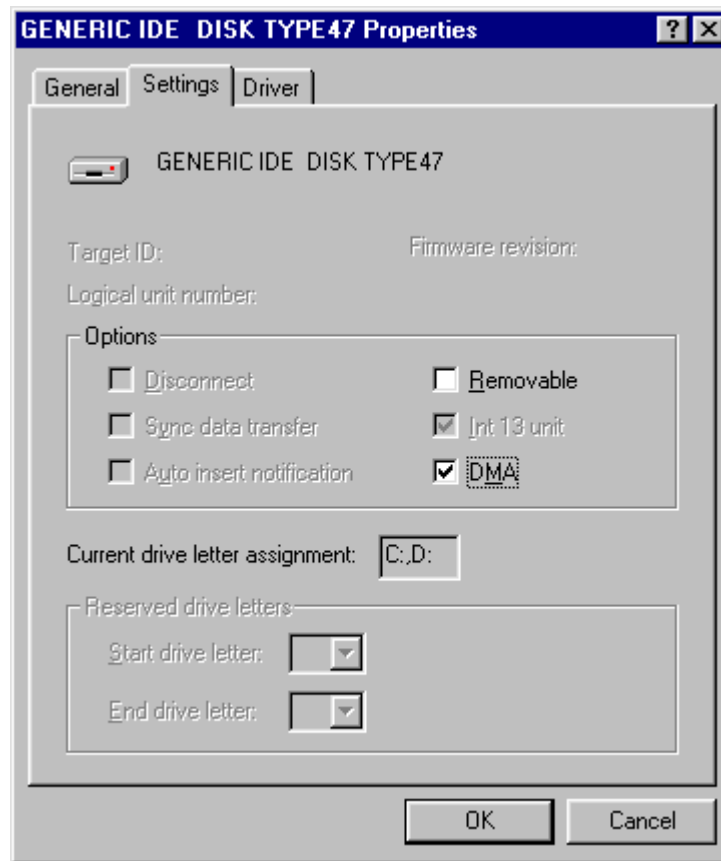
Confirm the phrase of "This device is working properly" in device status.

If the phrase is not shown, please install the MyHD device driver again.

Setting DMA



1. Choose "Control Panel"/"System"/ "Disk drives"
2. Click "GENERIC IDE DISK...".



♦Choose;

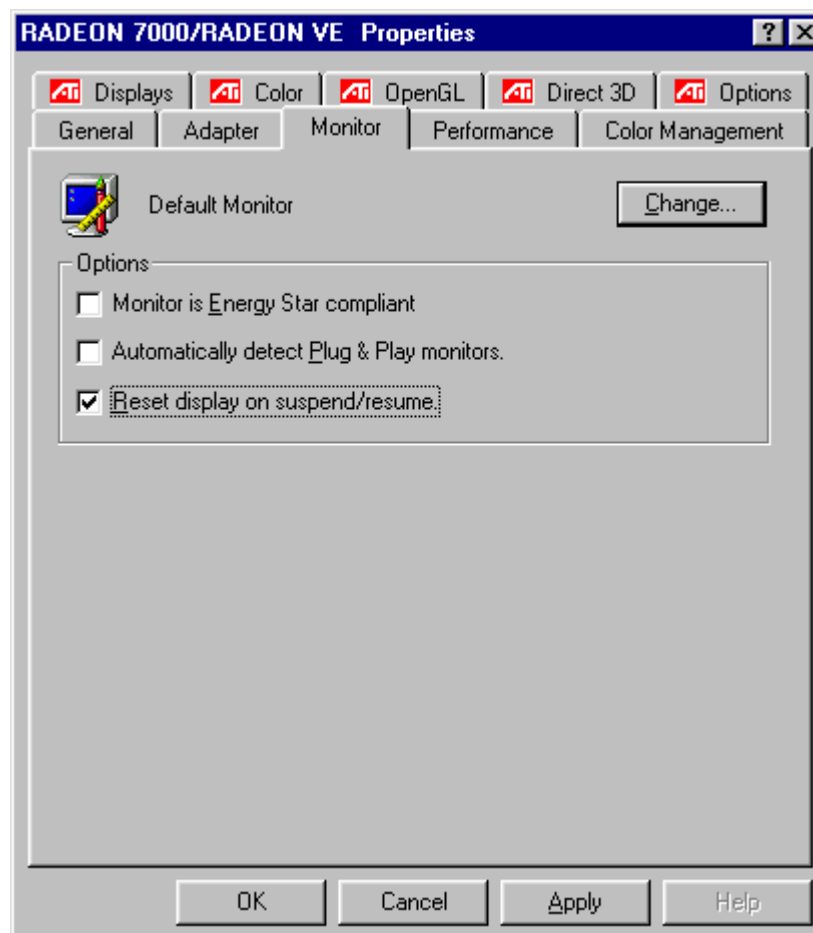
1. "GENERIC IDE DISK...Properties"

2. "Settings"

Confirm the "DMA" in options.

If the "DMA" is not checked, please check the "DMA".

Setting Windows Environment



♦If the monitor is connected to VGA card through VGA loop through cable with external A/V connector, confirm display properties.

1. Choose "Control Panel"/"Display".

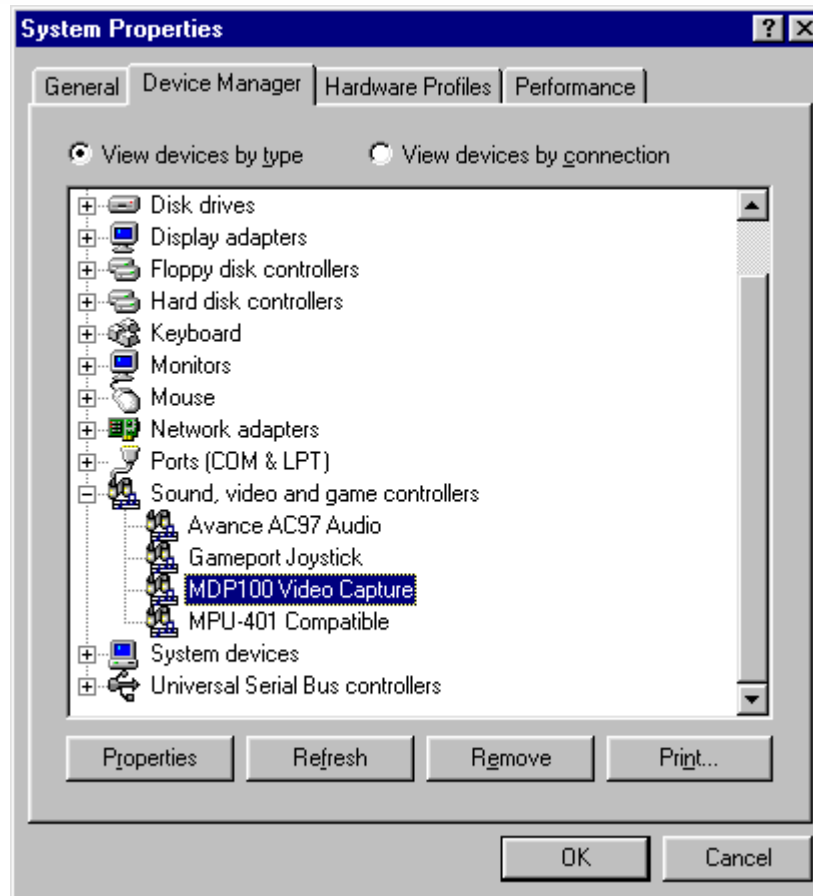
2. Choose "Settings"/"Advanced" in display properties.
3. Choose "Monitor" and then uncheck "Automatically detect Plug & Play monitors".



Warning

Don't change resolution of screen area in "display properties"/"settings" while the MyHD program is executing.

Updating Device Driver



♦ You can download new device driver in our homepage(www.DTVsolution.com).

1. Choose "Control Panel"/"System"/"Device Manager".
2. Click "Sound, video and game controllers" and then confirm the category of "MDP100 Video Capture".



◆ Choose

1. "MDP100 Video Capture Properties"

2. "Driver"

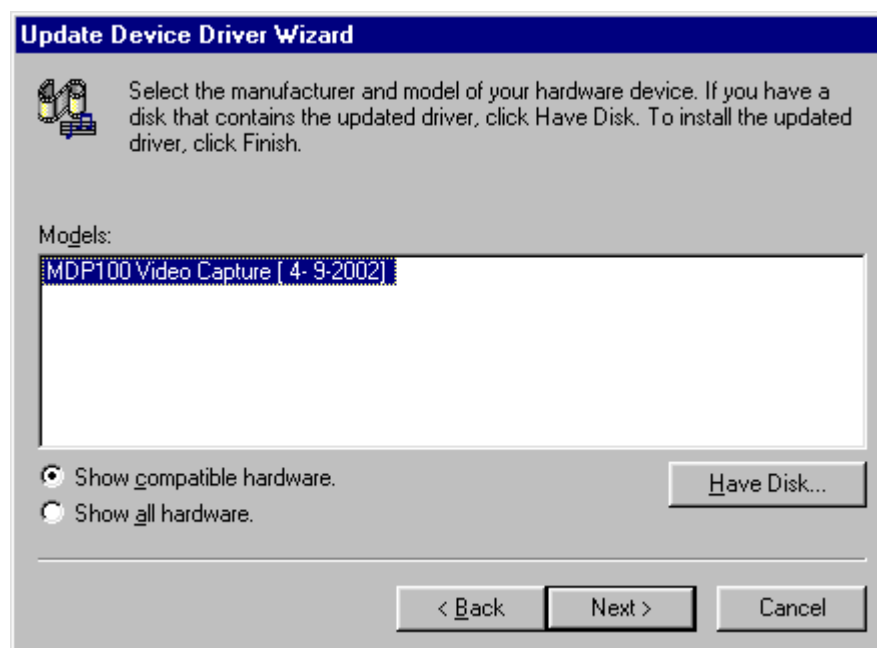
Click on "Update Driver...".



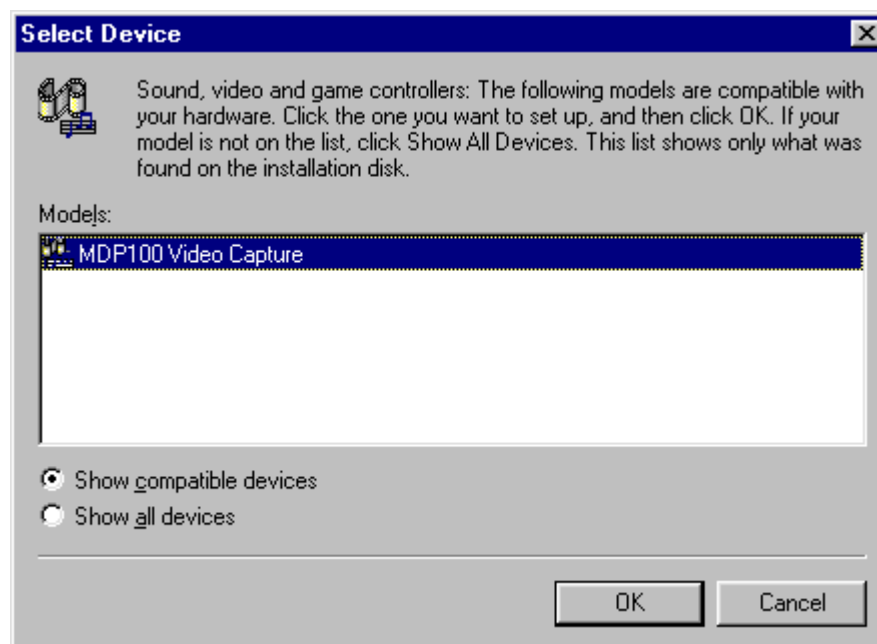
◆ As "Update Device Driver Wizard" is displayed, click on "Next >".



- ◆ Choose "Display a list of all the drivers in a specific location, so you can select the driver you want." and click on "Next >".



- ◆ Choose "Show compatible hardware" and then click on "Have Disk..." to browse to the driver folder and click on "Next >".



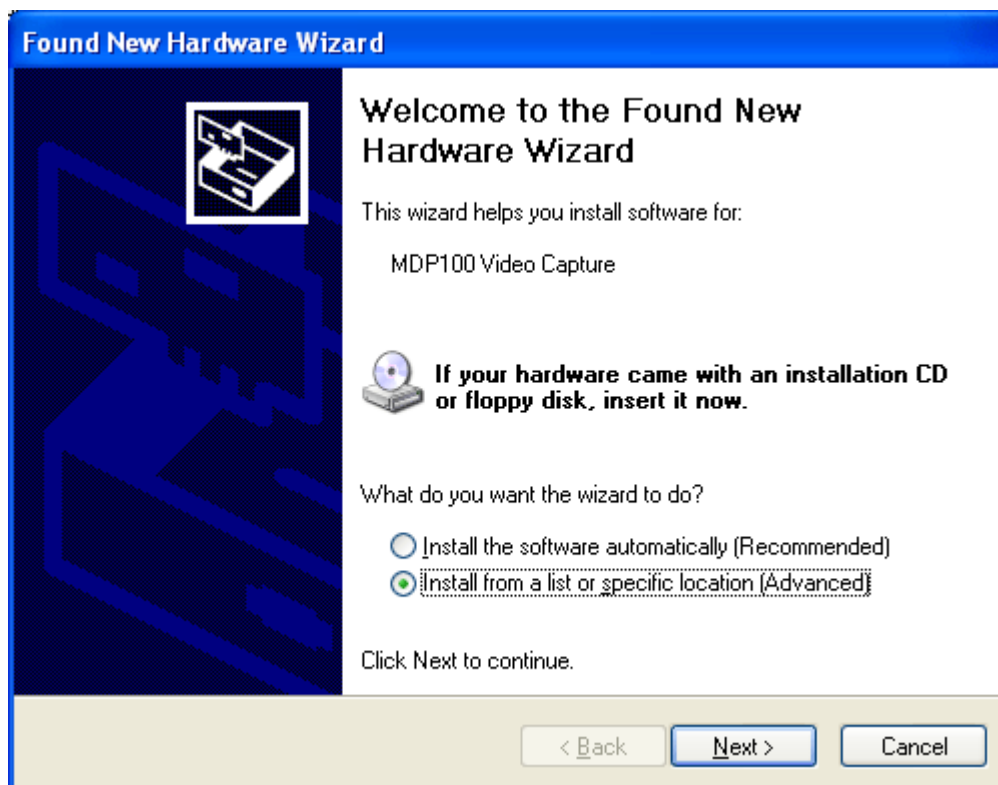
- ◆ Choose "Show compatible devices" and then click on "Next >".



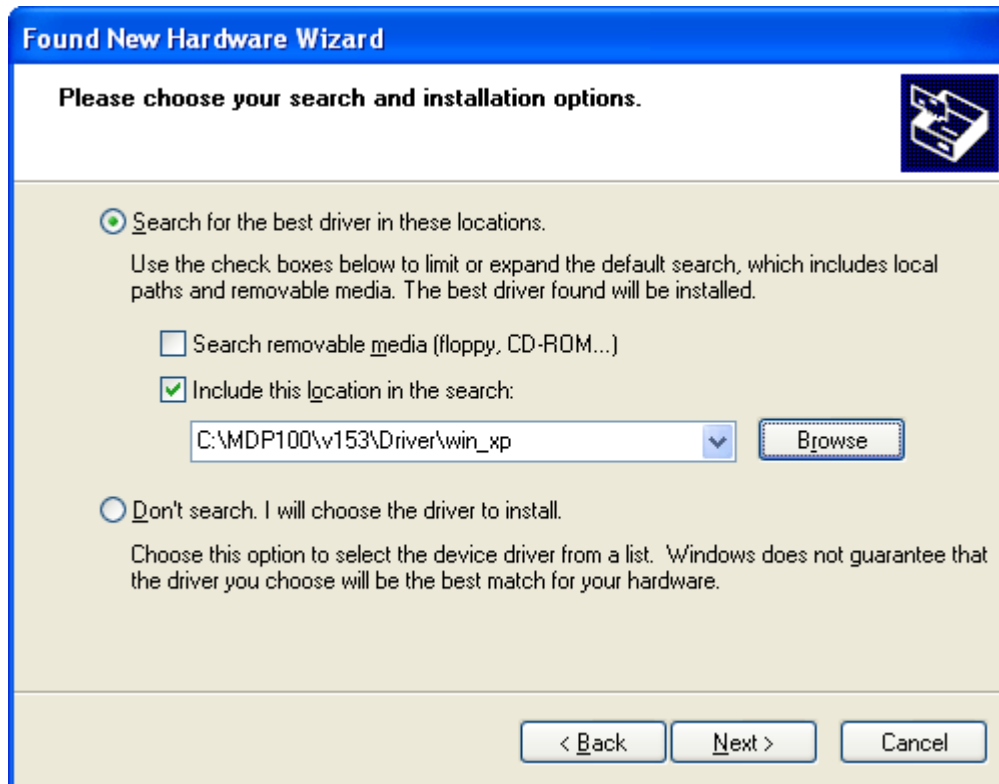
- If location of driver is correct, click on "Next >". When the installation is complete, click on "Finish."

Installing the MyHD Device Driver for Windows XP

After your hardware installation has completed, turn on your PC and insert the installation CD. As Windows begins to boot, it will automatically open the "Found New Hardware Wizard" once it detects your addition of the MyHD card:



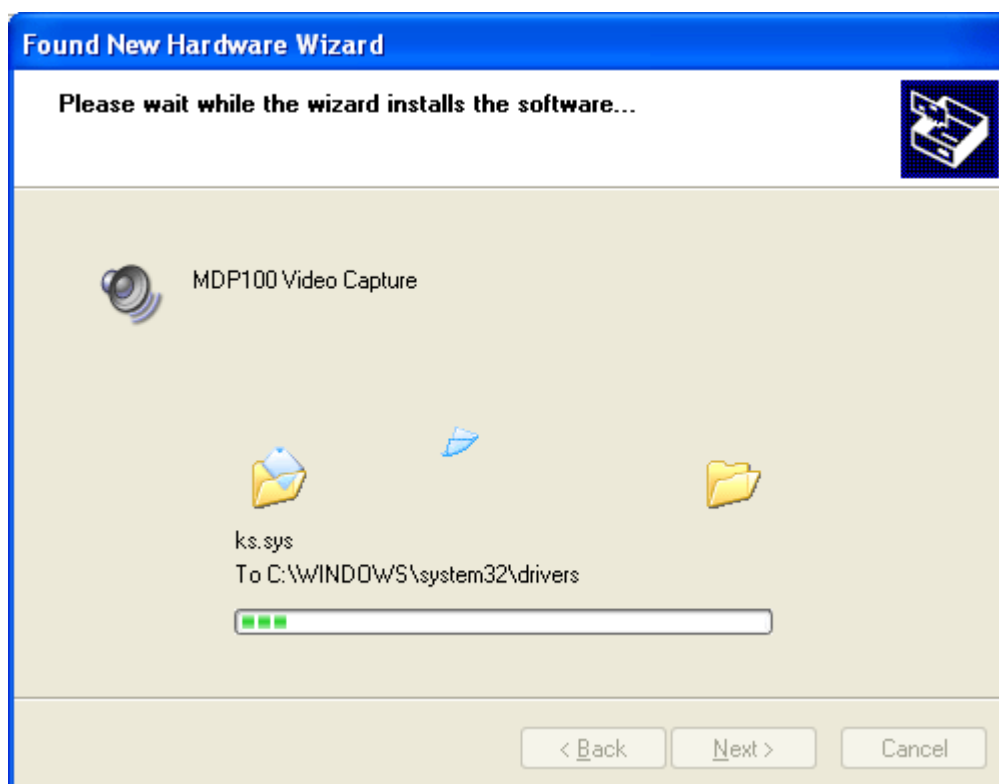
- Choose "Install from a list or specific location (Advanced)" and click on "Next >".



• Choose "Search for the best driver in these locations" and "Include this location in the search," then click on "Browse" to open the contents of the installation CD, navigate to the DRIVER folder, and choose the subdirectory for the version of Windows currently installed on your computer and click on "Next >".

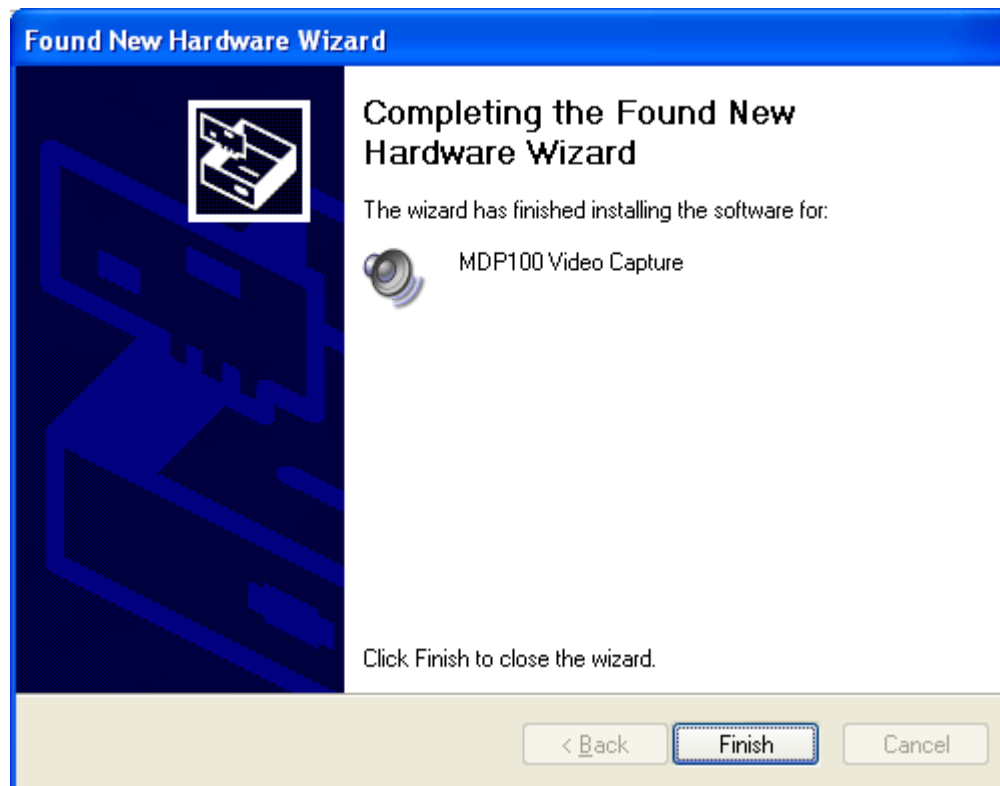


Note: you must choose the driver which matches your operating system as software designed for one version of Windows may not operate properly on another.



• Click on "Next >" to install the driver.

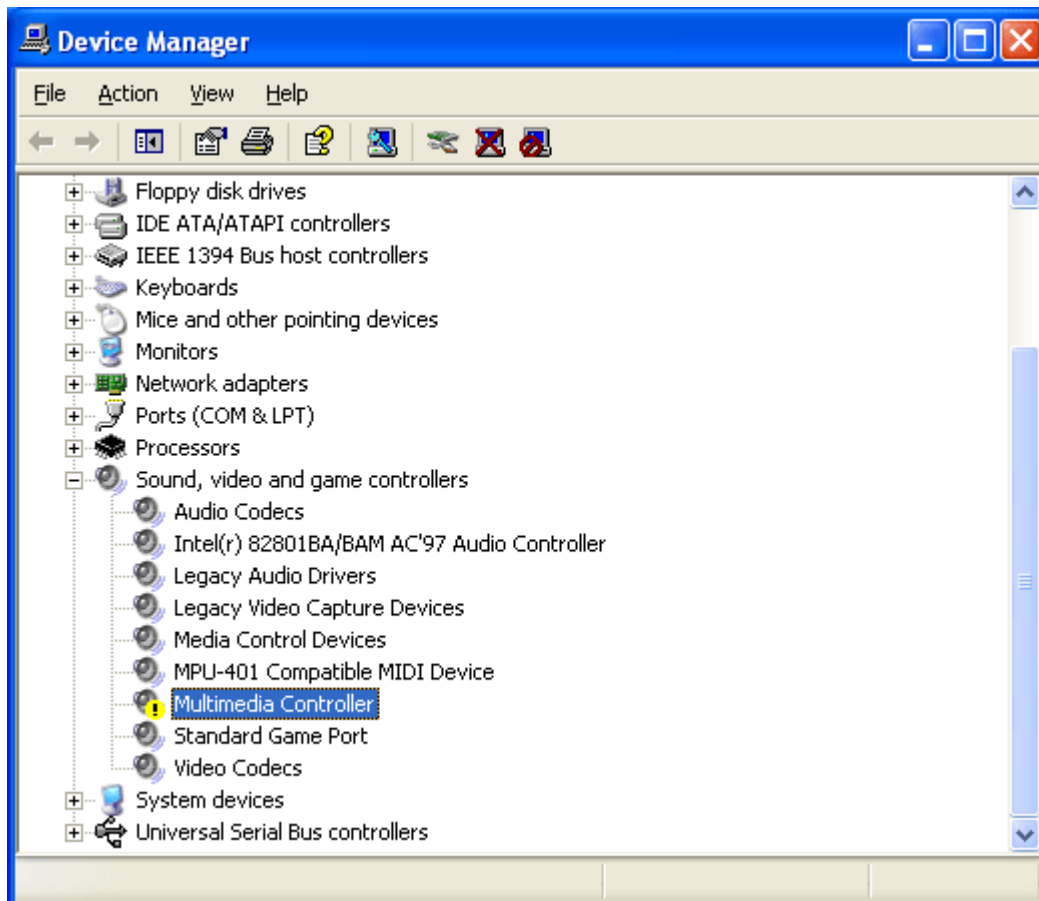
Next message box can appear while installing the driver. Since its not a setup error, Press **Continue Anyway** button.



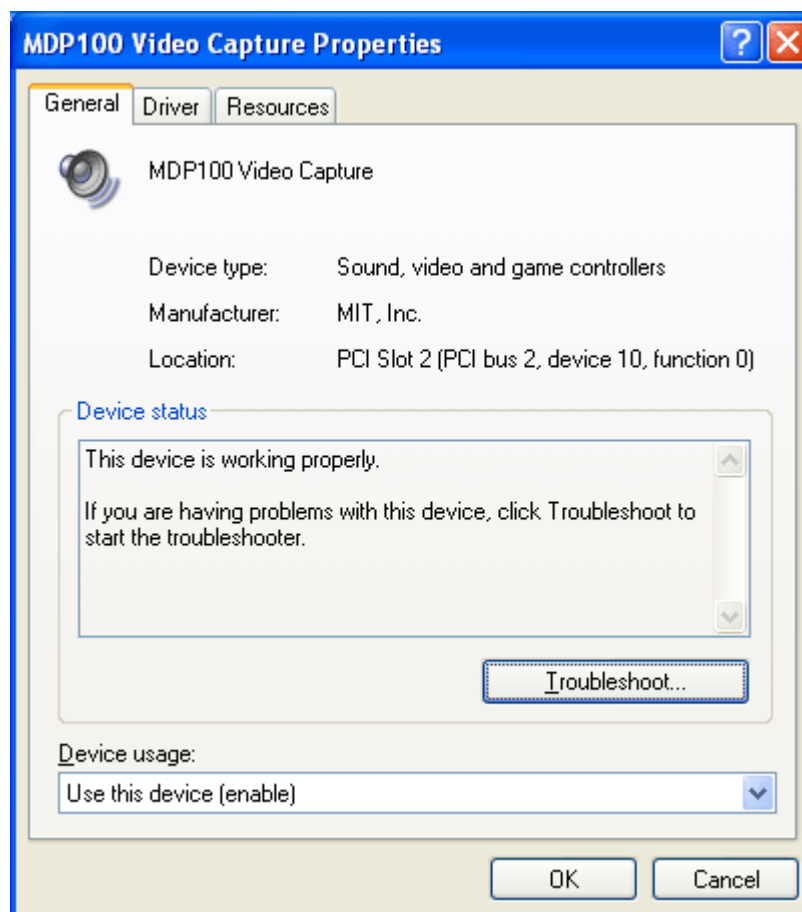
After the installation has completed, click on "Finish".

Confirming the Installing MyHD Device Driver

- ◆ To confirm the installing MyHD in device manager,



1. Choose "Control Panel"/"System"/"Device Manager".
2. Click "Sound, video and game controllers" then confirm the category of "MDP100 Video Capture".



◆Choose;

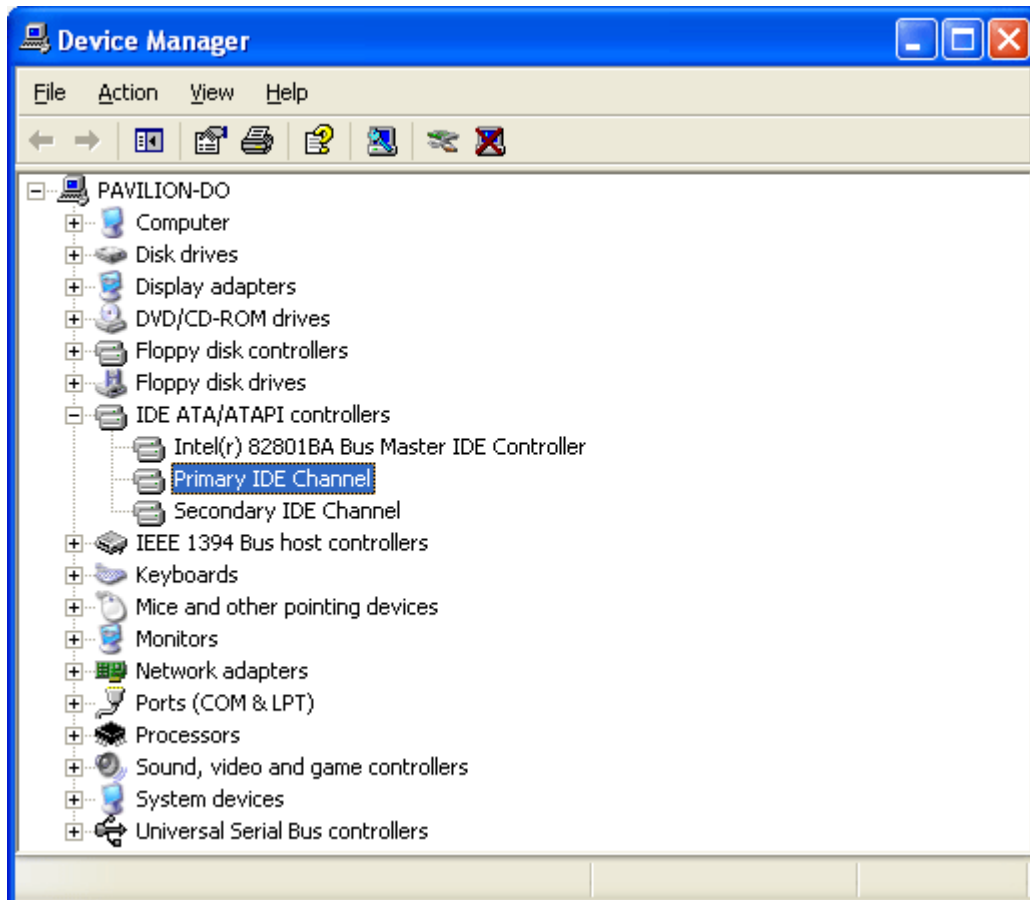
1. "MDP100 Video Capture Properties"
2. "General"

Confirm the phrase of "This device is working properly" in device status.

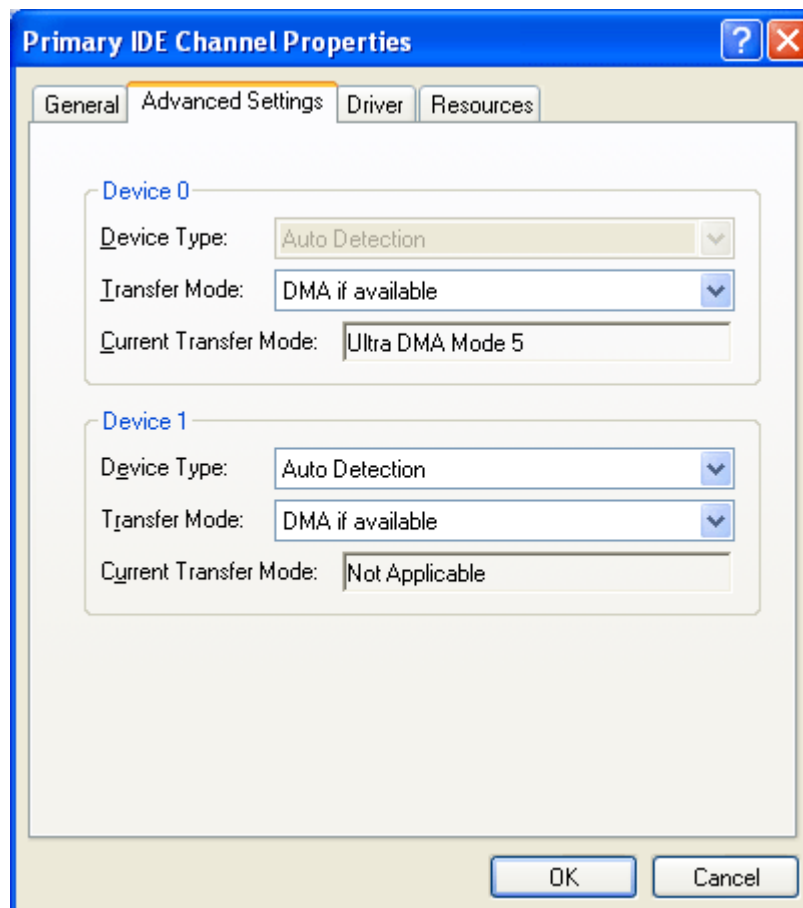
If the phrase is not shown, please install the MyHD device driver again.

Confirming DMA Settings

- To confirm the DMA settings. DMA is default "Transfer Mode" in Windows XP,



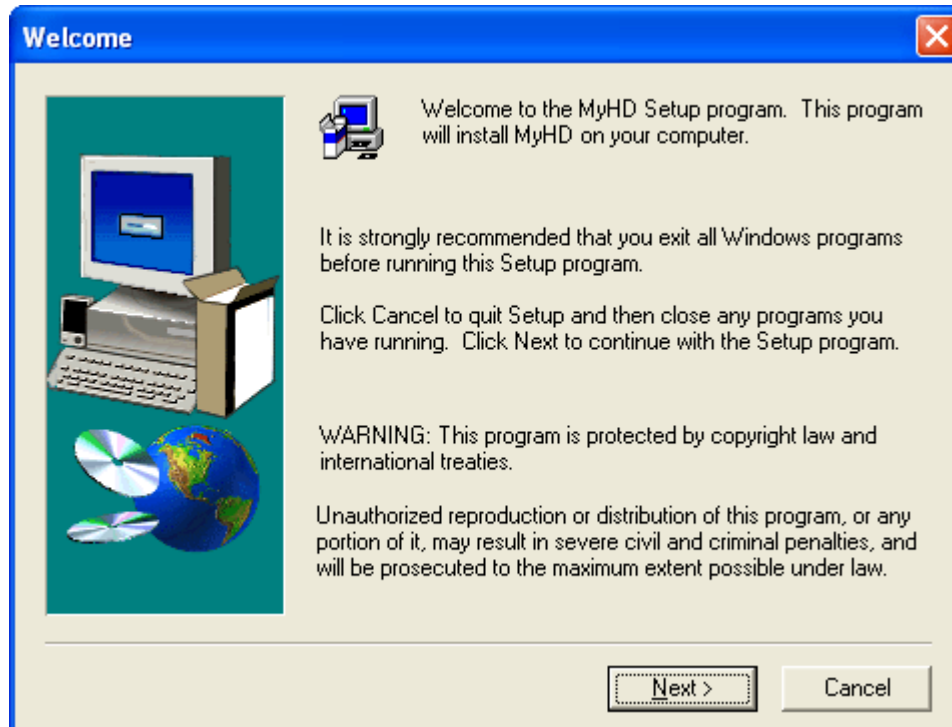
1. Choose "Control Panel"/"System" /"Device Manager".
2. Select "IDE ATA/ATAPI Controllers"/"Primary IDE Channel".



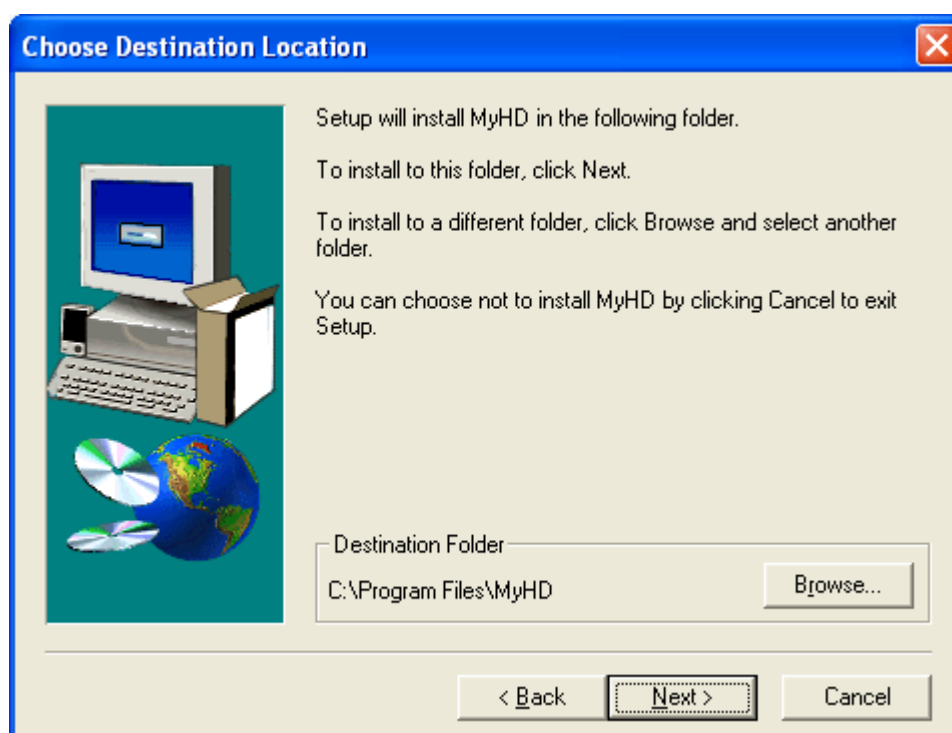
3. Click "Advanced Settings" then, confirm DMA is selected in "Transfer Mode".

Installing the MyHD Application Software

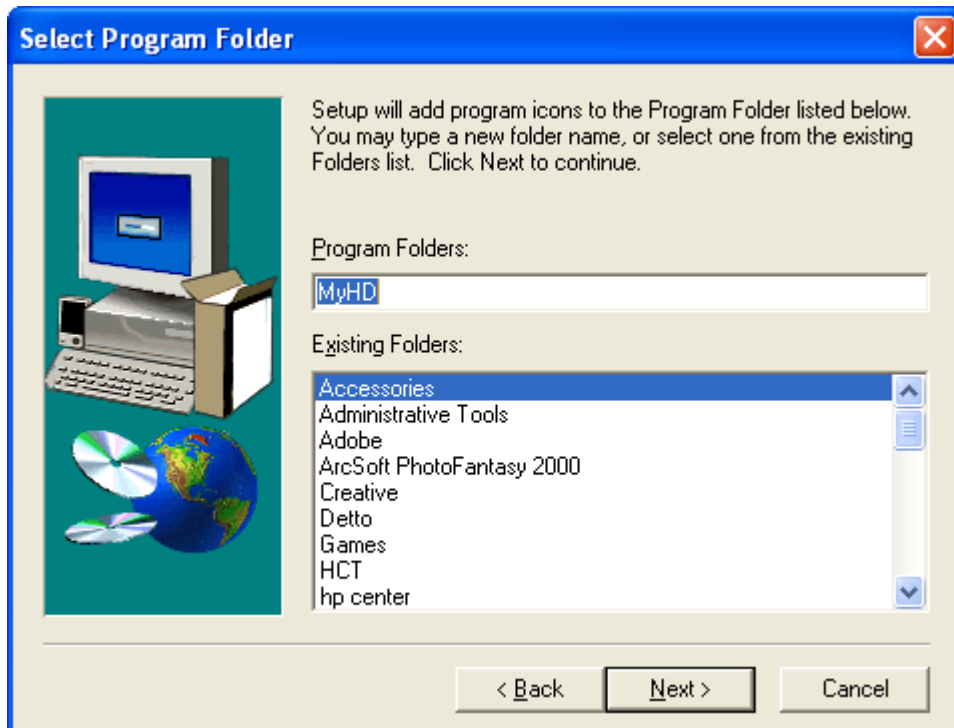
With the installation CD still loaded in your PC, open the Windows Explorer, navigate to the APP folder on the CD, and double-click on SETUP.EXE to launch the software installation, following the on-screen prompts until installation is completed.



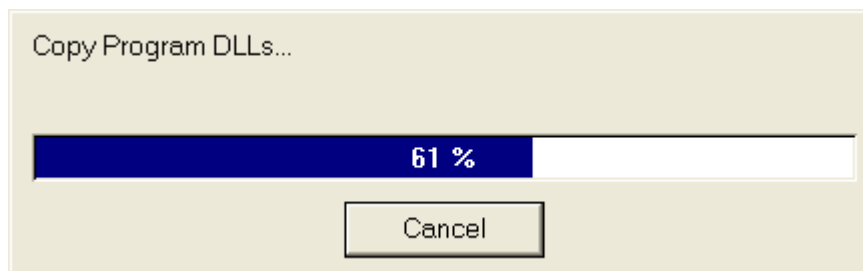
◆Click on "Next >".



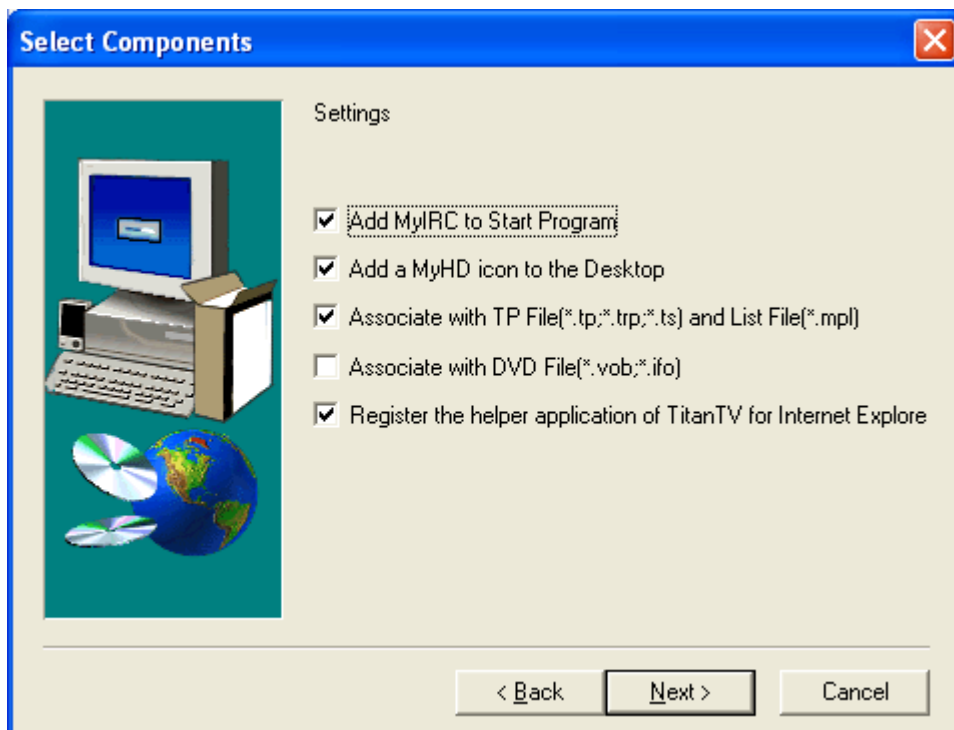
◆Choose Destination Folder, click on "Next >".



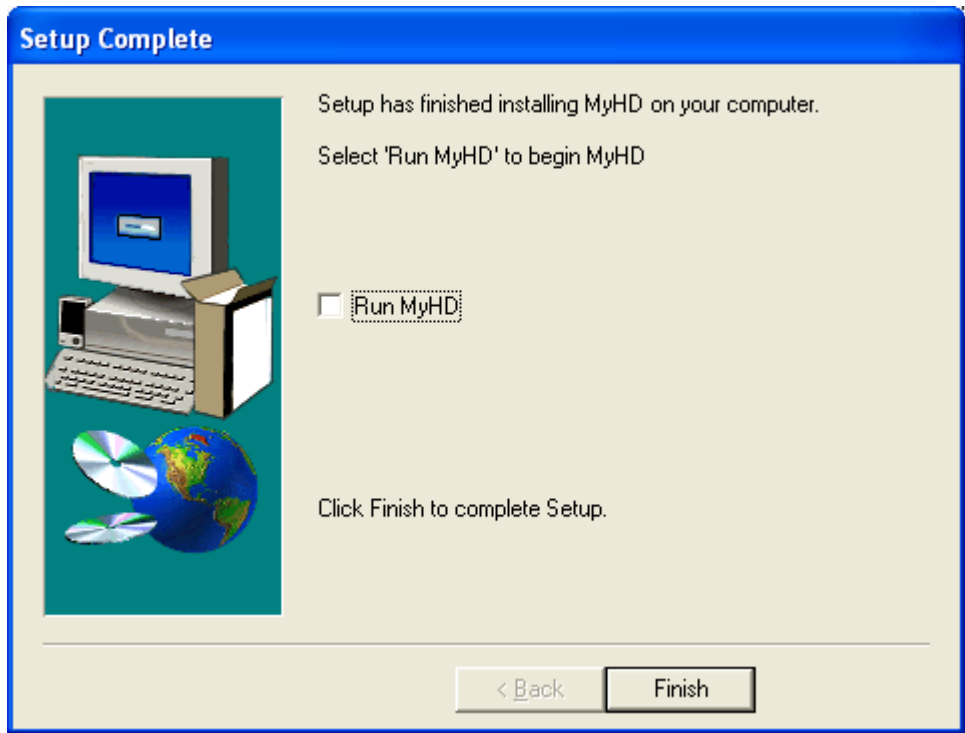
- ◆ Choose a program folder, click on "Next >".



- ◆ Installation process starts.



- ◆ Installation of the program is completed, then click on "Next >".



- ◆After the installation has completed, click on "Finish".
- To run the MyHD program immediately, check the check box and click on "Finish".



Program

-Operating-MyHD-

The below window will be appeared when you execute the MyHD program.



Overlay window for watching TV



• Main control panel for the MyHD



Expanded Main control panel for configuring MyHD



• Mini control panel for simple operation such as channel up/down and volume up/down.
Goes to main control panel

Current Display Status

Current Input

Display a current input antenna, either Ant1 or Ant2.

Receiving Sensitivity

Indicate the sensitivity of Antenna Receiving on a current digital broadcasting channel. Click on Receiving sensitivity to switch its format from signal bars to numeric signal, and vice versa.

Current Channel

Indicate a current channel. "D" represents digital broadcasting and "A" represents analog broadcasting. If there exist sub-channels, the following sub-channel number -1 or -2 will be displayed. In virtual channel mode, the sub-channel number is always displayed after virtual channel number in digital broadcasting.

Air/Cable

Display a current channel type, either terrestrial or cable.

AUDIO Status

Indicate the current audio configuration.
① On digital broadcasting : Dual Mono, Center, Stereo, LCR, LRS, LCRS, LRLsRs or LCRsLs (L:left, R:right, C:center, Ls:left surround, Rs:right surround) will be displayed.
② On analog broadcasting : Stereo, Mono, SAP will be display.

Current Volume

Display current volume.

Favorite Channel Mode

Display the favorite channel mode is on/off.

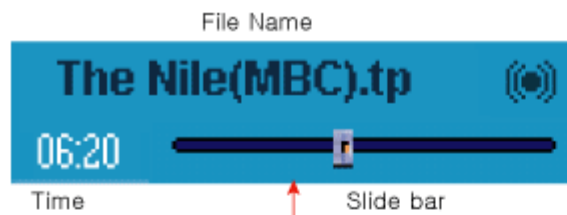


Channel Number Key Pad



- Select a channel number by a mouse. You can also select a channel by a keyboard.

File Control



File Open
You choose and play a file.

Capture
By a different capture mode, you can capture stream, moving pictures, or a currently displayed image.

Rewind
This button will rewind the current program.

Play/Pause

Next File
Play the next file in a file list.

Stop
Stop file-play.

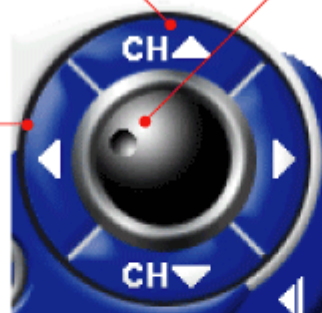
Previous File
Play the previous file in a file list.

Fast Forward
This button will fast forward the current program.

Channel and Volume Control

Channel Up/Down
Change next channel in a channel list.

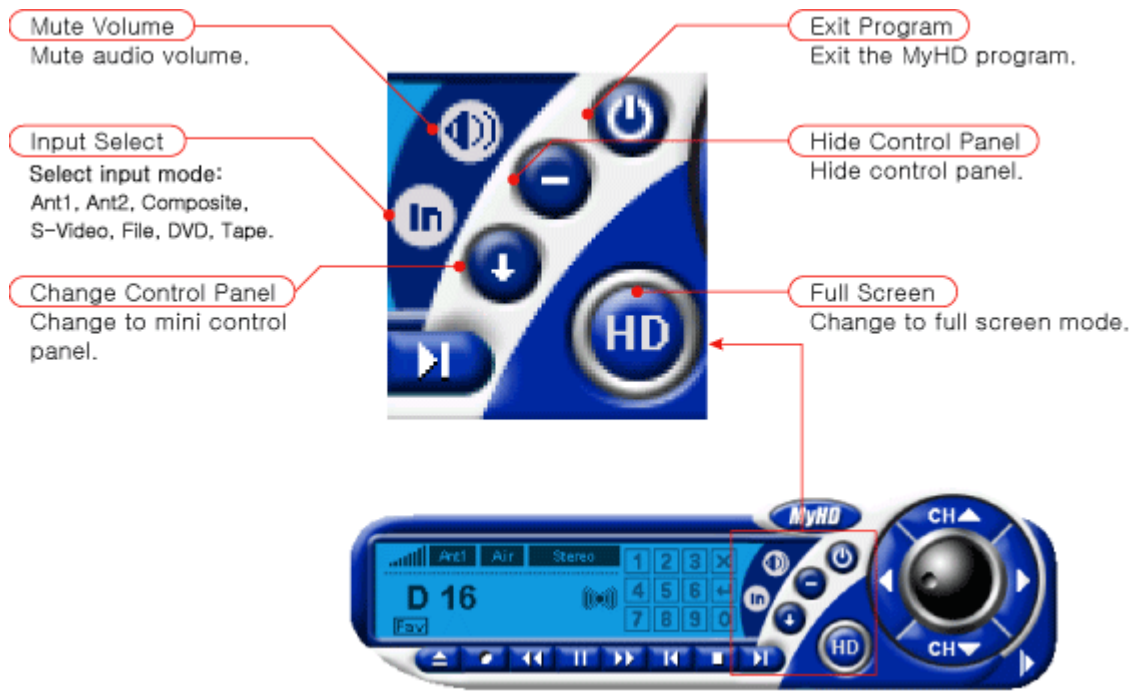
Sub-channel Up/Down
Change the sub-channel if a sub-channel exists.



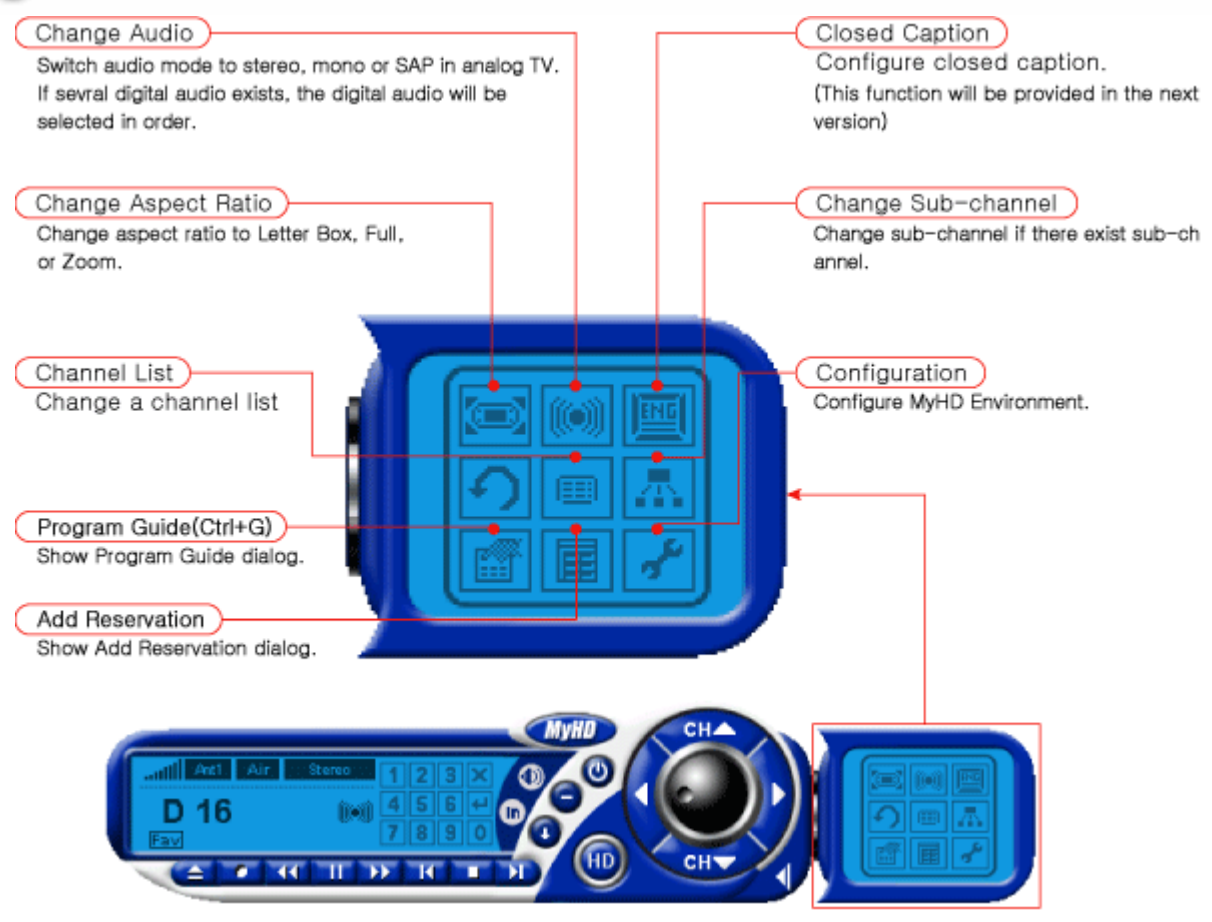
Volume
Control volume. Press mouse in knob and spin clockwise, volume will be risen.



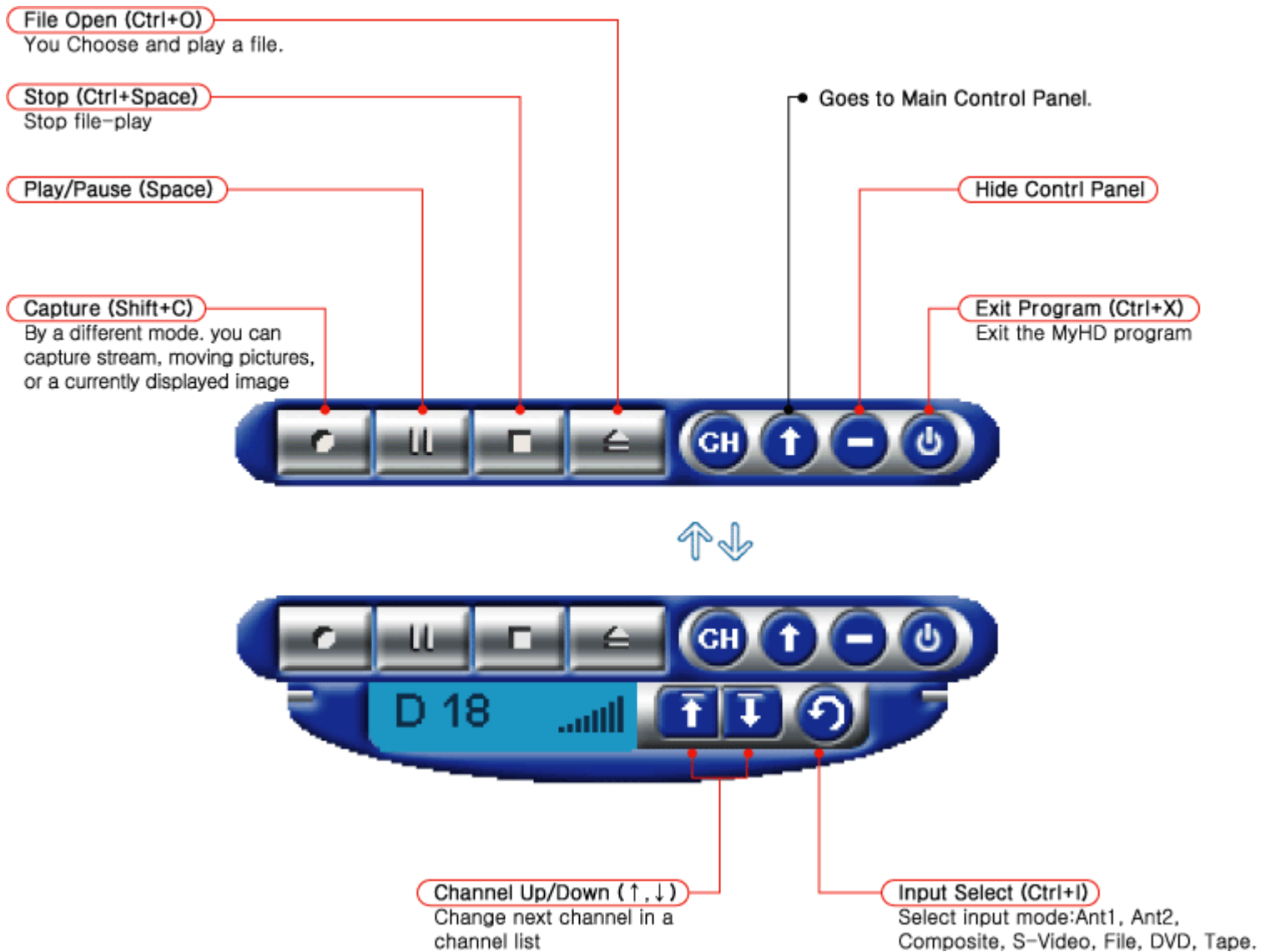
Mode Setting



Configuration



Configuration



Pop-up Menu

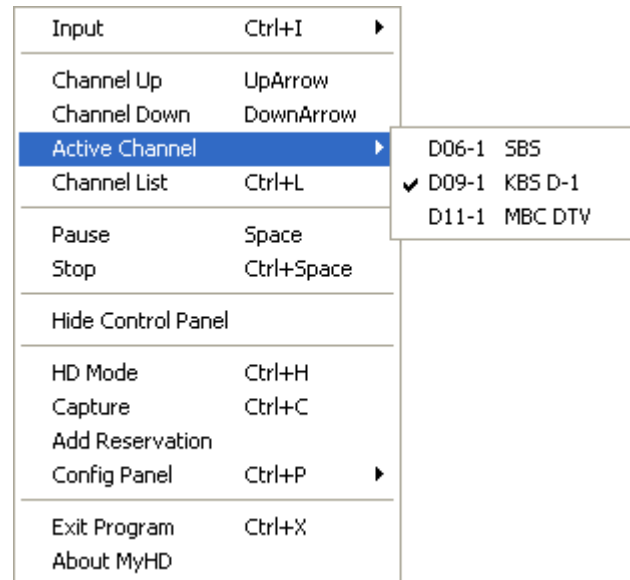
Press mouse right button on MyHD application program. Pop-up menu will appear like this.

- ♦ **antenna1 (Ctrl+1)** : Change input to antenna 1
- ♦ **antenna2 (Ctrl+2)** : Change input to antenna2
- ♦ **Favorite (Shift+M)** : Favorite channel mode on
- ♦ **Composite(Ctrl+V)** : Change input to Composite.
- ♦ **S-Video(Shift+V)** : Change input to S-Video.
- ♦ **File (Ctrl+F)** : File play mode on. When this menu is selected, **Active Channel** changes to **Active File** and **Channel List** changes to **File List** in the menu.
- ♦ **DVD (Shift+D)**: DVD input mode. Sub-menu(Move, Audio, and Ssubtitle) will be displayed on the "Pop-up menu" if DVD input is selected.
- ♦ **Tape (Ctrl+D)** : Record and playback with AV/C Tape Recorder through IEEE 1394 interface.

Input	Ctrl+I	▶	✓ Ant1	Ctrl+1
			Ant2	Ctrl+2
Channel Up	UpArrow		Favorite	Shift+M
Channel Down	DownArrow		Composite	Ctrl+V
Active Channel		▶	S-Video	Shift+V
Channel List	Ctrl+L		File	Ctrl+F
Pause	Space		DVD	Shift+D
Stop	Ctrl+Space		Tape	Ctrl+D
Hide Control Panel				
HD Mode	Ctrl+H			
Capture	Ctrl+C			
Add Reservation				
Config Panel	Ctrl+P	▶		
Exit Program	Ctrl+X			
About MyHD				

- ♦ **Active channel** : As shown on the right, current active channel is

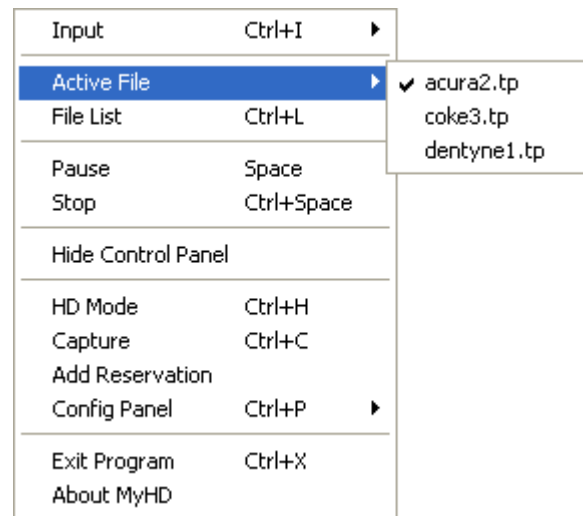
shown. Select one of them, then channel will change what you select.



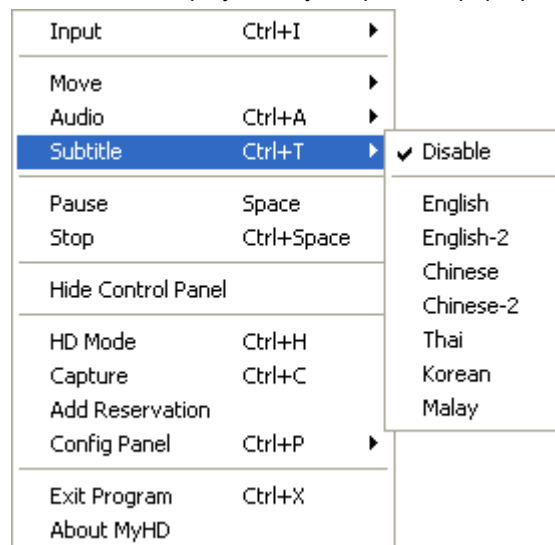
◆ **Channel list (Ctrl+L)** : Execute channel list configuration window.
(refer to channel settings)

◆ **Active File** : As shown on the right, file that is in the file list is shown.
Select one of them, you will play the file you selected.

◆ **File List (Ctrl+L)** : Execute File list dialog box. (refer to file play setup)



Move, Audio and Subtitle menu, as shown below, will be display when you open the "pop-up menu" if DVD input mode is selected.



- ◆ **Move** : Select and play new DVD title.
- ◆ **Audio(Ctrl + A)** :Select an Audio Type or a Language that you want to play.
- ◆ **Subtitle(Ctrl + T)** Select a Subtitle to play.
- ◆ **Pause/Play** :

Selecting **Pause** will pause current display. The letter on menu now switches to **Play**. Selecting **Play** will play the paused display.
then, the letter on menu switches back to **Pause**.

- ◆ **Stop** : Stop display
- ◆ **Channel_Up (UpArrow)** : Change channel up
- ◆ **Channel_Down (DownArrow)** : Change channel down
- ◆ Hide Control Panel:

Hide control panel. If control panel does not displayed on the screen by pressing Hide Control Panel, Hide Control Panel

changes to Show Control Panel. If you select Show Control Panel, then the control panel hidden by pressing Hide Control Panel will show up.

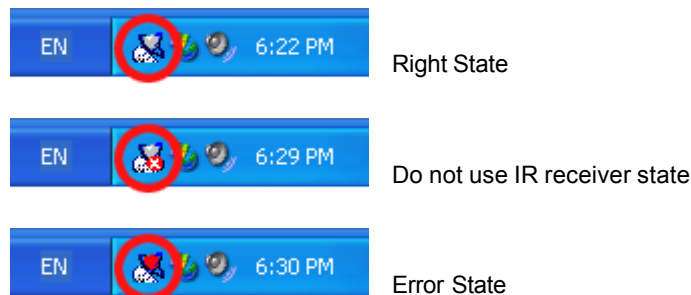
- ◆ **HD mode(Ctrl+H)** : Change to Full Screen Mode.
- ◆ **Capture (Ctrl+C)** : Start capturing stream, moving picture or image as referred to configure
- ◆ **Add Reservation** : Show **Add Reservation dialogue**. ([refer to Capture settings](#))
- ◆ **Config panel (Ctrl+P)** : Execute environment configure window. ([refer to AV settings](#))
- ◆ **Exit Program (Ctrl+X)** : Exit MyHD
- ◆ **About MyHD** : Shows program information .



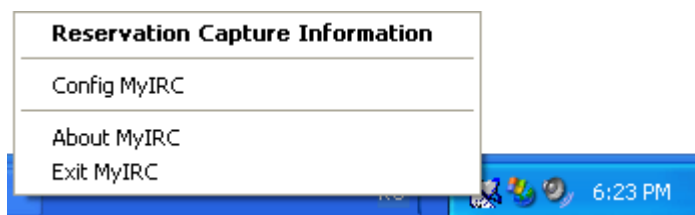
Remote Control Handset

Explanation of MyIRC Program

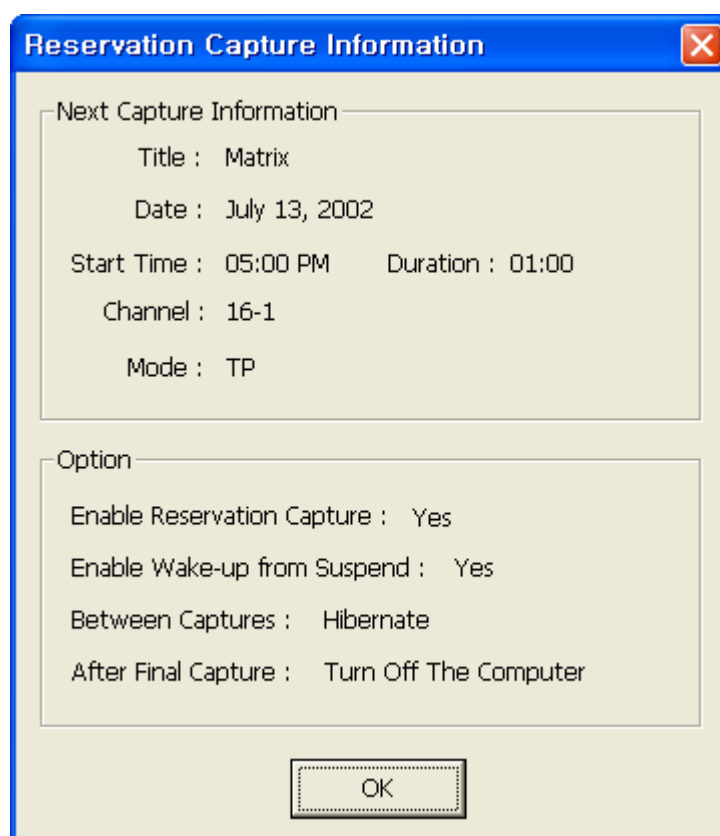
MyIRC is the control program of MyHD through inputs of Remote Control Signal.



MyIRC supports the functions of Remote Control and some functions of " **Reservation Capture**". MyIRC must be executed to run the automatic execution of MyHD and changeover to suspend mode automatically. The " **Reservation Capture**" can be executed even though the Remote Control Receiver is not connected. If error is occurred on the Remote Control Receiver, please exit the MyIRC program, then reconnect the receiver correctly and run **Config MyIRC** dialogue.



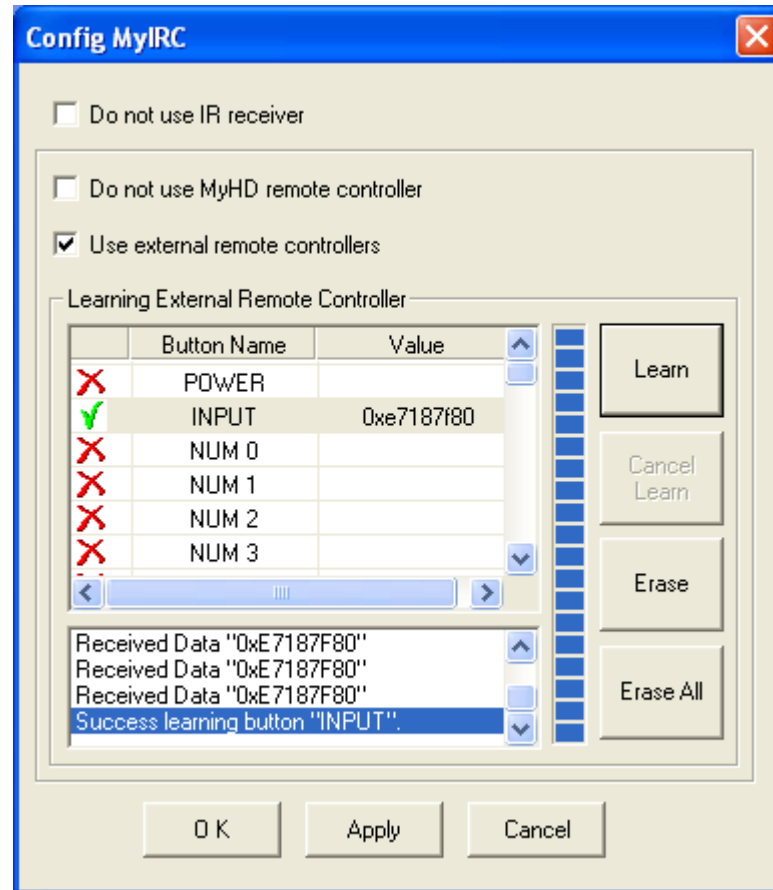
When you click right mouse button that is pointing MyIRC icon, the above pop-up menu will be displayed.



When you select **Reservation Capture Information** on the pop-up menu, **Reservation Capture Information** is shown. Please set up the reservation capture function in "Config Panel/Capture Settings/Reservation Capture Option." ([refer to Capture Settings](#))

Config MyIRC

MyIRC supports the learning function for an external remote controller. It means you can use your remote controller of TV or VTR to execute the MyHD program and add "hot keys" on unused buttons of the MyHD's Remote Control Handset.



? Do not use IR receiver : MyIRC program does not use IR function. It only support reservation capture function.

? Do not use MyHD remote controller : Decide whether to use the MyHD's remote control handset. When it is not selected, button operation of MyHD remote control are not related to **Learning External Remote controller**. When **Do not use MyHD remote controller** selected, MyHD remote controller won't work anymore. Button operation of external remote controller can now be learned.

? Use external remote controller ; Decide to use another remote controller

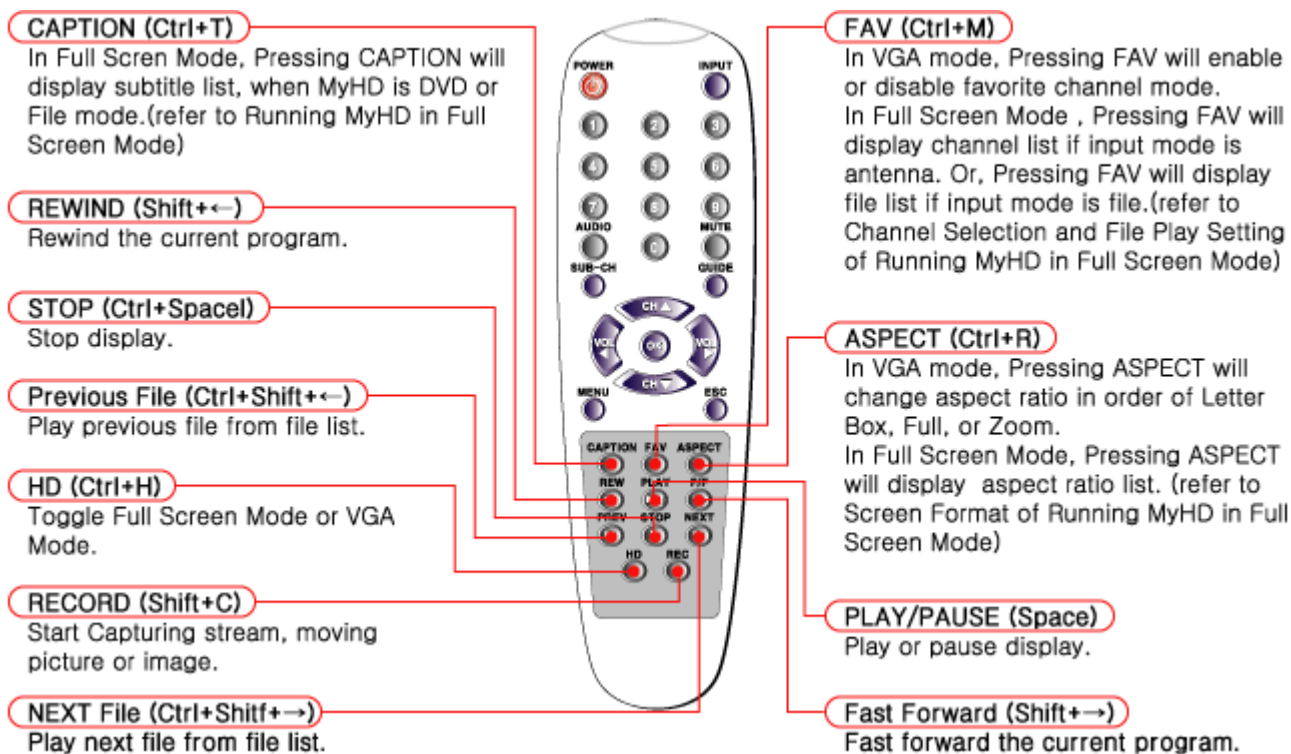
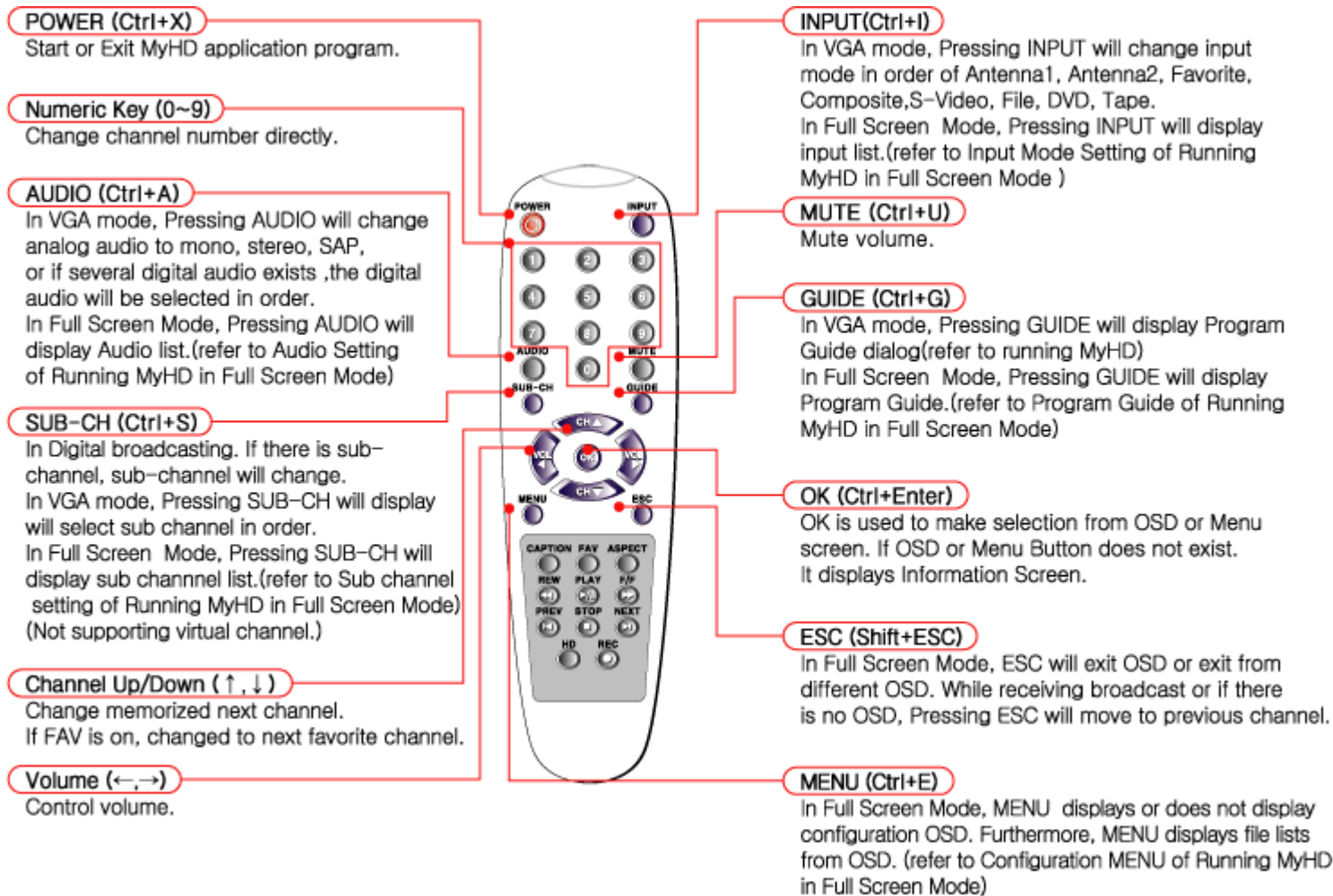
- Learning external remote controller

- (1) Click the right mouse button on the icon of MyIRC, then select "**Config MyIRC**".
- (2) Check the "**Use external remote controller**".
- (3) Select a button name that you want to use, then click "**Learn**".
- (4) Press the button five times (the code value of remote controller is inputted).
- (5) Click "**Apply**", then click "**OK**".

Even if you do Learning external remote controller, the buttons of MyHD Remote Controller work normally when you don't select **Do not use MyHD remote controller**.

*Note : Few remote controller can not be recognized the MyHD's remote control receiver.

Explanation of Remote Control Buttons

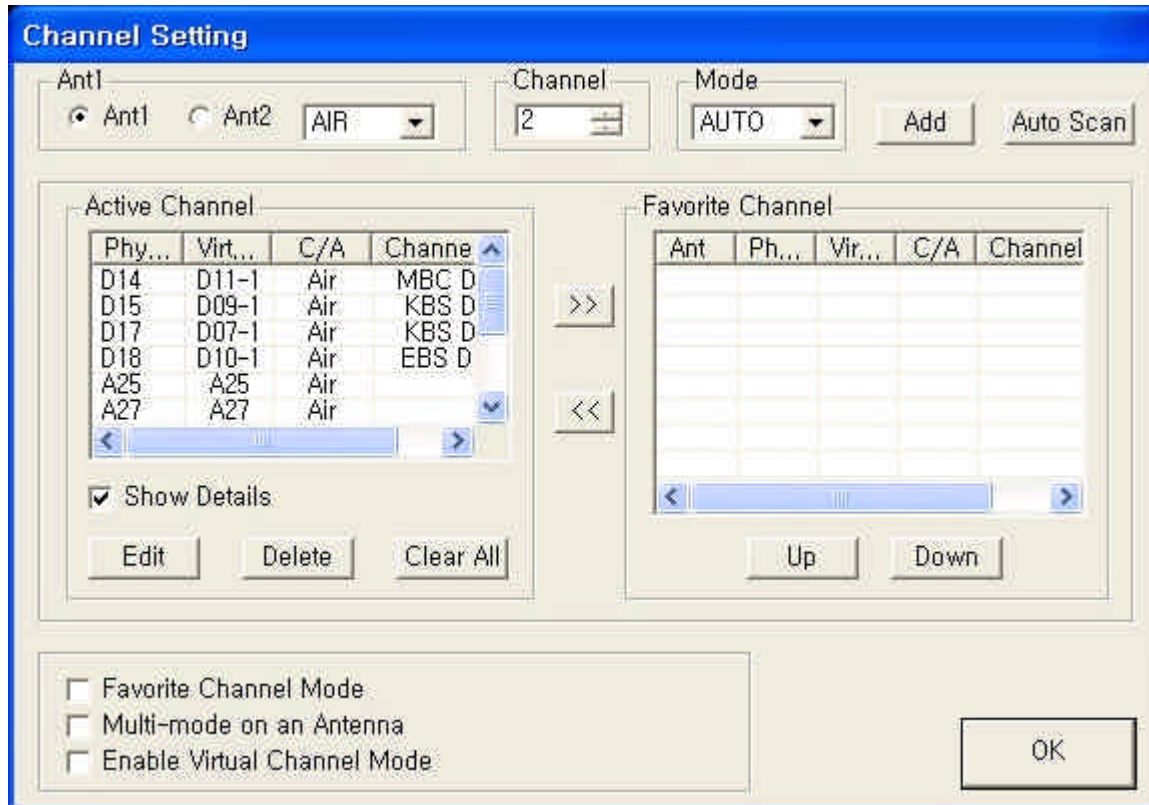


Channel Setting

To set up the TV channels and to display the window of "Channel Setting"

1. Select Expanded main control panel/Channel List .
2. Click right mouse button/pop up menu/channel list.

To Scan Auto-Channel



1. Select Ant1(Antenna 1) or Ant2(Antenna 2).
2. Choose Air(terrestrial broadcast) or Cable.

* **Select Auto if you are not sure of which one to choose. If Auto is selected, the program will automatically detect either Air or Cable.**

3. Click on **Auto Scan**.

Scanned channels will appear in the window after searching analog and digital broadcasting channels.

A channel is selected from the scanned channels when the channels are up and down.

Add/Delete Channel

To add channels by manual mode:

1. Input a channel number in the channel box.
2. Choose either analog or digital in the mode box. (If Auto is selected, the program will detect a channel either Air or Cable automatically.)
3. Click on **Add**, then the channel will be added in the "Scanned Channel" box.

To delete channels:

1. Choose a channel that you want to delete from the "Scanned Channel" box.
2. Click on **Delete**, then the channel is deleted from the "Scanned Channel" box.

Edit Channel Name

1. Check the **Show Details** to edit a memorized channel name.

2. Highlight a channel that you want to edit, then click **Edit** button.
3. The below window will be shown.



Type a name that you want to input, and click **OK**. If you want to display the channel name on the main control panel, go to "Config Panel/VGA Setup/Miscellaneous" to choose "Show Channel Name". ([refer to VGA Settings](#))

Selecting Favorite Channel

. **Favorite Channel Mode** : This switches to Favorite Channel Mode, Pressing Up/Down button will only change channels in the "favorite channel box".

To add/delete channels to favorite channel box:

1. Choose a channel number in the "Scanned Channel" box.
2. Click on >> button.

The channel is added in the favorite channel box.

To delete a channel from the favorite channels:

1. Choose a channel number in the "favorite channel box".
2. Click on << button.

The channel will be deleted from the "favorite channel" box.

To change the sequence of favorite channel list, click up/down in the "favorite channel" box.

To set the configure of MyHD program:

1. Click "Config" in the expanded main control or
2. Click right mouse button/pop-up menu/Config Panel then, Config Panel window will be displayed.

Multi-mode on an Antenna

Multi - mode on an Antenna :

One Antenna input may receive both cable channel and air channel. In this case, after option checking, press auto search to investigate all air and cable channel.

Virtual Channel Mode

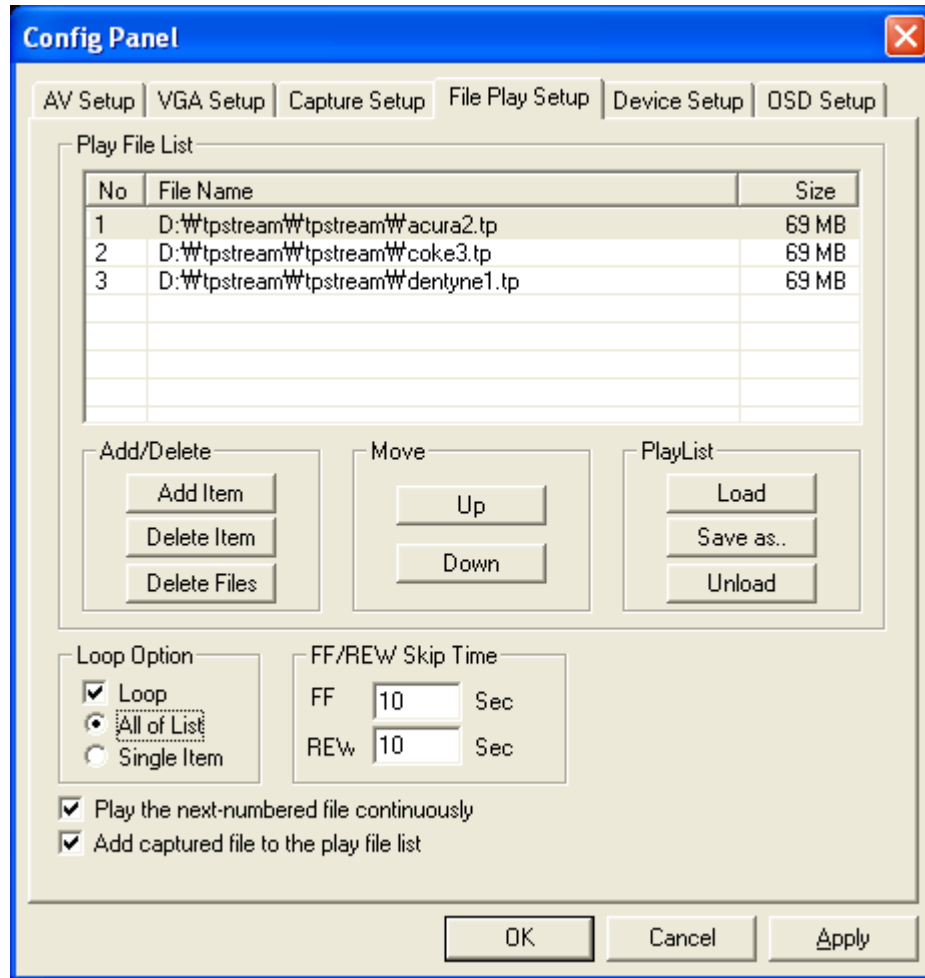
- Virtual Channel mode can be setup and canceled by "Virtual Channel Mode" button in the Channel Box
- When using virtual channel mode, virtual channel number is used rather than physical number in digital broadcasting. Furthermore, Select channel's name automatically by channel name in virtual channel information

- Channel number is classified in "virtual" and "physical" for both Memory Channel and Preferred channel in Channel List.
- In case of analog channel, physical channel number become virtual channel number
- Both kinds of channel can be set only for digital channels.
- Virtual channel number and name can be correctly selected only when PSIP information is received. Otherwise, virtual channel number is set as physical channel and channel name is not settled.
- In virtual channel mode, if each digital broadcast channel has multiple sub-channels, each sub-channels will be set as independent channel. When virtual channel information is not being transmitted properly, channel number will be set by adding extra number such as -1, -2, etc.
- After scanning every channel by virtual channel mode, if virtual channel mode is aborted, a channel with multiple sub-channels will eliminate all the sub-channels except for one sub-channel left. When the user selects virtual channel mode again, Auto-scan has to be redone.



File Play Setup

Making selection relate to File Play.



Play File List

Play File List shows the list of files to be played.

Add/Delete

Clicking on "Add Item" button or "Delete Item" button allows you to add or delete files in the Play File List. Click on "Delete Files" button If you want to delete files from your hard disk as well as the Play File List.

Move Selected Item

You can change the order of the Play File List by clicking on "Up" and "Down" button.

Play List

? Play list is to manage Play File List (*.mpl). This allows to change and to make new files according to the file format.

Example for the "Play List".

Messages	Explain
MYHDPLIST1	MyHD's Play List #1- Indicates a listed file to replay. (Header)
<# Generated by MyHD, Date: 2002/11/05	Replay date.
<#Sample File.	'<#' option means comment.

D:\TpStream\1102\documentary.tp	files in the list
D:\TpStream\1102\HDdrama.tp	File not in the list, if file doesn't exist.
<i D:\TpStream\list2.mpl	Use '<l' option to add other listed files.
<c D:\TpStream\	Use '<c' option to set a default directory, and just type file names to add files.
butterfly.tp	Add D:\TpStream\butterfly.tp in the list.
drama.tp	Add D:\TpStream\drama.tp in the list.
	Load files using by C programming. (printf format in C Language)
	music%03d.tp – Indicating format
<p music%03d.tp 2 4	2 – Starting number
	4-Ending number
	In the example, the files will be played music002.tp, music003.tp and music004.tp.

- ? **Load** : Load a list file (*.mpl)
- ? **Save as** : Store as a file of play file lists.
- ? **Unload** : Delete all of lists in the file.

Loop Option

- ? **Loop** : Select play file repeatedly.
- ? **All of list** : Play entire file from the list. When Loop is selected, entire file from list will be played repeatedly.
- ? **Single Item** : Play a file. When loop is selected, the file will be played repeatedly.

Play the Next-numbered File

Select this option to play automatically the divided files in the sequence according to the number of their file names. If a current file have a properly numbered file name, the next-numbered file in the same directory will be played automatically and sequentially. If a current file have no properly numbered file name, a file with a properly numbered name like "filename_01.tp" will be searched in the same directory. if such a file does exist the file will be played automatically and sequentially. Otherwise the next item in the Play File List will be played. this rule is identically applied to VOB Files.

Add Captured File to the Play File

You can select it to add the captured file to the Play File List.

The files are played in order of the Play File List. To play a specific file, Select and Double Click the file. If a file is divided and captured (example : a.tp, a_01.tp, ...), it is only necessary to add the first divided and captured file to the Play File List.

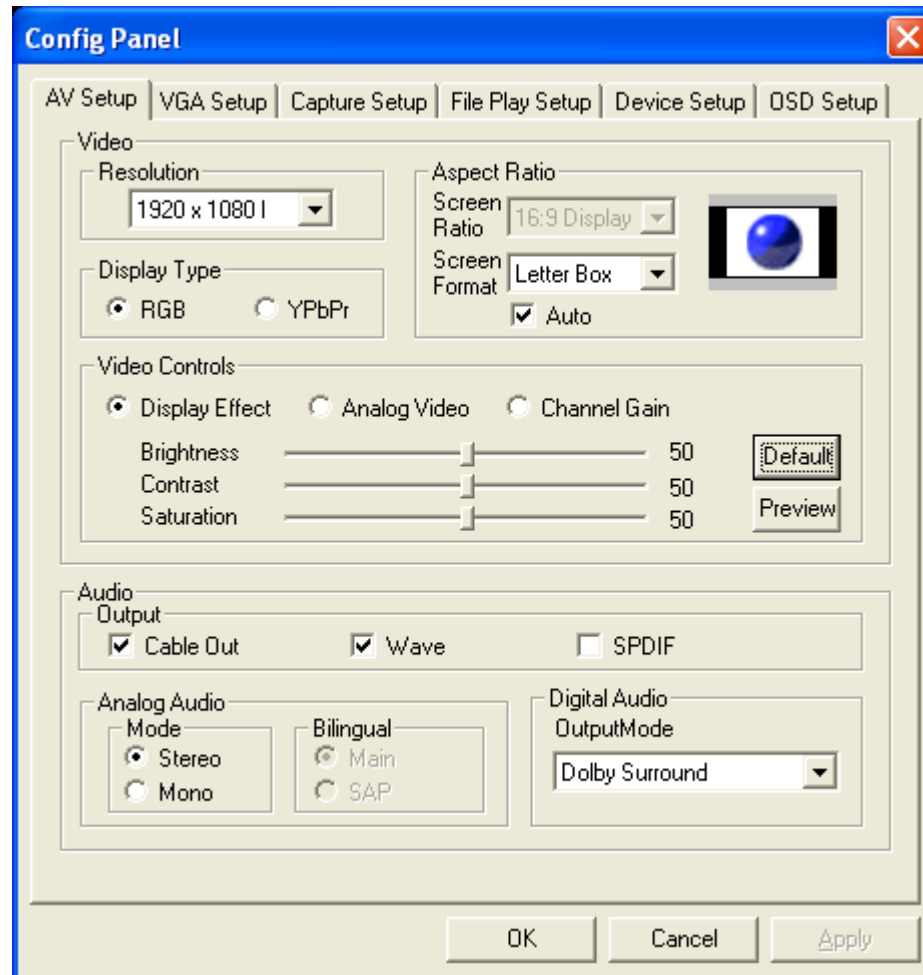
If you push the **FAV** button of the remote control in the Full Screen Mode, the Play File List is displayed on the screen. And you can select file using **Channel** button and you can make selection by pressing OK button in the Play File List .

You can watch the DVD files(*.vob) in the HD Resolution Mode of the MyHD Card. To play sequentially several VOB files in the DVD, select the "Play the next-numbered files" option, add VTS_01_1.VOD file to Play File List and play it. Then, the next-numbered files will be played automatically and sequentially.(At present, the limited function is provided only to play the VOD files not copy protected because of the license of DVD with copy protection.)



A/V Settings

-Setting-Video-Configuration-



◆ Resolution

Select full screen(HDTV) mode of MyHD video output.

* 1920 x 1080i is recommended if you are using a HDTV or a PC monitor because most of digital broadcast programs are sent on the air by 1920 x 1080i format.

If you are watching an analog TV, please choose 720 x 480i format which is the current format of analog broadcasting programs.

◆ Aspect Ratio

If you choose Auto, screen ratio will be selected automatically. When Auto is selected, you can choose screen format ,zoom or letter box.

If screen ratio is different between monitor and stream, Screen ratio is changed as screen format selected.

◆ Screen ratio

If Auto is not selected, you can select screen ratio manually. If video resolution and screen ratio is different, you can change screen ratio fit for monitor.

◆ Screen format

To select a screen format of HDTV(full screen) mode, select one of following format:

1. Letter Box:

- if aspect ratio is 4:3, Black strips are shown on top and bottom of the screen.
- if aspect ratio is 16:9, Black strips are shown on left and right of the screen.

2. Zoom :

- if aspect ratio is 4:3, Expand to right and left to change aspect ratio.
- if aspect ratio is 16:9, Expand to top and bottom to change aspect ratio.

3. Full:

- A screen is filled by a HDTV mode which does regard the vertical and horizontal ratio of a monitor.

* If Auto is selected, only Letter Box and Zoom can be chosen.

4. LetterBox 4:3 : Black strips are shown on top and bottom of the screen.

5. **LetterBox 16:9**: Black strips are shown on left and right of the screen.

6. **Zoom 4:3** : Expand to right and left to change aspect ratio.

7. **Zoom 16:9** : Expand to top and bottom to change aspect ratio.

◆ **Display Type**

Choose a video output signal of MyHD form either RGB or YPbPr;

RGB for a PC monitor and YPbPr for component output to an HDTV(need a cable for connecting DSUB -15 to RCA).

◆ Video Controls :

- **Display Effect**: Setting Brightness, Contrast and Saturation of MyHD video output.

To display HD mode, click on **Preview** button and to exit from the HD mode, click the **Esc** on the keyboard

- **Analog Video**: Setting Brightness, Contrast and Saturation of Analog broacasting and external input(composite, S-Video). This setting applys to overlay screen and Fulll Screen.

- **Channel Gain** : Controls channel gain. When Display type is RGB, channel gain controls G, B, R output signal gain. And, when display type is YPbPr, channel gain controls Y, Pb, Pr output signal.

Each display type, RGB and YPbPR, has seperate control over Video Control. Press **Default** button to return to original default value.

To display Full Screen mode, click on "**Preview** button and to exit from the HD mode, click the **Esc** on the keyboard.

Setting Audio Configuration

◆ **Audio Output**

1. **Cable Out**(only for analog broacasting) :

To use the cable output, audio output of MyHD and a sound card must be connected([refer to Hardware installation](#)). If Cable Out is selected, audio output of analog broacasting is worked by a cable even though Wave is checked.

2. **Wave** : Audio output of digital broacasting through a sound card without a cable.

Wave must be selected for Audio output of digital broacasting.

3. **SPDIF**: SPDIF is used for an Audio Amp([refer to Hardware Settings](#)).

Wave and SPDIF can not be selected at the same time.

◆ **Analog Audio**

Choose either Stereo or Mono mode.

◆ **Bilingual**

You can choose Main or SAP only if Mono mode is selected.

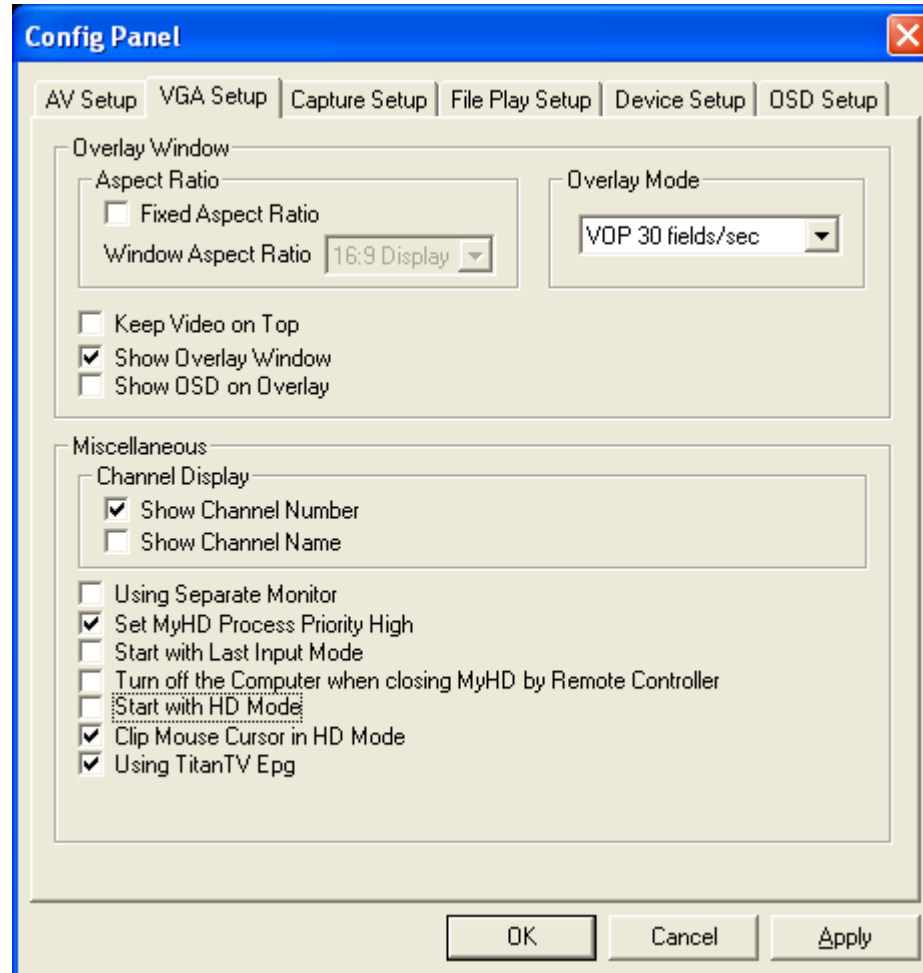


VGA Setup

Setting the display options of an overlay window in VGA setup.

Overlay Mode

Setting overlay window mode



◆ Fixed Aspect Ratio

Enlargement and reduction of the overlay window screen works maintaining certain ratio which is selected in Window aspect ratio

◆ VOP 30 fields/sec

30 fields of images in a second.

Basic mode of an overlay window

◆ VOP 60 fields/sec

60 fields of images in a second.

This mode will display more smooth motions than 30 fields/sec and it requires higher specification of PC.

(It might not be supported by performances and specifications of graphic card.)

◆ VOP 30 frames/sec

30 frames of images in a second.

Vertical resolution is twice higher than 30 fields/sec.

It requires higher specification of PC.

(It might not be supported by performances and specifications of graphic card.)

♦ VOP 60 frames/sec

60 frames of images in a second.

The best quality of video will be displayed by this mode and higher specification of PC is required.

(It might not be supported by performances and specifications of graphic card.)

♦ Keep Video On Top

The overlay window is always displayed over other windows.

♦ Show Overlay Window

To Show video on the overlay window. Canceling overlay window will make overlay window disappear. However, tray icon will appear. Click right button of a mouse on tray icon to display pop up menu or use (Ctrl+Shift+O) as a short way.



♦ Show OSD on Overlay

To show “On Screen Display” on the overlay window.

Miscellaneous

♦ Channel Display

A channel display mode in main control panel or OSD can be selected among three modes, channel number only, channel description only, or both.

♦ Using Separate Monitor

To display HD mode in a HDTV and an overlay window of a PC Monitor at the same time.

♦ Set MyHD Process Priority

To optimize the performance of MyHD with running internet or other programs.

♦ Start with Last Input Mode

To memorize input mode when you exit from the MyHD program. when it is not checked, default input is Anetenna1.

♦ Turn off the Computer when MyHD is closed by Remote Controller.

To turn off your computer in 10 seconds after exiting from MyHD. Press **ESC** button on the remote controller to cancel the function.

♦ Start with HD Mode

To start MyHD with HD (Full Screen) mode.

♦ Clip Mouse in HD mode

Settle the mouse cursor to overlay window if overlay window is now shown on the screen, settle the mouse cursor to control

panel of HyHD. If none of this exist, it won't work (Appllicable to one monitor usage only)

◆ Using TitanTV Epg

Set TitanTV Epg as basic setting, If not selected, it shows program guide of MyHD.([refer to Recording using TitanTV Epg](#)).



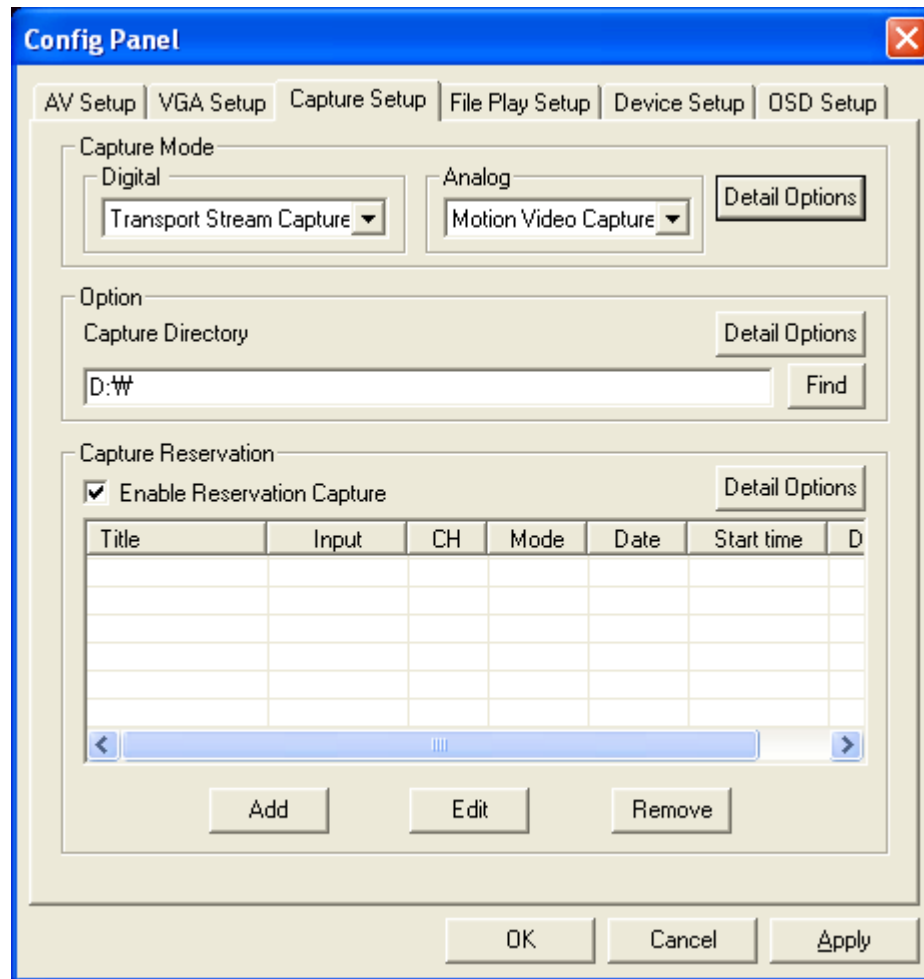
Caution - VGA screen is not displayed when "Using Separate Monitor" is selected with connecting the MyHD's A/V cable. In this case, a monitor cable should be directly connected to VGA Card. Then VGA screen is displayed.



Capture Settings

-Setting a Capture Mode-

Select how to capture the currently viewing image. Each Digital Broadcasting and Analog Broadcasting can select Capture Mode separately.



◆ Transport Stream Capture

Capturing a real time digital broadcasting program into HDD as Transport Stream.
In detail options, a capturing file size can be selected 650MB, 2 GB or Custom.

◆ Still Image Capture

Capturing a still frame image as format of bitmap(.bmp).
Resolution depends on video resolution in AV settings.

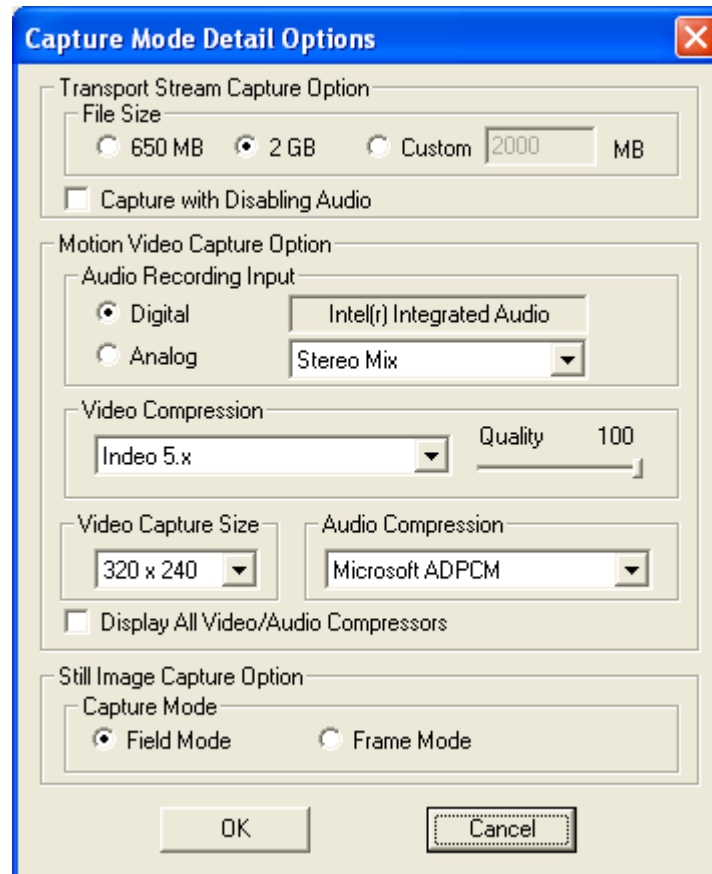
◆ Motion Video Capture

Capturing a real time digital broadcasting program as AVI format.

◆ Tape

Capturing a real time digital broadcasting program into D-VHS like taping device.

Capture Mode Detail Options



◆ Transport Stream Capture Option

- **File Size** : Select maximum size of capturing file. If file system is FAT32, the maximum selectable size of the file is 4000MB, but for NTFS, there is no limitation. If the file size exceeds the selected file size while capturing the file, a new file, "_number", will appear in addition to the original file name. (ex, Capture.tp, Capture_01.tp, Capture_02.tp ...)
- **Capture with Disabling Audio**: If Transport Stream cuts off inbetween captured stream due to low efficiency of a computer, try again by selecting 'Capture with Disabling Audio'.

◆ Motion Video Capture Option

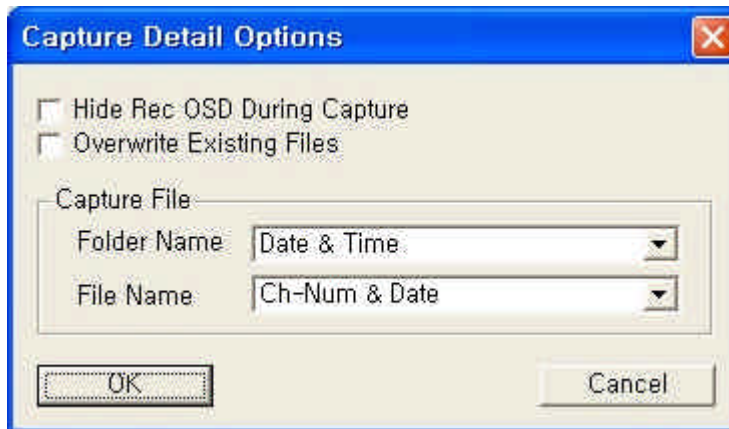
- **Audio Recording Input**: Select Audio Recording Input while capturing motion video. Selectable for both Digital and Analog mode. If cable output is selected, choose cable connected input port from sound card.
- **Video Compression** : Select Video's compressor. Quality of picture can be selected as compressed picture. **Indeo 5.x** is offered as a basic compressor. The basic compressor is uncompressed mode, so it support **RGB24bpp** and **RGB16bpp**.
- **Video Capture Size**: Select size of capturing image.
- **Audio Compression**: Select audio compression. Supported compressor is ADPCM and supported uncompressed mode is PCM.
- **Display All Video/Audio Compressors**: Show all Video/Audio compressor that are connected to system..

◆ Still Image Capture Option

When using original screen in Interlace method such as 1920 X 1080 I, because odd number line and even number line come up by turns, diagonal pattern may appear due to time lag when a screen is captured. When the pattern does not appear, total resolution may be saved by frame mode; when it does, field mode is recommended disregarding 50% decrease of vertical resolution. When using Progressive method for screen, the cases mentioned above will not appear; therefore frame mode set up is recommended.

- ◆ Directory Setting : Setting a directory for capturing transport stream and AVI file.

Capture Detail Options



- ◆ Hiding Rec OSD

Hiding Rec OSD from the screen while capturing.

- ◆ **Overwrite Existing Files**

In case same name exist while capturing, it will overwrite existing file

If you do not select this option and if same file name exist in the existing file list, prevent overwriting by adding '01' like number to end of the file name. (ex : filename.tp, filename01.tp,...)

- ◆ **Capture File**

Set file location and its name when capturing file by **REC** button. Folder name and File Name can be selected by combining **Date, Time,** and **Ch-Num** (In case of reservation capture mode, name of file and location can be set in add reservation)

- ◆ **Folder Name**

Select folder to capture a file. Folder is created under directory of preset directory in capture option. Selection "**None**" won't create folder, but it creates file in same directory.

- ◆ **File Name:**

Select name for capturing file.

Make an association of **Date, Time, Channel name channel number.** Name of the file is selected automatically by the association.

Reservation Capture Setting

Allow memorized channel or external channel to be saved and viewed on any certain time.

- ◆ Reservation Capture option: Select whether to enable reservation capture

- Reservation Capture List: Make change, add, or delete. Maximum 50 can be reserved.

Reservation Capture Options

- Wake up from Suspend

Decide whether to operate capture from suspend mode. If selected, it maintains suspend mode, and reservation capture mode won't operate.

- Transport Stream Capture in Background

When capturing transport stream, MyHD activate as background mode. In this case, MyHD won't show up on overlay window, but it exists as tray icon and sound does not work. Click on right button to popup the menu to pause or to stop capturing.

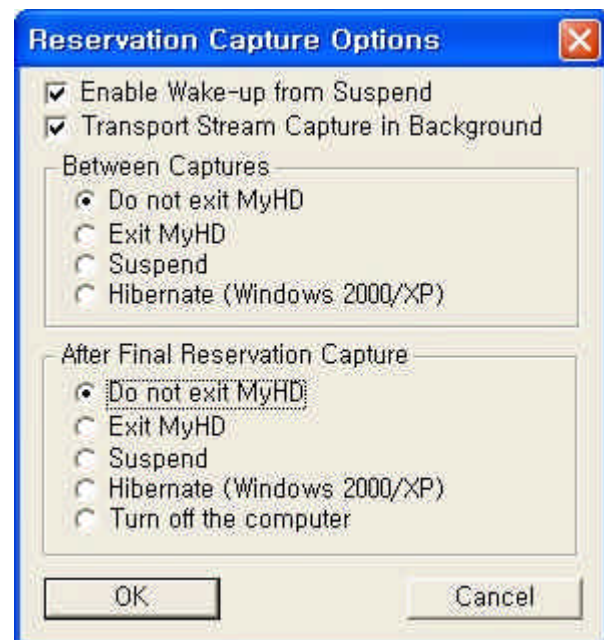


- Between Capture : This selects MyHD's motion status, When reservation capture exist after another reservation capture.

- **Do Not Exit** : Keep MyHD turned on.
- **Exit MyHD** : Exit MyHD only.
- **Suspend**: MyHD program will be turned off after recording, and then your PC will be in suspend mode.
- **Hibernate**: MyHD program will be turned off, and then your PC will be in hibernate mode. Maximum hibernate mode works only in Windows 2000/XP.

- After Final Reservation Capture: Select MyHD activities after final reservation capture.

- **Do Not Exit** : same as above.
- **Exit MyHD** : same as above.
- **Suspend**: same as above.
- **Hibernate**: same as above.
- **Turn off The Computer**: MyHD program will be turned off after recording and then your PC will be turned off.



Add Reservation

- ◆ **Title** : Select program title
- ◆ Active Channel

By selecting channel, memorized channel appears. Select channel that you wish to capture. If a wanted channel is not shown on the channel list, add the wanted channel to the memorized channel. If you wish to capture external input, choose external input from Major channel list. (Refer to Channel Selection)

- ◆ Minor Channel

For digital broadcasting, if there is many major and Minor Channels, select the wanted minor channel to appear on the screen. However, save all the minor channels in the file.

- ◆ Capture Mode

In case of digital channel, select among **Transport Stream capture**, **Motion Video Capture**, **Tape**, or **Watch**. In case of analog channel or external input, select between **Motion Video Capture** or **Watch**. If Watch is selected, capturing won't work. It will only display reserved channel.

- ◆ Date

Select the date you want to capture. If you would like to capture only once on certain date, select once and then select wanted date. Select daily for daily capture. Select weekly for weekly capture but be sure to designate the day.

- ◆ Time

Select the time you wish to capture. select duration to select a term.

- ◆ Folder Name:

Select a folder that will include file captured. A folder will be created under the selected directory in Directory Setting of Capture Option. When **None** is selected, a file will be created under the identical directory without creation of a folder.

- ◆ File Name

Select file name to capture.

◆ Default

When 'Default' is selected, depends on the selection, title, date, time, channel name, and channel number can be combined.

Changing file name depends on its combination. If default is not selected, file name can be decided by user's input.

◆ File

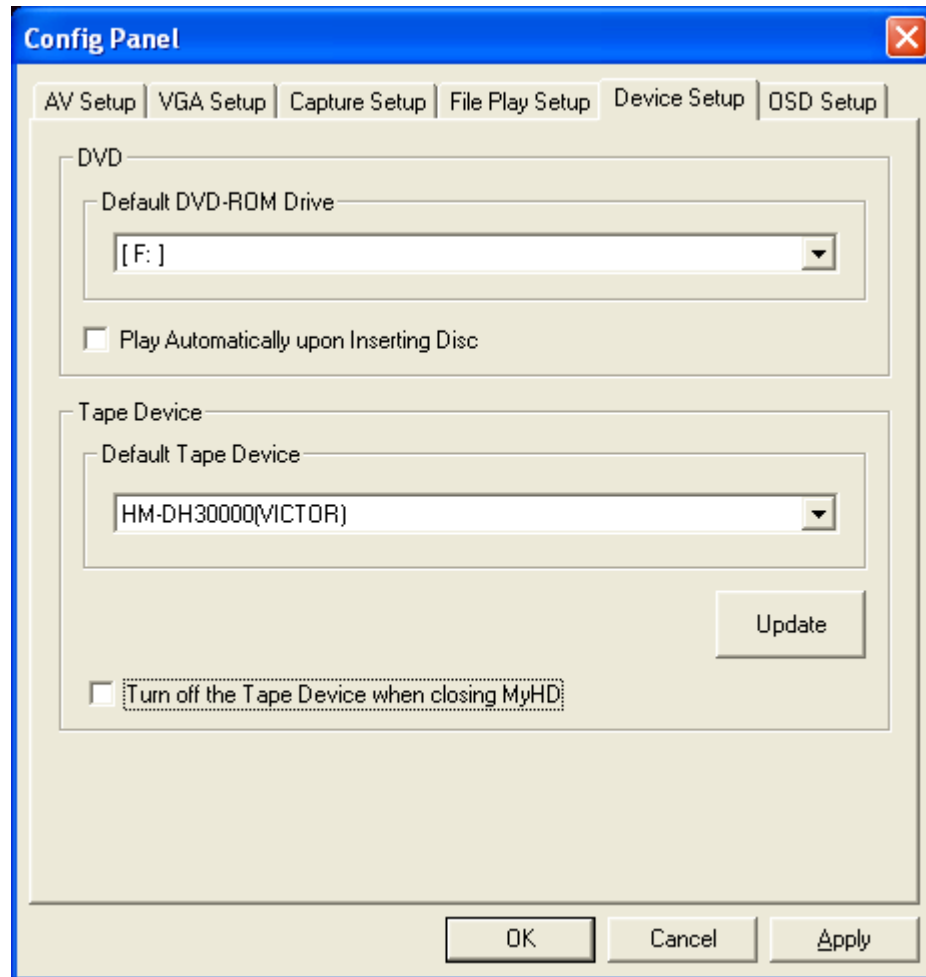
Select file to capture. When **Default** setting is selected, file will be chosen by the combination of names of a folder and a file.

When default setting is aborted, folder and file may be selected by a user. The location and name of file can be set by pressing "**Find**" button. In this case, Default setting will be automatically aborted.

If files have same name but different date, this can be prevented by adding '01' like numbers after the file name.(ex: drama.tp, drama01.tp, drama02.tp ...)



Device Settings



Default DVD-ROM Drive

? GTo select a default DVD-ROM drive.

Play Automatically upon inserting Disc.

? GTo play a DVD title automatically when MyHD is executed.

Dault Tape Device

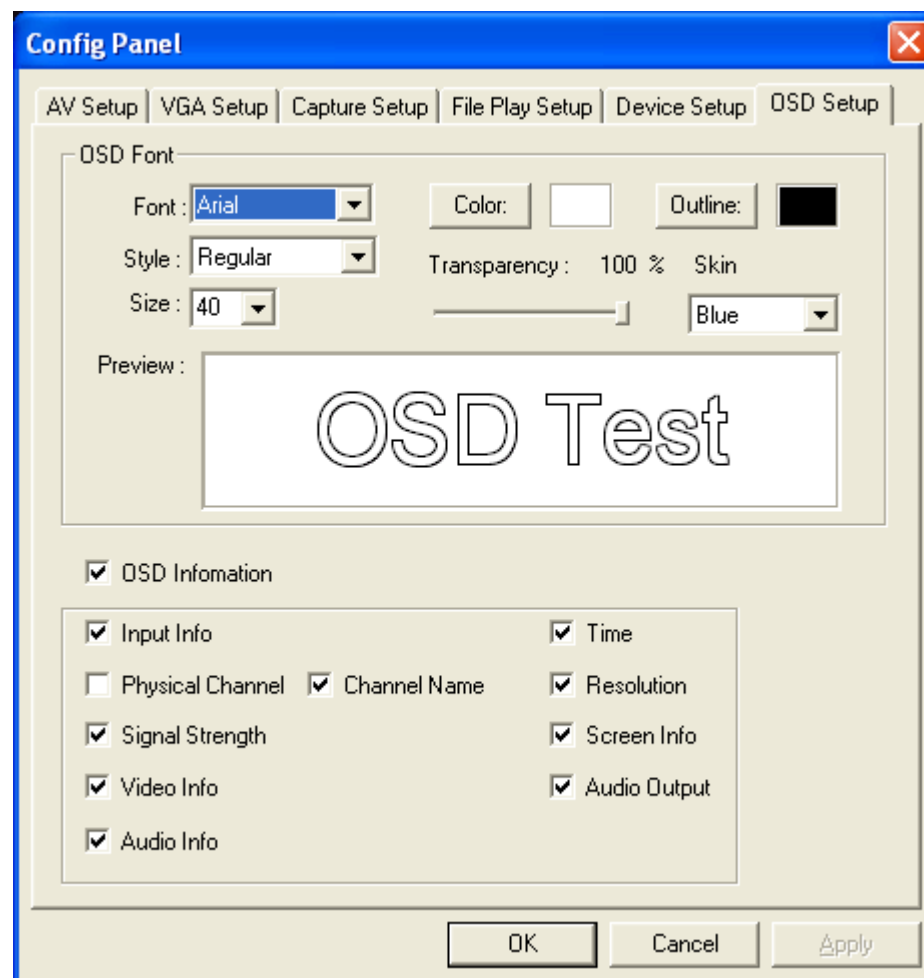
? GSelect default tape device. If there are many tape devices, choose one as default Tape Device. Press **Update** to add newly connected tape device to the list.

Turn off the Tape Device when closing MyHD

? GWhen turning MyHD off, select to turn off tape device that was set as default.



OSD Settings



OSD Font

- ? **Font:** Select Font of OSD. Applicable to entire OSD.
- ? **Style:** Select Style of OSD.
- ? **Size:** Select Size of OSD.
- ? **Color:** Select color of OSD letter.
- ? **Outline:** Select outline of OSD which is applicable to Display information only.
- ? **Transparency:** Select Transparency of OSD.
- ? **Skin:** Select skin of OSD.
- ? **Preview:** Previewing the entire setup.

OSD Information

- ? **Select** whether to display OSD information on the screen. Select items you wish to display.

If **OSD Information** is not selected, every OSD won't display. However, when switching play status, osd ,showing the status, always appears.(Ex. Play, Stop, REC, etc)

([Refer to Running MyHD in Full Screen Mode.](#))



Setting Channels

♦ Select channels

Entering numbers by keyboard or pushing numbers on the MyHD's remote control handset.

♦ Changing channels

To change channels :

1. Using channel buttons in the main control panel.
2. Using arrow keys in a keyboard.
3. Using channel buttons of the remote control handset.

♦ Changing Sub -channels

If there are sub-channels in digital broadcasting, sub -channel can be selected by using sub-channel button in the main control panel or by the remote control hand set.

♦ Favorite channel mode

To select favorite channels, using channel settings or a favorite channel button in the remote control handset.

♦ **Swich back to the previous channel** : Press <Shift+P> or ESC button to switch back to the previous channel when OSD is not displayed.

(In Full Screen Mode, for channel selection ,refer to [Channel Selection of Running MyHD in Full](#)

[Screen Mode](#))

Controlling Volume

To control volume:

1. Dragging the knob in the main control panel.
2. Using left/right arrow keys in a keyboard.
3. Handling volume button in the remote control handset.

Changing Input Type

8 types of input is possible for MyHD. 2 antenna including favorite channel is available. Input(Composite, S-Video) can be received from external A/V. Also, Saved Stream File of Digital TV from Computer hard disk and D-VHS VCR that is connected by IEEE1394 can be played. Futhermore, it can play DVD rom of a computer.

To change the input Type;

1. Using input button in the remote control handset.
2. Click "In" key in the main control panel.
3. Click right side button of a mouse.

(In Full Screen Mode, for changing input type, refer to [Input Mode Setting of Running MyHD in Full](#)

[Screen Mode](#))

Replay the Captured Transport Stream Files

♦ From VGA mode

1. Using file open in the main control panel.
2. Clicking the right button of a mouse, and selecting "File" in the pop up menu.
3. Using Drag & Drop method.

♦ From HD mode

Using the remote control handset to replay the files when HD mode is played.

1. Add files in "Play File List" from "Config Panel"/"Capture File List".
2. Push the **FAV** button button in the remote control handset.

On Full Screen Mode press FAV button of remote control to display file list for play. Use Channel Up or Channel Down button to

choose one and then press OK to actually play the file. If you wish to cancel press ESC button.

(refer to **File Play Setting of Running MyHD in Full Screen Mode**)

FF/REW : When playing a file, use remote control or number keys on keyboard to control Multiple FF/FF.

key board number keys

1(REW*1sec) 2(FF*1sec) 3(FF*2sec)
4(REW*2sec) 5(FF*4sec) 6(FF*sec)

For example if FF is set as 10 sec, pressing #5 will move the file to 40sec after.

Storing Transport Stream into a HDD

MyHD supports capturing Transport Stream and stores the stream into a HDD to display images any time.

If audio is not working properly during capturing, DMA mode should be selected in a HDD.

For the perfect capture, we recommend the PC system that is Pentium III 800MHz or higher specifications.

During capturing, if size of a file exceed its set value(refer to **Capture Mode Detail Options**), the file creates a new file by adding "_number" to original file name. (ex, Capture.tp, Capture_01.tp, Capture_02.tp, and so on.

The captured files will be continuously played by order of numbers when they are replayed.

To storing Transport Stream, Transport Stream Capture must be selected from "Config Panel"/"Capture Setup"/"Capture Mode".

◆ Capturing

Pressing **Capture** button of control panel or Rec button of remote control will save a file to directory that is assigned by capture directory.

The file name will be saved as assigned by capture detail option. (refer to Capture Settings) When "Add captured file to list" option in File Play Setting is selected, captured file will be automatically added to file list. During capturing, capture time can be set by pressing **Capture** button of control panel or **Rec** button of remote control. Each time you press the buttons, the time will be set in order of 10min, 30min, 60min, 90min, 120min, 180min, infinite.

Press **Stop** button to stop the capturing. Also, press **Play/Pause** button to pause the capturing.

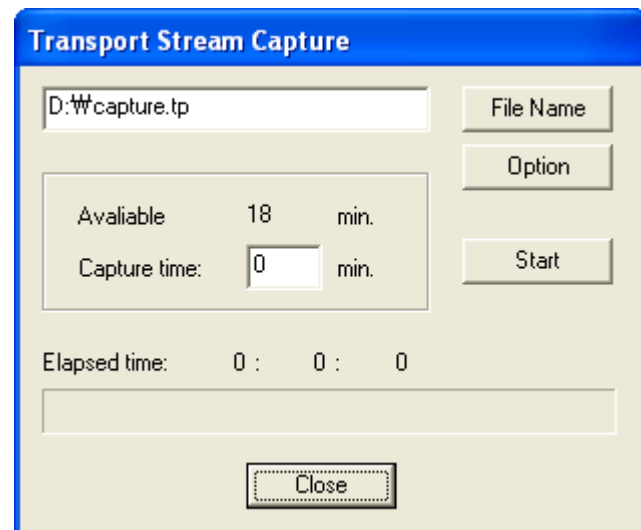
Press **Play/Pause** button to re-capture the file. Do the same for Full Screen Mode

While watching digital broadcast in HD mode, transport stream can be saved by pressing **Rec** button.

◆ Transport Stream Capture after setting Capture time

To decide a capturing time, select Capture from the below pop-up menu.

1. Type a desired capturing time in the Capture time box.
2. If you type "0", the capturing will be executed as long as possible.
3. To stop the capture, use **Stop** button.



Motion Video Capture

To execute Motion Video capture, select "Config Panel"/"Capture Setup"/"Motion Video Capture".

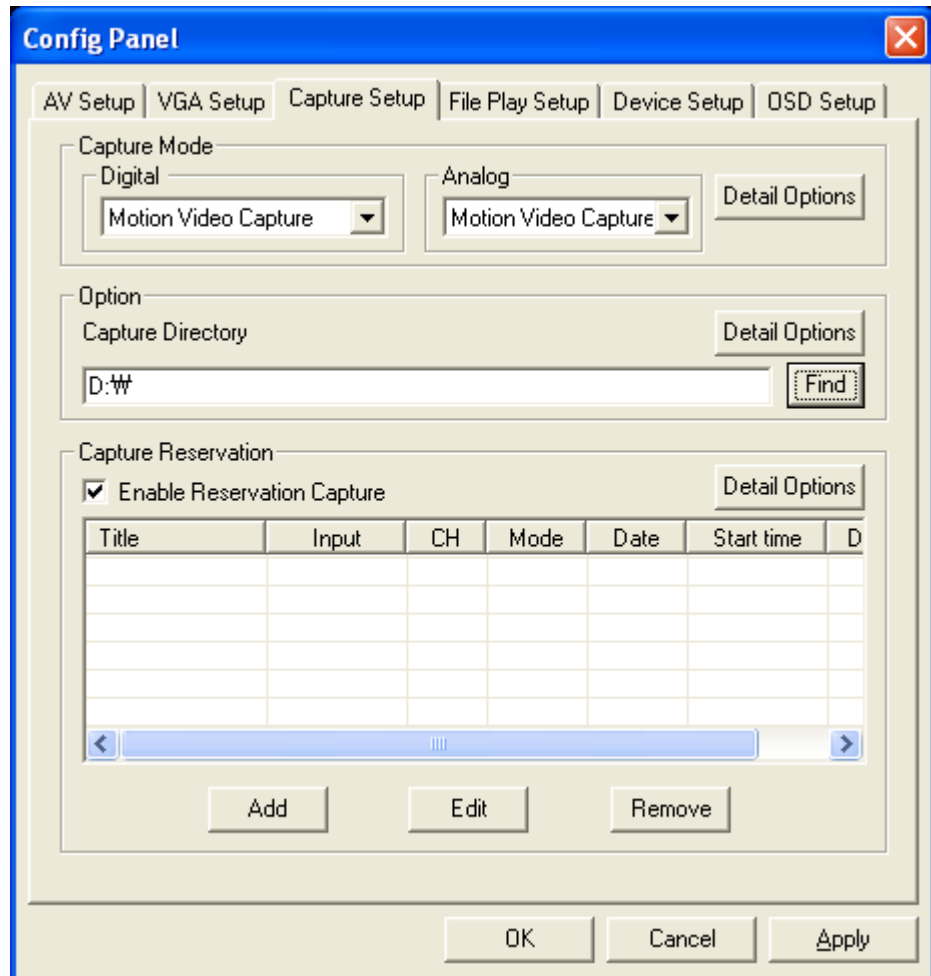
◆ **Capturing**

.Pressing **Capture** button of control panel or **Rec** button of remote control will save a file to directory that is assigned by capture directory.

The file name will be saved as assigned by capture detail option. (refer to Capture Settings) When **Add captured file to list** option in File Play Setting is selected, captured file will be automatically added to file list. During capturing, capture time can be set by pressing **Capture** button of control panel or **Rec** button of remote control. Each time you press the buttons, the time will be set in order of 10min, 30min, 60min, 90min, 120min, 180min, infinite.

Press **Stop** button to stop the capturing.

Do the same for Full Screen Mode.

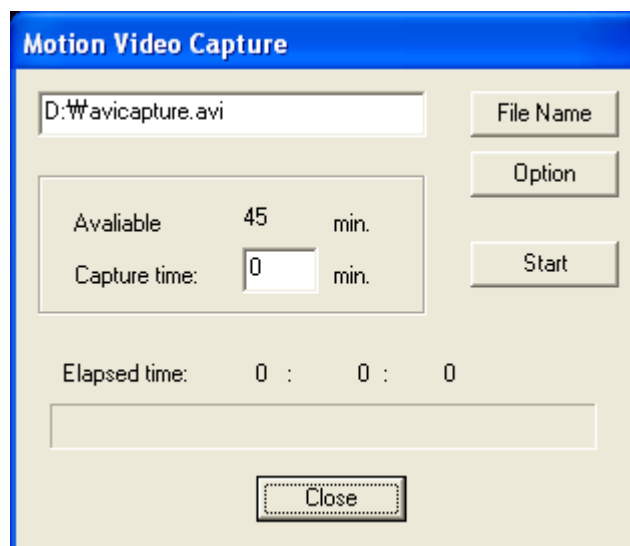


◆ **Motion Video Capture after Capture time is selected**

Execute same method with Transport Stream Capture after Capture time is selected .

During Motion Video Capture, the size of file cannot be limited.

The captured files can be replayed through Windows Media Player.



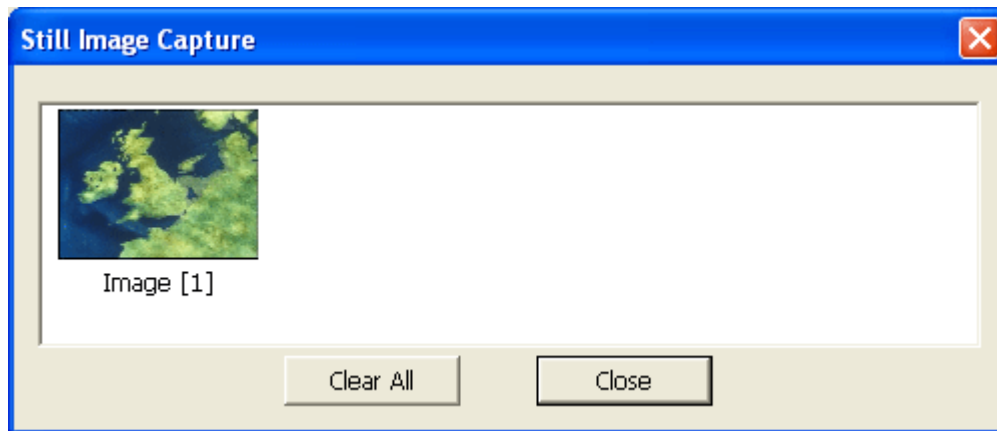
Still Image Capture

Still Image Capture is to capture a still image as a Bitmap (.bmp) or JPEG (.jpg) file

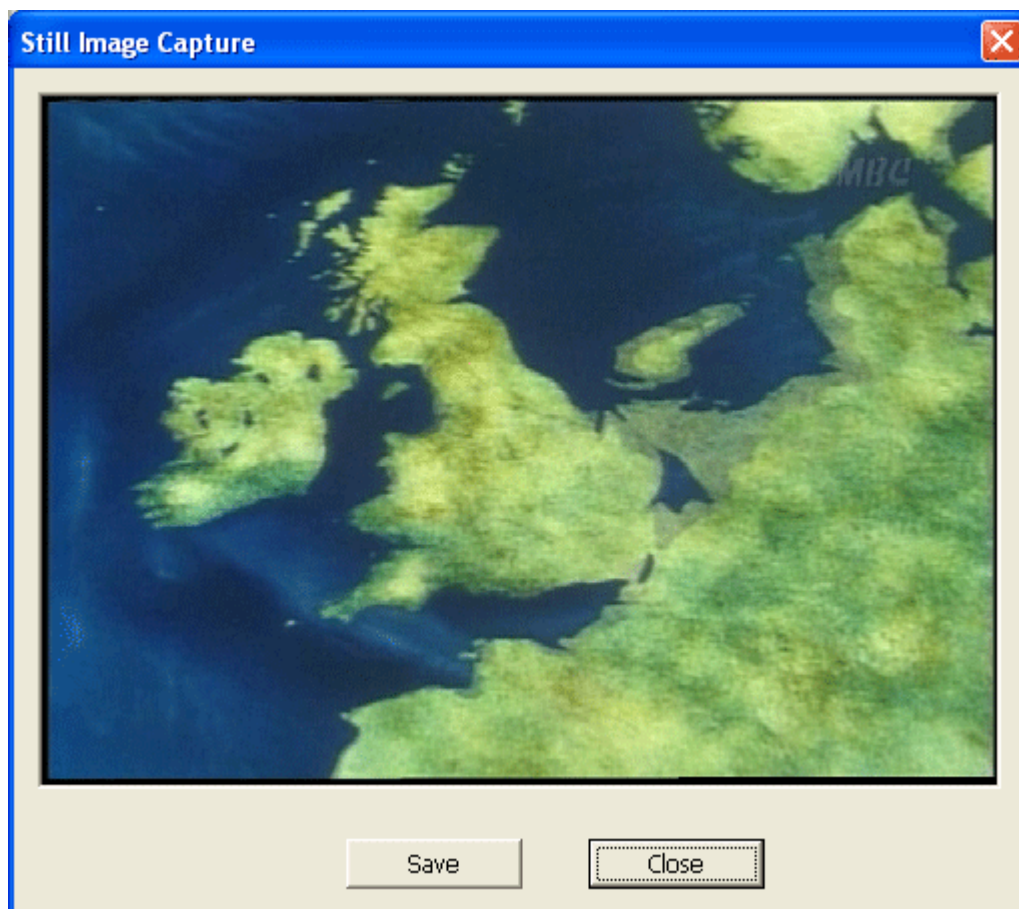
To execute Still Image Capture, select "Config Panel"/"Capture Setup" then select "Still Image Capture" in Capture Mode. In detailed options, either Field or Frame Mode can be selected.

◆ **Saving the still capture image after previewing**

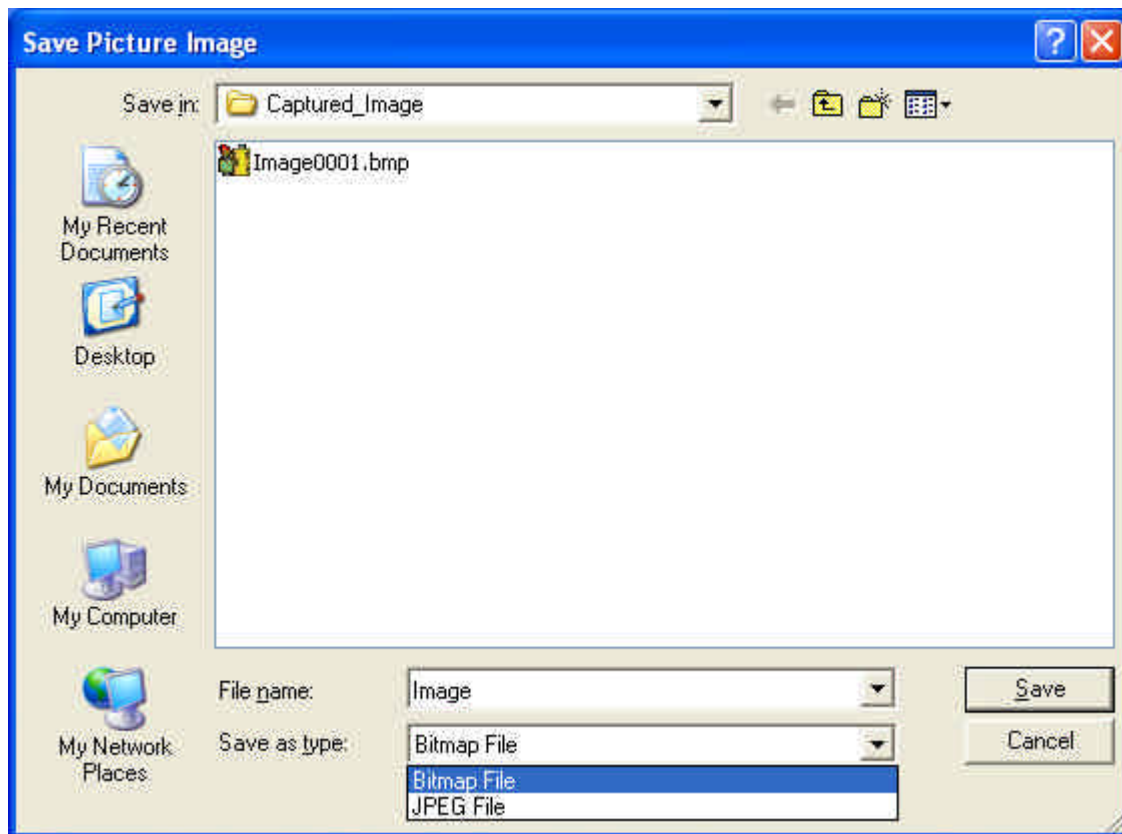
When you press Capture from popup menu, captured image will display as small image like below. Press Capture button of control panel or Rec button of remote control to keep on adding still image to capture list



To view a large image, double click on the small image.



? Click Save button, then the below window will be displayed.



? If you want to save image in JPEG file, please change the format from "Save as type" box.

◆ Saving the still capture image directly

Pressing Capture button of control panel or Rec button of remote control will save a file to directory that is assigned by capture directory.

Press (Shift+S) to capture still Image

Tape Recording/Replaying

For Installation of Tape device driver refer to Tape record and playback Settings

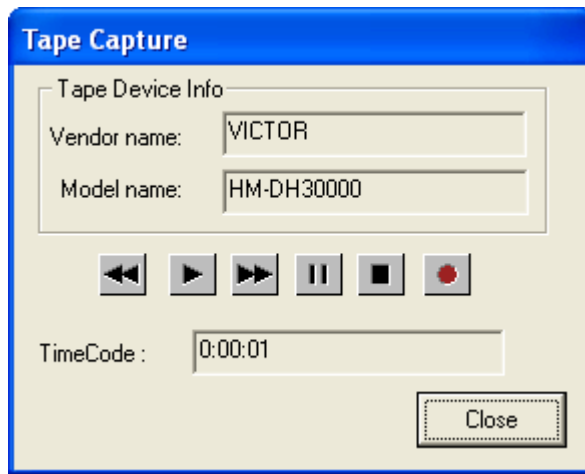
◆ For recording

1. Execute MyHD program, then click right button of the mouse.
2. Select "Config Panel>>Capture Setup>>Capture Mode>>Tape".
3. Click on "apply" and "OK".

Then choose either a or b method during broadcasting.

- a. Click "recording button" on the remote controller or main panel.
- b. Click right button of the mouse, then select "menu>>Capture(Ctrl+C)".

Popup window will appear, Click "Recording" after searching a right position of recording tape by the "Rew/FF" button.



♦ **For replaying**

1. Select "menu>>Tape(Ctrl+D)," then "Tape" will be displayed in the main control panel.

2. Use Play/FF/REW buttons for playback.

-When video output does not work because programs or settings are changed during playing, click "stop" then "play" button.

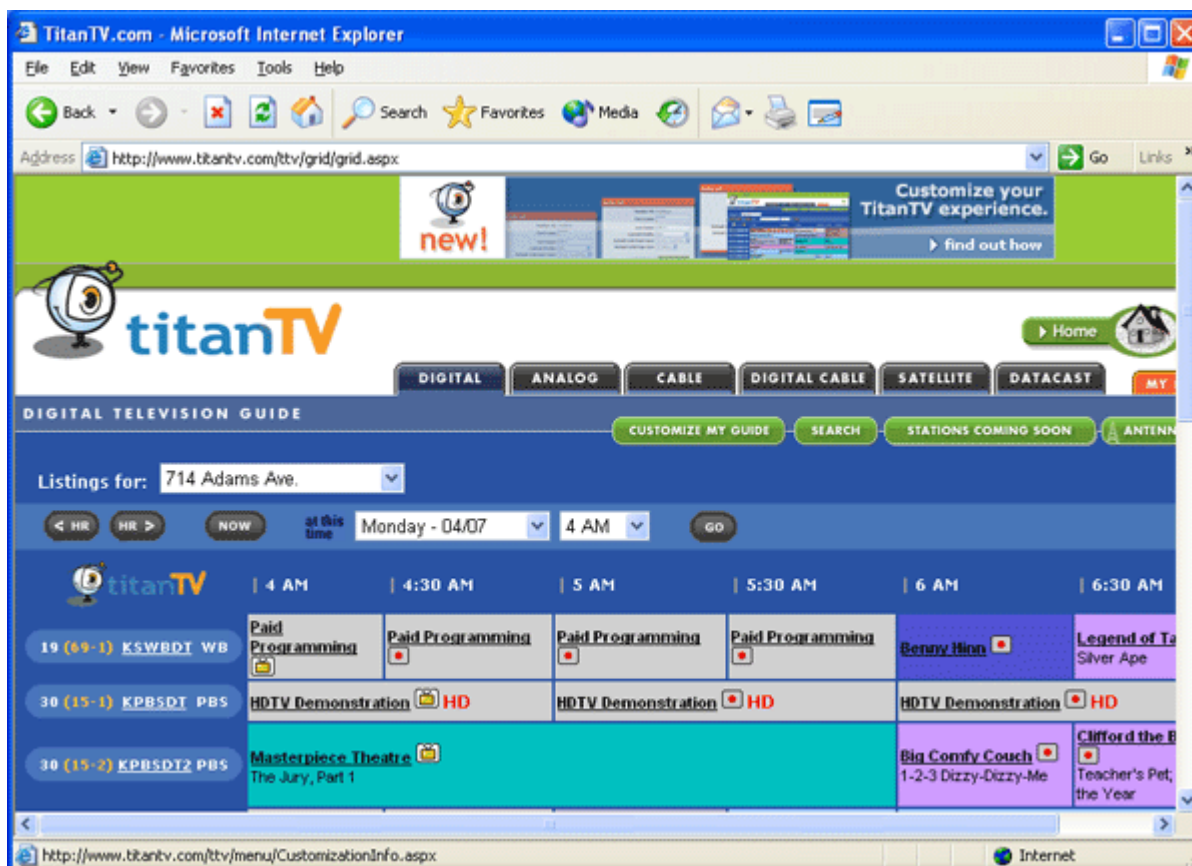
-If record/playback excutes on MyHD program, the power of VCR will be "ON" even though it is "OFF".



-"Time Record" is available even though the power of VCR is "OFF".

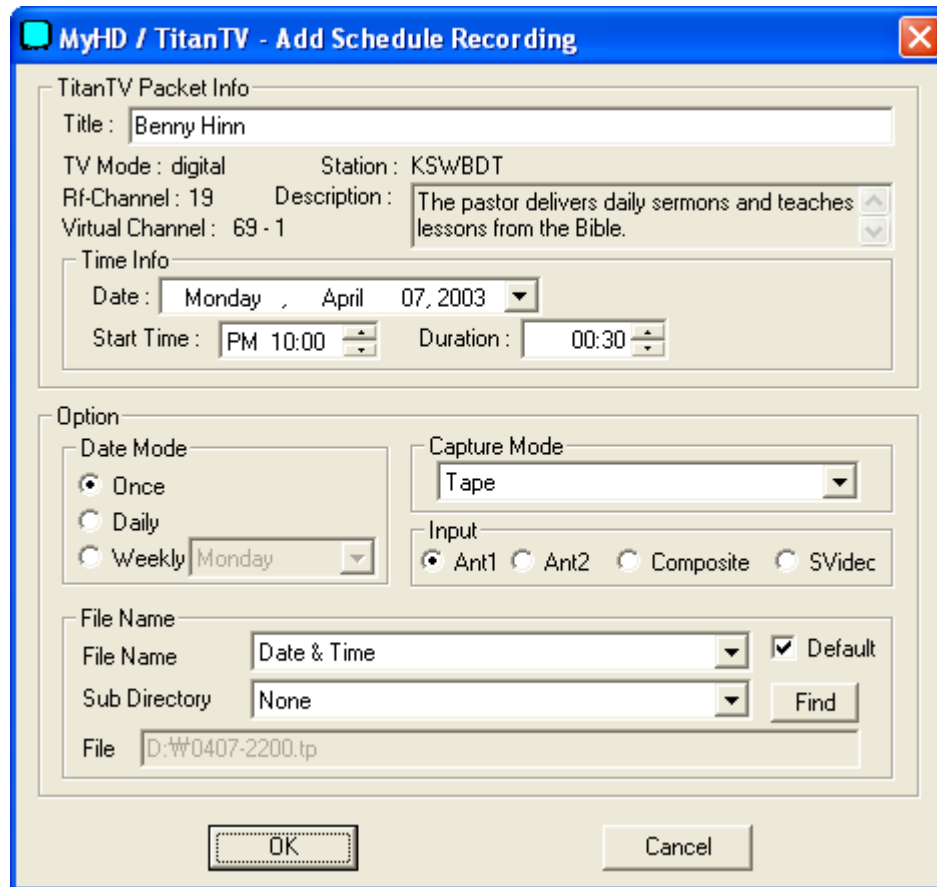
TitanTV Assistance

To be able to use TitanTV Epg, make sure to select **Using Titan TV Epg** from Config Panel of VGA Setup

MyHD is supporting the functions of watching TV and adding schedule through TitanTV program. The following window is displayed when you press the **GUIDE** on the Remote Controller or click the **Program Guide** on Configuration of main control panel while the MyHD is running.



When you click  button on the window, MyHD will be executed. If MyHD is already executing, a channel is changed to a selected channel. The following window is displayed when you click  button on the TitanTV's window.



Set "**Add Schedule Recording**" that you want to record , then click "OK."

The setting will be automatically added in "Config Panel/Capture Setup/Capture Reservation."

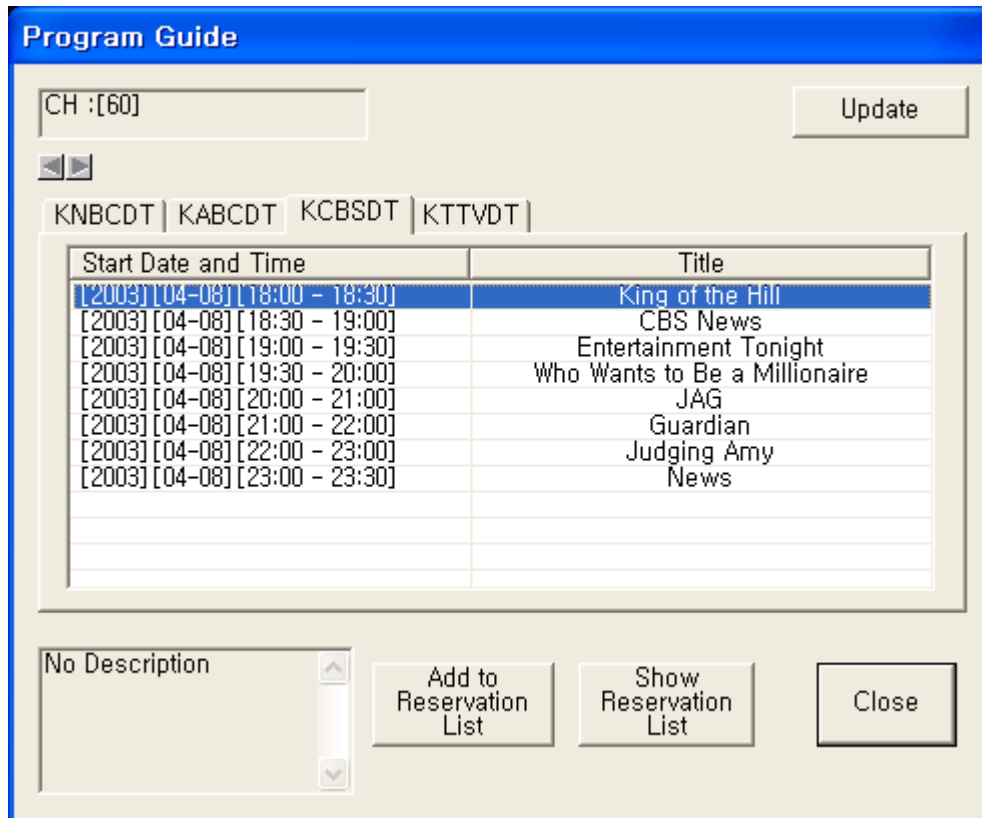
To record a TV program while watching a program, just click "**REC**" button on the Remote Controller or click "**Capture**" button on the main control panel after finishing the "**Capture Settings**".

MyHD Program Guide

• VGA mode

when you disable **Using TitanTV Epg** from Config Panel of VGA Setup, press the **GUIDE** on the Remote Controller or click the **Program Guide** on Configuration of main control panel to show **Program Guide** like below.

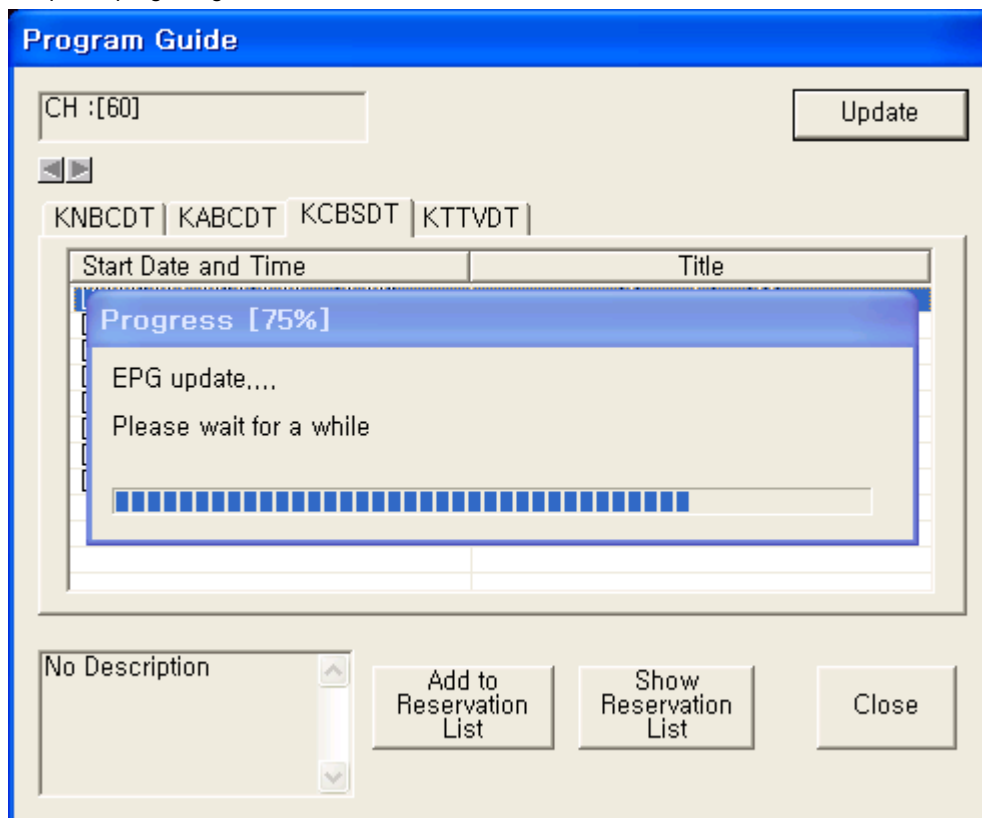
In this case, program guide of digital channel that transport PSIP can be viewed, and it can simply add wanted program to reservation capture list.



Add to Reservation List : Add to Reservation dialog appears. Choose a broadcast program to capture and select **Add to Reservation List** button. Old broadcast program can not be add to reservation capture list.

- **Show Reservation List** :Show the reservation list.

- Press **Update** button to update program guide.



♦ **Full Screen mode**

- Refer to [Program Guide of Running MyHD in Full Screen Mode.](#)

DVD Settings

? MyHD supports DVD play function.

To play a DVD :

1. Insert a DVD title in your DVD drive.
2. Click the play button on the main control panel.

Or

1. Drag a VOB or IFO file from file open window into the MyHD's overlay window.

To set Audio and Subtitle :

1. Use the "Pop-up menu/Audio/Subtitle"

Or

1. Use the remote control handset "AUDIO " button for the Audio and "CAPTION" button for the Subtitle.

? You can eject the DVD title from the drive using by the "eject" button on the main control panel. If audio is DTS format, only SDPIF output work.



Note : The functions of Menu, Title and Chapter play are not supported by MyHD, and if the DVD title has copy protection, the HD (Full Screen) Mode is not supported.

HD Mode & Overlay Window Mode

MyHD supports output of graphic card and HD output in a monitor ([refer to monitor configuration](#))

To view the HD mode;

1. Select HD mode from the pop-up menu, or
2. Click HD button in the main control panel, or
3. Double click the left button of a mouse on the overlay window

To exit the HD mode;

1. Double click the left button of a mouse, or
2. Hit Esc key in a keyboard

To use the remote control handset;

HD mode and an overlay window mode can be activated by HD button on the remote control handset.

Command Line Option

- ? MyHD.exe /f : execute file mode
- ? MyHD.exe /t :execute tape mode
- ? MyHD.exe /v : execute Composite mode
- ? MyHD.exe /s : execute S-Video mode
- ? MyHD.exe file name (TP file or VOB file) : Files will be played after MyHD start to run.
- ? MyHD.exe /d : execute DVD mode
- ? MyHD.exe /h : execute HD (Full screen) mode



Tape record and playback Settings

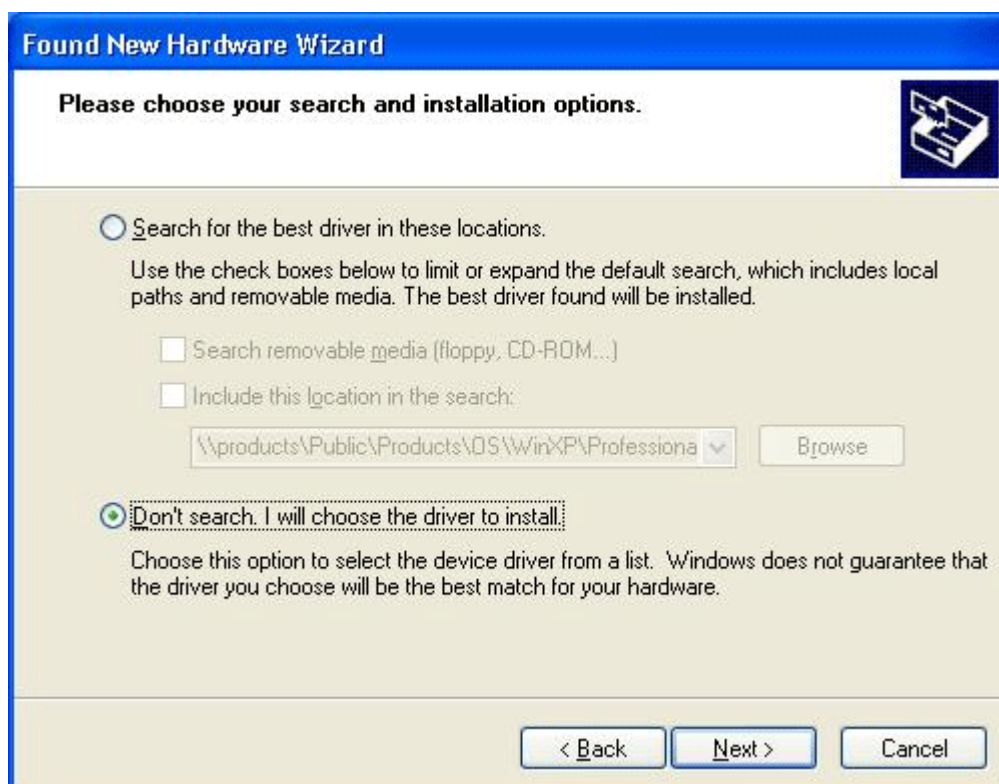
Tape (D-VHS) Record and Playback Settings

* It is working on Windows XP only.

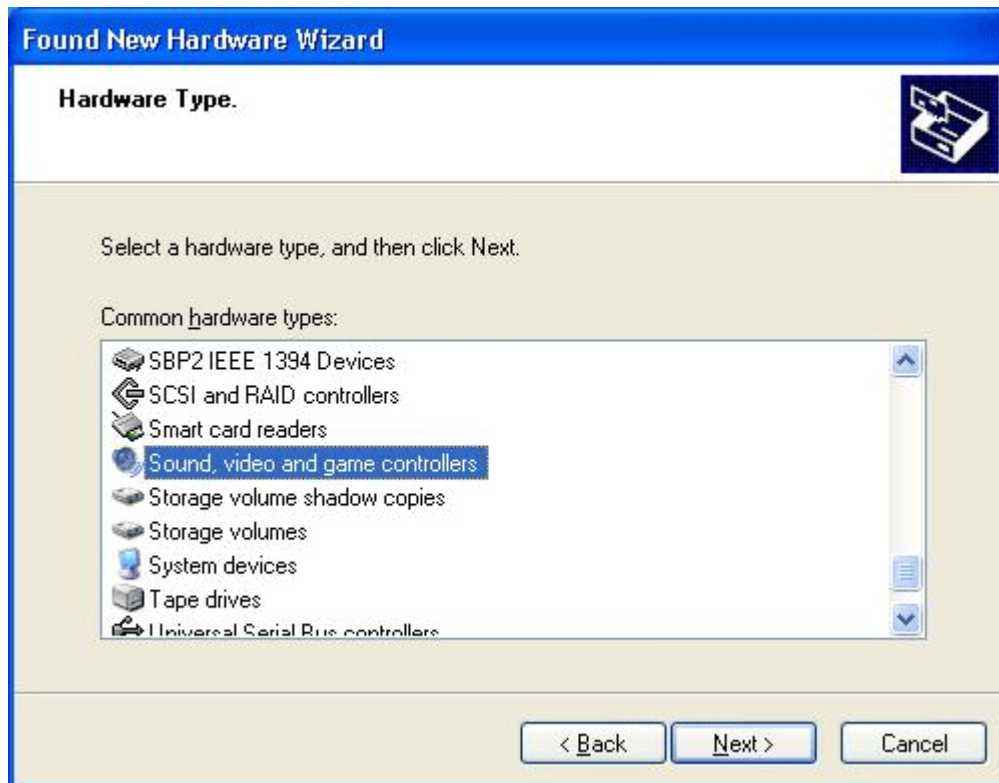
◆ For settings of VCR driver



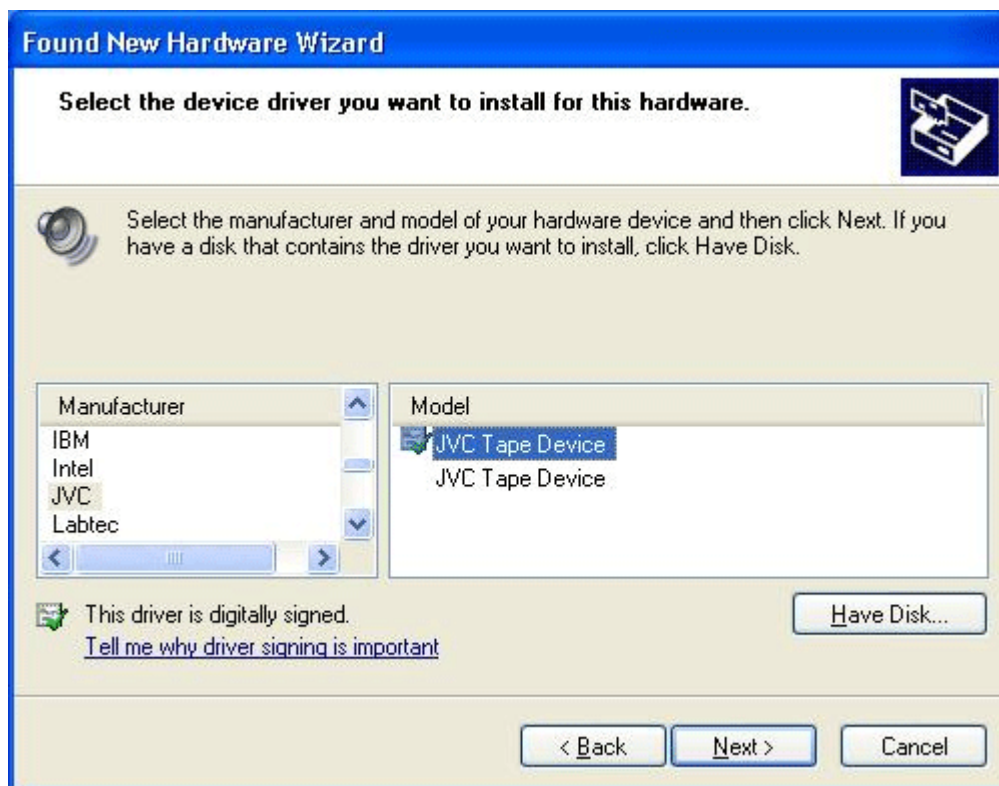
1. **Found New Hardware Wizard** boxes will be displayed when a D-VHS is connected to your XP machine via firewire.
2. Install software for "**AV/C Tape Recorder>>Player**". Do not install software for "**AV/C Tuners**".
3. Choose "**Install from a list or specific location(Advanced)**".
4. Click on "**Next >**".



5. Choose "**Don't search, I will choose the driver to install**".
6. Click on "**Next >**".



7. Select "Sound, video and game controllers" option and click on "Next >".



8. If you have a JVC Victor HM-DH30000, select "JVC" as the manufacturer and "JVC Tape Device" as the model and click on "Next >".



9. Click on "**Finish**".

10. JVC D-VHS tape deck is ready to be used by DirectShow applications.

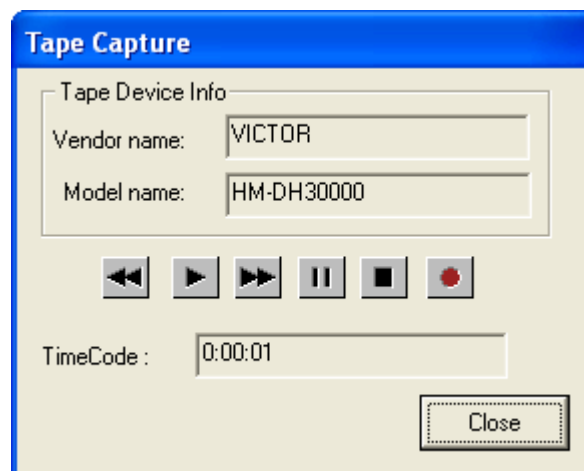
◆ **For recording**

1. Execute MyHD program, then click right button of a mouse.
2. Select "**Config Panel>>Capture Setup>>Capture Mode>>Tape**".
3. Click on "**apply**" and "**OK**".

Then choose either a or b method during broadcasting.

- a. Click "**recording**" button on the remote controller or main panel.
- b. Click right button of a mouse, then select "**menu>>Capture(Ctrl+C)**".

Popup window will be appeared, Use "**Rew/FF**" to search a right position from tape, then press "**Recording**" to start tape recording.



◆ **For replaying**

1. Select "**menu>>Tape(Ctrl+D)**," then "**Tape**" will be displayed in the main control panel.
 2. Use Play/FF/REW buttons for playback.
- Try clicking "**stop**" / "**play**" button, if problem occurs while playing a video.
 - MyHD has control over power of Tape Device that has connection to MyHD.
 - "**Time Record**" is available even though the power of VCR is "OFF".



MyHD's Hot Keys

Hot Key List for MyHD program

	Information	Hot Key
File Open	Display a file open window	Ctrl + O
Exit	Exit from MyHD Program	Ctrl + X
Play and Stop	Play and stop video The selected file will be played if a file list is shown in HD mode. (To view the file list, press "NEXT" button on the remote control handset)	Space
Previous File	Play the previous file in the file list	Ctrl +
Next File	Play the next file in the file list	Ctrl +
Previous File	(same as "PREV" button on Remote Control Handset) Open and select the file list in HD mode	Ctrl + Shift +
Next File	(same as "NEXT" button on Remote Control Handset) Open and select the file list in HD mode	Ctrl + Shift +
Fast Forward	Forward the playing file by a selected skip time (refer to 'File Play Setup')	Shift +
Rewind	Backward the playing file by a selected skip time	Shift +
Number Keys (0~9)	Change a channel using by numbers	0~9
Move Channels	Change channels in memorized channels If "Favorite Channel Mode" is selected, changing channels in favorite channels	,
Information	Show information of current state	Ctrl + Enter
Return	Exit from the file list in HD mode	Shift + ESC
Mute	Press to temporarily cut off the sound	Ctrl + U
CAPTION	Display available captions (It will be supported in next version)	Ctrl + T
GUIDE	Display the on-screen Electronic Program Guide (EPG). (It will be supported in next version)	Ctrl + G
Audio	Select an analog audio among Stereo, Mono, and Bilingual. If several digital audio signals exist, one of audio will be selected in the order.	Ctrl + A
MENU	Display menu on HD mode(It will be supported in next version).	Ctrl + E
Aspect Ratio	Select an aspect ratio among Letter Box, Full and Zoom	Ctrl + R
HD mode (Full Screen)	Select the HD or Overlay window mode	Ctrl + H
Stop	Stop the play	Ctrl + Space
Record	(same as the "REC" button on the remote control handset) Record the current broadcast according as "Capture Mode."	Shift + C
Capture	Display "Capture window" to input file name and capture time.	Ctrl + C
Channel Setting	Display "Channel Setting" window to set up channels.	Ctrl + L
Input Mode	Select the input of Antenna1, Antenna2, Composite, S- Video, DVD or Tape (only for Windows XP) in the order	Ctrl + I
Antenna1	Select antenna1 as input	Ctrl + 1
Antenna2	Select antenna2 as input	Ctrl + 2
Composite	Select Composite as input	Ctrl + v
S-Video	Select S-Video as input	Shift+ v
File	Select an input to play files	Ctrl + f
DVD	Select an input to play DVD	Shift + d

Tape	Select an input to interface with a D-VHS device	Ctrl + d
Favorite Channel	Select or cancel the current channel as a favorite channel	Shfit + M
Sub-channel	Select sub-channels in the order if there are sub-channel on broadcast	Ctrl + S
Previous Channel	Alternate between the current channels and the last channel that was displayed.	Shift + p
Still Image Capture	Capture Still Image	Shift + S
Using Separate Monitor	Select or cancel the settings of separate monitor. It is the shortcut for “Config Panel/VGA Setup/Using Separate Monitor.”	Ctrl + Shift + M
Overlay Window Mode	Display the overlay window on your display device. It is the shortcut for “Config Panel/VGA Setup/Show Overlay Window.”	Ctrl + Shift + O
Video Resolution	Select a resolution by a number. 1. 1920x1080I 2. 1280x720P 3. 720x480P 4. 720x480I 5. 1440x1080I 6. 1024x768P 7. 1360x768P 8. 1280x1024P 9. 800x600P 10. 864x480P It is the shortcut for “Config Panel/AV Setup/Video Resolution.”	Ctrl+Shift+#
Next Resolution	Select a next resolution in the order. It is shortcut for “Config Panel/AV Setup/Video Resolution.”	Ctrl+N

