

Alarm System

INSTRUCTION MANUAL

MODEL:HY757



Hosmart was founded in 2012, the brainchild of a group of friends designed Motola products. Fast forward a few years and we're now the industry leader in home intercom and security products.

Our vision is to create a world global leader in home intercom solutions and products. We design and engineer residential intelligent home solution and intercom systems. Our company philosophy is to direct our efforts based on our client's wishes.

Hope you happiness and enjoy with our products. Any products problem or damage by delivery, we can offer a replacement to you.

If you have more question, you can also
E-mail to us : service@hosmartmall.com
or visit our Hosmart website: www.hosmartmall.com
Or scan the QR scan.

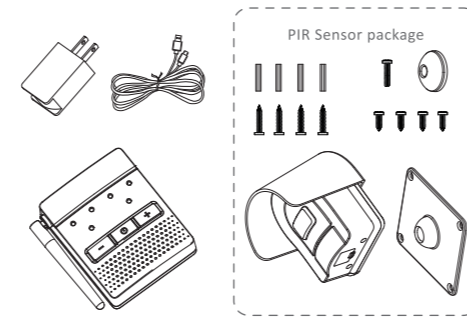


1

Overview

The Wireless Motion Alert has up to over 3000 feet (800 m) range. It uses a Passive Infra-Red (PIR) Motion Sensor to detect movement of people and vehicles, while allowing small animals to pass through undetected. The Base Station is powered by AC adapter and the 4 AA batteries supply power in case of a power outage.

Carton Inventory



2

Operation & Features

1. BASE STATION



On/off
To turn the Base Station on and off, hold down the power button until you hear the on/off tone.

Volume
The Base Station is equipped with adjustable volume controls. The lowest volume setting is the mute feature.

Batteries
If the AC adapter is not connected, the AA batteries in the Base Station are low, the low battery will beep every 10 minutes until the batteries are replaced.

Low battery indication
The 18650 batteries in the PIR Motion Sensor will last up to over 1 years

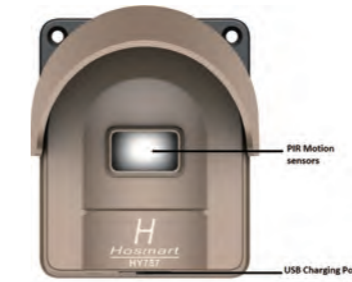
3

depending on use. If the PIR Motion sensor battery are low, the Low battery LED indication in the base station will light.

Line1 to Line4 LED indication

Zoom1 to Zoom4 LED indication. When the motion is detected. The corresponding Zoom LED indication will flash.

2. Passive Infra-Red (PIR) Motion Sensor



4

Assembly & Setting

a. Plug in the Base Station.

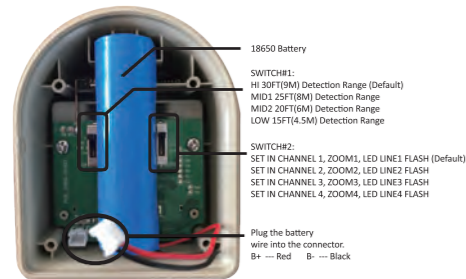


4AA batteries are optional if necessary.



5

b. Install 18650 battery in PIR motion sensor, Please help to plug the battery wire into the connector.

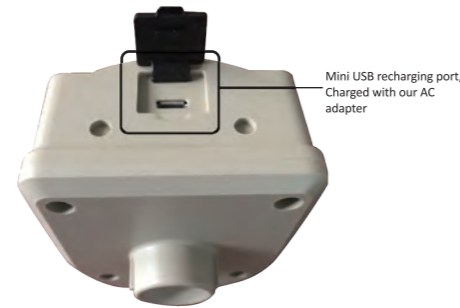


c. Test PIR Motion Sensor by waving hand in front of sensor. The Base Station will ring number of times indicating which sensor has been activated.



6

d. Before to install the PIR Motion SENSOR, Please to recharge the Motion SENSOR with 18650 battery over 5 hours to make sure the battery is in full charge.



PIR MOTION SENSOR INSTALLATION

a. Mount PIR Motion Sensor horizontally on solid surface 3-5feet (1-1.5m) off the ground and within 1/2 mile (0.8km) of Base Station (rotate sensor to access screw holes). Units should be able to swivel as needed.

b. Attach sun/rain/snow shield

c. Vehicle Alert Installation:
For cars, the best mounting position is about 4 feet (1.2m) high, between 10-20 feet (3-6m) back, and angled to see the back of car after passing the sensor.

7

Troubleshooting

● **The PIR Motion Sensor set is OK, but the base station does not respond.**
Please make sure Assembly & Setting step b, double check the battery wire was plugged in the connector.

● **PIR Motion Sensor is detecting motion only part of the time.**
Ensure the PIR Motion Sensor is set to the high sensitivity setting (see Assembly & Setting step b). To detect cars. It is best to mount PIR Motion sensor at height of car's motor and have it between 10-20FT (3-6M) from the road. Swivel sensor as needed.

● **The Alert is giving false alarms.**
Check for moving tree branches or insects in sensor window. PIR Motion Sensor can also be triggered by light shining directly in sensor window. Such as reflected sunlight. Or motion in front of a light source. It is possible that condensation has built up on the sensor. Wipe condensation from PIR Motion sensor with cotton swab. Let it set inside for a few hours, open to the air, without the 18650 battery and it should correct itself.
Check Sensor Switches on PIR Motion Sensor. See Switch settings.

● **Base station beeps every 10 minutes.**
The batteries in the base station are low. Replace the 4 pcs AA batteries.

● **Base station low battery LED lighting.**
Check the PIR Motion Sensors, recharging the 18650 battery in PIR Motion Sensors.

● **The Alert is not getting expected transmission range.**
Double check both antennas vertical and keep PIR Motion Sensor antenna away from trees and metal objects. Ensure Base Station is in clearest possible sight of the PIR Motion Sensor. The less objects between the devices, the longer the range.

8

Limited 12 months Warranty

This product is warranted by Seller against manufacturing defects in material and workmanship under normal use for twelve(12) months from the date of purchase from Seller.
EXCEPT AS PROVIDED HEREIN, SELLER MAKES NO EXPRESS WARRANTIES AND ANY IMPLIED WARRANTIES, INCLUDING THOSE OF MERCHANTABILITY AND FITNESS FOR A PARTICULAR PURPOSE, ARE LIMITED IN DURATION TO THE DURATION OF THE WRITTEN LIMITED WARRANTIES CONTAINED HEREIN. EXCEPT AS PROVIDED HEREIN, SELLER SHALL HAVE NO LIABILITY OR RESPONSIBILITY TO CUSTOMER OR ANY OTHER PERSON OR ENTITY WITH RESPECT TO ANY LIABILITY, LOSS OR DAMAGE CAUSED DIRECTLY OR INDIRECTLY BY USE OR PERFORMANCE OF THE PRODUCT OR ARISING OUT OF ANY BREACH OF THIS WARRANTY, INCLUDING, BUT NOT LIMITED TO, ANY DAMAGES RESULTING FROM INCONVENIENCE, LOSS OF TIME, DATA, PROPERTY, REVENUE, OR PROFIT OR ANY INDIRECT, SPECIAL, INCIDENTAL, OR CONSEQUENTIAL DAMAGES, EVEN IF SELLER HAS BEEN ADVISED OF THE POSSIBILITY OF SUCH DAMAGES.

In the event of a product defect during the warranty period, take the product and the sales receipt as proof of purchase date to Seller. Seller will, at its option:
(a) correct the defect by product repair without charge for parts and labor;
(b) Replace the product with one of the same or similar design;
(c) Or refund the purchase price. All replaced parts and products, and products on which a refund is made, become the property of Seller. New or reconditioned parts and products may be used in the performance of warranty service. Repaired or replaced parts and products are warranted for the remainder of the original warranty period. You will be charged for repair or contact us:
Customer service
E-mail: service@hosmartmall.com
Fax number: (852) 2331 6834

9

In case if you need to return package to us, please write down the RMB# and returning date outside the mailing box. This will speed up our process to handle your returned package and refund or send replacement to you in a short time. Thanks a lot.
Replacement of the product made after the expiration of the warranty period. This warranty does not cover:
(a) damage or failure caused by or attributable to acts of God, abuse, accident, misuse, improper or abnormal usage, failure to follow instructions, improper installation or maintenance, alteration, lightning or other incidence of excess voltage or current;
(b) any repairs other than those provided by a Seller,
(c) consumables such as fuses or batteries;
(d) cosmetic damage;
(e) transportation, shipping or insurance costs; or
(f) costs of product removal, installation, set-up, service adjustment or reinstallation.
We hope you to have pleasant shipping experience with us. We would be appreciated to receive your comment or any dissatisfaction with your purchase, please contact us prior to leave us feedback. We guarantee your completed satisfaction for this transaction.

Please kindly note that our office hour is:
9:00 a.m. to 5:00 p.m. (GMT+8) Monday to Friday.
Office closes on Saturday, Sunday and public holidays. We apologize for any late reply of your E-mail during holidays.

U.S. Warehouse (return address):
4070 Mission Blvd Montclair CA
91763
United States
Vingoo 1039

This product produced by
Macross Microelectronics (HK) LIMIT
FLAT/RM KY001 UNIT 3 27/F HO KING COMM CENTRE
NO. 2-16FA YEEN STREET MONGKOK KL
EMAIL: service@hosmartmall.com
TEL: +86-135 2029 1156

10

FCC Statement

This device complies with Part 15 of the FCC rules. Operation is subject to the following two conditions: 1) this device may not cause harmful interference, and 2) this device must accept any interference received, including interference that may cause undesired operation.

Note: This equipment has been tested and found to comply with the limits for a Class B digital device, pursuant to part 15 of the FCC Rules. These limits are designed to provide reasonable protection against harmful interference in a residential installation. This equipment generates uses and can radiate radio frequency energy and, if not installed and used in accordance with the instructions, may cause harmful interference to radio communications. However, there is no guarantee that interference will not occur in particular installation. If this equipment does cause harmful interference to radio or television reception, which can be determined by turning the equipment off and on, the user is encouraged to try to correct the interference by one or more of the following measures:
--Reorient or relocate the receiving antenna.
--Increase the separation between the equipment and receiver.
--Connect the equipment into an outlet on a circuit different from that to which the receiver is connected.
--Consult the dealer or an experienced radio/TV technician for help.

Changes or modifications not expressly approved by the party responsible for compliance could void the user's authority to operate the equipment.

FCC Statement

This equipment complies with FCC radiation exposure limits set forth for an uncontrolled environment. User should avoid un-intended operation of usage when it is collocated with other transmitters or antenna.

This device must operate with a minimum distance of 20 cm between the radiator and user body.

11