

TR[®]

Kundai[™]

Kundai™

Wireless Stereo Headset

Table of Contents

1. Package Contents
2. Headset Controls / Base Station
3. Battery Installation / Power Save Mode / Wireless Range
4. Xbox 360 Component/Composite /VGA Setup
5. Xbox 360® HDMI Setup
6. Xbox 360® E Setup
7. PlayStation®3 HDMI/Component /Composite Setup
8. PlayStation®4 Connect to Controller Setup
9. PlayStation®4 Back of TV Setup
10. Wii U GamePad™/Mobile Devices Setup / Sync Headset to Base Station
11. PC / Mac

Kundai™

Wireless Stereo Headset

A



Kundai Headset

B



Base Station

C



USB Cable

D



3.5mm Mobile /Wii U™/PS4 Cable

E



3.5mm Audio Cable

F



Xbox LIVE®
Communication Cable

G



RCA Connection Cable

H



Analog Audio Adapter

I



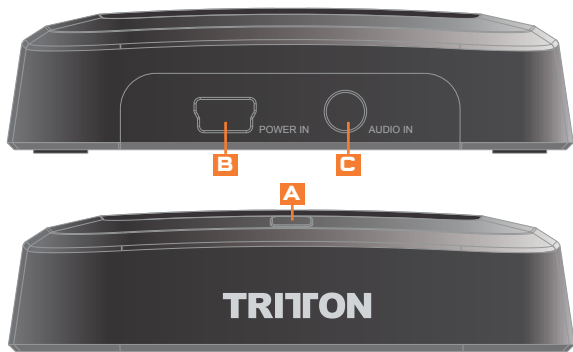
2x AA Batteries

Headset Controls

- A** Push to turn Headset ON/OFF. Press and hold for 3 seconds to Sync Headset to Base Station. See page 10 for more information on syncing the Headset to the Base Station.
- B** Use to adjust the volume of the game audio.
- C** Use to adjust the volume of the voices of other players or music/game volume when using 3.5mm jack on headset
- D** Fold the mic up to mute.

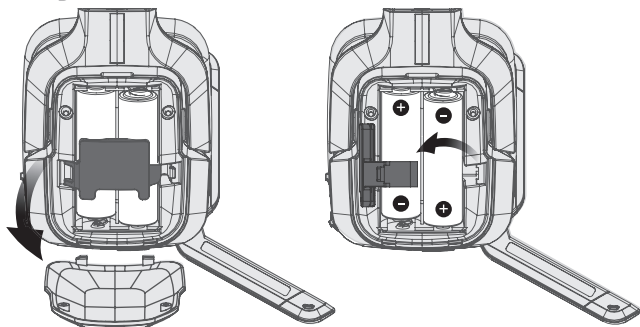


Base Station



- A** Flashing: Syncing or searching for Headset.
Solid: Connected to a Headset while Base Station is powered ON.
OFF: Base Station is powered OFF or in standby mode.
Press and hold for 3 seconds to put Base Station in Sync mode. See page 10 for more information.
- B** USB Port
- C** Audio Input

Battery Installation



Insert 2 AA batteries into the Headset matching the polarity as shown.

When the battery level is low, the power LED will flash.

Battery life = 20 hours (based on constant audio playback at medium volume).

Power Save Mode

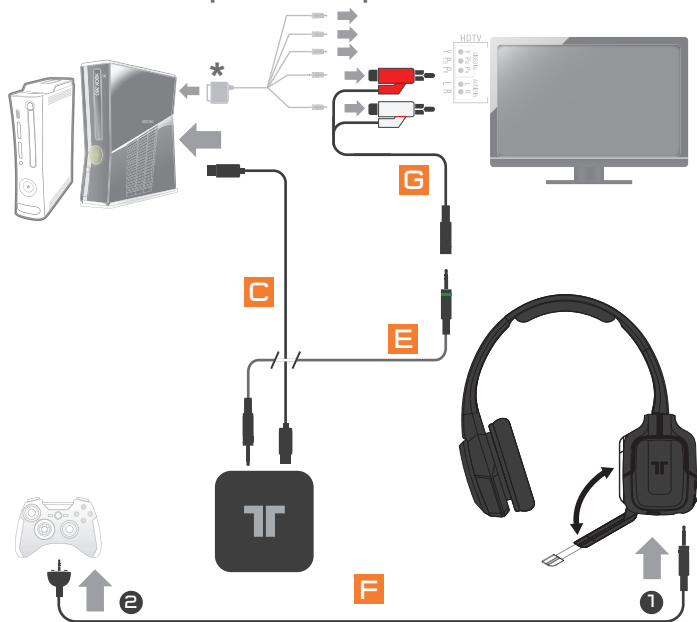
If the Headset receives no audio for 10 minutes, the Headset will power down to save battery power and the LED on the Base Station will flash.

Wireless Range

The Kunai Headset transmits audio via digital radio frequency (RF) and has an operating range of 33 feet/10 meters in any direction. Please remain within this range for optimal performance. Avoid placing the Base Station on top of a metal surface or behind other devices that use RF. If the Headset is not operating properly within the 33-foot/10-meter range, try moving the Base Station to a different location for improved performance.

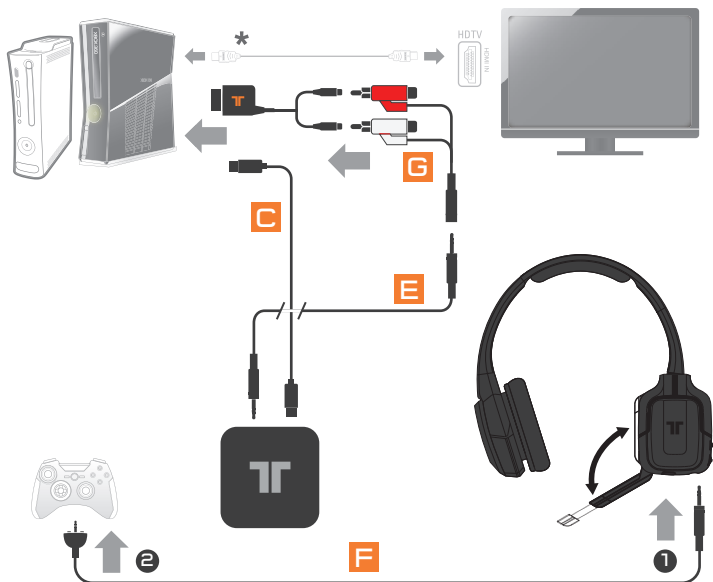


Xbox 360 Component/Composite/VGA



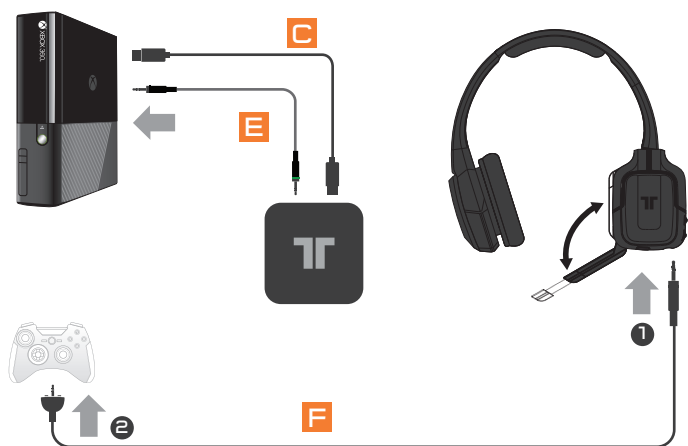
- 1** Plug one end of the USB Cable **C** into a USB port on the gaming console. Plug the other end of the USB Cable **C** into the USB Port of the Base Station.
- 2** Plug Component/VGA/Composite **G** Cable into Xbox 360.
- 3** Connect RCA connection Cable to red/white connectors on the Component/VGA/Composite Cable.
- 4** Plug 3.5mm Audio Cable **E** into the Audio Input of the Base Station.
- 5** Connect the Headset Connector Cable **E** in the proper order:
 - 1** Connect Headset Connector Cable to the Headset Connector Port on the Headset.
 - 2** Connect puck side of Headset Connector Cable into Xbox 360-compatible controller.
- 6** Insert the batteries into the Headset. See page 10 for more information.
- 7** Power ON the Xbox 360 Console and Headset.
- 8** To confirm Xbox LIVE settings, press the "Xbox Guide Button" when a game is loaded, and go to Personal Settings > Voice. Ensure that "Headset Only" is selected.

Xbox 360® HDMI



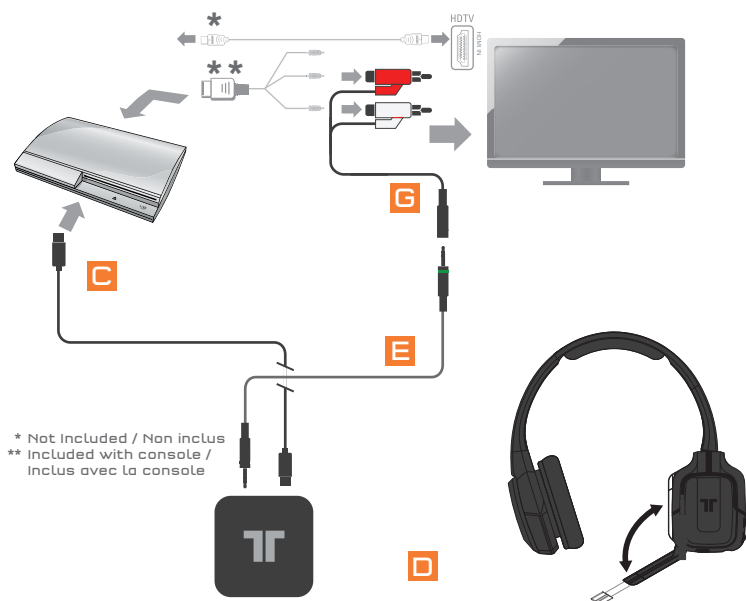
- 1** Plug one end of the USB Cable **C** into a USB port on the gaming console. Plug the other end of the USB Cable **C** into the USB Port of the Base Station.
- 2** Plug Analog Audio Adapter **H** into Xbox 360 AV Port.
- 3** Plug Analog Audio Adapter **H** into RCA connector Cable. **G**
- 4** Plug 3.5mm Audio Cable **E** into the Audio Input of the Base Station.
- 5** Connect the Headset Connector Cable **F** in the proper order:
 - 1** Connect Headset Connector Cable to the Headset Connector Port on the Headset.
 - 2** Connect puck side of Headset Connector Cable into Xbox 360-compatible controller.
- 6** Insert the batteries into the Headset. See page 10 for more information.
- 7** Power ON the Xbox 360 Console and Headset.
- 8** To confirm Xbox LIVE settings, press the "Xbox Guide Button" when a game is loaded, and go to Personal Settings > Voice. Ensure that "Headset Only" is selected.

Xbox 360® E



- 1** Plug one end of the USB Cable **C** into a USB port on the gaming console. Plug the other end of the USB Cable **C** into the USB Port of the Base Station.
- 2** Plug 3.5mm Audio Cable into the Audio Input of the Base Station. Plug the other end into the 3.5mm A/V port on the Xbox 360.
- 3** Connect the Headset Connector Cable in the proper order:
 - 1-** Connect Headset Connector Cable to the Headset Connector Port on the Headset.
 - 2-** Connect puck side of Headset Connector Cable into Xbox 360-compatible controller.
- 4** Insert the batteries into the Headset. See page 10 for more information.
- 5** Power ON the Xbox 360 Console and Headset.
- 6** To confirm Xbox LIVE settings, press the "Xbox Guide Button" when a game is loaded, and go to Personal Settings > Voice. Ensure that "Headset Only" is selected.

PlayStation®3 HDMI/Component/Composite



- 1** Plug one end of the USB Cable **C** into a USB port on the gaming console. Plug the other end of the USB Cable **C** into the USB Port of the Base Station.
- 2** Plug RCA Connector Cable **G** into the red/white connectors of the PS3 AV Cable
- 3** Plug the 3.5mm Audio Cable into the RCA connector cable **G**
- 4** Plug 3.5mm Audio Cable **E** into the Audio Input of the Base Station.
- 5** Insert the batteries into the Headset. See page 3 for more information.
- A** Power ON the PlayStation 3 Console and Headset.

PlayStation®Network

On the PS3 go to Settings > Sound Settings > Audio Output Settings and change the audio output to be "Audio Input Connector/SCART/AV Multi."

On the PS3 go to Settings > Accessory Settings > Audio Device Settings, and set both the input and output to "TRITTON KUNAI Wireless Headset." You can see a visual confirmation that the microphone is functioning if the bar graph moves.

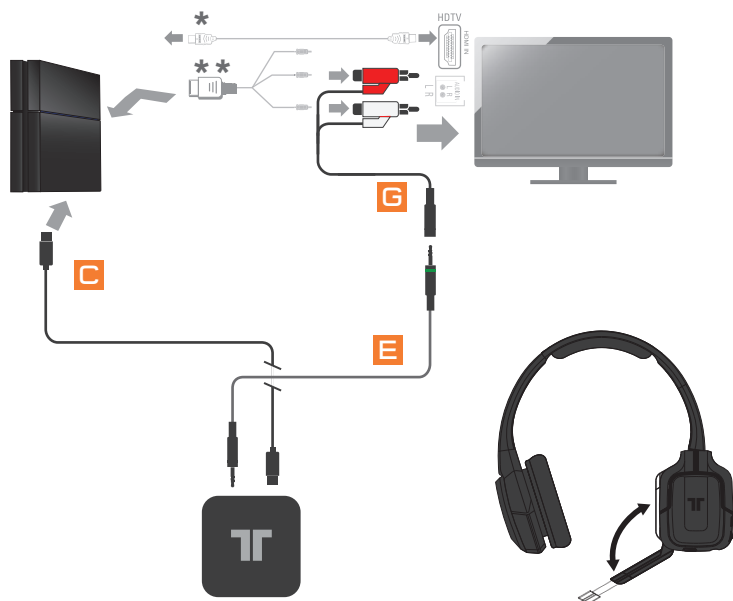
PlayStation®4 Connect to Controller



* Not Included / Non inclus
** Included with console /
Inclus avec la console

- 1 Plug one end of the 3.5mm Mobile/Wii U/PS4 cable **D** to the PS4 controller.
- 2 Plug the other end of the 3.5mm Mobile/Wii U/PS4 cable **D** to the port on the left earcup of the headset.

PlayStation®4 Back of TV




- 1** Plug one end of the USB Cable **C** into a USB port on the gaming console. Plug the other end of the USB Cable **C** into the USB Port of the Base Station.
- 2** Plug the Red/White connectors of the RCA Connector Cable **G** to the back of the TV.
- 3** Plug the 3.5mm Audio Cable **E** into the RCA Connector Cable.
- 4** Plug the other end of the 3.5mm Audio **E** Cable into the Base Station.

Wii U GamePad™/Mobile Devices



Plug one end of the 3.5mm Mobile/Wii U/PS4 cable  to the device.

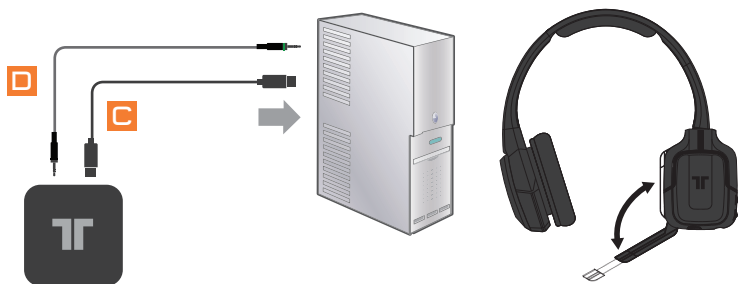
Plug the other end of the 3.5mm Mobile/Wii U/PS4 cable  to the port on the left earcup of the headset.

Sync Headset to Base Station

Note: Headset is synced to the Base Station at the factory. This step is only necessary when syncing a new Headset to the Base Station. Only one Headset can be paired at a time.

With the Base Station connected via USB and powered ON, on the Headset, press and hold the Power/Sync button for 3 seconds. The Headset and Base Station will sync, and the LEDs on the Base Station and Headset will illuminate solid when the sync is successful.

PC / Mac



- A** Plug one end of the 3.5mm Audio Cable **D** to the headphone jack of the PC/Mac.
- A** Plug the other end of the 3.5mm Audio Cable **D** to the Base Station.
- A** Plug one end of the USB Cable **C** into a USB port on the gaming console.
- A** Plug the other end of the USB Cable **C** into the USB Port of the Base Station.

For immediate support, visit [HTTP://SUPPORT.MADCATZ.COM](http://SUPPORT.MADCATZ.COM) to find the latest documentation, Knowledge Base articles, and software for your device. You can also chat live with a support technician or submit a trouble ticket.

2-Year Limited Warranty

Mad Catz warrants this product to be free from defects in materials and workmanship for the warranty period. This non-transferable, two (2) year limited warranty is only to you, the first end-user purchaser. If a defect covered by this warranty occurs AND you provide proof of purchase, Mad Catz, at its option, will repair or replace the product at no charge.

The Mad Catz two (2) year limited warranty is available to North American and European customers. Your sole and exclusive remedy is repair or replacement of your Mad Catz product. In no event shall Mad Catz liability exceed the original purchase price of the product. This warranty does not apply to: (a) normal wear and tear or abusive use; (b) industrial, professional or commercial use; (c) if the product has been tampered with or modified.

To receive warranty service, you must:

1. Obtain a Return Authorization Number from Mad Catz Technical Support via ONE of the following methods:

- a. Submit a Ticket at <http://support.madcatz.com>
- b. Call the Mad Catz Tech Support Center nearest you:

North America: (USA) or (outside USA)	1-800-659-2287 or 1-619-683-2815	Monday - Friday
UK (Toll-Free)	08450 508418	Monday - Friday
Europe (Outside UK)	+44(0) 1633 883110	Monday - Friday
Deutschland (gebührenfrei)	089-21094818	Montag - Freitag
France (gratuit)	01 82 88 01 80	Lundi - Vendredi
España (gratis)	93 181 63 94	Lunes - Viernes

Once you have your unique Return Authorization Number, do the following:

- 1. Ship the product to Mad Catz at your expense for service.
- 2. Enclose a copy of the original sales receipt showing a purchase date.
- 3. Enclose a full return address with daytime and evening phone numbers.

WWW.TRITTONAUDIO.COM

©2013 Mad Catz, Inc. 7480 Mission Valley Road, Suite 101, San Diego, CA 92108 U.S.A. Mad Catz, TRITTON, Kunai, and the Mad Catz and TRITTON logos are trademarks or registered trademarks of Mad Catz Interactive, Inc., its subsidiaries and affiliates. The shape and design of this product are a trade dress of Mad Catz Interactive, Inc., its subsidiaries and affiliates. All other product names and images are trademarks or registered trademarks of their respective owners. Made in China. All rights reserved. Product features, appearance and specifications may be subject to change without notice. Please retain this information for future reference.

Mad Catz is a publicly traded company on the TSX/NYSE MKT, symbol MCZ.

TRITON[®]



Addendum

EN

Warning: Changes or modifications not expressly approved by the party responsible for compliance could void the user's authority to operate the equipment.

NOTE: THE MANUFACTURER IS NOT RESPONSIBLE FOR ANY RADIO OR TV INTERFERENCE CAUSED BY UNAUTHORIZED MODIFICATIONS TO THIS EQUIPMENT. SUCH MODIFICATIONS COULD VOID THE USER'S AUTHORITY TO OPERATE THE EQUIPMENT.

This device complies with Part 15 of the FCC Rules. Operation is subject to the following two conditions: (1) this device may not cause harmful interference, and (2) this device must accept any interference received, including interference that may cause undesired operation.

This device complies with Industry Canada licence-exempt RSS standard(s). Operation is subject to the following two conditions: (1) this device may not cause interference, and (2) this device must accept any interference, including interference that may cause undesired operation of the device.



Warning

To prevent possible hearing damage, do not listen at high volume levels for long periods.

FR

Le présent appareil est conforme aux CNR d'Industrie Canada applicables aux appareils radio exempts de licence. L'exploitation est autorisée aux deux conditions suivantes : (1) l'appareil ne doit pas produire de brouillage, et (2) l'utilisateur de l'appareil doit accepter tout brouillage radioélectrique subi, même si le brouillage est susceptible d'en compromettre le fonctionnement.

FCC Addendum-R0
Size: 100 (W) x 100 (H)mm
Material: 128gsm Double Side Art Paper
Color: 1C + 0
Coating: Vernish
Date: 17-Oct-2013