



BARRYVOX®

BENUTZERHANDBUCH	DE
USER MANUAL	EN
MODE D'EMPLOI	FR
MANUALE	IT
MANUAL DEL USUARIO	ES
BRUKERHÅNDBOK	NO
ANVÄNDARHANDBOK	SV
NÁVOD K OBSLUZE	CS
NAVODILA ZA UPORABO	SL
INSTRUKCJA OBSŁUGI	PL
РУКОВОДСТВО ПО ЭКСПЛУАТАЦИИ	RU
取扱説明書	JA



WHEN TIME IS
YOUR ENEMY,
**FAST IS
YOUR FRIEND.**

EXTEND YOUR WARRANTY

www.Barryvox.com



BARRYVOX®

DE	BENUTZERHANDBUCH	4
EN	USER MANUAL	24
FR	MODE D'EMPLOI	44
IT	MANUALE	64
ES	MANUAL DEL USUARIO	84
NO	BRUKERHÅNDBOK	104
SV	ANVÄNDARHANDBOK	124
CS	ŇAVOD K OBSLUZE	144
SL	NAVODILA ZA UPORABO	162
PL	INSTRUKCJA OBSŁUGI	182
RU	РУКОВОДСТВО ПО ЭКСПЛУАТАЦИИ	202
JA	取扱説明書	222
	DECLARATIONS OF CONFORMITY	240

North America:

Mammut Sports Group Inc.
458 Hurricane Lane
Williston, US-VT05495
Phone +1 800 451 5127
info@mammutusa.com

Europe:

Mammut Sports Group GmbH
Mammut Basecamp 1
DE-87787 Wolfertschwenden
Phone +49 (0)8334 3620 0
germany@mammut.ch

Switzerland (Head Office):

Mammut Sports Group AG
Birren 5, CH-5703 Seon,
Phone +41 (0)62 769 81 81
info@mammut.ch

mammut.com

Congratulations on the purchase of your new Barryvox®.

This user manual explains the functionality and use of the Barryvox®. The Barryvox® is a revolutionary, sensor-controlled avalanche transceiver, which is very easy to use. Additional detailed information and advanced instruction may be found in the Barryvox® Extended Reference Guide.

Register your Barryvox® and get a 3 year warranty extension!

Register your Barryvox® today at www.Barryvox.com, to get important information such as announcements about the availability of software updates.

After a successful registration your device is covered for 5 years by warranty.

Barryvox® Transceivers – Made in Switzerland

Our heritage is compelling. Mammut and Barryvox® follow the time-honored tradition of world-class precision products made in Switzerland. From its design to its engineering and production, this device is completely made in Switzerland.

This device is compatible with all avalanche transceivers that comply with the EN 300718 standard and operate on a frequency of 457 kHz.

The following documents for the Barryvox® transceivers are available at www.mammut.ch/BarryvoxManual:

Barryvox® User Manual

This user manual describes the SEND and group check functions as well as the standard search mode. In addition, you will find all information regarding basic maintenance, warranty and repair as well as the technical specifications.

Barryvox® Extended Reference Guide

The Extended Reference Guide is a comprehensive resource of information for your Barryvox®. It includes additional information that augments the user manual concerning rescue techniques, and in particular the alternate search mode. It is an important and valuable resource for all educators.

Approval / Conformity

All information concerning approval and conformity is available at the very end of this booklet.

BARRYVOX®

USER MANUAL

EN

HANDLING THE BARRYVOX®	26
INITIAL SETUP	27
COCKPIT – OVERVIEW OF FUNCTIONS	32
GROUP CHECK	34
SEND	36
SEARCH	37
EXCAVATING THE BURIED SUBJECT	40
ADDITIONAL INFORMATION	41
DECLARATIONS OF CONFORMITY	238

HANDLING THE BARRYVOX®

EN

Like all transceivers, the Barryvox® contains shock sensitive ferrite antennas. Therefore, you should handle it with utmost care!

Store the device and the carrying system in a dry spot that is protected from extreme cold or heat and direct sunshine.

Always check the result of the self- and battery test, pay attention to alert messages and carry out the group check.

It is your responsibility to frequently check your Barryvox® for mechanical damage of the casing, proper function of the main switch, battery compartment cover as well as cleanliness and mechanical integrity of the battery contacts.

To ensure the proper performance of the transceiver, it is highly recommended that you send your device to an official Barryvox® service center once every three years for a functional test. The recommended date of the next check can be viewed under «Maintenance» in the shut down sequence of the device. (see chapter «Periodic Checks» of the Barryvox® Extended Reference Manual).

Interferences

Always avoid having other electronic devices (e.g. mobile phones, radios, headlamps, cameras), metal objects (pocket knives, magnetic buttons), or other transceivers close to (20 cm in SEND; 50 cm in SEARCH) your running avalanche transceiver.

You should not wear clothing with magnetic buttons! Users of pacemakers are advised to carry the device in a secure pants pocket. Consult the manufacturer's instructions with regard to the impact on pacemakers.

When searching, hold the device at a minimum of 50cm away from these objects and turn off any electronic devices, if possible. It is highly recommended to turn OFF mobile phones!

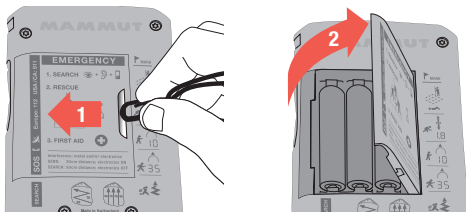
INITIAL SETUP

Batteries

Only use alkaline (LR03/AAA) batteries of the same type.

Always insert 3 new batteries of the same type. In case these batteries need to be removed, the same 3 batteries or 3 new batteries must be reinserted. Never use rechargeable batteries and always replace all the batteries at the same time.

Make sure the lid is properly closed and that the device and the batteries stay dry



Use a fingernail or the leash clip to slide battery door to the left, and it will swing open.

Periodically inspect the battery compartment. Clean or dry it, if needed, since moisture can cause corrosion.

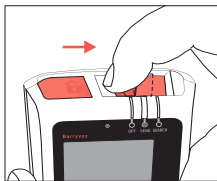
Avoid touching the contacts with your hands, use a clean cloth. A reliable power supply is crucial for safe operation.

When storing or not using the transceiver for an extended period of time (summer, travelling, shipping), remove alkaline batteries and leave the battery compartment open. The warranty becomes void if batteries have leaked!

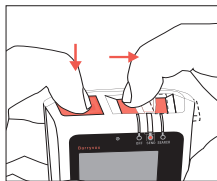
Main Switch OFF / SEND / SEARCH

The main switch is located on the top side of the device. In the left position OFF, the device is turned off, in the center position SEND the device is in SEND mode and in the right position SEARCH, the device is in SEARCH mode. For safety reasons, it is required to press the hinged unlock button to leave the SEND mode. To return from SEARCH to SEND, simply push the main switch sideways.

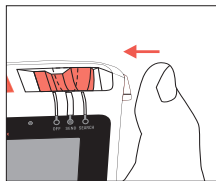
Always make sure that the switch locks into position mechanically to avoid an undesired change of mode.



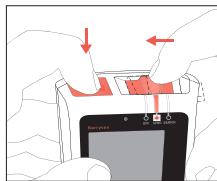
OFF -> SEND



SEND -> SEARCH



SEARCH -> SEND



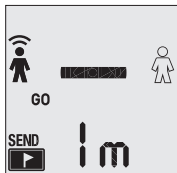
SEND -> OFF

User Interface and Use of Buttons

The use of the Barryvox® is easy and straightforward. All user interaction is done with the  button on the front side. To confirm your selection, use the orange  button. The action triggered by pressing the  button is shown at the bottom left of the screen.

Samples:

Press the  button to...
...activate group check.



Start-Up / Self- and Battery Test

While starting, the device conducts a self test. The result of the self-test is shown the first time the device enters a SEND mode.

If the battery power falls below 20% or the battery icon is displayed, the batteries must be replaced as soon as possible!

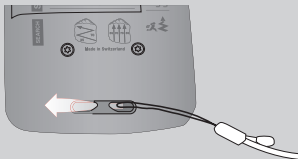
The meanings of the different alert messages are described in detail in the Barryvox® Extended Reference Guide.

Carrying Positions

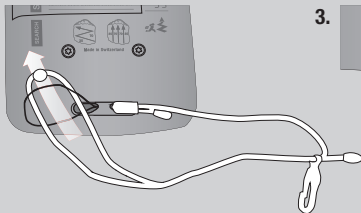
Adjust the BarryMount to fit your body. Regardless of the carrying position, the display should always face your body!

BarryLeash

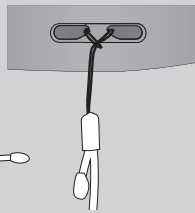
1.



2.



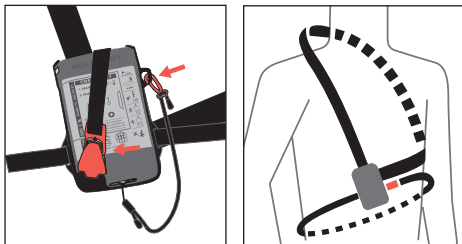
3.



Attach the BarryLeash to the bottom of the device.

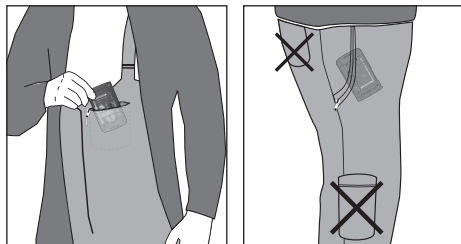
BarryMount (Recommended Carrying Position)

The BarryMount should be put on over your innermost layer of clothing prior to beginning the trip (see illustration) and must be worn on your body for the duration of the trip. The transceiver must always remain covered by one layer of clothing. The device itself is inserted into the BarryMount according to the illustration. It should always remain attached to the holster using the clip of the BarryLeash.



Carrying the Transceiver in a Pocket

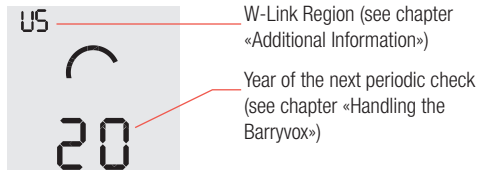
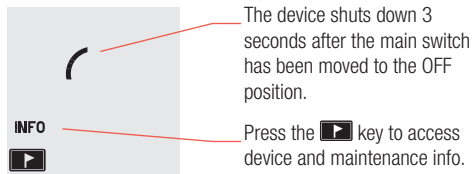
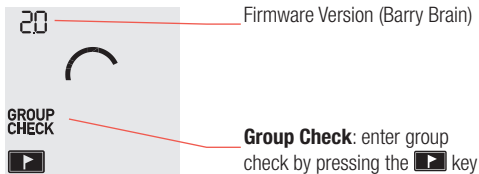
If you carry the Barryvox® in a pants pocket, the zipper must remain closed for the duration of the trip. Always use a secured pocket (see illustration). The wrist loop should be secured to your pants or around your belt.



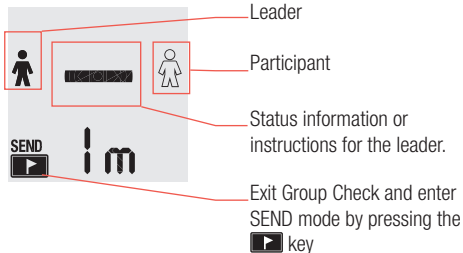
COCKPIT – OVERVIEW OF FUNCTIONS

Turning the Device ON and OFF

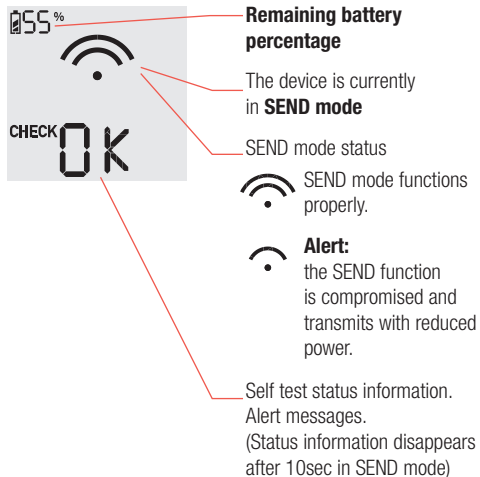
EN



Group Check

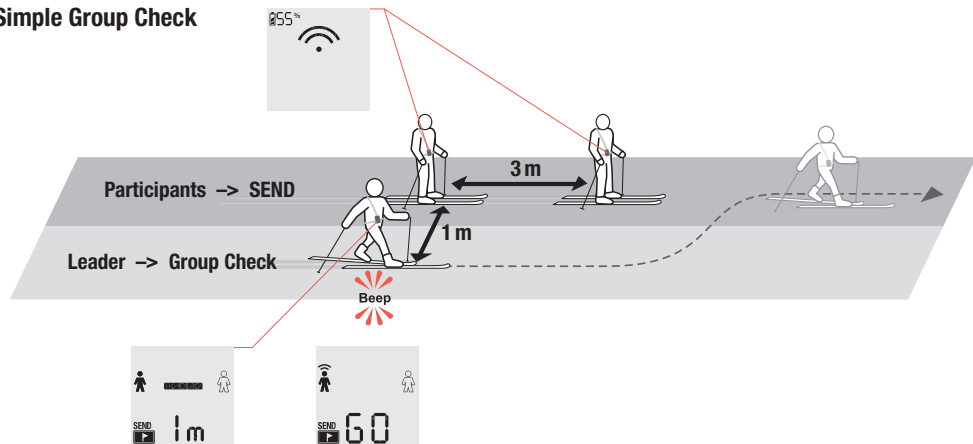


SEND




GROUP CHECK

Simple Group Check

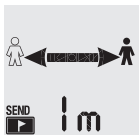


Before a party takes off, the transceivers of all party members must be checked. The participants switch their device to SEND mode.

The group leader activates the group check by switching their device from OFF to SEND and presses the  button within the first seconds.



The test is successful if you can clearly hear beep sounds from each participant's transceiver within the range indicated on the display.



The members of the party must be spread out appropriately to avoid mutual interference. The indicated test distance must not be shortened, or the group check becomes very unreliable.

EN

Once all the participant's devices are tested, the group check is concluded. The group leader's transceiver must be switched to the SEND mode.

If no tone is heard within the indicated range, the device must not be used.

- Further procedure:
1. Check if the device is switched to SEND.
 2. Replace the batteries.
 3. Have the device checked by the manufacturer.

Chapter «Maintenance and Repair» in the Barryvox® Extended Reference Guide).



If your Barryvox® detects that the transmit frequency of the tested device is out of tolerance, a warning message will be shown. In this case, repeat the test with 5m distance between the participants to identify the defective transmitter. Such devices must be checked by the manufacturer.

SEND

The SEND mode is the normal operating mode outdoors or in all other situations in which there is a risk of avalanches.

EN



Each time the SEND mode is activated, this is confirmed by an ascending triple beep sound. Each individual signal pulse is tested. If the test is successful, this is confirmed by a blink of the red SEND-Control LED.



If the device detects that the SEND function is compromised, the red SEND-Control LED stops flashing and screen shows an alert message.

To save battery power, the LCD screen is automatically deactivated in the SEND mode, but can be activated any time by pressing any button.

SEARCH

Be aware that electronic devices including mobile phones used by other rescuers may disturb the search. Therefore it is highly recommended to switch off phones which are not absolutely required!

1 Signal Search



- ▶ **BarryTip: Move swiftly.**
- ▶ Emergency plan, search strategies and search strip widths: please see back side of device.
- ▶ Search avalanche surface systematically.
- ▶ During signal search, the rescuer has their visual focus on the surface of the debris in order to look for visual clues on the snow surface. The first signal is indicated by a distinct double beep sound.



2 Coarse Search



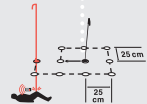
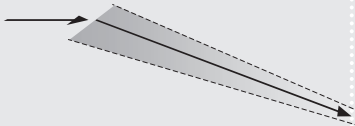
- ▶ **BarryTip: Move swiftly, move in the direction of the arrow.**
- ▶ Hold the transceiver with the extended arm horizontally in front of you.
- ▶ If the distance increases, then you are moving away from the victim. Continue the search in the opposite direction.



Distance below 10

- ▶ **BarryTip: Reduce search speed, precisely follow the arrow.**



1**SIGNAL SEARCH****2****COARSE SEARCH****>10****3****FINE SEARCH****4****PINPOINTING**

EN

3 Fine Search



- ▶ **BarryTip:** Follow the arrow! Step slowly forward and backwards until you have found the point of lowest distance indication. Hold the device at knee height.




4 Pinpointing



- ▶ **BarryTip:** Place a visual indicator at the point where you have found the lowest distance indication. The visual reference is important to probe in a systematic pattern.
- ▶ If the buried subject is hit with the probe, leave the probe in the snow.



Mark the buried subject as «found» by pushing the  button after you have successfully located it with a probe strike!

Multiple Burials



The marking feature allows to continue the search for further buried subjects by marking the previously located ones as found. Excavate the buried subjects already found while the search continues, unless the burial depth is particularly deep. (See chapter «Multiple Burials» in the Barryvox® Extended Reference Guide).

Automatic Revert to SEND

For the safety of the rescuers, the device automatically switches into SEND mode after 4 minutes without user interaction or motion.

Leaving SEARCH Mode



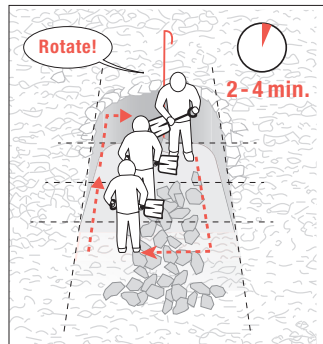
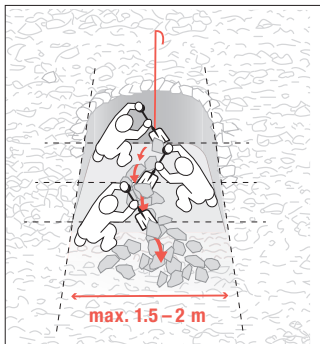
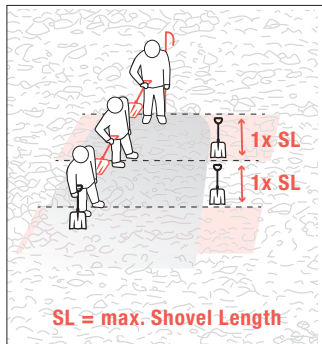
After 4 seconds the device automatically switches into SEND mode.

EXCAVATING THE BURIED SUBJECT

The first rescuer positions him/herself directly at the probe. All additional rescuers position themselves one shovel length from each other in the direction of snow removal, thus typically in the fall line.

The rescuer at the tip of the conveyor belt digs directly following the probe to the buried subject, thus avoiding any chance to miss it

BarryTip: in hard snow, cut blocks with the shovel. In case of multiple burials, switch off the transceiver of the buried subject as soon as possible.



ADDITIONAL INFORMATION

W-Link Regions

- ▶ **EU** Europe and neighboring countries (W-Link Region A) [= light grey]
- ▶ **US** US, Canadian, New Zealand and Australian Version (W-Link Region B) [= dark grey]
- ▶ **no** Countries without W-Link [= black]
- ▶ **Countries with unknown region allocation** [= white]

Frequency regulations do not allow that the user modifies the frequency setting. To enable the user to take his Barryvox® with him when travelling into another region, it is possible to switch the W-Link off and on again when returning home

Please note that the W-Link setting has no effect on the signal which is used to locate a buried subject.



EN

W-Links settings may only be modified by an official Barryvox® Service Center.

Warranty

There is a 2 year warranty on the Barryvox® transceiver (excluding the batteries, the carrying system and the leash) from the date of purchase shown on the purchase receipt.

If you register your device on www.Barryvox.com by completely filling in the required information, the existing warranty duration, starting from the date of purchase shown on the purchase receipt, will be prolonged by an additional 3 years of warranty.

In case of a warranty claim, all parts that can be shown to have material or production defects will be replaced free of charge. Damage that can be traced to incorrect handling or normal wear and tear is excluded.

The warranty is voided if the buyer or any non-authorized third party opens the device. This is also the case for devices that have been used with spare parts or accessories which are not original and are not recommended by the manufacturer.

A fee will be charged for the diagnostic test of a transceiver not needing any repair. Warranty repairs do not extend the duration of the warranty. There is a six month warranty on replaced spare parts. Warranty repairs will only be conducted if the device is sent in along with the receipt.

The owner will be charged for the shipping. No other warranty shall exist. Any liability for any kind of loss or damage including but not limited to any direct, indirect or consequential damage is explicitly excluded.

Technical Data

Device: Digital-analog device with 3 antennas.

Transmit frequency: 457 kHz (International Standard).

Power supply: 3 x LR03 1.5 V Alkaline (AAA).

Battery life with alkaline:

typical 300 h SEND, min 200 h in SEND mode followed by 1 h in SEARCH mode.

Maximum range: up to 70 m in standard search mode.

Search strip width: 70 m in standard search mode

Operating temperature range: -25° to +45° C.

Dimensions (L x W x H): 115 x 67 x 27 mm.

Weight: 210 g (incl. batteries).

All information is provided without liability. Status July 2017.
Technical data and specifications are subject to change without notice

Disposal Information

At the end of its lifetime, this product may not be disposed with regular waste. It must be recycled by a specialized facility for recycling electronic devices.



EN

© Copyright by Mammut Sports Group AG

All rights reserved. Text, text excerpts, images and diagrams are all subject to copyright. No part may be reproduced or copied without written permission from the publisher. For further use and publications for educational purposes, please contact Mammut Sports Group AG. Mammut and Barryvox® are registered trademarks of the Mammut Sports Group AG. All rights reserved.

Suisse (Siège principal):
Mammut Sports Group AG
Birren 5, CH-5703 Seon
Tél. +41 (0)62 769 81 81
info@mammut.ch

France:
SAD Sports Alpins, Distribution S.A.S.
1051 av. André Lasquin
FR - 74700 Sallanches
Tél. +33 4 50 58 45 82
contact@sad-chamonix.fr

Europe:
Mammut Sports Group GmbH
Mammut Basecamp 1
DE-87787 Wolfertschwenden
Tél. +49 (0)8334 3620 0
germany@mammut.ch

mammut.com

Félicitations pour l'achat de votre nouveau Barryvox®

Le présent manuel vous familiarise avec les fonctions et l'utilisation du Barryvox®.

Le Barryvox® est un détecteur de victimes d'avalanches (DVA) révolutionnaire commandé par capteur, très simple à utiliser et dont vous comprendrez très vite le fonctionnement.

Enregistrez votre Barryvox® et bénéficiez ainsi d'une prolongation de garantie de 3 ans!

Enregistrez votre Barryvox® aujourd'hui encore à l'adresse www.Barryvox.com afin d'obtenir d'importantes informations sur les mises à jour du logiciel.

Après l'enregistrement de votre appareil, il bénéficiera d'une nouvelle durée de garantie de 5 ans.

Détecteurs de victimes d'avalanche Barryvox® – Made in Switzerland

Notre origine oblige. Depuis 40 ans, Mammut et Barryvox® sont garants d'une tradition de produits de haute qualité «Made in Switzerland». De la première esquisse du designer en passant par le développement jusqu'à la production, toutes les prestations ont été réalisées entièrement en Suisse.

Cet appareil est compatible avec tous les DVA qui satisfont à la norme EN 300718 et qui fonctionnent par conséquent sur la fréquence de 457 kHz.

Les documents suivants pour le Barryvox® S sont disponibles à l'adresse www.mammut.ch/Barryvox-Manual:

Barryvox® Mode d'emploi

Le mode d'emploi décrit les fonctions SEND et de test de groupe, ainsi que le mode de recherche standard. Le mode d'emploi vous fournit en outre toutes les informations relatives à l'entretien, à la garantie et aux spécifications techniques.

Barryvox® Manuel de référence

Le manuel de référence est un guide complet. Il contient des informations complémentaires à celles du mode d'emploi qui concernent les réglages de l'appareil et les techniques de recherche et de sauvetage. Le manuel de référence est une aide importante et précieuse qui assiste les formateurs.

Homologations / Conformité

Toutes les informations relatives à l'homologation et à la conformité figurent à la fin du présent mode d'emploi.

BARRYVOX®

MODE D'EMPLOI

PRISE EN MAIN DE VOTRE BARRYVOX® . . .	46
MISE EN SERVICE	47
APERÇU DE LA FONCTION COCKPIT	52
TEST DE GROUPE	54
SEND	56
SEARCH	57
DÉGAGER LA VICTIME	60
INFORMATIONS COMPLÉMENTAIRES	61
DÉCLARATIONS DE CONFORMITÉ (ANGLAIS) .	238

FR

Comme tout DVA, le Barryvox® contient aussi des antennes de ferrite sensibles aux chocs. Manipulez donc votre appareil avec les plus grandes précautions! Conservez l'appareil et le système de fixation à un emplacement sec, protégé des températures extrêmes – basses et élevées – et à l'abri des rayons directs du soleil. Veuillez toujours observer le résultat de l'autotest de l'appareil et du test des piles, ainsi que d'éventuels messages d'erreur, et effectuez le test de groupe.

Nous vous recommandons en outre de vérifier votre Barryvox® régulièrement et sous votre responsabilité, notamment les dégâts mécaniques du boîtier, le fonctionnement correct de l'interrupteur principal et du couvercle du logement des piles, ainsi que la propreté et l'absence de corrosion des contacts des piles.

Il est vivement recommandé de faire vérifier le fonctionnement de l'appareil tous les 3 ans. A cet effet, envoyez votre appareil à un point service officiel Barryvox®. La date du prochain contrôle peut être affichée sous «Entretien» lors de l'arrêt de l'appareil. (Chapitre «Contrôle périodique par un point service Barryvox» dans le manuel de référence Barryvox®.)

Perturbations

Évitez la présence d'appareils électroniques (par ex. téléphones mobiles, appareils radio, lampes frontales, app. photo), d'objets métalliques (par ex. couteau de poche, boutons magnétiques) ou un autre DVA à proximité immédiate d'un DVA enclenché (20 cm en mode SEND, 50 cm en mode SEARCH).

Ne portez pas de vêtements avec des boutons magnétiques!

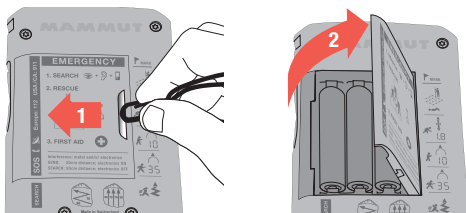
Aux porteurs de stimulateurs cardiaques, il est recommandé de porter le DVA dans une poche de pantalon sécurisée. Concernant les perturbations possibles du stimulateur cardiaque, référez-vous aux directives de son fabricant.

Au cours de la recherche, votre appareil doit être éloigné d'au moins 50 cm de tels objets. Il est instamment recommandé d'éteindre les appareils électroniques dont l'usage n'est pas impératif, notamment les téléphones mobiles!

MISE EN SERVICE

Piles

Utilisez exclusivement des piles alcalines (LR03/AAA). Il faut toujours installer 3 nouvelles piles du même type. Si ces piles sont retirées, il faut réintroduire les 3 mêmes piles ou 3 piles neuves. N'utilisez en aucun cas des piles rechargeables et remplacez toujours toutes les piles en même temps. Veillez à ce que le couvercle soit correctement encliqueté et que les piles et l'appareil restent secs.



Utilisez un ongle ou le crochet de la dragonne pour pousser le couvercle du compartiment des piles vers la gauche, et ainsi l'ouvrir.

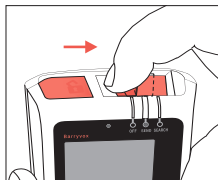
Vérifiez périodiquement le compartiment des piles et nettoyez-le, resp. séchez-le si nécessaire. En effet, de l'humidité dans le compartiment des piles peut occasionner de la corrosion. Ne pas toucher les contacts avec les doigts. Pour le nettoyage, utilisez un chiffon non pelucheux. Une alimentation fiable en énergie est essentielle pour la sécurité d'utilisation.

Lors du stockage ou pendant les périodes où vous n'utilisez pas votre Barryvox (en été, en voyage, pour l'envoi), retirez les piles alcalines de l'appareil. Aucune garantie n'est accordée aux appareils dont les piles ont coulé!

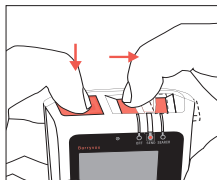
Interrupteur principal OFF / SEND / SEARCH

L'interrupteur principal se trouve sur la face supérieure de l'appareil. En position gauche OFF l'appareil est déclenché, en position médiane SEND l'appareil est en mode d'émission et en position droite SEARCH le mode de recherche est activé. Pour quitter la position SEND, il faut en plus presser le bouton de déverrouillage pour des raisons de sécurité. Par une pression latérale sur l'interrupteur coulissant on peut revenir en tout temps de SEARCH à SEND.

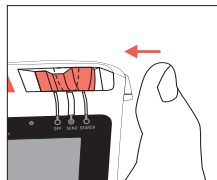
Assurez-vous chaque fois que l'interrupteur s'encliquette mécaniquement, afin d'éviter toute modification involontaire de l'état de l'appareil.



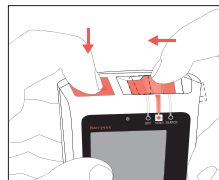
OFF → SEND



SEND → SEARCH





SEARCH → SEND




SEND → OFF

Concept de commande et usage des touches

Le Barryvox® se distingue par son fonctionnement simple et convivial. La commande s'effectue par une touche. Pour confirmer votre choix, utilisez la touche sur la face avant qui est marquée du symbole . La fonction de cette touche contextuelle est signalée par le symbole  dans les menus, ou est affichée dans la touche logicielle au bord inférieur de l'écran.

Exemple:

Pressez la touche  pour...
...activer le test de groupe

