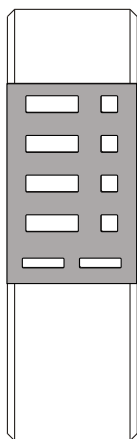


OWNERS MANUAL

Congratulations on your purchase of a UPM slim remote control transmitter. **This unit is specifically designed to work with UPM brand receivers.** Please take the time to read and understand this manual so you can begin to enjoy the convenience this product can offer.

FEATURES

- 433 MHz RF technology
- Intelligent code learning
- Control up to 4 remote receivers
- Ultra-slim design with flush wall-mount bracket
- Master On/Off
- Transmission range of up to 40 meters in open area

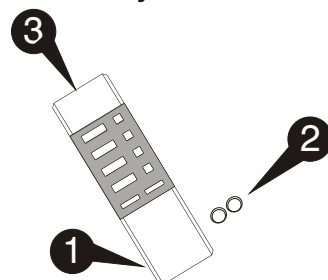


TR430 Transmitter

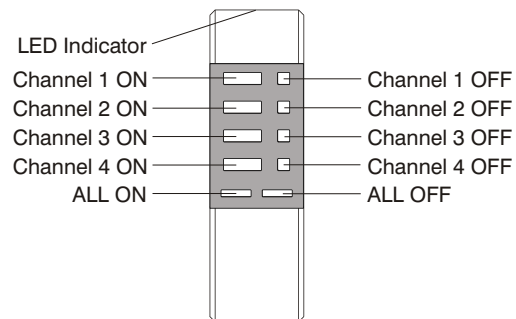
GETTING STARTED

- 1 remove the battery cover from the back of the transmitter
- 2 place two button cell batteries between terminals observing proper polarity then replace cover
- 3 the green LED will light up with any key press once the battery is installed correctly

battery installation



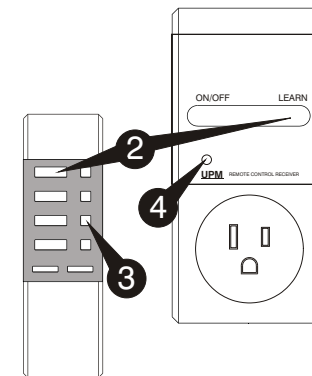
button descriptions



LEARN FUNCTION

The learn function must be performed to allow the receivers in your system to recognize the transmitter. More than 4,000 code combinations eliminate the possibility of interference by other transmitters.

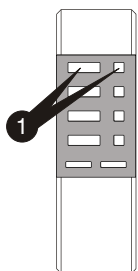
- 1 Plug receiver into wall socket
- 2 Press LEARN on receiver while simultaneously pressing the desired channel button on the transmitter
- 3 Repeat 1 and 2 for any additional receivers (available at your local retailer) using available channels
- 4 If LEARN completed successfully, the LED on the receiver should light up when ON is pressed



- * Note that a generic model of receiver is used for illustration here. Please refer to the accompanying owners manual for the operations of your specific receiver.

ON/OFF FUNCTION

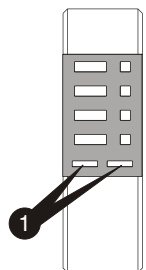
- 1 Turn each receiver On/Off individually by using the channel On/Off keys on the transmitter



MASTER ON/OFF

If you have more than one receiver set up, you can use the Master On/Off function to simultaneously turn ALL the receivers (of the same house code) On and Off at the same time.

- 1 Turn all receivers On or Off at the same time by using the ALL ON / ALL OFF button



TROUBLESHOOTING

problem

Transmitter stops turning receiver on and off.

solution

Use the LEARN function to reprogram the receiver or
Check the battery

TECHNICAL SPECIFICATIONS

Battery Type: 2 x 1.5V button cell
System Source: 4,096 code combinations
Transmission Frequency: 433 MHz
Transmission Range: up to 40 meters in open area

NOTICE

This equipment has been tested and found to comply with the limits for a Class B digital device, pursuant to Part 15 of the FCC Rules. These limits are designed to provide reasonable protection against harmful interference in a residential installation. This equipment generates, uses and can radiate radio frequency energy and, if not installed and used in accordance with the instructions, may cause harmful interference to radio communications. However, there is no guarantee that interference will not occur in a particular installation. If this equipment does cause harmful interference to radio or television reception, which can be determined by turning the equipment off and on, the user is encouraged to try to correct the interference by one or more of the following measures:

- Reorient or relocate the receiving antenna.
- Increase the separation between the equipment and receiver.
- Connect the equipment into an outlet on a circuit different from that to which the receiver is connected.
- Consult the dealer or an experienced radio/TV technician for help.

Warning:

Changes or modifications made to this equipment not expressly approved by the manufacturer may void the FCC authorization to operate this equipment.