

EOC-5610 is a long range outdoor wireless Access Point / Client Bridge that operates in both **5GHz and 2.4GHz** frequency. It provides high bandwidth up to 108Mbps with Super Mode (SuperA/G) and features high transmitted output power as well as superior sensitivity. EOC-5610 extends radio coverage, avoids unnecessary roaming between Access Points and ensures a stable wireless connection while reduces the number of required equipments.

EOC-5610 provides user friendly interface including user friendly distance control ranges from 1KM up to 30KM and RSSI LED indicator offering real time signal status. It comes with PoE injector for convenient outdoor installation.



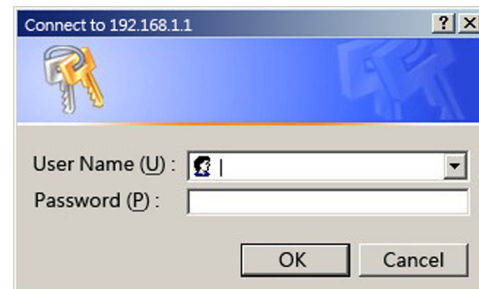
IP Address Configuration

The default IP address of the device is **192.168.1.1**. In order to log into this device, you must first configure the TCP/IP settings of your PC/Notebook.

1. In the control panel, double click Network Connections and then double click on the connection of your Network Interface Card (NIC). You will then see the following screen.
2. Select **Internet Protocol (TCP/IP)** and then click on the **Properties** button. This will allow you to configure the TCP/IP settings of your PC/Notebook.
3. Select **Use the following IP Address** radio button and then enter the IP address (192.168.1.21) and subnet mask (255.255.255.0). Ensure that the IP address and subnet mask are on the same subnet as the device.
4. Click on the **OK** button to close this window, and once again to close LAN properties window.

Logging In

1. To configure the device through the web-browser, enter the IP address of the Bridge (**default: 192.168.1.1**) into the address bar of the web-browser and press **Enter**.
2. After connecting to the IP address, the web-browser will display the login page. Specify **admin** as the default **User Name** and **Password**, and then click on the **Login** button.



Administration

1. Click on the **Administration** link under the **Management section**. This option allows you to modify for a new user name and password on the device. For security it is highly recommended for security reasons.
2. **Name:** Specify a user name into the first field.
3. **Password:** Specify a password into this field and then re-type the password into the **Confirm Password** field. Then click on the **Apply** button.
4. Click on the **Apply** button to save the changes.

System Properties

1. Click on the **System Properties** link on the **System section**. This feature allows you to configure the device as an Access Point or Repeater.
2. **Device Name:** Specify a name for the device – this is not the SSID.
3. **Country/Region:** Select the region from the drop-down list.
4. **Operation Mode:** Select **Access Point, Client Bridge or Client Router** radio button.

5. Click on the **Apply** button to save the changes.

IP Settings

1. Click on the **IP Settings** link on the **System section**. This feature allows you to configure the LAN interface using a static IP address or as a DHCP client. This IP address is also used to access the web-based interface.
2. **IP Network Setting:** Select **Obtain an IP address automatically (DHCP)** radio button if the Access Point is connected to a DHCP server. This will allow the Access Point to pass IP addresses to the clients associated with it.

WARNING:

If device failed to obtain valid IP from a DHCP server, the device will be inaccessible. To access the device you will have press reset button for 5 seconds to restore IP settings back to **192.168.1.1**.

You may select **Specify an IP Address** radio button if you would like the device to use a static IP address. In this case, you would be required to specify an IP address, subnet mask, and default gateway IP address.

3. **IP Address:** Specify an IP address
4. **IP Subnet Mask:** Specify the subnet mask for the IP address
5. **Default Gateway:** Specify the IP address of the default gateway.
6. Click on the **Apply** button to save the changes.

Note: If you change the IP address here, you may need to adjust your PC's network settings to access the network again.

Wireless Network & Security

1. Click on the **Wireless Network** link on the **Wireless section**. This feature allows you to configure the wireless mode, channel, SSID, and security settings.
2. **Wireless Mode:** Depending on the type of wireless clients that are connected to the network, you may select **A, B, G, or B/G-mixed, Turbo Mode**.
3. **Channel:** Select a channel from the drop-down list. The channels available are based on the country's regulation.

4. You may configure up to four different wireless profiles. Click on the **Edit** button to modify the profile and place a check in the Enable box to activate the profile.
5. **SSID:** The SSID is a unique named shared amongst all the points of the wireless network. The SSID must be identical on all points of the wireless network and cannot exceed 32 characters.
6. **Suppressed SSID:** Place a check in this box if you would like to hide the SSID. By enabling this feature, wireless clients will not be able to scan this access point in a site survey.
7. **Station Separator:** This is also known as layer 2 isolation. Clients connected to this Access Point will not be able to directly communicate with each other.
8. **Security Mode:** By default, the security is disabled. Refer to the user's Manual to configure the security features such as WEP, WPA, WPA-PSK, WPA2, WPA2-PSK and WPA-Mixed.
9. Click on the **Apply** button to save the changes