

My Book[®]

Studio Edition™ II

User Manual

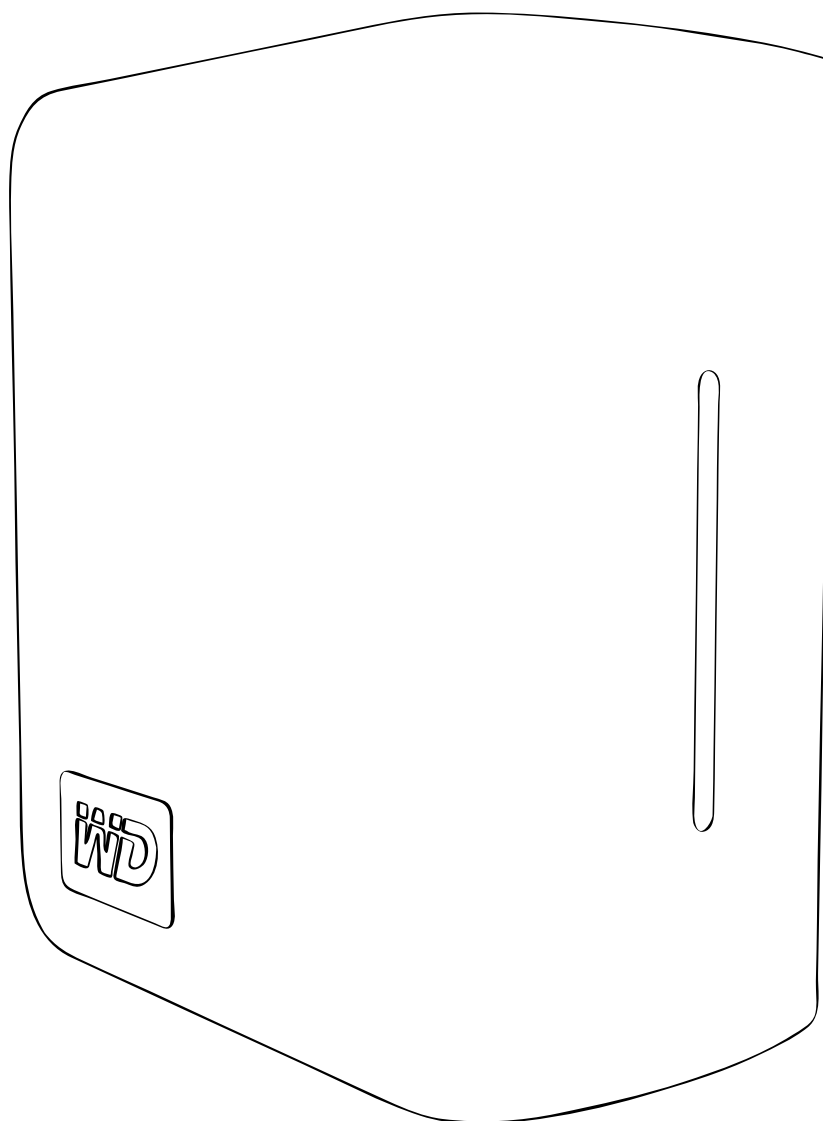


Table of Contents

1	Getting Started	1
	Kit Contents	1
	Optional Accessories	1
	Compatibility	2
	Recording Your WD Product Information	2
	Registering Your WD Product	2
	Precautions	3
2	About Your WD Drive	4
	Format and Configuration	4
	LED Indicators (Lights)	4
	Power/Activity LED Behavior	4
	Capacity Gauge	4
	Interfaces	5
	Kensington Security Slot	5
	Software	6
3	Setting Up	7
	Macintosh	7
	Windows	10
4	WD Drive Manager Status	15
	WD Drive Manager Status Messages	15
5	WD RAID Manager for Mac	16
	Configuring RAID	16
	RAID Troubleshooting	18
6	WD RAID Manager for Windows	21
	Configuring RAID	21
	RAID Troubleshooting	22
7	Turning Off/Disconnecting the Device	25
	Auto-off	25
	Safe Shutdown [™]	25

	Safe Removal.....	25
	Unplugging the Device	25
<hr/>		
8	Replacing a Drive	26
<hr/>		
9	Troubleshooting	29
<hr/>		
10	Appendix.....	30
	Regulatory Compliance.....	30
	Warranty Information.....	30
	WD Service and Support.....	32
<hr/>		
	Index	33

1

Getting Started

Thank you for purchasing My Book® Studio Edition™ II, the storage solution of choice for creative professionals, workgroups, small offices, and anyone looking for extra assurance of data safety. This user manual provides step-by-step installation instructions and other important information regarding your WD product. For the latest WD product information and news, visit our website at www.westerndigital.com.

Kit Contents

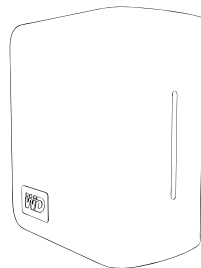
- Dual-drive storage system
- USB cable
- FireWire® 800 cable (9-pin to 9-pin)
- FireWire 800 to 400 cable (9-pin to 6-pin)
- AC adapter*
- Quick Install Guide
- Software CD



Software CD



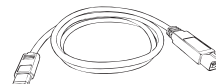
Quick Install Guide



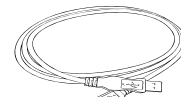
My Book Studio Edition II



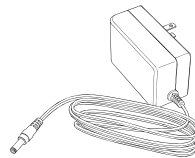
FireWire 800 cable



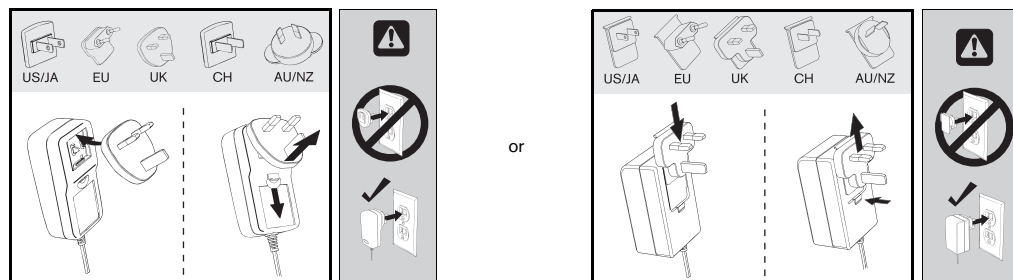
FireWire 800 to 400 cable



USB cable



AC adapter (U.S.-only)*



Global AC adapter configurations*

*This product may ship with a different AC adapter configuration, depending on your region.

Optional Accessories

For more information on optional accessories for this product, visit store.westerndigital.com (U.S. only). Outside the U.S., visit support.wdc.com.

Compatibility

Macintosh

- Any of the following:
 - USB port
 - FireWire 800 or 400 port
 - eSATA port or eSATA adapter card*
- Mac® OS X 10.4.10+
- Mac OS X 10.5.2+

Windows®

- Any of the following:
 - USB port
 - FireWire 800 or 400 port
 - eSATA port or eSATA adapter card*
- Windows 2000/XP/Vista

Note: Compatibility may vary depending on user's hardware configuration and operating system.

* For a list of compatible eSATA cards, search our knowledge base at support.wdc.com for answer ID# 1524.

Important: For highest performance and reliability, it is recommended that you install the latest updates and service pack (SP). For Macintosh, go to the **Apple** menu and select **Software Update**. For Windows, go to the **Start** menu and select **Windows Update**.

Recording Your WD Product Information

In the following table, write the serial number and model number of your new WD product found on the label on the bottom of the device. Also, write the purchase date and other notes such as your operating system and version. This information is necessary for setup and technical support.

Serial Number:
Model Number:
Purchase Date:
System and Software Notes:

Registering Your WD Product

Your WD product includes 30 days of free technical support during the applicable warranty period for your product. The 30-day period commences on the date of your first telephone contact with WD technical support. Register online at register.wdc.com.

Precautions

WD products are precision instruments and must be handled with care during unpacking and installation. Drives may be damaged by rough handling, shock, or vibration. Be aware of the following precautions when unpacking and installing your external storage product:

- Do not operate this device outside the temperature range of 5°C–35°C (41°F–95°F)
- Do not drop or jolt the device.
- Do not move the device during activity.
- Do not use My Book as a portable device.
- To avoid overheating, do not block air slots on the underside, top, or rear of the enclosure. Do not stack any objects on top of the device that may block ventilation.

2

About Your WD Drive

Format and Configuration

This WD device is preformatted to HFS+ (Journaled) for compatibility with Macintosh operating systems and is pre-configured for RAID 0 (Striped) mode for maximum capacity and accelerated performance.

This product also supports RAID 1 (Mirrored) mode for extra data protection with instantaneous and automatic data updates. If one drive fails the system will still run and your data will be preserved. You can replace the failed drive and restore the system. For more information, including instructions on changing the RAID configuration or drive format, see “WD RAID Manager for Mac” on page 16 or “WD RAID Manager for Windows” on page 21.

LED Indicators (Lights)

The Power/Activity and Capacity Gauge indicators are represented by a single bar of six LEDs (lights) on the front panel of the drive.

Power/Activity LED Behavior

Appearance	Drive State
Steady	Power-on state or power-save mode
Slow flashing (every four seconds)	System standby
Moving up and down	Drive in use
Alternating checkerboard pattern	Transitioning from one state to another
Alternate flashing between top and bottom LEDs	RAID degraded mode
Cycling from bottom to top	RAID rebuild mode
Fast flashing (every second)	Over-temperature condition*

* If this condition occurs, read/write activity will stop and the drive will spin down. Disconnect and power down My Book. Allow it to cool down for 1-2 hours then reconnect and power up the device.

Capacity Gauge

When the device is turned on, the Capacity Gauge indicates space used on the drive by illuminating six sections in an upward vertical direction. Each section represents approximately 17 percent of drive capacity. Because this drive is preformatted, the first section is illuminated upon installation.

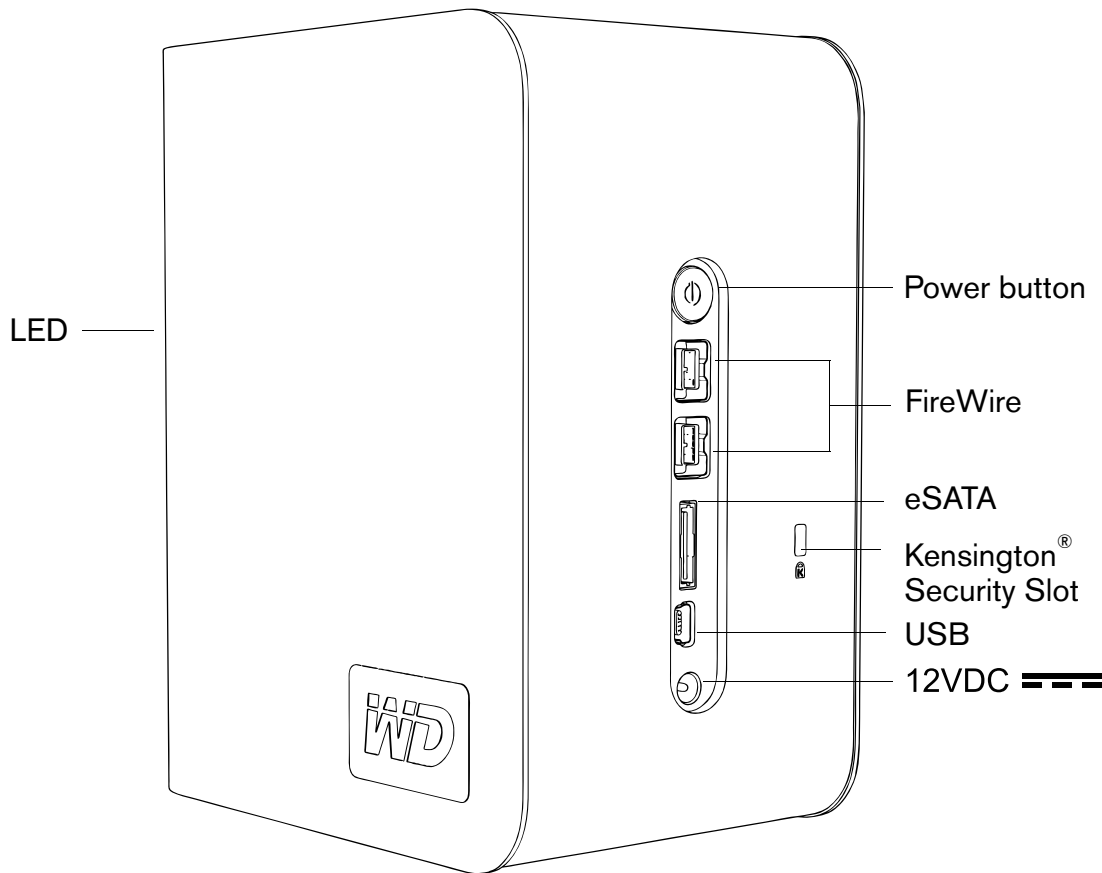
USB and FireWire Mode

The Capacity Gauge is enabled only through installation of WD Drive Manager, which must be installed on each system to which My Book is connected. The Capacity Gauge is updated automatically as the drive is used.

eSATA Mode

Capacity Gauge is not available in eSATA mode.

Interfaces



FireWire – This device is equipped with two FireWire 800 interfaces. FireWire 800 has a maximum data transfer rate of 800 Mb/s and is backward-compatible with FireWire 400 using a special adapter such as the FireWire 800 to 400 cable included in this kit. Connection to a FireWire 400 device transfers data at FireWire 400 speed (up to 400 Mb/s).

USB – The industry standard interface for most Windows-based computers. Hi-Speed USB (USB 2.0) supports data transfer rates up to 480 Mb/s. USB 2.0 is backward-compatible with USB 1.1. Connection to a USB 1.1 device transfers data at USB 1.1 speed (up to 1.5 Mb/s).

eSATA - Up to 3 Gb/s data transfers. To use this interface, an eSATA PCI card or eSATA motherboard port must be present on the host computer.

Kensington Security Slot

For drive security, this device is equipped with a Kensington Security Slot, which supports a standard Kensington security cable (sold separately). For more information on the Kensington Security Slot and available products, visit www.kensington.com.

Software

In addition to WD Drive Manager, this WD product is shipped with the following bonus software.

WD Anywhere Backup™ (Mac and Windows) is an intuitive and robust backup and recovery application that provides around-the-clock data protection. It features automatic backup to multiple destinations and synchronization of working files to keep them current. A user guide and online help are included with this application.

Google™ software (Windows only) allows you to search your drive, manage your photos, and simplify Web searches with included Google software

Copy Application Software allows you to back up the software included with this device.

3

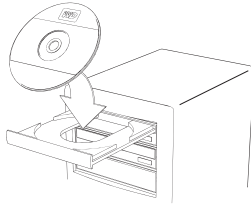
Setting Up

Macintosh

FireWire or USB*

Important: Follow the steps below to safely connect the device.

1. Turn on your computer and wait for the operating system to load.
2. Insert the software CD into the CD-ROM drive.



3. Double-click the CD-ROM drive icon.



4. Double-click the WD Drive Manager folder, which contains the software for this device



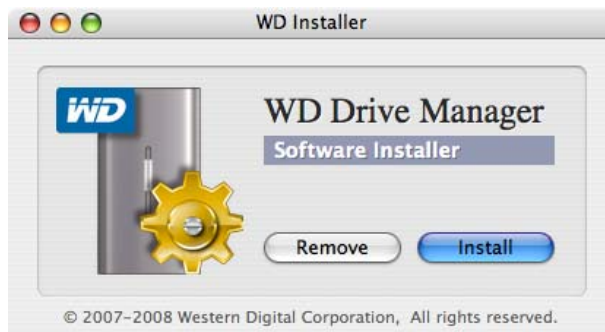
5. Double-click the WDDriveManager.dmg icon.



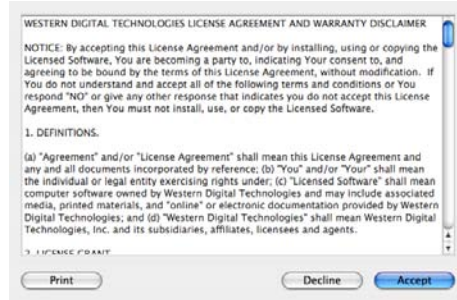
6. Double-click the WD Drive Manager Installer icon.



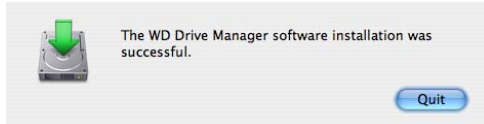
7. Click **Install**. WD Drive Manager enables the capacity gauge and Safe Shutdown™ and also installs WD RAID Manager.



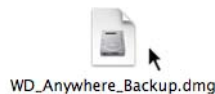
8. Click **Accept** to accept the license agreement and continue with the installation.



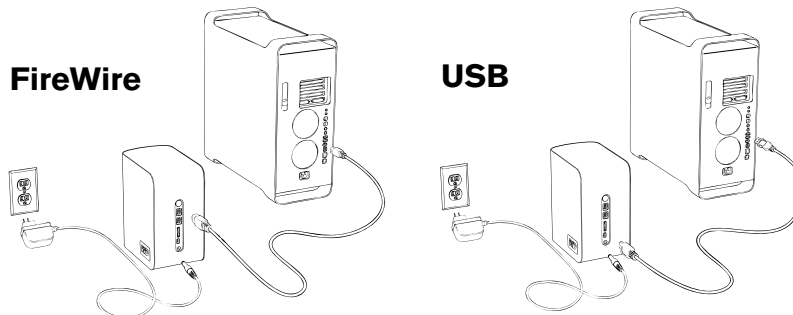
9. Click **Quit**.



10. If you want to install the backup software now, double-click the WD Anywhere Backup icon in the My Book Studio Edition II screen and follow the instructions as prompted.



11. Connect the adapter's DC cable plug to the DC power input at the rear panel of the product. Verify that plug type of your wall power adapter is the correct plug type for your region.*
12. Connect the wall adapter to your AC power receptacle.
13. Plug one end of the interface cable (USB, FireWire 800, or FireWire 800 to 400) into an available port on your computer.
14. Plug the other end of the interface cable into the device.



15. The unit will power up and mount to the system, and WD Drive Manager will appear in the status menu. Your My Book Studio Edition II is now installed and ready to use.

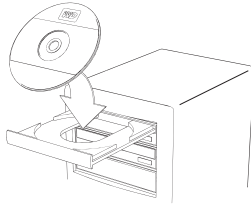
**This product may ship with a different AC adapter configuration, depending on your region.*

Note: For more information about interface types and connectors, search our knowledge base at support.wdc.com for answer ID# 1729.

eSATA

Note: The eSATA interface does not support WD Drive Manager

1. Turn on your computer and wait for the operating system to load.
2. Insert the software CD into the CD-ROM drive.



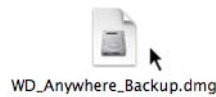
3. Double-click the CD-ROM drive icon.



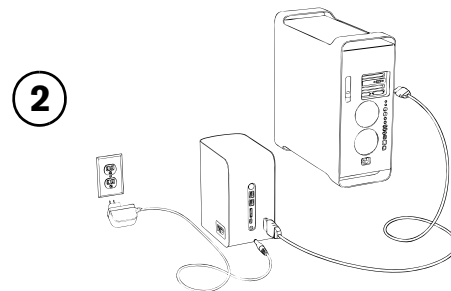
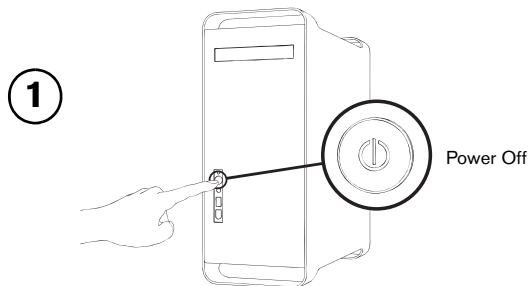
4. Double-click the WD Drive Manager folder, which contains the software for this device



5. If you want to install the backup software now, double-click the WD Anywhere Backup icon in the My Book Studio Edition II screen and follow the instructions as prompted.



6. Turn off your computer.



7. Connect the adapter's DC cable plug to the DC power input at the rear panel of the product. Verify that plug type of your wall power adapter is the correct plug type for your region.
8. Connect the wall adapter to your AC power receptacle.
9. Plug one end of the eSATA cable into an available port on your computer.
10. Plug the other end of the interface cable into the device.
11. Turn on your computer.
12. Turn on My Book by pressing the power button located on the back panel.
13. The unit will power up and mount to the system. Your My Book Studio Edition II is now installed and ready to use.

Note: Some eSATA controllers may require a system reboot to recognize the device.

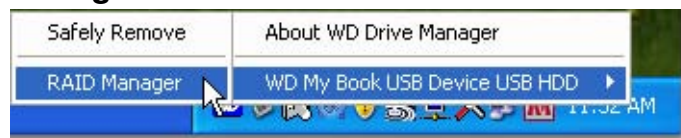
Windows

Important: You must first install the drivers and utilities on the included CD before connecting the unit. Follow the steps below to safely connect the device.

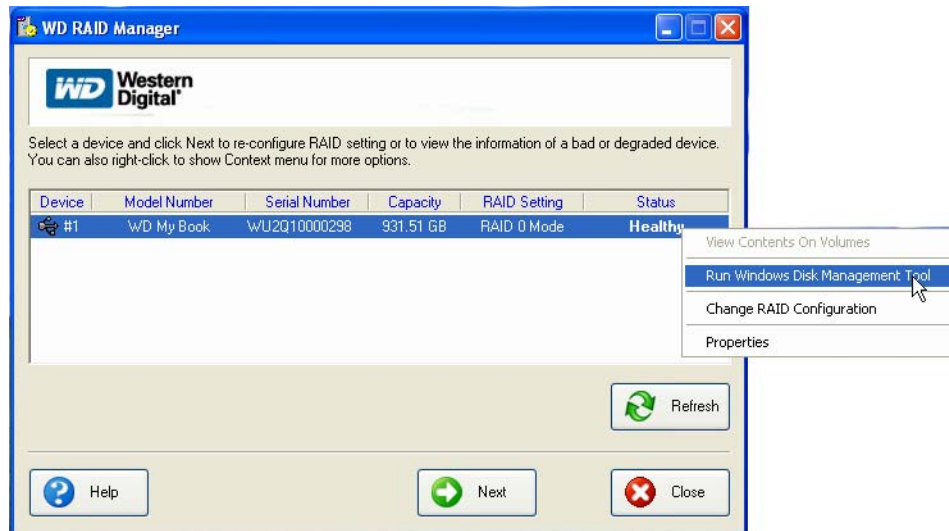
1. Turn on your computer.
2. Insert the software CD into the CD-ROM drive.
3. The CD autoruns. Click **Accept** in the terms of agreement screen and WD Drive Manager and drivers are installed automatically. WD Drive Manager enables the capacity gauge and Safe Shutdown™ and also installs WD RAID Manager.
Note: If AutoPlay is disabled on your computer, you must install the utilities manually. Go to the desktop. Double-click My Computer, My Book folder, WD_Windows_Tools folder, and Setup.exe. Then run the CD which installs the drivers.
4. The Application Installer screen displays a list of options including software, documentation, and a registration link. All applications are selected by default. Deselect any applications you do not want to install, then click **Start**. Or, click **Cancel** to exit and no applications will be installed.
5. Connect the adapter's DC cable plug to the DC power input at the rear panel of the product. Verify that plug type of your wall power adapter is the correct plug type. If incorrect, remove it and install the correct one.
6. Connect the wall adapter to your AC power receptacle.
7. Plug one end of the interface cable (USB, FireWire 800, or FireWire 400) into an available port on your computer.
8. Plug the other end of the interface cable into the device, after which the unit mounts to the system. The WD Drive Manager icon flashes in the system tray.
Note: If Windows prompts for additional drivers, allow it to perform its search.



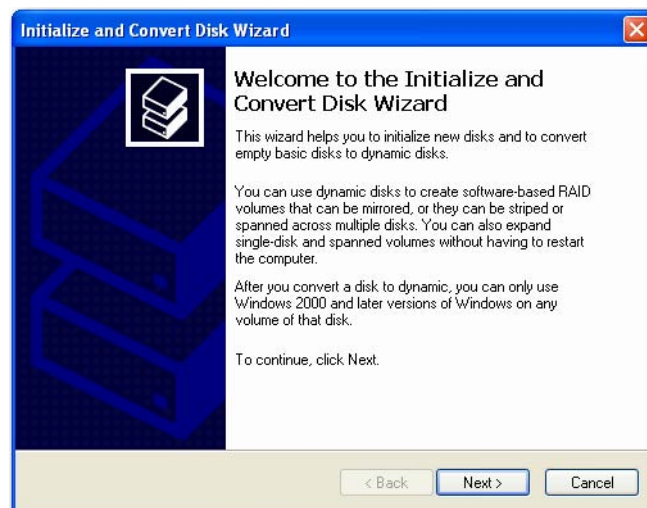
9. Since My Book Studio Edition II comes preformatted for Mac, you must now reformat it for Windows so your system recognizes the device. Right-click the WD Drive Manager system tray icon and point to **WD My Book**. Click **WD RAID Manager**.



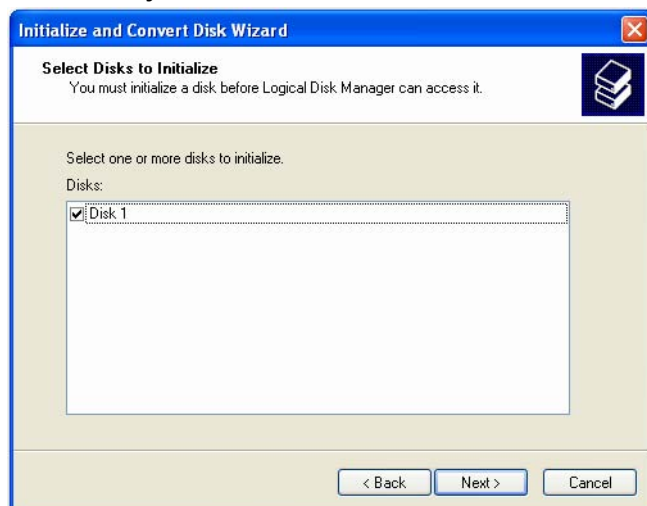
10. Click on the device, then right-click to bring up the context menu. Click **Run Windows Disk Management Tool**.



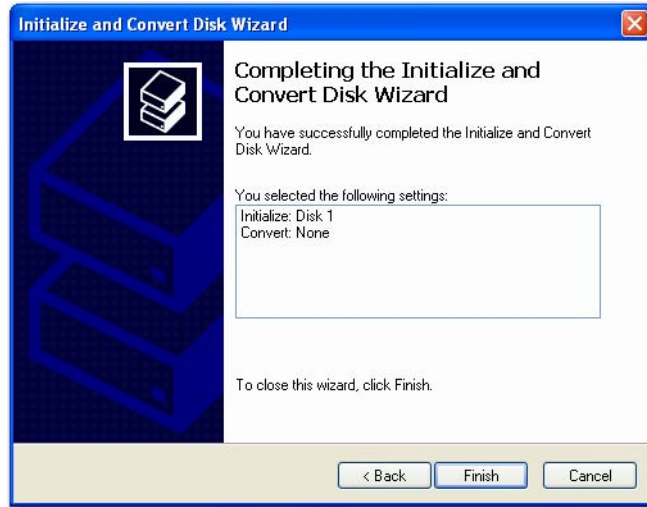
11. The Initialize and Convert Disk Wizard appears. Click **Next**.



12. The Select Disks to Initialize screen appears. The My Book disk number is selected by default. Click **Next**.



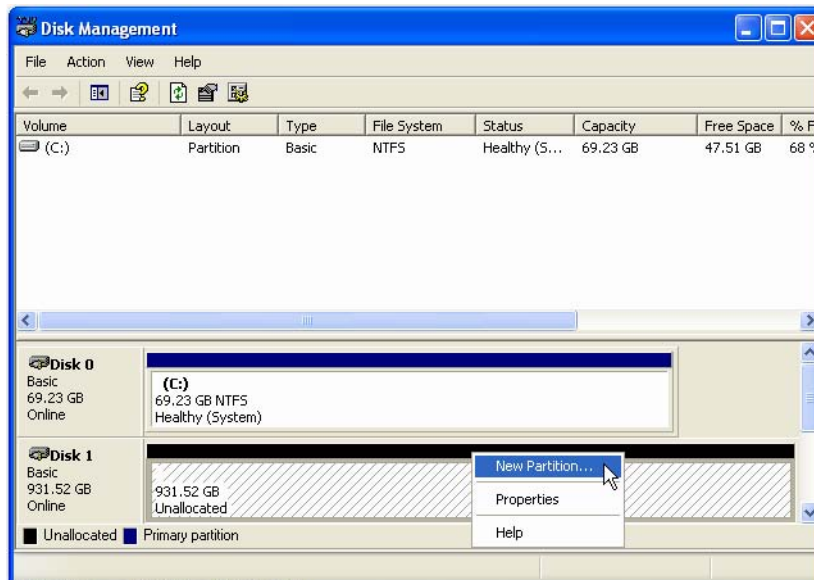
13. The Initialize and Convert Disk Wizard completes. Click **Finish**.



14. The device displays as a large Unallocated partition. Right-click on the black bar (Unallocated space) to see a menu of available options.

CAUTION: Be sure to select the Unallocated drive (black bar). Do not select a system drive or any other healthy drive.

Select **New Partition** or **New Simple Volume** from the menu of available options.

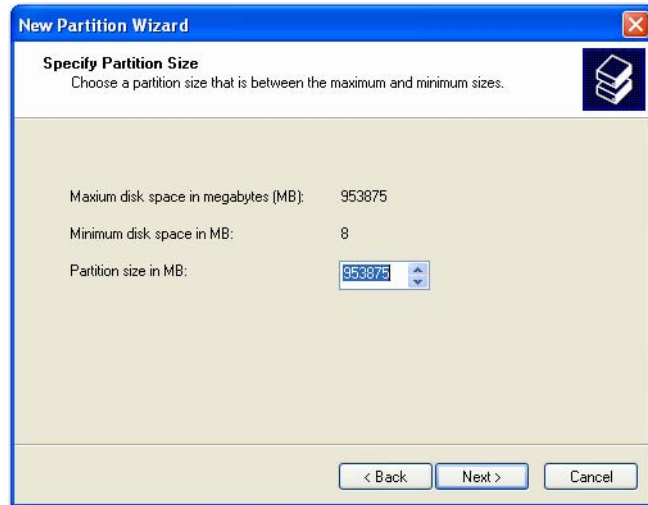


15. The Welcome to the New Partition Wizard or New Simple Volume Wizard appears.

Windows Vista: please proceed to the next step.

Windows XP: click **Next** to continue and select **Primary partition**. Click **Next**.

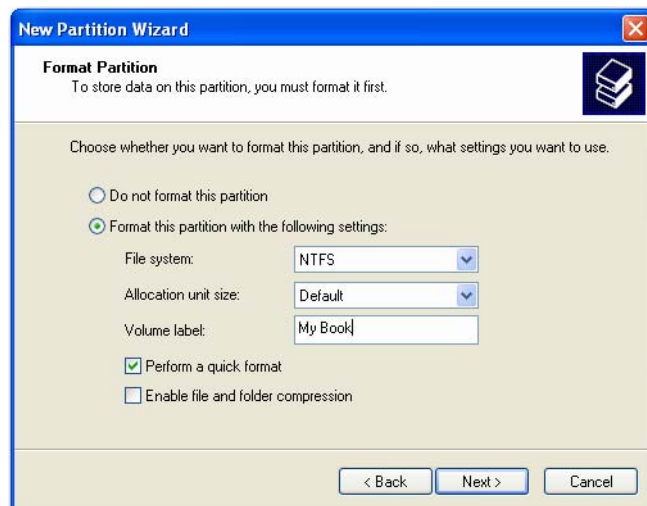
16. Select the size of the partition you wish to create and click **Next**.



17. Select a drive letter to assign to the partition and click **Next**.

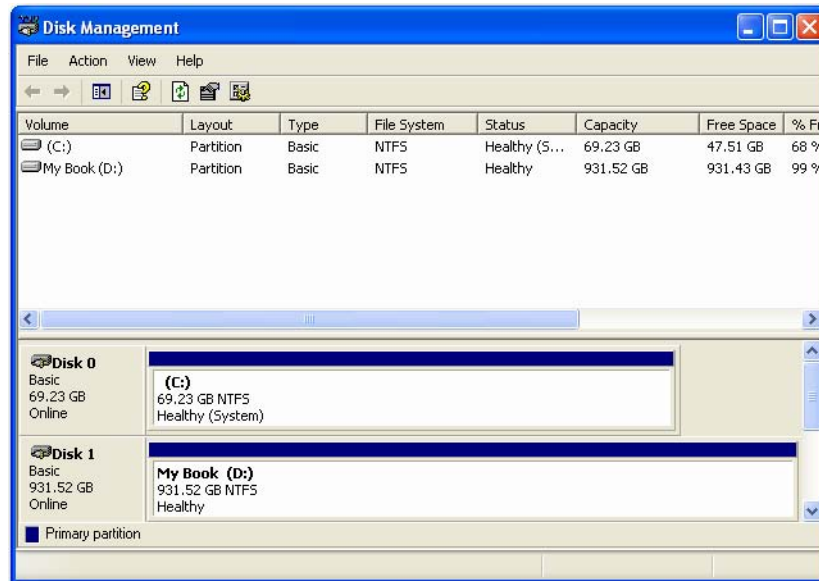


18. The Format Partition screen appears. On this screen, you can select the file system, allocation unit size, and volume label you wish to create on the drive. It is recommended that you enter "My Book" in the **Volume label** field and select **Perform a quick format** to save time in the formatting process.



Note: In almost all cases, it is best to leave the allocation unit size at default. If you are not dual-booting, it is recommended that you use NTFS as the file system (you can also select FAT16 or FAT32). Dynamic partitions cannot be created on an external hard drive. The Windows 2000 and Windows XP Disk Management utility cannot support the format of a FAT32 partition larger than 32GB. Go to support.microsoft.com and search for Microsoft Knowledge Base Article 184006 for additional information.

19. Click **Next** to verify the process and the choices you selected.
20. Click **Finish** to complete the process. After the formatting process completes, My Book appears as a drive letter in My Computer and is now installed and ready to use.



4

WD Drive Manager Status

WD Drive Manager Status provides a quick view of the general status of the device. To view WD Drive Manager Status in Mac, click the WD Drive Manager status menu icon and point to WD My Book RAID.



To view WD Drive Manager Status in Windows, roll the cursor over the WD Drive Manager system tray icon.



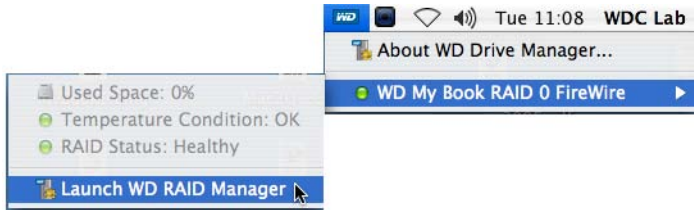
WD Drive Manager Status Messages

WD Drive Manager icon color/behavior	Condition icon color	Meaning
Blue	Green	Healthy
Blue flashing	Yellow	RAID 1 degraded
Blue	Yellow	RAID 1 rebuilding
Red flashing	Red	See WD Drive Manager Status for details

5

WD RAID Manager for Mac

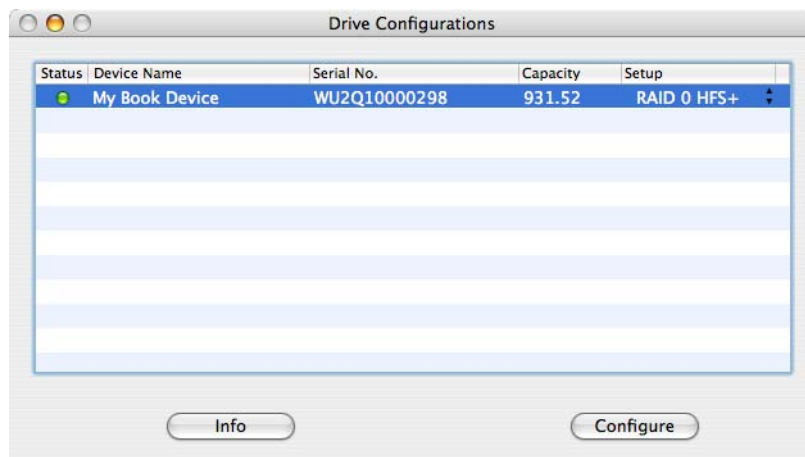
WD RAID Manager is a tool designed to help you easily manage your RAID system, including changing the RAID configuration and formatting the device. To launch WD RAID Manager, click the WD Drive Manager menu extra icon and point to **WD My Book**. Click **Launch WD RAID Manager**.



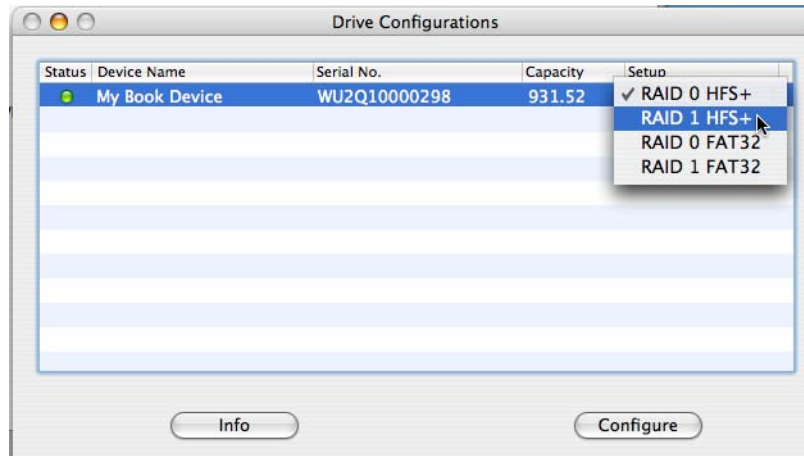
Configuring RAID

Important: Before you proceed, make sure to back up all files stored in My Book onto another storage device.

My Book Studio Edition II is preformatted for HFS+ (Journaled) and is preconfigured for RAID 0 (Striped) mode for maximum capacity and accelerated performance. This product also supports RAID 1 (Mirrored) mode for data protection which dedicates half the capacity to mirror the data on both drives A and B.



1. To configure or change the RAID setting, click on a device from the menu to display the popup menu. The checkmark indicates the current RAID configuration.



2. Select the desired RAID configuration and device format and click **Configure**.
3. When prompted to confirm, click **Configure** again.
4. As standard precaution, the system prompts you for an administrator's name and password to authenticate your action. Enter this information and click **OK**.



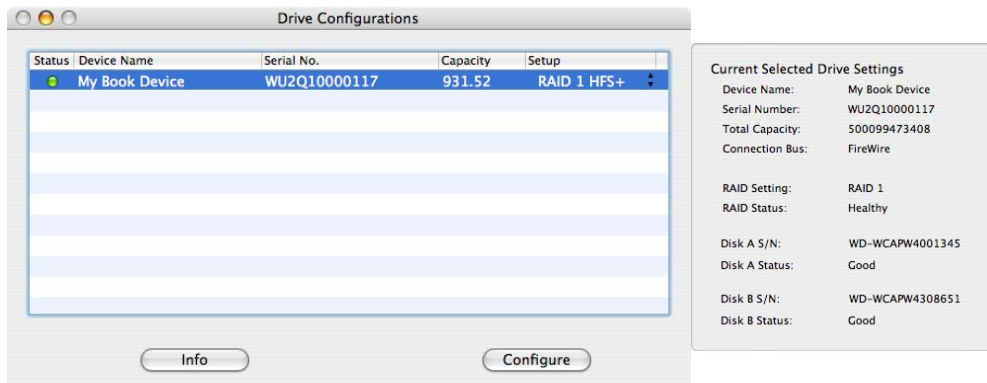
When configuring the device, WD RAID Manager automatically formats the disk as a single volume using the format and RAID type specified. FAT32 formats with a Master Boot Record partition map for Windows compatibility.

The HFS+ setting formats with an HFS Extended w/ Journal volume using a partition map type which best matches the Macintosh model the drive is currently connected to. On Macintosh computers with PowerPC processor(s), an Apple Partition Map structure is created. On Macintosh computers with Intel processor(s), a GUID Partition Table is created.

For information on how to make your My Book bootable on an Intel-based Macintosh, go to support.wdc.com and search for answer ID# 1787.

RAID Troubleshooting

WD RAID Manager monitors the activity of the drives in the RAID system so you can view the status of each drive and take the appropriate action. To view the device status as well as the status of each internal hard drive, including which drive (A or B) may have experienced a fault, click on a device and then click **Info**, which brings up a drawer on the right hand side of the main window.



RAID Status Messages

WD RAID Manager reports the following messages depending on the current status of your drive.

Displayed Status Text	Description	User Action
Healthy	Array is properly configured and operating normally.	None
Setting Mismatched	Drives from different RAID sets detected in slots.	Both slots have valid array configurations, but they do not agree on the settings and the device is not able to determine which configuration is newer. Install another drive that is not part of a different RAID array. Install the original drive that is part of the RAID array. Create a new array with the installed drives.
Degraded	The array configuration is valid and is currently RAID1, but one slot is marked as faulty.	RAID 1 only Consult the slot status values to determine which slot is faulty and replace the drive.
RAID Status Rebuilding	The array configuration is valid, but one slot is being rebuilt from the other slot.	RAID 1 only Recovering from degraded mode. Wait for rebuild to complete. (This may take several hours.)
Bad	Neither slot contains a valid array configuration.	Check disk status. See “Disk Status Messages” on page 20.

Disk Status Messages

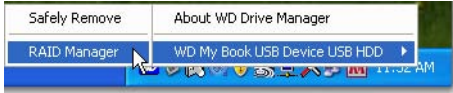
WD RAID Manager reports the following messages depending on the current status of your Disk A and B.

Displayed Status Text	Description	User Action
Good	The slot configuration contains valid data. Consult the array status to see if other errors have been detected.	None
No hard disk	The slot contains no HDD	Install drive in empty slot.
No Config	The slot does not contain a valid configuration.	Create New RAID set. (Loss of data) Mismatched capacity. Replace drive with identical capacity drive and re-create RAID set.
Faulty	The slot is marked as faulty.	Replace drive.
Rebuilding	The slot is currently being rebuilt from the other slot.	Wait for rebuild to complete. This will take several hours.
Good	Initialization failed to complete.	Replace other drive.
Rejected	The slot contains an HDD that does not meet the unit's requirements.	Install drive that is compatible with RAID device. Only WD Green Drives are compatible.

6

WD RAID Manager for Windows

WD RAID Manager is a tool designed to help you easily manage your RAID system, including changing the RAID configuration and formatting the device. To launch WD RAID Manager, click the WD Drive Manager system tray icon and point to **WD My Book**. Click **WD RAID Manager**.

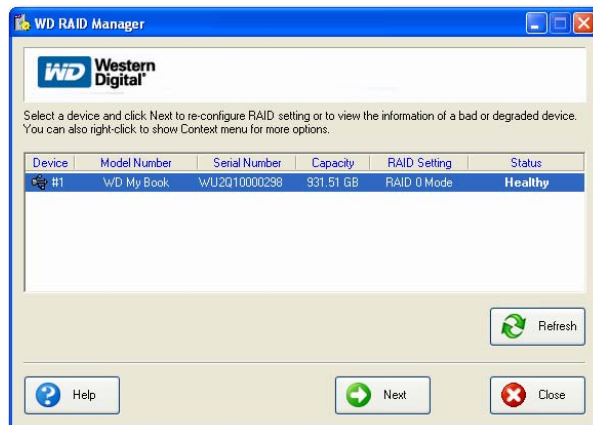


Configuring RAID

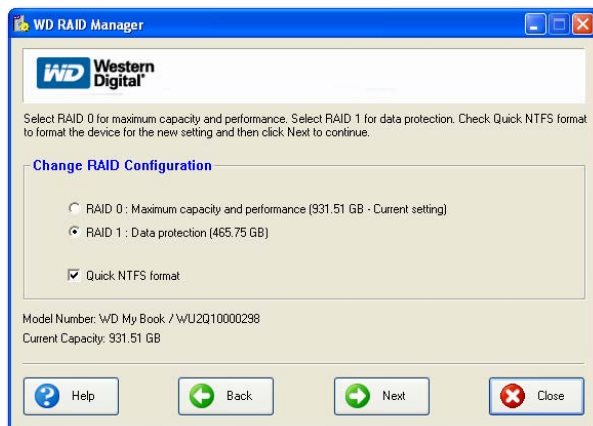
My Book Studio Edition II is preformatted for HFS+ (Journaled) and is preconfigured for RAID 0 (Striped) mode for maximum capacity and accelerated performance. This product also supports RAID 1 (Mirrored) mode for data protection which dedicates half the capacity to mirror the data on both drives A and B.

Important: Before you proceed, make sure to back up all files stored in My Book onto another storage device.

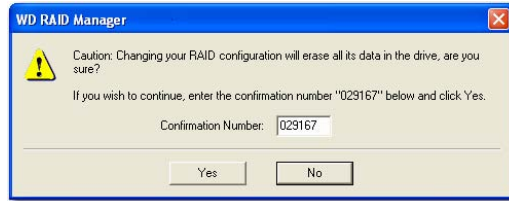
1. To configure or change the RAID setting, select the device from the menu and click **Next**.



2. Select the desired RAID configuration by clicking **RAID 0** or **RAID 1** (the following example shows RAID 1). Select **Quick NTFS format** if you want the drive formatted automatically following completion of the new RAID setting.



3. Enter the confirmation number provided, then click **Yes**. When prompted again, click **Yes** to confirm.



4. Click **Close** when finished.

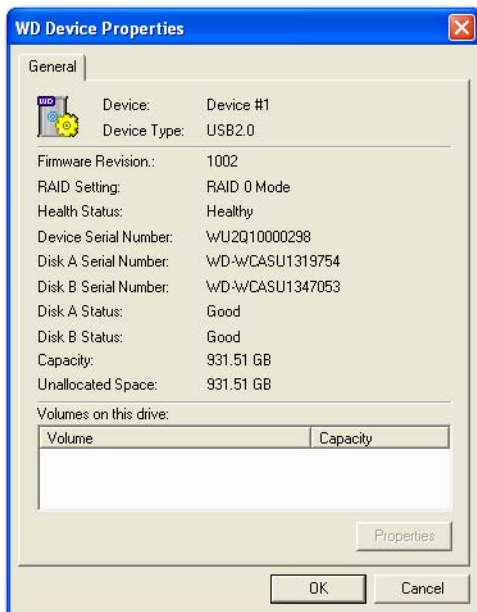
You can also use the context menu in WD RAID Manager to run Windows Disk Management Tool, perform NTFS quick format, or change the RAID configuration. Right-click on a device in the WD RAID Manager main screen to view options.



RAID Troubleshooting

WD RAID Manager monitors the activity of the drives in the RAID system, so at anytime, you can view the status of each drive and take the appropriate action. To view the device status, select the device from the menu and click **Next**. If you don't see the device on the menu, click **Refresh** to search for My Book devices connected to your computer system.

You can also right-click the device and choose **Properties**. In this screen, you can determine which drive (A or B) may have experienced a fault. This is reported in the Disk A or Disk B Serial Number field.



RAID Status Messages

WD RAID Manager reports the following messages depending on the current status of your drive.

Displayed Status Text	Description	User Action
Healthy	Array is properly configured and operating normally.	None
Setting Mismatched	Drives from different RAID sets detected in slots.	Both slots have valid array configurations, but they do not agree on the settings and the device is not able to determine which configuration is newer. Install another drive that is not part of a different RAID array. Install the original drive that is part of the RAID array. Create a new array with the installed drives.
Degraded	The array configuration is valid and is currently RAID1, but one slot is marked as faulty.	RAID 1 only Consult the slot status values to determine which slot is faulty and replace the drive.
RAID Status Rebuilding	The array configuration is valid, but one slot is being rebuilt from the other slot.	RAID 1 only Recovering from degraded mode. Wait for rebuild to complete. (This may take several hours.)
Bad	Neither slot contains a valid array configuration.	Check disk status. See "Disk Status Messages" on page 24.

Disk Status Messages

WD RAID Manager reports the following messages depending on the current status of your Disk A and B.

Displayed Status Text	Description	User Action
Good	The slot configuration contains valid data. Consult the array status to see if other errors have been detected.	None
No hard disk	The slot contains no HDD	Install drive in empty slot.
No Config	The slot does not contain a valid configuration.	Create New RAID set. (Loss of data) Mismatched capacity. Replace drive with identical capacity drive and re-create RAID set.
Faulty	The slot is marked as faulty.	Replace drive.
Rebuilding	The slot is currently being rebuilt from the other slot.	Wait for rebuild to complete. This will take several hours.
Good	Initialization failed to complete.	Replace other drive.
Rejected	The slot contains an HDD that does not meet the unit's requirements.	Install drive that is compatible with RAID device. Only WD Green Drives are compatible.

7

Turning Off/Disconnecting the Device

Auto-off

My Book turns off automatically when you shut down the computer. You also may follow these steps to turn off the device.

Important: To prevent data loss, close all active windows, files, and applications before shutting down the device, which will otherwise prevent successful safe shutdown.

Safe Shutdown™

The Power button features Safe Shutdown, which prevents the inadvertent powering down of My Book until all data is written to the device or system. To engage Safe Shutdown, press the Power button once. You may hear the device power down before the Power LED turns off. My Book is now shut down properly and may be safely disconnected.

Safe Shutdown is enabled only through installation of its driver, which must be installed on each system to which My Book is connected.


CAUTION: eSATA does not support Safe Shutdown.

Safe Removal

Mac

Drag the My Book icon to the Trash icon for proper dismount. You may hear the device power down as the Power LED flashes. When the Power LED is steady, you may press the Power button once or disconnect My Book's power cord to turn it off safely.

Windows

Right-click on the WD Drive Manager icon in your system tray and point to **My Book... > Safely Remove**. You can also right-click the Safely Remove Hardware icon  in your system tray and select **Safely Remove Hardware**. You may hear the device power down before the Power LED turns off. My Book is now shut down properly, and you may disconnect the device safely.

Unplugging the Device

You may perform normal system shutdown at any time and remove the product thereafter. If the computer is still on, first follow the instructions under Safe Shutdown or Safe Removal above.

1. Unplug the interface cable from the device.
2. Unplug the other end of the interface cable from the computer port.
3. Unplug the AC adapter from the power receptacle.
4. Unplug the the DC power connector from the power supply socket on the back of the device.

8

Replacing a Drive

My Book Studio Edition II is a limited user-serviceable product which allows for servicing of one or both internal hard drives in the enclosure.

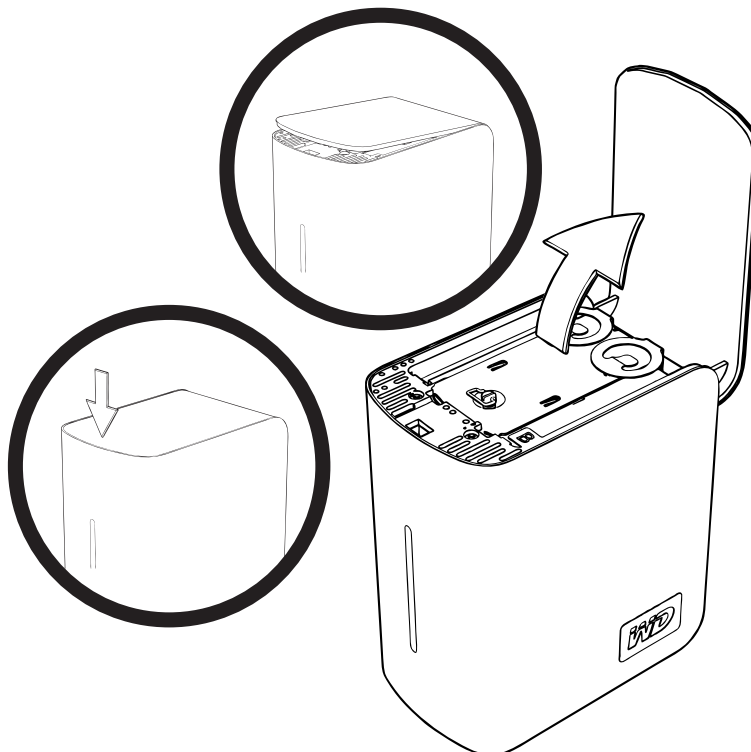
Important: Only WD Caviar® GP hard drive assemblies can be inserted into the My Book Studio Edition II enclosure.

In the event a fault occurs and you would like to service the device yourself, visit WD Technical Support at support.wdc.com and search the knowledge base article 1709 for detailed instructions on obtaining a replacement drive. When contacting Technical Support, have the following items ready: My Book serial number, date of purchase, and the serial number of the internal hard drive(s) which require replacement. Once you have received the replacement drive(s), follow the steps below to service My Book.

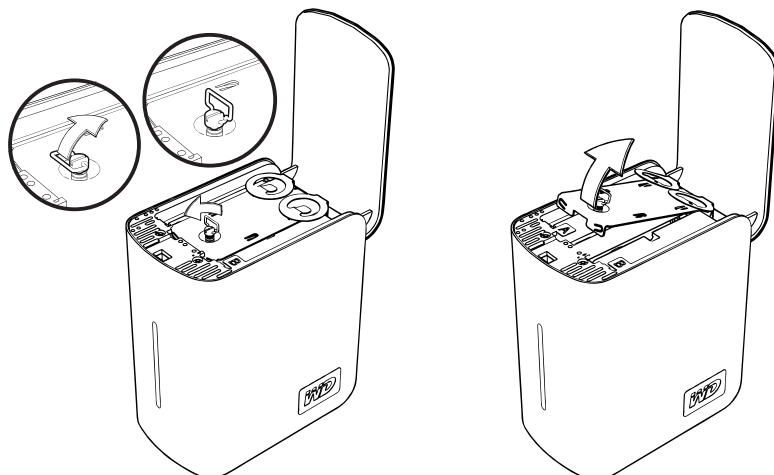
Important: To avoid ESD problems, ground yourself by touching the metal chassis of the computer before handling the device. Because articles of clothing generate static electricity, do not allow clothing to come in direct contact with the hard drive or circuit board components.

Before getting started, power off the unit and disconnect all of its cables.

1. Place the unit on a clean and stable surface.
2. Using your thumb, firmly push down on the top front panel of the unit to release the latch and open the cover.

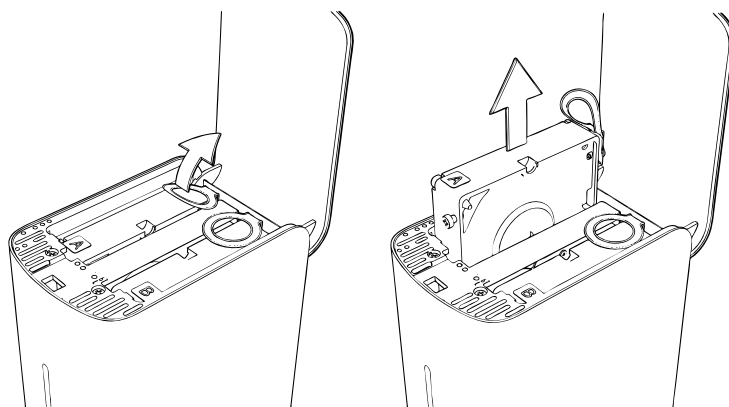


3. Loosen the thumbscrew that secures the drive cover plate. Remove the drive cover plate and set aside.

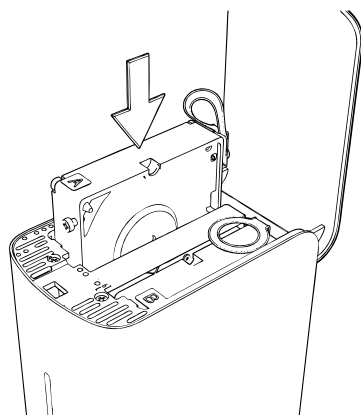


Note: Each drive is designated A or B by a color coded decal.

4. Locate the drive you wish to replace (A or B). Using the pulltab, carefully and slowly pull the drive assembly up and out of the enclosure and set aside.

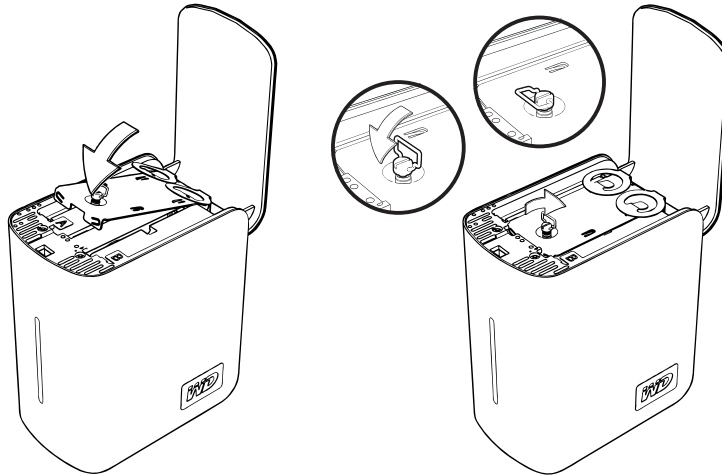


5. Gently slide the replacement drive assembly into the drive slot until is fully inserted.

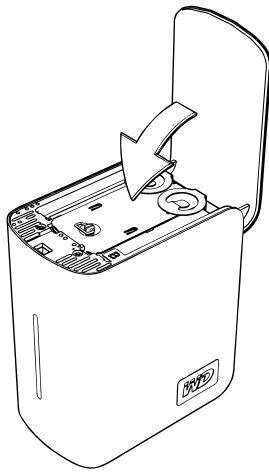


6. Replace the cover plate and secure it with the thumbscrew.

Note: Do not overtighten the thumbscrew.



7. Close the cover and firmly push down until it locks into place.



8. Reconnect only the power cable to the device. Do not connect computer interface cables.
9. The drive starts the rebuild process automatically and the LEDs cycle from bottom to top. The RAID rebuild may take up to 12 hours depending on drive capacity and activity, but typically will complete in 5-7 hours. Allow the RAID rebuild to complete.

Important: Do not attempt to use the device during the rebuild process.

10. Once complete, the LEDs will glow steadily to indicate power-on state.
11. Connect the interface cable. The WD Drive Manager Status displays (see “WD Drive Manager Status” on page 15).
12. Return the replacement drive following the instructions provided in the WD knowledge base article# 1709.

Important: Do not disassemble the internal drive and attached assembly components. Return the entire internal drive assembly intact to WD.

9

Troubleshooting

If you have problems when installing or using this product, visit our support Web site at support.wdc.com and search our knowledge base for more help.

How to**Answer ID**

- | | |
|--|------|
| ■ install My Book Studio Edition II on a Windows or Macintosh computer | 1691 |
| ■ use My Book Studio II Edition with your computer system | 1717 |
| ■ service My Book Studio Edition II to replace a hard drive | 1709 |
| ■ change the RAID setting of a WD My Book Studio Edition II | 1465 |
| ■ format the drive to Mac OS format | 287 |
| ■ install, partition, and format the drive in Windows XP/Vista | 207 |
| ■ install, partition, and format the drive in Windows 2000 | 34 |
| ■ make a device bootable on Intel-based Mac systems | 1787 |
| ■ obtain and reinstall the original software included on My Book | 1425 |
| ■ obtain further information on external hard drive interfaces | 1729 |

10

Appendix

Regulatory Compliance

FCC Class B Information

This device has been tested and found to comply with the limits of a Class B digital device, pursuant to Part 15 of the FCC Rules. These limits are designed to provide reasonable protection against harmful interference in a residential installation. This unit generates, uses, and can radiate radio frequency energy and, if not installed and used in accordance with the instructions, may cause harmful interference to radio or television reception. However, there is no guarantee that interference will not occur in a particular installation. Any changes or modifications not expressly approved by WD could void the user's authority to operate this equipment.

The following booklet, prepared by the Federal Communications Commission, may be helpful: *How to Identify and Resolve Radio/TV Interference Problems*. This booklet is Stock No. 004-000-00345-4 available from the US Government Printing Office, Washington, DC 20402.

ICES/NMB-003 Compliance

Cet appareil de la classe B est conforme à la norme NMB-003 du Canada.

This device complies with Canadian ICES-003 Class B.

Safety Compliance

Approved for US and Canada. CAN/CSA-C22.2 No. 60950-1, UL 60950-1: Safety of Information Technology Equipment.

Approuvé pour les Etats-Unis et le Canada. CAN/CSA-C22.2 No. 60950-1 : Sûreté d'équipement de technologie de l'information.

This product is intended to be supplied by a listed limited power source, double insulated, or direct plug-in power unit marked "Class 2."

CE Compliance for Europe

Verified to comply with EN55022 for RF emission; EN-55024 for Generic Immunity, as applicable; and EN-60950 for Safety.

Warranty Information

Obtaining Service

WD values your business and always attempts to provide you the very best of service. If this Product requires maintenance, either contact the dealer from whom you originally purchased the Product or visit our product support Web site at support.wdc.com for information on how to obtain service or a Return Material Authorization (RMA). If it is determined that the Product may be defective, you will be given an RMA number and instructions for Product return. An unauthorized return (i.e., one for which an RMA number has not been issued) will be returned to you at your expense. Authorized returns must be shipped in an approved shipping container, prepaid and insured, to the address provided on your return paperwork. Your original

box and packaging materials should be kept for storing or shipping your WD product. To conclusively establish the period of warranty, check the warranty expiration (serial number required) via support.wdc.com. WD shall have no liability for lost data regardless of the cause, recovery of lost data, or data contained in any Product placed in its possession.

Limited Warranty

WD warrants that the Product, in the course of its normal use, will be free from defects in material and workmanship for a period of five (5) years, unless otherwise required by law, and will conform to WD's specification therefor. This limited warranty period shall commence on the purchase date appearing on your purchase receipt. WD shall have no liability for any Product returned if WD determines that the Product was stolen from WD or that the asserted defect a) is not present, b) cannot reasonably be rectified because of damage occurring before WD receives the Product, or c) is attributable to misuse, improper installation, alteration (including removing or obliterating labels and opening or removing external enclosures, unless the product is on the list of limited user-serviceable products and the specific alteration is within the scope of the applicable instructions, as found at support.wdc.com), accident or mishandling while in the possession of someone other than WD. Subject to the limitations specified above, your sole and exclusive warranty shall be, during the period of warranty specified above and at WD's option, the repair or replacement of the Product. The foregoing warranty of WD shall extend to repaired or replaced Products for the balance of the applicable period of the original warranty or ninety (90) days from the date of shipment of a repaired or replaced Product, whichever is longer.

The foregoing limited warranty is WD's sole warranty and is applicable only to products sold as new. The remedies provided herein are in lieu of a) any and all other remedies and warranties, whether expressed, implied or statutory, including but not limited to, any implied warranty of merchantability or fitness for a particular purpose, and b) any and all obligations and liabilities of WD for damages including, but not limited to accidental, consequential, or special damages, or any financial loss, lost profits or expenses, or lost data arising out of or in connection with the purchase, use, or performance of the Product, even if WD has been advised of the possibility of such damages. In the United States, some states do not allow exclusion or limitations of incidental or consequential damages, so the limitations above may not apply to you. This warranty gives you specific legal rights, and you may also have other rights which vary from state to state.

WD Service and Support

If you need additional information or help during installation or normal use of this product, visit our product support Web site at support.wdc.com and choose from these topics:

- **Warranty Services** — Obtain warranty information, warranty status, extended warranty, product replacement, RMA status, and shipping and packaging information.
- **Downloads Library** — Download installation software and drivers.
- **Technical Information** — Access product specifications, technical tips, and the online forum.
- **Knowledge Base** — Explore our expert knowledge base and Frequently Asked Questions.
- **Service Partners** — Find available WD-approved service and support in your region.
- **Contact Support** — Contact a support representative by e-mail.
- **Rebates** — Check the status of rebate submissions.
- **Localized Support** — Display service and support information in various languages.

When contacting WD for support, have your WD product serial number, system hardware, and system software versions available.

support.wdc.com
www.westerndigital.com

800.ASK.4WDC	North America
949.672.7199	Spanish
+800.6008.6008	Asia Pacific
+31.20.4467651	EMEA

Western Digital
20511 Lake Forest Drive
Lake Forest, California 92630 U.S.A.

Information furnished by WD is believed to be accurate and reliable; however, no responsibility is assumed by WD for its use nor for any infringement of patents or other rights of third parties which may result from its use. No license is granted by implication or otherwise under any patent or patent rights of WD. WD reserves the right to change specifications at any time without notice.

Western Digital, WD, the WD logo, My Book, and WD Caviar are registered trademarks; and Studio Edition, WD Anywhere Backup, and Safe Shutdown are trademarks of Western Digital Technologies, Inc. Other marks may be mentioned herein that belong to other companies.

© 2008 Western Digital Technologies, Inc. All rights reserved.

4779-705010-A01 Feb 2008

Index

A

Auto-off 25

C

Capacity gauge 4
CE compliance 30
Compatibility, system 2
Compliance, regulatory 30
Configuring RAID 16, 21
Connecting the device 7, 9

D

Device
 connecting 7, 9
 disconnecting 25
 turning off 25

Drive

 configuration 4
 format 4
 replacing 26

Drive status 15

E

eSATA 5
Europe, CE compliance 30

F

FAQs 29
FCC Class B information 30
FireWire 5
Frequently asked questions 29

H

Handling precautions 3

I

ICES/NMB-003 compliance 30
Interfaces
 FireWire 800/400, USB, and eSATA 5

K

Kensington Security Slot 5
Kit contents 1

L

LED indicators 4
 capacity gauge 4
Limited warranty 31

O

Obtaining service 30

P

Product registration 2

R

RAID

 configuring 16, 21
 disk messages 20, 24
 status messages 19, 23
 troubleshooting 18, 22

Registration, product 2

Regulatory compliance 30

Replacing a drive 26

S

Safe removal 25
Safe Shutdown 25
Safety compliance 30
Service, WD 30, 32
Software
 supplied on CD 6
 WD RAID Manager-Mac 16
 WD RAID Manager-Windows 21
Support, WD 32
System compatibility 2

T

Troubleshooting 29
Turning off the device 25

U

UL 30
Underwriters Laboratories Inc. 30
USB 5

W

Warranty 30
Warranty, limited 31
WD
 service 32
 support 32
WD Drive Manager status 15
WD RAID Manager
 Mac 16
 Windows 21