

p r e s s



ROHDE&SCHWARZ



Headquarters: 7150-K Riverwood Dr.
Columbia, MD 21046
410 910-7800

Oregon Office: 2540 SW Alan Blumlein Way, M/S 58-925
Beaverton, OR 97077
503 627-2684

REPRESENTATIVE LIST

MAINE, VERMONT, NEW HAMPSHIRE, MASSACHUSETTS, CONNECTICUT, ROHDE ISLAND

NORTHEAST MARKETING ASSOCIATES, INC.

148 Main Street
North Andover, MA 01845
978 557-1001
888 490-6624
978 557-9490 - fax
Al Guarino aguarino@nmainc.com
www.nwmainc.com

N. NEW YORK

NORTHERN TECHNICAL SALES

30 Grove Street
Pittsford, NY 14534
585 385-6480
585 385-7546 - fax
Brian R. Fox bfox@ntsny.com
www.ntsny.com

S. NEW YORK, E. PENNSYLVANIA, NEW JERSEY, DELAWARE

CONTECH MARKETING, INC.

4041D Hadley Road, Suite 101
South Plainfield, NJ 07080
908 755-5700
908 755-3801 - fax
Sam Simone sam@contech-rti.com
www.contech-rti.com

MARYLAND, VIRGINIA, WASHINGTON, D.C.

CREATIVE MARKETING ASSOCIATES, LTD.

9140-H Guilford Road
Columbia, MD 21046
301 953-7740
301 725-5088 - fax
William (Billy) A. Mitchell bmitchell@cmaltd.com
Belinda Winstead belinda@cmaltd.com
www.cmaltd.com



ROHDE & SCHWARZ

Headquarters: 7150-K Riverwood Dr.
Columbia, MD 21046
410 910-7800

Oregon Office: 2540 SW Alan Blumlein Way, M/S 58-925
Beaverton, OR 97077
503 627-2684

REPRESENTATIVE LIST

WASHINGTON, OREGON, ALASKA, HAWAII

SYNTEK - SYNERGISTIC TECHNOLOGIES

123 Lake Street South, Suite B1
Kirkland, WA 98033
425 822-7777
800 548-8911
425 822-9333 - fax
Craig Howland chsyntek@aol.com
www.syntek.com

CALIFORNIA, NEVADA

WARD DAVIS ASSOCIATES

2623 Manhattan Beach Boulevard
Redondo Beach, CA 90278
310 643-6977
818 416-2944
310 643-6035 - fax
Bill Breyer bbreyer@warddavis.com
Barbara Soto bsoto@warddavis.com
www.warddavis.com

MONTANA, IDAHO, WYOMING, UTAH, COLORADO, ARIZONA, NEW MEXICO

TMS - TECHNICAL MARKETING SPECIALISTS

7860 E. Berry Place, suite 110
Greenwood Village, CO 80111
303 488-0220
800 342-8408
303 488-0080 - fax
Charles Badzik cbadzik@tmssales.com
Arlene Brennan abrennan@tmssales.com
www.tmssales.com

NORTH DAKOTA, SOUTH DAKOTA, MINNESOTA, N. IOWA, WISCONSIN, N. ILLINOIS, INDIANA, W. KENTUCKY

DYTEC MIDWEST, INC.

3385 N. Arlington Heights Road
Arlington Heights, IL 60004
847 255-3200
847 255-4874 - fax
James D. Okon jokon@dytecmw.com
Margo Halpern margoh@dytecmw.com
www.dytecmw.com

MICHIGAN, OHIO, E. KENTUCKY, WEST VIRGINIA, W. PENNSYLVANIA,

DYTEC EAST

10826 Ravenna Road Suite #1
Twinsburg, OH 44087
412 531-1088
800 732-9802
412 531-7769 - fax
Rich Perhala rperhala@dyteceast.com
www.dyteceast.com

NEBRASKA, S. IOWA, S. ILLINOIS, MISSOURI, KANSAS

DYNAMIC TECHNOLOGY, INC.

1620 E Ave. NE
Cedar Rapids, IA 52402
319 221-1515
800 557-1984
319 221-1516 - fax
Gene Peterson crdti@dtirep.com
www.dtirep.com

TEXAS, OKLAHOMA, ARKANSAS, LOUISIANA

TESTECH, INC.

401 International Parkway, Suite 108
Richardson, TX 75081
972 644-5010
972 644-3820 - fax
Larry Milligan larry@testech.com
Tammy Jackson tammy@testech.com
www.testech.com

TENNESSEE, MISSISSIPPI, ALABAMA, NORTH CAROLINA, SOUTH CAROLINA, GEORGIA, FLORIDA

SOUTHERN MARKETING ASSOCIATES, INC.

2180 State Rd. 434 West, Suite 1124
Longwood, Florida 32779
407 682-7317
407 682-7443 - fax
Charlie Snyder csnyder@southernmarketing.com
Pam Snyder psnyder@southernmarketing.com
www.southernmarketing.com

New options

96 kHz sampling rate



Audio Analyzer R&S UPL

The solution for the budget-conscious

- ◆ For all interfaces, analog, digital and combined
- ◆ Real dual-channel measurements
- ◆ Maximum dynamic range
- ◆ FFT analysis
- ◆ Jitter analysis

- ◆ Interface tester
- ◆ Freely programmable filters
- ◆ Versatile functions
- ◆ Compact unit with integrated PC
- ◆ Automatic test sequences
- ◆ Extensive online help

New options:

- ◆ 3G Mobile Phone Test (R&S UPL-B9)
- ◆ LAN Interface (R&S UPL-B11)
- ◆ Coded Audio Signal Generation (R&S UPL-B23)



ROHDE & SCHWARZ

Audio analysis today and tomorrow

Analog and digital

Audio signal processing without digital technology is no longer conceivable. Yet, analog technology is still present and constantly being improved. State-of-the-art measuring instruments must therefore be able to handle both analog and digital signal processing.

The Audio Analyzer R&S UPL performs virtually every type of analog measurement: frequency response measurements; externally controlled sweeps with reference traces; determination of 3rd order difference frequency distortion; or spectral display of demodulated wow and flutter signals. In contrast to many other audio analyzers, the R&S UPL can perform real dual-channel measurements in the audio-frequency range, i.e. there is no need for

switchover between two inputs and this type of measurement is not limited to a few special cases.

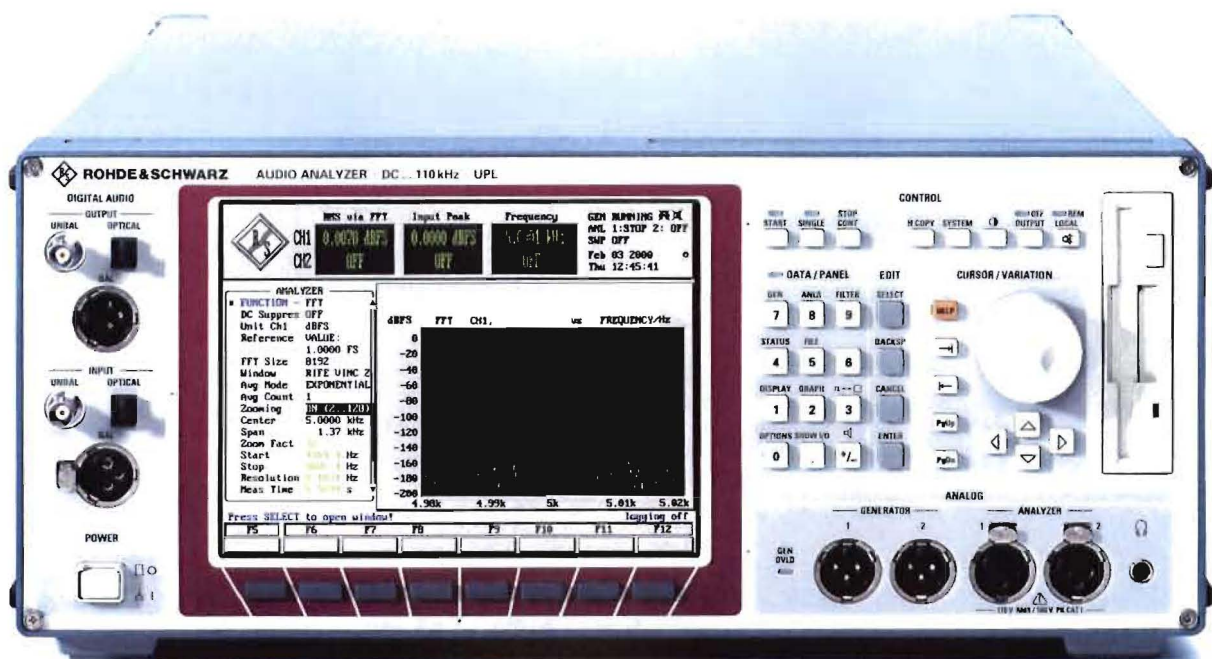
The generator is equally versatile: it supplies any conceivable signal whether sine wave, noise signals, or multi-sine wave signals comprising up to 7400 frequencies.

In addition, the R&S UPL features excellent technical data: analog sine wave generation with harmonics of typ. -120 dB; spectrum displays with a noise floor below -140 dB for analog and -160 dB for digital interfaces; and FFT with a maximum frequency resolution of 0.05 Hz.

The R&S UPL provides signal monitoring via loudspeaker, jitter measurements on digital audio signals, resynchronization of jittered digital audio signals by means of a jitter-free clock signal, and much more.

Superior analysis concept

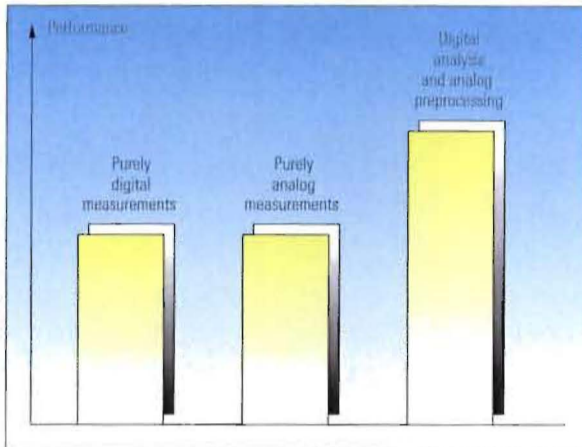
The R&S UPL performs all measurements using digital signal processing. Analog signals to be tested undergo elaborate pre-processing before they are digitized and measured by means of digital routines. For example, in THD measurements, the fundamental is attenuated by means of a notch filter and the residual signal amplified by 30 dB before it is digitized. In this way, the dynamic range can be extended beyond that offered by the internal 20-bit converter. This provides sufficient margin for measuring converters of the future, which will be more advanced than those with present-day technology (see graph on right). This concept ensures performance and flexibility by far superior to instruments providing purely analog or digital measurements.



It also offers many other advantages over analog technology alone:

- ◆ The test routines for analog and digital interfaces are identical. This allows, for example, the direct comparison of IMD measurements made ahead of and after a converter.

- ◆ In intermodulation measurements, spurious components are measured selectively for all frequencies in accordance with the mathematical formulae of the applicable test standards. This procedure prevents the inclusion of adjacent components in the measurements, which is usually inevitable with analog test methods.



The intelligent combination of analog and digital measurement techniques paves the way for future applications.

- ◆ All test functions are available on the analog and the digital interfaces. This makes it possible to perform measurements at any point along a common analog and digital transmission path, the only way to ensure efficient and complete testing.
- ◆ The filters are also implemented digitally, yielding a more or less infinite number of them – and this also holds true for measurements on analog interfaces. To loop a new filter into the test path, you merely have to choose the type of filter (e.g. highpass), cut-off frequency and attenuation.
- ◆ Measurement speed is usually higher than with analog techniques since digital test routines can adapt their speed to the input frequency.
- ◆ And last but not least: Operation is the same for the analog and the digital interfaces – a feature that should not be underestimated.

A future-proof investment

No one can accurately predict the effects that future developments in digital technology will have on the audio world and the resulting test requirements. Yet this is not a problem for the Audio Analyzer R&S UPL. Since all test functions are implemented digitally, the R&S UPL can be adapted to changing requirements by simply loading the necessary software – and this also applies to analog interfaces.

One more benefit: Rohde & Schwarz is the only manufacturer to equip its audio analyzers with 32-bit floating-point signal processors throughout, thus offering plenty of capacity beyond the limits of today's common 24-bit technology.

A competent partner

The name Rohde & Schwarz stands for excellent quality – thousands of audio analyzers are already in the hands of satisfied customers and have been operating successfully for many years. Following in the footsteps of the exclusively analog R&S UPA and R&S UPD, which still hold the top position in today's audio measurement technology, the Audio Analyzer R&S UPL was developed to complement the product line.

As a competent partner we will be happy to advise you on the optimum use of our instruments. Our representatives are available all over the world, and our customer support center and application engineers in Munich can help you find the right solution to your measurement tasks. In addition, a wealth of suggestions and solutions can be found in our application notes and software.

As part of our emphasis on quality, Rohde & Schwarz instruments are certified in compliance with ISO 9001 and ISO 14001.

Certified Environmental System
ISO 14001
REG. NO. 1954

Certified Quality System
ISO 9001
DQS REG. NO. 1954

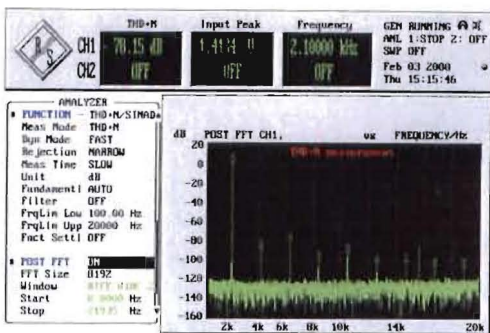


Fig. 1: Automatic marking of harmonics in THD+N measurements makes nonharmonics visible at a glance.

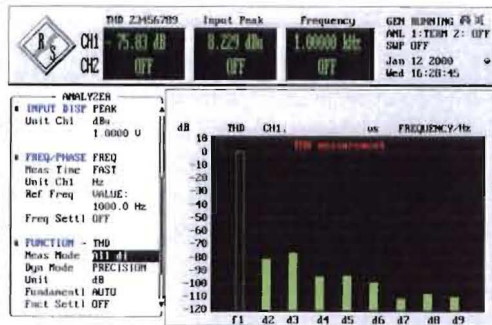


Fig. 2: THD measurements can include single harmonics, all harmonics or any combination of harmonics.

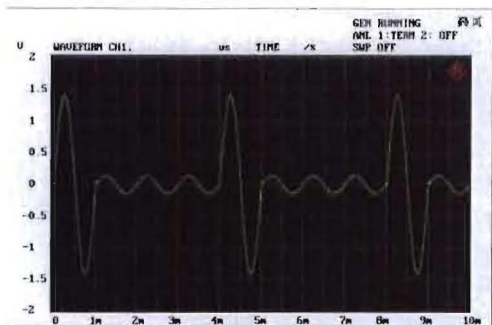


Fig. 3: The waveform function displays the test signal in the time domain. The example shows a sine wave burst.

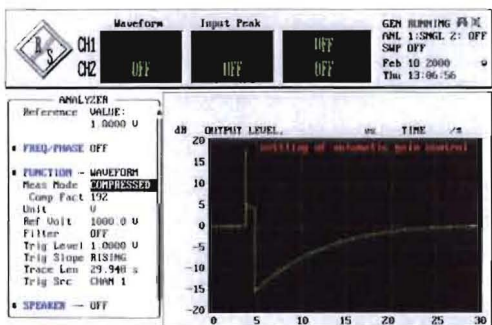


Fig. 4: The transient characteristics of an AGC play an important role in testing hearing aids or automatic volume control on tape recorders.

It does it all

Test signals – made to order

The generators of the R&S UPL supply an extremely wide variety of analog and – when the options R&S UPL-B2 or R&S UPL-B29 are used – digital test signals:

◆ Sinewaves

For level and harmonic distortion measurements. The signal can be applied to an equalizer with selectable nominal frequency response, e.g. for compensating the frequency response of the test assembly.

◆ Two-tone signal

For modulation distortion analysis. Various amplitude ratios can be selected and the frequencies are continuously adjustable.

◆ Difference tone signal

For intermodulation measurements with continuous setting of both frequencies.

◆ Multitone signal

Can comprise up to 17 sinewaves of any frequency and with the same or different amplitude; setting the phase is also possible with the R&S UPL-B6.

◆ Sine burst signal

With adjustable interval and ON time as well as programmable low level, e.g. for testing AGCs.

◆ Sine2 burst

Also with adjustable interval and ON time, e.g. for testing rms rectifier circuits.

◆ Special multitone signal

Can comprise up to 7400 frequencies with selectable amplitude distribution. The frequency spacing can be linked to the resolution used for the fast Fourier transform, thus enabling rapid and precise single-shot measurements of the frequency response of a DUT.



◆ Noise

With a variety of probability distributions, e.g. for acoustic measurements; setting of crest factor with the R&S UPL-B6.

◆ Arbitrary waveforms

For generating any voltage curve of up to 16k points. Test signals can be output in different file formats, e.g. voice and music signals stored as WAV files.

◆ Two-channel sinewave signals

For the two digital output channels when the UPL-B6 is used.

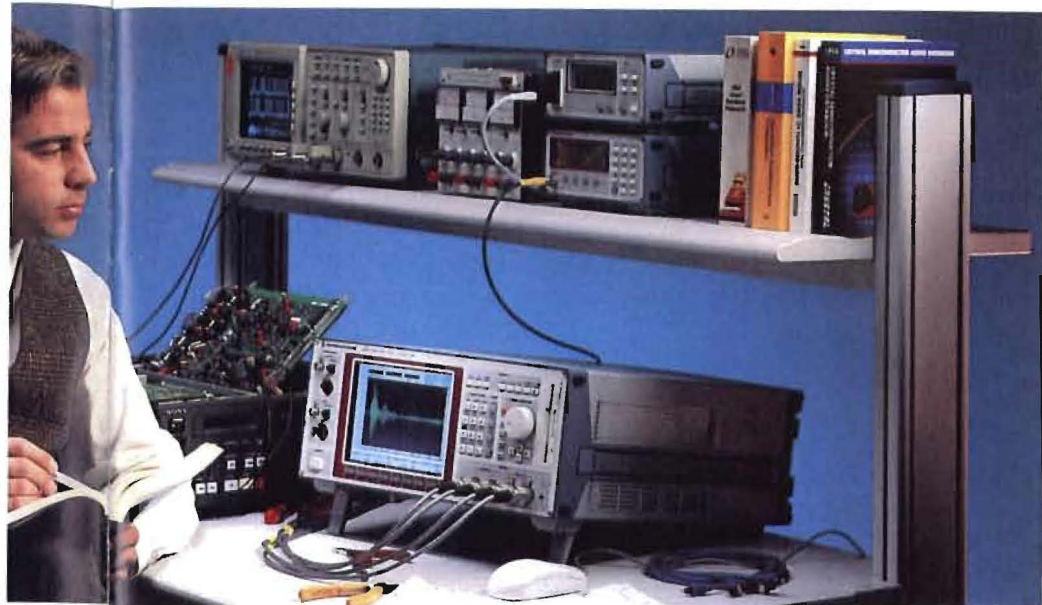
◆ AM and FM

For sinewave signals.

◆ DC

Also with sweep function.

Signals can be generated with an offset. Moreover, digital audio signals can be dithered with adjustable level and selectable amplitude distribution.



Versatile test functions

The R&S UPL offers a wealth of measurement functions both for analog and – when the option R&S UPL-B2/-B29 is used – for digital interfaces.

◆ Level or S/N

This function includes rms, peak or quasi-peak weighting and ensures high measurement speeds due to automatic adaptation of integration time to the input signal.

◆ Selective level

The center frequency of the bandpass filter can be swept or coupled to the generator frequency, to the frequencies of a multitone signal (e.g. for fast frequency response measurements) or to the input signal.

◆ SINAD or THD+N

The sum of all harmonics and noise is measured (Fig. 1).

◆ Total harmonic distortion (THD)

Individual harmonics, all harmonics or any combination of harmonics can be measured (Fig. 2).

◆ Modulation distortion

This measurement complies with DIN-IEC 268-3. 2nd and 3rd order intermodulation is measured.

◆ Difference frequency distortion (DFD)

This intermodulation measurement uses the difference tone method. 2nd and 3rd order intermodulation is measured.

◆ Wow and flutter

This measurement uses the DIN IEC, NAB, JIS or 2-sigma method in accordance with DIN IEC and also displays the demodulated-signal spectrum.

◆ DC voltage

◆ Frequency, phase and group delay

◆ Polarity

Signal paths are checked for reversed polarity.

◆ Crosstalk

◆ Waveform function

This function is used to represent the test signal in the time domain (Fig. 3). Waveforms can be smoothed by interpolation. Slow sequences can be displayed compressed, e.g. for analyzing the transient response of compander or AGC circuits (Fig. 4).

◆ Extended Analysis Functions R&S UPL-B6

The **coherence and transfer functions** determine the transfer characteristics of complex test signals; **third octave analysis** is used mainly for acoustic measurements; **rub & buzz** is measured in loudspeaker production.



Tests on hi-fi components call for increasingly complex measurement techniques. Results obtained in the test lab must be verified in production, which usually requires economical solutions for handling large batches rather than the use of all available functions. The R&S UPL is an ideal choice for this task. It optimally complements its "bigger brother", the Audio Analyzer R&S UPD, which is mainly employed in development. The two units share the exact same IEC/IEEE bus commands, which means they have the same operating concept and can be used together.

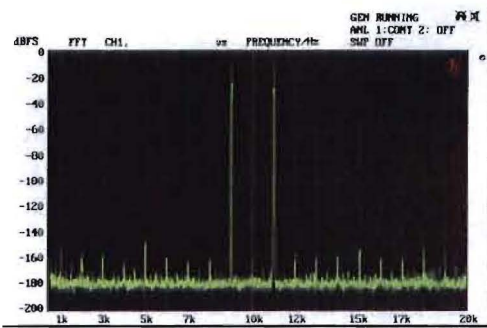


Fig. 5: FFT spectrum of two-tone signal shown on full screen.

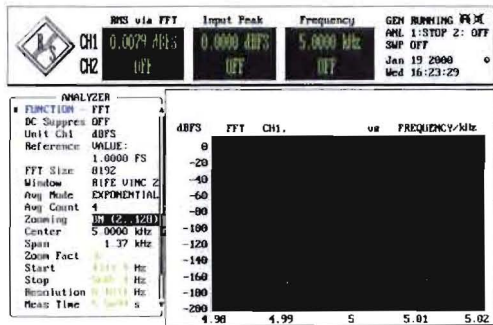


Fig. 6: With the zoom FFT function, sidebands spaced only a few hertz from the signal can be displayed.

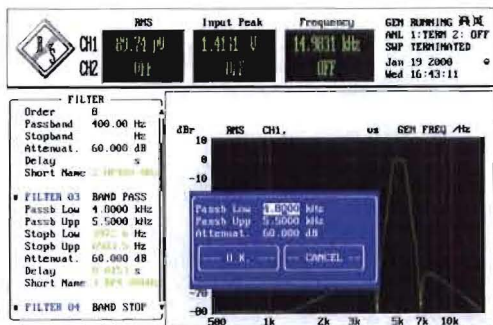


Fig. 7: Filters can be defined by entering just a few parameters.

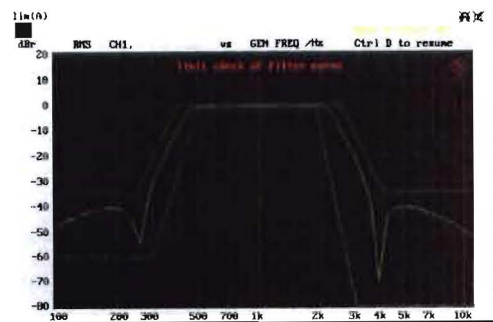


Fig. 8: Tolerance curves enable fast go/no-go tests.

Spectrum analysis

With its FFT analyzer, the R&S UPL is also capable of spectrum analysis. The number of samples for fast Fourier transform can be selected between 256 and 16k in binary steps (Fig. 5). A special feature is zoom FFT. The signal to be measured is digitally pre-processed to increase the frequency resolution by a factor of 2 to 128 over a selectable range. In this way, a maximum resolution of 0.05 Hz is attained. This is not merely a scale expansion, the measurement is actually performed at a higher resolution (Fig. 6).

Programmable filters

The filters of the R&S UPL are software-implemented, allowing the user to define any number of filters. The most common weighting filters are provided as standard. Additional filters can be programmed in a few seconds by entering the type (lowpass, highpass, bandpass, bandstop, notch, third octave or octave), frequency and attenuation (Fig. 7). The instrument's open architecture reveals its strength particularly where special requirements have to be met: special filters can be implemented by using commercial filter design programs. The data is transferred to the R&S UPL and the required filter is looped into the signal path.

A variety of sweep functions

For continuous variation of the test signals, the R&S UPL offers amplitude and frequency sweeps; in the case of bursts, it is also possible to perform sweeps of intervals and ON time. Sweeps are defined either by means of a table or via parameters such as start value, number of steps, linear/ log stepping or time interval. It is also possible to sweep two variables simultaneously.

If external signals are applied during measurement, they can be used for analyzer sweeps (external sweeps). Many different start conditions can be set, allowing measurements to be triggered by a variety of events. Even if the DUT has an unknown or unstable transient response, the settling function will yield stable results.

Multichannel measurements with Audio Switcher R&S UPZ

The Audio Switcher R&S UPZ is used either to measure surround sound decoders or in production if several DUTs/channels have to be cabled. It is directly connected to the Audio Analyzer R&S UPL and panel-controlled via an RS-232-C interface. The 8-channel R&S UPZ is available as an input and output model and can be cascaded to up to 128 channels. *)



The Audio Switcher R&S UPZ can be controlled directly from the R&S UPL.

*) For more information, refer to data sheet PD 0757 6985, Multichannel audio measurements on surround sound decoders.

The strengths of the R&S UPL become evident especially in mobile use. The unit is compact and lightweight and requires no additional equipment. Results are stored in the built-in PC and thus available for later use. Routine measurements can be repeated easily using stored instrument settings.



- ◆ Built-in hard disk and disk drive
- ◆ Connectors for keyboard, mouse, monitor, printer and plotter
- ◆ Centronics interface for connecting printer or network
- ◆ Drivers for commercial printers supplied as standard
- ◆ Remote control via IEC/IEEE bus or RS-232-C interface
- ◆ Postprocessing of results directly in the R&S UPL using standard software
- ◆ All results available in the common data formats, making it easy to import graphics into documents, for example
- ◆ Easy loading of function and software extensions via floppy disk
- ◆ Automatic test sequences and measurement programs with universal sequence controller, plus easy generation of programs with built-in program generator

Everything in one package

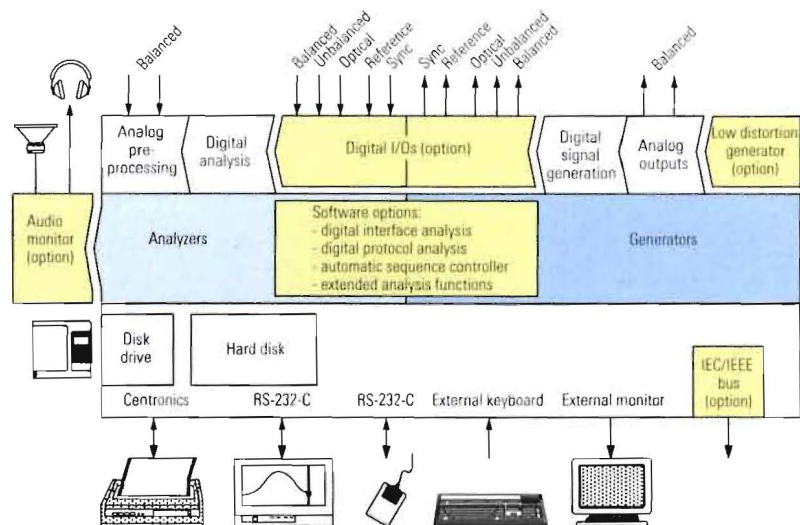
The Audio Analyzer R&S UPL is a compact unit with an integrated controller. It avoids the disadvantages of external PC control found in other audio analyzers. The instrument is easy to transport as it requires no external equipment such as keyboard, monitor or other PC peripherals.

The R&S UPL is supplied ready for use. Installation merely consists of unpacking the unit and switching it on to start the measurement. The user is not burdened with problems that cropped up in the past with the installation of interface cards or PC software.

With audio analyzers controlled from an external PC, interference may be radiated from the PC, the monitor or interface connections, which distorts measurement results. Not so with the R&S UPL: the instrument has specified EMC characteristics which also include the internal PC. In contrast to conventional PCs, the R&S UPL provides elaborate screening features such as magnetically shielded power transformers and a coated filter pane in front of the display.

And the icing on the cake: the price of the R&S UPL includes the internal PC.

Block diagram of R&S UPL.



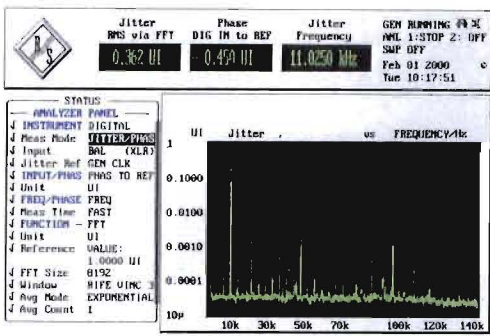


Fig. 9: Individual interference components can easily be found with the aid of the jitter spectrum.

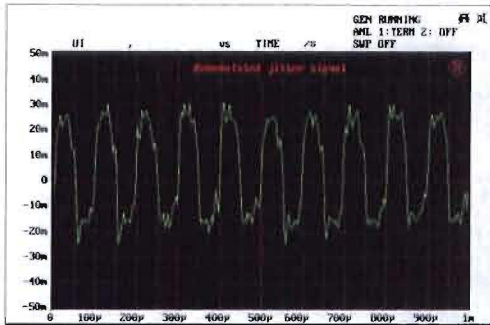


Fig. 10: Display of jitter signal in time domain.

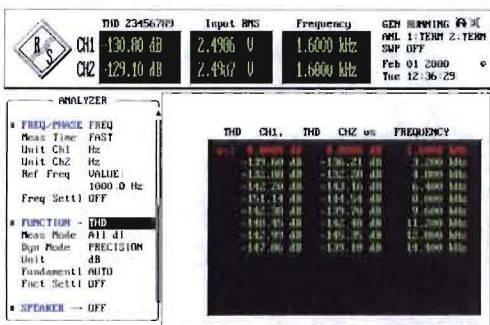


Fig. 11: Complete measured-value tables can be output for all functions.

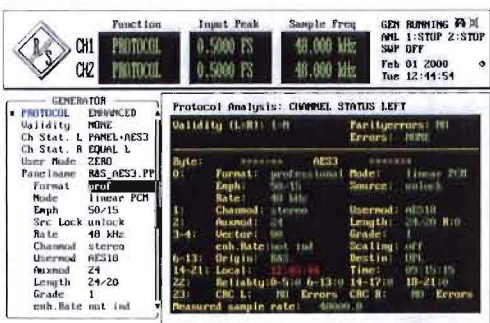


Fig. 12: The R&S UPL generates and analyzes additional data in digital data streams in line with all common standards. The data is represented in binary form, as hexadecimal numbers, or as ASCII characters, or it is evaluated in consumer or professional format.

Interfaces, protocol analysis, jitter

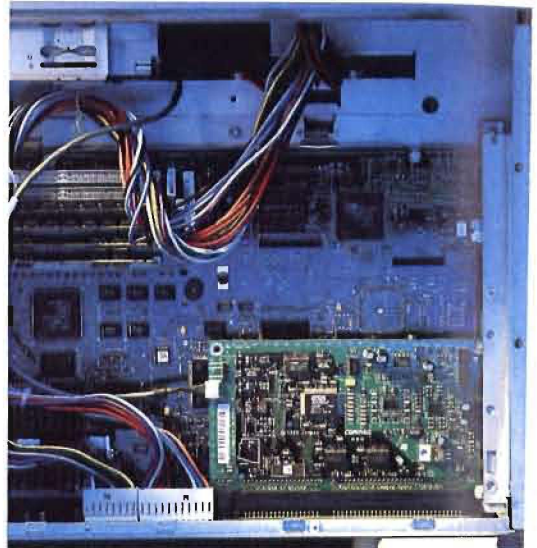
Analog interfaces

- Balanced inputs with high common-mode rejection and various types of impedance commonly used in the studio. Measurements can be made on lines with phantom feed.
- Balanced outputs, floating (e.g. to prevent hum loops).
- The generator outputs can be internally connected to the analyzer inputs so that different types of measurement can be performed without changing the cabling.

Digital audio interfaces (options R&S UPL-B2 and R&S UPL-B29)

- Balanced (XLR), unbalanced (BNC) and optical (TOSLINK) inputs and outputs for connecting consumer electronics and professional studio equipment are provided
- The levels of the balanced and unbalanced outputs are adjustable so that the sensitivity of digital audio inputs can be determined.
- The format of the generated channel status data may be professional or consumer regardless of the selected interface.
- A reference (XLR) and a synchronization (BNC) input provided on the rear panel allow both the analyzer and the generator to be synchronized to the digital audio reference signal (DARS) in line with AES 11; in addition the generator can be synchronized to wordclock, video sync signals (PAL/SECAM/NTSC) and 1024 kHz reference clocks.
- Both generator and analyzer can be operated at clock rates of 35 kHz to 106 kHz. The clock signal can also be produced internally by the generator.
- The clock rates of the analyzer and generator are independent of each other. This allows measurements on sample rate converters.

- The word length can be selected independently for generator and analyzer between 8 and 24 bits.



Improvement of audio quality of sound cards and multimedia equipment – a task for the R&S UPL.

Digital protocol analysis and generation (option R&S UPL-B21)

This software option extends the functions of options R&S UPL-B2 and R&S UPL-B29 by an in-depth analysis and generation of additional digital data:

- Analysis of channel status and user data. The data is output in binary form, as hexadecimal numbers, or as ASCII characters, or, in the case of channel status data, it is evaluated in the professional or consumer format in line with AES 3 or IEC 958 (Fig. 12).

- ◆ Generation of channel status data, user data and validity bits. Channel status data can be entered in binary form or via panel in line with AES 3 or IEC 958 using the professional or consumer format.
- ◆ Any bits can be combined under a symbolic name. In this way, data input and representation can easily be adapted to customer requirements.
- ◆ Simultaneous measurement of clock rate and display of interface errors (such as parity error).

Jitter and Interface Tests (option R&S UPL-B22)

The physical parameters of digital audio interfaces can be evaluated with this option. The R&S UPL-B22 extends the functions of options R&S UPL-B2 and R&S UPL-B29.

Signal analysis:

- ◆ Measurement of jitter amplitude and display of jitter signal in the frequency and time domain (Figs 9 and 10).
- ◆ The R&S UPL generates bit- or word-synchronous sync signals that allow the accurate display of digital audio signals on an oscilloscope (preamble, eye pattern, signal symmetry, superimposed noise, etc).
- ◆ Measurement of input pulse amplitude and sampling frequency.
- ◆ Measurement of phase difference between audio and reference input signal.
- ◆ Measurement of time difference between output and input signal. This allows delay times of equalizers, audio mixers, etc to be measured.
- ◆ Analysis of common-mode signal of balanced input (frequency, amplitude, spectrum).

Digital components of various data formats and clock rates are the stock-in-trade of professional users, who need a measuring instrument offering top performance on all interfaces with high accuracy and over a wide dynamic range. Operation is identical for analog and digital interfaces, which enhances operator convenience. Fast fault diagnosis is possible by means of stored test routines, allowing the elimination of problems immediately before transmission.



Signal generation:

- ◆ The clock of the output signal can be "jittered" by superimposing a sine-wave or noise signal of variable amplitude.
- ◆ When generating digital audio data – with option R&S UPL-B1 installed – jitter and common-mode interference can be added to the data stream.
- ◆ An input signal with jitter can be output jitter-free.
- ◆ A common-mode signal can be superimposed on the balanced output signal.
- ◆ Long cables can be simulated by means of a switchable cable simulator.
- ◆ The phase shift between the digital audio output and the reference output can be varied.

Generation of coded audio signals (option R&S UPL-B23)

With this option, the Audio Analyzer R&S UPL is able to generate AC-3-coded test signals (other data formats soon available) directly with the integrated generator, e.g. to measure surround sound decoders.

The number of channels, frequency or level sweep, start and stop frequency/level as well as the number of sweep points can be set, thus allowing flexible test sequence combinations.

The measurements are automatically synchronized between generator and analyzer.

The R&S UPL-B23 requires options R&S UPL-B2 or R&S UPL-B29. For more information refer to data sheet PD 0757.6985, Multichannel audio measurements on surround sound decoders.

Designed for convenience

Efficient online help

The R&S UPL offers a variety of help features:

HELP function

HELP information in German or English can be called up for each input field.

SHOW I/O key

If results cannot be displayed, e.g. because an input signal is either missing or incorrect, information on possible causes will appear upon pressing SHOW I/O.

Moreover, the input and output configuration will be displayed.

Info boxes

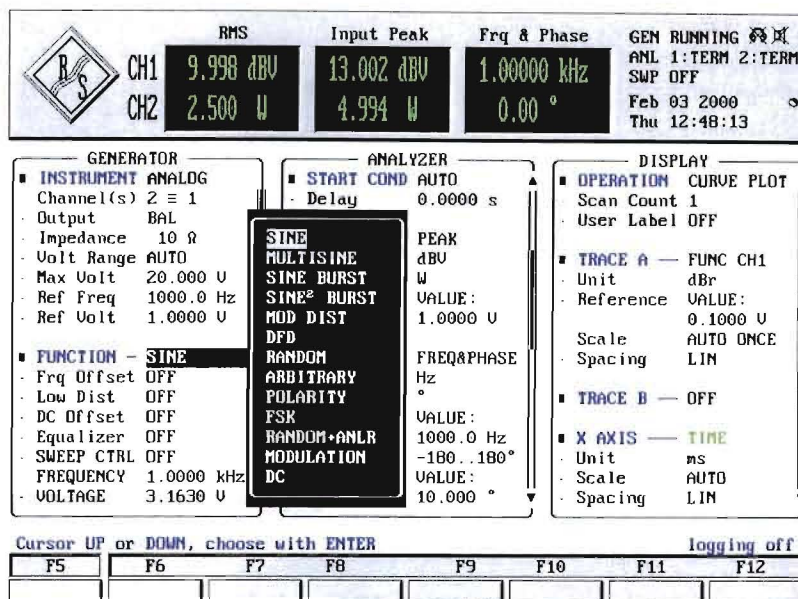
These highlighted boxes indicate any incorrect settings.

Online help

The permissible range of values is indicated for each menu item requiring the entry of a numeric value. This range takes into account any limitations resulting from related parameters, e.g. the sample rate in the case of measurements on digital interfaces.

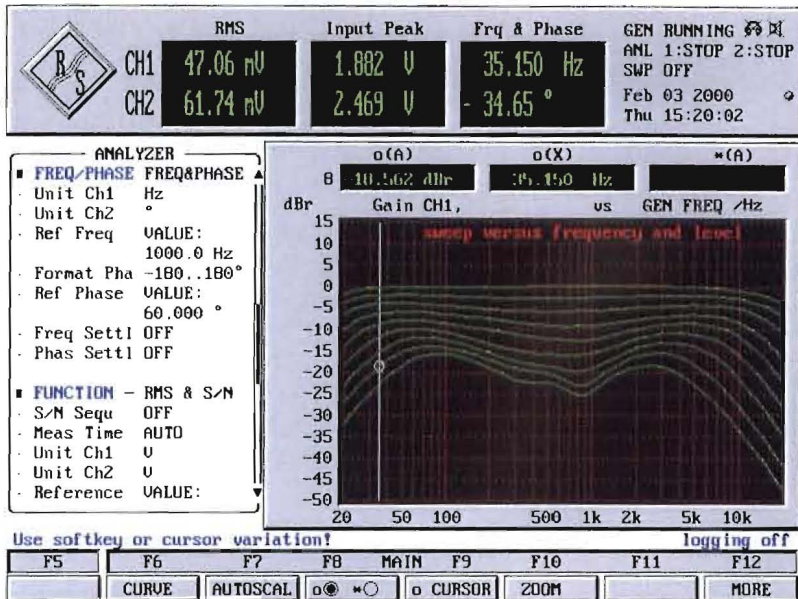
Protection against invalid entries

The R&S UPL will not accept entries outside the permissible range. An alarm tone will be issued and the value changed to the permissible minimum or maximum value.



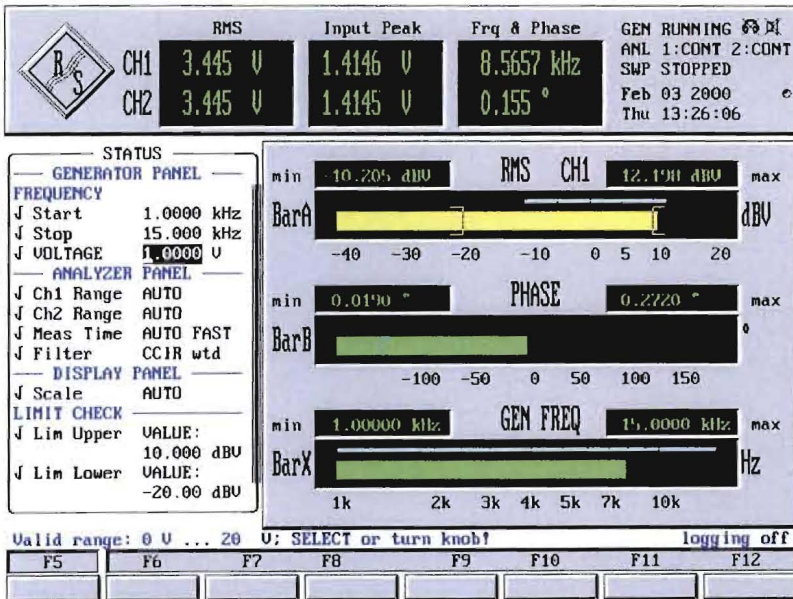
A wealth of functions – yet easy to operate

- ◆ Related functions and settings are combined in panels that can be called up at a keystroke. Up to three panels can be displayed at a time.
- ◆ The operator is not burdened with unnecessary information. Only the parameters and settings needed for a specific application are displayed – the others are available in the background. (For example, the sweep parameters are transferred to the generator panel and displayed only when the sweep function is activated.)
- ◆ Fast access to frequently used instrument setups and a comprehensive library of standard measurements make the instrument easy to learn.
- ◆ Straightforward data entry: the user simply needs to open a menu and make an entry or selection.
- ◆ Continuously updated status information on generator, analyzer and sweep.
- ◆ Quick operating sequences through the use of softkeys, e.g. for graphical representations.
- ◆ The user can choose between operation via mouse, external keyboard or front panel. This choice is important since the working space required by a mouse is not always available.
- ◆ Short learning time due to an easy-to-understand operating concept that treats analog and digital measurements in the same manner.



Results at a glance

- ◆ Realtime display of results for one or both channels and several test functions.
- ◆ Simultaneous display of frequency and phase.
- ◆ With graphics, results can be read off with vertical and horizontal cursors. Tolerance curves or stored results can be added for comparison.
- ◆ Sets of traces can be displayed, stored and evaluated for both channels.
- ◆ Graphics options include traces and bargraphs, spectrum display, and three-dimensional waterfalls.



In many cases only a few parameters need to be modified after a measurement sequence has been started. Therefore, entry lines can be selected from the input panels for the generator, analyzer, etc. by means of a checkmark. They are then transferred to a status panel. The status panel thus gives a summary of parameters for a measurement routine, which offers the following advantages:

- ◆ Instrument settings can be displayed together with graphical and numerical results.
- ◆ All important information can be printed on a single hardcopy.
- ◆ Instrument settings can be modified quickly without changing panels as the R&S UPL can also be operated from the status panel.

High measurement speed

In designing the Audio Analyzer R&S UPL, particular emphasis was placed on optimizing the measurement speed of the test system as a whole:

- ◆ All operations involving extensive number crunching are carried out by digital signal processors. The PC is merely used for controlling the unit and displaying results.
- ◆ The R&S UPL can perform even complex test functions simultaneously on both channels. This feature alone reduces the time for stereo measurements by 50% compared to most analyzers available on the market.
- ◆ The digital test routines adapt their speed optimally to the input frequency. This enhances measurement speed especially in the case of frequency sweeps.
- ◆ The R&S UPL performs harmonic distortion and IMD measurements using patented, digital test procedures that combine high accuracy with high measurement speed.
- ◆ Digital signal processing reduces setting and transient times achievable with purely analog instruments. These times are also taken into account in the test routines, yielding stable measurements without the need for activating settling functions (these are understood to be repeated measurements until results are within a tolerance band).

- ◆ The user interface was tailored to the requirements of a test environment, not an office one.
- ◆ Display windows not needed can be switched off, which also reduces the processing time. When all displays are switched off and results are output via the IEC/IEEE bus, more than 100 level measurements per second can be performed.

Use in production

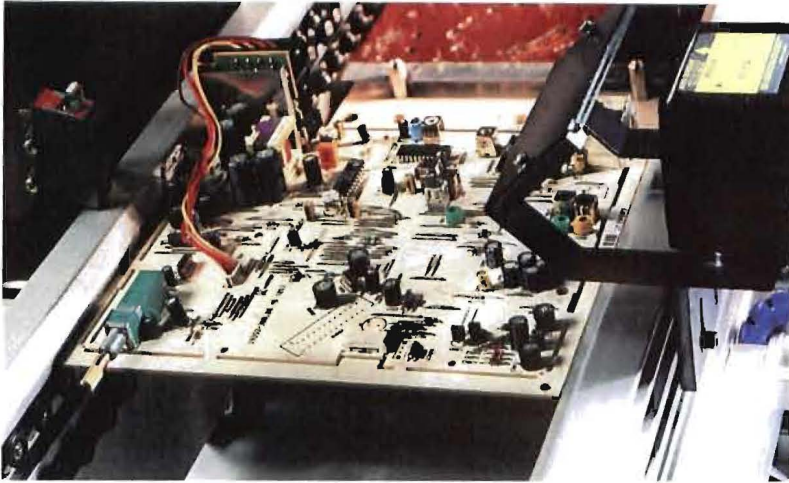
Instruments to be used in production tests must satisfy a variety of requirements:

- ◆ High measurement speed is vital for achieving a high production throughput. By making appropriate use of the instrument functions, go/no-go decisions can already be made in the audio analyzer, thus reducing the run time of a DUT (Fig. 8).

- ◆ Two-channel measurements allow the simultaneous and thus time-saving determination of input and output characteristics.
- ◆ The use of FFT analysis provides a decisive advantage especially in the case of frequency response measurements, which are particularly time-critical (example: approx. 900 frequency values in 150 ms).
- ◆ Long calibration intervals, resulting from the extensive use of digital circuits, make for high availability of the instrument.
- ◆ The R&S UPL66 model is specially tailored to the requirements of production. It comes without a display and keypad, thus holding down costs. Yet the unit can be operated manually by connecting a PC keyboard and a VGA monitor, enabling fast fault localization in the event of production problems.

The R&S UPL 66 – special model for use in test systems, with the full flexibility of the standard model.





High measurement speed, two-channel measurements and remote-control capability via the IEC/IEEE bus are a must in production systems. The long calibration intervals of the R&S UPL make for high availability and reduce costs.

◆ Remote-control capability via the IEC/IEEE bus is a must in large-scale production systems. In the design of the Audio Analyzer R&S UPL, special importance was attached to data transfer via the IEC/IEEE bus. The logging mode can be used to speed up the generation of control programs for the IEC/IEEE bus. With the program generator provided in the R&S UPL-B10, it is no longer necessary to look up IEC/IEEE bus commands.

Universal Sequence Controller R&S UPL-B10

The R&S UPL-B10 is used to generate and execute measurement sequences, thus turning the R&S UPL into an automatic test system.

Measurement sequence programming is greatly facilitated by the built-in program generator: Each manual control step is recorded in the logging mode and translated into a complete line of the sequence program with correct syntax, i.e. test sequences can be programmed without the user typing a single line. The generated program does not just specify the sequence of keys to be pressed but contains the instructions in easy-to-read IEC/IEEE bus syntax according to SCPI.

BASIC commands can then be used to modify the program, e.g. for branching or graphic outputs.

Complete application programs based on the universal sequence controller are available for measurements on CD players, tuners, etc.

The universal sequence controller can also be used for remote control of external equipment via the IEC/IEEE bus or the RS-232-C interface. Moreover, programs generated on the R&S UPL can be transferred to an external controller after slight modifications for the remote control of the R&S UPL. This greatly facilitates the generation of remote-control programs.



Test assemblies for electroacoustic converters frequently consist of microphones and loudspeakers, whose frequency response must be compensated. The equalizer function of the R&S UPL furnishes tailor-made solutions for such tests. Comprehensive test routines can be implemented with the aid of the universal sequence controller.

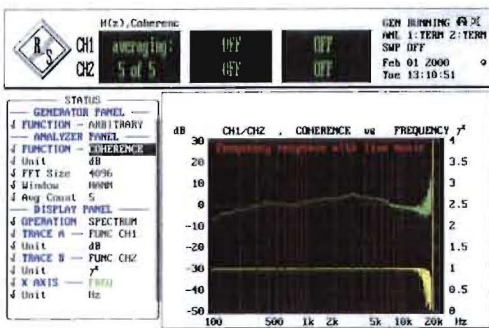


Fig. 13: Transfer and coherence function for determining the transfer characteristic with the aid of complex test signals (e.g. music or voice).

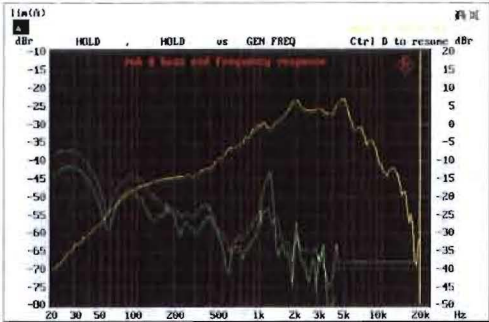


Fig. 14: Frequency response and rub & buzz function for quality assurance in loudspeaker production.

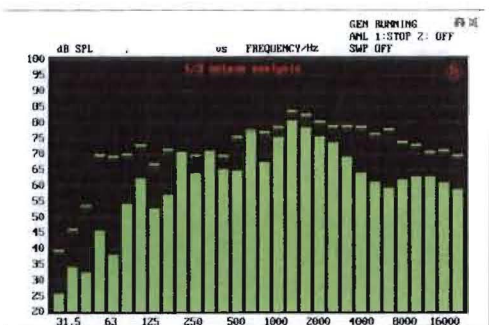


Fig. 15: Third-octave analysis used mainly in acoustics.

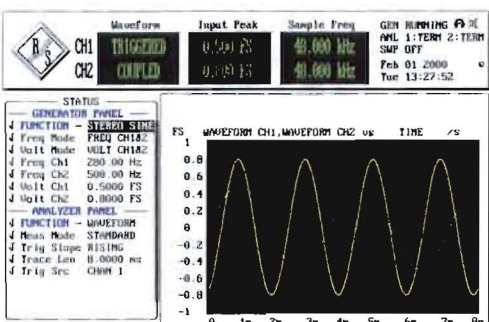


Fig. 16: Different signals for both channels may be generated at the digital audio outputs.

Options and further applications

Low Distortion Generator R&S UPL-B1

This option is essential for all applications requiring extremely pure analog signals or an extended frequency range up to 110 kHz.

When digital audio data is produced by the universal generator, the low distortion generator may generate an analog signal or be used for superimposing jitter or common-mode interference

Digital Interfaces R&S UPL-B2/-B29

These options contain the digital audio interfaces (balanced, unbalanced and optical) for the standard sampling rates 44.1 kHz and 48 kHz, and the R&S UPL-B29 also covers the extended rates up to 96 kHz. Either the R&S UPL-B2 or the R&S UPL-B29 can be installed. A detailed description of these options and their software extensions (Digital Audio Protocol R&S UPL-B21, Jitter and Interface Tester R&S UPL-B22 as well as the Coded Audio Signal Generation R&S UPL-B23) can be found on pages 8 and 9.

Audio Monitor R&S UPL-B5

This option adds a headphone output and a built-in loudspeaker to the R&S UPL. The input signal and – in the case of level, THD+N and rub & buzz measurements – the filtered or weighted signal can be monitored.

Extended Analysis Functions R&S UPL-B6

In modern audio systems, the transfer characteristics are dynamically adapted to the input signals. When conventional, static test signals are used as input signals, the dynamic processes are not activated and thus the signals cannot be analyzed. The **coherence and transfer functions** are the solution to this problem:

speech, music, noise, etc. are used as test signals, and the transfer characteristic is represented by analyzing the output spectrum referenced to the input spectrum (Fig. 13). The required complex test signals stored in various formats can be directly called from the R&S UPL hard disk.

With the **rub & buzz measurement**, manufacturing defects of loudspeakers can be found in no time by measuring the unwanted signals in the frequency range above that of typical distortion products (Fig. 14).

The **third-octave analysis** is an important measurement in acoustics. The levels of up to 32 third-octave bands are simultaneously measured in compliance with class 0 of IEC 1260 (Fig. 15).

In multitone signal generation, the R&S UPL-B6 also allows the phase and crest factor to be set. The R&S UPL-B6 is also required for generating two-channel sine-wave signals at the digital outputs (Fig. 16).

Further functional extensions of the R&S UPL-B6 are currently being developed.

Hearing Aids Test Accessories R&S UPL-B7

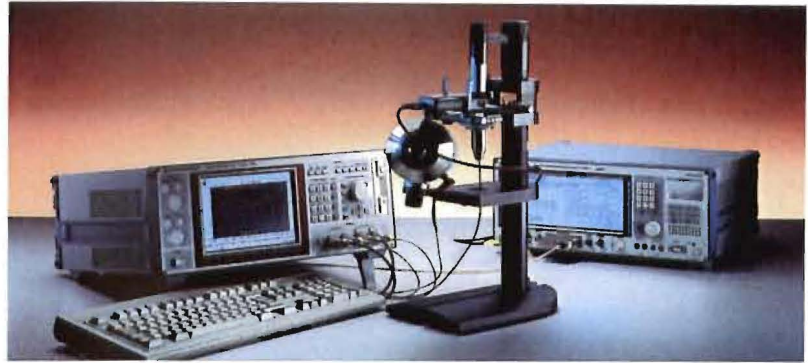
The Audio Analyzer R&S UPL with the option R&S UPL-B7 forms a complete test system for all standard measurements on hearing aids. The R&S UPL merely needs to be equipped with options R&S UPL-B5 and R&S UPL-B10. The R&S UPL-B7 includes an acoustic test chamber as well as all accessories required for measurements on hearing aids such as battery adapters, connecting cables and acoustic

couplers. The associated software enables complete measurements in accordance with IEC60118 or ANSI S3.22. *)

Acoustic measurements on GSM mobile phones with the R&S UPL 16 or option R&S UPL-B8/-B9

The acoustic transmission and reproduction quality of a mobile phone is the most important characteristic in everyday use. The **Audio Analyzer R&S UPL16** was developed for conformance tests on GSM mobiles. It performs all audio measurements in line with chapter 30 of GSM 11.10 and 3GPP TS 51.010 Release 99, phase 2. Access to the internal digital signals of special test mobile phones is via the standard digital audio interface (DAI).

Network operators, consumer test institutes, etc. are particularly interested in measuring and comparing acoustic char-



acteristics of commercial mobiles. A highly accurate test method is also required for quality assurance and sampling inspection in the production of mobile phones.

The **Mobile Phone Test Set R&S UPL-B8** is available for these applications. With the aid of this option all necessary audio measurements can be performed on GSM mobile phones without the DAI interface. The **3G Mobile Phone Tests R&S UPL-B9** provide the same functionality, but expanded to 3G mobile phones and to the latest 3GPP specifications TS26.131 and 132. These tests are validated and can therefore be used for type approvals. R&S UPL-B8 and -B9 require options R&S UPL-B6 and -B10. For further information refer to data sheet PD 0757.5889, Acoustic Test of GSM Mobiles

The **Automatic Audio Line Measurement to ITU-T 0.33, R&S UPL-B33** performs automatic measurements of all relevant parameters of broadcast links according to ITU-T 0.33. The generator and analyzer are normally located at different sites. Operators may utilize the standard sequences defined by ITU-T 0.33 or prepare their own. Option R&S UPL-B10 is needed for the use of the R&S UPL-B33.

The **Remote Control R&S UPL-B4** enables remote control of R&S UPL via the RS-232-C interface or IEC625/IEEE488 interface. The commands largely meet SCPI standards.

The **Universal Sequence Controller R&S UPL-B10** allows measurement sequences to be generated and executed. For detailed information see page 13

With option **LAN Interface R&S UPL-B11**, the Audio Analyzer R&S UPL can be connected to Novell networks in line with 10/100 BASE-T standard in order, for example, to exchange data or access the network printer (not for R&S UPL16).

The **150 Ω Modification R&S UPL-U3** changes the source impedance of the analog generator from 200 Ω to 150 Ω .

*) For further information on this application refer to data sheet PD 0757.2696, Test System R&S UPL + R&S UPL-B7 for Hearing Aids.



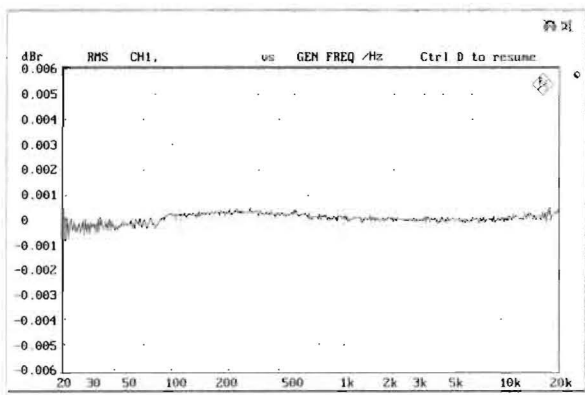
Measurements on hearing aids.

Specifications

Analog analyzers

For analog measurements two analyzers with different bandwidths, specifications and measurement functions are available:

Analyzer	Frequency range
ANLG 22 kHz	DC/10 Hz to 21.90 kHz ¹⁾
ANLG 110 kHz	DC/20 Hz to 110 kHz ¹⁾
Level measurements (rms)	
Accuracy at 1 kHz	±0.05 dB
Frequency response (ref. to 1 kHz)	
20 Hz to 22 kHz	±0.03 dB, typ. 0.003 dB ($V_{in} < 3$ V)
10 Hz to 20 Hz	±0.1 dB
22 kHz to 50 kHz	±0.1 dB
50 kHz to 110 kHz	±0.2 dB
Inputs	
XLR connectors	2 channels, balanced (unbalanced measurements possible with XLR/BNC Adapter R&S UPL-Z1), floating/grounded and AC/DC coupling switchable
Voltage range	0.1 μV to 110 V (rms, sine)
Measurement ranges	18 mV to 100 V, in steps of 5 dB
Input impedance	100 kΩ ±1% shunted by 120 pF, each pin against ground
Crosstalk attenuation	300 Ω, 600 Ω ±0.5% each, P_{max} 1 W
Common-mode rejection ($V_{in} < 3$ V)	>120 dB, frequency <22 kHz, 600 Ω >100 dB at 50 Hz, >86 dB at 1 kHz, >80 dB at 16 kHz each input channel switchable to the other output channel, input impedance: balanced 200 kΩ, unbalanced 100 kΩ
Generator output	



Typical frequency response, measured with internal generator/analyzer at analog interfaces

Measurement functions

RMS value, wideband

Accuracy	
Measurement speed	
AUTO	±0.05 dB at 1 kHz, sine
AUTO FAST	±0.1 dB additional error
Integration time	
AUTO FAST/AUTO	4.2 ms/42 ms, at least 1 cycle
VALUE	1 ms to 10 s
GEN TRACK	2.1 ms, at least 1 cycle
Noise (600 Ω)	
with A filter	1 μV
with CCIR unweighting filter	<2 μV, 1.6 μV typ. (ANLG 22 kHz)

¹⁾ DC/AC coupling.

Filter	weighting filters and user-definable filters, up to 3 filters can be combined, analog notch filter in addition (expansion of dynamic range by up to 30 dB) post-FFT of filtered signal
Spectrum	
RMS value, selective	
Bandwidth (-0.1 dB)	1%, 3%, 1/12 octave, 1/3 octave and user-selectable fixed bandwidth, minimum bandwidth 20 Hz
Selectivity	100 dB (80 dB) with analyzer ANLG 22 kHz (110 kHz) bandpass or bandstop filter, 8th order elliptical filter, analog notch filter in addition
Frequency setting	- automatic to input signal - coupled to generator - fixed through entered value - sweep in selectable range
Accuracy	±0.2 dB + ripple of filters
Peak value	
Measurement	with analyzer ANLG 22 kHz only peak max, peak min, peak-to-peak, peak absolute
Accuracy	±0.2 dB at 1 kHz
Interval	20 ms to 10 s
Filter ²⁾	weighting filters and user-definable filters, up to 3 filters can be combined
Quasi-peak	
Measurement, accuracy	with analyzer ANLG 22 kHz only to CCIR 468-4
Noise (600 Ω)	<8 μV with CCIR weighting filter
Filter ²⁾	weighting filters and user-definable filters, up to 3 filters can be combined, analog notch filter in addition
DC voltage	
Voltage range	0 V to ±110 V
Accuracy	±(1% of measured value + 0.1% of measurement range)
Measurement ranges	100 mV to 100 V, in steps of 10 dB
S/N measurement routine	
	available for measurement functions
	- rms, wideband
	- peak
	- quasi-peak
	indication of S/N ratio in dB, no post-FFT
FFT analysis	see FFT analyzer section
Total harmonic distortion (THD)	
Fundamental	10 Hz to 22 kHz
Frequency tuning	automatic to input or generator signal or fixed through entered value
Weighted harmonics	any combination of d_2 to d_9 , up to 110 kHz
Accuracy	
Harmonics	<50 kHz ±0.5 dB
	<110 kHz ±0.7 dB
Inherent distortion ³⁾⁴⁾	
Analyzer ANLG 22 kHz	
Fundamental	20 Hz to 10.95 kHz <-110 dB, typ. -115 dB
	10 Hz to 20 Hz <-100 dB
Analyzer ANLG 110 kHz	
Fundamental	50 Hz to 20 kHz <-100 dB, typ. -105 dB
Spectrum	bar chart showing signal and distortion
THD+N and SINAD	
Fundamental	10 Hz to 22 kHz
Frequency tuning	automatic to input or generator signal or fixed through entered value
Input voltage	typ. >100 μV with automatic tuning
Bandwidth	upper and lower frequency limit selectable, one weighting filter in addition

²⁾ With R&S UPL-B29 only in base rate mode

³⁾ Total inherent distortion of analyzer and generator (with option R&S UPL-B1), analyzer with dynamic mode precision

⁴⁾ >3.5 V, typ. 3 dB less; <0.5 V, sensitivity reduced by inherent noise (typ. 0.25/1.25 μV with analyzers 22/110 kHz)

Accuracy		
Bandwidth	<50 kHz <100 kHz	± 0.5 dB ± 0.7 dB
Inherent distortion ¹⁾		
Analyzer ANLG 22 kHz		
Bandwidth	20 Hz to 21.90 kHz	typ. -110 dB at 1 kHz, 2.5 V < -105 dB + 2 μ V ²⁾ typ. -108 dB + 1.5 μ V
Analyzer ANLG 110 kHz		
Bandwidth	20 Hz to 22 kHz 20 Hz to 110 kHz	< -95 dB + 2.5 μ V, typ. -100 dB + 1.75 μ V < -88 dB + 5 μ V, typ. -95 dB + 3.5 μ V post-FFT of filtered signal
Spectrum		
Modulation factor (MOD DIST)		
Measurement method		selective to DIN IEC 268-3
Frequency range		lower frequency 30 Hz to 2700 Hz upper frequency 8 x LF to 100 kHz ³⁾ ± 0.50 dB
Accuracy		
Inherent distortion ⁴⁾		
Upper frequency	4 kHz to 15 kHz 15 kHz to 20 kHz	< -96 dB (-90 dB), typ. -103 dB < -96 dB (-85 dB)
Spectrum		bar chart showing signal and distortion
Difference frequency distortion (DFD)		
Measurement method		selective to DIN IEC 268-3 or 118
Frequency range		difference frequency 80 Hz to 2 kHz center frequency 200 Hz to 100 kHz ⁵⁾ ± 0.50 dB, center frequency < 20 kHz < -112 dB, typ. -125 dB < -96 dB, typ. -105 dB
Accuracy		
Inherent distortion ⁶⁾	DFD d ₁ DFD d ₂	
Spectrum		bar chart showing signal and distortion
Wow and flutter		
Measurement method		with analyzer ANLG 22 kHz only DIN/IEC, NAB, JIS, 2-sigma to IEC-386
Weighting filter	OFF ON	highpass 0.5 Hz, bandwidth 200 Hz bandpass 4 Hz to IEC-386
Accuracy		$\pm 3\%$
Inherent noise		$< 0.0005\%$ weighted $< 0.001\%$ unweighted post-FFT of demodulated signal
Spectrum		
Time domain display (WAVEFORM)		
Trigger		rising/falling edge
Trigger level		-200 V to $+200$ V, interpolated between samples
Trace length		max. 7424 points
Standard mode		1- to 32-fold interpolation
Compressed mode		2- to 1024-fold compression (envelope for AGC measurement), with analyzer ANLG 22 kHz only
Frequency ⁷⁾		
Frequency range		20 Hz to 110 kHz
Accuracy		± 50 ppm
Phase ⁷⁾		
Frequency range		with analyzer 22 kHz only 20 Hz to 20 kHz
Accuracy		$\pm 0.5^\circ$
Group delay ⁷⁾		
Frequency range		with analyzer 22 kHz only 20 Hz to 20 kHz
Accuracy in seconds		$\Delta\phi / (\Delta f \times 360)$, where $\Delta\phi$ = phase accu- racy in $^\circ$, Δf = frequency step

¹⁾ Total inherent distortion of analyzer and generator (with option R&S UPL-B1), analyzer with dynamic mode precision

²⁾ At full-scale level of measurement range (< -100 dB + 2 μ V with auto range).
 < -100 dB for input voltage > 3.5 V

³⁾ For upper frequency > 20 kHz, the bottom limit of lower frequency is reduced

⁴⁾ Input voltage > 200 mV, typical values apply between 0.5 V and 3.5 V
Lower frequency > 200 Hz, values in () for lower frequency < 200 Hz
Dynamic mode precision, level ratio LF:HF = 4:1

⁵⁾ For center frequencies > 20 kHz the bottom limit of the difference frequency is reduced

⁶⁾ Input voltage > 200 mV, typical values apply between 0.5 V and 3.5 V,
dynamic mode precision (at DFD d2), center frequency 7 kHz to 20 kHz

⁷⁾ With measurement functions RMS, FFT and THD+N only, accuracy applies to 8x FFT with zoom factor 2, Rife-Vincent-2 window, S/N ratio > 70 dB

Polarity test	
Measurement	polarity of unsymmetrical input signal
Display	+POL, -POL

Analog generators

An 18-bit $\Delta\Sigma$ D/A converter is used for analog signal generation. The characteristics of the basic generator can be improved and extended with a low-distortion RC oscillator (Low Distortion Generator R&S UPL-B1):
– sine with reduced distortion
– frequency range up to 110 kHz

Outputs

XLR connectors, 2 channels, floating, balanced/unbalanced switchable, short-circuit-proof, max. current < 120 mA with external feed

Balanced

Voltage	0.1 mV to 20 V (rms, sine, open-circuit)
Crosstalk attenuation	> 115 dB, frequency < 20 kHz
Source impedance	typ. 10Ω , 200Ω (150Ω with R&S UPL U3) $\pm 0.5\%$, $600 \Omega \pm 0.5\%$
Load impedance	$> 400 \Omega$ (incl. source impedance)
Output balance	> 75 dB at 1 kHz, > 60 dB at 20 kHz

Unbalanced

Voltage	0.1 mV to 10 V (rms, sine, open-circuit)
Crosstalk attenuation	> 115 dB, frequency < 20 kHz
Source impedance	5Ω
Load impedance	$> 200 \Omega$

Signals

Sine

Frequency range	2 Hz to 21.75 kHz
Frequency accuracy	± 50 ppm
Level accuracy	± 0.1 dB at 1 kHz
Frequency response (ref. to 1 kHz)	
20 Hz to 20 kHz	± 0.05 dB
Inherent distortion THD+N	
Measurement bandwidth	
20 Hz to 22 kHz	< -94 dB, typ. -98 dB
20 Hz to 100 kHz	< -86 dB
Sweep parameters	frequency, level

Sine (with low distortion generator option)

Frequency range	10 Hz to 110 kHz
Frequency accuracy	$\pm 0.5\%$ at 15°C to 30°C $\pm 0.75\%$ at 5°C to 45°C ± 0.1 dB at 1 kHz
Level accuracy	
Frequency response (ref. to 1 kHz)	
20 Hz to 20 kHz	± 0.05 dB
10 Hz to 110 kHz	± 0.1 dB
Harmonics	typ. < -115 dB (< -120 dB at 1 kHz), measurement bandwidth 20 Hz to 20 kHz, voltage 1 V to 5 V

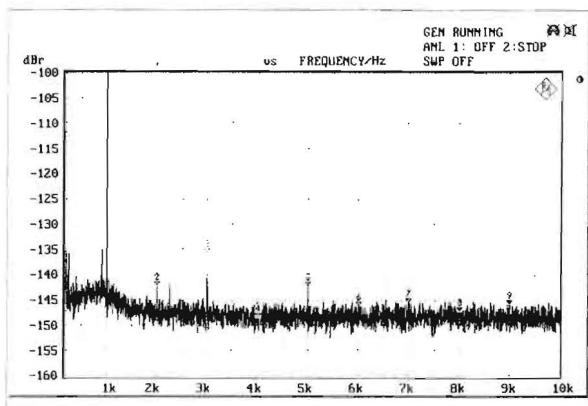
Inherent distortion (THD)

Fundamental 1 kHz, 1 V to 10 V	< -120 dB typ.
20 Hz to 7 kHz	< -105 dB
7 kHz to 20 kHz	< -100 dB

Inherent distortion (THD+N) ⁸⁾

Fundamental 1 kHz, 2.5 V	-110 dB typ.	Meas. bandw.
20 Hz to 20 kHz	< -100 dB + 2 μ V	22 kHz
20 Hz to 20 kHz	< -88 dB + 5 μ V	22 kHz
Sweep parameters	frequency, level	100 kHz

⁸⁾ Total inherent distortion of analyzer and generator, analyzer with dynamic mode precision



Typical spectrum of low distortion generator at 1 kHz, 1 V

MOD DIST

Frequency range	lower frequency upper frequency	for measuring the modulation distortion 30 Hz to 2700 Hz 8 x LF to 21.75 kHz
Level ratio (LF:UF)		selectable from 10:1 to 1:1
Level accuracy		±0.5 dB
Inherent distortion		< -94 dB (typ. -100 dB) at 7 kHz, 60 Hz < -84 dB (typ. -90 dB), level ratio LF:UF = 4.1
Sweep parameters		upper frequency, level

DFD

Frequency range	difference freq. center frequency	for measuring the difference tone 80 Hz to 2 kHz 200 Hz to 20.75 kHz
Level accuracy		±0.5 dB
Inherent distortion ¹⁾	DFD d ₁ DFD d ₂	< -114 dB, typ. -120 dB < -92 dB, typ. -100 dB
Sweep parameters		center frequency, level

Multi-sine

Frequency range		2.93 Hz to 21.75 kHz
Frequency spacing		adjustable from 2.93 Hz
Frequency resolution		< 0.01% or matching FFT frequency spacing
Dynamic range		100 dB, referred to total peak value
Characteristics		
Mode 1		1 to 17 spectral lines - level and frequency selectable for each line - phase of each component optimized for minimum crest factor - phase of each component or crest factor selectable (with R&S UPL-B6)
Mode 2		1 to 7400 spectral lines (noise in frequency domain), distribution: white, pink, 1/3 octave, defined by file; crest factor selectable (with R&S UPL-B6)

Sine burst, sine² burst

Burst time		1 sample up to 60 s, 1-sample resolution
Interval		burst time up to 60 s, 1-sample res.
Low level		0 to burst level, absolute or relative to burst level (0 with sine ² burst)
Bandwidth		21.75 kHz (elliptical filter)
Sweep parameters		burst frequency, level, time, interval

Noise

Distribution		Gaussian, triangular, rectangular
--------------	--	-----------------------------------

Arbitrary waveform

File format		loaded from file
*.TTF (internal)		memory depth max. 16 k
*.WAV ²⁾		reproduction of audio files (mono), duration approx. 10 s per Mbyte RAM
Clock rate		48 kHz
Bandwidth		21.75 kHz (elliptical filter)

¹⁾ Center frequency > 5 kHz, difference frequency < 1 kHz, DFD d₂ -100 dB (typ.) with DC offset

²⁾ With R&S UPL-B29 only in base rate mode

Polarity test signal

Sine² burst with following characteristics:

Frequency	1.2 kHz
ON time	1 cycle (0.8333 ms)
Interval	2 cycles (1.6667 ms)

FM signal

Carrier frequency	2 Hz to 21.75 kHz
Modulation frequency	1 mHz to 21.75 kHz
Modulation	0% to 100%

AM signal

Carrier frequency	2 Hz to 21.75 kHz
Modulation frequency	1 mHz to 21.75 kHz
Modulation	0% to 100%

DC voltage

Level range	0 V to ±10 V (±5 V unbalanced), sweep possible
Accuracy	±2%

DC offset³⁾

Accuracy	0 V to ±10.0 V (±5 V unbalanced) ±2%
Residual offset	< 1% of rms value of AC signal

Digital analyzer (option R&S UPL-B2 or -B29)

Frequency limits specified for measurement functions apply to a sampling rate of 48 kHz. For other sampling rates limits are calculated according to the formula:
 $f_{max} = f_{48kHz} \times \text{sampling rate}/48 \text{ kHz}$.

Inputs

Balanced input	XLR connector, transformer coupling
Impedance	110 Ω
Level (V _{rms})	min. 200 mV, max. 12 V
Unbalanced input	BNC, grounded
Impedance	75 Ω
Level (V _{rms})	min. 100 mV, max. 5 V
Optical input	TOSLINK
Channels	1, 2 or both
Audio bits	8 to 24
Clock rate	35 kHz to 55 kHz with R&S UPL-B2 or R&S UPL-B29 in base rate mode 35 kHz to 106 kHz with R&S UPL-B29 in high rate mode synchronous to DAI or DARS professional and consumer format to AES3 or IEC-958 as well as user-definable formats at all inputs
Format	

Measurement functions

All measurements at 24 bit, full scale

RMS value, wideband

Measurement bandwidth	up to 0.5 times the clock rate
Accuracy	
AUTO FAST	±0.1 dB
AUTO	±0.01 dB
FIX	±0.001 dB

Integration time

AUTO FAST/AUTO	4.2 ms/42 ms, at least 1 cycle
VALUE	1 ms to 10 s
GEN TRACK	2.1 ms, at least 1 cycle

Filter

weighting filters and user-definable filters, up to 3 filters can be combined post-FFT of filtered signal

Spectrum

RMS value, selective	
Bandwidth (-0.1 dB)	1%, 3%, 1/12 octave, 1/3 octave and user-selectable fixed bandwidth, min. bandwidth 20 Hz
Selectivity	100 dB, bandpass or bandstop filter, 8th order elliptical filter
Frequency setting	- automatic to input signal - coupled to generator - fixed through entered value - sweep in selectable range
Accuracy	±0.2 dB + ripple of filters
Peak value	
Measurement	peak max, peak min, peak-to-peak, peak absolute
Accuracy	±0.2 dB at 1 kHz
Interval	20 ms to 10 s
Filter ¹⁾	weighting filters and user-definable filters, up to 3 filters can be combined
Quasi-peak	
Measurement, accuracy	to CCIR 468-4
Filter ¹⁾	weighting filters and user-definable filters, up to 3 filters can be combined
DC voltage	
Measurement range	0 to ±FS
Accuracy	±1%
S/N measurement routine	
	available for measurement functions: - rms, wideband - peak, quasi-peak indication of S/N ratio in dB, no post-FFT see FFT analyzer section
FFT analysis	
Total harmonic distortion (THD)	
Fundamental	10 Hz to 21.90 kHz
Frequency tuning	automatic to input or generator signal or fixed through entered value
Weighted harmonics	any combination of d ₂ to d ₅ , up to 21.90 kHz
Accuracy	±0.1 dB
Inherent distortion ²⁾	
Fundamental	42 Hz to 21.90 kHz <-130 dB
24 Hz to 42 Hz	<-112 dB
12 Hz to 24 Hz	<-88 dB
Spectrum	bar chart showing signal and distortion
THD+N and SINAD	
Fundamental	10 Hz to 21.90 kHz
Frequency tuning	automatic to input or generator signal or fixed through entered value
Stopband range	fundamental ±28 Hz, max. up to 2nd harmonic
Bandwidth	upper and lower frequency limit selectable, one weighting filter in addition
Accuracy	±0.3 dB
Inherent distortion ²⁾	
Bandwidth	20 Hz to 21.90 kHz
Fundamental	28 Hz to 21.90 kHz <-126 dB
24 Hz to 28 Hz	<-109 dB
20 Hz to 24 Hz	<-96 dB
Spectrum	post-FFT of filtered signal
Modulation factor (MOD DIST)	
Measurement method	selective to DIN IEC 268-3
Frequency range	
Lower frequency	30 Hz to 2700 Hz ³⁾
Upper frequency	8 x LF ³⁾ to 21.25 kHz
Accuracy	±0.2 dB
Inherent distortion ²⁾	
Level LF:UF	1:1 <-133 dB
4:1	<-123 dB
10:1	<-115 dB
Spectrum	bar chart showing signal and distortion

¹⁾ With R&S UPL-B29 only in base rate mode.

²⁾ Total inherent distortion of analyzer and generator

³⁾ Fixed frequency, independent of sampling rate.

Difference frequency distortion (DFD)

Measurement method	selective to DIN IEC 268-3 or 118
Frequency range	
Difference frequency	80 Hz to 2 kHz ³⁾
Center frequency	200 Hz to 20.90 kHz
Accuracy	±0.2 dB
Inherent distortion ²⁾	DFD d ₂ <-130 dB
	DFD d ₃ <-130 dB
Spectrum	bar chart showing signal and distortion

Wow and flutter

Measurement method	DIN/IEC, NAB, JIS, 2-sigma to IEC-386
Weighting filter	OFF highpass 0.5 Hz, bandwidth 200 Hz
	ON bandpass 4 Hz to IEC-386

Accuracy	±3%
Inherent noise	<0.0003% weighted
	<0.0008% unweighted
Spectrum	post-FFT of demodulated signal

Time domain display (WAVEFORM)

Trigger	rising/falling edge
Trigger level	-1 FS to +1 FS, interpolated between samples
	max. 7424 points
Trace length	1- to 32-fold interpolation
Standard mode	32- to 1024-fold compression
Compressed mode	(envelope for AGC measurement)

Frequency⁴⁾

Frequency range	20 Hz to 20 kHz
Accuracy	±50 ppm

Phase⁴⁾

Frequency range	20 Hz to 20 kHz
Accuracy	±0.5°

Group delay⁴⁾

Frequency range	20 Hz to 20 kHz
Accuracy in seconds	$\Delta\phi/(\Delta f \times 360)$, where $\Delta\phi$ = phase accuracy in °, Δf = frequency step

Polarity test

Measurement	polarity of unsymmetrical input signal
Display	+POL, -POL

Digital generator (option R&S UPL-B2 or -B29)

Frequency limits specified for the signals apply to a sampling rate of 48 kHz. For other sampling rates limits are calculated according to the formula:
 $f_{\text{max}} = f_{48\text{kHz}} \times \text{sampling rate}/48\text{ kHz}$.

Outputs

Balanced output	XLR connector, transformer coupling
Impedance	110 Ω, short-circuit-proof
Level (V _{FF} into 110 Ω)	0 V to 8 V, in 240 steps
Accuracy	±1 dB (rms)
Unbalanced output	BNC, transformer coupling
Impedance	75 Ω, short-circuit-proof
Level (V _{FF} into 75 Ω)	0 V to 2 V, in 240 steps
Accuracy	±1 dB (rms)
Optical output	TOSLINK
Channels	1, 2 or both
Audio bits	8 to 24
Clock rate	35 kHz to 55 kHz with R&S UPL-B2 or R&S UPL-B29 in base rate mode
	35 kHz to 106 kHz with R&S UPL-B29 in high rate mode
	internal: generator clock or synchronization to analyzer
	external: synchronization to word clock input, video sync, DARS, 1024 kHz
Format	professional and consumer format to AES3 or IEC-958 as well as user-definable formats at all outputs

⁴⁾ Only for measurement functions RMS, FFT and THD+N, accuracy applies to 8k FFT with zoom factor 2, Rife-Vincent-2 window, S/N ratio >70 dB. Phase and group delay in high rate mode only with RMS without filter.

Signals

All signals with 24 bit, full scale

General characteristics

Level resolution	2 ⁻²⁴
Audio bits	8 to 24 bits, LSB rounded off for sine, stereo sine, DFD and MOD DIST in high rate mode for sine only
Dither	Gaussian, triangular, rectangular
Distribution Level	2 ⁻²⁴ FS to 1 FS
Frequency accuracy	±50 ppm (internal clock), ±1 ppm relative to clock rate
Frequency offset	for sine, stereo sine, DFD and MOD DIST
DC offset	0 or +1000 ppm 0 to ±1 FS adjustable

Sine

Frequency range	2 Hz ¹⁾ to 21.90 kHz
Total harmonic distortion (THD)	< -133 dB
Sweep parameters	frequency, level

MOD DIST

Frequency range	for measuring the modulation distortion
Lower frequency	30 ¹⁾ to 2700 Hz ¹⁾
Upper frequency	8 x LF ¹⁾ to 21.90 kHz
Level ratio (LF:UF)	selectable from 10:1 to 1:1
Inherent distortion ²⁾	
Level LF:UF	1:1 4:1 10:1
Sweep parameters	upper frequency, level

DFD

Frequency range	for measuring the difference tone
Difference frequency	80 Hz to 2 kHz ¹⁾
Center frequency	200 Hz ¹⁾ to 20.90 kHz
Inherent distortion ²⁾	
DFD d ₁	< -130 dB
DFD d ₂	< -130 dB
Sweep parameters	center frequency, level

Multi-sine

Frequency range	2.93 Hz to 21.90 kHz
Frequency spacing	adjustable from 2.93 Hz
Frequency resolution	< 0.01% or matching FFT frequency spacing
Dynamic range	> 133 dB

Characteristics

Mode 1	1 to 17 spectral lines - level and frequency selectable for each line - phase of each component optimized for minimum crest factor - phase of each component or crest factor selectable (with R&S UPL-B6)
Mode 2	1 to 7400 spectral lines (noise in frequency domain), distribution: white, pink, 1/3 octave, defined by file; crest factor selectable (with R&S UPL-B6)

Sine burst, sine² burst

Burst time	1 sample up to 60 s, 1-sample resolution
Interval	burst time up to 60 s, 1-sample res.
Low level	0 to burst level, absolute or referred to burst level (0 for sine ² burst)
Sweep parameters	burst frequency, level time, interval

Noise

Distribution	Gaussian, triangular, rectangular
--------------	-----------------------------------

Arbitrary waveform

File format	loaded from file
*.TTF (internal)	memory depth max. 16 k
*.WAV ³⁾	reproduction of audio files (mono), duration approx. 10 s per Mbyte RAM
Clock rate	sampling rate of generator

Polarity test signal

Sine ² burst with following characteristics:	
Frequency	1.2 kHz ¹⁾
ON time	1 cycle
Interval	2 cycles

FM signal

Carrier frequency	2 Hz ¹⁾ to 21.9 kHz
Modulation frequency	1 mHz ¹⁾ to 21.9 kHz
Modulation	0% to 100%

AM signal

Carrier frequency	2 Hz ¹⁾ to 21.9 kHz
Modulation frequency	1 mHz ¹⁾ to 21.9 kHz
Modulation	0% to 100%

DC voltage

Level range	0 to ±1 FS, can be swept
-------------	--------------------------

Digital audio protocol (option R&S UPL-B21)

Generator

Validity bit	NONE, L, R, L+R
Channel status data	mnemonic entry with user-definable masks, predefined masks for professional and consumer format to AES3 or IEC-958
User data	loaded from file (max. 384 bits) or set to zero

Analyzer

Display	validity bit L and R
Error indication	block errors, sequence errors, clock rate errors, preamble errors
Clock rate measurement	50 ppm
Channel status display	user-definable mnemonic display of data fields, predefined settings for professional and consumer format to AES3 or IEC-958, binary and hexadecimal format
User bit display	user-definable mnemonic display, block-synchronized

Jitter and interface test (option R&S UPL-B22)

Generator

Jitter injection	
Waveform	sine, noise
Frequency range	10 Hz to 21.75 kHz (sine to 110 kHz with option R&S UPL-B1)
Amplitude (peak-to-peak)	0 to 5 UI (corresp. to 0 to 800 ns at f _A = 48 kHz)
Common mode signal	for balanced output
Waveform	sine
Frequency range	20 Hz to 21.75 kHz (110 kHz with option R&S UPL-B1)
Amplitude (V _{pp})	0 V to 20 V
Phase (output to reference)	adjustable between -64 and +64 UI (corresp. to ±50% of frame)
Cable simulator	100 m typical audio cable

¹⁾ Fixed frequency, independent of sampling rate

²⁾ Total inherent distortion of analyzer and generator

³⁾ With R&S UPL-B29 only in base rate mode

Analyzer

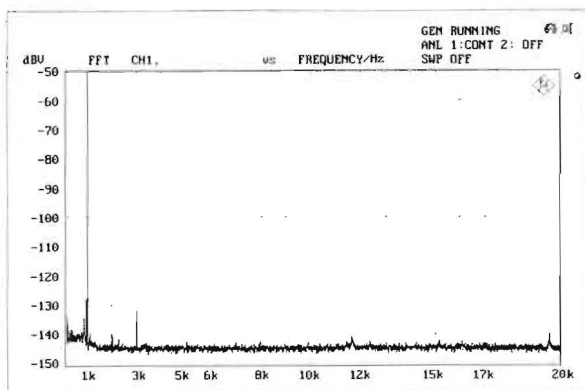
Input signal	
Amplitude (V_{pp})	0 V to 10 V
Clock rate	35 kHz to 55 kHz with R&S UPL-B2 35 kHz to 106 kHz with R&S UPL-B29
Jitter measurement	amplitude, frequency, spectrum 0 to 5 UI typ. for $f < 500$ Hz, decreasing to 0.5 UI for up to 50 kHz
Measurement limit	200 ps (noise floor with 8k FFT)
Reclocking	input signal sampled with low-jitter clock signal and available at reference output (XLR connector on rear) at balanced input
Common mode test	0 V to 30 V
Amplitude (V_{pp})	
Frequency, spectrum	20 Hz to 110 kHz
Phase (input to reference)	-64 to +64 UI (corresp. to $\pm 50\%$ of frame)
Delay (input to output)	100 μ s to 500 ms

Coded Audio Signal Generation (option R&S UPL-B23)

For specifications, refer to data sheet PD 0757 6985, Multichannel audio measurements on surround sound decoders".

FFT analyzer

Frequency range	
Digital 48/96 kHz	DC to 21 9/43 8 kHz
ANLG 22/110 kHz	DC to 21.9/110 kHz
Dynamic range	
Digital	>135 dB
ANLG 22 kHz	120 dB/105 dB ¹⁾
ANLG 110 kHz	115 dB/85 dB ¹⁾
Noise floor	
Digital	-160 dB
ANLG 22 kHz	-140 dB/110 dB ¹⁾
ANLG 110 kHz	-120 dB/90 dB ¹⁾
FFT size	256, 512, 1k, 2k, 4k, 8k points (16k with zoom factor 2)
Window functions	rectangular, Hann, Blackman-Harris, Rife-Vincent 1-3, Hamming, flat top, Kaiser ($\beta = 1$ to 20)
Resolution	from 0.05 Hz with zoom, from 5.86 Hz without zoom
Zoom	2 to 128 (2 to 16 mit ANLG 110)
Averaging	1 to 256, exponential or normal



Typical noise floor of FFT analysis at analog inputs

Filter

For all analog and digital analyzers. Up to 3 filters can be combined as required. All filters are digital filters with a coefficient accuracy of 32 bit floating point (exception: analog notch filter).

¹⁾ With/without analog notch filter

Weighting filters

- A weighting
- C message
- CCITT
- CCIR weighted, unweighted
- CCIR ARM
- deemphasis 50/15, 50, 75, J, 17
- rumble weighted, unweighted
- DC noise highpass
- IEC tuner
- jitter weighted

User-definable filters

8th order elliptical, type C (for highpass and lowpass filters also 4th order), passband ripple +0/-0.1 dB, stopband attenuation approx. 20 dB to 120 dB selectable in steps of approx. 10 dB (highpass and lowpass filters: stopband attenuation 40 to 120 dB).

Highpass, lowpass filters	limit frequencies (-0.1 dB) selectable, stopband indicated
Bandpass, bandstop filters	passband (-0.1 dB) selectable, stopband indicated
Notch filter	center frequency and width (-0.1 dB) selectable, stopband indicated
Third octave and octave filters	center frequency selectable, bandwidth (-0.1 dB) indicated
File-defined filters	any 8th order filter cascaded from 4 biquads, defined in the z plane by poles/zeros or coefficients

Analog notch filter

For measurements on signals with high S/N ratio, this filter improves the dynamic range of the analyzer by up to 30 dB to 140 dB for analyzer 22 kHz, or 120 dB for analyzer 110 kHz (typical noise floor of FFT). The filter is also used for measuring THD, THD+N and MOD DIST with dynamic mode precision.

Characteristics	available in analog analyzers with measurement functions: <ul style="list-style-type: none"> - rms, wideband - rms, selective - quasi-peak - FFT analysis
Frequency range	10 Hz to 22.5 kHz center frequency (f_c)
Frequency tuning	- automatic to input signal - coupled to generator - fixed through entered value
Stopband	typ. >30 dB, $f_c \pm 0.5\%$
Passband	typ. -3 dB at $0.77 \times f_c$ and $1.3 \times f_c$, typ. +0/-1 dB outside $0.5 \times f_c$ to $2 \times f_c$

Sweep

Generator sweep

Parameters	frequency, level, with bursts also interval and duration, one- or two-dimensional
Sweep	linear, logarithmic, tabular, single, continuous, manual
Stepping	- automatic after end of measurement - time delay (fixed or loaded table)

Analyzer sweep

Parameters	frequency or level of input signal
Sweep	single, continuous
Trigger	- delayed (0 to 10 s) after input level or input frequency variation, settling function selectable
Settling	- time controlled for level, frequency, phase, distortion measurements, settling function: exponential, flat or averaging

Sweep speed

Two-channel rms measurement 20 Hz to 20 kHz, 30-point generator sweep logarithmic (frequency measurement switched off, Low Dist off).

with	GEN TRACK	0.5 s
	AUTO FAST	1 s
	AUTO	2.5 s

Display of results

Units	
Level (analog)	V, dBu, dBV, W, dBm, difference (Δ), deviation ($\Delta\%$) and ratio (without dimension, %, dB) to reference value
Level (digital)	FS, %FS, dBFS, LSBs deviation ($\Delta\%$) or ratio (dB) to reference value
Distortion	% or dB, referenced to signal amplitude, THD and THD+N in all available level units (absolute or relative to selectable reference value)
Frequency	Hz, difference (Δ), deviation ($\Delta\%$) and ratio (as quotient f/f_{ref} , 1/3 octave, octave or decade) to reference value (entered or stored, current generator frequency)
Phase	$^\circ$, rad, difference (Δ) to reference value (entered or stored)
Reference value (level): Fixed value (entered or stored)	
Current value of a channel or generator signal: permits direct measurement of gain, linearity, channel difference, crosstalk. In sweep mode, traces (other trace or loaded from file) can be used as a reference too.	
Graphical display of results	
Monitor (not R&S UPL66)	8.4" LCD, colour
Display modes	<ul style="list-style-type: none"> – display of any sweep trace – display of trace groups – bargraph display with min./max. values – spectrum, also as waterfall display – list of results – bar charts for THD and intermodulation measurements
Display functions	<ul style="list-style-type: none"> – autoscale – X-axis zoom – full-screen and part-screen mode – 2 vertical, 1 horizontal cursor line – search function for max. values – marker for harmonics (spectrum) – user-labelling for graphs – change of unit and scale also possible for loaded traces
Test reports	
Functions	<ul style="list-style-type: none"> – screen copy to printer, plotter or file (PCX, HPGL, Postscript) – lists of results – sweep lists – tolerance curves – list of out-of-tolerance values – equalizer traces
Printer driver	supplied for approx. 130 printers
Plotter language	HP-GL
Interfaces	2 x RS-232-C, Centronics, IEC 625 (option R&S UPL-B4)
Storage functions	
	<ul style="list-style-type: none"> – instrument settings, optionally with measured values and curves – spectra – sweep results – sweep lists – tolerance curves – equalizer traces
Remote control	
	via IEC 625-2 (IEEE 488) and RS-232; commands largely to SCPI (option R&S UPL-B4)

Audio monitor (option R&S UPL-B5)

Headphone connector	6.3 mm jack
Output voltage (U _o)	max. 8 V
Output current (I _o)	max. 50 mA
Source impedance	10 Ω , short-circuit-proof
Recommended headphone impedance	600 Ω

Extended analysis functions (option R&S UPL-B6)

Coherence and transfer functions	can be displayed simultaneously
Frequency range	DC to 21.9 kHz
Frequency resolution	from 5.86 Hz
Averaging	2 to 2048
FFT length	256, 512, 1k, 2k, 4k, 8k points
Rub & buzz measurement	simultaneous measurement of frequency response, rub & buzz and polarity ¹⁾
Frequency range	10 Hz to 110 kHz
Tracking highpass filter	2 to 20 times fundamental
Lower/upper frequency limit	selectable
Measurement time (200 Hz to 20 kHz, 200 points log.)	2 s
Multi-sine generator function	extended functions
Mode 1	crest factor or phase of each component selectable
Mode 2	crest factor selectable
Third octave analysis	for analyzer ANLG 22 kHz and digital 48 kHz
Number of third octaves	32
Frequency range	22 Hz to 22 kHz
Level accuracy	
Center frequency	± 0.2 dB
22 Hz to 22 kHz	± 1.0 dB (IEC 1260, class 0)
Stereo sine	in digital generator only
Frequency range	2 Hz ²⁾ to 21.9 kHz
Frequency	adjustable for each channel
Phase	0 to 360 $^\circ$ (same frequency in both channels)
Level	adjustable for each channel or channel ratio 2/1
Sweep parameters	frequency and level of channel 1
Other functions	under development

Hearing aids test accessories (option R&S UPL-B7)

Consisting of acoustic test chamber, acoustic 2 cm³ coupler, various battery adapters, connecting cables, software for measurements to IEC60118 and ANSI S3.22.

Additionally required options R&S UPL-B5 and R&S UPL-B10

¹⁾ With R&S UPL-B29 only in base rate mode

²⁾ Fixed frequency independent of clock rate.

LAN Interface for R&S UPL06/66 (option R&S UPL-B11)

Connector (rear panel)	RJ45
Supported standards	10Base-T (IEEE standard 10 Mbit/s 802.3) 100Base-Tx (IEEE standard 100 Mbit/s 802.3u)
LAN client	Novell Netware
Supported protocols	IPX, TCP/IP

Modification R&S UPL-U3

Change of source impedance of analog generator to 150 Ω (instead of 200 Ω set as standard) at the factory

General data

Operating temperature range	0 °C to +45 °C
Storage temperature range	-20 °C to +60 °C
Humidity	max. 85% for max. 60 days, below 65% on average/year, no condensation
EMI	EN 50081-1
EMS	EN 50082-1
Safety standards	DIN EN 61010-1, IEC 1010-1, UL 3111-1, CAN/CSA C 22.2 No. 1010-1
Conformity marks	VDE-GS, UL, cUL
Power supply	100/120/220/230 V \pm 10%, 50 Hz to 60 Hz, 160 VA
Dimensions (W x H x D)	435 mm x 192 mm x 475 mm
Weight	12.6 kg

Ordering information

Order designation

Audio Analyzer	R&S UPL	1078.2008.06
Audio Analyzer (for conformance tests on GSM mobile phones)	R&S UPL16	1078.2008.16
Audio Analyzer (without display and keypad)	R&S UPL66	1078.2008.66

Accessories supplied

power cable, operating manual, backup system disks with MS-DOS operating system, backup program disk with operating and measurement software

Options

Low Distortion Generator	R&S UPL-B1	1078.4400.02
Digital Audio I/O 48 kHz	R&S UPL-B2	1078.4000.02
Digital Audio I/O 96 kHz	R&S UPL-B29	1078.5107.02
Digital Audio Protocol	R&S UPL-B21	1078.3856.02
Jitter and Interface Test	R&S UPL-B22	1078.3956.02
Coded Audio Signal Generation	R&S UPL-B23	1078.5188.02
Remote Control	R&S UPL-B4	1078.3804.02
Audio Monitor	R&S UPL-B5	1078.4600.03
Extended Analysis Functions	R&S UPL-B6	1078.4500.02
Hearing Aids Test Accessories	R&S UPL-B7	1090.2704.02
Mobile Phone Test Set	R&S UPL-B8	1117.3505.02
3G Mobile Phone Tests	R&S UPL-B9	1154.7500.02
Universal Sequence Controller	R&S UPL-B10	1078.3904.02
LAN Interface for R&S UPL06/66	R&S UPL-B11	1154.7600.02
Line Measurement to ITU-T 0.33	R&S UPL-B33	1078.4852.02
XLR/BNC Adapter Set	R&S UPL-Z1	1078.3704.02
150 Ω Modification	R&S UPL-U3	1078.4900.02

Recommended extras

19" Rack Adapter	R&S ZZA-94	0396.4905.00
Service manual		1078.2089.24
Audio Switcher (Input, female)	R&S UPZ	1120.8004.02
Audio Switcher (Output, male)	R&S UPZ	1120.8004.03



ROHDE & SCHWARZ

ROHDE & SCHWARZ GmbH & Co. KG · Mühlhofstraße 15 · 81671 München · Germany · P.O.B. 8014 69 · 81614 München · Germany · Telephone +49 89 4129-0
www.rohde-schwarz.com · Customer Support: Telephone +49 1805124242, Fax +49 89 4129-13777, E-mail: CustomerSupport@rohde-schwarz.com



Multichannel audio measurements on surround sound decoders

with the Audio Analyzer UPL, Option UPL-B23 and Audio Switcher UPZ

Option UPL-B23

- ◆ Generation of coded test signals in AC-3 format (Dolby Digital)
- ◆ User-selectable sweep parameters

Audio Switcher UPZ

- ◆ Available as input and output switcher
- ◆ Cascading of up to 128 channels

- ◆ Direct operation via the Audio Analyzer UPL
- ◆ Control via RS-232-C for universal applications



Coded Audio Signal Generation (UPL-B23)

Coded audio signals

It is hard to imagine the current audio world without keywords such as surround sound, 5.1 channels, etc. Originally designed for use in movie theaters, these multichannel transmission methods have in the meantime found their way into private households.

In all multichannel methods, the six channels generally used are data-reduced for transfer in the digital audio formats established for stereo transmission. In the home units, such as audio/video receivers, the data streams are decoded for analog and multichannel replay.

Previous method

Up to now, measuring surround decoders necessarily involved defining and storing coded test sequences on a DVD or the PC hard disk. The DVD player/PC was connected to the DUT, where the test signals were decoded and finally measured by an audio analyzer at the analog outputs. Since the test files and the measurements ran on different instruments, synchronization was difficult, leading to extended measurement times.

Modern solution: Audio Analyzer UPL plus UPL-B23

The UPL-B23 option enables the Audio Analyzer UPL to generate AC-3-coded test signals directly with the built-in generator. The measurements are synchronized automatically between the generator and the analyzer.

This has the following advantages:

- ◆ The internal synchronization considerably speeds up measurements
- ◆ Test sequences can be combined much more flexibly, since the number of channels, frequency or level sweep, start and stop frequency/level as well as the number of sweep

points can be set directly; settings are made in a similar way to those for a standard analog sweep

- ◆ The test signals are no longer recorded on DVD/PC, thus saving time previously spent on combining and coding the test signals
- ◆ Additional hardware, such as a PC or DVD player, is not required

Functional description

Several thousand AC-3-coded test files are stored on the hard disk of the Audio Analyzer UPL, with each individual file representing a defined frequency/level combination. The files required for a sweep are loaded into the DSP and replayed until the analyzer yields a settled measurement result. The analyzer then switches automatically to the next file (=next frequency/level point), and the next measurement is triggered until the complete sweep has been processed.

Each of the WAV files used contains one or more complete sine periods. The files can thus be combined to form a test sequence without interruption and artifacts. The DUT remains synchronized to the AC-3 data stream.

Test files available

The AC-3 format (Dolby Digital) is currently supported, and other data formats are in preparation. At present, the test files are:

- ◆ Stereo signals (coded with 192 kbit/s) and 5.1-channel signals (448 kbit/s), for frequency and level sweeps; these signals allow the measurement of frequency response, linearity, S/N ratio and harmonic distortion
- ◆ Test signals for the individual channels (448 kbit/s) to determine crosstalk attenuation

GENERATOR

- INSTRUMENT DIGITAL
- Src Mode AUDIO DATA
- Channel(s) 2 = 1
- Bal Upp 4.0000 V
- FUNCTION - **CODED AUDIO**
- Format AC-3
- Chan Mode 5.1 448kb/s
- SWEEP CTRL AUTO SWEEP
- Next Step ANLR SYNC
- X Axis FREQUENCY
- FREQUENCY**
- Spacing LOG POINTS
- Start 20.000 Hz
- Stop 20.000 kHz
- Points 50
- TOTAL VOLT -20.00 dBFS

Sweep generation – as easy as with analog applications

- Select function
- Stereo, single channel or multichannel
- Frequency or level sweep
- Start and stop value
- Number of sweep points

Audio Switcher UPZ

Measuring surround decoders

Surround applications for use in the home generally have six channels. In order to test 5.1 decoders, the six channels are connected to the Audio Analyzer UPL via the Audio Switcher UPZ. The UPZ is controlled directly from the UPL panel via an RS-232-C interface.

For professional surround applications, the Audio Switcher UPZ comprises 8 channels, with two output channels to allow the two UPL measurement channels to be used simultaneously.

Input/output model

Like the Audio Analyzer UPL, the Audio Switcher UPZ has XLR connectors. Since there is a difference between male and female connectors in the XLR system, the UPZ is available both as an input and an output model.

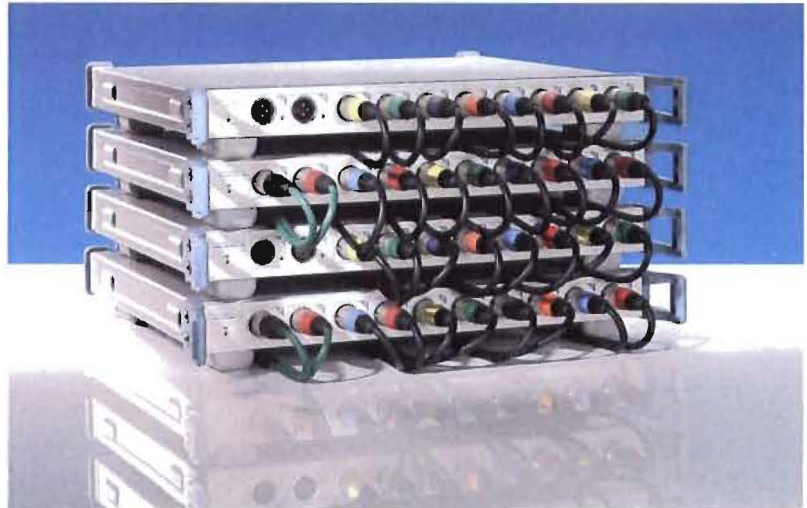
It is possible to cascade up to 16 input switchers plus 16 output switchers, allowing up to 128 input and output channels to be switched.

Extended range of applications

The Audio Switcher UPZ can be operated not only via the UPL. Through its RS-232-C interface, it can also be controlled directly from other units or a controller. This opens up new possibilities; for instance, in broadcasting stations, where studio operations require the switching of several audio channels. The UPZ may also be used in production; for instance, when car radios are tested, measurements can be performed at all four loudspeaker outputs.



Multichannel measurements on audio/video receiver



With the Audio Switcher UPZ, up to 128 input and 128 output channels can be cascaded

Specifications

Coded Audio Signal Generation UPL-B23

Format	AC-3 (IEC 61937)
Coding	
Stereo signals	192 kbit/s
5.1-multichannel	448 kbit/s
Single channels	448 kbit/s
Frequency range	5.2083 Hz to 20 kHz
Level range	0 dBFS to -120 dBFS
Sweep parameters	frequency, level

Audio Switcher UPZ

Electrical data

Signal amplitude ¹⁾	30 V (RMS)/2 A (42 V (peak))
Crosstalk (balanced 600 Ω load) ²⁾	
20 kHz	-140 dB typ.
100 kHz	-126 dB typ.
Series resistance	<0.3 Ω typ. (per signal pin)
Shunt capacitance	<90 pF typ. (each signal pin to ground)

General data

Operating temperature range	0 °C to +50 °C
Storage temperature range	-40 °C to +70 °C
Humidity	95% relative humidity at +40 °C; meets IEC68 2-3 (no condensation)
EMI	EN 50081-1
EMS	EN 50082-2
Safety standards	DIN EN 61010-1, IEC 61010-1, UL 3111-1, CAN/CSA C 22.2 No. 1010-1
Test marks	VDE-GS, cCSAus
Power supply	100 V to 120 V (AC) (±10%) 220 V to 240 V (AC) (±10%) 50 Hz to 60 Hz (±5%)
Power consumption	
Input switcher	5 VA typ. 10 VA max.
Output switcher	5 VA typ. 12 VA typ. (all channels active) 15 VA max.
Remote control	via RS-232-C
Dimensions (W x H x D)	427 mm x 43 mm x 350 mm
Weight	3.7 kg

¹⁾ For maximum relay life: 5 W or 0.2 A max.

²⁾ Between any two channels into 600 Ω.

Ordering information

Order designation

Coded Audio Signal Generation	UPL-B23	1078.5188.02
Audio Switcher (Input, female)	UPZ	1120.8004.02
Audio Switcher (Output, male)	UPZ	1120.8004.03

Accessories supplied (UPZ)

power cable, operating manual, service manual,
RS-232-C extension cable

Recommended extras (UPZ)

19" Rack Adapter	ZZA-111	1096.3254.00
------------------	---------	--------------

Certified Quality System

ISO 9001

DQS REG. NO.1954

Certified Environmental System

ISO 14001

REG. NO.1954



ROHDE & SCHWARZ

ROHDE & SCHWARZ GmbH & Co. KG · Mühldorfstraße 15 · 81671 München · Germany · P.O.B. 8014 69 · 81614 München · Germany · Telephone +49 89 4129-0
www.rohde-schwarz.com · Customer Support: Tel. +49 1805124242, Fax +49 89 4129-13777, E-mail: CustomerSupport@rohde-schwarz.com



Facts and Figures
2002



ROHDE & SCHWARZ

From our principles

■ We are an independent manufacturer

of electronic equipment and systems.

Our name is synonymous with innovation,

precision and quality. A leading position

on the European market and worldwide

presence are the solid basis to our success.


Who we are and what we do

■ Rohde & Schwarz is an internationally active company in the fields of test and measurement, information technology and radiocommunications. For more than 60 years the company group has been developing, producing and marketing a wide range of electronic products for the capital goods sector. The company is headquartered in Munich. With 5600 employees worldwide and subsidiaries and representatives in over 70 countries around the world, the Rohde & Schwarz group achieves an annual turnover in excess of 1.0 billion Euro. The company is highly export-oriented:

■ More than 70% of the total turnover is achieved outside Germany. Due to the comprehensive know-how and the innovative strength of its employees, Rohde & Schwarz is among the technological leaders in all of its business fields.

■ Today the Rohde & Schwarz group of companies is active in the following fields:

- ◆ Test and measurement
- ◆ Radiocommunications systems
- ◆ Mobile radio
- ◆ Broadcasting
- ◆ Radiomonitoring and radiolocation
- ◆ Information security
- ◆ Services

■ The quality and environmental management system of Rohde & Schwarz has been certified to  Certified Quality System **ISO 9001** DIN EN ISO 9001 and 14001 and complies with the standards of AQAP 110 and 150. The company has approval for the development, production, installation and servicing of avionic communication equipment and is the first German transmitter manufacturer authorized to carry out BZT (Federal Approvals Office for Telecommunications) approval testing for radio transmitter systems.

Our business fields and products

Rohde & Schwarz is the largest manufacturer of electronic test and measurement equipment in Europe. Our T&M instruments and systems are setting standards worldwide in research, development, production and service. We are the key partner for the industry and network operators as far as all measurement tasks in the field of analog and digital communication.

Mobile radio measurements

- ◆ Complete range of measuring instruments, test sets and systems for mobile and base stations of analog and digital mobile communication networks
- ◆ Radiocommunication testers for use in production, development and service
- ◆ Go/Nogo testers
- ◆ Signal generators and analyzers as well as power meters
- ◆ Protocol testers
- ◆ Coverage and interference measurement systems
- ◆ Type-approval test systems

EMC measurements

- ◆ Complete EMC test centers
- ◆ Turnkey systems for measurement of electromagnetic interference (EMI) and electromagnetic susceptibility (EMS)
- ◆ Test receivers and EMI spectrum analyzers for compliance and precompliance measurements
- ◆ Full range of accessories:
 - Artificial mains networks
 - Antennas and masts
 - Field probes
 - Transducers
- ◆ Software

General-purpose and RF measurements

- ◆ RF and microwave signal generators
- ◆ ARB generators
- ◆ Spectrum and network analyzers
- ◆ Audio and modulation analyzers
- ◆ Voltmeters and power meters
- ◆ Field-strength test receivers
- ◆ Process controllers
- ◆ Power supply units

Automatic test systems

- ◆ Type-approval and certification test systems
- ◆ Production test systems for communication terminal equipment
- ◆ Coverage measurement systems for all modern radio networks
- ◆ EMC test systems and test centers
- ◆ Board test systems (in-circuit and functional testers)
- ◆ Monitoring, coverage and transmitter test systems for both analog and digital sound and TV broadcasting

Video and broadcast measurements

see page 9

Our business fields and products

Rohde & Schwarz is one of the leading international suppliers of professional HF, VHF and UHF radio systems for use in stationary and mobile ground stations, on ships and in aircraft. Embassies, governmental authorities and armed forces worldwide use our radio equipment for voice, data and image transmission. We support our customers by providing product-related consulting, logistics concepts and services. With the new digital software radio generation for tactical mobile, stationary, as well as shipborne and airborne use, we have created a means of communication that ensures interoperability within national task forces and with allied nations in UN and NATO missions.

ATC systems

- ◆ VHF and UHF radio systems for ground-to-air communications
- ◆ Radio direction finding systems
- ◆ Remote monitoring and control of ATC systems
- ◆ Mobile ATC towers

Air defence systems

- ◆ VHF/UHF radio systems for voice and data transmission
- ◆ Integrated methods for secure and protected transmission
- ◆ Network management including frequency and key management

Avionics

- ◆ HF, VHF, UHF airborne transceivers for secure and protected voice and data transmission

Naval communication systems

- ◆ Systems for internal and external communications
- ◆ Integrated control and message handling systems
- ◆ HF broadband systems

Army communication systems

- ◆ Tactical multiband radio equipment
- ◆ HF transmitting / receiving systems for stationary and mobile use
- ◆ Network integration and radio link to Internet

Mobile radio

Rohde & Schwarz ranks among the leading suppliers of MPT-1327 and TETRA mobile radio systems for the professional user. Worldwide installations at Ministries of the Interior, commuter traffic enterprises, at railway stations and airports as well as for public network operators speak for the effectiveness of our solutions.

Trunked radio systems

- ◆ Network engineering
- ◆ Switching systems
- ◆ Base stations
- ◆ Network management and applications
- ◆ Turnkey systems

Our business fields and products

■ For 50 years sound and TV broadcasting has been one of the key activities of Rohde & Schwarz. We are the only supplier of a complete range of transmission, monitoring, measurement and datacasting equipment in the world. We are international leaders as regards equipment and T&M systems and instruments for the new digital transmission methods DAB, DVB and MPEG2.

Sound and TV broadcast transmitters

- ◆ VHF FM sound broadcast transmitter systems from 20 W to 20 kW
- ◆ Analog TV transmitter systems from 20 W to 40 kW
- ◆ Digital audio broadcast (DAB) systems from 50 W to 1 kW
- ◆ Digital video broadcast (DVB-T, ATSC) systems from 50 W to 10 kW

Measurement and monitoring systems

- ◆ Monitoring systems for terrestrial transmitter stations
- ◆ Measurement systems for development, production and maintenance of transmitters

Video and broadcast measurements

- ◆ Generators and analyzers for MPEG2, DVB and ATSC transport streams, for use in development, production and monitoring
- ◆ Picture quality analyzers
- ◆ Analog baseband generators and analyzers
- ◆ Signal generators and test receivers, modulators and demodulators for analog sound and TV broadcasting standards as well as for DVB-C/S, DVB-T and DTV-ATSC
- ◆ TV network analyzers
- ◆ Studio measurement equipment

Datacasting

- ◆ Inserter for inserting additional data in Internet format for DVB and DAB
- ◆ Software for cyclical provision of contents and for transmission of Internet-based TV and radio programs
- ◆ Software for data service management
- ◆ Software for data processing at the receiver end

Our business fields and products

■ Rohde & Schwarz is worldwide a leading manufacturer of equipment and systems for detection, location and analysis of radiocommunication signals in the following fields of application:

- ◆ Internal and external security
- ◆ National and international radiomonitoring by postal authorities
- ◆ Frequency management

We are leading in the design and implementation of full-coverage automatic radiomonitoring and frequency management systems. Many years of experience and ultramodern technology are the sound basis of our receivers, direction finders, signal analyzers and antennas:

Receivers

- ◆ Fast search receivers
- ◆ Stationary and portable monitoring receivers
- ◆ Computer-controlled receiving systems

Direction finders

- ◆ Extremely fast, broadband, digital radiomonitoring direction finders for stationary and mobile/portable use
- ◆ Automatic radiolocation networks using direction finders

Signal analyzers

- ◆ Versatile signal analyzers for flexible use
- ◆ Automatic signal classifiers
- ◆ Signal decoders, demodulators

Antennas

- ◆ Receiving and transmitting antennas
- ◆ Test antennas
- ◆ Complex antenna systems

Information security

■ ROHDE & SCHWARZ SIT GmbH provides solutions for secure and reliable utilization of modern information and communication technology. Key activities are in the development of crypto products and systems for the protection of information in modern data processing and communication systems as well as consulting and information security analyses for industry and government authorities.

- ◆ Hardware and software crypto products
- ◆ Customized crypto systems
- ◆ Consulting and IT security analyses

Services

■ With its Central Service in Munich and its Cologne Plant, Rohde & Schwarz maintains two of Europe's largest service centers for T&M and communications equipment. We offer our customers a powerful global service network comprising more than 50 service centers worldwide.

- ◆ Calibration, maintenance and repair
- ◆ Customized service contracts
- ◆ Planning, development, system integration
- ◆ Development of customer-specific systems
- ◆ Technical documentation and logistics
- ◆ Electronic information systems, multimedia applications

■ Our training centers in Cologne and Munich offer a comprehensive choice of courses on T&M and communications topics, which on request can also be held at the customer's

- 1938 World's first portable crystal clock
- 1948 Europe's first VHF sound broadcast transmitter
- 1964 Europe's first air-traffic-noise monitoring system
- 1967 Europe's first automatic IC test system
- 1974 First microprocessor-controlled radio measurement system
- 1975 World's first quality monitoring system for TV signals
- 1980 Europe's first stereo/dual-sound TV transmission system
- 1984 First processor for automatic setup of shortwave links
- 1986 Introduction of radio data system RDS for sound broadcasting in Germany
- 1990 First compact test set for GSM transmitters and receivers
- 1992 Exclusive supplier of reference test equipment for type-approval testing of GSM mobile phones
- 1992 World's fastest digital radiomonitoring system
- 1995 Technical equipment for world's largest pilot project for digital audio broadcasting (DAB)
- 1996 First integrated HF voice/data radio for use in commercial aircraft for fully automatic worldwide transmission of flight data
- 1997 Order for nationwide DVB-T transmitter network in Great Britain (largest DVB project worldwide)
- 1999 World's first operational universal software radios for use on military platforms
- 2001 World's first tap-proof GSM mobile phone

Munich

■ Company headquarters in Munich house the R&D departments, systems engineering and assembly, training and service center, central divisions and administration.

ROHDE & SCHWARZ GmbH & Co. KG
Mühlendorfstraße 15 · 81671 München
P.O. Box 80 14 69 · 81614 München
Phone +49 89 41 29-0
Fax +49 89 41 29-121 64
Internet www.rohde-schwarz.com

Memmingen

■ The plant in Memmingen is responsible for the final production and delivery of all Rohde & Schwarz equipment.

ROHDE & SCHWARZ Messgerätebau GmbH
Riedbachstraße 58 · 87700 Memmingen
P.O. Box 16 52 · 87686 Memmingen
Phone +49 8331 10-80
Fax +49 8331 10-811 24

Teisnach

■ The Rohde & Schwarz plant in northern Bavaria produces the mechanical and electrical parts for the equipment production in Memmingen.

ROHDE & SCHWARZ GmbH & Co. KG
Kaikenrieder Straße 27 · 94244 Teisnach
P.O. Box 11 49 · 94240 Teisnach
Phone +49 9923 85-70
Fax +49 9923 85-711 74

Cologne

■ Rohde & Schwarz Cologne Plant is one of Europe's largest service centers for electronic T&M and communications equipment. Services include maintenance and repair, training, technical documentation and logistics (also in conjunction with multimedia applications), system integration and adaption as well as services for information and communications technology projects. The Cologne Plant is an accredited calibration laboratory of the German Calibration Service.

ROHDE & SCHWARZ GmbH & Co. KG
Graf-Zeppelin-Straße 18 · 51147 Köln

P.O. Box 98 02 60 · 51130 Köln

Phone +49 2203 49-0

Fax +49 2203 49-512 29

E-mail info@rsdc.rohde-schwarz.com

and service@rsdc.rohde-schwarz.com

Hotline 0180 563 56 75

Subsidiaries

ROHDE & SCHWARZ Vertriebs-GmbH (RSV)

■ Founded in Berlin in 1946 and relocated to Munich in 1961, RSV is responsible for domestic sales of Rohde & Schwarz products as well as products of other make marketed on behalf of RSE (see page 15). RSV has a marketing network throughout Germany.

ROHDE & SCHWARZ Vertriebs-GmbH

Mühldorfstraße 15 · 81671 München

P.O. Box 80 14 69 · 81614 München

Phone +49 89 41 29-137 74

Fax +49 89 41 29-137 77

E-mail Customersupport@rohde-schwarz.com

ROHDE & SCHWARZ International GmbH (RUSIS)

■ Since the end of 1993, RUSIS has been responsible for sales of Rohde & Schwarz products outside Europe. The company coordinates agencies, representatives and other business partners in the Asia-Pacific region, Middle East, Africa, North and Latin America.

ROHDE & SCHWARZ International GmbH

Mühldorfstraße 15 · 81671 München

P.O. Box 80 14 60 · 81614 München

Phone +49 89 41 29-124 62

Fax +49 89 41 29-136 62

ROHDE & SCHWARZ Engineering and Sales GmbH (RSE)

■ Founded as a subsidiary in 1972 and headquartered in Munich, RSE is primarily involved in marketing complementary products from other manufacturers. The objective of RSE is a vertical completion of the Rohde & Schwarz product line in close cooperation with headquarters and the representatives abroad. The companies represented by RSE include renowned manufacturers such as the Rohde & Schwarz cooperation partner Advantest from Japan.

ROHDE & SCHWARZ

Engineering and Sales GmbH

Mühldorfstraße 15 · 81671 München

P.O. Box 80 14 29 · 81614 München

Phone +49 89 41 29-137 11

Fax +49 89 41 29-137 23

R&S BICK Mobilfunk GmbH

■ R&S BICK Mobilfunk GmbH with headquarters in Bad Münde specializes in the development and implementation of professional mobile radio systems. In particular, the company supplies TETRA and MPT-1327 mobile radio networks and applications.

R&S BICK Mobilfunk GmbH

Fritz-Hahne-Str. 7 · 31848 Bad Münde

Phone +49 50 42 998-0

Fax +49 50 42 998-105

E-mail rsbick@rsbick.rohde-schwarz.com

Internet www.rsbick.de

ROHDE & SCHWARZ FTK GmbH

■ ROHDE & SCHWARZ FTK GmbH with headquarters in Berlin develops and supplies products and systems in the field of analog and digital audio broadcasting as well as solutions for the transmission of ancillary data via digital broadcast channels (datacasting). The variety of services offered also includes development services for radiocommunication and broadcasting equipment.

ROHDE & SCHWARZ FTK GmbH

Wendenschlossstraße 168, Haus 28 · 12557 Berlin

Phone +49 30 658 91-122

Fax +49 30 655 50-221

E-mail hotline.ftk@ftk.rohde-schwarz.com

ROHDE & SCHWARZ SIT GmbH

■ ROHDE & SCHWARZ SIT GmbH provides solutions for security in information technologies. Key activities are in the development of crypto products and systems for the protection of information in modern data processing and communication systems as well as consulting and IT security analyses for industry and government authorities.

ROHDE & SCHWARZ SIT GmbH

Wendenschlossstraße 168, Haus 28 · 12557 Berlin

From February 2002: Agastr. 3 · 12489 Berlin

Phone +49 30 658 84-0

Fax +49 30 658 84-183

E-mail contact@sit.rohde-schwarz.com

■ To secure a complete market presence in the technological key regions North America and Japan, we are cooperating with successful local partners who guarantee customer-oriented consultation and competent servicing – Tektronix in North America and Advantest in Japan.

Tektronix

■ The company was founded in 1946 and with its headquarters in Beaverton/Oregon is now fully devoted to test and measurement products after selling its line of printers and video/network equipment in 1999. In the fiscal year 2001, Tektronix achieved a total turnover of 1235 million US\$. In North America, the Tektronix product range is enhanced by almost the full range of T&M products from Rohde & Schwarz. The two companies also cooperate in the development of test and measurement instruments for special applications.

Advantest

■ Advantest, a Tokyo-based company founded in 1954, is the world's leading supplier of semiconductor test systems. The second most important business field is test and measurement equipment. In the fiscal year 2000, Advantest had a total turnover of 262 billion Yen. Advantest and Rohde & Schwarz have concluded a mutual sales agreement for T&M products: Advantest sells Rohde & Schwarz equipment in Japan and Rohde & Schwarz markets Advantest test and measurement instruments in Europe, the Middle East, in Brazil, Australia, South Africa and other countries. The two companies also cooperate in the development of T&M equipment for the Japanese market.

Headquarters

ROHDE & SCHWARZ GmbH & Co. KG
 Mühldorfstraße 15 · 81671 München
 P.O. Box 80 14 69 · 81614 München
 Internet www.rohde-schwarz.com

Phone
 Fax
 E-mail

+49 89 41 29-0
 +49 89 41 29-121 64

Plants

ROHDE & SCHWARZ Messgerätebau GmbH
 Riedbachstraße 58 · 87700 Memmingen
 P.O. Box 16 52 · 87686 Memmingen

+49 8331 10-80
 +49 8331 10-811 24

**ROHDE & SCHWARZ GmbH & Co. KG
 Werk Teisnach**
 Kaikenieder Straße 27 · 94244 Teisnach
 P.O. Box 11 49 · 94240 Teisnach

+49 9923 85-70
 +49 9923 85-711 74

**ROHDE & SCHWARZ GmbH & Co. KG
 Werk Köln**
 Graf-Zeppelin-Straße 18 · 51147 Köln
 P.O. Box 98 02 60 · 51130 Köln
 Hotline 0180 563 56 76

+49 2203 49-0
 +49 2203 49-512 29
info@rsdc.rohde-schwarz.com
service@rsdc.rohde-schwarz.com

Subsidiaries

ROHDE & SCHWARZ Vertriebs-GmbH
 Mühldorfstraße 15 · 81671 München
 P.O. Box 801469 · 81614 München
 Hotline 0180 51 21 42

+49 89 41 29-137 74
 +49 89 41 29-137 77
customersupport@rohde-schwarz.com

ROHDE & SCHWARZ International GmbH
 Mühldorfstraße 15 · 81671 München
 P.O. Box 80 14 60 · 81614 München

+49 89 41 29-124 62
 +49 89 41 29-136 62

ROHDE & SCHWARZ Engineering and Sales GmbH
 Mühldorfstraße 15 · 81671 München
 P.O. Box 80 14 29 · 81614 München

+49 89 41 29-137 11
 +49 89 41 29-137 23

R & S BICK Mobilfunk GmbH
 Fritz-Hahne-Str. 7 · 31848 Bad Münder
 P.O. Box 20 02 · 31844 Bad Münder
 Internet www.rsbeck.de

+49 5042 998-0
 +49 50 42 998-105
rsbeck@rsbeck.rohde-schwarz.com

ROHDE & SCHWARZ FTK GmbH
 Wendenschlossstraße 168, Haus 28
 12557 Berlin

+49 30 658 91-122
 +49 30 655 50-221
hotline.ftk@ftk.rohde-schwarz.com

Phone
 Fax
 E-mail

ROHDE & SCHWARZ SIT GmbH
 Wendenschlossstraße 168, Haus 28
 12557 Berlin

+49 30 658 84-0
 +49 30 658 84-183
contact@sit.rohde-schwarz.com

From February 2002:
 Agastraße 3 · 12489 Berlin

Branch offices of ROHDE & SCHWARZ Vertriebs-GmbH

Zweigniederlassung Büro Bonn
 Josef Wirmer Straße 1-3 · 53123 Bonn
 P.O. Box 14 02 64 · 53057 Bonn

+49 228 918 90-0
 +49 228 25 50 87
customersupport@rohde-schwarz.com

Zweigniederlassung Nord, Geschäftsstelle Berlin
 Ernst-Reuter-Platz 10 · 10587 Berlin
 P.O. Box 10 06 20 · 10566 Berlin

+49 30 34 79 48-0
 +49 30 34 79 48-48
customersupport@rohde-schwarz.com

Zweigniederlassung Nord, Geschäftsstelle Hamburg
 Steilshooper Allee 47 · 22309 Hamburg
 P.O. Box 60 22 40 · 22232 Hamburg

+49 40 63 29 00-0
 +49 40 63 07 870
customersupport@rohde-schwarz.com

Zweigniederlassung Mitte, Geschäftsstelle Köln
 Niederkasseler Straße 33 · 51147 Köln
 P.O. Box 90 01 49 · 51111 Köln

+49 2203 807-0
 +49 2203 807-50
customersupport@rohde-schwarz.com

Zweigniederlassung Mitte, Geschäftsstelle Neu-Isenburg
 Siemensstraße 20 · 63263 Neu-Isenburg

+49 6102 20 07-0
 +49 6102 80 00 40
customersupport@rohde-schwarz.com

Zweigniederlassung Süd, Geschäftsstelle München
 Mühldorfstraße 15 · 81671 München
 P.O. Box 80 14 49 · 81614 München

+49 89 41 29-0
 +49 89 40 47 64
customersupport@rohde-schwarz.com

Zweigniederlassung Süd, Geschäftsstelle Nürnberg
 Donaustraße 36 · 90451 Nürnberg

+49 911 642 03-0
 +49 911 642 03-33
customersupport@rohde-schwarz.com

Zweigniederlassung Netzbetreiber
 Siemensstraße 20 · 63263 Neu-Isenburg

+49 6102 20 07-0
 +49 6102 20 07-12
customersupport@rohde-schwarz.com

Algeria

ROHDE & SCHWARZ Bureau d'Alger
5 B, Place de Laperrine
16035 Hydra-Alger

Argentina

Precisión Electrónica S.R.L.
Av. Julio A. Roca 710 - Piso 6
1067 Buenos Aires

Australia

ROHDE & SCHWARZ
(AUSTRALIA) Pty Ltd.
Unit 6, 2-8 South Street
Rydalmere, N.S.W. 2116

Austria

ROHDE & SCHWARZ-ÖSTERREICH
Ges. m. b. H.
Sonnenleithnergasse 20
1100 Wien

Azerbaijan

ROHDE & SCHWARZ Azerbaijan
Liaison Office Baku
Azerbaijan Avenue 35
370000 Baku

Baltic Countries see Denmark**Bangladesh**

BIL Consortium Ltd.
Corporation Office
House No: 95/A, Block -'F'
Road No: 4, Banani
Dhaka - 1213

Belgium

ROHDE & SCHWARZ BELGIUM N.V.
Excelsiorlaan 31 Bus 1
1930 Zaventem

Bolivia

RIBCO LTDA.
Av. Manscal Santa Cruz #1392
Ed. Cámara Nacional de Comercio
Piso 10, Of. 1010-1011
La Paz

Phone**Fax****E-mail**

+213 21 48 20 18
+213 21 69 46 08

+541 14 331 16 85
+541 14 334 51 11
preelctr@satlink.com

+61 2 88 45 41 00 (Sales)
+61 2 88 45 41 88 (Service)
+61 2 96 38 39 88
sales@rsaus.rohde-schwarz.com
service@rsaus.rohde-schwarz.com

+43 1 602 61 41-0
+43 1 602 61 41-14
office@rsae.rohde-schwarz.com

+994 12 93 31 38
+994 12 93 03 14
r&s-azerbaijan@artel.net.az

+880 2 881 06 53
+880 2 882 82 91

+32 2 721 50 02
+32 2 725 09 36
info@rsb.rohde-schwarz.com

+591 2 233 48 05
+591 2 239 30 47
gibanta@casba.entelnet.bo

Brazil

ROHDE & SCHWARZ DO BRASIL LTDA.
Av. Alfredo Egidio de Souza Aranha,
177 - 1º andar - Santo Amaro
04726-170 São Paulo- SP

Brunei

GKL Equipment PTE. Ltd.
#11-01 BP Tower
396, Alexandra Road
Singapore 119954
Republic of Singapore

Bulgaria see Austria**Canada**

Communications equipment.
ROHDE & SCHWARZ CANADA Inc.
555 March Rd.
Kanata, Ontario K2K 2M5

T&M equipment:
TEKTRONIX CANADA Inc.
3280 Langstaff Road, Unit 1
Concord, Ontario L4K 5B6

Chile

DYMEQ Ltda.
Avenida Larrain 6666
Santiago

China

ROHDE & SCHWARZ
Representative Office Beijing
Parkview Center, Room 602
No. 2 Jiangtai Road,
Chao Yang District
Beijing 100016

Colombia

Ferrostaal de Colombia Ltda.
Av. Eldorado Nro. 97-03, Int 2
Santafé de Bogotá, D.C.

Croatia see Austria**Republic of Cyprus**

HINIS TELECAST LTD
P.O. Box 432
6304 Larnaca

Phone**Fax****E-mail**

+55 11 56 41 12 00
+55 11 56 41 78 10

+65 2 76 06 26
+65 2 76 06 29
gklrspt@singnet.com.sg

+1 613 592 80 00
+1 613 592 80 09

+1 416 747 50 00
+1 905 760 72 41

+56 2 277 50 80
+56 2 227 87 75
dymeq@entelchile.net

+86 10 64 31 28 28
+86 10 64 37 98 88
info.rschina@rsbp.rohde-schwarz.com

+57 1 401 13 00
+57 1 413 18 06
miguel_caranoli@ferrostaal.com

+357 4 42 51 78
+357 4 42 46 21
hinis@huginn.cy.net

Czech Republic

ROHDE & SCHWARZ – Praha s.r.o.
Evropska 33c
16000 Praha 6

Phone

Fax

E-mail

+420 2 24 32 20 14
+420 2 24 31 70 43
rohdez@rsoe.com

Denmark

ROHDE & SCHWARZ DANMARK A/S
Ejby Industrivej 40
2600 Glostrup

+45 43 43 66 99
+45 43 43 77 44
rdsk@post1.tele.dk

Ecuador

REPRESENTACIONES
MANFRED WEINZIERL
Guanguiltagua 72 (39-93)
Urbanización Jardines del Batán
Quito

+593 22 45 65 10
+593 22 25 22 51
mweinzierl@accessinter.net

Egypt

U.A.S. Universal Advanced Systems
31 Manshiet El-Bakry Street, Heliopolis
11341 Cairo

+20 2 455 67 44
+20 2 256 17 40
an_uas@intouch.com

El Salvador see Mexico (EPSA)**Estonia**

ROHDE & SCHWARZ DANMARK A/S
Estonian Branch Office
Narva mnt. 13
10151 Tallinn

+372 6 14 31 23
+372 6 14 31 21

Finland

Orbis Oy
P.O. Box 15
00421 Helsinki 42

+358 9 47 88 30
+358 9 53 16 04
info@orbis.fi

France

ROHDE & SCHWARZ FRANCE
Immeuble "Le Newton"
9-11, rue Jeanne Braconnier
92366 Meudon-la-Forêt Cédex

+33 1 41 36 10 00
+33 1 41 36 11 73

Subsidiary Rennes:
ROHDE & SCHWARZ FRANCE
37 Rue du Bignon, Bât. A
35510 Cesson Sevigne

+33 2 99 51 97 00
+33 2 99 41 91 31

Subsidiary Toulouse
ROHDE & SCHWARZ FRANCE
Technoparc 3
B.P. 501
31674 Labège Cédex

+33 5 61 39 10 69
+33 5 61 39 99 10

Offices:

Aix-en-Provence

Lyon

Nancy

Phone

Fax

E-mail

+33 4 94 07 39 94
+33 4 94 07 55 11
+33 4 78 29 88 10
+33 4 78 29 94 71
+33 3 83 54 51 29
+33 3 83 55 39 51

Ghana

KOP Engineering Ltd.
P.O. Box 11012
3rd Floor Akai House, Osu Accra
Accra North

+233 21 77 89 13
+233 21 701 06 20

Greece

MERCURY SA
6, Loukianou Str.
10675 Athens

+30 1 722 92 13
+30 1 721 51 98
mercury@hol.gr

Guatemala see Mexico (EPSA)**Honduras** see Mexico (EPSA)**Hong Kong**

Schmidt & Co. (HK) Ltd.
36/F Dorset House
Taikoo Place
979 King's Road
Quarry Bay
Hong Kong

+852 25 07 03 33
+852 25 07 09 25
kenipoon@shk.schmidtgroup.com

Hungary

ROHDE & SCHWARZ
Budapesti Iroda
Etele ut. 68
1115 Budapest

+36 1 203 02 82
+36 1 203 02 82
rohdehu@rsoe.rohde-schwarz.com

Iceland see Denmark**India**

ROHDE & SCHWARZ
India Pvt. Ltd.
244, Okhla Industrial Estate
Phase - III
New Delhi 110 020

+91 11 632 63 81
+91 11 632 63 73
sales@india.rohde-schwarz.com
services@rsindia.rohde-schwarz.com

Indonesia

Representative Office Jakarta
Menara Rajawali,
24th floor
Jl Mega Kuningan Lot # 5.1
Kawasan Mega Kuningan
Jakarta 12950

+62 21 576 16 02
+62 21 576 16 04
sales@rsidj.rohde-schwarz.com
services@rsidj.rohde-schwarz.com

Iran

ROHDE & SCHWARZ IRAN
Liaison Office - Reg. N° RFC 1947
Dr. Beheshty Ave., Pakistan Ave.,
12th Street N° 1
Tehran 15317

Phone
Fax
E-mail

+98 21 873 02 82
+98 21 873 02 83

Ireland see United Kingdom

Israel

Communications equipment:
J. M. Moss Engineering Ltd.
9 Odad Street
P.O. Box 967
52109 Ramat Gan

+972 3 631 20 57
+972 3 631 40 58
jmmoss@zahar.net

T&M equipment:
EASTRONICS LTD.
11 Rozanis St.
P.O. Box 39300
Tel Aviv 61392

+972 3 645 86 22
+972 3 648 66 66
david_hasky@eastec.co.il

Italy

ROHDE & SCHWARZ ITALIA S.p.a.
Via Tiburtina 1182
00156 Roma

+39 06 41 59 82 18
+39 06 41 59 82 70

Centro Direzionale Lombardo
Via Roma 108
20060 Cassina de' Pecchi (MI)

+39 02 95 70 42 03
+39 02 95 30 27 72

Japan

ADVANTEST Corporation
RS Sales Department
Shinjuku-NS Building, 4-1
Nishi-Shinjuku
Tokyo 163-08

+81 3 33 42 75 53
+81 3 53 22 72 70
RSSales@advantest.co.jp

Jordan

Jordan Crown
Engineering & Trading Co.
Jabal Amman,
Second Circle
Youssef Ezzideen Street
P.O. Box 830414
Amman, 11183

+962 6 462 17 29
+962 6 465 96 72
jocrown@jgo.com.jo

Kazakhstan

ROHDE & SCHWARZ Kazakhstan
Representative Office Almaty
Pl. Respubliki 15
480013 Almaty

+7 32 72 63 55 55
+7 32 72 63 46 33

Kenya

Excel Enterprises Limited
Dunga Road
P.O. Box 42 788
Nairobi

Phone
Fax
E-mail

+254 2 55 80 88
+254 2 54 46 79

Korea

Rohde & Schwarz Korea Ltd.
83-29 Nonhyun-Dong, Kangnam-Ku
Seoul, KOREA 135-010
Kagnam P.O. Box 1458, Seoul Korea

+82 2 514 45 46
+82 2 514 45 49
sales@rskor.rohde-schwarz.com
service@rskor.rohde-schwarz.com

Kuwait

Group Five Trading & Contracting Co.
P.O. Box 26645
Safat 13127

+965 244 91 72
+965 244 95 28

Latvia

Rohde & Schwarz Danmark A/S
Latvian Branch Office
Merkela iela 21-301
1050 Riga

+371 7 50 23 55
+371 7 50 23 60
rsdk@rsdk.rohde-schwarz.com

Lebanon

Rohde & Schwarz Liaison Office
c/o Haji Abdullah Alireza Co. Ltd.
P.O. Box 361
Riyadh 11411

+966 1 465 64 28-303
+966 1 465 64 28-229

Liechtenstein see Switzerland

Lithuania

Rohde & Schwarz Danmark A/S
Lithuanian Office
Lukiskiu 5-228
2600 Vilnius

+370 2 22 46 62
+370 2 22 46 62

Luxembourg see Belgium

Malaysia

DAGANG TEKNIK SDN. BHD.
No. 9, Jalan SS 4D/2
Taman People's Park
47301 Petaling Jaya
Selangor Darul Ehsan

+60 3 703 55 68
+60 3 703 34 39
danik@trn.net.my

ROHDE & SCHWARZ International
Regional Office South East Asia
3rd Floor, Wisma Prima,
17 Jalan Sri Sematnan 1
Damasara Heights
50490 Kuala Lumpur

+60 3 254 00 33
+60 3 254 24 33
amelah.mutalib@rsgsk.rohde-schwarz.com

Malta

ITEC – International Technology Ltd.
B'Kara Road
San Gwann SGN 08

Phone
Fax
E-mail

+356 3 743 00
+356 3 743 53
sales@itec.com.mt

Mexico

Communications equipment:
ELECTROINGENIERIA de Precisión
S.A. (EPSA)
Uxmal 520
Colonia Vertiz Narvarte
03600 Mexico D.F.

+52 5 559 76 77
+52 5 575 33 81
rwel@epsa-mex.com

T&M equipment:
Tektronix S.A. de C.V.
Periferico sur 5000, Piso 8
Col. Insurgentes Cuicuilco
Del. Coyoacán
04530 Mexico, D.F.

+52 5 666 63 33
+52 5 666 63 36

Nepal

Abishek Trade Links (P) Ltd.
P.O. Box 9700
Kathmandu

+977 1 25 69 30
+977 1 24 25 73
darbar@hotel-nus.com.np

Netherlands

ROHDE & SCHWARZ NEDERLAND B.V.
Perkinsbaan 1
3439 ND Nieuwegein

+31 30 600 17 00
+31 30 600 17 99
info@rissn.rohde-schwarz.com

New Zealand

Nichecom
Level 1 Tawa Plaza
210 Main Rd
Tawa, Wellington

+64 4 232 32 33
+64 4 232 32 30
rob@nichecom.co.nz

Nicaragua see Mexico (EPSA)**Nigeria**

Ferrostaal (Nigeria) Ltd.
27/29 Adeyemo Alkajja Street
P.O. Box 72021
Victoria Island, Lagos

+234 1 262 00 60
+234 1 262 00 64

Norway

ROHDE & SCHWARZ NORGE
Olaf Helsetts vei 1
0694 Oslo

+47 23 38 66 00
+47 23 38 84 70

Oman

T&M equipment and Broadcasting
Mustafa Sultan
Science & Industry Co. LLC.
P.O. Box 3340
Post Code 112
Ruwi

Phone
Fax
E-mail

+968 60 20 09
+968 60 70 66
saleam@omantel.net.om

Pakistan

TelcoNet Communications & Engineering
42-A, Margalla Road, F-8/3
Islamabad

+92 51 226 31 20
+92 51 226 32 11
tnr@brain-net.pk

Panama see Mexico (EPSA)**Papua New Guinea** see Australia**Peru**

BMP INGENIEROS S.A.
Av. José Gálvez Barrenechea 645
Urb. Corpac - San Borja
Lima 41

+51 1 225 40 30
+51 1 475 15 13
winkelgareja@bimp.com.pe

Philippines

MARCOM Industrial Equipment, Inc.
6-L Mezzanine Suite, Verrida I
Condominium 120 Amorsolo St.
Legaspi Village
Makati City/Philippines 3117

+63 2 813 29 31
+63 2 817 05 07
marcom@i-net.net

Poland

ROHDE & SCHWARZ Österreich SP. z o.o.
ul. Stawki 2, Pietro 28
00-193 Warszawa

+48 22 860 64 94
+48 22 860 64 99
rohdepl@rsos.rohde-schwarz.com

Portugal

TELERUS
Sistemas de Telecomunicações, S.A.
Rua General Ferreira Martins,
Lote 6, 2.º B
1495-137 Algés

+351 21 412 35 90
+351 21 412 36 00
telurus@mail-telepac.pt

Romania

ROHDE & SCHWARZ
Representation Office Bucharest
Str Uranus 98
Sc. 2, etaj 5, ap. 36
76102 Bucuresti, Sector 5

+40 1 410 68 46
+40 1 411 20 13
rohdro@rsos.rohde-schwarz.com

Russian Federation

ROHDE & SCHWARZ
Representative Office Moscow
Kazacij per. 7
109017 Moscow

Phone
Fax
E-mail

+7 095 234 49 62
+7 095 234 49 63
rohde@russia.rohde-schwarz.com

Saudi Arabia

Rohde & Schwarz International GmbH
c/o Haji Abdullah Alireza Co. Ltd.
P.O. Box 361
Riyadh 11411

+966 1 465 64 28 -303
+966 1 465 07 82 -229

Singapore

Sales
INFOTEL TECHNOLOGIES LTD.
9 Tai Seng Drive
#02-01 HeShe Building
Singapore 535227

+652 87 68 22
+652 84 95 55
general@infotel.com.sg

Service:
ROHDE & SCHWARZ
Support Centre Asia Pte Ltd
1 Kaki Bukit View
#04-05/07 Techview
Singapore 415941

+658 46 37 10
+658 46 00 29
rsca@rsg.rohde-schwarz.com

Slovakia

Specialne systémy a software, a.s.
Svrčic ul
84104 Bratislava

+42 7 65 42 25 29
+42 7 65 42 07 68
3s@internet.sk

Slovenia

ROHDE & SCHWARZ
Representation Ljubljana
Tbilisjska 89
1000 Ljubljana

+386 1 423 46 51
+386 1 423 46 11
rohde@rsan.rohde-schwarz.com

South Africa

Protea Data Systems (Pty) Ltd.
Communications & Measurement Division
Private Bag X19
Bramley 2018

+27 11 719 57 00
+27 11 786 58 91
coln.forbes@protea.co.za

Spain

ROHDE & SCHWARZ ESPAÑA S.A.
Salcedo, 11
28034 Madrid

+34 91 334 10 70
+34 91 329 05 06
rsae@rsoes.es

Sri Lanka

LANKA AVIONICS
65B/1/1, Negombo Road
Mattumagala
Ragama

+94 1 95 66 78
+94 1 95 83 11
lankavo@slrnet.lk

Sudan

SolarMan Co. Ltd.
P.O. Box 11 545
North of Fraouq Cementry 6/7/9 Bldg. 16
Karthoum

Phone
Fax
E-mail

+249 11 47 31 08
+249 11 47 31 38
solarman29@hotmail.com

Sweden

ROHDE & SCHWARZ SVERIGE AB
Flygfaltsgatan 15
12830 Skarpnäck

+46 8 605 19 00
+46 8 605 19 80
info@rsw.se

Switzerland

ROSCHI ROHDE & SCHWARZ AG
Papiermühlestrasse 145
3063 Ittigen

+41 31 922 15 22
+41 31 921 81 01
sales@roschi.rohde-schwarz.com
support@roschi.rohde-schwarz.com

Syria

Electro Scientific Office
Baghdad Street
Dawara Clinical Lab. Building
P.O. Box 8162
Damascus

+963 11 231 59 74
+963 11 231 88 75

Tanzania

Security Systems (T) Ltd.
P.O. Box 7512
Dunga Street Plot 343 / 345
Dar Es Salaam

+255 22 276 00 37
+255 22 276 02 93
ssf@twiga.com

Taiwan

Lancer Communication Co., LTD
16F, No. 30, Pei-Ping East Road
Taipei

+886 2 23 95 10 02
+886 2 23 95 62 83
rsqj_ho@lancercomm.com.tw

Thailand

Communications equipment:
TPP Operation Co., Ltd
41/5 MoobanTarinee
Boromrajchonnee Rd.
Talingchan, Bangkok 10170

+66 2 880 93 47
+66 2 880 93 47

T&M equipment:

Schmidt Scientific (Thailand) Ltd
63 Government Housing Bank Bldg.
Tower II, 19th Floor, Rama 9 Rd.,
Huaykwang, Bangkok, Bangkok 10320

+66 2 643 13 30-9
+66 2 643 13 40
karnphon@schmidtthailand.com

Turkey

ROHDE & SCHWARZ
Liaison Office Istanbul
Bagdad Cad. 191/3, Ard
81030 Selamicesme-Istanbul

Phone
Fax
E-mail

+90 216 385 19 17
+90 216 385 19 18
rsturk@superonline.com

Ukraine

ROHDE & SCHWARZ
Representative Office Kiev
252042 Kiev
4, Patris Loumoumba ul

+380 44 268 60 55
+380 44 268 83 64
rohdeukr@rohde-schwarz.com

United Arab Emirates

Service-Center for the Middle East:
ROHDE & SCHWARZ Emirates L.L.C
P.O. Box 31156
Abu Dhabi

+971 2 631 20 40
+971 2 631 30 40

Sales:
ROHDE & SCHWARZ
Liaison Office Middle East
P.O. Box 311 56
Abu Dhabi

+971 2 633 56 70
+971 2 633 56 71

ROHDE & SCHWARZ
Liaison Office Dubai
P.O. Box 5267
Dubai

+971 4 394 48 29
+971 4 394 47 94
kahsan@emirates.net.ae

R&S BICK Mobile Communication
P.O. Box 17466
JAFZ, PPU ZG-07
Dubai

+971 4 883 71 35
+971 4 883 71 36

United Kingdom

ROHDE & SCHWARZ UK Ltd
Ancells Business Park
Fleet, Hampshire GU 51 2UZ

+44 12 52 81 13 77
+44 12 52 81 14 47
sales@rsuk.rohde-schwarz.com

Uruguay

AEROMARINE Ltda
Cerro Largo 1497
11200 Montevideo

+598 2 400 39 62
+598 2 401 85 97
aeromar@adinet.com.uy

USA

Communications equipment:
ROHDE & SCHWARZ Inc
7150 - K Riverwood Drive
Columbia, MD 21046

Phone
Fax
E-mail

+1 410 901 78 00
+1 410 910 78 01

T&M products
Tektronix Inc
2540 SW Allen Blumlein Way
P.O. Box 500, M/S 58-905
Beaverton, OR 97077-0001

+1 800 08 33-92 00

buy@tektronix.com

T&M systems
2540 SW Allen Blumlein Way
M/S 58-925
Beaverton, OR 97077-0001

+1 503 627 26 84
+1 503 627 25 65

info@rsa.rohde-schwarz.com

Venezuela

EQUILAB TELECOM C.A.
Centro Seguros La Paz
Piso 6, Local E-61
Aya Francisco de Miranda
Bolenta, Caracas 1070

+58 2 12 34 46 26
+58 2 122 39 52 05

r_ram@equilabtelecom.com.ve

Military customers only:
REPRESENTACIONES BOPIC S.A.
Calle C-4, Ota San Jose
Urb. Caunmare
Caracas 1061

+58 212 985 21 29
+58 212 985 39 94

web@bopic.net

Vietnam

Schmidt Vietnam Co., Ltd
8/F. Schmidt Tower, Hanoi
Cau Gray, Tu Liem, IPO Box 89
Hanoi

+84 4 834 61 86
+84 4 834 61 88

vn@rs@schmidtnoab.com

Yugoslavia see Austria**For countries not listed:**

ROHDE & SCHWARZ
INTERNATIONAL GmbH
P.O. Box 80 14 69
81614 Munchen | Germany
Please fax to

+49 89 4129-136 62



www.rohde-schwarz.com



PD 757 1431 28 Printed in Germany 11/01 (B) (d/b)



ROHDE & SCHWARZ

ROHDE & SCHWARZ GmbH & Co. KG
Mühlhofstraße 15 · 81671 München
Phone +49 89 41 29-0 · Fax +49 89 41 29-121 64

Increased support and service

Rohde & Schwarz expands US sales network for audio analyzers

■ **113th AES Convention, Los Angeles** — Rohde & Schwarz, the European market leader in audio analyzers, is strengthening its commitment to the US market. By expanding its sales network, the company wants to provide its numerous customers and partners with improved onsite support and service. The network includes twelve new representatives, thus covering the entire US market. By taking this action, Rohde & Schwarz intends to expand its market share worldwide.

All representatives and sales activities are coordinated from sales headquarters in Beaverton, Oregon, handling exclusively audio analyzers. Rohde & Schwarz markets and sells a broad scope of audio analyzers for analog and digital testing of audio components. The portfolio of successful products such as the analog R&S UPA and the R&S UPD now features the R&S UPL as well.

Contact address for readers:

Rohde & Schwarz GmbH & Co. KG, Mühlhofstr. 15, D-81671 München

Tel.: +49 89 4129-13779, Fax: +49 89 4129-13777, E-Mail: customersupport@rsd.rohde-schwarz.com

Rohde & Schwarz

The Rohde & Schwarz group of companies with headquarters in Munich develops, produces and markets communications, information and T&M instruments and systems with the emphasis on mobile radio, broadcasting, EMC measurements, general-purpose and RF test equipment, radiomonitoring and radiolocation, radiocommunications as well as IT security. Rohde & Schwarz has subsidiaries and representatives in over 70 countries. The group with its more than 5.000 employees achieves an annual turnover in excess of one billion Euro worldwide.

All press releases are available on Internet at <http://www.press.rohde-schwarz.com>.

Relay switching matrix for audio measurements available in two models

New audio switcher for surround instruments

■ **113th AES Convention, Los Angeles** —The new Audio Switcher UPZ from Rohde & Schwarz permits analog outputs of surround instruments to be connected to the two input channels of Audio Analyzer UPL for measurements. Any input can be connected to either of the two outputs. This considerably speeds up and simplifies measurements.

Most surround instruments are currently equipped with six (sometimes up to eight) analog outputs. The switcher is required to connect the analog outputs of the DUT to the two input channels of the audio analyzer. The audio switcher is a relay switching matrix with eight inputs and two outputs. Any input can be connected to either of the two outputs. If several channels are required, switchers can be cascaded. Since the audio-typical XLR connector system only allows a male connector to be connected to a female connector, UPZ is available in two models. The input switcher is equipped with eight female inputs and two male outputs while the output switcher has eight male outputs and two female inputs.

Contact address for readers:

Rohde & Schwarz GmbH & Co. KG, Mühldorfstr. 15, D-81671 München

Tel.: +49 89 4129-13779, Fax: +49 89 4129-13777, E-Mail: customersupport@rsd.rohde-schwarz.com

Rohde & Schwarz

The Rohde & Schwarz group of companies with headquarters in Munich develops, produces and markets communications, information and T&M instruments and systems with the emphasis on mobile radio, broadcasting, EMC measurements, general-purpose and RF test equipment, radiomonitoring and radiolocation, radiocommunications as well as IT security. Rohde & Schwarz has subsidiaries and representatives in over 70 countries. The group with its more than 5.000 employees achieves an annual turnover in excess of one billion Euro worldwide.

All press releases are available on Internet at <http://www.press.rohde-schwarz.com>.

Rohde & Schwarz extends functions of Audio Analyzer UPL

Fast measurements on audio decoders

■ **113th AES Convention, Los Angeles — Measurements on audio decoders can now be carried out easily thanks to the new functions added to Audio Analyzer UPL from Rohde & Schwarz. Coded test signals can be output directly by the measuring instrument. Complete test sequences can also be performed for all standard measurements. Thanks to a library containing several thousand preset signals, measurements can be performed in next to no time.**

Modern audio technology is increasingly using coded audio formats in surround applications. Up to now, the play-back units used in applications of this type could only be measured with the aid of complex and time-consuming procedures. With the new option for Audio Analyzer UPL from Rohde & Schwarz, measurements on audio decoders can be carried out quickly and easily.

The option enables UPL to directly output coded test signals. In addition, complete test sequences permit all measurements to be performed in line with current standards. To achieve short measurement times and fast sweeps, single and short test signals are taken from a library containing several thousand files and combined to form a sequence. Sequence advance is in sync with the analyzer. This considerably simplifies operation (look and feel). Long complex waveforms can be stored on the hard disk in wav-format and directly played back by UPL.

Contact address for readers:

Rohde & Schwarz GmbH & Co. KG, Mühldorfstr. 15, D-81671 München
Tel.: +49 89 4129-13779, Fax: +49 89 4129-13777, E-Mail: customersupport@rsd.rohde-schwarz.com

Rohde & Schwarz

The Rohde & Schwarz group of companies with headquarters in Munich develops, produces and markets communications, information and T&M instruments and systems with the emphasis on mobile radio, broadcasting, EMC measurements, general-purpose and RF test equipment, radiomonitoring and radiolocation, radiocommunications as well as IT security. Rohde & Schwarz has subsidiaries and representatives in over 70

ROHDE & SCHWARZ GmbH & Co. KG · Press Office

D-81671 München · Mühldorfstr. 15 · Tel. +4989/4129-11765 · Fax +4989/4129-13208 · www.rohde-schwarz.com

countries. The group with its more than 5.000 employees achieves an annual turnover in excess of one billion Euro worldwide.

All press releases are available on Internet at <http://www.press.rohde-schwarz.com>.

ROHDE & SCHWARZ GmbH & Co. KG · Press Office

D-81671 München · Mühlendorfstr. 15 · Tel. +4989/4129-11765 · Fax +4989/4129-13208 · www.rohde-schwarz.com

08/00 (hü pe)

PD 757.5766.01



ROHDE&SCHWARZ

Rohde & Schwarz GmbH & Co. KG · Press Office · Muehldorfstrasse 15 · 81671 Muenchen, Germany · Tel. (+49 89) 41 29-117 65 · Fax (+49 89) 41 29-132 08
www.rohde-schwarz.com

Increased support and service

Rohde & Schwarz expands US sales network for audio analyzers

■ 113th AES Convention, Los Angeles — Rohde & Schwarz, the European market leader in audio analyzers, is strengthening its commitment to the US market. By expanding its sales network, the company wants to provide its numerous customers and partners with improved onsite support and service. The network includes twelve new representatives, thus covering the entire US market. By taking this action, Rohde & Schwarz intends to expand its market share worldwide.

All representatives and sales activities are coordinated from sales headquarters in Beaverton, Oregon, handling exclusively audio analyzers. Rohde & Schwarz markets and sells a broad scope of audio analyzers for analog and digital testing of audio components. The portfolio of successful products such as the analog R&S UPA and the R&S UPD now features the R&S UPL as well.

Contact address for readers:

Rohde & Schwarz GmbH & Co. KG, Mühldorfstr. 15, D-81671 München

Tel.: +49 89 4129-13779, Fax: +49 89 4129-13777, E-Mail: customersupport@rsd.rohde-schwarz.com

Rohde & Schwarz

The Rohde & Schwarz group of companies with headquarters in Munich develops, produces and markets communications, information and T&M instruments and systems with the emphasis on mobile radio, broadcasting, EMC measurements, general-purpose and RF test equipment, radiomonitoring and radiolocation, radiocommunications as well as IT security. Rohde & Schwarz has subsidiaries and representatives in over 70 countries. The group with its more than 5.000 employees achieves an annual turnover in excess of one billion Euro worldwide.

All press releases are available on Internet at <http://www.press.rohde-schwarz.com>.

ROHDE & SCHWARZ GmbH & Co. KG · Press Office

D-81671 München · Mühldorfstr. 15 · Tel. +4989/4129-11765 · Fax +4989/4129-13208 · www.rohde-schwarz.com

Relay switching matrix for audio measurements available in two models

New audio switcher for surround instruments

■ **113th AES Convention, Los Angeles** —The new Audio Switcher UPZ from Rohde & Schwarz permits analog outputs of surround instruments to be connected to the two input channels of Audio Analyzer UPL for measurements. Any input can be connected to either of the two outputs. This considerably speeds up and simplifies measurements.

Most surround instruments are currently equipped with six (sometimes up to eight) analog outputs. The switcher is required to connect the analog outputs of the DUT to the two input channels of the audio analyzer. The audio switcher is a relay switching matrix with eight inputs and two outputs. Any input can be connected to either of the two outputs. If several channels are required, switchers can be cascaded. Since the audio-typical XLR connector system only allows a male connector to be connected to a female connector, UPZ is available in two models. The input switcher is equipped with eight female inputs and two male outputs while the output switcher has eight male outputs and two female inputs.

Contact address for readers:

Rohde & Schwarz GmbH & Co. KG, Mühldorfstr. 15, D-81671 München

Tel.: +49 89 4129-13779, Fax: +49 89 4129-13777, E-Mail: customersupport@rsd.rohde-schwarz.com

Rohde & Schwarz

The Rohde & Schwarz group of companies with headquarters in Munich develops, produces and markets communications, information and T&M instruments and systems with the emphasis on mobile radio, broadcasting, EMC measurements, general-purpose and RF test equipment, radiomonitoring and radiolocation, radiocommunications as well as IT security. Rohde & Schwarz has subsidiaries and representatives in over 70 countries. The group with its more than 5.000 employees achieves an annual turnover in excess of one billion Euro worldwide.

All press releases are available on Internet at <http://www.press.rohde-schwarz.com>.

ROHDE & SCHWARZ GmbH & Co. KG · Press Office

D-81671 München · Mühldorfstr. 15 · Tel. +4989/4129-11765 · Fax +4989/4129-13208 · www.rohde-schwarz.com

Rohde & Schwarz extends functions of Audio Analyzer UPL

Fast measurements on audio decoders

■ **113th AES Convention, Los Angeles — Measurements on audio decoders can now be carried out easily thanks to the new functions added to Audio Analyzer UPL from Rohde & Schwarz. Coded test signals can be output directly by the measuring instrument. Complete test sequences can also be performed for all standard measurements. Thanks to a library containing several thousand preset signals, measurements can be performed in next to no time.**

Modern audio technology is increasingly using coded audio formats in surround applications. Up to now, the play-back units used in applications of this type could only be measured with the aid of complex and time-consuming procedures. With the new option for Audio Analyzer UPL from Rohde & Schwarz, measurements on audio decoders can be carried out quickly and easily.

The option enables UPL to directly output coded test signals. In addition, complete test sequences permit all measurements to be performed in line with current standards. To achieve short measurement times and fast sweeps, single and short test signals are taken from a library containing several thousand files and combined to form a sequence. Sequence advance is in sync with the analyzer. This considerably simplifies operation (look and feel). Long complex waveforms can be stored on the hard disk in wav-format and directly played back by UPL.

Contact address for readers:

Rohde & Schwarz GmbH & Co. KG, Mühldorfstr. 15, D-81671 München

Tel.: +49 89 4129-13779, Fax: +49 89 4129-13777, E-Mail: customersupport@rsd.rohde-schwarz.com

Rohde & Schwarz

The Rohde & Schwarz group of companies with headquarters in Munich develops, produces and markets communications, information and T&M instruments and systems with the emphasis on mobile radio, broadcasting, EMC measurements, general-purpose and RF test equipment, radiomonitoring and radiolocation, radiocommunications as well as IT security. Rohde & Schwarz has subsidiaries and representatives in over 70

ROHDE & SCHWARZ GmbH & Co. KG · Press Office

D-81671 München · Mühldorfstr. 15 · Tel. +4989/4129-11765 · Fax +4989/4129-13208 · www.rohde-schwarz.com

countries. The group with its more than 5.000 employees achieves an annual turnover in excess of one billion Euro worldwide.

All press releases are available on Internet at <http://www.press.rohde-schwarz.com>.

ROHDE & SCHWARZ GMBH & CO. KG

ROHDE & SCHWARZ GMBH & CO. KG
Mühlhörnstr. 15
D-81671 München

ROHDE & SCHWARZ GmbH & Co. KG · Press Office

D-81671 München · Mühlhörnstr. 15 · Tel. +4989/4129-11765 · Fax +4989/4129-13208 · www.rohde-schwarz.com