

K2 InSync

AUTOMATIC FILE-SYNCHRONIZATION APPLICATION

K2 InSync automatic mirroring software keeps your servers synchronized via file transfers. This synchronization remains independent of the automation system and does not tie up router channels.

The Grass Valley™ K2 media server/media client system is ideal for broadcast and production environments, offering support for a wide range of applications to address specific workflow needs in the most cost-efficient and cost-effective ways possible.

Cost-Effective, Automated File Synchronization

Many broadcast and production installations require server-mirroring technology to keep their assets secure, streamline their workflows, and minimize downtime.

For effective mirroring, the file system on two servers needs to be synchronized. Conventional automation systems do so by using a dual-ingest or automatic-synchronization method. But these approaches add either cost or complexity. Under a dual-ingest approach, a signal is fed into a main and backup server and recorded in parallel. Unfortunately, this approach requires more router control points, is more complex to set up, and relies on an application, such as automation, to roll two channels synchronously.

Using automation for synchronization usually requires an extra-cost option to either perform the dual ingest outlined above or to synchronize file systems where files are ingested on one system and sent via file-transfer protocol (FTP) to the backup.

By contrast, the K2 InSync™ application automatic mirroring software keeps your servers synchronized via file transfers. This synchronization remains independent of the automation system and does not tie up router channels. As a result, the software provides a cost-effective and automated method for keeping two files system synchronized.

Simplifying Operations, Promoting Efficiency

InSync software can simplify your operations and in some cases provide better utilization of your hardware.

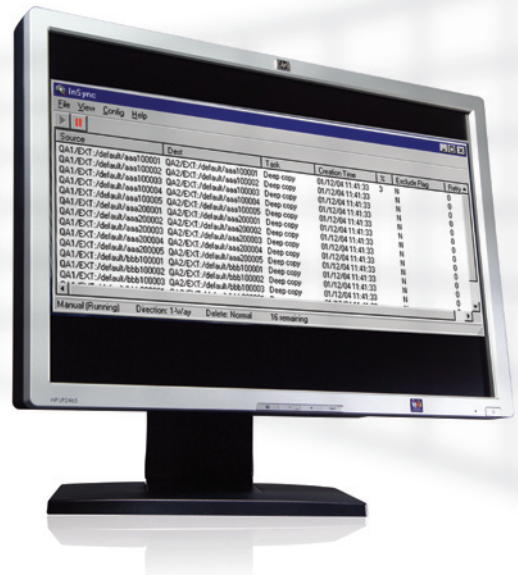
For instance, it's easy to add a mirrored server via the InSync application to an environment in which an automation system controls a server for ingest and playout. To the automation system, InSync is transparent and, since the file systems are always synchronized, if the

master fails, automation simply switches to the backup and continues.

InSync software also makes the most of your hardware resources. In most mirrored configurations, the backup server is not used until there is a failure and it generally has an encoder for ingesting material. With the InSync application set to bi-directional mode, you can use encoders in both the main and backup servers so any file ingested on the backup will be replicated on the main. Thus you get better utilization of your hardware, and big costs savings, especially when working with high-definition (HD) material.

File Filters

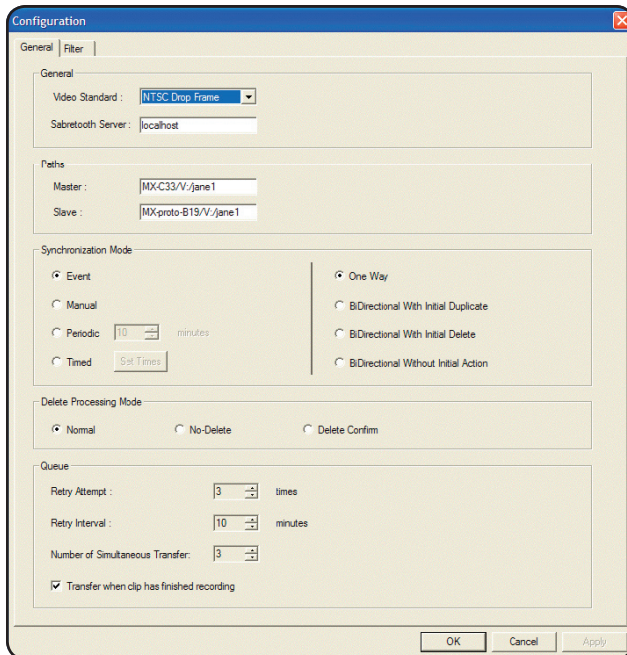
Another advanced mode of the InSync software is its ability to synchronize only specific files using custom filters (see key features). You can tailor these filters to synchronize files based on such things as folder location, clip duration, creation dates, or recording formats.



KEY FEATURES

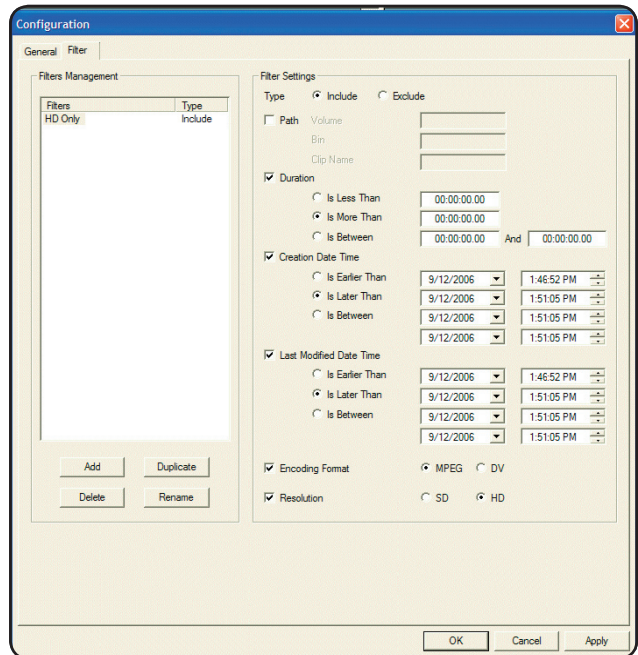
- Multiple configuration modes for operational flexibility:
 - One way
 - Bi-directional
 - Bi-directional/initial delete
 - Bi-directional/initial duplication
 - Bi-directional without initial action
- Customizable file filters:
 - Path
 - Duration
 - Creation date/time
 - Last modified date/time
 - Encoding format (DV or MPEG)
 - Resolution (SD or HD)

Easy Setup



InSync software is simple to set up. You can define all settings on one page.

Powerful Filters



Powerful file filters let you customize InSync software to fit your exact needs and workflow.

SPECIFICATIONS

Configurations

Runs on any K2-based system – does not require a separate PC

- Standalone to standalone
- Shared storage to shared storage
- Standalone to shared storage
- Shared storage to standalone

Requires K2 system software v3.1 or above, K2 Summit™ system software V7.1 or above

ORDERING INFORMATION

K2-InSync-STA

Licensed for standalone K2 systems. Synchronizes two K2 standalone systems.

K2-InSync-SAN

Licensed for K2 shared-storage systems. Synchronizes two K2 shared-storage systems or a K2 standalone and a K2 shared-storage system. One copy required for each pair of systems to be synchronized.

Free Trial

A fully functional version is available for a 30-day free trial at <http://www.grassvalley.com/products/servers/k2>. After 30 days, it will be disabled until a purchased license is obtained.

www.grassvalley.com/sales

CUSTOMER SUPPORT & PROFESSIONAL SERVICES

Our customer support and professional services offerings ensure optimal system performance and maximize uptime. These services include call centers staffed around the clock, commissioning, professional training courses, and technical maintenance programs and service agreements.

www.grassvalley.com/support

