



# Tempest<sup>®</sup>2400

## 4-Channel QuickStart Guide

### What's in the box

#### BaseStation

- CM-244 series BaseStation
- Power Cord
- 2dBi Omni-directional whip antenna (x2)
- 3.5mm to 3.5mm 3 conductor data pairing cable
  - » Used to pair a BaseStation to the BeltStation(s)
- USB-A to USB-B cable
  - » Used to update BaseStation firmware
- USB-A to Mini-USB
  - » Used to update BeltStation firmware
- BaseSync cable
  - » Used if you have more than one BaseStation
- Improves RF performance when using multiple systems
- CD with manual, T-Desk software

#### BeltStation

- CP-242 series BeltStation
- Li-Poly rechargeable battery
- 5VDC wall charger with Mini USB connector

#### Remote Transceiver (optional)

- Remote RF transceiver
- RJ-45 to RJ-45 CAT-5 cable
- 2dBi Omni-directional whip antenna (x2)
- Mounting Plate and screws

#### Directional Antenna Kit (optional)

- Directional antennas (x2)
- Mounting brackets (x2)
- Antenna Mounting Bar
- "C" Clamp Mount
- "RP-TNC" to "N" cables (x2)

#### 5 Bay Battery Charger (optional)

- Battery Charger
- AC Cable

*Note: Charge ALL BeltStation batteries prior to set-up.*

#### What else you may need


- Headset, one for each user
  - » May be dynamic or electret microphone, with a 4-PIN XLR female connector
- 3-PIN XLR cables to connect to external 2-Wire Intercom system
- RJ-45 cables to connect to external 4-Wire Intercom system
- RJ-45 cable to connect to PC for T-Desk LAN control



## Important things you need to know

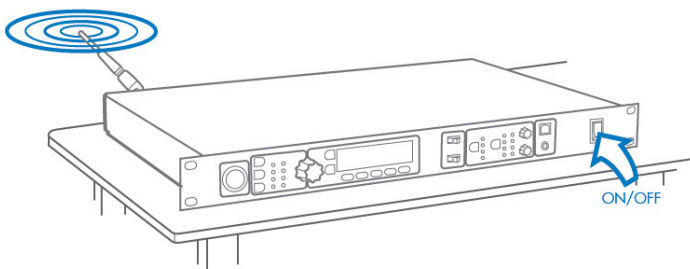
- ✓ Tempest 2400 operates in the 2400 to 2483 MHz frequency spectrum and should never be synced with 900 MHz models.
- ✓ Tempest® BaseStations and BeltStations are shipped with a default RF configuration. It is highly recommended that you change your system from the default to ensure proper RF performance especially in the presence of other Tempest systems.
- ✓ A BeltStation must be paired with a BaseStation for any communication to take place. Pairing should be done AFTER the default RF configuration is changed on the BaseStation.
- ✓ Charge the BeltStation batteries prior to starting set-up.

## 1 Select a location for the BaseStation and/or Remote Transceiver

 System range and performance may be greatly reduced if antennas are blocked or obstructed.

- Always operate the system with both antennas attached, locate as high as possible and away from all obstructions (especially metal).
- Never use antennas on the back of the BaseStation when the BaseStation is in a rack
- When using the Whip (omni-directional) antennas, always locate them as close as possible to the center of the coverage area.
- When using directional antennas, always aim them in the same general direction.
- When remotely locating antennas, use only high quality 50 ohm, low loss, RF cable (30 ft max).
- Remote antenna location of up to 1500 ft using standard CAT-5 wiring may be achieved using the optional Tempest Remote Transceiver.
  - » This must be a point to point connection
  - » Plug your Transceiver into the BaseStation prior to powering ON the BaseStation

## 2 Power ON the BaseStation



- Connect the AC power cord to the BaseStation and to the AC wall outlet.
- Turn the BaseStation on via the front panel ON/OFF switch.

## 3 Selecting the RF band

- The first time you power up the BaseStation, you will be prompted to “select an authorized band for your location”.
- There are seven RF bands that use different parts of the 2.4GHz spectrum.
- Scroll to an appropriate band for your location and press Enter to select.
- Press MENU to return to the operational screen.



*Band 1 is appropriate for most, but not all, locations worldwide (US is band 1). Some countries require that you use a limited portion of the 2.4GHz band. It is the user's responsibility to ensure that you select a band that is permitted for use in your location.*

Band	MHz			Avoid 802.11b/g
	Start	End	Wide	
1	2400	2480	80	None
2	2400	2450	50	1,1
3	2423	2473	50	1
4	2431	2480	49	1,2
5	2400	2428	28	7,8,9,10,11
6	2423	2450	27	1,11
7	2453	2480	27	1,2,3,4,5,6,7

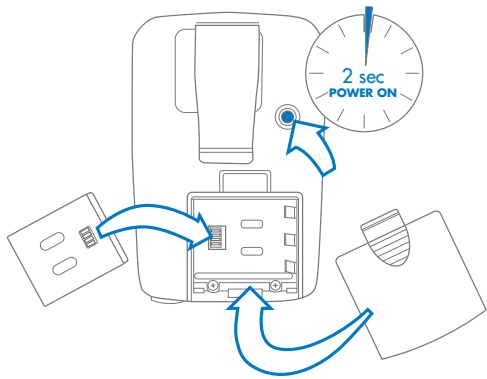
## 4 Changing the Default RF Configuration

From the front of the BaseStation, follow the steps below :

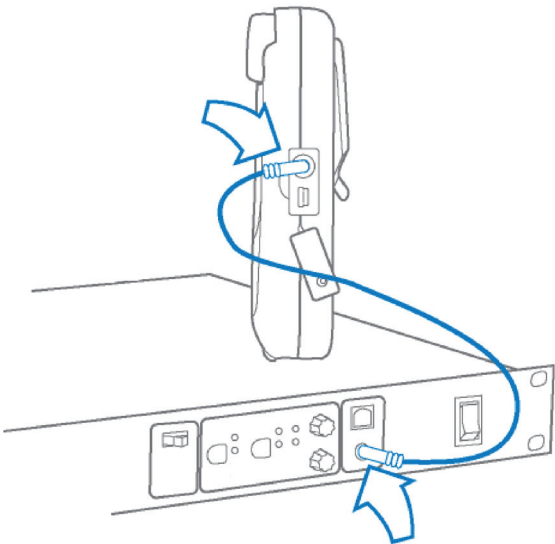
1. Press MENU (Main Menu)
2. Press 1 (BaseStation Settings).
3. Scroll to 7 (Tech Menu) and press ENTER. A Tech Menu warning message will appear - Press ENTER to proceed.
4. Press ENTER or 1 (Radio Configuration).
5. Press ENTER or 1 (Network Number) and select a network other than zero and press ENTER to save setting.
  - » If you have multiple BaseStations, ensure that you select a different Network Number for each BaseStation.
  - » Collocated BaseStations should have different network numbers separated by at least four (e.g. 1, 5, 9, 13... or 2, 6, 10, 14...)
6. Press MENU to return to previous menu; press 2 (Lockout Key) and select a lockout key other than 255 and press ENTER to save setting.
7. Press MENU repeatedly until you get back to the Operational screen.
8. Power the BaseStation OFF; wait 10 seconds and power the BaseStation ON again.

## 5 Power ON the BeltStation

- Slide the battery door off by pressing down and back.
- Install the battery or (3) AA batteries and replace the battery door.
- Press and hold the ON/OFF button for two seconds; the BeltStation will vibrate as it powers up.
- Power the BeltStation OFF by pressing and holding the ON/OFF button for four seconds.



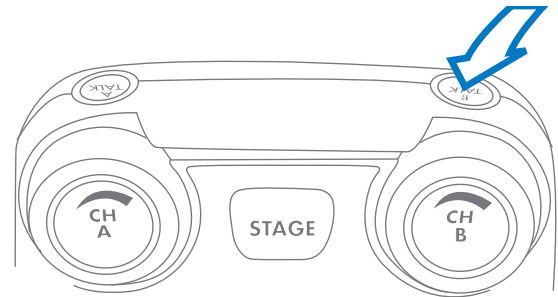
## 6 Pair BeltStations to the BaseStations



- Confirm the BaseStation is powered ON.
- Confirm the BeltStation is powered OFF.
- Connect the 3.5mm data pairing cable from the BaseStation to the BeltStation.
- Power ON the BeltStation while observing the BeltStation LCD screen; the BeltStation will vibrate and "Pairing Complete" will appear momentarily on the LCD screen if pairing was successful.
- The BeltStation will return to the operational screen and log into the BaseStation.
- The BeltStation will appear in the first available slot on the LCD screen.
- Repeat for each BeltStation.

*Note: BeltStations are named to their default setting name. They can be renamed.*

## 7 Start Communicating



- Plug a headset into each BeltStation.
- To set Mic Gain, Press MENU and scroll down to Set Controls.
- Scroll to Mic Gain and Press ENTER.
- Set the Mic Gain for the headset that you are using; speak loudly into the microphone and adjust the setting so that the blue TALK LED starts to flash red. Press ENTER to save.
- Select the desired communication channel by pressing the A/B or C/D channel selector.
- Adjust the headset listening volume by turning the A/B or C/D rotary control.
- Press the TALK button to talk to others on the selected channel (the blue flashing LED will remain lit when talk is enabled on that channel)\*
- Confirm the desired talk channel and talk status by observing the BeltStation LCD screen.

## 8 Connecting to External 2-wire Intercom Systems

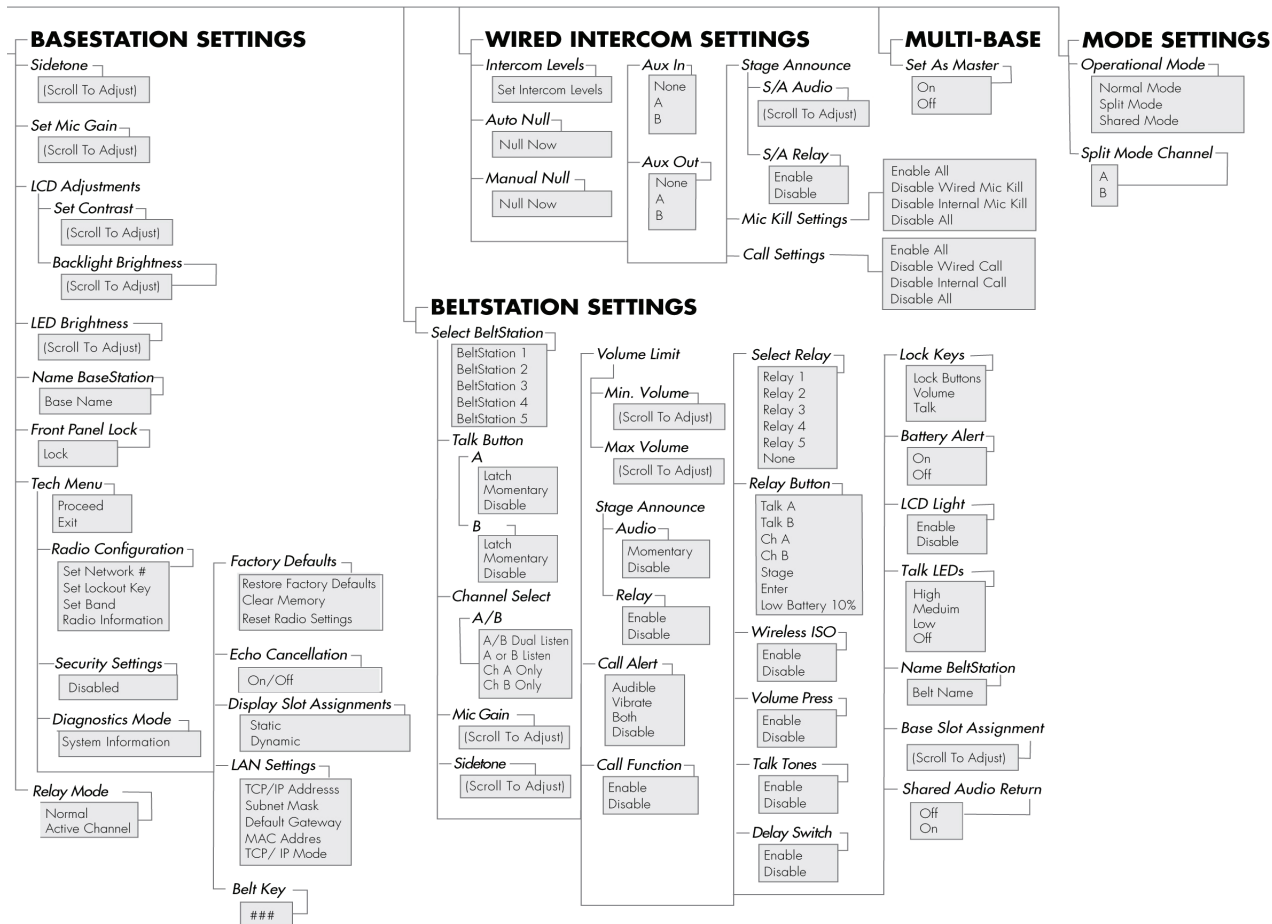
- Select the correct intercom type on the front of the BaseStation
  - » Intercom type select switch A&B controls both intercom channels A and B; C&D controls both intercom channels C and D.
  - » CLEAR-COM is used for Clear-Com and Clear-Com compatible 2-Wire systems.
  - » RTS is used for RTS and RTS compatible systems.
  - » BAL is used for Telex AudioCom & AudioCom compatible systems.
- Connect 3-PIN XLR cables to the back of the BaseStation for the appropriate channel.
- Press the left SEL button to select an intercom channel (A through D); press the right SEL button to select 2-Wire operation.
- Use the IN and OUT rotary controls to set the IN (from 2-Wire to BaseStation) and OUT (from BaseStation to 2-Wire) levels.
- Perform Auto Null from the BaseStation\*

## 9 Connecting to External 4-wire Intercom Systems

- Connect RJ-45 cables to the back of the BaseStation for the appropriate channel. *Note: The intercom type select switches do not apply to 4-Wire operation.\**
- Press the left SEL button to select an intercom channel (A through D).
- Press the right SEL button to select 4-Wire operation.
- Use the IN and OUT rotary controls to set the IN (from 4-Wire to BaseStation) and OUT (from BaseStation to 4-Wire) levels.

\*Refer to the Tempest Owner's Manual for detailed system information.

# BaseStation Menu



# BeltStation Menu

