

# TECKNET

## TeckNet Door Bell WA688



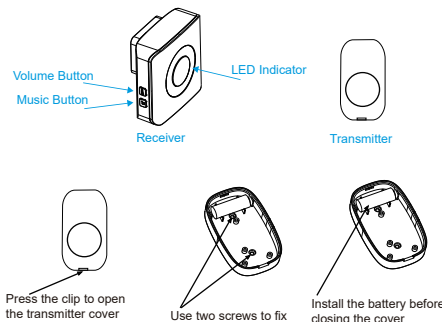
## USER MANUAL

### Welcome

Thank you for choosing this TECKNET product. To ensure optimum performance and safety, please read these instructions carefully before operating this product. It is strongly recommended you keep this manual for future reference.

The TECKNET WA688 Wireless Doorbell features 52 classic chime tones with an adjustable volume control to cater to your need. This wireless doorbell kit includes one battery operated transmitter and two AC operated receivers, the transmission range is up to 300M in open area.

### Product Layout



01

### Product Features

- High efficient eco power management which reduces power consumption.
- Powerful transmitter provides an amazing 300M transmission range in open area.
- 52 optional chime tones. You can easily select and change melody.
- Four-level adjustable volume control for each receiver.

### Product Specification

Transmitter Working Voltage:	<12V
Transmitter Power Consumption:	<12mW
Receiver Working Voltage:	AC 110V(USA), AC 220V(EU, UK, AU)
Receiver Power Consumption:	0.5W
Sound Volume:	25-85db
Working Frequency:	433.92MHZ±2MHZ

### Package Contents

- 1 x Transmitter
- 2 x Receivers
- 2 x Screws
- 2 x Screw-joint Coupling
- 1 x Battery
- 1 x Double-Side Adhesive Tape
- 1 x User Manual
- 1 x Warranty Card

### Instructions

#### Receiver Battery Installation:

Press the plastic clip to open the cover of transmitter, install the 12V/23A battery(included), then close the cover.

#### Music Selection

There are 52 chime tones for TeckNet WA688. Press the "Music" button to choose a favorite chime, every time you press the button, it would play the next chime for your selection. Once chose a chime, stop press the "Music" button.

#### Volume Adjustment

There are 4-level volumes for TeckNet WA688. Press "Volume" button to increase the volume. When the volume reaches its maximum, press the button again it would turn to minimum volume.

02

### Pairing Method

#### Receiver1:

(1) Plug one receiver into AC socket. Press the "Music switch" button, and choose a favorite chime first.

(2) Either operation below is available for pairing program.

A: Press "Volume" and "Music" button simultaneously, LED light of the receiver will flash, along with warning tone "Dingdong" to enter pairing mode.

B: Press "Volume" button for 5 seconds, LED light of the receiver will flash, along with warning tone "Dingdong" to enter pairing mode. When above either 1 or 2 step is finished, press the button of the transmitter, LED of the receiver will flash, the selected chime tone will be played at the same time, which means pairing successfully.

**Receiver2:** Pairing method is the same as Receiver 1.

#### Change Chime Tone:

No need to delete the pairing before changing the chime tone.

1. Firstly, press the "Music" button to select a new chime tone.
2. Then press "Volume" and "Music" button simultaneously; or hold the "Volume" button for 5 seconds, the LED of transmitter would flash along with warning tone "Ding-Dong" then press the button of transmitter, the receiver would play the new chime tone just selected.

#### Delete Pairing

Press "Music" button for 5 seconds to delete pairing memory. The LED would flash along with warning tone "Ding-Dong", that means the pairing is deleted.

#### Receiver and Transmitter Installation

##### Transmitter

Method 1: Adhesive Tape for Transmitter

Apply the double-sided adhesive tape on the back of transmitter case.

Remove the top layer of the tape and attach the transmitter in desired location on the wall and press hard for 30 seconds.

Method 2: Screw for Transmitter

There are screw locator knockouts at the back of transmitter - punch these out to allow the screws to pass through and use screwdriver to tighten the screws to fix it on the wall.

03

**Receiver:** Insert the receiver into AC socket directly.

Note: Please complete the music selection and pairing to make sure that the doorbell works properly before installing the receiver and transmitter.

### Maintenance

1. Ideally, use high quality alkaline batteries. This will last longer and reduce the chance of electrolyte leakage.
2. In order to protect the precision internal electronic components, it's advisable that unqualified users should not attempt to open the unit for maintenance.
3. Do not exposure to continuous direct sunlight or humid environment. this will adversely affect the unit.
4. Properly usage would extend the lifetime of the product.

### IMPORTANT SAFETY INSTRUCTIONS-CAREFULLY FOLLOW THESE INSTRUCTIONS.

1. SAVE THESE INSTRUCTIONS - This sheet contains important safety and operating instructions.
2. Before using the product, read all instructions and caution markings on the product, accessories and device using our product.
3. This appliance is not intended for use by persons (including children) with reduced physical, sensory or mental capabilities, or lack of experience and knowledge, unless they have been given supervision or instruction concerning use of the appliance by a person responsible for their safety.
4. Children should be supervised to ensure that they do not play with the appliance.
5. Keep the product away from fire or explosion may occur.
6. For indoor use only. Do not expose to rain, water, excess moisture or snow.
7. For proper insertion, please observe polarity indicators ( +/ - )
8. Remove the batteries if the mouse is not going to be used for a long period of time.
9. Do not place product in or near inflammable, explosive or hazardous object.
10. Do not place in or near water, rain, excess moisture or extreme heat.
11. Do not operate product with damaged cord or plug.
12. Do not operate product if it has been damaged in any way.
13. Do not disassemble the product. Disassembly may result in a risk of safety hazards.
14. Do not throw or shake the product
15. To reduce the risk of electric shock, unplug the product from the power supply when not in use or switch off the power supply

04

### Limited 18-Month Warranty:

#### What this warranty covers.

Shenzhen Unchain Technology Co., LTD. (Manufacturer: "Unchain") warrants to the original purchaser of this TeckNet product that the product shall be free of defects in design, assembly, material, or workmanship.

#### What the period of coverage is.

Unchain warrants the TeckNet product for 18 Months.

#### What will we do to correct problems?

Unchain will repair or replace, at its option, any defective product free of charge (except for shipping charges for the product).

#### What is not covered by this warranty?

All above warranties are null and void if the TeckNet product is not provided to Unchain for inspection upon Unchain's request at the sole expense of the purchaser, or if Unchain determines that the TeckNet product has been improperly installed, altered in any way, or tampered with. The TeckNet Product Warranty does not protect against acts of God such as flood, earthquake, lightning, war, vandalism, theft, normal-use wear and tear, erosion, depletion, obsolescence, abuse, damage due to low voltage disturbances (i.e. brownouts or sags), non-authorized program, or system equipment modification or alteration.

#### How to claim the warranty

Please contact retailers or visit TeckNet website [www.tecknet.co.uk](http://www.tecknet.co.uk) for more information

#### Disclaimer

Every effort has been made to ensure that the information and procedures in this guide are accurate and complete, no liability can be accepted for any errors or omissions and we reserve the right to make any changes without further notice to any products mentioned herein.

#### Warranty

We warrant that products purchased from authorized distributors will meet the applicable product specifications and be free from all defects in design, assembly, materials and workmanship. Please contact retailers or visit our website [www.tecknet.co.uk](http://www.tecknet.co.uk) for more information.

05