

CARPETRON 18

MODEL NO. FC 450

FORM NO. 2A-063

April 1, 1972

PARTS LIST

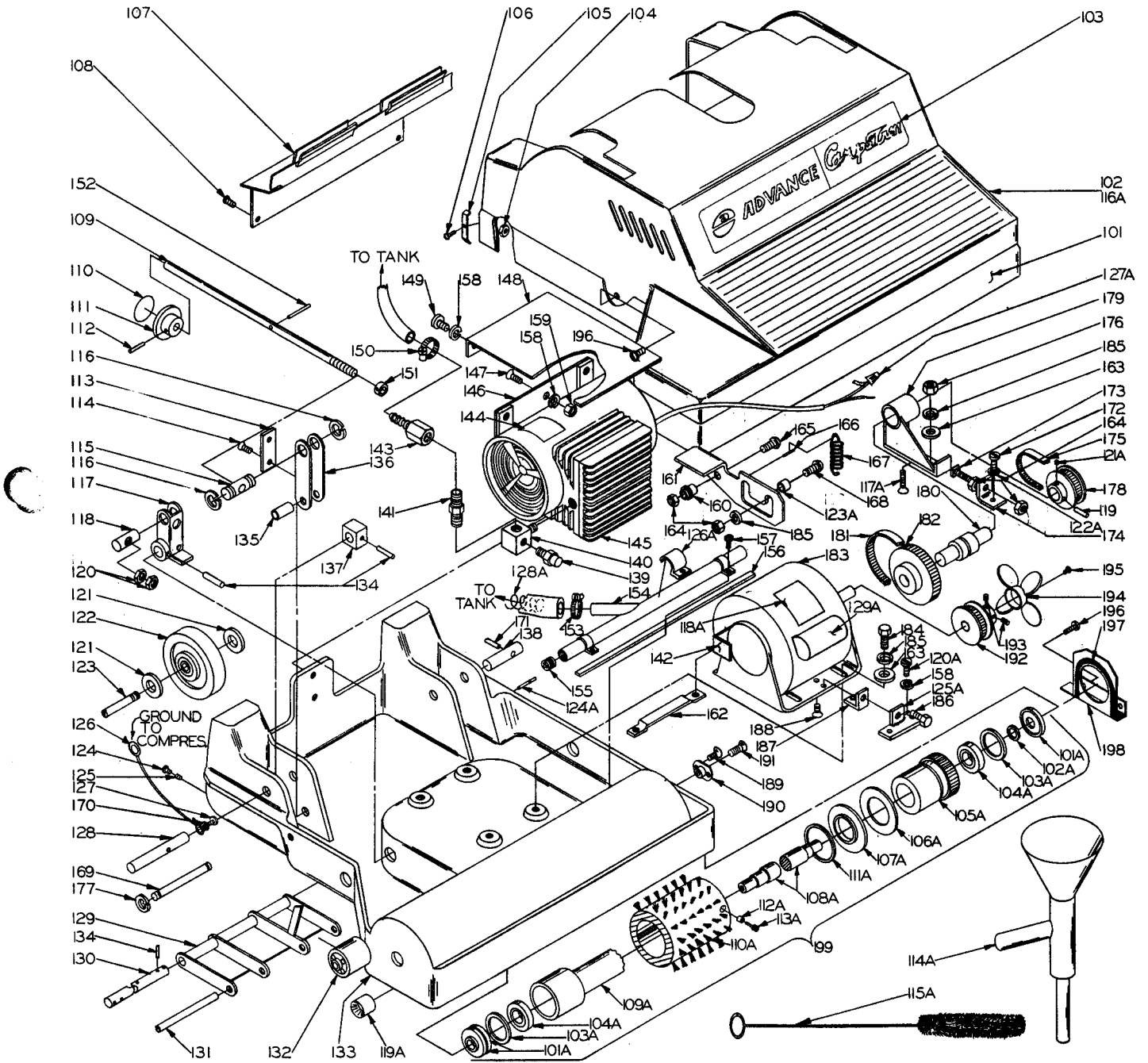


ADVANCE MACHINE COMPANY
Spring Park, Minnesota 55384

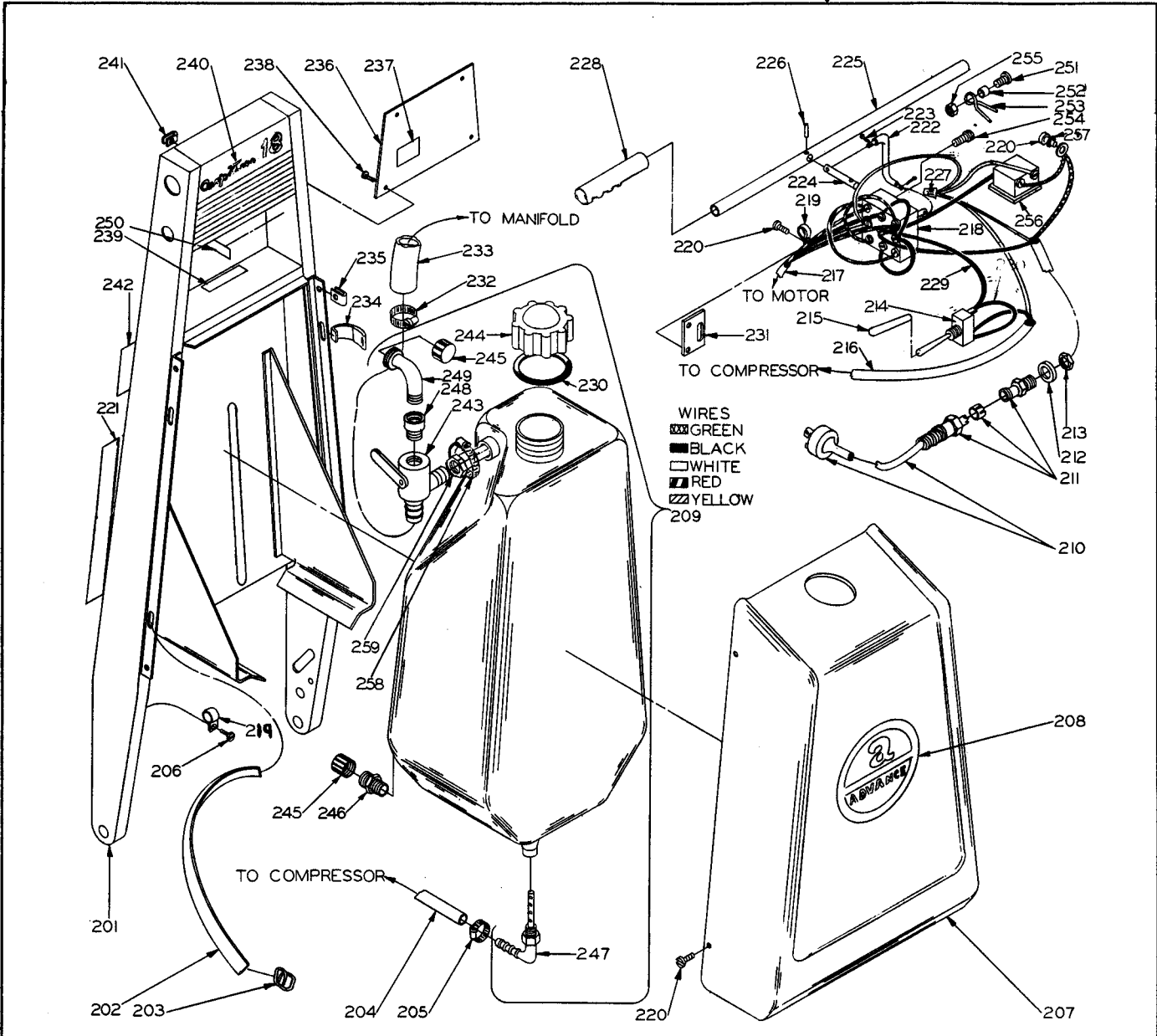
ADVANCE MACHINE COMPANY CANADA LIMITED
45 Iron Street, Rexdale Ontario, Canada

INDEX FOR FORM NUMBER 2A-063

<u>Description</u>	<u>Location</u>	<u>Page</u>
Base	C2	1
Compressor	C5	4
Handle	C4	3



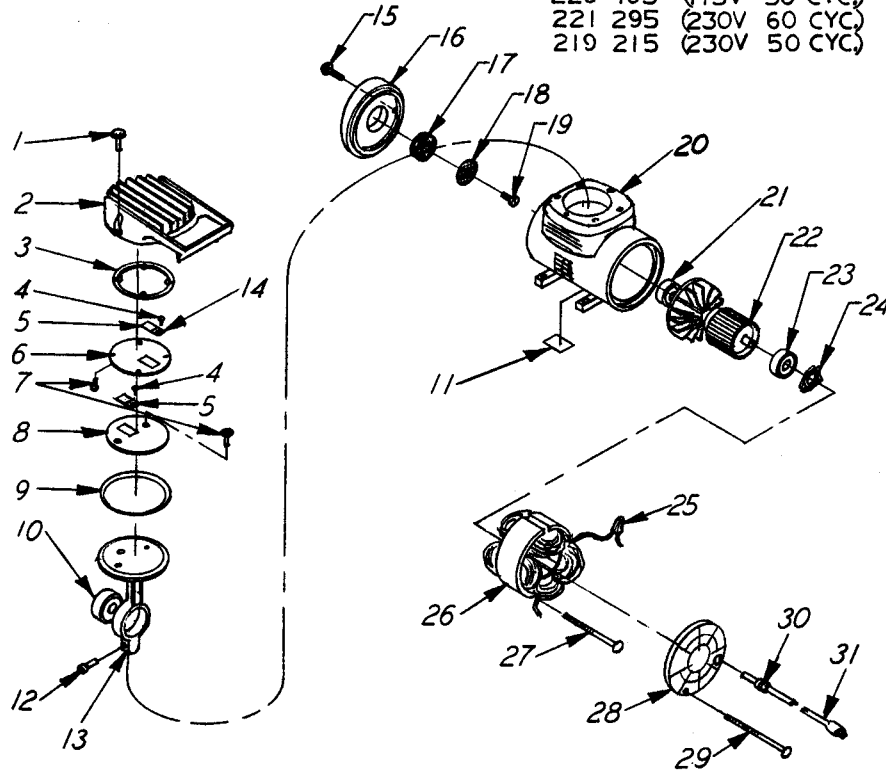
ITEM	PART NO.	QTY.	DESCRIPTION	ITEM	PART NO.	QTY.	DESCRIPTION
101	244 956	1	BUMPER	177	321 427	2	RETAINING RING
102	244 911	1	SHROUD	178	220 876	1	PULLEY
103	015 252	1	DECAL	179	244 910	1	BRACKET
104		3	NUT, Hex. 6-32	180	217 956	1	SHAFT & BEARING
105	244 846	3	CLIP	181	217 913	1	FLEX-O-GEAR
106		3	SCREW, Oval Hd. 6-32 X 1/2	182	218 650	1	PULLEY
107	244 800	1	COVER	183	217 832	1	MOTOR (115V 60 HZ)
108		4	SCREW, Pan Hd. 8-32 X 5/16	183	218 529	1	MOTOR (230V 50 HZ)
109	244 861	1	SCREW	183	220 469	1	MOTOR (115V 50 HZ)
110	023 092	1	DECAL	183	221 309	1	MOTOR (230V 60 HZ)
111	217 972	1	KNOB	184		2	SCREW, Hex. Hd. 5/16-18 X 1/2
112		1	GROOV-PIN 1/8 X 1"	185		7	LOCKWASHER, 5/16
113	244 836	1	WEAR STRIP	186		3	SCREW, Hex. Hd. 5/16-18 X 1"
114		2	SCREW, Flat Hd. 6-32 X 5/16	187	219 991	1	ANGLE
115	245 030	1	SWIVEL	188		2	SCREW, Flat Hd. 10-32 X 3/8
116	344 052	2	RETAINING RING	189		4	SCREW, Flat Hd. 10-24 X 3/8
117	244 869	1	LEVER WELDMENT	190	218 111	1	SUPPORT
118	219 169	1	NUT	191		2	SCREW, Flat Hd. Socket 5/16-18 X 3/4
119		2	SPRING PIN 3/16 X 1 1/2	192	220 752	1	PULLEY
120		2	NUT, Hex Jam, 7/16 - 14	193		2	SETSCREW, Socket 5/16 - 18 X 1/4
121	244 832	4	WASHER	194	238 201	1	FAN
122	230 448	2	WHEEL	195		2	SCREW, Rd. Hd. 4-40 X 3/16 S.T.
123	219 274	2	ACLE	196		4	SCREW, Pan Hd. 10-24 X 5/8
124		2	SCREW, Pan Hd. 10-24 X 1/4	197	244 900	1	GASKET
125		2	SETSCREW, Socket 10-24 X 1/4	198	244 898	1	SHIELD
126	251 658	1	GROUND WIRE	199	244 932	1	BRUSH ASSEMBLY
127		1	SCREW, Pan Hd. 6-32 X 1/4	101A	218 049	3	SEAL
128	244 873	1	PIN	102A	217 999	1	RETAINING RING
129	244 884	1	BRACKET WELDMENT	103A	220 108	2	SPACER
130	244 896	1	SHAFT	104A	372 773	2	BEARING
131	244 877	2	PIN	105A	218 626	1	PULLEY
132	217 948	2	ROLLER	106A	220 965	1	WASHER
133	244 904	1	BASE	107A	217 875	1	SEAL
134		5	SPRING PIN 3/16 X 1"	108A	244 926	1	SHAFT
135	244 859	1	SPACER	109A	244 930	1	SLEEVE ASSEMBLY
136	244 854	1	ARM	110A	244 928	1	BRUSH
137	244 834	1	CAM	111A	218 448	1	RETAINING RING
138	244 858	1	PIN	112A	368 997	2	BUSHING
139	257 990	1	VALVE, Relief	113A	218 073	2	CAPSCREW
140	219 798	1	ELBOW	114A	220 426	1	FUNNEL
141	218 510	1	VALVE, Check	115A	218 881	1	BRUSH CLEAN-OUT
142	245 075	1	BRACKET	116A	244 915	1	SHROUD ASSEMBLY
143	219 819	1	BARBED INSERT	117A		2	SCREW, Flat Hd. 5/16-18 X 1"
144	022 039	1	DECAL (115V 60 HZ)	118A	015 264	1	DECAL, (115V 60 HZ & 50 HZ)
144	022 047	1	DECAL (230V 50 HZ)	118A	015 164	1	DECAL, (230V 50 HZ & 60 HZ)
144	022 055	1	DECAL (115V 50 HZ)	119A	218 146	1	BUSHING
144	022 057	1	DECAL (230V 60 HZ)	120A		2	SCREW, Pan Hd. 10 - 24 X 3/8
145	217 867	1	COMPRESSOR (115V 60 HZ)	121A		2	SETSCREW, Socket 5/16-18 X 3/8
145	219 215	1	COMPRESSOR (230V 50 HZ)	122A		2	LOCKWASHER 1/4
145	220 485	1	COMPRESSOR (115V 50 HZ)	123A	244 941	1	BUSHING
145	221 295	1	COMPRESSOR (230V 60 HZ)	124A	151 122	1	PIN
146	244 921	1	PLATE	125A	244 925	1	BRACKET
147		2	SCREW, Flat Hd. 10-24 X 5/8	126A	245 076	1	STRAP
148	244 933	1	SHIELD	127A	321 737	2	WIRE NUT
149		4	SCREW, Pan Hd. 10-24 X 1/2	128A	244 010	1	SPRING
150	219 932	1	CLAMP	129A	220 908	1	CAPACITOR (115/230V - 60 HZ)
151	245 022	1	COLLAR	129A	220 918	1	CAPACITOR (115/230V - 50 HZ)
152		1	SPRING PIN 1/8 X 5/8				
153	112 771	2	CLAMP				
154	245 079	1	MANIFOLD W/Gasket & Plug				
155	245 014	2	PLUG				
156	245 092	1	GASKET				
157		5	SCREW, Pan Hd. 8-32 X 3/8				
158		8	LOCKWASHER # 10				
159		2	NUT, Hex. 10-24				
160	244 937	1	BUSHING				
161	244 945	1	LATCH ASSEMBLY				
162	218 065	1	NUT PLATE				
163		6	WASHER, Flat 5/16 S.A.E.				
164		3	NUT, Hex Hd. Jam 5/16 - 18				
165		1	SCREW, Truss 5/16 - 18 X 7/8				
166	244 939	1	PIN				
167	321 087	1	SPRING				
168		1	SCREW, Truss 5/16 - 18 X 2				
169	244 865	1	PIN				
170		1	LOCKWASHER # 6				
171		1	SPRING PIN 3/16 X 7/8				
172		1	SCREW, Pan Hd. 1/4 - 20 X 1/2 (Plated)				
173		1	MACHINE BOLT, Sq. Hd. 5/16-18 X 1 1/4				
174	244 923	1	ANGLE				
175	244 828	1	FLEX-O-GEAR				
176		3	NUT, Hex. 5/16-18				



ITEM	PART NO.	QTY.	DESCRIPTION	ITEM	PART NO.	QTY.	DESCRIPTION
201	245 044	1	HANDLE WELDMENT	230	244 979	1	GASKET
202	244 860	2	STRAP	231	245 000	1	PLATE
203	245 013	2	BUCKLE	232	112 771	1	CLAMP
204	244 991	1	HOSE	233	245 018	1	TUBE
205	219 932	1	CLAMP	234	245 017	4	GUARD
206		2	SCREW, Pan Hd. 8-32 X 1/4 Self Tapping	235	255 874	4	NUT
207	244 992	1	SHROUD	236	244 977	1	COVER
208	015 326	1	DECAL	237	015 264	1	DECAL (115V, 50 & 60 HZ)
209	244 857	1	TANK ASSEMBLY (less valve)	237	015 164	1	DECAL (230V, 50 & 60 HZ)
210	244 830	1	CORD ASSEMBLY	238		4	SCREW, Pan Hd. 6-32 X 3/8
211	162 736	1	STRAIN RELIEF	239	015 121	1	DECAL
212	200 433	1	WASHER	240	015 251	1	DECAL
213	200 441	1	NUT	241	322 504	4	NUT
214	217 859	1	SWITCH	242	015 263	1	DECAL
215	219 886	1	SLEEVE	243	245 078	1	VALVE
216	244 826	1	CORD ASSEMBLY	244	244 863	1	CAP
217	245 042	1	CORD ASSEMBLY	245	255 076	2	CAP
218	221 155	1	SWITCH	246	244 980	1	ADAPTER
219	300 152	4	CLAMP	247	244 995	1	BUBBLER
220		8	SCREW, Pan Hd. 8-32 X 3/8	248	245 074	1	ADAPTER
221	015 269	1	DECAL	249	245 072	1	ELBOW
222	244 996	1	LINKAGE	250	015 064	1	DECAL
223		2	COTTER 1/16 X 1/2	251		1	SCREW, Pan Hd. 10-24 X 1/2
224	245 004	1	PIN	252	369 004	1	BUSHING
225	245 002	1	TUBE	253	245 060	1	SPRING
226		1	SPRING PIN 1/8 X 1"	254		2	SCREW, Socket Hd. 6-32 X 3/8
227	321 737	1	WIRE NUT	255		1	NUT, Hex. 10-24
228	514 085	2	GRIP	256	245 064	1	RECEPTACLE
229	251 615	1	WIRE	257		1	LOCKWASHER #8
				258	244 969	1	CLAMP
				259	244 976	1	TUBE

PARTS LIST FOR COMPRESSOR ASSEMBLY

PART NO.'S: 217 867 (115V 60 CYC)
 220 485 (115V 50 CYC)
 221 295 (230V 60 CYC)
 219 215 (230V 50 CYC)



THOMAS IND. MODEL 905AA18

ITEM	PART NO.	QTY	DESCRIPTION	ITEM	PART NO.	QTY	DESCRIPTION
1		6	SCREW, Fillister Hd 10-24X1/2	25	321 737	2	WIRING NUT
2	220 951	1	HEAD	26	220 518	1	STATOR, 115V 60 Cycle
3	220 953	1	GASKET, Exhaust Plate		220 520	1	STATOR, 115V 50 Cycle
4		2	SCREW, Rd. Hd. 6-32 X 1/8		220 519	1	STATOR, 230V 50 Cycle
5	220 955	2	FLAPPER, Valve		220 521	1	STATOR, 230V 60 Cycle
6	220 930	1	PLATE, Exhaust Valve	27	220 522	2	SCREW
7		6	SCREW, Flat Phillips Hd. 8-32X3/8	28	220 535	1	END CAP
8	220 956	1	PLATE, Intake Valve	29	220 509	2	SCREW
9	220 949	1	DIAPHRAGM	30	163 015	1	STRAIN RELIEF
10	220 528	1	BEARING, Connecting Rod	31	220 511	1	CORD
11		1	DECAL, (115V, 60 Cycle)				
		1	DECAL, (115V, 50 Cycle)				
		1	DECAL, (230V, 50 Cycle)				
		1	DECAL, (230V, 60 Cycle)				
12		1	SCREW, Socket Cap 10-24 X 3/4				
13	220 532	1	ROD, Connecting				
14	220 963	2	KEEPER STRIP, Valve				
15		2	SCREW, Rd. Hd. 10-24 X 3/4				
16	220 967	1	COVER, Front				
17	220 513	1	FILTER				
18	220 516	1	SCREEN				
19		1	SCREW, Pan Hd. Self Tapping 8-32 X 7/32				
20	220 517	1	Housing				
21	220 529	1	BEARING, BALL Housing				
22	220 534	1	SHAFT AND ROTOR ASS'Y				
23	220 530	1	BEARING, BALL End Cap				
24	220 533	1	LOAD SPRING				