

TinyBook™

## T706 User Manual

Using Your Tiny Book™

This User Manual will guide you through the initial setup and hardware features of your TINY BOOK.

*User Manual Sections:*

**A. Introducing the Tiny Book™**

Tiny Book™ Do's and Don'ts

**B. Getting to know your Tiny Book™**

Hardware Features and Use

**C. Getting Started**

Initial Setup

**D. Using your Tiny Book™**

Tiny Book™ Programs and Utilities

**Notes and Warnings**



**NOTE:** Extra information that may be useful.




**WARNING:** Please follow this information carefully for the safe and proper function of your Tiny Book™.

## A. Introducing the Tiny Book™ Charging Your Batteries

Before use, please charge your Tiny Book™ for 8 hours. This will help extend the lifetime of the battery.

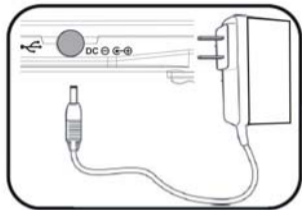
A fully charged battery pack can power your Tiny Book™ for about 3-4 hours. Running time may vary depending on use. Video playback, Wi-Fi use, and similar applications may shorten the available time.

 **NOTE:** The battery charges as long as the AC adapter is plugged in an AC power source.

 **WARNING:** DO NOT LEAVE YOUR Tiny Book™ TO CHARGE OVERNIGHT OR LEAVE IT PLUGGED INTO AN AC POWER OUTLET FOR LONG PERIODS OF TIME TO AVOID OVERHEATING OF NOTEBOOK.

### Safety Precautions

The following safety precautions will increase the lifespan of your Tiny Book™. Follow all instructions and warnings listed in this guide. Do not attempt to open or take apart your Tiny Book™. If there are any problems with your Tiny Book™, refer all servicing to qualified personnel or contact our service hotline to find information for the nearest




service center.

- Do not place the device on unstable surfaces. Always make sure that the device is operating on an even or balanced area.
- Do not use any chemical liquids on the display panel or the surface of the device.
- Do not expose to dusty or dirty environments.
- Do not press on or apply excessive force to the display panel.
- Do not operate the device on your lap or any part of your body for extended periods to prevent injury from heat dissipated by the device.
- Do not place or drop anything on the device as this may break the display panel.
- Do not put or force foreign objects into the vents or open holes on the device. Foreign objects may disrupt the power within the device and cause damage.
- Do not expose or use the device near liquids, water or excessive moisture.
- When there is an electrical storm, avoid using any electrical devices since electrical current supply could be unstable.
- Do not expose to strong magnetic or electrical fields.
- Do not expose your device to extreme heat.
- Properly shut down the device after using.
- Do not cover the device while it is powered ON. Keep materials away that would reduce the air circulation within the device.

## Transportation Precautions


When travelling with a Tiny Book™, be sure to turn OFF your device when on the move. This will prevent damage to the hard disk and to other internal hardware.


 **NOTE:** Be sure to turn OFF your device before closing the display panel. Do not close the display panel while the device is ON.

## Airport Precautions

Contact your airline or your flight attendant if you plan to use your Tiny Book™ on the airplane for any rules or restrictions for electronic device use onboard. There are three main airport security devices used:

X-ray Machines ( mostly used to check items on a conveyer belt),  
Magnetic or Metal detectors ( used on people for security checks), and  
Hand Held Magnetic Devices.

 **NOTE:** Make sure to turnoff your Wi-Fi when on the plane as this may disrupt the airline communication.

 **WARNING:** Do not expose your device to magnetic devices as this may damage your laptop.

## B. Getting to know your Tiny Book™

### Get to know your Tiny Book™

#### 1-5 Status Indicators

- (1) Power ON LED (Blue)
- (2) Power DC & Charger LED (Red & Green)
- (3) Wireless LAN Activity (Blue)
- (4) Number Lock (Blue)
- (5) Caps Lock (Blue)

#### 6-8 Touchpad and Buttons

The touchpad surface (7) senses finger touch movement to move the cursor on the screen. The buttons (6 & 8) allow for click and right-click.

#### 9 Keyboard



**Note:** Keyboard may differ by location.

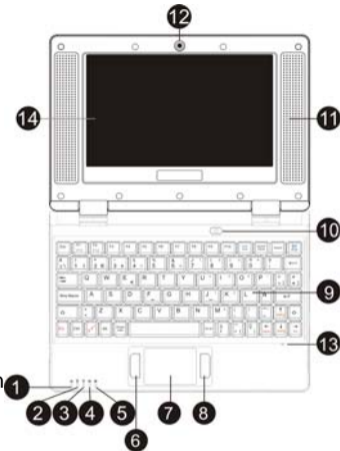
#### 10 Power Button

Press the switch once to turn on and hold it to turn OFF the Tiny Book™.

#### 11 Built-in Speakers

#### 12 Camera (on selected models)

The built-in camera takes pictures or records video.




### **13 Built-in Microphone**

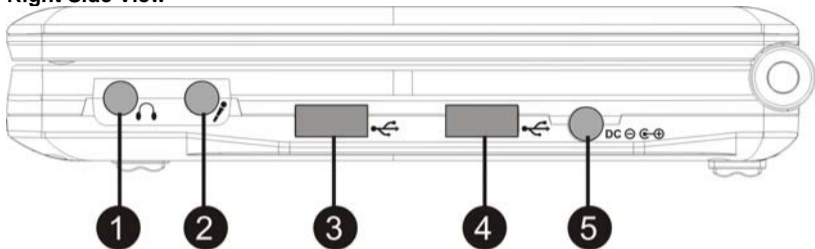
The built-in microphone allow users to talk to other people via VOIP (Voice-Over-Internet-Protocol) using MSN, or record their voice.

### **14 Display Panel**

The Tiny Book™ uses a TFT LCD to produce a clear and sharp picture.

 **NOTE:** Use a soft cloth with water to clean the display panel. Do not use any liquid chemical to clean the display panel.

## Right Side View



### **1 Headphone Output Jack**

3.5mm stereo headphone jack is used to connect the audio out signal to amplified speakers or headphones. Using this jack automatically disables the built-in speakers.

### **2 Microphone Input Jack (Mic In)**

3.5mm mono microphone jack is used to connect an external microphone or other audio devices. Using this jack automatically disables the built-in microphone. Use this feature for video conferencing, voice narrations, or simple audio recordings.

### **3-4 USB Port (2.0 Full Speed)**


The Universal Serial Bus is compatible with USB 2.0 or USB 1.1 devices.

### **5 Power (DC) Input**

The supplied power adapter converts the AC power supplied to DC power for the Tiny

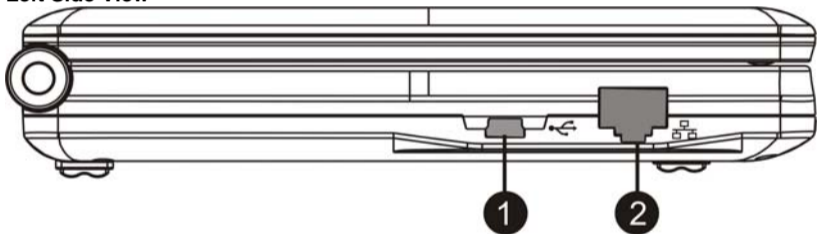


Book™ to use. Power supplied through the use of this jack powers the Tiny Book™ and charges the internal battery pack.

 **NOTE:** Do not use other power adapters, please use the supplied power adapter to prevent damage to the Tiny Book™.

 **WARNING:** THE ADAPTER MAY BECOME VERY HOT, DO NOT COVER THE ADAPTER WHEN IN USE AND DO NOT TOUCH WITH BARE SKIN.

### Left Side View



#### 1 Mini USB Sync Connector

The mini USB port can be used to sync your device with your desktop or laptop computers. Data transfer and application installation on your Tiny Book™ are made easy.

#### 2 LAN Port

The LAN port (10/100M Bit) supports standard Ethernet connection to a local network.

See Chapter 3-1 for connection settings and configurations instructions.

## Bottom View

### 1 Ventilation Openings


These openings allow for cooling excess heat from the unit.

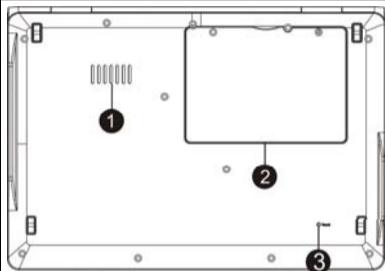
### 2 Main Battery Compartment

The Tiny Book™ uses a lithium battery.

### 3 Reset Button

Press the reset button to restart the computer if it is not responding.

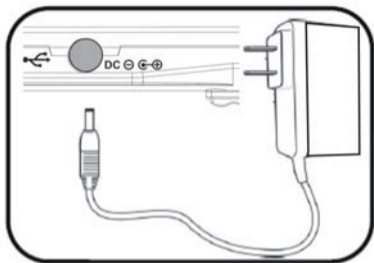
 **NOTE:** This button does not restore the original factory settings.




## Battery and Power System

### Charging and using AC Power

The Tiny Book™ comes with an universal AC-DC adapter for use with either 110V-240V outlets. There are no switches to adjust and no need to purchase a power converter when traveling to different countries. You may need to purchase a plug converter separately to convert the adapter plug when traveling.





 **NOTE:** 1. The Tiny Book™ adapter may have a two or three-prong plug depending on the country it was purchased in.  
2. Damage may be caused if a different adapter is used to power the Tiny Book™. Always use the adapter that came with the device.

 **WARNING:** THE ADAPTER MAY BECOME VERY HOT DURING USE, DO NOT COVER THE ADAPTER WHEN IN USE AND DO NOT TOUCH DIRECTLY.

## Using the Battery Power

The battery pack that comes with the Tiny Book™ is secured in the battery compartment. A fully charged battery will provide 3-4 hours of battery life on your Tiny Book™.

 **NOTE:** Remember to fully charge the battery before first use and whenever it is completely drained. This will help extend the battery life of the Tiny Book™.


 **WARNING:** Do not use any other adapter except those provided by your Tiny Book™ retailers. Universal power adapters may have a different voltage and current output that may permanently damage your Tiny Book™ when used.


## Emergency Shutdown and Reset

In the event that the operating system cannot work properly or is not responding, please follow these directions to shut down or reset your Tiny Book™:

**SHUTDOWN** - Hold the Power button down until the system shuts down

**RESET** - Press the reset button and the system will reboot (restart).

 **NOTE:** Save your work regularly to avoid data loss in case your system fails to respond.

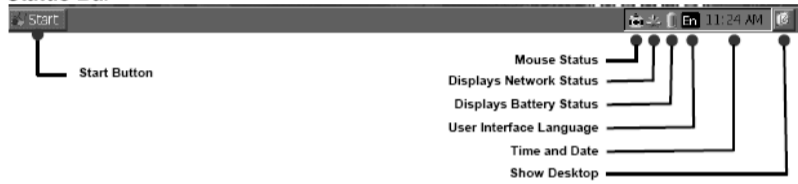
 **WARNING:** WHEN YOU PERFORM AN EMERGENCY SHUTDOWN OR RESET, ALL UNSAVED DATA WILL BE LOST.

## User Interface

The Tiny Book™ is designed for ease of use and convenience. All the applications

you need are at your fingertips. The simple interface makes it easy to navigate through your system files and documents.

## Status Bar



*My Computer* displays all the drives and locations.



*My Documents* is a shortcut to all your personal files.





View and Edit simple text documents.

WordPad



**Windows™ CE Messenger V.5** - Chat with your Windows Live account contacts.

Messenger



**Internet Explorer 6** - Access web pages using this browser.

Internet Explorer



**Media Player 9** - You can play your Music and Video using the *Media Player 9*. Plays music (MP3 and WMA) and videos (MP4 and AVI).

Media Player



**TCPMP** - You can also play other formats of music and videos using this media player. Support AVI,MP4,ASF,WMV,FLV video file.



**Q3UMail** – Mail Client can support POP3 and SMTP.



**PDF Viewer** - View common PDF documents.



**Powerpoint** - View Microsoft PowerPoint presentations.



**Word** - View and edit your Microsoft Word Documents.



**Excel** - View and edit Microsoft Excel Documents.


## C. Getting Started

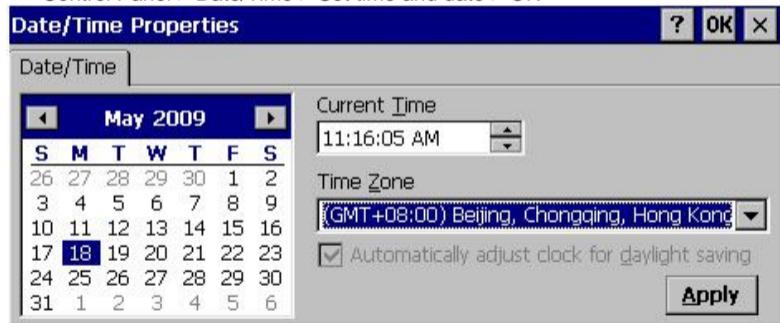


## First Run Wizard

### Setting the Date and Time

On the bottom of the desktop screen, double click on the time to open the date and time properties.

 **NOTE:** You can also set the time in the control panel Go to START > Settings > Control Panel > Date/Time > Set time and date > OK



**Date/Time Properties** ? OK X

Date/Time

May 2009

S	M	T	W	T	F	S
26	27	28	29	30	1	2
3	4	5	6	7	8	9
10	11	12	13	14	15	16
17	18	19	20	21	22	23
24	25	26	27	28	29	30
31	1	2	3	4	5	6

Current Time  
11:16:05 AM

Time Zone  
(GMT+08:00) Beijing, Chongqing, Hong Kong

Automatically adjust clock for daylight saving

Apply

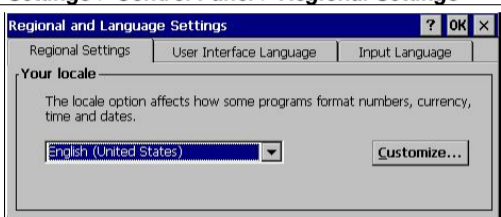
## Setting Region and Language

The Tiny Book™ has settings for regional formats, interface language, and input language. These are accessible within the Regional and Language Settings dialog. To open the dialog, go to: **START > Settings > Control Panel > Regional Settings**

### Regional Settings Tab

Set your regional date, currency and other settings.

1. Select Your Country
2. Press OK



## User Interface Language Tab

Changes the language for the menus, dialogs and alerts. The language available may vary depending on the country of purchase.

1. Select Your Language
2. Press OK

## Input Language Tab

1. Select Your Input Language
2. Press OK



## D. Using your Tiny Book™ Security

Tiny Book™ features system password security. If set, the user will be prompted for a password at start-up or to turn off the screen saver.

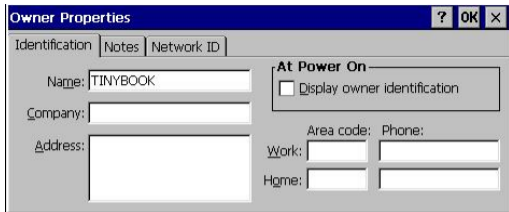
1. Select the Start Menu
2. Settings Menu Option
3. Open the Control Panel
4. Select the Password Icon
5. Enter Your Password
6. Press OK When Done



## Owner Properties

You can enter your contact information which can be displayed in the beginning of the system start up. This may help to recover your Tiny Book™ in the event it is lost.

1. Select the Start Menu
2. Settings Menu Option
3. Open the Control Panel
4. Select the Owner Icon
5. Enter Your Information
6. Press OK When Done



**Owner Properties** ? OK X

Identification | Notes | Network ID

Name: TINYBOOK

Company:

Address:

**At Power On**

Display owner identification

Area code: Phone:

Work:

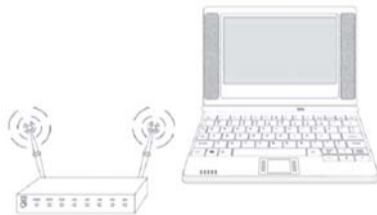
Home:

## Internet

### Wi-Fi Connections

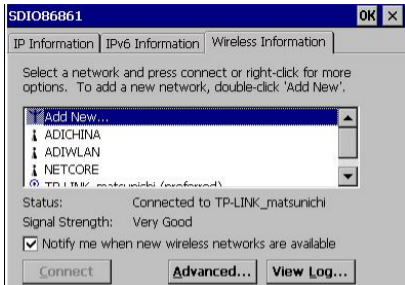
The Tiny Book™ comes with a built-in Wi-Fi for wireless connections. You can access the internet provided that a Wi-Fi base station is accessible in the area.

When connected via wireless internet, you will be able to access your emails, browse the internet and chat with friends using MSN .



## Setting Up a Wireless Network Connection

1. Select the Network Icon from the Status Bar at the bottom of the screen.
2. To add a new wireless network, select the Add New from the Wireless Information tab Network List.



3.Fill in the Network Name (SSID) of the connection. This needs to match the name of the access point.

4.When configuring your wireless network key, you will need the Encryption type (AES or TKIP) and Authentication type (Open, Shared, WPA, WPA2, WPA-PSK or WPA2-PSK). You may also need the Network Key (like a password), and a Key Index.

5.EAP has two types which are the TLS and PEAP. If there is any question of which type, just try the default to start.

**Wireless Network Properties**

Network name (SSID):

This is a computer-to-computer (ad hoc) network; wireless access points are not used

**Wireless network key (WEP)**

This network requires a key for:

Encryption:

Authentication:

Network key:

Key index:

The key is provided automatically

**IEEE 802.1X Authentication**

Enable 802.1X authentication on this network

EAP type:

## Connecting to a Network

The Wi-Fi will automatically scan the area for available networks. You can configure your wireless settings to automatically connect to known networks. When your internet connection is in range, a connection will automatically be made. A secure connection will require a user name and password to access the service.

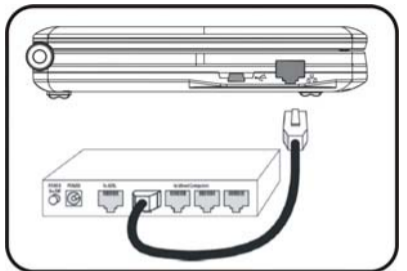


## Setting Up a Wired Network Connection



## Configuration

1. Connect your Tiny BookTM to the network by plugging in a standard Ethernet (RJ-45) cable into the Network port on the left side of the case. Be sure the cable is also connected to your network on the other end in order to complete the connection.



## Setting Up a Network Connection

Open the Network Connections Window :

1. Open the Start Menu
2. Select the Settings Menu Option
3. Select Network and Dial-up Connections
4. Select "DM9ISA1"Icon



## Surfing the Internet

After you have finished the network setup, launch the Internet Explorer located on the desktop and you can start surfing the net.

## Advanced Settings for Internet Explorer

1. Open Internet Explorer
2. View
3. Internet Options

*See the following pages for details of how to change your Start Page, Search Page, and User Agent.*



## Changing your Homepage

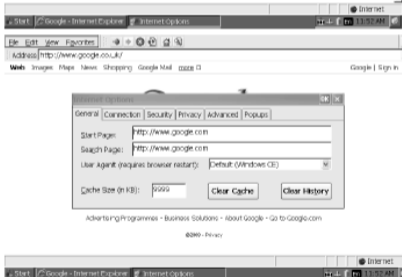
1. Internet Options
2. General tab
3. Change the Start Page by entering a valid URL (see example).
4. Press OK when finished.



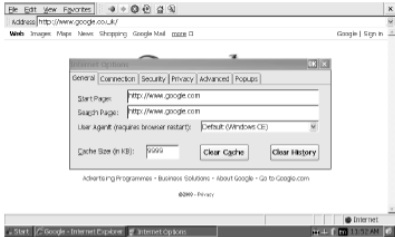
## Changing Your Browsing Experience

Your version of IE features three different browsing modes: **Windows CE (default)**, **Pocket PC**, **Same as Windows XP**.

Using the “Windows CE (Default)” and “Pocket PC” option will provide you with a faster connection and shorter loading times, but the pages may not be the same as you see on your desktop computer. Using “Same as Windows XP” option will load more slowly but the site will appear similar to a desktop browser.



1. Internet Options
2. General tab
3. Select the User Agent from the drop down selection.
4. Press OK when finished.
5. Restart Internet Explorer to complete.



## Email

Can send and receive POP3,SMTP mail.

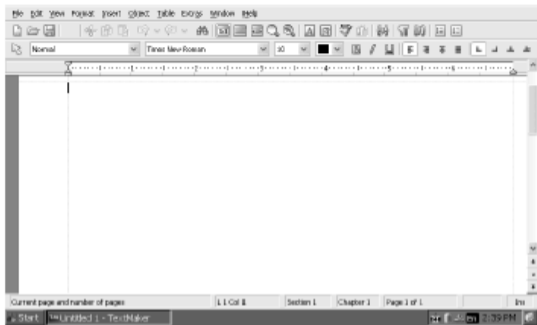
## MSN Messenger

Stay connected with your family and friends using the MSN Messenger V.5.

## Office Applications

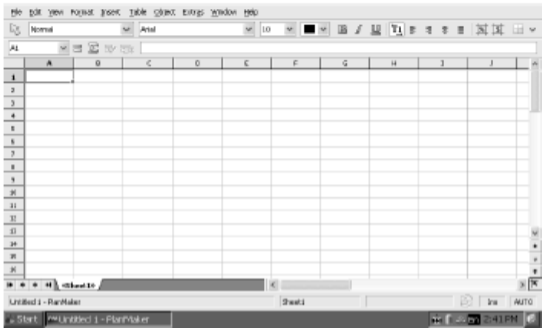
## Word

The Document Writer application allows you to read and write on any Microsoft Word Document 2003 and below. All the common functions are provided in the Document Writer. All documents edited or created in the Document Writer can be viewed on any **computer running Microsoft Office 2003 and below.**



## Excel

Read and write any Microsoft Excel 2003 Document and below. All the common functions are available for your spreadsheet. All documents edited or created can be viewed on any computer running Microsoft Office 2003 and below. See [www.softmaker.com](http://www.softmaker.com) for program details and support.



## PDF Viewer

The TINY BOOK comes with a PowerPoint Presentation Viewer and a PDF Viewer.

## Media Applications

### Media Player 9

Plays music (MP3 and WMA) and videos (MP4 and AVI).

### TCPMP (CORE Media Player)

When streaming online videos, (e.g. [www.ytpocket.com](http://www.ytpocket.com)), the Tiny Book™ will automatically use this player. The TCPMP can also play music and videos files which are not compatible with media player 9.

## **FCC WARNING**

This device complies with Part 15 of the FCC Rules. Operation is subject to the following two conditions:

(1) this device may not cause harmful interference, and (2) this device must accept any interference received, including interference that may cause undesired operation.

This device must be installed to provide a separation distance of at least 2.5 cm from all persons and must not be collocated or operating in conjunction with any other antenna or transmitter.

NOTE 1: This equipment has been tested and found to comply with the limits for a Class B digital device, pursuant to part 15 of the FCC Rules. These limits are designed to provide reasonable protection against harmful interference in a

residential installation. This equipment generates, uses and can radiate radio frequency energy and, if not installed and used in accordance with the instructions, may cause harmful interference to radio communications. However, there is no guarantee that interference will not occur in a particular installation. If this equipment does cause harmful interference to radio or television reception, which can be determined by turning the equipment off and on, the user is encouraged to try to correct the interference by one or more of the following measures:

- Reorient or relocate the receiving antenna.
- Increase the separation between the equipment and receiver.
- Connect the equipment into an outlet on a circuit different from that to which the receiver is connected.
- Consult the dealer or an experienced radio/TV technician for help.

NOTE 2: The manufacturer is not responsible for and radio or TV interference caused by unauthorized modifications to this equipment. Such modifications could void the user's authority to operate the equipment.